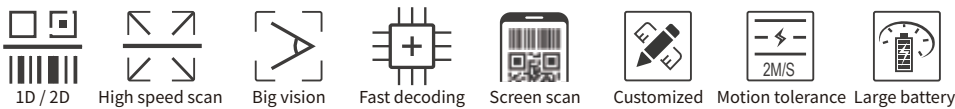
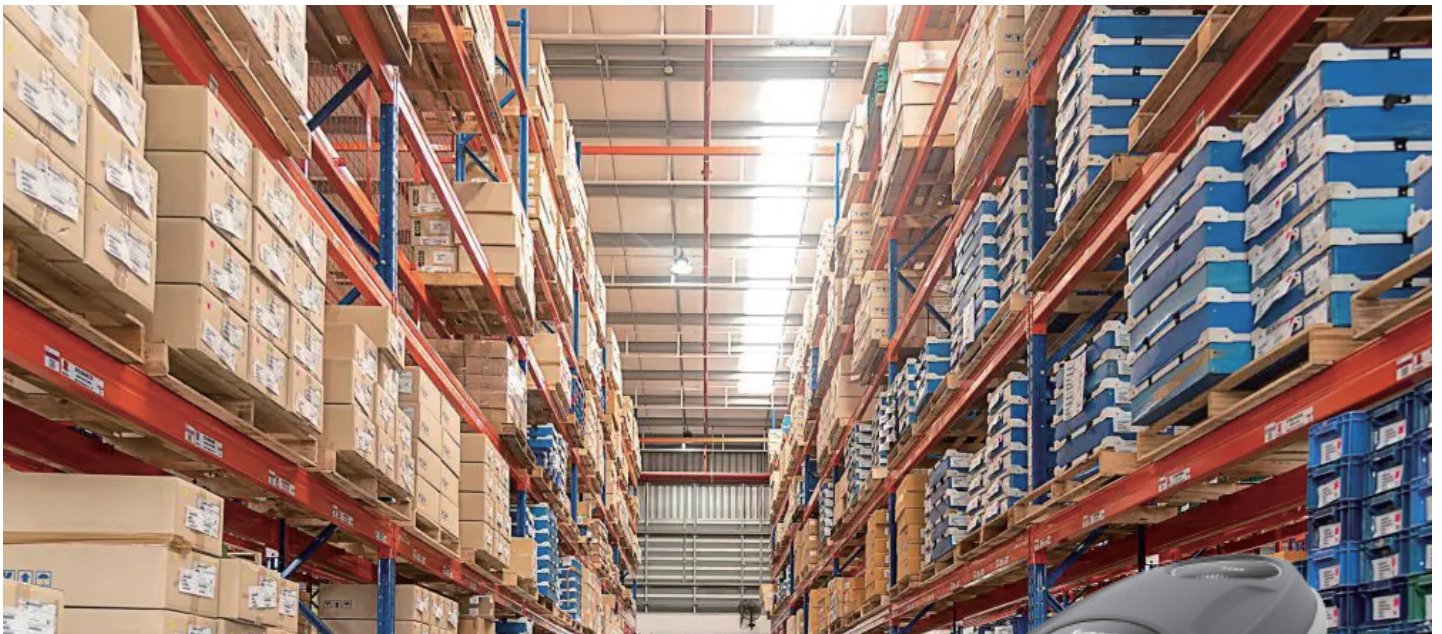


2D Wireless Barcode Scanner

5280



GENERAL FEATURES

- Megapixels global shutter camera, fast reading speed 60fps/s
- Bluetooth 5.0 with transfer distance 200M
- 2600mAh removable battery with three charging options. TYPE-C, cradle, battery socket
- Easy in reading 1D&2D code (including colored, stained and fuzzy code)
- Plug and play, no driver installation. Support USB and RS232 interface
- Distinctive cradle one-touch scanner search function to find the scanner immediately
- Unique scanning barcode with vibration, bring comfortable scanning experience
- Compatible with Windows 7/8/10, iOS, Android, Linux system
- Widely be used in warehouse, logistics, and retail stores



• cradle

• single charger

• 4 slots charger

• dongle

ACCESSORIES



5280

Specifications

Physical Characteristics

Dimensions:	180mmx95mmx70mm
Weight:	212g
Voltage/Current:	5VDC+/-10%@500mA

Performance Characteristics

Image(Pixels):	1280 pixels(H) x 1080 pixels(V)
Light Source:	illumination:4000KLED+617nmLED
Field Of View:	38.5°(H)x32.5°(V)
Roll/Pitch/Yaw:	Pitch ±65° Yaw 360° Roll ±60°
Battery Volume:	4.2v/2600mAh
Charging time:	5-6h
Working time:	Continuously working 16H,1 scan per second(full capacity)
Wireless technology:	Bluetooth 5.0
Operation distance:	200 meters (open space)
Print Contrast:	15% minimum reflective difference
Interfaces Supported:	USB,RS232
Motion Tolerances:	2m/s
Decode Capability:	1D: UPC,EAN,Code 128,Code 39,Code 93,Code 11,Matrix 2 of 5,Codabar, Interleaved 2 of 5,etc
	2D: PDF417,MicroPDF417,Data Matrix,Maxicode,QR Code,MicroQR,etc.

User Environment

Operating Temperature:	0°C to 50°C
Storage Temperature:	-40°C to 70°C
Humidity:	0% to 95% relative humidity,non-condensing
Shock Specifications:	Designed to withstand 1.5m(5) drops
Ambient Light Immunity:	100,000 Lux.

Decode Ranges

Code 39 (3.13 mil):	35mm-80mm	Code 39 (5.13 mil):	35mm-165mm
PDF(6.88 mil):	20mm-210mm	DM (10 mil):	50mm-230mm
UPC-A (13.3 mil):	25mm-390mm	QR (20 mil):	20mm-410mm



Suzhou SuperMax Smart System Co.,Ltd.

TEL:86-135 7070 7698

E-MAIL:daisy.liu@superlead.com

WEB: www.isuperlead.com

ADD: Building 57,No.2 Dongfu Road,Suzhou
Industrial Park,Jiangsu,China.

