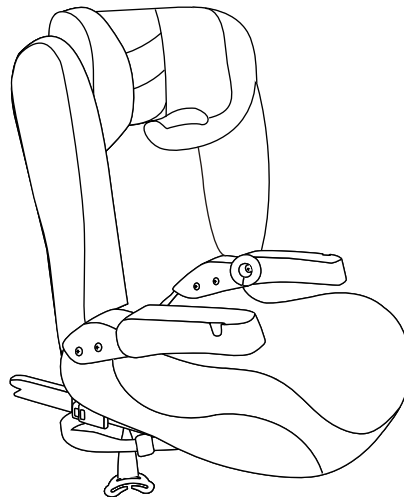


## More Than Safe.

YANGZHOU LETTAS BABY PRODUCT CO.,LTD

WEB:  
[reebaby.en.alibaba.com](http://reebaby.en.alibaba.com)

ADD:  
JIANHUA VILLAGE, HANJIANG DISTRICT,  
YANGZHOU CITY, JIANGSU PROVINCE, 225127, P.R. CHINA



## reebaby Child Safety Car Seat

Child Safety Car Seat  
PRODUCT TYPE: A23+  
15~36KG(3Y~12Y)



**IMPORTANT: READ THESE  
INSTRUCTIONS CAREFULLY BEFORE  
USE AND KEEP FOR FUTURE  
REFERENCE.**

If these instructions are not followed, the safety  
of a child may be severely endangered.

## CATALOGUE

1. Notice.....	2
2. Structure Name.....	3
3. Warning.....	3
4. Safety Seat Use Method.....	5
4.1 Install location.....	5
4.2 Removing the fabric cover.....	6
4.3 Adjust the headrest.....	6
4.4 Install the Backrest and the Base.....	7
4.5 Re-separate the backrest and the base.....	7
4.6 Adjust the armrest.....	7
5. Installation.....	9
5.1 A23+ Mandy Plus Group II III (15-36kg) Installed in the forward facing position with ISOFIX CONNECTOR and vehicle belt.....	8
5.2 A23 Mandy Group III (22-36kg) Installed in the forward facing position with ISOFIX CONNECTOR and vehicle seat belt....	10
6. Care and Maintenance.....	12
7. Main Technical Parameter.....	13

## 1.NOTICE

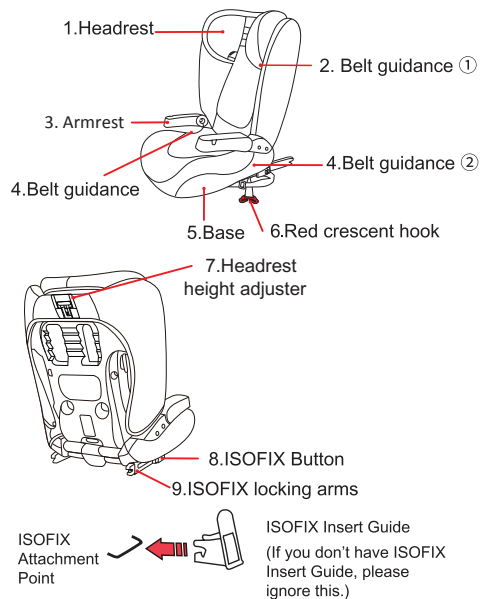
CHIDL SAFETY SEAT WITH ISOFIX CONNECTOR  
GROUP II III )

This child restraint is classified for “(Semi-universal)”  
use and is suitable for fixing into the seat positions  
of the following cars:

CAR	FRONT	REAR
	Outer	Centre
(Model)	-Yes-	-Yes- No

Seat positions in other cars may also be suitable to  
accept this child restraint. Please refer to the  
information documents or the retailer's website for the  
suitable car model list. If in doubt, consult either the  
child restraint manufacturer or the retailer any time.  
Only suitable if the approved vehicles are fitted with  
3 point with retractor safety-belts and ISOFIX  
anchorage, approved to UN/ECE Regulation No. 16 or  
other equivalent standards.

## 2.STRUCTURE NAME



## 3.WARNING

**IMPORTANT!** Please carefully read and make sure you understand all instructions in this manual and in the vehicle owner's manual related to child safety seats. Install and use the child safety seat as described in the instruction manual. Failure to do this could result in serious injury or death of your child. Keep the instructions together with the child restraint for future reference.

**IMPORTANT!** Because of potential medical issues inherent to low birth weight and premature infants, always have a trained professional doctor or hospital staff member assess the suitability of the child restraint prior to leaving the hospital or using the child restraint.

**DO NOT** use a child safety seat with damaged or missing parts.

**DO NOT** use damaged or frayed harness straps or vehicle belt.

**NEVER** use this child restraint with any other base except ones that the manufacturer permits.

**DO NOT** use a child safety seat that has been in a crash. A crash can cause damage to the child safety seat that you cannot see.

**DO NOT** use a second-hand child seat or child seat whose history you do not know.

**DO NOT** leave your child in this restraint for an extended period of time.

**DO NOT** use on vehicle seats that face the sides or rear of the vehicle. Use the child safety seat only on forward-facing vehicle seats.

The rigid items and plastic parts of a child restraint must be so located and installed that they are not liable, during everyday use of the vehicle, to become trapped by a movable seat or in a door of the vehicle.

Ensuring that any lap strap is worn low down, so that the pelvis is firmly engaged, shall be stressed.

It is dangerous that making any alterations or additions to the device without the approval of

the competent authority, and not following closely the installation instructions provided by the child restraint manufacturer.

The chair should be kept away from sunlight, otherwise it may be too hot for the child's skin.

Children are not left in their child restraint system unattended.

Any luggage or other objects liable to cause injuries in the event of a collision shall be properly secured.

The child restraint must not be used without the cover. The seat cover should not be replaced with

any other than the one recommended by the manufacturer, because the cover constitutes an integral part of the restraint performance.

Any straps holding the restraint to the vehicle should be tight, that any straps restraining the child should be adjusted to the child's body, and that straps should not be twisted.

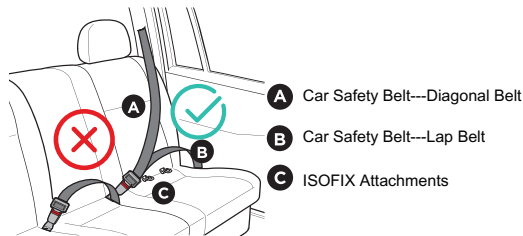
If position of the adult safety-belt buckle relative to the main load bearing contact points on the child safety seat is unsatisfactory. Please contact the manufacturer if in doubt about this point.

Not to use any load bearing contact points other than those described in the instructions and marked in the child restraint.

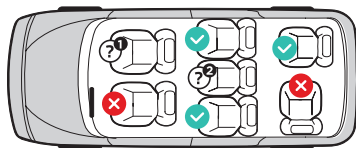
Please read the car manufacturer's handbook before installing this ISOFIX child safety seat.

## 4. SAFETY SEAT USE METHOD

### 4.1 Install Location



When using as Semi-universal category (Group II III), this child restraint system is suitable for seat belt models equipped with the three-point retractor that has passed the ECE R16 requirement and is not suitable for models only equipped with 2-point seat belts. And only after installed ISOFIX then can use on it



✓ Correct/Proper

✗ Wrong/Improper

- ?<sup>1</sup>** When the front seat with opened airbag, cannot install in this place.  
**?<sup>2</sup>** Only with 3-point seat belt and ISOFIX attachments can install in this place.

Group	Installation method	Child installation	User Guide chapter
II III(15-36kg)	3-point belt + ISOFIX CONNECTOR	(3-point belt) Vehicle belt	5.1
III(22-36kg) Booster cushion	3-point belt + ISOFIX CONNECTOR	(3-point belt) Vehicle belt	5.2

### 4.2. Removing the fabric cover

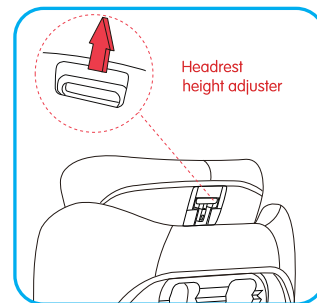
#### A) Headrest

1. Move the headrest of the child seat to the upper position.
2. Take off the cover from belt holder of headrest first, then remove the cover of the headrest.

#### B) Take off the cover from backrest and base.

### 4.3 Adjust the headrest

Pull the headrest height adjuster and headrest at same time, select the correct height of the headrest and engage it in the position that fits for your child by releasing the adjuster.

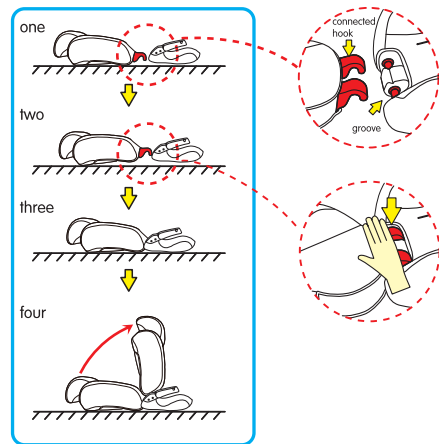


Adjust the headrest to the proper position so that the distance between the shoulder of the child and the bottom of the headrest can be lowered by one finger.



#### 4.4 Install the Backrest and the Base

1. Lay flat the backrest and the base.
2. Insert the hook of the backrest to the groove of the base.
3. Need to press strongly, make sure the both hook fully engaged.
4. Turn the backrest into a vertical position.

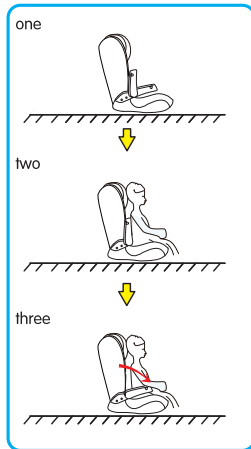


#### 4.5 Re-separate the backrest and the base

Simply follow the steps in the opposite order of 4.4

#### 4.6 Adjust the armrest

1. Raise the armrest at 90 degree angle
2. Place the baby in the seat
3. Put the armrest flat



#### 5. INSTALLATION

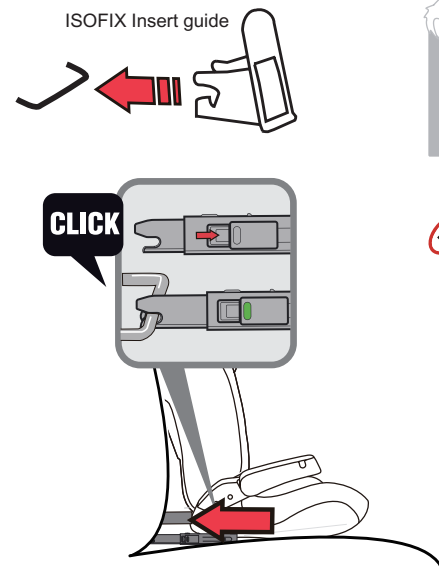
##### 5.1 A23+ Mandy Plus Group II III (15–36kg) Installed in the forward facing position with ISOFIX CONNECTOR and vehicle belt

Step 1: Put the ISOFIX insert guide into the two ISOFIX attachment points of your vehicle.

If you do not have ISOFIX Insert guide, please ignore this step.

**NOTE:** The ISOFIX attachment points are located between the surface and the backrest of the vehicle seat.

Press the ISOFIX CONNECTOR adjuster to pull out from base, pull the locking arm to and fro until you hear an audible **CLICK** which indicates they are fully engaged. And on both sides of the locking arms, the button turn into green safety color.



Step 3: Pull out the belt from the belt ALR. Diagonal belt through the same side of Belt guidance ①. Lap belt through the same side of Belt guidance ②, then pull the diagonal belt and lap belt together through another side of Belt guidance ②.

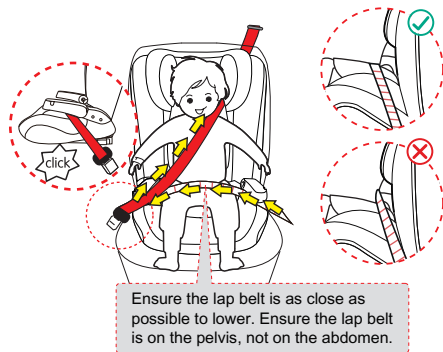
Lock the tip of the buckle into the vehicle seat buckle with a CLICK noise.

NOTE 1: Keep the diagonal belt at the position of shoulder between the outside of the neck and shoulder (Middle of point (A) and point (B)). (see page 11 picture a)

NOTE 2: The diagonal seat belt section must run diagonally backward. You can adjust the course of the belt with your vehicle's adjustable belt deflector on both sides.



picture a



Ensure the lap belt is as close as possible to lower. Ensure the lap belt is on the pelvis, not on the abdomen.

## 5.2 A23 Mandy Group III (22–36kg) Installed in the forward facing position with ISOFIX CONNECTOR and vehicle seat belt

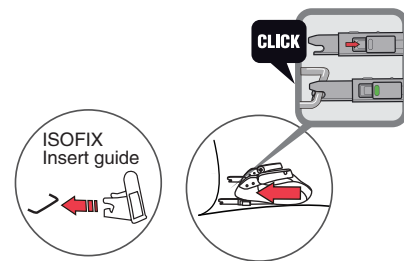
If you don't want to use the backrest, it can be separated (See 4.4 and 4.5) to only use the base booster.

Use the child safety seat only on forward facing vehicle seats. According to accident statistics, children are safer when properly restrained in rear seats than in front seats.

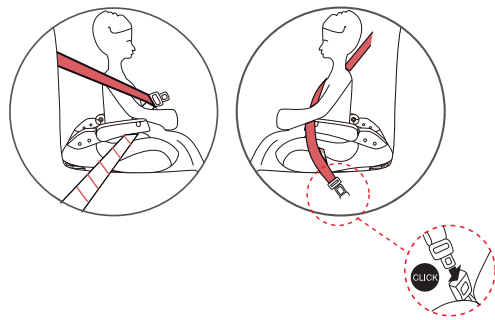
Step1: Put the ISOFIX insert guide into the two ISOFIX attachments of your vehicle.  
If you do not have ISOFIX Insert guide, please ignore this step.

Step2: Press the ISOFIX button to pull out both ISOFIX locking arms. Grasp the child seat with both hands and slide the two locking arms firmly into the insert guides until the locking arms engage with a clicking noise on both sides. The green safety button must now be visible on both sides.

Try your best to push the booster, and it will be tighter.

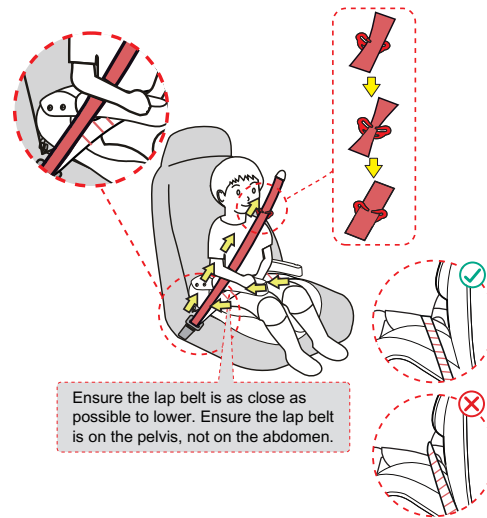


Step 3: Pull out the belt from the belt ALR. Lap belt through the same side of Belt guidance ②, then pull the diagonal belt and lap belt together through another side of Belt guidance ②. (NOTE: Diagonal belt is above the armrest, lap belt is under the armrest) Finally lock the tip of the buckle into the vehicle seat buckle with a CLICK noise.



Step 4: Guide the diagonal belt into red crescent hook, make sure the diagonal belt runs over your child's shoulder bone, and not in front of his or her neck.

NOTE 1: Keep the diagonal belt at the position of shoulder between the outside of the neck and shoulder (Middle of point A and point B). (see picture a)



NOTE 2: The diagonal seat belt section must run diagonally backward. You can adjust the course of the belt with your vehicle's adjustable belt deflector on both sides.

## 6.CARE AND MAINTENANCE

Periodically inspect your child seat for worn or damaged parts. If damaged parts are found, replace the child seat. Keep the child seat clean. Do no lubricate any parts of the child seat. To prolong the life of your nursery product, keep it clean and do not leave it in direct sunlight for extended periods of time.

Removable fabric covers and trims may be cleaned using warm water with a household soap or a mild detergent. Allow it to dry fully, preferably away from direct sunlight.

### CLEANING THE HARNESS AND SHELL

Sponge clean using warm water and mild soap; do not use any other cleaning agents.

### STORAGE

Store in a safe, dry place and away from heat and direct sunlight. Avoid placing heavy objects on top of the seat.



MAXIMUM WASH  
TEMPERATURE 30°C



DO NOT BLEACH



DO NOT DRYCLEAN



DO NOT DRYING



DO NOT IRON



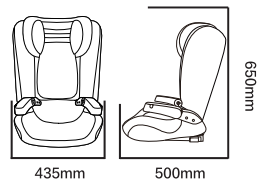
DRY FLAT IN SHADE PLACE

## 7. MAIN TECHNICAL PARAMETERS

Length: 500mm

Width: 435mm

Height: 650mm



15kg-36kg

