



ISO 9001:2015 Cert. No.: 706981



NAM THUAN PHAT  
ENGINEERING  
**ISO 9001:2015**

# NAM THUAN PHAT

## *ENGINEERING*

*YOUR **TRUSTED** CONTRACTOR*

# CONTENT

Who We Are  
Mission - Vision  
NTP Organization  
NTP Members

Design Service  
Manufacturing  
Integrated Solution

Conveyor Systems  
Steel Work

Customer Care  
Hotline Support  
Customer Insight  
Spare Parts

- 1 Introduction
- 2 What we do
- 3 Our products
- 4 Customer service

## WHO WE ARE

Since its established in 2003, NAM THUAN PHAT Engineering JSC is always proud of providing our customers with professional and perfect services in consultancy, design, supply, installation, operation and maintenance.

Continuing to improve and innovate, NAM THUAN PHAT Engineering JSC has developed steadily and brought our customers great satisfaction and complete trust in all other areas of business.

With the aim of becoming the leading electricity and mechanics contractor known for perfect service and quality in Vietnam, since the beginning of foundation, NAM THUAN PHAT Engineering JSC has always thought about our customers' benefits and has always been aware that staff plays an important role in success of the company.

### The guidelines of operation:

Prestige – Quality

Effect – Profit

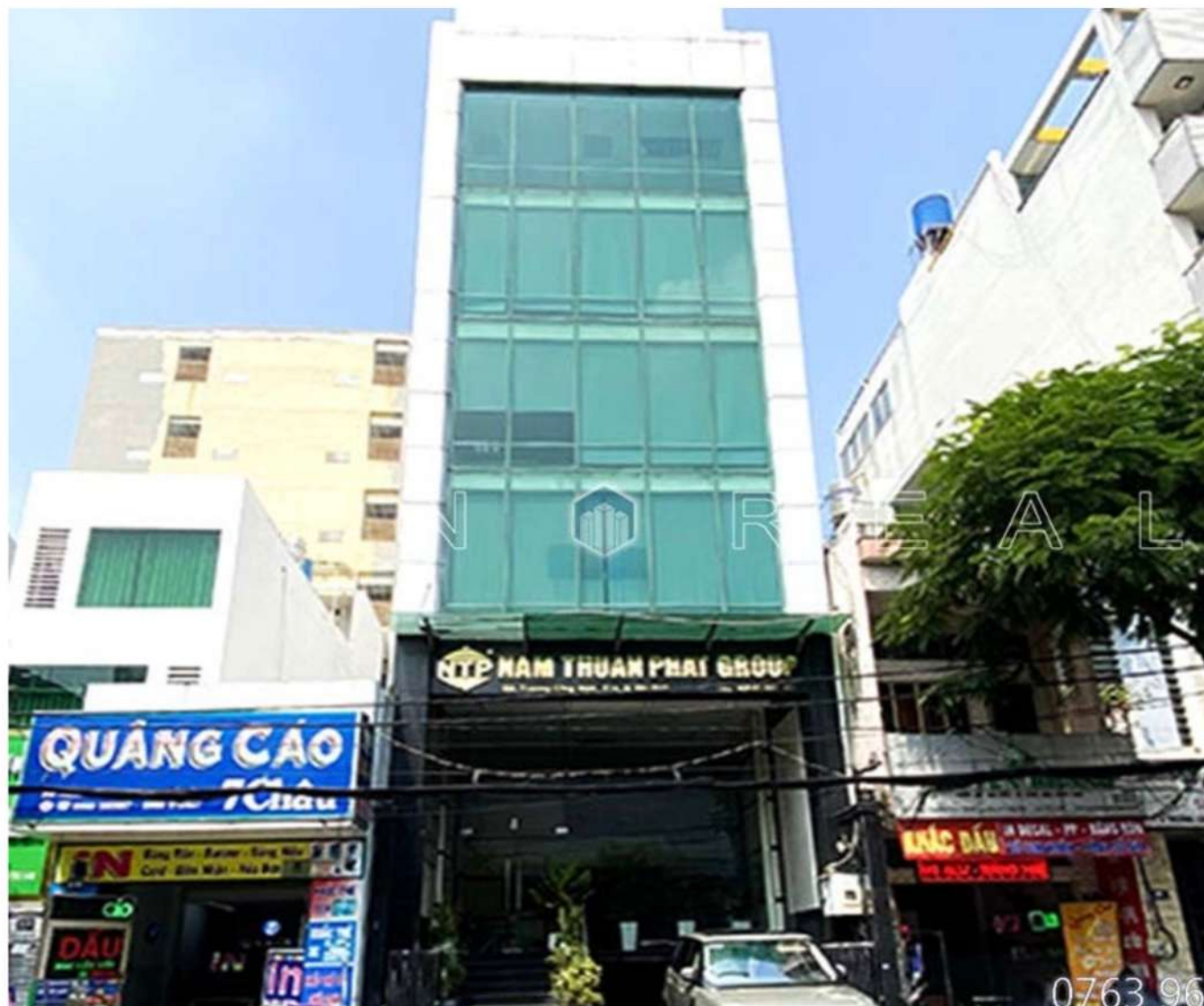
Stability – Development



# INTRODUCTION

## OFFICE

- Address : 10A Truong Cong Dinh street, Ward 14, Tan Binh District, HCM City
- Enterprise size: 30 employees.
- Built : 2003





# INTRODUCTION

## FACTORY

- Factory : Lot G, Hoang Gia Industrial Park, My Hanh Nam Commune, Duc Hoa District, Long An Province.
- Land area : 4,200 Sqm.
- Built : 2012.
- Enterprise size: 30 workers





# OUR PRODUCTS



Conveyor System for Logistics



Airport Conveyor



Pallet-handling Conveyors System



Garment Conveyor System



Conveyor System for Coal Mining



Conveyor System for Electronic Industry



Portable Conveyor



Conveyor System for Food Industry





# OUR PRODUCTS



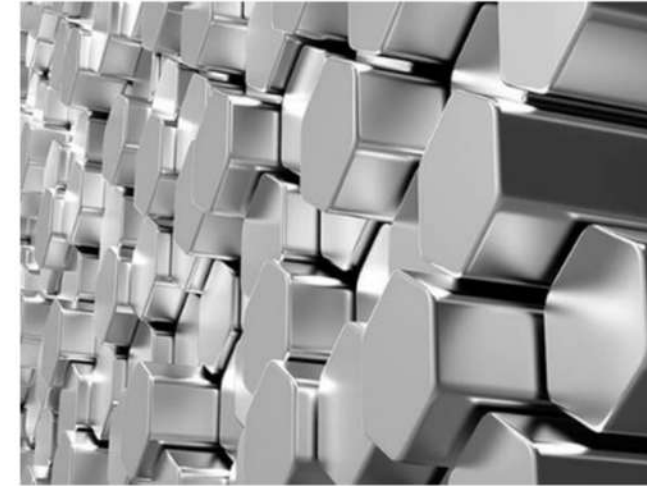
## Steel Structure



## Tank & Vessel



## Stainless steel Utility Items



## Facade



## Canopy



## Fence



## Handrail



## Sound Barrier

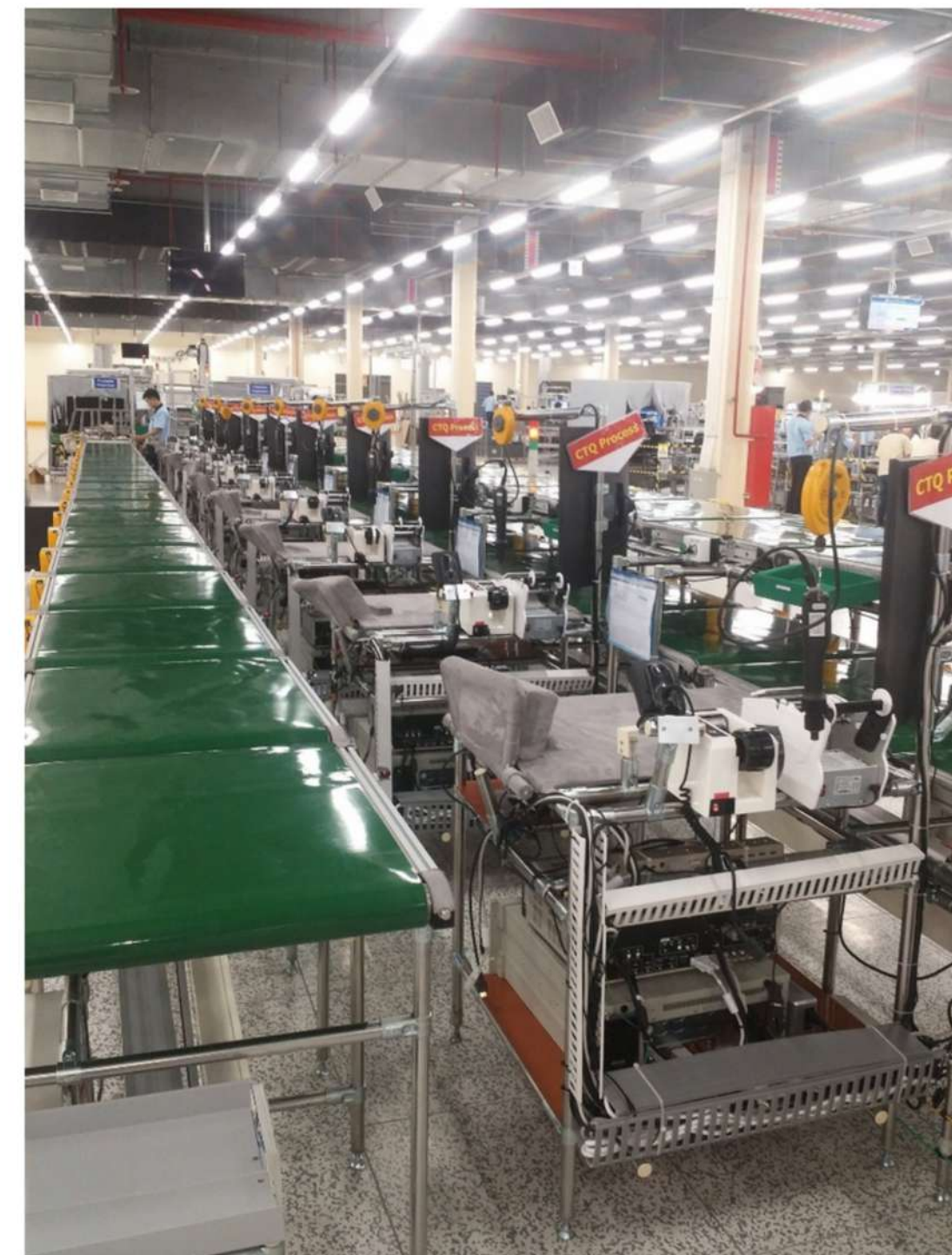




# OUR projects



## SAMSUNG Factory

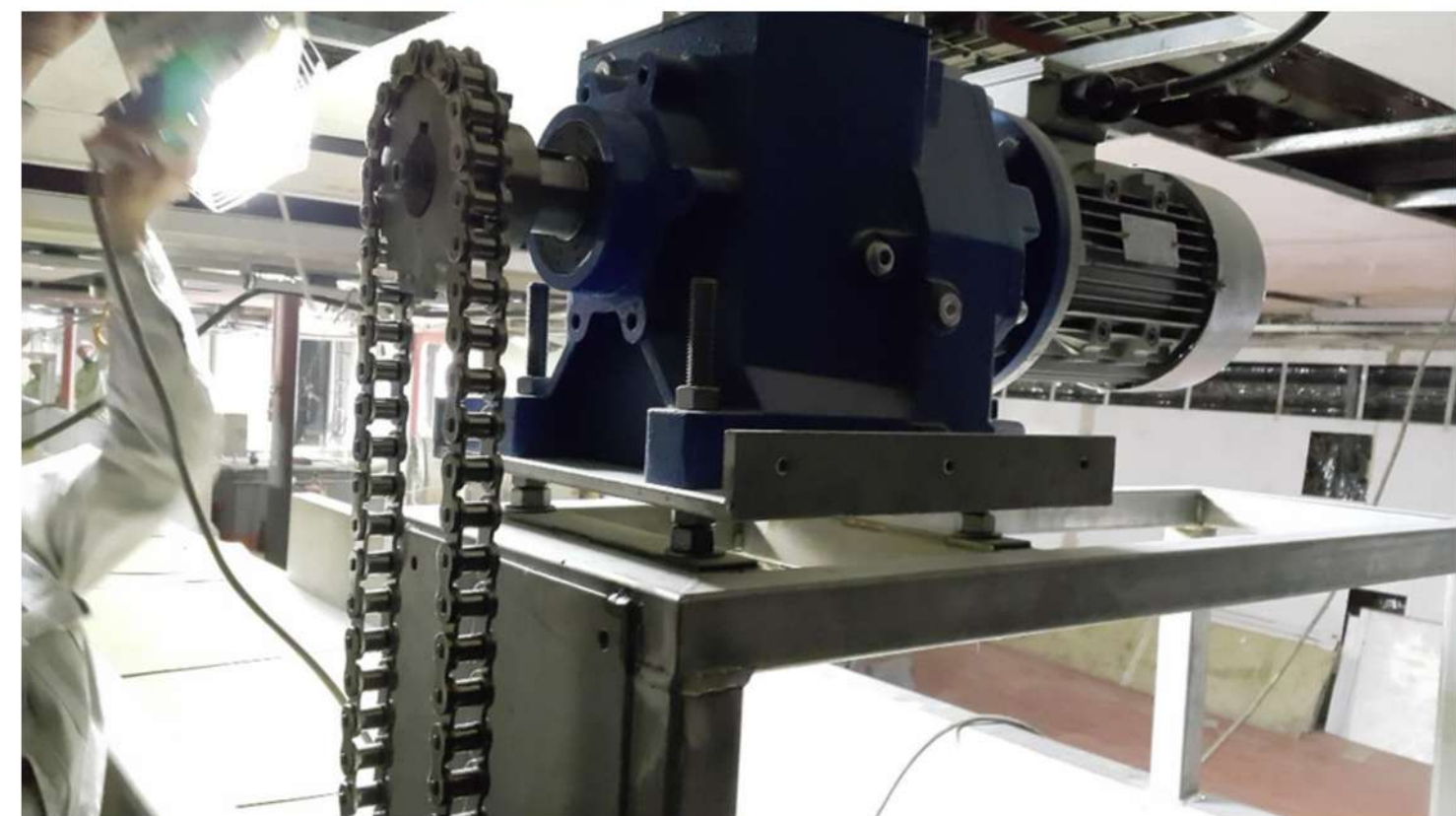




# OUR projects



## SOUTH-EAST ASIA SHIPYARD Factory





# Typical PROJECTS



VINA KYOEI STEEL FACTORY - 2014



# Typical PROJECTS



## VIETNAM FLOAT GLASS FACTORY – 2015 & 2016

NTP scope: Provide Labor for Project VFG Compressed Natural Gas Firing (2015)



# Typical PROJECTS



SOC HUNG YEN FACTORY 2016



# Typical PROJECTS



GAS POWER PLANT CAMAU FACTORY 2016



# Typical PROJECTS



VINA KRAFT PAPER FACTORY - 2016



# Typical PROJECTS



SAIGON CENTRE PHASE 2 & 3 2016



# Typical PROJECTS



KENTON NOTE HOTEL COMPLEX - 2017



# Typical PROJECTS





# Typical PROJECTS

## SUNJIN F&F FACTORY



### HIGHLIGHTS

**Investor** : CJSC

**Contractor** : NTP Engineering JSC.

**Scale project** : 5ha – 34,316m<sup>2</sup>

**Location** : Dong Van 4, Ha Nam

**Work Items** : Supply and installation of conveyor systems and bucket elevators.

**Duration** : 2017

**Product** : Animal feed



# Typical PROJECTS

## HAID HAI DUONG FACTORY



### HIGHLIGHTS

**Investor :** CJSC

**Contractor :** NTP

**Scale project :** 5,9 ha – 43,000 m<sup>2</sup>

**Location :** Dai An I.Z, Hai Duong.

**Work Items :** Supply and installation of rubber trough belt conveyor systems

**Duration :** 2017

**Product :** Animal feed



# Typical PROJECTS



**PAIHONG FACTORY - 2017**



# Typical PROJECTS





# Typical PROJECTS



**SUNSEAP 168MWP VIETNAM SOLAR POWER - 2018**



# Typical PROJECTS



TOYO INK - GRAVURE INK PHASE 3 - 2018



# Typical PROJECTS



TON DONG A STEEL FACTORY - 2018



# Typical PROJECTS





# Typical PROJECTS



EZ LAND BAO MINH DEPARTMENT 2018



# Typical PROJECTS



**NOVA BEACH CAM RANH - 2019**



# Typical PROJECTS



**CONDOTEL – SOUTH HOI AN COMPLEX - 2019**



# Typical PROJECTS



EMPIRE CITY – THU THIEM - 2019



# Typical PROJECTS



**VINHOMES GRAND PARK - 2019**



# Typical PROJECTS



**LONG SON - CHEMICAL AND FLY ASH STORAGE - 2020**



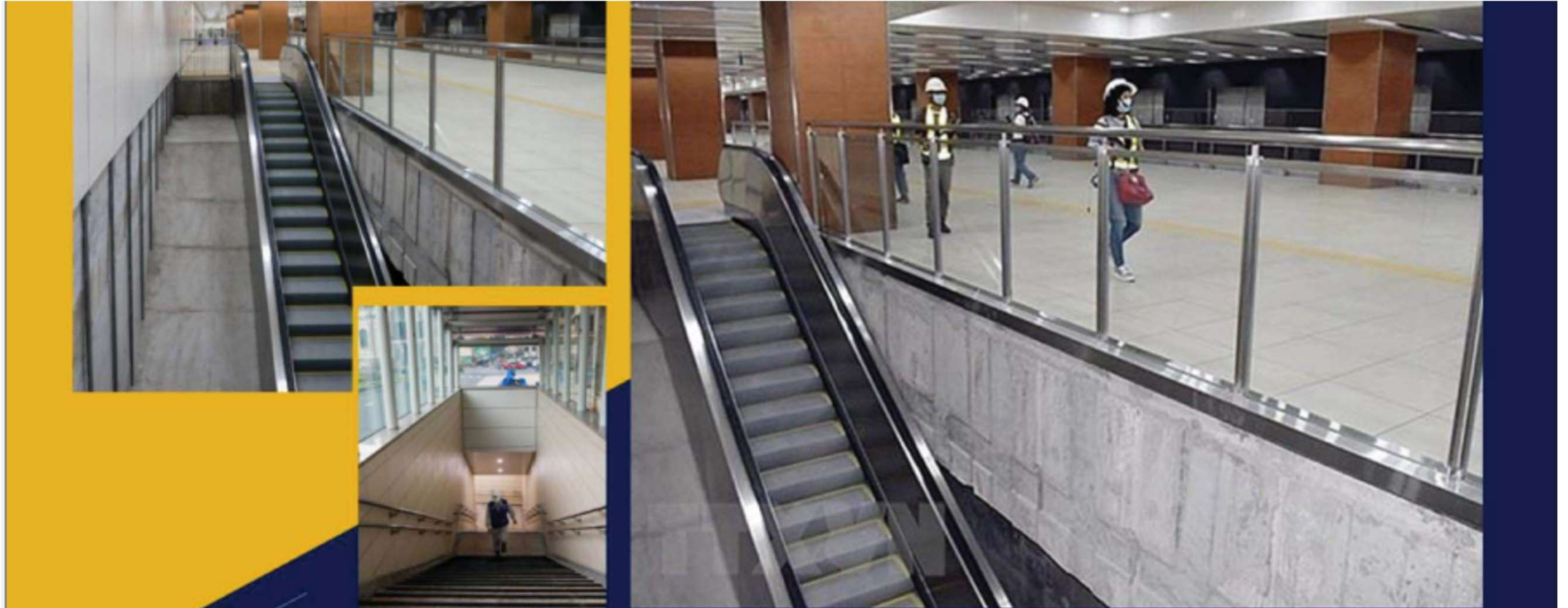
# Typical PROJECTS



LOTUS AROMA FACTORY (DRAGON FRUIT WINE) - 2020



# Typical PROJECTS



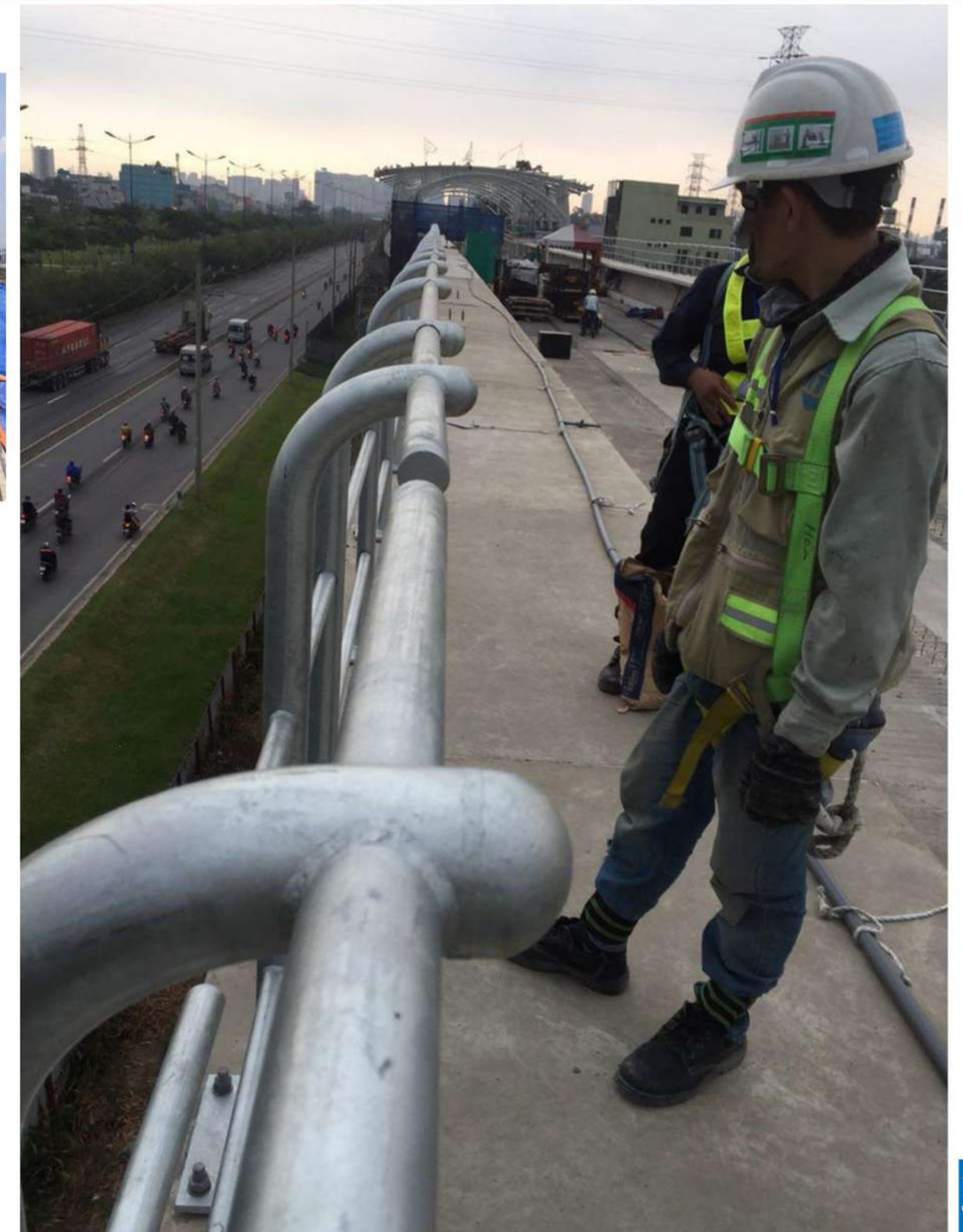
HOANG MYT Line 1 METRO DEPOT 2020



# OUR projects



## HCMC MRT Line 1 METRO (Steel Handrail)





# Typical PROJECTS





# Typical PROJECTS



**RESIDENTIAL AREA - CLUSTER A30 - 2020**

**NUON DUC PHUOC KIEN NEW URBAN - CO VILLA METRO CITY**



# Typical PROJECTS





# Typical PROJECTS



THE ST MORITZ - 2020



# Typical PROJECTS

## BIOMAR VIET UC FACTORY



### HIGHLIGHTS

**Investor** : CIDECO

**Contractor** : NTP Engineering JSC.

**Scale project** : 315 HA

**Location** : Giong Nhan Hamlet, Hiep Thanh Commune, Bac Lieu City, Bac Lieu Province

**Work Items** : Supply and installation of conveyor systems and bucket elevators.

**Duration** : 2021

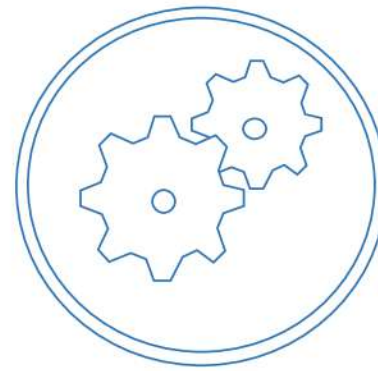
**Product** : SEAFOOD PROCESSING FACTORY



## WHAT MAKES US DIFFERENT



**Always** listen to the opinions of customers and transfer the goodwill of clients into reality.



**Always** produce products and services with attractive form, quality assurance, reasonable price, all because of satisfied customers



**Always** meet the high standards of quality in accordance with customer expectations.



# OUR SERVICE



All products sold are warranted for 1 year



Team support knowledgeable staff is available 24/7 to answer your call



All products sold are warranted extended for 3 year



All products sold have spare parts



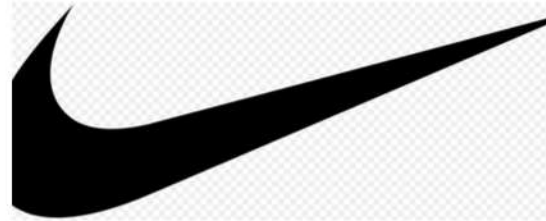
Receive maintenance of machinery systems

## HIGHLIGHTS

- \*Nam Thuan Phat committed to providing you with the best support services. We guarantee you will save time and budget. Customer service department will respond quickly and efficiently to your requirements.
- \*Nam Thuan Phat utilizes experienced and dedicated staff to manage the mechanical system maintenance process so you can focus on your core business. We specialize in helping customers mechanical system works well, and our knowledgeable staff is available 24/7 to answer your call. Whether your equipment requires scheduled or unscheduled service.



# OUR CUSTOMERS





## PROFESSIONAL CUSTOMER SERVICE

Our support service will keep your systems operating **24** hours a day – **365** days a year



### CUSTOMER CARE

Nam Thuan Phat committed to providing you with the best support services. We guarantee you will save time and budget. Customer service department will respond quickly and efficiently to your requirements.



### HOTLINE SUPPORT

Concern about the design?, Not sure what you need? Question about bill? Need help managing your budget? We are here to help you.



### CUSTOMER INSIGHT

We always do our best to understand the needs and preferences of customer. We are proud to offer the most reasonable solution for your company.



### SPARE PARTS

Repair, replacement parts, mechanical conveyor equipment, plant, civil, and industrial.





# NAM THUAN PHAT ENGINEERING Joint Stock Company

---


## Head Office

 10A Truong Cong Ding Street, Ward 14, Tan Binh District, HCMC, Vietnam.

 +84 8 6267 7308

---

## Factory

 Lot G Hoang Gia Industrial Park, My Hanh Nam Commune, Duc Hoa Dist., Long An Province.