

UPster U 400

– Glass and dishwashing machine

The professional solution for sparkling clean glassware.

The ultimate in user-friendliness with a crystal-clear display, simple one-click buttons, and a digital read-out of the wash and rinse water temperatures. High-quality design with double-walled thermal insulation to keep the heat in and minimize energy use. Scores highly for: slotting under the counter, plugging in, and enjoying sparkling results!



Technical data

Glass and dishwashing machine

Fresh water line: Soft cold water 0-3°dH
3-phase current: 3N PE 400V 50Hz

Rack capacity/h (theoretical) Programme cycle

30 / 20 / 15 racks/h
total 120 / 180 / 240 s (glass / dish / dish intensive)

Rack dimension Entry height

400 x 400 mm
300 mm

Dimensions (W x Hmin x D)

460 x 700 x 600 mm

Electrical feeding cable

3-phase current 3N PE 400V 50Hz*
Total connected load: 3,7 kW
max. rated current: 12,8 A

Local fuse protection

16 A

Machine protection class

IP X4

Equipment

MIKE control
Infrared interface for wireless communication
Soft start
Boiler safety device
Automatic self-cleaning when tank is drained

Fresh water supply

Minimum flow pressure 250 kPa / 2,5 bar in front of solenoid valve
Maximum pressure 500 kPa / 5,0 bar
Max. supply water temperature 60 °C

Flow rate

min. 0,22 l/s at 250 kPa/2,5 bar flow pressure

Final rinse water quantity

2,2 liters/cycle

Boiler

Contents: 4,2 l
Heater: 3,00 kW
Temperature: 65 °C, with dish wash programme 83 °C

	Tank / boiler locked
Wash tank	Filling: 11 l Heater: 2,00 kW Temperature: 60 °C
Wash pump Dosing of rinse aid	Performance: 0,55 kW Hose pump (24 V) with time control and suction lance
Detergent dosage	Hose pump (24 V) with time control and suction lance
Material	Cladding: 1.4301 Wash tank: 1.4301 Boiler: 1.4404
Heat emission	for 15 programme cycles/h total: 1,0 kW perceptible: 0,7 kW latent: 0,3 kW
Ventilation flow rate Steam emission Sound level	250 m ³ /h 0,5 kg/h 62 dB(A)
Net / gross weight	45,0 kg / 54,0 kg (standard packaging)
Packaging dimensions (W x H x D)	560 x 900 x 690 mm (standard packaging)

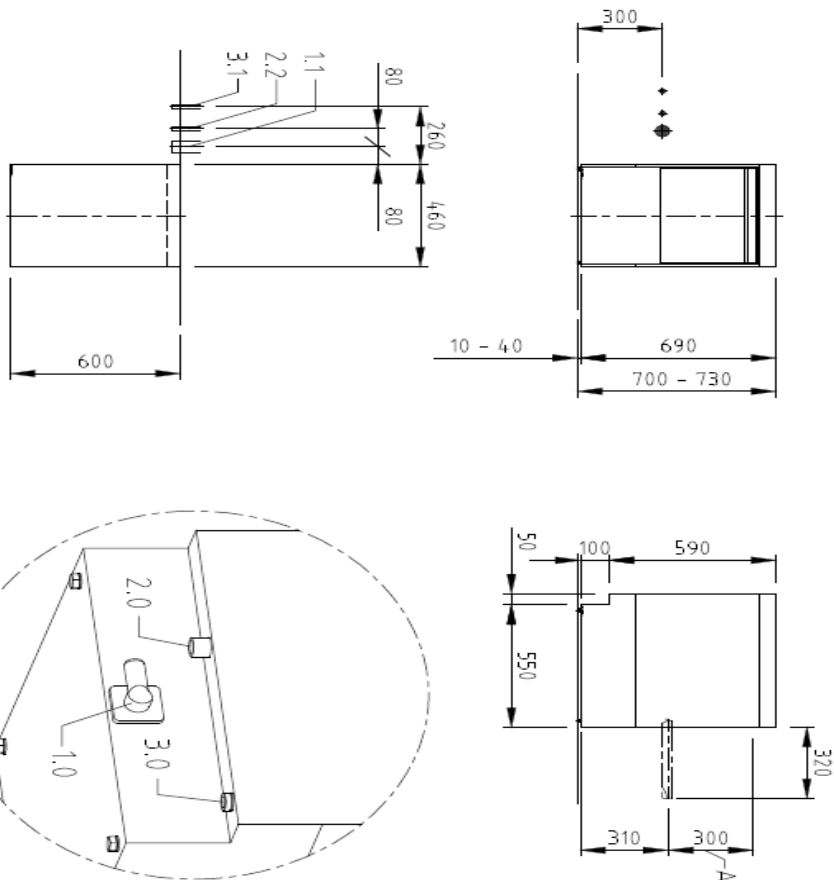
***Note:**

Electrical equipment suitable for supply voltage:
3N PE 400 V 50 HZ (3N PE 380-415 V 50 Hz)
1N PE 230 V 50 HZ (1N PE 220-240 V 50 Hz)

* Duration of wash cycle depending on temperature of feeding water:
prolongation of wash cycle with cold water connection or single phase execution;
For machine with single phase connection, warm water connection is recommended.

Technical Drawing:

1.0	machine connection: Drain line hose fitted as odour trap in interior of machine	DN 22	
1.1	drain (max. 700 mm above of the floor level)	DN 50	
2.0	machine connection: fresh water line	G 3/4"	
2.2	soft cold water 10°C	DN 20	
	max. 0.54 mmol/l CaCO ₃ / 53.4 ppm/CaCO ₃ (max. 3°GH) approx. water flow rate 0.22 l/s min. flow pressure: 250 kPa / 2.5 bar upstream of the solenoid valve; maximum pressure: 500 kPa / 5 bar stopcock and fine screen ≤ 25 µm	G 3/4 a	
3.0	machine connection: electricity connecting cable	5G x 2.5 mm ² 3N PE 400V ~ 50Hz	
3.1	electricity supply to the machine nominal current / - capacity	12.8 A / 3.7 kW	
	Ⓢ Voltage equalising cable	Fuse protection: 16 A	
Electrical equipment suitable for supply voltage 3N PE 3x0-4/5 V 50 Hz / 1N PE 220-240 V 50 Hz			
heat load of the wash room			
in case of 15 program cycles / h		total	ca. 10 kW
		perceptible	ca. 0.7 kW
all cables, pipes etc leaving machine		latent	ca. 0.3 kW
			1.6 m
the position of the connection piping can also be mirror-inverted			
Options available on machine			
(A) Entry height			
Rinse agent pipe and suction lance (blue connector)			
Detergent pipe and suction lance			
Drain pump			



MEIKO MIDDLE EAST FZE GoldDiamond Park, Building 6, office #206 P.O. Box 282365, U.A.E.-Dubai Phone +971 43 41 51 72 E-MAIL: var@meikohd.com		Revision	Type
It is neither allowed to give this drawing without our permission to a third party for information or reproduction, nor may it be used for competition purposes, we reserve all rights! Please note: This document is only valid in conjunction with the conditions defined in the document Important remarks: * Can be requested from the manufacturer or downloaded from PartnerNet.		Reference DISHWASHER STANDARD DRAWING / ARE	UPSTER U 400
Order-No.	Scale	Scale	Order-No.
S00-P30706_4	1:25	drawn: 19.04.16 m-plan	checked: 19.04.16 m/ja

MEP00006363A.1.1

© copyright by MEIKO

© copyright by MEIKO