

卡丽 KARAT[®]

安装说明书 INSTALLATION INSTRUCTIONS

卡丽S型/P型排水管
KARAT S TRAP/P TRAP
12606T-M-S/12607T-M-S

BEFORE YOU BEGIN

Please read these instructions carefully familiarize yourself with the required tools, materials, and installation sequences. Follow the sections that pertain to your particular installation. This will help you avoid costly mistakes. In addition to proper installation, read all operating and safety instructions.

All information in these instructions is based upon the latest product information available at the time of publication. Karat reserves the right to make changes in product characteristics, packaging, or availability at any time without notice.

These instructions contain important care, cleaning, and warranty information, **please leave instructions for the consumer**

安装之前

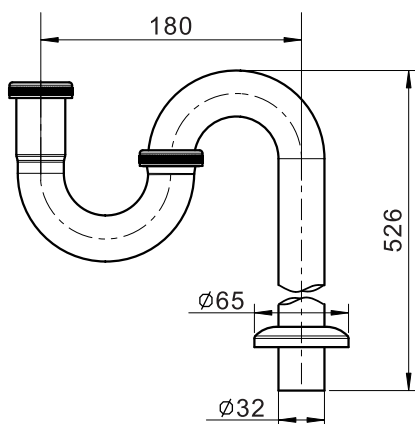
请仔细阅读说明书，熟悉所需工具、材料和安装顺序，参照相关章节完成您所需的安装，以避免昂贵的损失，除了正确的安装外，请详阅所有的操作和安全说明。

本说明书所含的一切资料均以印刷时所有的最新产品为准，卡丽公司保留权利随时更改产品特性、包装或供应情况，恕不另行通知。

本说明书也包含了有关保养、清洁及产品担保等重要信息，请交予用户保存。

ROUGHING-IN

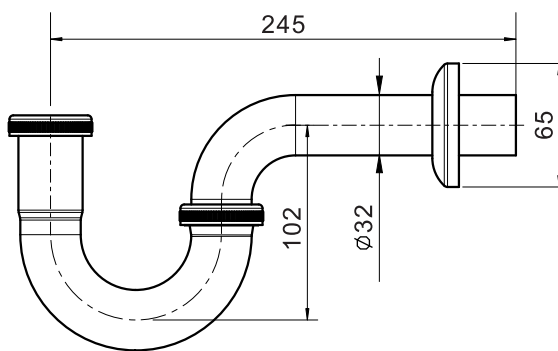
Unit:mm



12606T-M-S

尺寸图

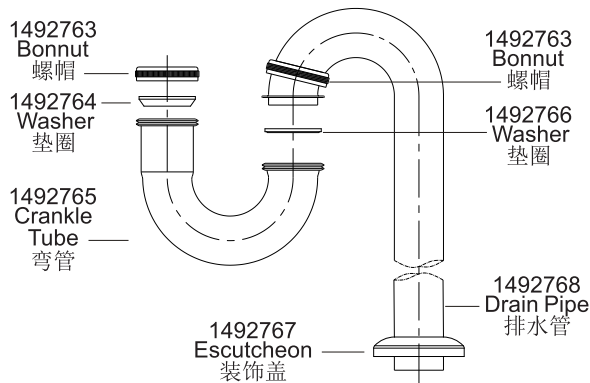
单位:毫米



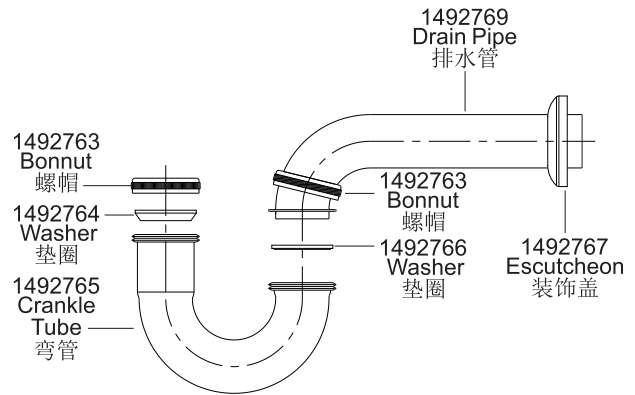
12607T-M-S

INSTALLATION

安装



12606T-M-S



12607T-M-S

CLEANING INSTRUCTIONS

清理说明

All finishes : clean the finish with a mild soap and warm water. wipe entire surface completely dry with a clean soft cloth. Many cleaners may contain chemicals , such as ammonia chlorine, toilet cleaner etc., Which could adversely affect the finish and are not recommended for cleaning.

适用于所有加工处理过的表面：
以中性肥皂水清洗镀层表面，再以干净的软布彻底擦干整个表面。许多清洁剂，比如氨水、去污粉及洁厕灵等，会对电镀表面造成伤害，切勿使用。

ONE -YEAR WARRANTY

一年有限担保

Our company provides one years warranty for its drain
Our company will,at its election ,repair ,replace or make appropriate adjustment where our company inspection discloses any such defects occurring in normal usage within warranty.

本产品自购买之日起，在正常使用下我司将提供一年的质量担保，经核查后，我司有权决定是修理、更改、还是做适当的调整。

The warranty, including products, is limited clearly. Our company is not responsible for other damages appeared after the warranty. Also,the warranty dose not cover problems arising from labor charges,incorrect use and installation.

这里的担保，包括产品都已明确地限制在该担保期内。本公司对以后出现的损坏不负有任何责任。担保也不包括外观损伤，使用不当及未按说明书安装的损失。

Shanghai Kohler International Trade Co., Ltd.
Address: Room 1348, Floor 13, No.55, Xi Li Road,
China (Shanghai) Pilot Free Trade Zone
Tel: 400-920-8262
Postcode: 200131

上海科勒国际贸易有限公司
地址：中国（上海）自由贸易试验区西里路55号13层1348部位
电话：400-920-8262
邮编：200131