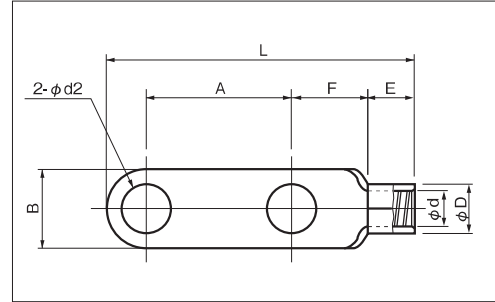
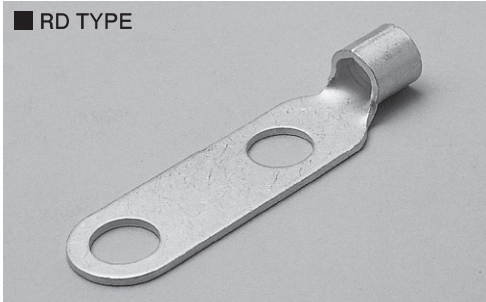


# RING TERMINALS (RD TYPE)

JIS C 2805



A

RoHS10  
See page 2

PART NUMBER	DIMENSIONS mm								WIRE RANGE		TOOL No.		STD QTY/BOX
	φd2	B	L	A	F	E	φD	φd	STRANDED mm <sup>2</sup>	AWG or MCM	HAND TOOL No.		
											TOOL BODY No.	HEAD No.	
<b>RD 38-10</b>	11.0	22.0	77.3	32.0	21.3	13.0	13.4	9.4	26.66	2	NOP 60 NOM 60		50
<b>RD 38-12</b>	13.0		85.3	40.0							NOP 150HA NOM 150		
<b>RD 38-w/o HOLE</b>	-		-	-	NA 20 N20 38								
<b>RD 60-10</b> ●	11.0	22.0	81.0	32.0	19.5	18.5	15.6	11.4	42.42	1/0	NOP 60, NOM 60 NOP 150HA, NOM 150		50
<b>RD 60-12</b> ●	14.0		89.0	40.0							NA 20 N20 60		
<b>RD 60-14</b> ●	16.0		97.0	-	NOP 700 NOM 2500A NOM 3000						NOH 300K		
<b>RD 60-w/o HOLE</b>	-	32.0	-	-	-	-	-	-	-	-	-	-	-
<b>RD 70-10</b> ○	11.0	24.0	91.0	32.0	20.0	19.0	17.6	13.5	60.57	2/0	NOP 150HA NOM 150		20
<b>RD 70-12</b> ○	14.0			40.0							NOP 700 NOM 2500A NOM 3000	NOH 300K	
<b>RD 70-w/o HOLE</b>	-			-	-						-	-	
<b>RD 80-10</b> ○	11.0	27.0	86.0	32.0	21.5	19.0	19.6	14.5	76.28	3/0	NOP 150HA NOM 150		20
<b>RD 80-12</b> ○	14.0		94.0	40.0							24.0	NOH 300K	
<b>RD 80-14</b> ○	16.0		99.0	-	-						-	-	
<b>RD 80-w/o HOLE</b>	-	32.0	-	-	-	-	-	-	-	-	-	-	-
<b>RD 100-10</b> ●	11.0	28.5	87.0	32.0	21.7	19.0	22.5	16.4	96.3	4/0	NOP 150HA NOM 150		20
<b>RD 100-12</b> ●	14.0		95.0	40.0							24.0	NOH 300K	
<b>RD 100-14</b> ●	16.0		99.0	-	-						-	-	
<b>RD 100-w/o HOLE</b>	-	32.0	-	-	-	-	-	-	-	-	-	-	-
<b>RD 150-12</b> ●	14.0	36.0	106.0	40.0	21.0	27.0	26.6	19.5	117.2	250- 300 MCM	NOP 150HA NOM 150		20
<b>RD 150-14</b> ●	16.0			-	-				152.05		NOP 700 NOM 2500A NOM 3000	NOH 300K	
<b>RD 150-w/o HOLE</b>	-			-	-				-		-	-	
<b>RD 180-12</b> ○	14.0	38.5	111.0	40.0	22.0	29.7	28.5	20.2	152.05	300- 350 MCM	NOP 700 NOM 2500A NOM 3000		10
<b>RD 180-14</b> ○	16.0			-	-				192.6		NOH 300K		
<b>RD 180-w/o HOLE</b>	-			-	-				192.6		-	-	
<b>RD 200-12</b> ●	14.0	44.0	117.0	40.0	21.8	33.2	32.9	24.0	192.6	400 MCM	NOP 700 NOM 2500A NOM 3000		10
<b>RD 200-14</b> ●	16.0			-	-				242.27		NOH 300K		
<b>RD 200-w/o HOLE</b>	-			-	-				-		-	-	
<b>RD 250-12</b>	14.0	44.0	117.0	40.0	21.8	33.2	35.6	26.5	250	-	NOP 700 NOM 2500A NOM 3000		5
<b>RD 250-14</b>	16.0			-	-				-		*NOH 300K		
<b>RD 250-w/o HOLE</b>	-			-	-				-		-	-	
<b>RD 325-12</b> ●	14.0	50.5	124.0	40.0	22.2	36.5	37.8	28.0	242.27	500- 600 MCM	NOP 700 NOM 2500A NOM 3000		5
<b>RD 325-14</b> ●	16.0			-	-				325		NOH 300K		
<b>RD 325-w/o HOLE</b>	-			-	-				-		-	-	

NOTE

- 1) ● : JIS, UL, CSA ○ : UL, CSA
- 2) Refer to page 14 for UL/ CSA and proper strip length of wire.
- 3) Please use the dies for 325mm $\phi$ , to crimp RD 250-\* with NOH 300K.
- 4) REC-Li250M (Maxell Izumi Co., Ltd.) is also available for RD 250-12, RD 250-14 (250mm $\phi$ ).