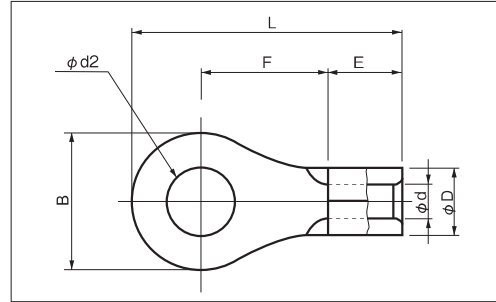
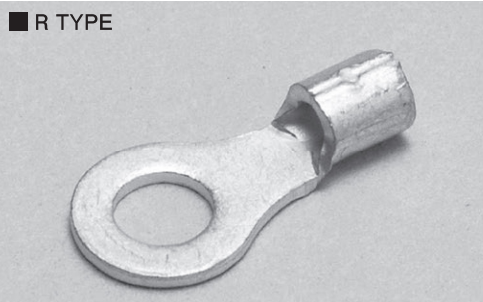


RING TERMINALS (R TYPE)

JIS C 2805



A

RoHS10
See page 2

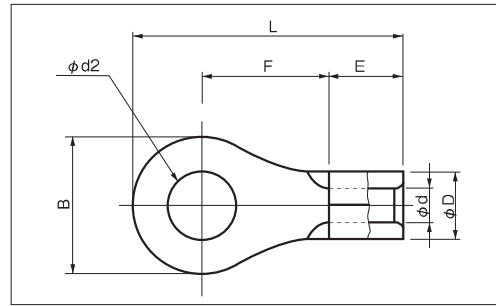
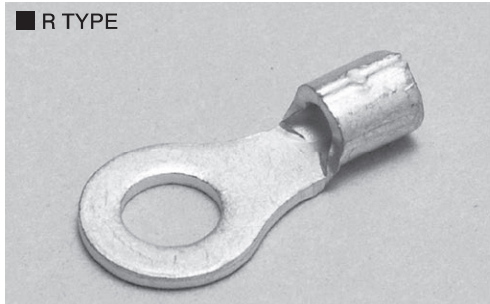
PART NUMBER	DIMENSIONS mm							WIRE RANGE			TOOL No.		STD QTY/BOX							
	$\phi d2$	B	L	F	E	ϕD	ϕd	SOLID mm	STRANDED mm ²	AWG	HAND TOOL No.	DIES No.								
R 0.3-2	○	2.2	5.2	12.0	4.9	4.5	2.2	1.0	-	0.2~0.5 0.3~0.5 UL·CSA USE	24-20 22-20 UL·CSA USE	NH 69		1,000 (100×10)						
R 0.3-3	○	3.2		12.0	4.9															
R 0.3-3N	○	3.2	14.3	7.2																
R 0.3-3.5	○	3.7	6.6	15.0	7.2															
R 0.3-4	○	4.3	6.6	15.5	7.0															
R 0.3-5	○	5.3	8.0	15.5	7.0						NA 10 NA 3	N10 04 N3 70								
R 0.75-3	△	3.2	5.6	12.0	4.7	4.5	2.5	1.4	-	0.3~0.75	22-18	NH 69		1,000 (100×10)						
R 0.75-3.5	△	3.7		12.0	4.7															
R 0.75-4	○	4.3	6.6	13.3	5.5															
R 1.25-2	○	2.2	5.5	12.0	4.7	4.5	3.4	1.7	0.57 1.44	0.25 1.65	22-16	NH 1 NH 61A NH 69		1,000 (100×10)						
R 1.25-2S	○	2.2	5.7	11.9	4.5															
R 1.25-3	●	3.2	5.5	12.0	4.7															
R 1.25-3N	○	3.2	5.6	14.9	7.6															
R 1.25-3S	○	3.2	5.7	11.9	4.5															
R 1.25-3.5N	○	3.7	5.6	14.9	7.6															
R 1.25-3.5S	○	3.7	5.7	11.9	4.5															
R 1.25-3.5	●	3.7	6.6	13.3	5.5															
R 1.25-3.5M	○	3.7	6.8	13.9	6.0															
R 1.25-3.5L	○	3.7	8.0	15.6	7.1															
R 1.25-4S	○	4.3	6.6	13.3	5.5															
R 1.25-4M	○	4.3	6.8	13.9	6.0															
R 1.25-4	●	4.3	8.0	15.6	7.1															
R 1.25-5	●	5.3	8.0	15.6	7.1															
R 1.25-6	○	6.4	12.0	20.2	9.7															
R 1.25-8	○	8.4																		
R 1.25-10	○	10.5										16.5	25.0		12.2					

NOTE 1) ● : JIS, UL, CSA ○ : UL, CSA △ : UL
2) Refer to page 14 for UL/ CSA and proper strip length of wire.

RING TERMINALS (R TYPE)

JIS C 2805

■ R TYPE



RoHS10
See page 2

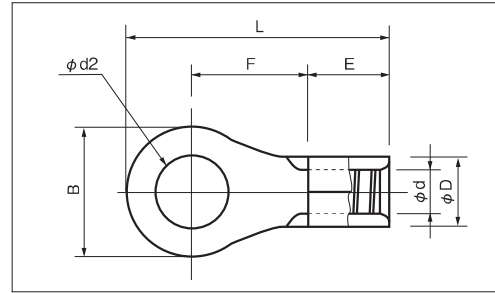
PART NUMBER	DIMENSIONS mm							WIRE RANGE			TOOL No.		STD QTY/BOX							
	phi d2	B	L	F	E	phi D	phi d	SOLID mm	STRANDED mm ²	AWG	HAND TOOL No.	DIES No.								
R 2-2 ○	2.2	6.5	12.7	4.9	4.5	4.2	2.3	1.14 }	1.04 }	16-14	NH 1 NH 9 NH 61A NH 69		1,000 (100×10)							
R 2-3N ○	3.2	5.6	14.9	7.6																
R 2-3S ○		5.7	12.3	4.9																
R 2-3 ○		6.5	12.7																	
R 2-3.5N ○	3.7	5.6	14.9	7.6																
R 2-3.5NS ○		6.5	12.7	4.9																
R 2-3.5 ●		6.6	14.4	6.6																
R 2-3.5S ○		6.6	15.4	7.6																
R 2-3.5M ○	8.0	16.0	7.5																	
R 2-4S ○	4.3	6.6	14.4	6.6																
R 2-4M ○		8.0	16.0	7.5																
R 2-4 ●		8.5	16.5	7.7																
R 2-5M ○	5.3	8.0	16.0	7.5																
R 2-5 ●		9.5	17.0	7.7																
R 2-5L ○		12.0	21.5	11.0																
R 2-6 ●	6.4	12.0	21.5	11.0																
R 2-8 ●	8.4																			
R 2-10 ○	10.5	15.0	24.5	12.5																
R 2-12 ○	13.0	19.0	28.5	14.5																
R 2-16 ○	17.0	27.5	41.0	23.0																
R 2-18 ○	19.0																			
R 2-20 ○	21.0																			
R 3.5-4S ※	4.3	7.0	17.5	8.0	6.0	5.1	3.0	1.82 }	2.63 }	12	NH 1 NH 9		1,000 (100×10)							
R 3.5-4 ○		8.0	18.0																	
R 3.5-5N ※ ○	5.3	9.6	20.0	9.2																
R 3.5-5S ○		12.0	21.4	9.4																
R 3.5-6 ○	6.4	9.6	20.0	9.2																
R 3.5-6L ○		12.0	21.4	9.4																
R 3.5-8 ○	8.4	13.5	25.5	12.7														NA 10 NA 3	N10 02 N3 7	500 (50×10)

- NOTE 1) ● : JIS, UL, CSA ○ : UL, CSA
 2) Refer to page 14 for UL/CSA and proper strip length of wire.
 3) ※Specification is partly different from other ring terminals.

RING TERMINALS (R TYPE)

JIS C 2805

■ R TYPE



RoHS10
See page 2

A

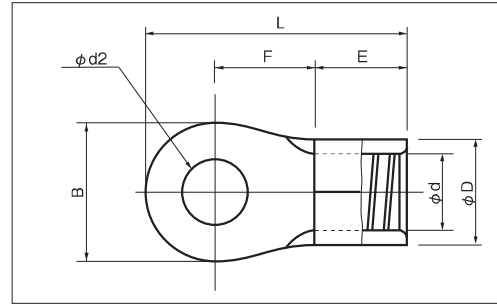
PART NUMBER	DIMENSIONS mm							WIRE RANGE			TOOL No.		STD QTY/BOX	
	φ d2	B	L	F	E	φ D	φ d	SOLID mm	STRANDED mm ²	AWG	HAND TOOL No.			
											TOOL BODY No.	DIES No.		
R 5.5-3M ※ ○	3.2	6.5	16.9	7.2	6.5	5.6	3.4	1.82 2.89	2.63 6.64	12-10	NH 1 NH 9	1,000 (100×10)		
R 5.5-3N ※ ○		7.0	17.2											
R 5.5-3S ※ ○		9.0	18.2											
R 5.5-3.5N ※ ○	3.7	7.0	17.2											
R 5.5-3.5S ※ ○		9.0	18.2											
R 5.5-3.5 ○		9.5	19.5	8.2										
R 5.5-4N ※ ○	4.3	7.0	17.2	7.2										
R 5.5-4S ※ ○		9.0	18.2											
R 5.5-4 ●		9.5	19.5	8.2										
R 5.5-5N ※ ○	5.3	8.0	17.7	7.2										
R 5.5-5S ※ ○		9.0	18.2											
R 5.5-5 ●		9.5	19.5	8.2										
R 5.5-6S ※	6.4	9.0	23.0	12.0										
R 5.5-6 ●		12.0	10.5											
R 5.5-8S ※	8.4	13.2	22.1	9.0										
R 5.5-8 ●		15.0	14.0											
R 5.5-10 ●	10.5	28.0	14.0											
R 5.5-12 ○	13.0	19.2	32.5	16.4										
R 5.5-14 ○	15.0	29.5	48.0	26.7	NA 10 NA 3	N10 03 N3 7	500 (50×10)							
R 5.5-16	17.0													
R 5.5-18	19.0													
R 5.5-20	21.0	250 (25×10)												
R 8-4S ○	4.3	8.0	21.5	9.1	8.4	7.1	4.5	2.89 3.65	6.64 10.52	8	NH 1 NH 9 NOP 60 NOM 60	1,000 (100×10)		
R 8-4 ○		12.0	23.5	9.1										
R 8-5N ※		9.0	22.0	9.1										
R 8-5S ○	5.3	10.0	22.5	9.1										
R 8-5 ●		12.0	23.5											
R 8-6S ○	6.4	10.0	22.5											
R 8-6 ●		12.0	23.5											
R 8-8S	8.4	15.0	29.5	13.6										
R 8-8 ●		10.5	100											
R 8-10 ●	13.0	20.0	33.5	15.1									500 (50×10)	
R 8-12 ○	15.0	22.0	37.0	17.6										
R 8-14 ○	17.0	50												
R 8-16	19.0	31.0	50.0	26.1									NA 20 N20 08	200 (20×10)
R 8-18	21.0													
R 8-20	21.0													

- NOTE 1) ● : JIS, UL, CSA ○ : UL, CSA
 2) Refer to page 14 for UL/CSA and proper strip length of wire.
 3) ※Specification is partly different from other ring terminals.

RING TERMINALS (R TYPE)

JIS C 2805

■ R TYPE



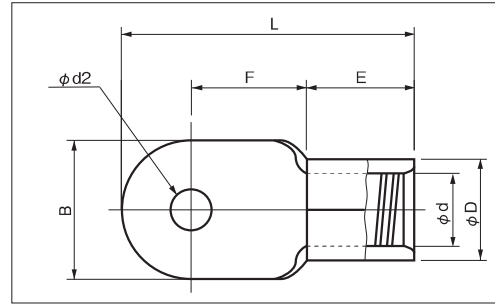
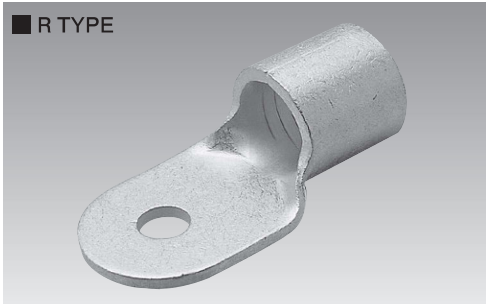
RoHS10
See page 2

PART NUMBER	DIMENSIONS mm							WIRE RANGE			TOOL No.		STD QTY/BOX																																									
	$\phi d2$	B	L	F	E	ϕD	ϕd	SOLID mm	STRANDED mm ²	AWG	HAND TOOL No.	TOOL BODY No.		HEAD No.																																								
R 14-5N ※	5.3	9.0	26.0	11.5	10.0	9.0	5.8	-	10.52 16.78	6	NH 9 NOP 60 NOM 60 NOP 150HA NOM 150	NA 20	N20 14	100																																								
R 14-5S ※ ○		10.0	26.5																																																			
R 14-5 ●		12.0	27.5																																																			
R 14-6S ※ ○	6.4	10.0	26.5	12.0	11.6	7.7	-	16.78 26.66	4	NOP 60 NOM 60 NOP 150HA NOM 150					NA 20	N20 22	100																																					
R 14-6 ●		12.0	27.5																																																			
R 14-6L ○	16.0	32.5	14.5																																																			
R 14-8S ※ ○	8.4	12.0	27.5															11.5	13.0	13.4	9.4	-	26.66 42.42	2	NOP 60 NOM 60 NOP 150HA NOM 150	NA 20	N20 38	100																										
R 14-8 ●		16.0	32.5															14.5																																				
R 14-10 ●	10.5	16.0	32.5															14.5																																				
R 14-12 ●	13.0	22.0	40.0															19.0											17.0	52.3	24.3	-	-	-	-	-	-	50																
R 14-14 ●	15.0																																																					
R 14-16 ○	17.0	30.0	48.5															23.5																																				
R 14-20 ○	21.0																																																					
R 22-5N ※	5.3	9.3	27.5								11.0	13.0	13.4	9.4				-																					-	-	-	-	-	-										
R 22-5S ※ ○		11.8	31.4								13.5																																											
R 22-5 ○		16.5	33.3	13.0																																																		
R 22-6S ※ ○	6.4	11.8	31.4	13.5	17.0	51.3	24.3	-	-	-	-				-	-	-																																					
R 22-6 ●		16.5	33.3	13.0																																																		
R 22-8S ※ ○	8.4	11.8	31.4	13.5															13.0	13.4	9.4	-	-	-	-	-	-	-																										
R 22-8 ●		16.5	33.3	13.0																																																		
R 22-10S ※	10.5	16.5	33.3	13.0																																									17.0	51.3	24.3	-	-	-	-	-	-	-
R 22-10 ●		17.5	36.3	15.5																																																		
R 22-12 ●	13.0	22.0	42.3	19.3																									17.0	51.3	24.3	-	-	-	-	-	-	-																
R 22-14 ●	15.0																																																					
R 22-16 ○	17.0	30.0	51.3	24.3																																																		
R 22-20 ○	21.0																																																					
R 38-5 ○	5.3	22.0	42.3	18.3								13.0	13.4	9.4				-																					-	-	-	-	-	-										
R 38-6S ※ ○	6.4	15.3	39.0	18.3																																																		
R 38-6 ○		22.0	42.3	18.3																																																		
R 38-8S ※ ○	8.4	15.3	39.0	18.3	17.0	52.3	24.3	-	-	-	-				-	-	-																																					
R 38-8 ●		22.0	42.3	18.3																																																		
R 38-10S ※ ○	10.5	15.3	39.0	18.3															17.0	52.3	24.3	-	-	-	-	-	-	-																										
R 38-10 ●		22.0	42.3	18.3																																																		
R 38-12 ●	13.0	22.0	42.3	18.3																																									17.0	52.3	24.3	-	-	-	-	-	-	-
R 38-14 ●	15.0																																																					
R 38-16 ○	17.0	30.0	52.3	24.3																																																		
R 38-20 ○	21.0																																																					

- NOTE 1) ● : JIS, UL, CSA ○ : UL, CSA
 2) Refer to page 14 for UL/CSA and proper strip length of wire.
 3) Current, tensile length, etc. are rated lower than other terminals of the same wire size (Refer to page 143)
 4) ※Specification is partly different from other ring terminals.

RING TERMINALS (R TYPE)

JIS C 2805



RoHS10
See page 2

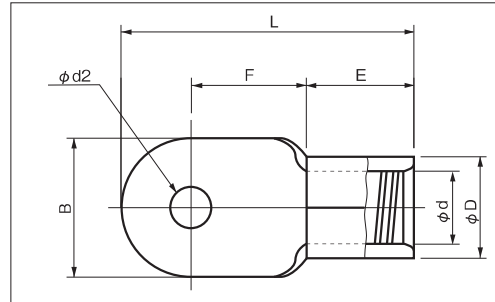
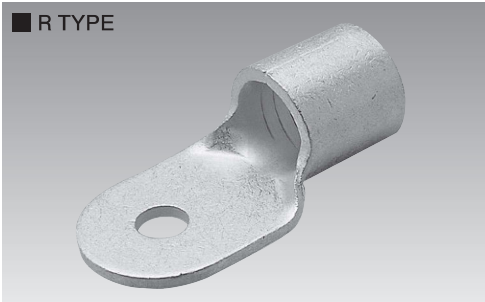
A

PART NUMBER	DIMENSIONS mm							WIRE RANGE			TOOL No.		STD QTY/BOX
	$\phi d2$	B	L	F	E	ϕD	ϕd	SOLID mm	STRANDED mm ²	AWG or MCM	HAND TOOL No.	TOOL BODY No.	
R 60-5	5.3	22.0	48.5	19.0	18.5	15.6	11.4	-	42.42 } 60.57	1/0	NOP 60 NOP 60 NOP 150HA NOP 150		100
R 60-6S ※	6.4	16.0	46.5	20.0									
R 60-6 ○	6.4	22.0	48.5	19.0									
R 60-8S ※	8.4	16.0	46.5	20.0									
R 60-8 ●	8.4	22.0	48.5	19.0									
R 60-10S ※	10.5	16.0	46.5	20.0									
R 60-10 ●	10.5	22.0	48.5	19.0									
R 60-12 ●	13.0	32.0	57.3	22.8									
R 60-14 ●	15.0												
R 60-16 ○	17.0												
R 60-20 ○	21.0												
R 60-22 ○	23.0										NA 20 NOP 700 NOM 2500A NOM 3000	N20 60 NOH 300K	25
R 70-6	6.4	24.0	51.0	20.0	19.0	17.7	13.5	-	60.57 } 76.28	2/0	NOP 150HA NOP 150		25
R 70-8 ○	8.4												
R 70-10 ○	10.5												
R 70-12 ○	13.0												
R 70-14 ○	15.0												
R 70-16 ○	17.0												
R 70-20 ○	21.0												
R 70-22 ○	23.0												
R 80-5	5.3	27.0	52.5	20.0	19.0	19.6	14.5	-	76.28 } 96.3	3/0	NOP 150HA NOP 150		50
R 80-6	6.4												
R 80-8 ○	8.4												
R 80-10 ○	10.5												
R 80-12 ○	13.0												
R 80-14 ○	15.0												
R 80-16 ○	17.0												
R 80-20 ○	21.0												
R 80-22 ○	23.0												
R 100-8 ○	8.4										32.0	62.5	
R 100-10 ●	10.5												
R 100-10L	10.5												
R 100-12 ●	13.0												
R 100-12L	13.0												
R 100-14 ●	15.0												
R 100-16 ●	17.0												
R 100-18 ●	19.0												
R 100-20 ●	21.0												
R 100-22 ○	23.0												
											NOP 700 NOM 2500A NOM 3000	NOH 300K	

- NOTE 1) ● : JIS, UL, CSA ○ : UL, CSA
 2) Refer to page 14 for UL/CSA and proper strip length of wire.
 3) Current, tensile length, etc. are rated lower than other terminals of the same wire size (Refer to page 143)
 4) ※Specification is partly different from other ring terminals.

RING TERMINALS (R TYPE)

JIS C 2805



RoHS10
See page 2

PART NUMBER	DIMENSIONS mm							WIRE RANGE			TOOL No.		STD QTY/BOX	
	$\phi d2$	B	L	F	E	ϕD	ϕd	SOLID mm	STRANDED mm ²	MCM	HAND TOOL No.	TOOL BODY No.		HEAD No.
R 150-8 ○	8.4	36.0	67.3	22.3	27.0	26.6	19.5	-	117.2 152.05	250 300 MCM	NOP 150HA NOM 150		20	
R 150-10 ●	10.5													
R 150-12 ●	13.0													
R 150-12L ○	13.0		83.3	38.3										
R 150-14 ●	15.0													
R 150-16 ●	17.0													
R 150-18 ●	19.0													
R 150-20 ●	21.0													
R 150-22 ○	23.0													
R 150-27 ○	28.0	42.0	35.3	29.7	28.5	20.2	-	152.05 192.6	300 350 MCM	NOP 700 NOM 2500A NOM 3000		NOH 300K	10	
R 180-10 ○	10.5	38.5	77.0											28.0
R 180-12 ○	13.0													
R 180-14 ○	15.0													
R 180-16 ○	17.0		87.0											38.0
R 180-18 ○	19.0													
R 180-20 ○	21.0													
R 180-22 ○	23.0													
R 200-10N ○	10.5	44.0	73.2											23.0
R 200-10S ○			80.0	24.8										
R 200-12N ○	13.0		73.2	23.0										
R 200-12S ○			80.0	24.8										
R 200-12 ●			91.0	35.8										
R 200-14N ○	15.0		73.2	23.0										
R 200-14S ○			80.0	24.8										
R 200-14 ●			91.0	35.8										
R 200-16N ○	17.0		73.2	23.0										
R 200-16S ○			80.0	24.8										
R 200-16 ●			91.0	35.8										
R 200-18 ●	19.0													
R 200-20 ●	21.0													
R 200-22 ●	23.0													
R 200-24 ●	25.0													
R 200-27 ●	28.0													

NOTE 1) ● : JIS, UL, CSA ○ : UL, CSA
2) Refer to page 14 for UL/CSA and proper strip length of wire.