



e 965

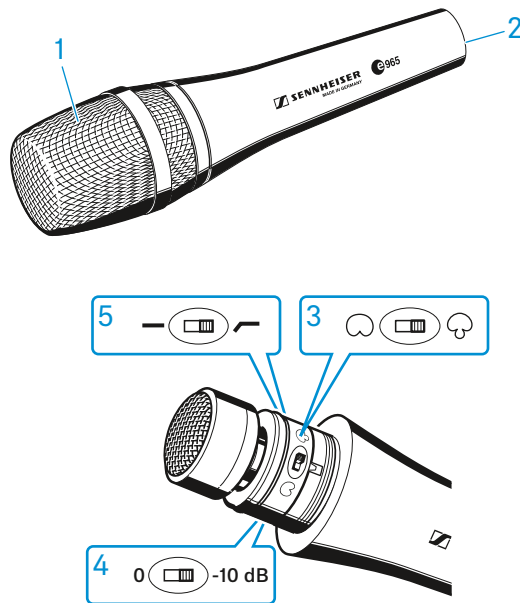
Instruction manual



Delivery includes

- e 965
- MZQ 800 microphone clamp
- pouch
- quick guide
- safety guide

Product overview



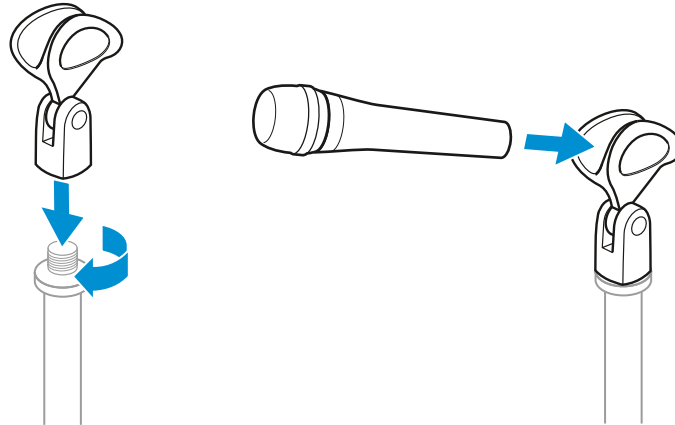
1. Sound inlet basket
2. XLR-3 connector
3. Directivity switch
4. Sensitivity switch
5. Bass roll-off switch



Installation

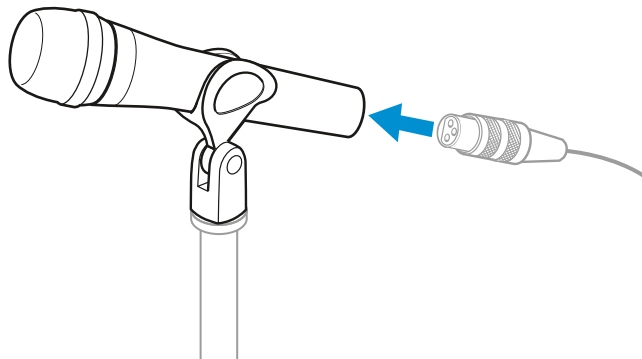
Attaching the microphone

- ▷ Screw the microphone clamp to a stand.
- ▷ Place the microphone with its back end into the microphone clamp.
- ▷ Orient the microphone together with the microphone clamp.



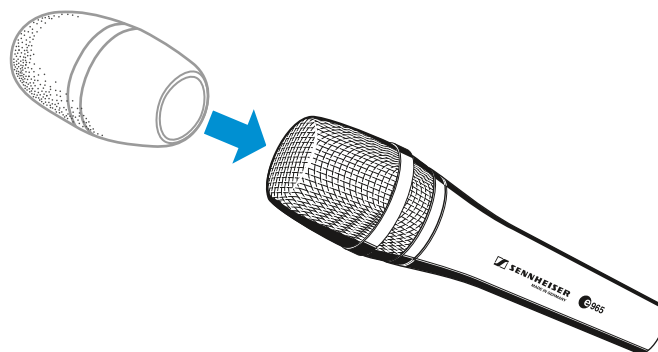
Connecting the microphone

- ▷ Connect the XLR-3 socket of the microphone cable (optional accessories) to the XLR-3 socket of the microphone.



Using the windshield

- ▷ Place the MZW 4032 (optional accessories) windshield over the microphone head.



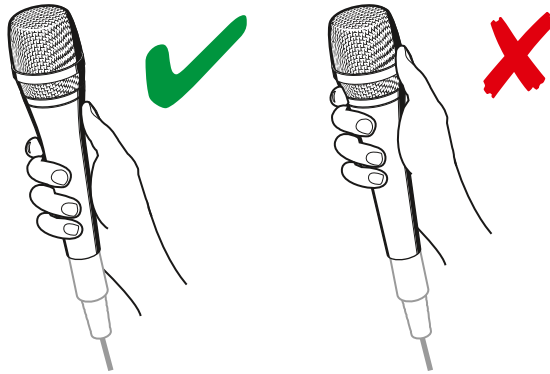


Operation

Holding the microphone

If you cover the microphone head during transmission, this will change the pick-up pattern of the microphone and consequently the sound.

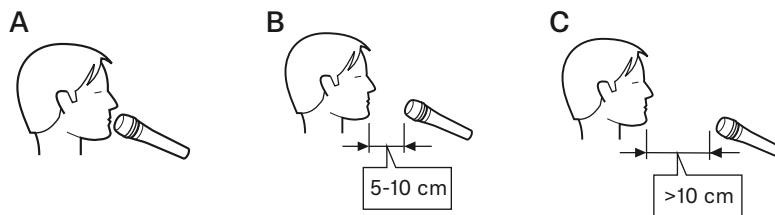
- ▷ Only hold the microphone by its body.



Positioning the microphone

- ▷ It is vital to observe the following notes:

Position	Resulting sound	Commentary
A	High proximity effect (large bass boost) Powerful, direct sound	Very little crosstalk from other sound sources
B	Less proximity effect (less bass boost) Some room ambience, natural, balanced sound	More crosstalk from other sound sources
C	Very little proximity effect (minimal bass boost) More room ambience, indirect sound	Higher crosstalk from other sound sources



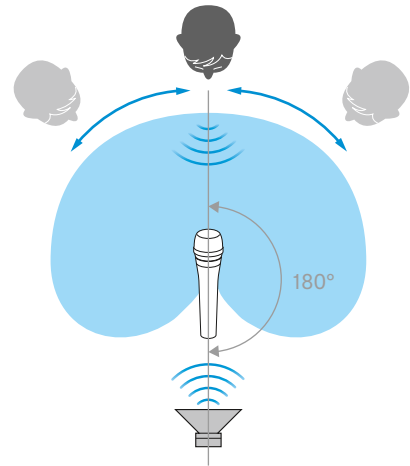
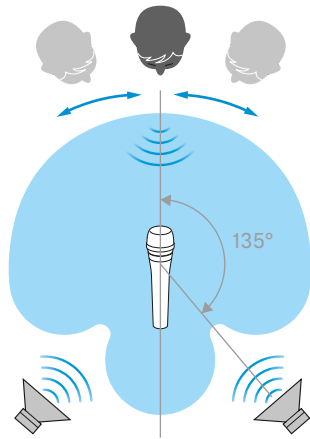
If sibilance occurs:

- ▷ Position the microphone slightly to the side and not directly in front of the mouth.



Positioning the monitor loudspeakers

- ▷ To prevent feedback and crosstalk, position your monitor loudspeakers in the angle area of the highest cancellation of the microphone (cardioid: 180°; super-cardioid: 135°).





Using the microphone

CAUTION

DANGER OF DAMAGE TO THE MICROPHONE!



The switches on the microphone can be damaged if you try to operate them using tools.

- ▷ Only operate the switches on the microphone using your fingers.
-

- ▷ Unscrew the sound inlet basket.

Adjusting the pick-up pattern

- ▷ Set the directivity switch to the desired position:

Pos.	Pick-up pattern
	Cardioid A cardioid pick-up pattern also picks up sound from the sides. This pattern is good for picking up several vocalists at once, e.g. a choir or ensemble.
	Super-cardioid A super-cardioid pickup pattern reduces pick-up from the sides. This pattern is therefore good for picking up individual an individual sound source in a noisy environment. Crosstalk from other instruments on stage is drastically reduced.



Adjusting the attenuation

- ▷ Set the pad switch to the desired position:

Pos.	Attenuation
0 dB	No attenuation
-10 dB	Reduces the sensitivity of the microphone capsule by 10 dB, increases the maximum sound pressure level.

Adjusting the low-cut/roll-off filter

- ▷ Set the low-cut/roll-off switch to the desired position:

Pos.	Low-cut/roll-off filter
	Off, linear frequency response
	Eliminates low-frequency noise such as impact sound, fan noise, etc.



Cleaning and maintaining the e 965

CAUTION

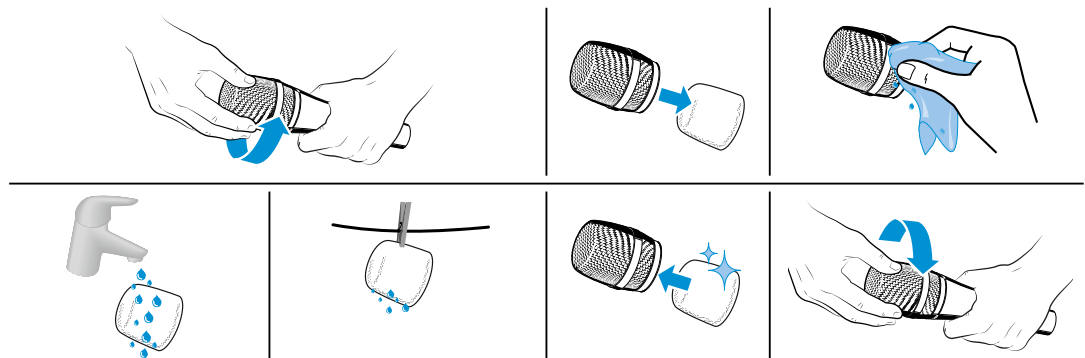
LIQUIDS CAN DAMAGE THE ELECTRONICS OF THE PRODUCT!

Liquids entering the housing of the product can cause a short-circuit and damage the electronics.

- ▷ Keep all liquids away from the product.
 - ▷ Do not use any solvents or cleansing agents.
-
- ▷ Disconnect the products from the power supply system and remove rechargeable batteries and batteries before you begin cleaning.
 - ▷ Clean all products only with a soft, dry cloth.

Cleaning the sound inlet basket of the microphone module

- ▷ Unscrew the sound inlet basket.
- ▷ Remove the foam insert from the sound inlet basket.
- ▷ Use a slightly damp cloth to clean the sound inlet basket from the inside and outside.
- ▷ If necessary, clean the foam insert with a mild detergent or replace the foam insert.
- ▷ Dry the foam insert.
- ▷ Reinsert the foam insert.
- ▷ Replace the sound inlet basket on the microphone head and screw it tight.

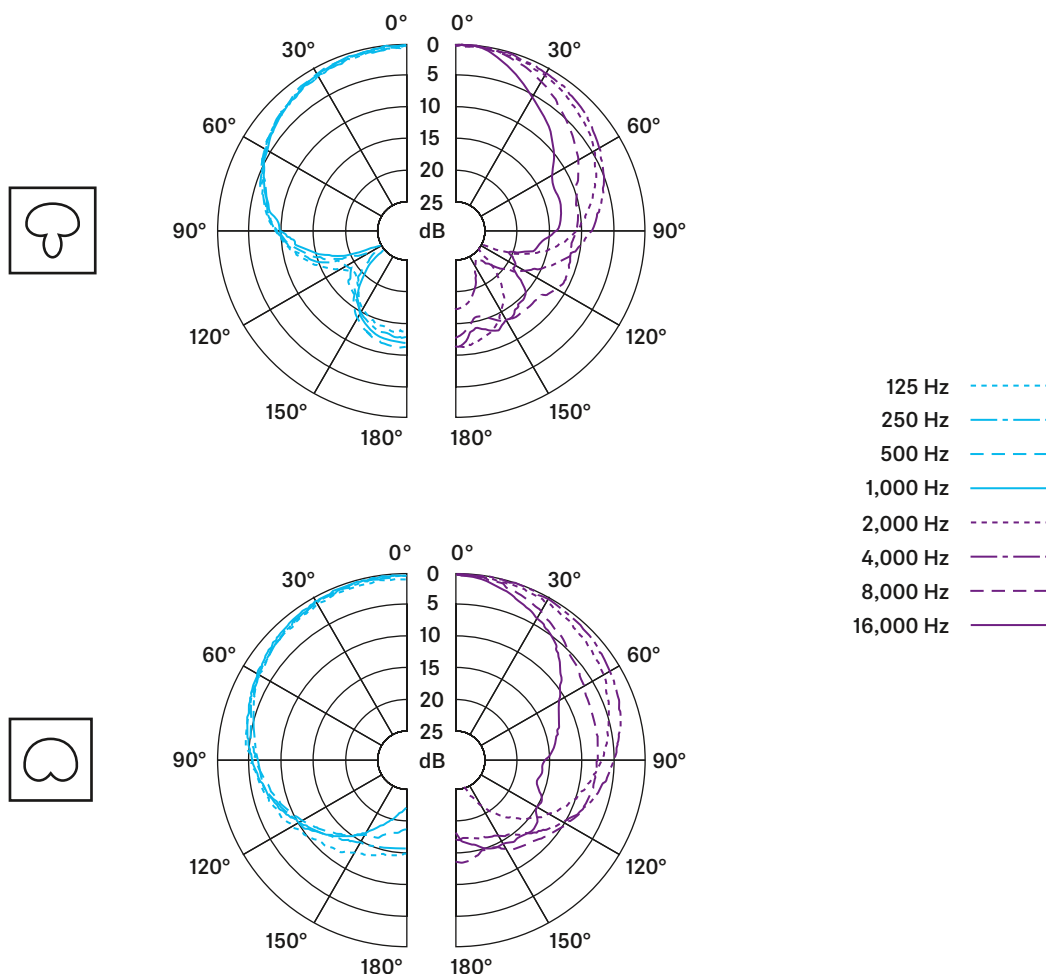




Specifications

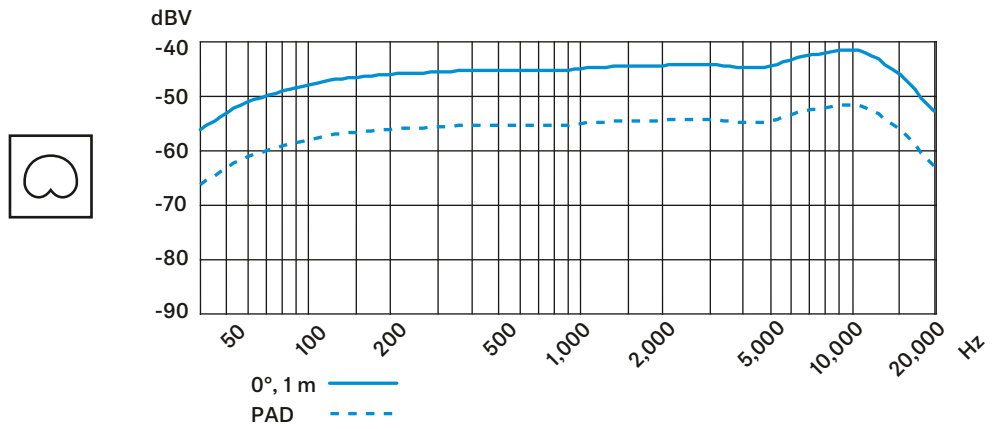
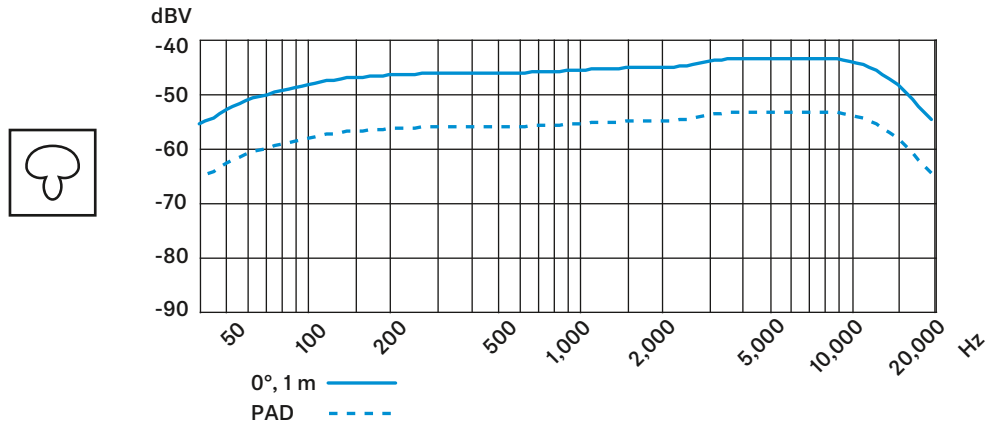
Transducer principle	externally polarized dual-diaphragm condenser microphone
Membran diameter	25.4 mm/1"
Frequency response	40 - 20,000 Hz
Pick-up pattern	cardioid/super-cardioid, switchable
Sensitivity (free field, no load) with preattenuation	7 mV/Pa 2.3 mV/Pa
Nominal impedance (at 1 kHz)	50 Ω
Min. terminating impedance	1 k Ω
Max. sound pressure level (at 1 kHz) with preattenuation	142 dB 152 dB
Equivalent noise level	21 dB(A)
Phantomspesung	48 V / 3.5 mA
Connector	XLR-3
Temperature range	0 °C to +40 °C
Dimensions	\varnothing 48 x 199 mm
Weight	396 g

Polar pattern





Frequency response



Connector assignment

