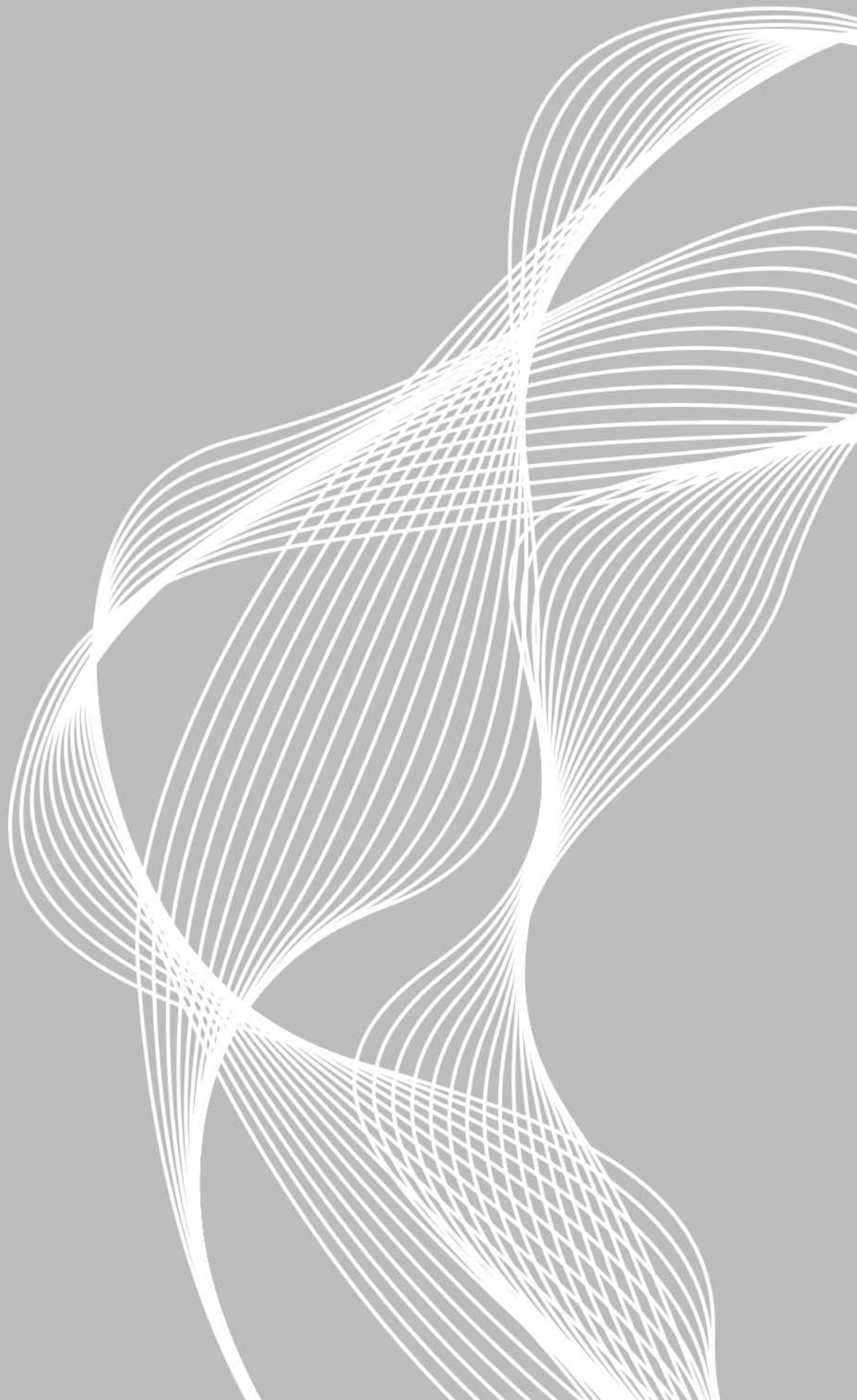


PHONIC

Persistent Quality & Innovation

Product Catalogue





CONTENT

Sonic Palette

Sonic Palette 1

Mixer

AM SE Edition 3

Digital Mixer

Kratos Series 10

Power Mixer

POWERPOD Series 12

Power Amplifier

MAX Series 15

XP Series 16

ICON Series 16

Mixers & Amplifiers

GA Series 17

Digital Power Amplifier

XTRIX Series 21

Signal Processors

I Series i3600/i4800 24

I Series i8800/i1616 26

CEILING Speaker

CS Series 28

Mobile PA

SAFARI Series 29

Column Speaker

AIR Series 31

Monitor Speaker

AURRAS Series 33

PA Loudspeaker

MSK Series 35

Line Array

AXIS Series 37

USB Microphone

SPM-1 39

Audio Analyzer

PAA3X 41

PAA6 42



Sonic Palette

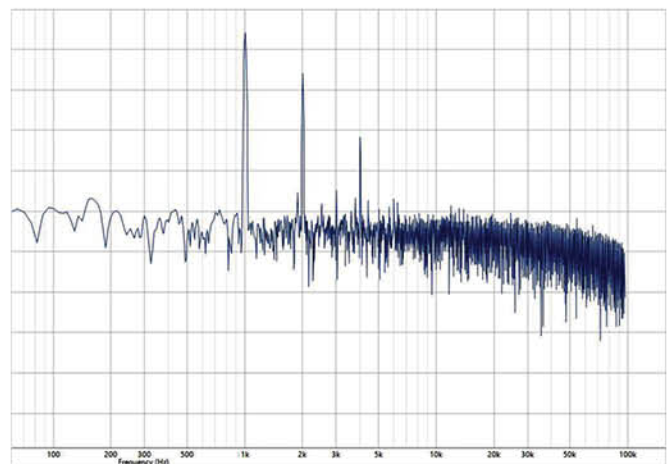
This just makes better sounding music

Recreates next-level sound with unrivaled depth and clarity

Harmonic distortion introduces new harmonics that are musically connected to the original sound. When additional harmonics are added, the nature and tone of the sound alter. Generally, this adds depth, presence, or warmth to the sound, making it richer and more engaging.



Harmonics are classified into two categories: even and odd. Even harmonics are produced by multiplying the fundamental frequency by even numbers, whereas odd harmonics are produced by multiplying the fundamental frequency by odd numbers. For example, if your fundamental tone is a 1 kHz sine wave, an even harmonic is 2 kHz, and an odd harmonic is 3 kHz. Each set produces a distinct sound, which is essential for creating a captivating sound.



Top View



Back View



Front View



Hybrid (Digital/Analog) processing
(Combined with EQ/Compressor)

DAW Playback – DAC – Sonic Palette – ADC – DAW Recording



Analog Tracking
(Combined with EQ/Compressor)

Analog Tracking – Pre – Sonic Palette – ADC – DAW Recording



Application

- Recording
- Podcasting
- Live performance
- Mixing
- Mastering



AM SE Edition



USB 2.0
Audio Interface



Harmonic
Enhancement

Common Features

- Harmonic Enhancement - gives your mix a vintage feel and vibe
- Professional quality stereo USB recording interface provides audio superior to CDs (24-bit, 48 kHz)
- Audio Loopback allows you record computer audio and microphone input simultaneously
- USB interface with Dry signal, Input mix, and Loopback slide switch (sent to computer)
- Extremely low-noise construction handles all sounds with the utmost attention.
- Great sound begins with a decent mic preamp (Ultra-low noise and up to 70 dB of gain)

	AM6SE	AM8SE	AM12SE	AM14SE
Total Channels	5	6	8	12
Mono/Stereo Input Channels	1/2	2/2	4/2	4/4
Mic Preamps	1	2	4	6
AUX/EFX Sends	-	1	1	2
AUX Return	-	1 stereo	-	2 stereo
Compressor	1	2	4	4
Metering	2 x 10	2 x 10	2 x 10	2 x 20
Equalization	2-band (mono)	2-band (mono), 3-band (stereo)	2-band (mono)	3-band swept mid (mono), 4-band (stereo)
32/40-bit DFX Processor	-	-	16 Programs	16 Programs
Key Features	Harmonic Enhancement	Harmonic Enhancement	Harmonic Enhancement	Harmonic Enhancement
	24-bit/48 kHz USB 2.0 connectivity	24-bit/48 kHz USB 2.0 connectivity	24-bit/48 kHz USB 2.0 connectivity	24-bit/48 kHz USB 2.0 connectivity
	Phantom Power	Phantom Power	Phantom Power	Phantom Power



The new Sonic Edition of Phonic's legendary AM series mixers gives you more options than ever before. We begin with high quality ultra-low-noise mic preamps with up to 70 dB of gain. A user assignable "Dry," "Input Mix," and "Loopback" are also delivered back to the computer. Harmonic Enhancement adds "polish sounds" to your stereo recordings, adding depth, presence, or warmth and making them richer and more engaging. High-fidelity sound is provided by new ultra-low-noise preamps. New power supply rails with especially low-noise construction are sensitive to all sounds.



AM SE Edition

AM6SE

2-Mic/Line 2-Stereo Input Compact Mixer with USB Interface and Harmonic Enhancement



- Two balanced Mic/Line "Combo" inputs with 3-band EQ and variable compressor
- Two stereo inputs with 3-band EQs
- Stereo USB audio interface for PC and Mac computers (24-bit, 48 KHz)
- Audio Loopback allows you record computer audio and microphone input simultaneously
- Dry signal, Input mix, and Loopback slide switch (sent to computer)
- Harmonic Enhancement - gives your mix a vintage feel and vibe
- One stereo AUX return
- Post-fader AUX send on every input
- Global +48V phantom power for microphone inputs
- Peak and VU metering (10 segment)
- Peak indicators on both mono input channels
- Balanced master output with 60mm fader control
- Headset mic and headphone connectors perfect for livestreaming and web conferencing
- Powered through USB (5V - 20V DC), adapter included

AM8SE

4-Mic/Line 2-Stereo Input Compact Mixer with DFX, plus USB Interface and Harmonic Enhancement



- Four mono mic/line "Combo" channels with user-adjustable compressors
- Two stereo channels with EFX, balance and level controls
- Stereo USB audio interface for PC and Mac computers (24-bit, 48 KHz)
- Audio Loopback allows you record computer audio and microphone input simultaneously
- Dry signal, Input mix, and Loopback slide switch (sent to computer)
- Harmonic Enhancement - gives your mix a vintage feel and vibe
- 32/40-bit digital effect processor with 16 effect programs and one main parameter control
- EFX send control available on each channel
- 75Hz low-cut filter and 2-band EQ on each mono channel
- Peak and VU metering (10 segment)
- +48V phantom power for microphone inputs
- Phones source matrix for maximum monitor flexibility
- EFX/AUX send cue for monitoring individual channel
- Balanced main outputs with 60mm fader



AM12SE

4-Mono 4-Stereo Input 2-Group Compact Mixer with DFX, plus USB Interface and Harmonic Enhancement

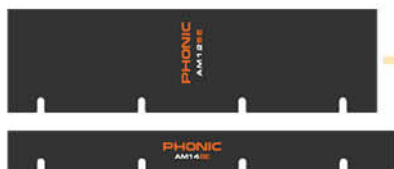
- Four mono mic/line "Combo" input channels with user-adjustable compressors
- Two stereo mic/line channels with XLR inputs, plus two stereo line inputs
- Stereo USB audio interface for PC and Mac computers (24-bit, 48 KHz)
- Audio Loopback allows you record computer audio and microphone input simultaneously
- Dry signal, Input mix, and Loopback slide switch (sent to computer)
- Harmonic Enhancement - gives your mix a vintage feel and vibe
- 32/40-bit digital effect processor with 16 effect programs and one main parameter control
- 3-band EQ with swept mid on each mono channel, 4-band on stereo channels
- AUX sends on each channel
- +48V phantom power on mic channels
- Phones source matrix for maximum monitor flexibility
- EFX/AUX send cue for monitoring individual channels
- Balanced main outputs with independent 60mm L/R faders



AM14SE

6-Mono 4-Stereo Input 2-Group Mixer with DFX, plus USB Interface and Harmonic Enhancement

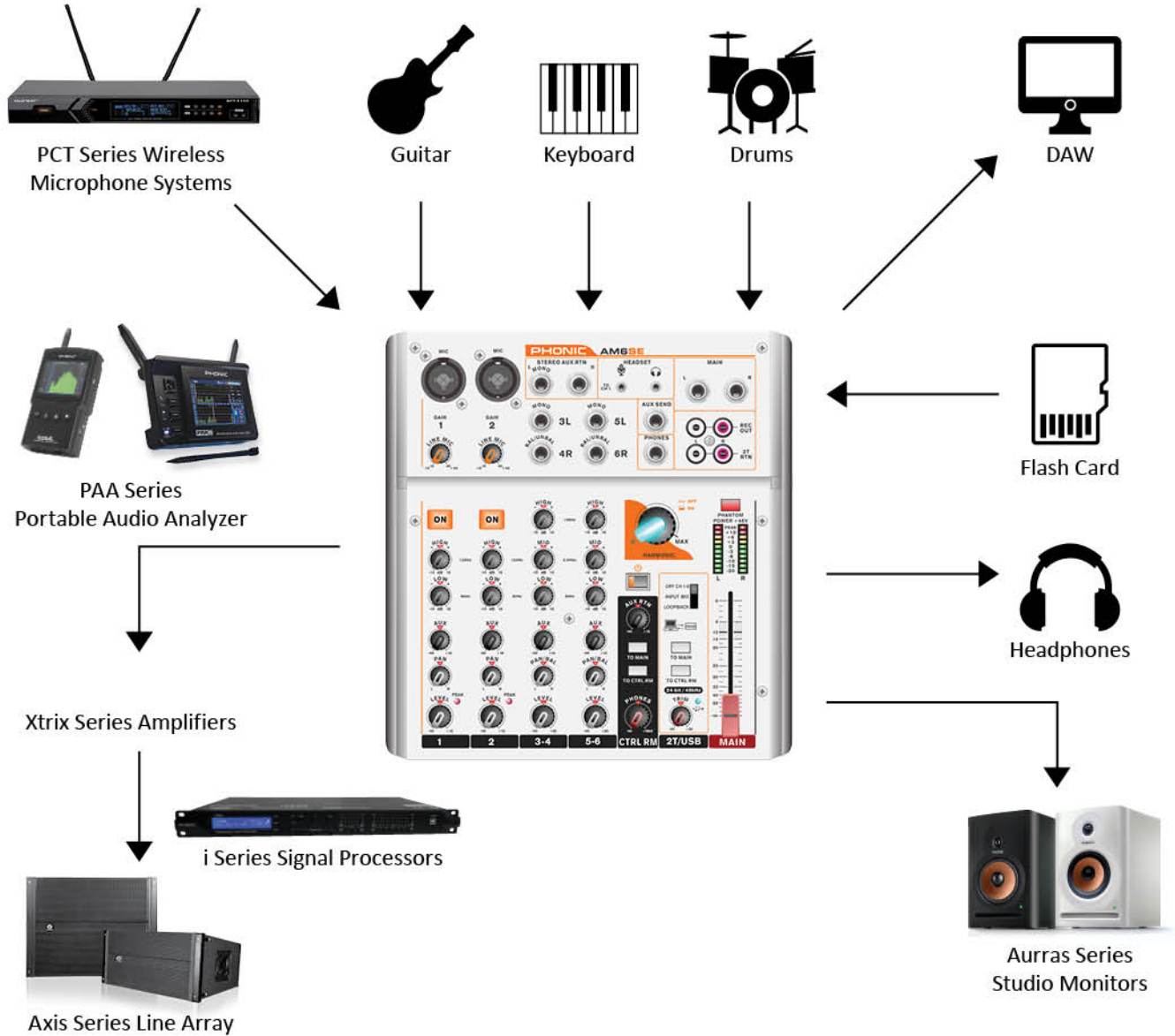
- Six Mic/Line "Combo" inputs with inserts, compressors, 3-band EQ and phantom power
- Two stereo channels with XLR inputs, plus two stereo line inputs
- Stereo USB audio interface for PC and Mac computers (24-bit, 48 KHz)
- Audio Loopback allows you record computer audio and microphone input simultaneously
- Dry signal, Input mix, and Loopback slide switch (sent to computer)
- Harmonic Enhancement - gives your mix a vintage feel and vibe
- 3-band, swept-mid EQ plus low cut on each mono channel, 4-band on stereo channels
- 3 AUX sends, one with channel Pre/Post switches
- Solo feature on each input and output
- 32/40-bit digital effect processor with 16 effect programs and one main parameter control
- 2 true subgroups with main L and R routing switches
- 2 stereo AUX returns with effect to monitor level control
- Solo feature on each input and output
- XLR connectors available on main L / R output
- Built-in switching power supply with universal connector, 100-240VAC, 50/60Hz
- Optional rack mounting kit (sold separately)



Optional Accessories AM12SE/14SE

- ER-12SE AM12GE Ear Rack (L + R)
- ER-14SE AM14GE Ear Rack (L + R)

Live Concert Example



Live Streaming Example





AM220

2-Mic, 2-Stereo Line Input Compact Mixer

- Two balanced mic/line and two stereo inputs with 3-band EQ
- 1 stereo AUX return
- Post-fader AUX send on every input
- Peak and VU metering
- 2T RTN assignable individually to Main or Control Room
- Playback of digital audio files from USB media ("P" model only, as pictured)
- 60mm master fader
- 190 x 56 x 233 mm (7.48" x 2.2" x 9.17") / 1.5 kg (3.3 lbs)



AM220P

2-Mic, 2-Stereo Line Input Compact Mixer with USB Playback

- Two balanced mic/line and two stereo inputs with 3-band EQ
- 1 stereo AUX return
- Post-fader AUX send on every input
- Peak and VU metering
- 2T RTN assignable individually to Main or Control Room
- Playback of digital audio files from USB media ("P" model only, as pictured)
- 60mm master fader
- 190 x 56 x 233 mm (7.48" x 2.2" x 9.17") / 1.5 kg (3.3 lbs)



AM440

4-Mic, 4-Stereo Line Input Compact Mixer

- Four balanced mic/line and four stereo input channels
- 32/40-bit DFX processor with 16 programs and main parameter control ("D" model)
- AUX send on each channel
- 75Hz low-cut filter on mono channel
- 3-band EQ on mono channels
- Control Room/Phones source matrix for maximum monitor flexibility
- EFX/AUX send cue for monitoring individual channel
- 242 x 56 x 228 mm (9.5" x 2.2" x 9") / 1.63 kg 3.6 lbs)



AM440D/440DP

4-Mic, 4-Stereo Line Input Compact Mixer with DFX & USB Playback

- Four balanced mic/line and four stereo input channels
- 32/40-bit DFX processor with 16 programs and main parameter control ("D" model)
- DFX & Playback of digital audio files from USB media ("DP" model only, as pictured)
- AUX send on each channel
- 75Hz low-cut filter on mono channel
- 3-band EQ on mono channels
- Control Room/Phones source matrix for maximum monitor flexibility
- EFX/AUX send cue for monitoring individual channel
- 242 x 56 x 228 mm (9.5" x 2.2" x 9") / 1.63 kg 3.6 lbs)



AM642D USB

6-Mic, 4-Stereo Line Input 2-Group Mixer with GEQ & DFX

- Six mic/line channels with inserts and phantom power
- Four stereo channels with 4-band EQ
- Stereo USB audio interface for PC and Mac computers
- 3-band EQ w/swept mid-range on mono channels
- Stereo 9-band graphic EQ for Main or AUX
- 2 stereo AUX returns with effect to monitor level control
- 407 x 103.5 x 357 mm (16" x 4.12" x 14") / 4.8 kg (10.6 lbs)



AM844D USB

10-Mic, 8-Mono, 4-Stereo Line 4-Group Mixer with DFX & USB Interface

- Eight mic/line channels with inserts and phantom power
- Four stereo line channels with 4-band EQ
- 10 mic preamps in total across 8 mono and 2 stereo channels
- One-knob compressor on mono input channels
- Direct outputs for multi-track recording
- 4 AUX sends, aux 1 & 2 with Pre/Post selector
- 4 stereo AUX returns with solo switch selector
- Stereo USB audio interface for PC and Mac computers
- CTRL RM/Phones with multi input source matrix selector
- 418 x 150 x 420 mm (16.5" x 5.9" x 16.5") / 5.9 kg (13 lbs)



KRATOS 12i

Description

The KRATOS 12i Digital Mixer, despite its compact size, produces pristine sound. State-of-the-art analog/digital circuit design allows for low noise and high dynamic range. When you need great sound in a compact format, look no further than the KRATOS 12i. It's perfect for musicians, venues, auditoriums, classrooms, and anywhere else.



Features

- 2 in, 2 out USB Audio Interface (24-bit/48kHz)
- 100mm motorized faders
- 12 inputs (8 XLR/TRS, Stereo Line Inputs with TRS jack sockets, Stereo Bluetooth Playback, USB Playback/Recording)
- 4 AUX outputs for connecting a monitor speaker or in-ear monitoring
- XLR main outputs and Headphone
- Adaptive Automatic Mixing
- 4-band Parametric EQ, High/Low pass filter, Noise gate, Compressor, Polarity Reversal, Feedback Suppressor, and 48V Phantom Power for condenser mics
- EFX engine: Echo, Reverb, Echo + Reverb, Flanger, and Stereo Delay
- Scene Recall/Save
- Android Tablet/Smartphone Remote App via Wi-Fi USB dongle
- RS-485 Data Connector



Compact and Mighty!



Technical Specifications

Display	4.3" Color TFT Capacitive LCD
Faders	100m motorized faders (Accuracy = 1024 position)
Audio inputs	12 inputs: 8 channels Mic/Line (XLR/TRS balanced), stereo line inputs (TRS), USB dongle (USB and Bluetooth playback), and 2 in/2 out USB compliant audio interface
Audio outputs	10 outputs: 4 Auxiliary outputs AUX1 to AUX4 (XLR) Main L/R outputs (XLR) 2 in, 2 out USB Audio Interface (24-bit/48kHz) Headphone (1/4" TRS stereo and 16Ω minimum impedance)
Input channel processing	Analog potentiometer (Gain), Polarity Reversal, 48V Phantom Power, 4-band Parametric EQ, High/Low-pass filter, noise gate, and compressor
Recording	USB flash drive, and 2 in/2 out USB Compliant Audio Interface (24-bit/48kHz)
USB playback format	WAV, MP3, and FLAC
USB audio Interface	USB Compliant, no driver needed, sampling rate up to 24-bit/48kHz
EFX	Echo, Reverb, Echo + Reverb, Flanger, and Stereo Delay
Scene mode	Save/Recall/Name/Export/Import of scenes can be done
Feedback suppression	Dynamic and notch filter for feedback suppression
Automatic mixing	Intelligent adaptive algorithm
Remote control	Android control app from Google Store
Wi-Fi connection	Wi-Fi USB dongle
Bluetooth audio playback	Bluetooth USB dongle
Sampling Rate	24-bit/48kHz
Latency	Less than 3 milliseconds from input to output
Maximum input level (Mic/Line)	+24dBu
Maximum input level (Stereo In)	+8dBu
Maximum output level	+18dBu
Analog gain (Mic/Line)	+51dB
Analog gain (Stereo In)	+19dB
Equivalent input noise	< -120dBu
S/N	+109dB
Frequency Response	20Hz-20kHz, +/- 0.12dB @ Gain=0 (+4dBu)
THD+N	<0.02% (Typical 0.01%)
Crosstalk	<-105dB
Residual output noise	86dBu A-Weighted
Dynamic Range	+106 dB
Power requirements	100-240 VAC, 50/60 Hz
Dimensions	355 (W) x 403 (D) x 98 mm (H)
Weight	5.1 kg



PowerPod Series

Phonic has been creating high-quality, durable powered mixers that have quietly become the industry standard for live setups. Designed with longevity and affordability in mind, Phonic Powerpods are the simple solution for bars and other small institutions looking for a top-of-the-line audio mixer that even the most novice garage-band can figure out. The Powerpods' success lies not only in their features and affordability, but in their earnest reputation as a quality console. Wipe the beer stains off that dusty unit down at your local dive bar, and you're likely to see the Phonic name hidden underneath. Generally, loudspeaker manufacturers recommend an amplifier with power output equal to the speaker's Program (Music) Power rating or two times the RMS Power rating. The Phonic amplifiers deliver just the right amount of power to the most popular speakers available on the market.

USB Recorder

Taking recording of live shows out of the hands of the bootlegger with the "R" series of Powerpod powered mixers. Powerpod mixers are now available with a USB recording and playback module built directly into the console. Save MP3 recordings directly to any formatted USB flash drive, or play back MP3 and WMA files from USB flash drives. The playback feature is ideal for incorporating digital audio into rehearsals and shows.





PowerPod 415RW

150W 4 Channel Powered Mixer with USB Recorder & Bluetooth

- Built-in 150 Watt / 4 ohm power amplifier
- 4 mic/line input channels with 2-band EQs
- USB recording module for recording/playback of audio files
- Bluetooth audio streaming from tablets and smartphones
- Variable digital delay with time and repeat parameters
- Additional 1/4" TRS send/return jack for main insert
- 440 x 145 x 215 mm (17.3" x 5.7" x 8.5") / 7.5 kg (16.5 lbs)



PowerPod 630RW

300W 6 Channel Powered Mixer with USB Recorder & Bluetooth

- 2 x 150W / 4 ohm dual power amplifiers for Main or Main/Monitor (Bridge mono, 300W / 8 ohm)
- 4 mono, 2 stereo mic/line input channels with 2-band EQs
- 2 Super Hi-Z inputs for direct instrument connection
- USB recording module for recording/playback of audio files
- Bluetooth audio streaming from tablets and smartphones
- 32/40-bit digital effect processor with 16 preset programs each with its own adjustable parameter
- 7-band master graphic equalizer
- Pad buttons on channels 1 to 4
- Global +48V phantom power for mic inputs
- 1/4" AUX input connector for additional inputs
- Monitor and effect sends on each input channel
- Built-in limiters protect both your speakers and your Powerpod
- 440 x 265 x 275 mm (17.3" x 10.4" x 10.8") / 13.06 kg (28.8 lbs)



PowerPod 750RW

500W 7 Channel Powered Mixer with USB Recorder & Bluetooth

- 2 x 250W / 4 ohm dual power amplifiers for Main or Main/Monitor (Bridge mono, 500W / 8 ohm)
- 4 mono, 3 stereo mic/line input channels with 3-band EQs
- 2 super Hi-Z inputs optimized for direct instrument input
- USB recording module for recording/playback of audio files
- Bluetooth audio streaming from tablets and smartphones
- 32/40-bit digital effect processor with 16 preset programs each with its own adjustable parameter
- Dual 7-band graphic equalizers with In/Out switches for Main L/R or Main/Monitor
- Pad control on channels 1 to 4
- Rumble filters for mic inputs
- Global +48V phantom power for mic inputs
- 1/4" AUX input connector for additional inputs
- Monitor and effect sends on each input channel
- Built-in limiters for added protection
- Mains power switchable between 115 VAC and 230 VAC
- 471 x 265 x 275 mm (18.5" x 10.4" x 10.8") / 15.5 kg (34.1 lbs)



PowerPod 1062R

600 Watt 10 Channel Powered Mixer with DFX & USB Recorder

- 2 x 300W / 4 ohms stereo power amplifier for Main L/R or Mono/Monitor
- 6 mono, 3 stereo mic/line input channels with 3-band EQs
- 2 super Hi-Z inputs optimized for direct instrument inputs
- USB recording module for recording/playback of audio files
- Professional Speakon and 1/4" jacks available on speaker output
- 32/40-bit DFX processor with 16 programs plus parameter control
- Dual multi-band GEQ with in/out and assign switches
- Stereo line auxiliary input channel
- Pad control on channels 1-6
- Monitor and effect sends on each input channel
- Rumble filter and phantom power for mic inputs
- 2 built-in dynamic limiters for speaker protection
- Rec out with trim control for record level matching
- Mains power switchable between 115 VAC and 230 VAC
- 471 x 285 x 275 mm (18.5" x 11.2" x 10.8") / 21.5 kg (47.4 lbs)



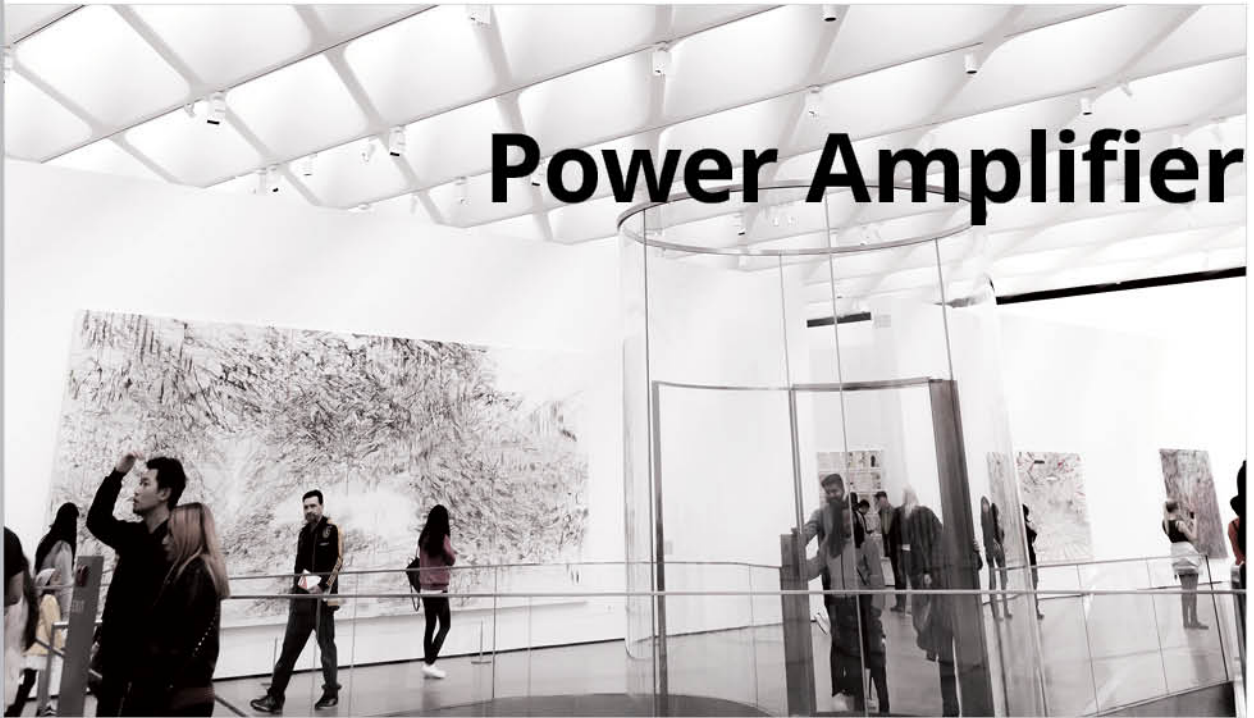
PowerPod 1082R

800 Watt 10 Channel Powered Mixer with DFX & USB Recorder

- 2 x 400W / 4 ohms stereo power amplifier for Main L/R or Mono/Monitor
- USB recording module for recording/playback of audio files
- 6 mono, 3 stereo mic/line input channels with 3-band EQs
- 2 super Hi-Z inputs optimized for direct instrument inputs
- Professional Speakon and 1/4" jacks available on speaker output
- 32/40-bit DFX processor with 16 programs plus parameter control
- Dual multi-band GEQ with in/out and assign switches
- Stereo line auxiliary input channel
- Pad control on channels 1-6
- Monitor and effect sends on each input channel
- Rumble filter and phantom power for mic inputs
- 2 built-in dynamic limiters for speaker protection
- Rec out with trim control for record level matching
- Mains power switchable between 115 VAC and 230 VAC
- 471 x 285 x 275 mm (18.5" x 11.2" x 10.8") / 18.14 kg (40 lbs)



Power Amplifier



We wouldn't call this series MAX if we didn't mean it. Maximum power output, maximum audio quality, and maximum reliability are but 3 of the premiere features of Phonic MAX amplifiers. The tank-like housing of the MAX protects the massive power contained within. Providing XLR and 1/4" inputs, and professional speakon speaker jacks and traditional binding posts for outputs, the Phonic MAX assures versatile operation. Combine with a pair of Phonic passive speakers, and incredible power is but an "on" switch away.

MAX Series



MAX1000

600 Watt Power Amplifier

- Output power: 300W @ 4 ohms per channel, 200W @ 8 ohms per channel
- High-current toroidal transformers for greater power and low noise
- Balanced 1/4" TRS and XLR inputs for maximum flexibility
- Grounding / Floating switch to avoid grounding loop
- Binding post and Speakon-type outputs
- Front mounted gain controls for easy access
- Signal and Peak LED indicators to monitor performance
- Short circuit, thermal, subsonic, RF protection, output DC offset
- Power on/off muting
- 482 x 88 x 415 mm (19" x 3.46" x 15.9") / 10.16 kg (22.4 lbs)



MAX1500 **PLUS** / 2500 **PLUS**

900 / 1500 Watt Power Amplifier

- MAX 1500 Plus Output power: 450W @ 4 ohms per channel, 280W @ 8 ohms per channel
- MAX 2500 Plus Output power: 750W @ 4 ohms per channel, 500W @ 8 ohms per channel
- High continuous current output from robust toroidal transformer
- Switchable input peak limiter and selectable high pass filter (30Hz, 50Hz) to reduce distortion and protect speakers
- Bridge mono and parallel mode LEDs
- Fast Recovery design for lower distortion if clipping occurs
- Very rugged housing
- Active balanced inputs for low noise
- Signal level at -40, -20, -10, protect and clip LED indicators to monitor performance
- Ground Lift switch to prevent humming
- Selectable stereo, parallel & bridge mono amp modes
- Two ventilation variable speed fans
- Speakon-type connectors and 5-way binding posts speaker outputs
- XLR & 1/4" TRS connectors for maximum input flexibility
- 482 x 88 x 415 mm (19" x 3.46" x 15.9") / 11.15 kg (24.6 lbs) / 13.24 kg (29.2 lbs)

XP Series



XP3000

2800 Watt Power Amplifier

- Output Power: 1400W @ 2Ω / channel, 1100W @ 4Ω / channel



XP5000

5000 Watt Power Amplifier

- Output Power: 2500W @ 2Ω / channel, 1800W @ 4Ω / channel
- Independent user-defeatable clip limiters reduce distortion
- XLR, 1/4" and barrier strip inputs all included

The Phonic XP series of power amps has long been Phonic's flagship amplifier series, and with good reason. With models ranging from 1920 to 6000 Watts, the XP amplifiers supply clean, beefy power into low loads. Advanced onboard protection-circuitry shields the unit from external interferences, and the quick recovery circuitry and variable speed fans ensure optimal performance. When flawless execution is a requirement, not a desire, the XP series should be considered essential to your live setup. If it's your time to shine, make sure your gear has got your back.

ICON Series



ICON300

300 Watt Contractor Amplifier

- Output power: 2 x 150W at 4 ohms, 70V or 100V
- XLR and barrier strip input connectors
- Output via covered barrier strips
- Automatic dual-speed, high-efficiency cooling fan
- Full short-circuit, temperature and DC offset protection
- Toroidal output transformers provide full electrical isolation and meet worldwide safety standards



ICON700

700 Watt Contractor Amplifier

- Output power: 2 x 350W at 4 ohms, 70V or 100V
- XLR and barrier strip input connectors
- Output via covered barrier strips
- Automatic dual-speed, high-efficiency cooling fan
- Full short-circuit, temperature and DC offset protection
- Toroidal output transformers provide full electrical isolation and meet worldwide safety standards

ICON series power amplifiers are designed with the needs of sound contractors in mind. The binding post outputs allow for connection to standard low impedance speakers. Barrier strip outputs enable 25V, 70V and 100V Line operation. Each amplifier channel has a separate toroidal secondary transformer that provides full electrical isolation and ensures maximum audio separation. Features like power up muting, full short-circuit temperature, DC offset protection and a built-in 45 Hz subsonic filter, combine to make the ICON series an attractive yet efficient solution for any audio installation.

The Phonic GA mixer/amplifiers are perfect for the most of of installed sound applications, such as paging, music distribution, and on-hold messaging. The GA335 (35W), GA460 (60W), GA5100 (100W), GA6120 (120W), and GA6240 (240W) models are all built into compact, space-saving chassis designs. 3-pin euro-block connectors, unbalanced RCA inputs, XLR and 1/4" phone jacks for microphones, telephone paging inputs, program and music sources are all available for input. Installed sound would be ideal for schools, office suites, factories, train stations, gas stations, houses of worship, convenience stores, and retail outlets.



- 3 input channels, each with volume control
- 35 or 60 Watt amplifier output channel
- Bass and treble controls on master output
- Balanced 3-pin Euroblock mic/line inputs
- Telephone output for 'music on hold' application
- Two or three stereo RCA music inputs
- Screw-terminal speaker outputs
- Priority muting by VOX or external switch

GA335

3-Channel Commercial 35 Watt Mixer/Amplifier

Specification	Description
35 Watt Amplifier	Screw terminal outputs can be wired for 8Ω or 70V/100V distributed line connections
3 Input Channels	Euroblock mic/line and two summed stereo RCA inputs
MOH Output	Independent telephone (Music-on-hold) euroblock connectors
Preamp Output	3-pin euroblock connector for balanced line-level output to external devices
Tone Control	Treble and bass controls located below the Master control on front panel



- 4 input channels, each with volume control
- 35 or 60 Watt amplifier output channel
- Bass and treble controls on master output
- Balanced 3-pin Euroblock mic/line inputs
- Telephone output for 'music on hold' application
- Two or three stereo RCA music inputs
- Screw-terminal speaker outputs
- Priority muting by VOX or external switch

GA460

4-Channel Commercial 60 Watt Mixer/Amplifier

Specification	Description
60 Watt Amplifier	Screw terminal outputs can be wired for 8Ω or 70V/100V distributed line connections
4 Input Channels	Euroblock mic/line and three summed stereo RCA inputs
MOH Output	Independent telephone (Music-on-hold) euroblock connectors
Preamp Output	3-pin euroblock connector for balanced line-level output to external devices
Tone Control	Treble and bass controls located below the Master control on front panel

GA335BH & GA460BH New Version with Additional Features

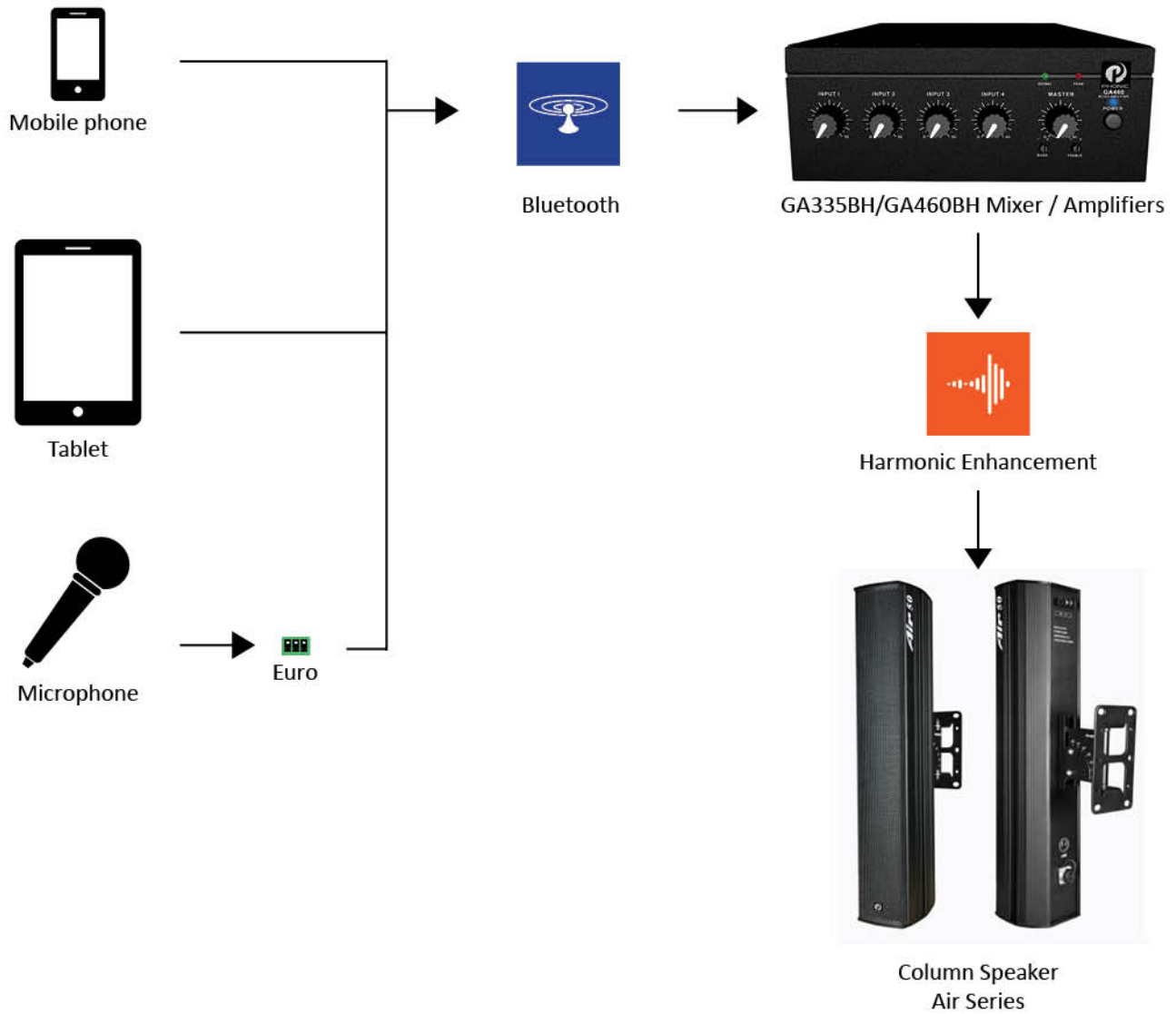


Harmonic Enhancement
Bluetooth

- **Harmonic Enhancement** makes sound richer and more intriguing by adding depth, presence, and warmth, while keeping the highest sound clarity
- **Bluetooth connectivity** for high-quality wireless integration

System Example

Bar & Restaurant





- 100 Watt (RMS) of power at 4 ohms, 100V
- 3 microphone, 2 line input channels
- Microphone input via combo jacks
- Line 1 input offers stereo RCA and 1/4" TRS
- Line 2 input offers stereo RCA and mini-stereo
- Built-in echo effect with volume control
- Screw terminal speaker output connectors
- System EQ with treble and bass controls
- 6-segment LED VU meter on output
- Alert chimes and 'announce' tones built-in
- Individual zone output select buttons
- Playback of MP3 or WMA audio files directly from USB flash drives
- Stereo RCA tape in / line out available for consumer-level devices
- 1/4" TRS link input and output connectors
- 24V battery connector available
- Removable rack ears included
- 2 standard rack units high

GA5100

3-Zone 100 Watt Mixer/Amplifier with Battery Connection

Specification	Description
100 Watt Amplifier	Screw terminal outputs can be wired for 4Ω or 100V distributed line connections in two zones
5 Input Channels	Three combo (XLR / 1/4") jacks, two summed stereo RCA channels, 1/4" phone jack and mini-stereo
Link In & Out	Line-level 1/4" phone jack connectors for linking devices with combined/external signal selection
Tape In & Out	Front-panel stereo RCA connectors for connecting to external playback and recording devices
USB Playback	USB player supports playback of digital audio files in MP3 and WMA formats
Tones	Alert chimes and announcement tones available
DC Power	+24V DC battery connectivity for power in the case of power-outages



GA6120

- 6 input channels, each with volume control
- 120 or 120 Watt amplifier output through screw terminals
- 4 mic/line inputs channels with independent phantom power and trim
- 2 stereo (summed mono) AUX inputs
- Bass and treble controls available on master output
- Signal and peak indicators for monitoring output signal
- Remote VCA or VOX mute capabilities
- VCA assignable to Channel 6 (for BGM) or Master mix
- Zone 2 MOH output with selectable input assignment

GA6240

- Single 240 Watt amplifier output channel

GA6120

6-Channel Commercial 120 Watt Mixer/Amplifier

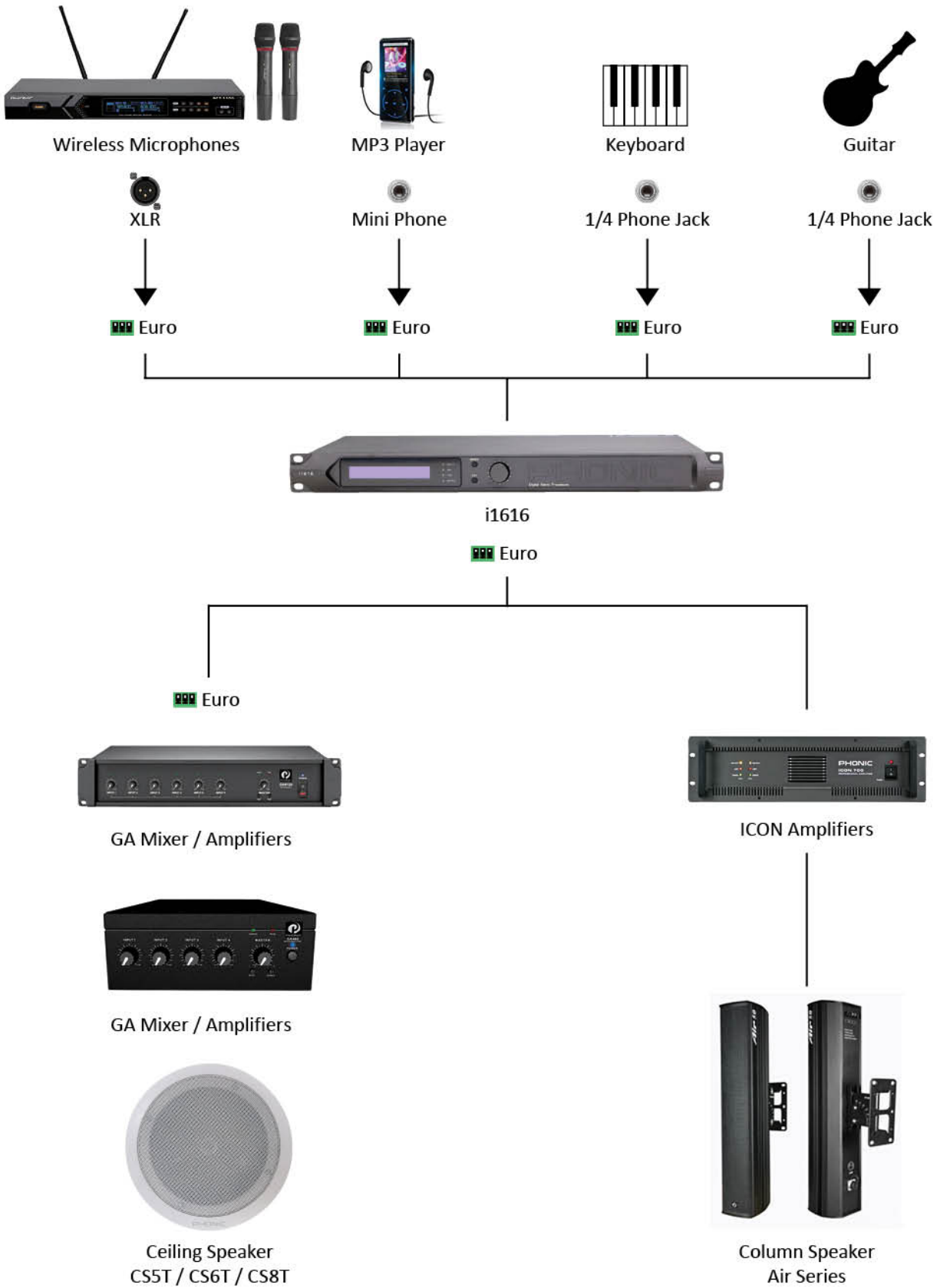
GA6240

6-Channel Commercial 240 Watt Mixer/Amplifier

Specification	Description
Amplifier Power 120 Watt (GA6120) 240 Watt (GA6240)	Screw terminal outputs can be wired for 4Ω or 25V/70V/100V distributed line connections
6 Input Channels	Four euroblock input connectors and two summed stereo RCA channels
Remote	Euroblock connectors for both muting and VCA operation
Phantom Power	Individual phantom power for channels 1 through 4 activated through DIP switches
Zone 2/MOH	Euroblock connectors with selectable input assignment
Tone Control	Treble and bass controls located below the Master control on front panel

System Example

Education & Hospitality





Xtrix Series

1U
Touring

2Ω Lo-Z
100/70V Hi-Z

Active-PFC
90v-260v

DSP

FIR
MAX 512TAPS

Description

Phonic Xtrix series digital amplifiers offer up to four fully processable channels. Channel mixing and routing is greatly simplified by the built-in low latency DSP, which allows for the most control over sound shaping and speaker management. This makes it great for medium to large-sized clubs, churches, auditoriums, and more.

Features

- Rated Power per channel at 2Ω: 1870 Watts (Xtrix 2065)
- Rated Power per channel at 2Ω: 3570 Watts (Xtrix 2150)
- Revolutionary Class D topology
- Speakon output connectors
- Lightweight design
- Top-grade DSP offering onboard extensive speaker management tools
- Optional Dante networking module allows for simple signal routing from any node in the network to Xtrix
- Rated Power per channel at 2Ω: 1300 Watts (Xtrix 4045)
- Rated Power per channel at 2Ω: 2890 Watts (Xtrix 4100)
- Variable-speed cooling fans for smooth operation
- Protection circuitry prevents damage from short circuit, thermal, sensitivity, overload protection, output DC offset
- Active PFC 90 - 260 V @ 50/60Hz
- 1RU-height



Xtrix 4100

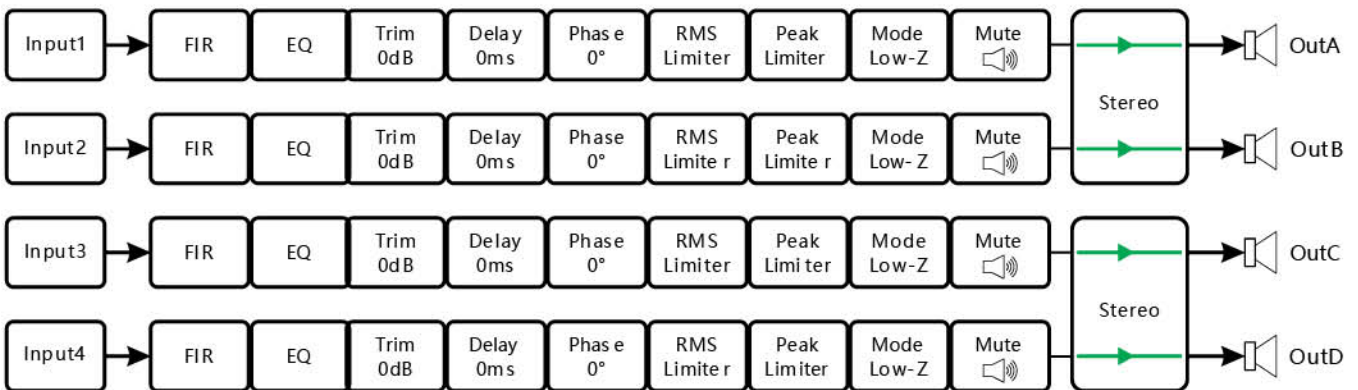
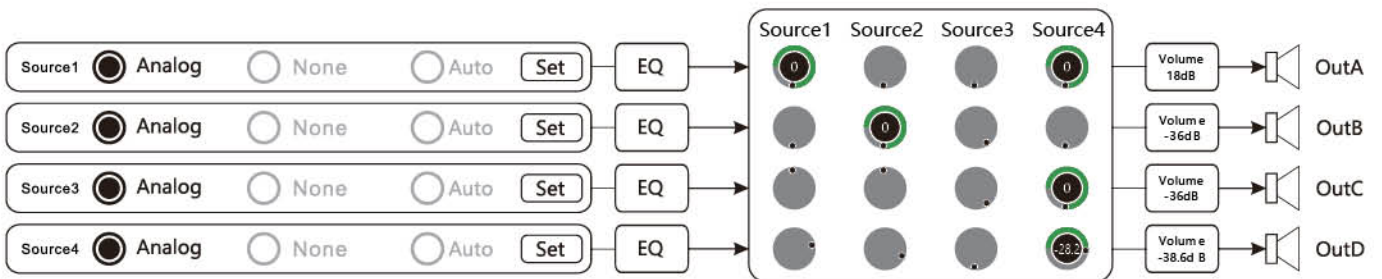
483 mm / 19"



45 mm / 1.7"



DSP SIGNAL PROCESSING FLOW



		Xtrix 2065	Xtrix 2150	Xtrix 4045	Xtrix 4100
Output power (1KHz,THD<1%, all channel drive)	8 Ω stereo	650W*2	1500W*2	450W*4	1000W*4
	4 Ω stereo	1100W*2	2550W*2	765W*4	1700W*4
	2 Ω stereo	1870W*2	3570W*2	1300W*4	2890W*4
	16 Ω Bridge	1300W	3000W	900W*2	2000W*2
	8 Ω Bridge	2220W	5100W	1530W*2	3400W*2
	4 Ω Bridge	3740W	7140W	2600W*2	5780W*2
	100V	-	2500W*2	-	-
	70V	1100W*2	2400W*2	-	1700W*4
Amplifier Protection	DC protection	√	√	√	√
	Short circuit protection	√	√	√	√
	Sensitivity overheat management system	√	√	√	√
	Overheating protection	√	√	√	√
	over load protection	√	√	√	√
Frequency Response (1W, 8 Ω, 20Hz, 20kHz)		(±0.5dB)	(±0.5dB)	(±0.5dB)	(±0.5dB)
Connectors	Input/Link	XLR female			
	Output	SPEAKON	SPEAKON	SPEAKON	SPEAKON
Input impedance	Balanced	20KΩ	20KΩ	20KΩ	20KΩ
	Unbalanced	10KΩ	10KΩ	10KΩ	10KΩ
Signal-to-Noise Ratio (A weight, rated power 8 Ω)		≥105 dB	≥105 dB	≥105 dB	≥105 dB
Input acceptance		+21 dBu	+21 dBu	+21 dBu	+21 dBu
Default Gain		19 dB	23 dB	18 dB	21 dB
Gain		19 dB - 37 dB	23 dB - 41 dB	18 dB - 36 dB	21 dB - 39 dB
Crosstalk (1KHz)		≥90 dB	≥90 dB	≥90 dB	≥90 dB
Damping factor (8 Ω, 1KHz)		≥1000	≥1000	≥1000	≥1000
Total Harmonic Distortion (20Hz, 20kHz; 10% output)		≤0.05%	≤0.05%	≤0.05%	≤0.05%
Phase Response (1W, 8 Ω, 20Hz, 20kHz)		≤±1.5°	≤±1.5°	≤±1.5°	≤±1.5°
Output Circuit Topology		Class-D			
Maximum output voltage (RMS,THD 1%, 1KHz)		72.1 V	109.5 V	60 V	89.4 V
Installation space		1U			
Cooling		The fully intelligent system automatically adjusts to temperature changes			
Dimensions (WxHxD)		483×45×370mm			
Operating voltage		90 - 260 V @ 50/60Hz			
Weight		9.0 kg	9.0 kg	9.0 kg	9.0 kg



i Series

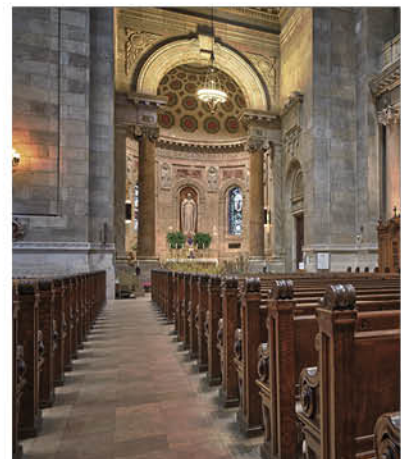
Description

You can instantly access and modify the tour & FOH sound parameters through the front panel buttons. The audio signal can also be switched freely between input and output channels through software. The flexibility of PiWare software ensures the simplicity of system operation.

Each Input channel is equipped with compressor and limiter, FIR filter, 15-band parametric equalizer, 28-band graphic equalizer, Dynamic EQ and up to 1000 ms delay, these are all standard configuration for high-performance processing. The output routing can be configured as a hybrid matrix mode, free routing or several pre-configured routing options. Flexible channel connections make the configuration of ordinary speaker systems quick and convenient. A wide range of filter types specify 10 parametric equalizers, all-pass filters, and 6 FIR filters, with a maximum delay of 1000 ms. The limiter uses the predictive offset limiter (PXL) algorithm to provide precise speaker power control with the lowest distortion.

Features

- 96kHz/24bit sampling rate
- Input with 15 segment PEQ, output with 10 segment PEQ, high and low pass filter.
- All-pass filter and support Dynamic EQ
- Ethernet remote control via PiWare driver-free application
- Complete front panel user interface provides simple and intuitive
- USB drive-free automatic connection software, support RS232 central control, support TCP/IP wired and wireless control.
- Support mobile APP wireless control.
- Support multi-machine networking and joint debugging, remote monitoring, easy for system integration





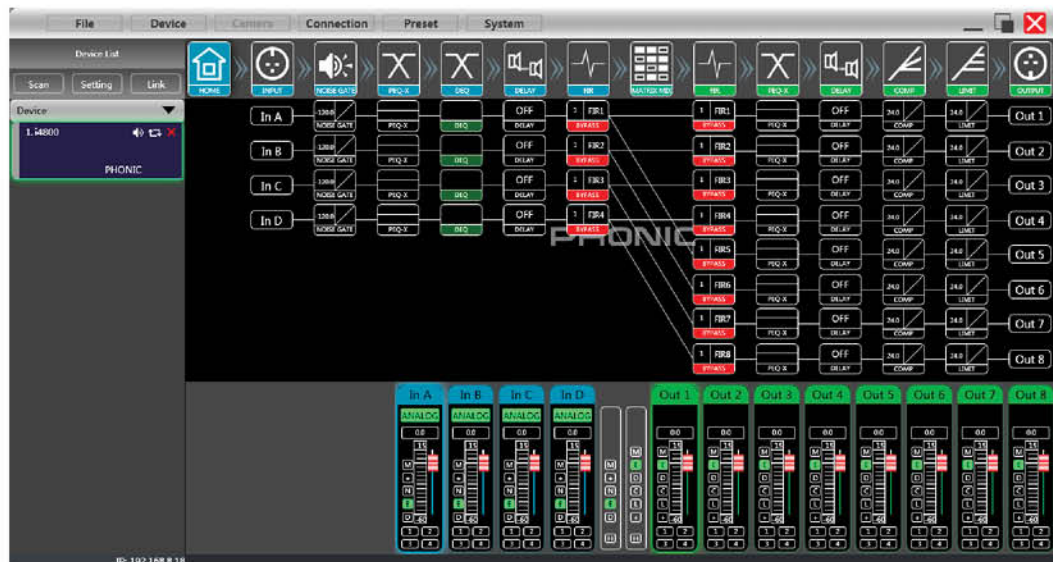
i3600
3 in 6 out Audio Processor



i4800
4 in 8 out Audio Processor



Main function interface



DIGITAL MATRIX PROCESSORS



Description

PHONIC's i series of digital matrix processors provide high-quality audio performance even under the most demanding conditions. The entire series was designed with contractors in mind, from the versatile phoenix inputs to the short learning curve of the PHONIC TCP/IP control software. Each system includes a variety of signal processors built right into the internal DSP, such as AFC active feedback suppression, ANC adaptive active noise cancellation, and AEC adaptive acoustic echo cancellation, as well as powerful multi-band graphic and parametric EQs, versatile variable gain amplifiers, and nine adjustable mic input sensitivity levels, among many other features. PHONIC engineers created powerful algorithms that consistently produce high-quality signal processing, backed by an amazing 32-bit floating/fixed point processor, making any of the DMP series invaluable to any installation.

Features

- i8800 : 8 analog audio inputs and 8 analog audio outputs(Line/Mic inputs)
- i1616 : 16 analog audio inputs and 16 analog audio outputs(Line/Mic inputs)
- Optional Dante 4 x 4 network modules are available
- Each microphone input has nine adjustable sensitivity levels
- 32-bit DSP
- 24-bit 48kHz AD/DA conversion
- System latency less than 1ms
- Auto mix function
- AFC active feedback suppression
- AFC adaptive noise cancellation
- AEC adaptive acoustic echo cancellation
- RS232/485 interface
- GPIO extended control interface
- Support TCP/IP multiple machine centralized management and debugging, configuration

i Series



i8800

8 in 8 out Audio Processor



i1616

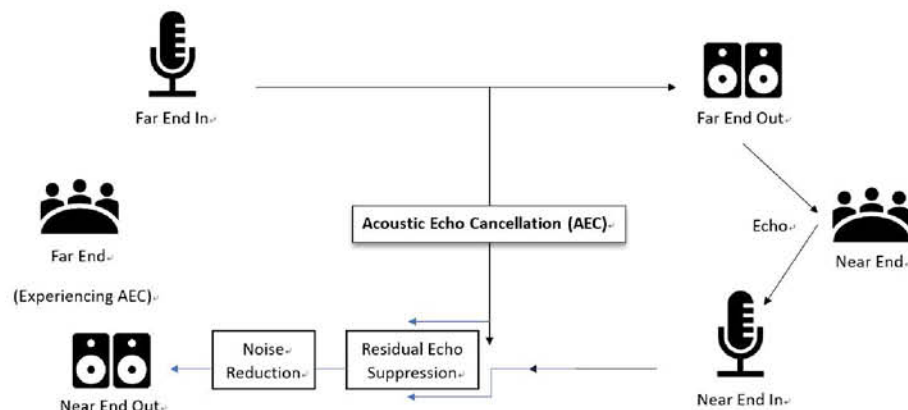
16 in 16 out Audio Processor

- 48kHz/24bit sampling rate
- Input with 31 segment PEQ, output with 10 segment PEQ, high and low pass filter
- Active feedback suppression
- Adaptive noise cancellation
- Auto Mixing
- USB drive-free automatic connection software with RS232/485 central control support
- TCP/IP wired and wireless control is supported
- Support for mobile APP wireless control

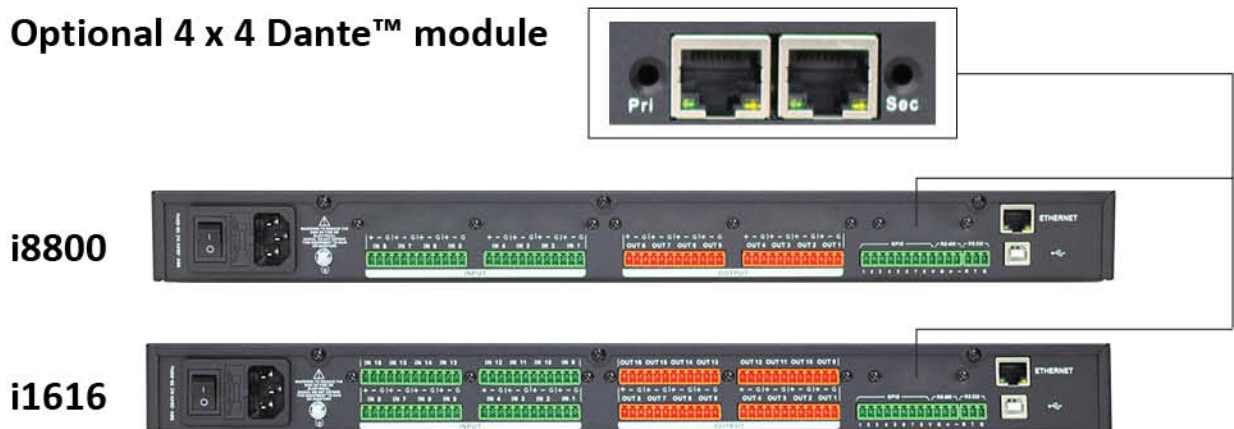
Main function interface



AEC(Acoustic echo control)



Optional 4 x 4 Dante™ module





CS Series

The CS series are high-fidelity in-ceiling speakers that offer versatile operation in commercial and private application. With driver sizes ranging from 5" to 8" - with coaxially mounted tweeters in most cases - and incredibly diverse power handling and sound pressure levels, the CS series consists of four premium, lightweight speakers that can be easily installed in even the most demanding of venues. With 20 to 40 Watt power handling capacity, these discrete speakers are ideal for moderate to high ceiling installations such as those found in schools, gymnasiums, meeting rooms, shopping centers and retail outlets. The versatile operating modes (8 ohms, 70V and 100V) make them ideal for almost any installation.



CS5T
5" Coaxial Ceiling Speaker



CS6T
6" Coaxial Ceiling Speaker



CS8T
8" Coaxial Ceiling Speaker

Features

- Versatile operating modes including distributed line and Low-impedance
- Tweeters coaxially mounted on woofers
- Sturdy iron back-can and grille
- Discrete, low-profile design
- Wide frequency responses
- Built-in transformer
- Ideal for commercial installations
- Off-white finish

	CS5T	CS6T	CS8T
Type	2-way coaxial	2-way coaxial	2-way coaxial
Woofers	5	6	8
Tweeter	1	1	1
Power Taps (100V)	100V: 25W, 20W, 10W, 5W	100V: 30W, 20W, 10W, 5W	100V: 40W, 20W, 10W, 5W
Rated Power (RMS)	20	30	40
Sensitivity (1W, 1m)	90 dB	91 dB	92 dB
Maximum SPL	100 dB	104 dB	107 dB
Dispersion	180°	180°	180°

SAFARI Series



Bluetooth Audio Streaming



Analog Mixer



Rechargeable Battery



Easy Mobility



Description

The Phonic Safari portable audio systems are the ultimate in on-the-go and hit-the-road audio. Offering users a quality woofer and a high performance tweeter matched with a powerful class D power amplifier built-in, the Safari portable audio systems provide reliability and rugged operation at all times. With a host of optional components, including CD player with MP3 playback and wireless microphones, the Safari offers all the trimmings with none of the fat. Whether a professional musician, busker, street performer or businessperson, the Safari self-contained portable audio sets offer professional sound while on the the road.

SAFARI 3000

320 Watt 10" Mobile PA System with 3-Channel Mixer

- 3 channel onboard mixer: Dual combo jack (XLR & 1/4"), mini-stereo and RCA inputs
- Outputs: RCA output and powered output for passive companion speakers
- Dual class D amplifiers offer 160 Watts RMS / 320 Watts continuous
- Proprietary power supply and efficient battery management system
- Bluetooth enabled! Stream music to the Safari from almost any Bluetooth-enabled device
- Supports up to 4 wireless microphones (through optional dual channel wireless systems)

Retractable Handle



Highly Portable



SAFARI 3000P

320 Watt 10" Passive Companion Speaker

- Perfect companion to the Safari 3000 portable audio systems

SAFARI
3000SYS1



SAFARI
3000P





SAFARI 2000SYS2

SAFARI 2000

200 Watt 8" Mobile PA System with 2-Channel Mixer

- 2 channel onboard mixer: combo jack (XLR & ¼"), ¼" TS and RCA inputs
- Outputs: RCA output and powered output for passive companion speakers
- Dual class D amplifiers offer 60 Watts RMS / 120 Watts Peak
- Built-in long-life rechargeable battery
- Bluetooth enabled! Stream music to the Safari from almost any Bluetooth-enabled device
- Supports up to 4 wireless microphones (through optional dual channel wireless systems)



SAFARI 2000P

SAFARI 2000P

200W 8" Passive Companion Speaker

- Perfect companion to the Safari 2000 portable audio systems
- 200W power handling

Shared Features

- 8" woofer and 1" tweeter
- Features RCA output plus a powered output for connection of passive companion speakers
- Stylish molded polymer enclosure and curved design help withstand life on the road
- 418 x 292 x 252 mm (16.5" x 11.5" x 9.9") / 9.5 kg

ALSO AVAILABLE

Wireless Handheld System (WM-1S)

WR-1
Wireless
Receiver



WM-1

Wireless Lavalier System (WL-1S)

WR-1
Wireless
Receiver



WL-1

Wireless Headset System (WH-1S)

WR-1
Wireless
Receiver



WH-1



CD/USB MP3 player & recorder(SAFARI CD/USB)



USB MP3/WMA player & recorder(USBR-1)

Safari 2000SYS1 - is Safari 2000 + WM-1S + CD/USB

Safari 2000SYS2 - is Safari 2000 + WM-1S + USBR-1

Safari 3000SYS1 - is Safari 3000 + WM-1S + CD/USB

Safari 3000SYS2 - is Safari 3000 + WM-1S + USBR-1



SAFARI 2000DC
Dust Cover



SAFARI 3000DC
Dust Cover



Air Series

Description

Phonic introduces the Air Series column speakers are an ideal sound solution for short to medium-range applications with demanding acoustic requirements. This new range of speakers is the result of years of application experience by PHONIC engineers. The speakers are compact and slim to deliver superior sound quality in engineering applications.

Application

- Portable PA system, Club and Theater, Chapel
- Solo musician, Band,DJ, Public building, Theme park
- Shopping mall , Meeting Room, lecture hall



White Color



Air30

160W, 2*3.5" Bass & 3" Paper Cone Drivers Column Speaker

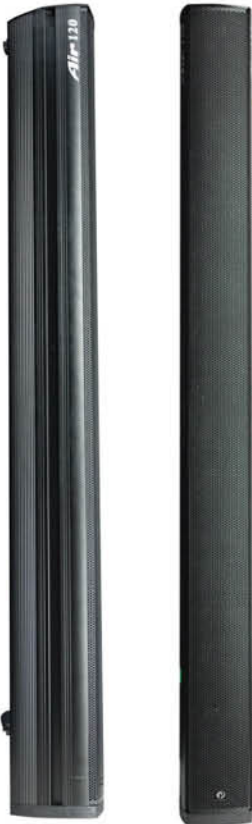
- Power Handling: 160Watt Music / 320 Watt Peak
- Weatherproof paper cone
- Customized strong magnetic and rubber suspension unit for linear movement
- Compact and slim to deliver superior sound
- 1.5mm Aluminum Alloy lightweight and elegant housing
- Wide 100° x 100° dispersion angle
- 2-axis adjustable wall-mounted bracket
- IP65 Square flange panel receptacle and barrier strip terminals
- Dimensions (HxWxD): 330 x 105.6 x 137 mm (13" x 4.2" x 5.4")
- Weight: 2.6 kg (5.7 lbs)



Air50

320W, 4*3.5" Bass & 1" Compression Drivers Column Speaker

- Power Handling: 320Watt Music / 640 Watt Peak
- Weatherproof paper cone
- Customized strong magnetic and rubber suspension unit for linear movement
- Compact and slim to deliver superior sound
- 1.5mm Aluminum Alloy lightweight and elegant housing
- Wide 100° x 100° dispersion angle
- 2-axis adjustable wall-mounted bracket
- IP65 Square flange panel receptacle and barrier strip terminals
- Dimensions (HxWxD): 533 x 105.6 x 137 mm (21" x 4.2" x 5.4")
- Weight: 4.5 kg (9.9 lbs)



Air120

720W, 9*3.5" Bass & 2*1" Compression Drivers Column Speaker

- Power Handling: 720Watt Music / 1440 Watt Peak
- Weatherproof paper cone
- Customized strong magnetic and rubber suspension unit for linear movement
- Compact and slim to deliver superior sound
- 1.5mm Aluminum Alloy lightweight and elegant housing
- Wide 100° x 100° dispersion angle
- 2-axis adjustable wall-mounted bracket
- IP65 Square flange panel receptacle and barrier strip terminals
- Dimensions (HxWxD): 1242 x 105.6 x 137 mm (13" x 4.2" x 5.4")
- Weight: 10.0 kg (22 lbs)



Airsub210

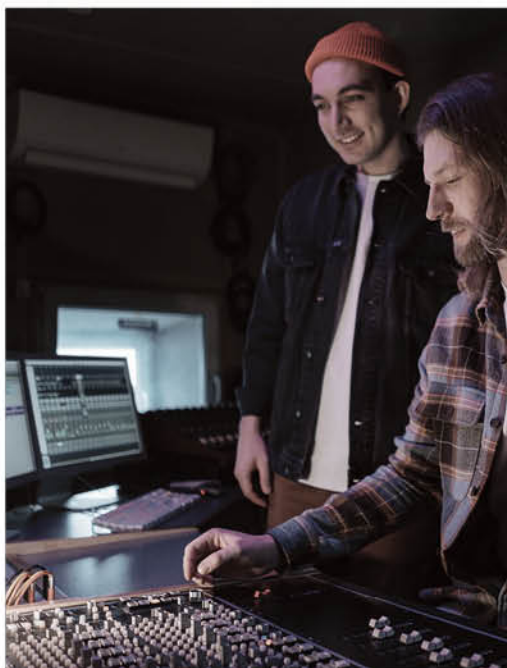
600W, 2*10" Bass Drivers Omni-Directional Passive Subwoofer

- Power Handling: 600 Watt Music / 1200 Watt Peak
- 4 ohm nominal impedance
- Two 10" LF driver for punch low frequency extension
- 15mm multi-layer plywood body
- Powder coated steel with acoustical transparency design
- Dimensions (HxWxD): 718 x 295 x 465 mm (28.3" x 11.6" x 18.3")
- Weight: 22 kg (48.5 lbs)



Black / White
Two color can chose

MONITOR SPEAKER



AURRAS Series

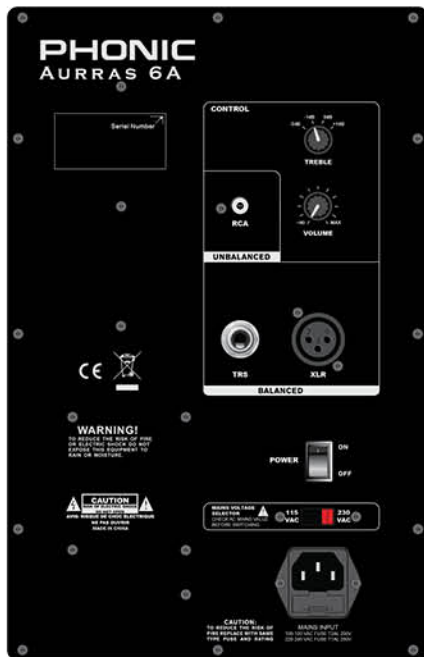
Common Features

- 1 Silk soft dome tweeter
- Custom-designed carbon fibre cone woofer
- Flexible inputs: RCA, Balanced 1/4" TRS, Balanced XLR
- HF contour control
- Available in black and white

AURRAS 6A

75 Watt 6" Two-Way
Active Near Field Studio Monitor

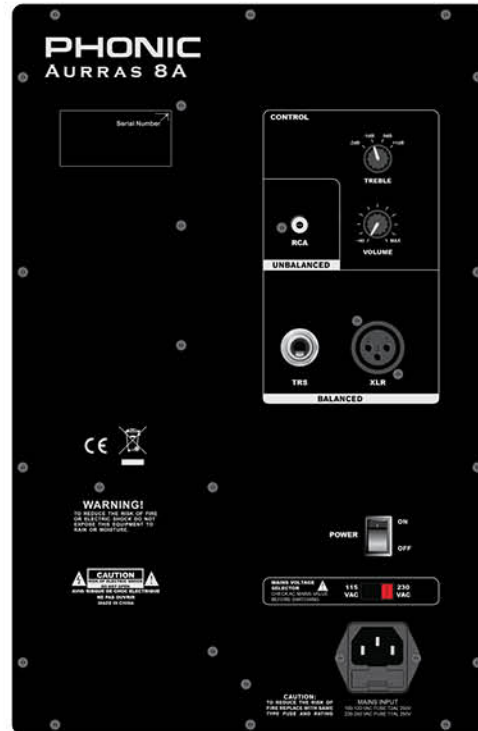
- Maximum SPL of 90 dB
- Dimension (W x H x D): 270 x 230 x 320 mm
- Weight: 9.2 Kg



AURRAS 8A

110 Watt 8" Two-Way
Active Near Field Studio Monitor

- Maximum SPL of 100 dB
- Dimension (W x H x D): 313 x 268 x 383 mm
- Weight: 12.6 Kg



	Aurras 6A	Aurras 8A
Type	Two-Way Active Near Field Studio Monitor	Two-Way Active Near Field Studio Monitor
HF Drivers	1" Silk soft dome	1" Silk soft dome
LF Drivers	6.5" Glass Aramid cone	8" Glass Aramid cone
Frequency Response (+/-3dB)	55 Hz - 20 kHz	45 Hz - 20 kHz
High Frequency Rated Power (Watt)	28W	36W
Low Frequency Rated Power (Watt)	45W	75W
Input Sensitivity	- 2 dBu	- 2 dBu
LF Contour Control	NO	NO
HF Contour Control	(-2 dB, -1 dB, FLAT, +1 dB)	(-2 dB, -1 dB, FLAT, +1 dB)
Audio Input	RCA, Balanced 1/4" TRS, Balanced XLR	RCA, Balanced 1/4" TRS, Balanced XLR
Crossover	1.9 kHz	1.8 kHz
Maximum SPL	90dB	100dB
Color	Black/White	Black/White
Dimension (W x H x D)	270x 230 x 320 mm	313 x 268 x 383 mm
Weight	9.2 Kg	12.6 Kg



MSK Series

Description

The MSK series is a completed full range speakers and Subwoofer, the multi-function enclosed designed for PA systems or stage, perfectly professional solution for a wide range of venues, including auditoriums, lecture halls, conference rooms, restaurants and LiveHouse bars.

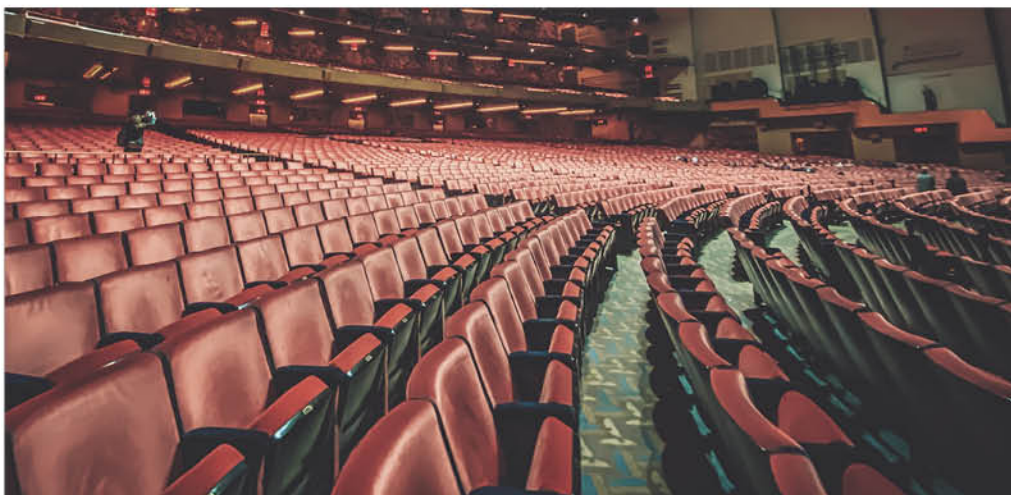
Application

- School, Lecture halls
- Government auditoriums, Conference rooms
- Mall, gym, small Live House
- Restaurant Hotels, banquet halls



	MSK8	MSK10	MSK12
Product type	Two Way Speaker	Two Way Speaker	Two Way Speaker
Sensitivity	98 dB	99 dB	98 dB
Frequency response	78 Hz – 18 kHz	62 Hz – 18 kHz	60 Hz – 18 kHz
Coverage angle	90° x 60°	90° x 60°	90° x 60°
Impedance	8 ohms	8 ohms	8 ohms
Terminal	Speakon NL4	Speakon NL4	Speakon NL4
Drivers	1 x 1.34" HF, 1 x 8" LF	1 x 1.34" HF, 1 x 10" LF	1 x 1.74" HF, 1 x 12" LF
Max. Sound Level	121dB	123dB	128dB
Power Handling	300W(Program) 600W(Peak)	500W(Program) 1000W(Peak)	600W(Program) 1200W(Peak)
Rigging Points	12*M8	12*M8	12*M8
Color	Black	Black	Black
Dimension (H x W x D)	376 x 234 x 234 mm	504 x 324 x 311 mm	612 x 378 x 304 mm
Weight	8 Kg	13.5 Kg	19 Kg

	MSK15	MSK18B	MSK215
Product type	Two Way Speaker	Subwoofer	Two Way Speaker
Sensitivity	99 dB	100 dB	102 dB
Frequency response	51 Hz – 18 kHz	40 Hz–250 Hz	51 Hz–18 kHz
Coverage angle	90° x 60°	360°	90° x 60°
Impedance	8 ohms	8 ohms	8 ohms
Terminal	Speakon NL4	Speakon NL4	Speakon NL4
Drivers	1 x 1.74" HF, 1 x 15" LF	1 x 18" LF	1 x 1.74" HF, 2 x 15" LF
Max. Sound Level	130dB	131dB	130dB
Power Handling	800W(Program) 1600W(Peak)	1400W(Program) 2800W(Peak)	1600W(Program) 3200W(Peak)
Rigging Points	12*M8	NA	12*M8
Color	Black	Black	Black
Dimension (H x W x D)	684 x 432 x 354 mm	684 x 540 x 595 mm	1074 x 432 x 377 mm
Weight	20 Kg	40 Kg	45 Kg





AXIS Series

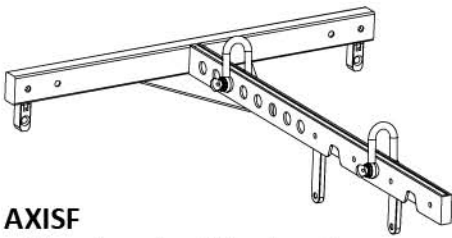
Common Features

- Ultra-Compact 2-way curvilinear array module
- Exceptional pattern control due to symmetrical design
- 2x 10" (3in VC) MF + 1.4" (3in VC) Neodymium HF driver
- 2x NL4 connected in parallel
- Passive operation
- High performance and crystal clear reproduction
- Faithful dynamic response and great range
- Integrated rigging system for ground stacking and flown configurations
- Rugged and durable 15mm birch plywood construction
- Finished with special Polyurea paint, waterproof and resistant to erosion and degradation
- Touring sound reinforcement for small and mid-sized venues



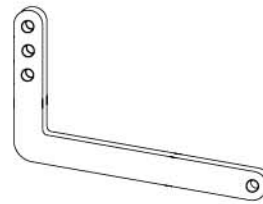
	Axis20V	Axis18B
FREQUENCY RESPONSE (-3dB)	55 Hz–18 kHz	35Hz-300Hz
FREQUENCY RESPONSE (-10dB)	50 Hz–20 kHz	
DRIVERS	2x10"(250mm)/2.5"voice coil LF	1x18"(460mm)/3"voice coil LF
	1x1.4"(36mm)/3"voice coil HF	—
RATED POWER (program / peak)	1120W program /2240W peak	1000W program/2000W peak
SENSITIVITY	104dB 1 watt/1meter	100dB 1 watt/1 meter
MAXIMUM SPL	131dB continuous,137dB peak	127dB continuous,133 dB peak
IMPEDANCE	8 ohms nominal	8 ohms nominal
DISPERSION (-6dB)	Horizontal: 100°	—
	Vertical coverage: Varies, depending on array length and configuration	—
CROSSOVER FREQUENCIES	750 Hz passive	—
INPUT CONNECTORS	2xSpeakon NL4	2xSpeakon NL4
PACKAGE SIZE	677mmx311mmx483mm	677mmx525mmx660mm
NET WEIGHT	31 kg/pc	42 kg/pc
GROSS WEIGHT	32 kg/pc	46 kg/pc

Optional Accessories



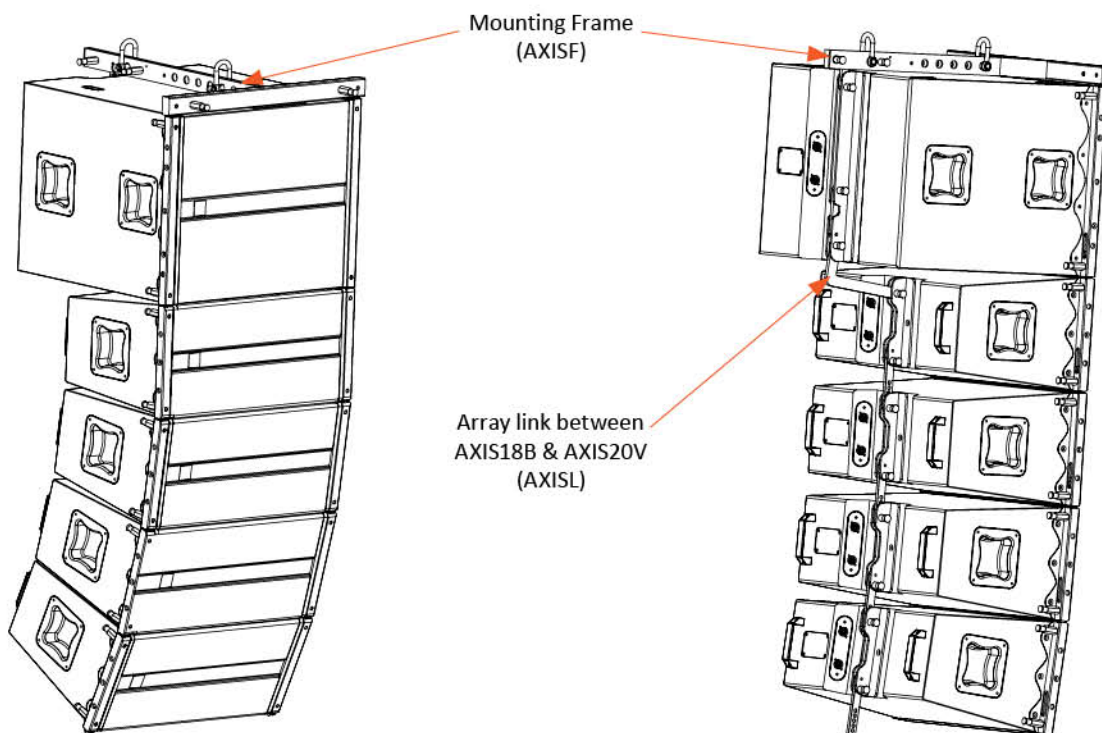
AXISF

- T type frame for AXIS series only



AXISL

- Array link between Axis20V & 18B





SPM-1

24-bit
96KHz

125
dB



Common Features

- Support both PC and Mac, driver-free
- Great sound performance
- Headphone output with volume control
- Microphone mix control

Specifications

- Pick up Pattern: Cardioid
- Frequency: 20 Hz-20 kHz
- Sensitivity: -36 dB +/- 2 dB (0 dB=1 V/Pa at 1 KHz)
- Max Input SPL: 125 dB (at 1 KHz, 1% T.H.D)
- Sampling Rate: 24 bit/96 KHz
- Outputs: USB and 3.5 mm stereo jack
- Microphone is 44.1 / 48 / 88.2 / 96kHz@16bit or 24bit
- Playback is 44.1 / 48kHz @ 16bit
- Dimensions: 186.8 x 50.4 x 48.1 mm
- Weight: 370 g

Box Contains



USB cable



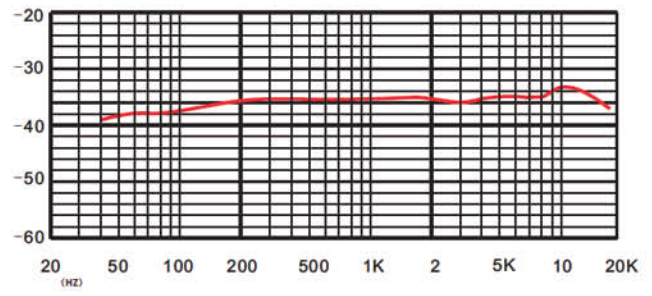
Tripod stand



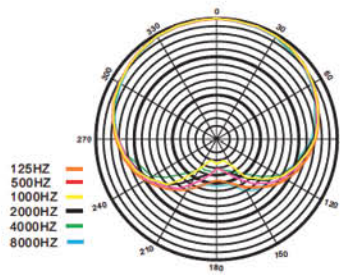
Metal holder



Frequency Response



Polar Patter





PAA3X

Handheld Audio Analyzer

Right alongside a flashlight and duct tape, no serious audio engineer should go anywhere without the Phonic PAA3X in their back pocket. Developed on the back of the popular PAA3, the PAA3X inherits all the widely praised features of its predecessor yet with many more surprises and an all-new design.

This handheld audio analyzer is resoundingly accurate and features an array of different tools, including 31-band and 61-band real-time spectrum analyzers, a reverb time analyzer, sound pressure and line level meters, internal signal generator, EQ setting calculations and speaker polarity checking abilities. It also features a detachable calibrated measurement microphone that offers greater flexibility in mic positioning.

All functions and menus are controlled through central jog dials, so your other hand is free to adjust audio settings. A large, bright LCD display provides visibility in any environment, and a rechargeable lithium-ion battery ensures the PAA3X is always ready when you need it.



RTA

Take measurements in real-time in resolutions of 1/3 and 1/6 octaves at varying weightings and response times.



Meter

Measure sound pressure, dBu, dBV and voltage levels through this highly accurate meter. Take sound pressure level measurements between 30 and 130 dB SPL; dBu measurements between -85 and 25 dBu; dBV between -87.2 and 22.8 dBV, and; Voltage measurements can be taken between 0.0436mV and 13.8V.



RT60

Measure the reverb time of any room and view time results on screen.



Polarity

Check the polarity of any loudspeaker with this function. The polarity signal can be taken from the PAA3X's built-in signal generator, or the PAA3X take measurements with any standard polarity signal.

Features

- 31-band and 61-band real time spectrum analyzer
- 31-band and 61-band EQ setting value display (Boost/Cut)
- Detachable calibrated measurement microphone
- Includes 5m mic cable for remote placement of measurement mic, perfect for home theater and automotive application
- SPL meter and level meter with three level range selections
- Sound pressure level meter from 30 dB to 130 dB
- Line signal measurement display in dBu, dBV, or Volts (AC)
- Polarity function for checking phase of any loudspeaker
- Mic calibration through standard 94dB sound level calibrator
- Snapshot button for instant screen captures saved to SD card
- Signal generator with pink noise, sine wave, sweep wave and polarity test signal
- A, B, C and flat weightings all available for measurements
- Maximum level and peak hold display
- Balanced XLR input and output connectors
- Rechargeable lithium-ion battery
- Micro USB port for charging battery
- AC power adapter and USB cable included
- Microphone stand included for flexible mic placement
- Also includes SD card and microphone stand adapter
- 156 x 90 x 37.5 mm (6.14" x 3.54" x 1.5") / 325 g (0.7 lbs)



PAA6

2-Channel Audio Analyzer with Color Touch LCD

For the sound engineer who settles for nothing short of perfection, Phonic offers the PAA6 Audio Analyzer – a dual-channel, digital tester with 9 critical audio and signal analyzer functions. All accessible through the palm-sized unit's color touch-screen, the PAA6 utilizes an industrial-grade real-time spectrum analyzer, RT60 reverb calculator, LEQ, EQ setting and phase checking, polarity and scope functions, FFT, THD+N, and 2 built-in microphones that can take precise measurements from multiple positions. Complete with onboard memory and computer connectivity, a USB 2.0 connector and SD card slot are included to easily transfer information with a computer. The PAA6 is not only the ideal tester for pro engineers, live situations, and industrial sound, but also the go-to unit for regulatory purposes and product development.

Features

- Powerful dual channel palm-size audio analyzer
- 480 x 272 color LCD touch screen
- Two built-in measurement condenser mics
- Tone generator includes pink noise, white noise, sine wave, sweep, polarity, triangle and square
- Elegant graphical user interface
- Long-lasting rechargeable lithium-ion battery system
- Useful functions include RTA, LEQ, RT-60, FFT, THD+N, Polarity, Phase, Scope and Meter (dB SPL, dBu, dBV, Volt)
- USB 2.0 port and SD card slot included for storing and retrieving data
- 30 to 130 dB SPL meter
- 175 x 40 x 106 mm (6.89" x 1.57" x 4.17") / 0.46 kg (1 lbs)



RTA

Take measurements in real-time in resolutions of 1, 2/3, 1/3 and 1/6 octaves at varying weightings and response times.



FFT

The Fast Fourier Transform acts as a high resolution real time analyzer with a much wider frequency range and fast response time.



RT60

Measure the reverb time of any room and view a standard reverb graph with a time and level axis. Also allows users to refine results to filter particular frequencies.



THD+N

Run a test tone through any piece of audio equipment and back to the PAA6 to read the standardized total harmonic distortion plus noise results of that unit.



Phase

View the phasing of two signals through this accurate graph, updated in real-time.



Meter

Measure sound pressure, dBu, dBV and voltage levels through this highly accurate meter. Take sound pressure level measurements between 30 and 130 dB SPL; dBu measurements between -85 and 25 dBu; dBV between -87.2 and 22.8 dBV, and; Voltage measurements can be taken between 0.0436mV and 13.8V.



Scope

View the waveform of any signal through this oscilloscope. Horizontal division time and level range are both user definable, and users can zoom in and out to better view the waveform.



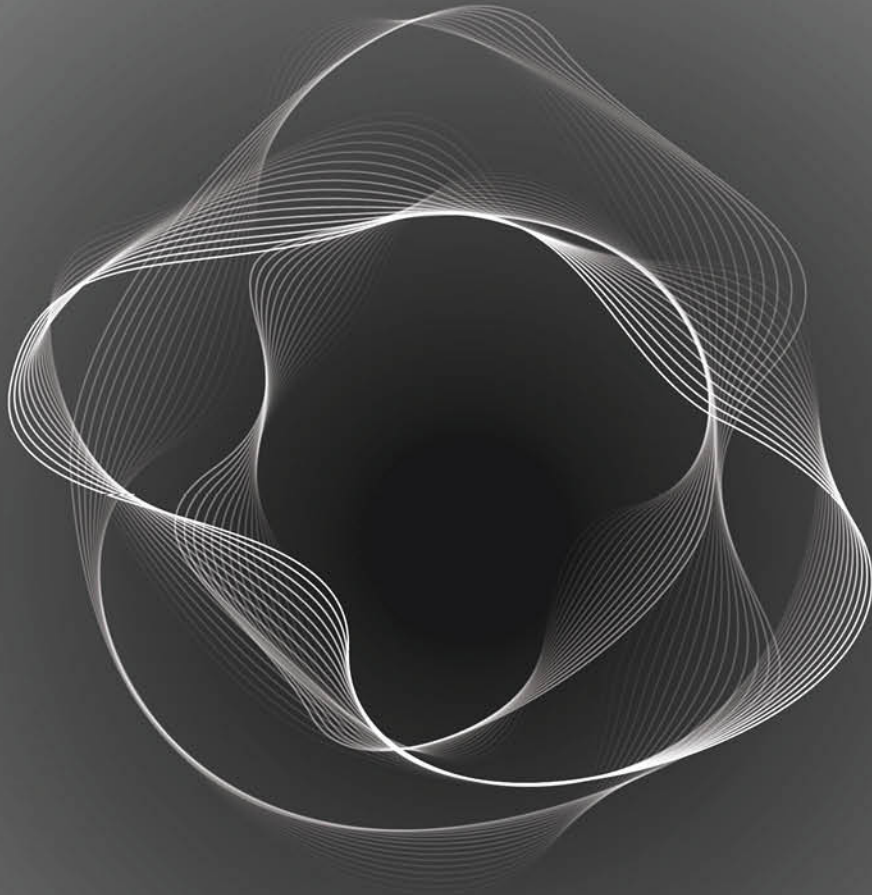
Polarity

Check the polarity of any loudspeaker with this function. The polarity signal can be taken from the PAA6's own signal generator, or the PAA6 take measurements with any standard polarity signal.



LEQ

Find the equivalent continuous noise level of a room or other venue over a period of time. Measurements can be taken anywhere between 1 minute and 48 hours.



PHONIC Corporation
www.phonic.com