

Using for the first time

⚠ Before using the tumble dryer for the first time, ensure that it is correctly installed and connected. Please read the separate operating instructions supplied with the appliance.



⚠ Damage caused by switching the appliance on too soon. This can damage the heat pump. After setting up the tumble dryer, wait for at least one hour before starting a drying programme.

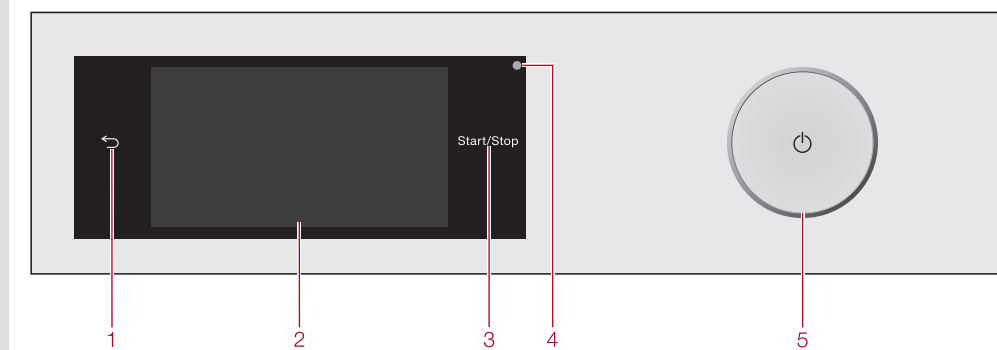
Switching on the tumble dryer

■ Press the sensor. The welcome screen will light up. The display will guide you step by step through the initial commissioning process. For further information, please refer to the separate operating instructions.

Energy saving tips

- Spin the laundry at the maximum spin speed in the washing machine
- Dry a full load
- Keep room temperature not too warm
- Clean the fluff filters

Operation



- 1** **sensor**
Takes you back a level in a menu.
- 2** **Touch display**
- 3** **Start/Stop sensor**
Touching the Start/Stop sensor starts the selected programme or cancels a programme that has already started. The sensor flashes slowly as soon as it is possible for a programme to be started and then lights up constantly after the programme has started.
- 4** **Optical interface**
For service technicians.
- 5** **sensor**
For switching the tumble dryer on and off. The tumble dryer switches off automatically to save energy. This occurs 15 minutes after the end of the programme/Anti-crease phase, or after being switched on if no further selection is made.

Main menu

After switching on the tumble dryer, the main menu will appear in the display. You can access all important submenus from the main menu. Touch the sensor at any time to return to the main menu. Values that have not yet been confirmed with the OK sensor are not saved when you return to the main menu.

Programmes
For selecting drying programmes.

Favourite programmes
You can save your own customised drying programmes.

Wash2Dry

A drying programme tailored to the laundry is set in conjunction with the connected washing machine. Tip: This function must be activated under Settings.

MobileStart

With MobileStart you can operate your tumble dryer remotely with the Miele@ mobile App.

Drying assistant

The Drying assistant guides you step by step so that you can select the optimum drying programme for your laundry.

Settings

You can alter the tumble dryer's electronics to suit changing requirements in the Settings menu.

Touch display and sensor controls
The and Start/Stop sensors and the sensors in the display react to fingertip contact.

The touch display can be scratched by pointed or sharp objects, e.g. pens. Only touch the display with your fingertips.

Operating the touch display

Scrolling through menus
You can scroll to the right or the left by swiping your finger across the screen. The orange bar under the pictures shows that there are further options to choose from.

Selecting
Touch an option in the menu to select it. If there are multiple options, the selected option will be highlighted in orange.

Pull-down menu
Touch the top edge of the screen in the middle and drag down with your finger.

Drying

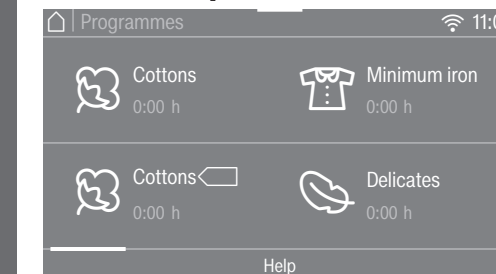
1. Notes on correct laundry care

⚠ Ensure that any foreign objects (e.g. detergent dispensing balls, lighters, etc.) have been removed from the laundry. Such items could melt or explode and cause damage to the dryer or the laundry.

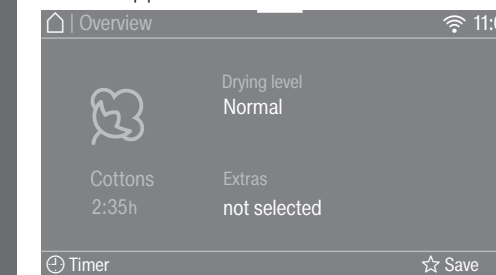
- Sort the laundry according to the type of fibre and weave, size, garment care label symbol and the drying level required.
- Check seams and stitching to ensure that padding and linings are intact.
- Fasten duvet covers and pillow cases to prevent small items from being rolled up inside them.
- Tie together textile belts and apron ties.
- Sew in or remove loosened underwiring from bras.

2. Selecting a programme

- Touch the Programme sensor.



- Scroll to the right of the display until the programme you want appears.

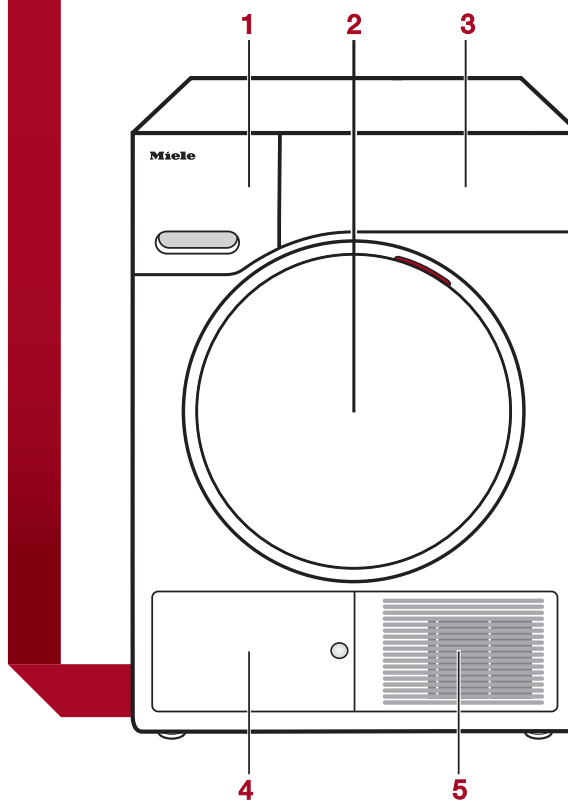


3. Selecting

Touch the sensor for that programme. You can change the Drying level or the Duration. There are 4 further ways of selecting a programme.

4. MobileStart

1. The Wash2Dry function
2. Favourites
3. Drying assistant
4. MobileStart



- 1** **Condensed water container**
- Empty after each drying programme
- *Steam care programme: Note -min- marker*
- 2** **Door**
- 3** **Control panel**
- 4** **Access panel for the heat exchanger and plinth filter**
- Do not open during drying
- 5** **Cool air intake grille**
- Do not obstruct with a laundry basket or other objects

When selecting Wash2Dry

After the programme has finished in the washing machine, the tumble dryer display will show the most appropriate drying programme for the laundry.

- Once the wash programme has ended, place the clean laundry in the tumble dryer.
- To start the programme, all you need to do is press the Start/Stop sensor on the tumble dryer.

3. Selecting programme settings

Programmes with drying levels
Cottons, Minimum iron, Delicates, Bed linen, Automatic, Express, Shirts, Denim, Steam care, Sportswear, Outerwear, Pre-ironing, Extra quiet
The preset drying level for the programme can be changed.

- Touch the Drying level sensor.
- Scroll in the display until the desired drying level appears.
- Touch the sensor for that drying level.

Timed drying programmes and other programmes

Warm air, Cool air, Basket programme, DryFresh
You can change the duration in 10-minute increments.

- Touch the Duration sensor.
- Place your finger on the number that you want to change and move your finger in the desired direction.
- Confirm with the OK sensor.

Cottons, Woollens handcare, Silks handcare, Proofing, Standard pillows, Large pillows, Cottons hygiene
The drying result is preset by the dryer and cannot be altered.

Selecting Extras

- Touch the Extras sensor.
- Touch the sensor for the Extra you want.
- Confirm with the OK sensor.

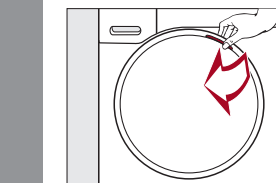
Freshen up
For removing or reducing odours in clean (dry or damp) clothing.

Gentle tumble
Low temperature drying for delicate fabrics with the symbol on the care label, e.g. acrylic garments.

Eco
The compressor power is reduced, which saves energy. The programme duration is increased.

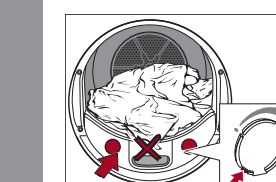
Quick
Shortened programme duration for hardwearing fabrics.

4. Loading the tumble dryer

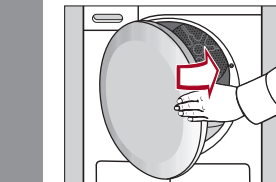


- Open the drum door.
- Unfold the laundry and load loosely into the drum.

⚠ Do not overload the drum. Overloading can cause unnecessary wear and tear of the laundry, give a disappointing drying result and cause more creasing.



⚠ If you are not using a fragrance flacon: the tabs must be pushed down completely (see arrow) to ensure both sockets are closed.



⚠ When closing the door, make sure that laundry does not get trapped in the door opening.

- Shut the door with a gentle swing.

5. Programme start

The programme can be started when the Start/Stop sensor is flashing on and off.

- Touch the Start/Stop sensor. The Start/Stop sensor lights up constantly.

Adding laundry

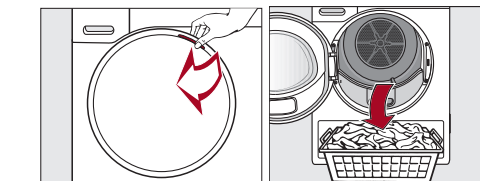
You can add laundry.
■ Follow the instructions in "Changing the programme sequence".

6. End of programme - unloading the drum

The programme is finished when Finish/Anti-crease appears in the display. The Start/Stop sensor no longer lights up.
- To save energy, 10 minutes after the end of the programme the Start/Stop sensor will begin to flash slowly and the display will go out.
- The tumble dryer switches off automatically.

⚠ Do not open the door before the end of the programme.

- Open the drum door.



- Remove the laundry.

⚠ Check that all items have been removed from the drum. If items are left in the dryer, they could be damaged by over-drying when the dryer is used the next time.

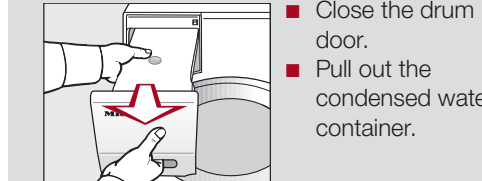
If the dryer is switched on at the mains and the door is opened, the drum lighting will come on. It will go out after a few minutes to save energy.

- Switch the tumble dryer off with the sensor.
- Clean the fluff filters.
- Close the drum door.
- Empty the condensed water container.

Emptying the condensed water container

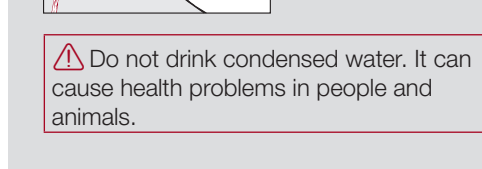
Empty the condensed water container after every drying programme.

Empty the container or check the drain outlet will light up in the display if the maximum level of the condensed water container is reached.
To delete the message: Open and close the door while the dryer is switched on.



- Close the drum door.
- Pull out the condensed water container.

■ To prevent water running out, keep it in a horizontal position when carrying it. Hold it at the front and at the back.



⚠ Do not drink condensed water. It can cause health problems in people and animals.

Changing

Adding or removing laundry

You have forgotten an item of laundry, but the programme has already started.
■ Touch the Add laundry sensor. Add laundry and Door unlocked light up in the display. The Start/Stop sensor flashes slowly.

- Add or remove items.
 - Close the drum door.
 - Touch the Start/Stop sensor. The programme will start.
- * **Exceptions:**
In some cases, e.g. during the cooling phase or in the Proofing programme, you cannot add laundry.

Cancelling a programme while it is running and selecting a new programme

It is no longer possible to change the selected programme. This prevents the appliance being operated unintentionally, e.g. by children.

You will need to cancel the current programme before you can select a new one.

- Touch the Start/Stop sensor. The following will appear in the display:
- Select Yes. Programme cancelled will appear in the display.
- Open the drum door.
- Close the drum door.
- Select a programme.
- Touch the Start/Stop sensor.

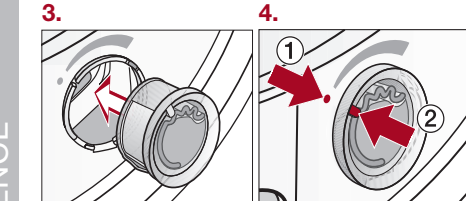
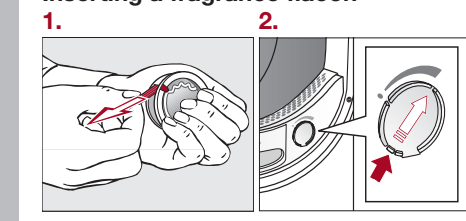
Fragrance flacon/FragranceDos

Tip: This dryer has two places for inserting fragrance flacons. You can use one or both sockets to give your laundry a particular fragrance.

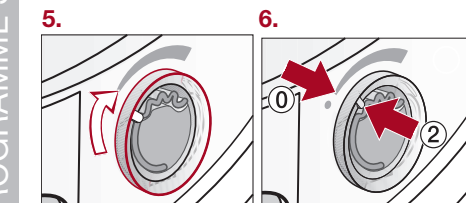
Close the unused socket.

Before using a fragrance flacon, please read "Warning and Safety instructions - Using a fragrance flacon (optional accessory)" and "Fragrance flacon" in the operating instructions.

Inserting a fragrance flacon



Markers ① and ② must line up with each other.



Markers ② and ③ must line up with each other.

Before drying

- Turn the outer ring clockwise.

The further you open the flacon, the more intense the fragrance.

To avoid the fragrance escaping needlessly:



When not in use, you can store the fragrance flacon in its original packaging. Ensure that it is positioned so that it does not leak.

Before cleaning the fluff filters

- Remove the fragrance flacon.
- Only store the fragrance flacon in its original packaging.

Never lay the fragrance flacon down. Otherwise, the fragrance will leak out.

CHANGING THE PROGRAMME SEQUENCE

DRYING

OPERATION

Programme overview

Programme	Load (dry laundry)	Items	Extras
Cottons □	9 kg	Cotton items such as those described under <i>Cottons Normal</i> with normal residual moisture.	Machine iron
Cottons	9 kg	Towelling, jersey wear, T-shirts, underwear, baby clothes, workwear, covers, jackets, bathrobes, and flannel bed linen. Warning: Do not use <i>Extra dry</i> for jersey fabrics (e.g. T-shirts, underwear, baby clothes), as they have a tendency to shrink.	Hand iron 60 Slightly dry Normal Normal plus Extra dry
Minimum iron	4 kg	Workwear, overalls, pullovers, dresses, trousers, leggings and table linen.	
Delicates	2.5 kg	Shirts, blouses, lingerie, appliquéd garments.	
Bed linen	4 kg	Bed linen, pillow cases.	
Automatic	5 kg	Mixed loads of garments suitable for the <i>Cottons</i> and <i>Minimum iron</i> programmes.	
Woolens hand-care	2 kg	Pullovers, cardigans, socks, stockings.	
Silks handcare	1 kg	Blouses, shirts.	
Express	4 kg	Garments suitable for the <i>Cottons</i> programme.	
Shirts	2 kg	Shirts and blouses.	
Denim	3 kg	Jeans, jackets, skirts, shirts.	
Steam care	1 kg	Cotton trousers, anoraks, shirts.	
Sportswear	3 kg	Sportswear which is suitable for drying in a tumble dryer.	
Basket programme	3.5 kg Basket load	Bags, shoes, soft toys, beanies, scarves, gloves, sequined tops only with the basket (optional accessory).	
Outerwear	2.5 kg	Outerwear which is suitable for drying in a tumble dryer.	
Proofing	2.5 kg	Microfibre fabric, skiwear, outerwear, fine close weave cotton garments (poplin), tablecloths.	
Warm air	9 kg	Fire hazard! Do not use proofing agents containing paraffin. Thick and multi-layered jackets, pillows, sleeping bags, blankets.	
Cool air	9 kg	Any garments which need to be aerated.	
Standard / Large pillows	-	Pillows (2 small 40 x 80 cm or 1 large 80 x 80 cm).	
Cottons hygiene	4 kg	Cottons and linen fabric which will be in direct contact with the skin, e.g. underwear, baby clothes, bed linen, towelling.	
Extra quiet	9 kg	Mixed loads of garments suitable for the <i>Cottons</i> and <i>Minimum iron</i> programmes.	
Pre-ironing	1 kg	Cotton trousers, anoraks, shirts.	
DryFresh	9 kg	Any item which only needs airing and refreshing up. Use DryFresh flacon (optional accessory).	

X = yes, - = no, (A) = Gentle tumble, (B) = Freshen up

Tips on drying
 - Always observe the maximum recommended loads given in the Programme chart.
 Overloading can cause unnecessary wear and tear to the laundry. It can give a disappointing drying result and cause more creasing.

Garment care label symbols
 □ Normal / Higher temperature
 □ Reduced temperature: select *Gentle tumble* (for delicate fabrics).
 □ Do not tumble dry

Ironing
 ☞ Very hot
 ☞ Hot
 ☞ Warm
 ☞ Do not iron

PROGRAMME CHART

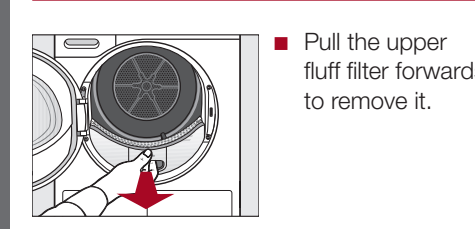
Cleaning and care

Fluff filters

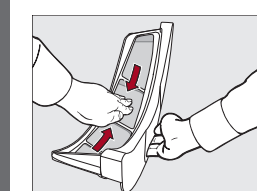
Removing visible fluff

Clean the 2 fluff filters in the door opening after every drying cycle.

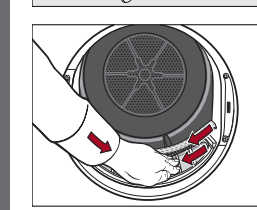
Remove the fragrance flacon (if fitted).



- Pull the upper fluff filter forwards to remove it.



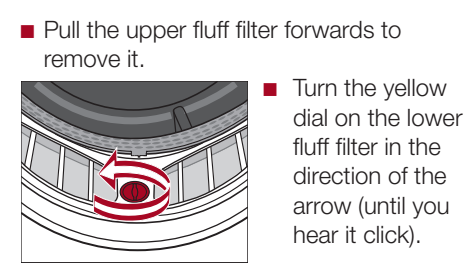
- Use your fingers or a vacuum cleaner to remove the fluff from the surface of the filter.



- Push the upper fluff filter back in until it clicks into position.
- Close the door.

Cleaning the fluff filters and air flow openings thoroughly

If the drying duration has become longer or the surface of the filters is visibly compacted with fluff, you should carry out the following cleaning procedure.



- Pull the upper fluff filter forwards to remove it.
- Turn the yellow dial on the lower fluff filter in the direction of the arrow (until you hear it click).



- Hold the dial and pull the fluff filter forwards to remove it.



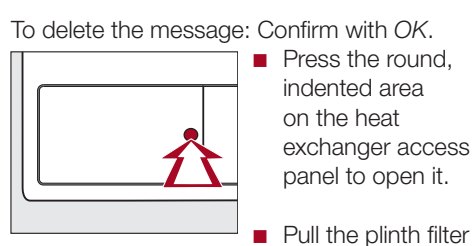
- Use a vacuum cleaner with a long crevice nozzle attached to remove any visible fluff from the upper air flow openings.
- Flush the fluff filters through with warm running water.
- Shake the fluff filters thoroughly and then dry them carefully.

Ensure the filters are dry before replacing them. Wet filters could cause operational faults.

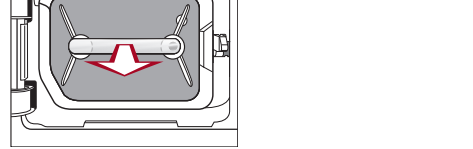
- Refit all of the fluff filters and close the door.

Plinth filter

Clean the plinth filter when the programme duration has been extended or when the following lights up: **!** Clean the fluff and plinth filters. See the operating instruction manual for more information.

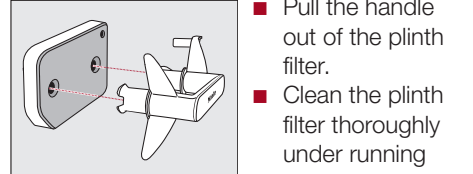


- Pull the plinth filter out by the handle.



- Close the heat exchanger access panel.

Removing the plinth filter will cause a guide pin in the dryer to come out. This pin ensures that the heat exchanger access panel can only be closed if the plinth filter is fitted.



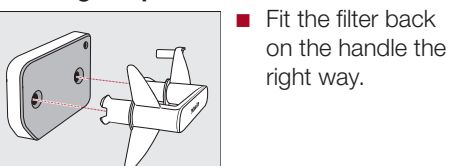
- Carefully squeeze the water out of the plinth filter.

⚠ The plinth filter must not be refitted dripping wet.

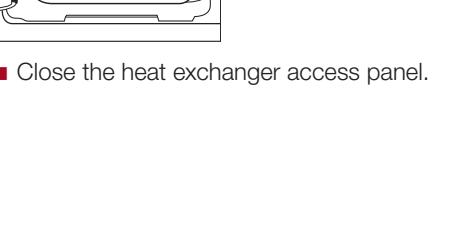


- Use a damp cloth to remove any fluff from the access panel.

Refitting the plinth filter



- Fit the filter back on the handle the right way.
- Insert the handle with the plinth filter attached over the two guide pins.



- Close the heat exchanger access panel.

Problem solving guide

Problem/Fault message	Possible cause and remedy
000 lights up after the tumble dryer is switched on and a programme cannot be selected.	Access via a code has been activated. Enter the code and confirm the entry. Deactivate the code if you do not wish this message to appear in the display the next time the appliance is switched on.
After a programme is cancelled, the following lights up: Empty the container or check the drain outlet.	The condensed water container is full or there is a kink in the drain hose. <ul style="list-style-type: none"> ■ Empty the condensed water container. ■ Check the drain hose. To switch off the message: <ul style="list-style-type: none"> ■ Open and close the door while the dryer is switched on.
Fill condensate container with water	This is to remind you that water is taken from the condensed water container when the <i>Steam care</i> programme is being used. The condensed water container must be filled with water to at least the -min- marker. <ul style="list-style-type: none"> ■ Confirm with OK.
Please open and close the door	After selecting the <i>Steam care</i> programme, you are prompted to load laundry. <ul style="list-style-type: none"> ■ Load the laundry in the drum.
At the end of the programme	There is a build-up of fluff. See "Cleaning and care" in the operating instructions. <ul style="list-style-type: none"> ■ Clean the fluff filters. ■ Clean the plinth filter. To switch off the message: <ul style="list-style-type: none"> ■ Confirm with OK.
Programme cancellation: Clean the fluff filter. Check the airways.	There is a blockage due to fluff. See "Cleaning and care" in the operating instructions. <ul style="list-style-type: none"> ■ Clean the fluff filters. ■ Clean the plinth filter. ■ Clean the area underneath the air flow openings. ■ Clean the heat exchanger. To switch off the message: <ul style="list-style-type: none"> ■ Switch the dryer off and back on.
Finish/Cooling down	The programme has finished but the laundry has not yet cooled down. <ul style="list-style-type: none"> ■ Either remove the laundry and spread it out to cool down or leave it in the tumble dryer to cool down during the cooling phase.

Problem/Fault message	Possible cause and remedy
The display is in a different language.	A different language has been selected in "Settings - Language". <ul style="list-style-type: none"> ■ Set the language you want. The flag symbol serves as a guide.
The display remains dark and the Start/Stop sensor does not light up or flash.	There is no power to the tumble dryer. <ul style="list-style-type: none"> ■ Check whether the mains plug is plugged in and switched on. ■ Check whether the circuit breaker has tripped. <p>The tumble dryer has switched off automatically to save energy.</p> <ul style="list-style-type: none"> ■ Touch any sensor. This switches Standby off.
The laundry is not sufficiently dry.	The load consisted of different types of fabric. <ul style="list-style-type: none"> ■ Finish drying using the <i>Warm air</i> timed drying programme. ■ Select a more suitable programme next time. <p>Tip: You can alter the residual moisture level for some programmes individually. See "Settings".</p>
Items made of synthetic fibres are charged with static electricity after drying.	Synthetic fibres tend to attract static charge. Static charge can be reduced by adding fabric softener to the final rinse in the washing programme.
There is a build-up of fluff.	Fluff is principally the result of friction when garments are being worn and to some extent when they are being washed. Machine drying hardly causes any fluff to form. Fluff is collected by the fluff filters and the plinth filter and can be removed easily. See "Cleaning and care".
There are humming noises.	This is not a fault. The compressor (heat pump) is operating. No action is required. These noises are normal and caused by the operation of the compressor.

PROBLEM SOLVING GUIDE

Miele

Quick Start Guide Heat pump tumble dryer



These short instructions are not a substitute for the operating instructions supplied with the appliance. Please read the operating instructions supplied with your tumble dryer before using it for the first time. Take note of the Warning and Safety instructions, as well as the full descriptions on how to use your appliance.