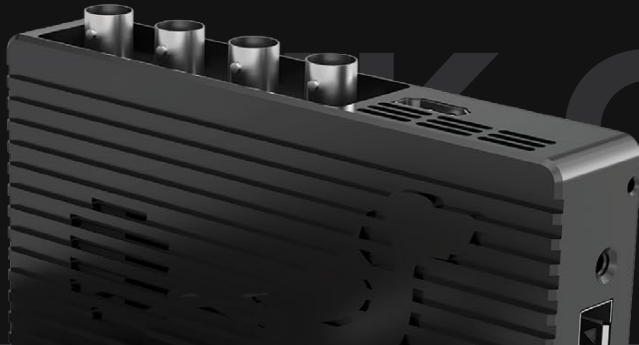


# 4K HDMI 4K 12G SDI 4K QUAD



## Next Level NDI® Tools.

Following on from the award winning HD NDI® products, the 4K Family has been engineered from the ground up for real-world users. Built around BirdDog's custom NDI® silicon chip and housed in an aircraft grade aluminium case, features include 12G SDI and HDMI 2.0 inputs and outputs, built-in cross converter, SFP+ port for 10GbE connectivity, active loop outs, audio intercom system, NDI® tally system, PoE, and compatibility with BirdDog's Comms Pro and Central Pro apps.

### Encode & Decode up to 4Kp60.

With support for all resolutions up to 4Kp60, including all HD resolutions, Encoding and Decoding 4K Full NDI® has never been easier.

### 12G & HDMI 2.0 connections.

All SDI connectors on the 4K line are 12G SDI, including all four SDI connectors on 4K Quad. All the HDMI connectors are 2.0 for maximum compatibility with your sources and destinations.

### SFP+ for 10GbE & long range.

Industry standard SFP+ connection allows for short, medium, and long range connections over fiber and supports Ethernet protocols from 1GbE to 10GbE.

### NDI Tally that just works.

A full Tally system is built right into the 4K Family and it requires zero configuration. Includes a built-in large Tally light for your on-air talent to easily see which camera is live, plus user selectable Tally borders on loop out.

### Cross Converter.

All 4K products include a built in cross converter and of the 12G SDI inputs can be looped out the HDMI 2.0 port and any of the HDMI 2.0 inputs can be looped out the 12G SDI.

### PTZ Control.

With the optional USB to Ethernet dongle you can control any PTZ camera that supports NDI®, NDIHX, or Visca over IP.



#### 4K HDMI



1x HDMI 2.0 Input  
1x HDMI 2.0 Output  
1x 12 G SDI Output

#### 4K 12G SDI



1x HDMI 2.0 Output  
1x 12 G SDI Input  
1x 12 G SDI Output

#### 4K QUAD



1x HDMI 2.0 Output  
4x 12 G SDI Input/Output

\*Pricing and specifications subject to change.

### Product Specifications



## 4K FAMILY

### Features & Specifications Comparison

Feature/Specification	4K HDMI	4K 12G-SDI	4K QUAD
<b>SUPPORTED VIDEO FORMATS</b>			
UHD 3840x2160	23.98, 25.00, 29.97, 30.00, 50.00, 59.94, 60.00		
HD 1920x1080p	23.98, 25.00, 29.97, 30.00, 50.00, 59.94, 60.00		
HD 1920x1080i	50.00i, 59.94i		
HD 1280x720p	50.00p, 59.94p, 60.00p		
<b>VIDEO I/O CONNECTIVITY</b>			
HDMI 2.0 Input	✓	-	-
HDMI 2.0 Output	✓	✓	✓*
12G SDI Input	-	✓	-
12G SDI Output	✓	✓	-
12G SDI Selectable Input/Output	-	-	4
<b>AUDIO INPUT</b>			
HDMI	2Ch, 48kHz	-	-
SDI	-	2Ch, 48kHz	2Ch, 48kHz
3.5mm AUDIO	Microphone/Line Input		
<b>AUDIO OUTPUT</b>			
HDMI	2Ch, 48kHz		
SDI	2Ch, 48kHz		
3.5mm AUDIO	Stereo Headphone/Line Output		
<b>VIDEO CODEC SUPPORT</b>			
NDI (Full bandwidth i-frame compression)	✓	✓	✓
<b>DISPLAY</b>			
Integrated 4-line OLED Status Display	✓	✓	✓
Integrated Multiviewer*	-	-	HDMI OUT
<b>TALLY</b>			
Onboard Bi-color Tally indicator	✓	✓	✓
Selectable Tally indicator on video loop outputs	✓	✓	✓
<b>NETWORK CONNECTIVITY</b>			
Ethernet RJ45 1000baseT w/integrated PoE (Power over Ethernet)	✓	✓	✓
Open SFP+ Cage (10Gb SFP+ Adapters sold separately)*	✓	✓	✓
Embedded Web configuration Panel	✓	✓	✓
<b>WEIGHTS &amp; DIMENSIONS</b>			
Size	135x85x25mm		
Weight	260g	260g	320g
<b>POWER</b>			
DC Input	DC 12V / 16W		
PoE (Power over Ethernet)	PoE+ 802.3at		
<b>EXTERNAL INTERFACE SUPPORT (requires optional cables)*</b>			
USB to RJ45 for additional network in device support	✓	✓	✓
USB to RJ45 for VISCA over IP PTZ control	✓	✓	✓
USB to Serial PTZ control (RS232)	✓	✓	✓
USB ISO recording	✓	✓	✓

\* Feature coming soon with free firmware update.