

# EUROLON

twin shaft mixers



## THÔNG TIN LIÊN HỆ

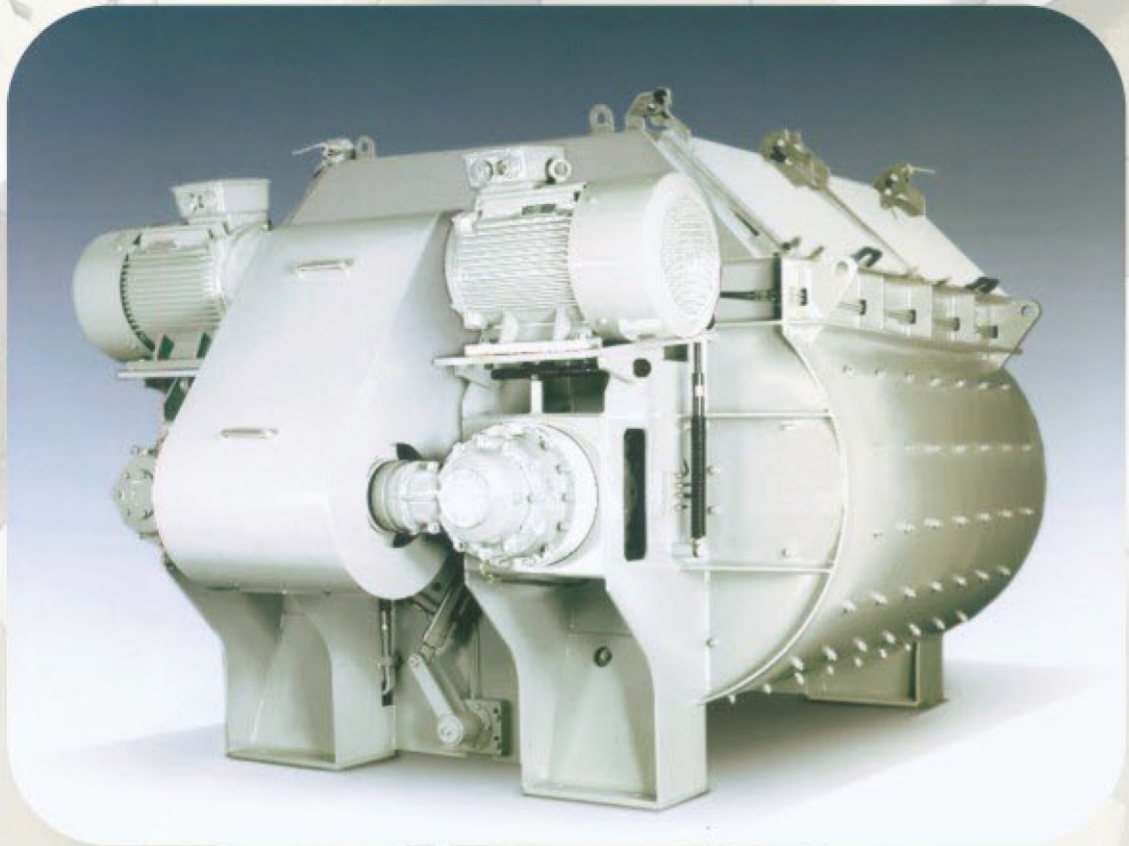
### **CÔNG TY TNHH ĐẦU TƯ VÀ PTKT TOÀN NĂNG**

- Vp: 76/6 Đường số 5 P. Linh Xuân Tp. Thủ Đức Tp. HCM  
- Showroom: 99 Lê Văn Tám Dĩ An Bình Dương  
Địa chỉ: - Xưởng 1: Long Bình Biên Hòa Đồng Nai  
- Xưởng 2: Long Phước Long Thành Đồng Nai

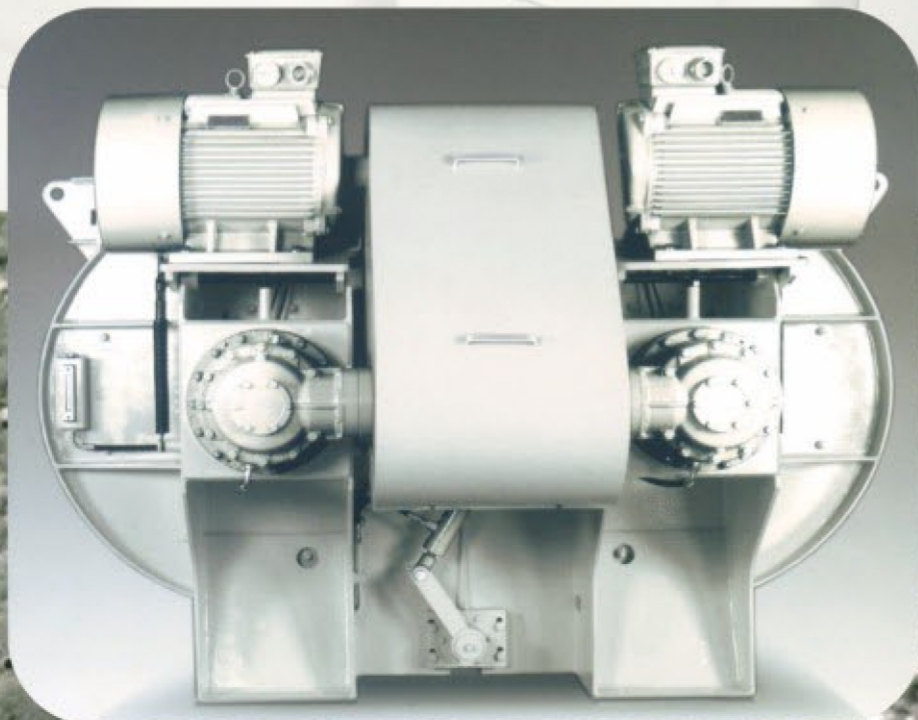
Website: [www.toannanggroup.com.vn](http://www.toannanggroup.com.vn)

Hotline: 0933657345 - Email: [Trunghieu@toannanggroup.com](mailto:Trunghieu@toannanggroup.com)





Peritiae credite





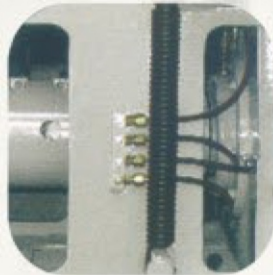
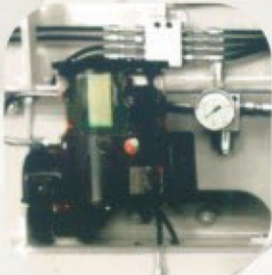
# Attention for details

- Wide service inspection ports provide an adequate view and access to the mixer.
  - Spacious cover for a proper distribution of inlets.
  - Drive motors mounted on a cradle to maintain belt tensioning.
- Different water distribution systems designed for an efficient dispersion of water according to the materials used.
- Shaft bearings are separated from the shaft seals thus simplifying maintenance.

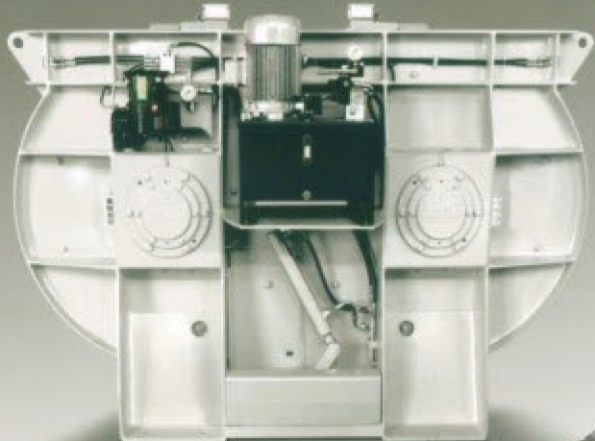
Incorporated automatic and manual centralized lubrication system connected to all main ports.

Hydraulic unit .For a reliable opening/closing of the discharge gate, manual pump for emergency situations.

Labyrinth seals safeguard the shafts; with its unique design, reliability has been increased.



Compact design  
Easy installation  
Easy transport  
Simplifies retrofitting





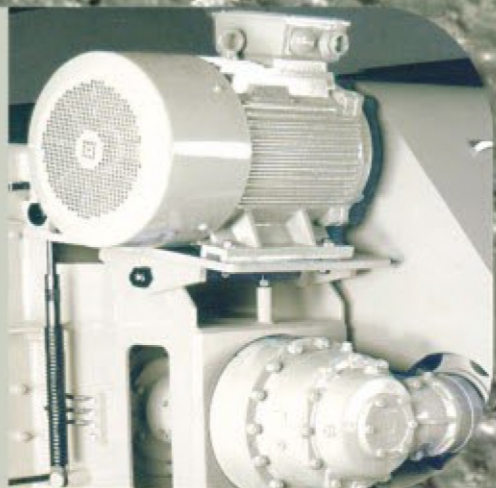
## Easy maintenance



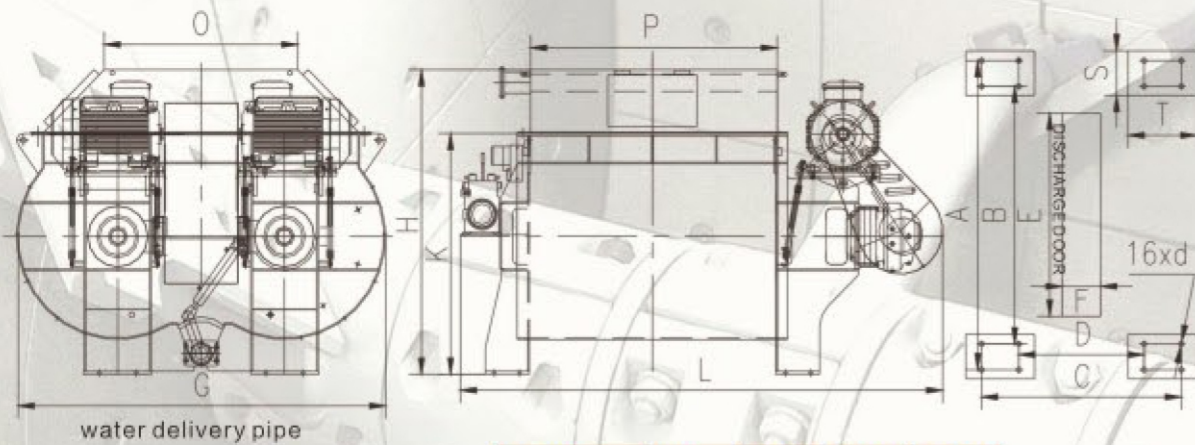
Mixing blades dig gently, harmoniously but efficiently into the concrete with synchronized and coordinated movements for a higher homogeneity and lower power consumption. Specially designed arms together with the unique reversible mixing blades create an ideal condition for horizontal and circular movement of the mix. Hexagonal mixing shafts for a spiral profile blades position, claimed to be the most effective for concrete mixing and homogeneity.

## High efficiency

Planetary gears for high efficiency.  
Self-tensioning drive belts to reduce maintenance, accidental and unnecessary loads on the gearboxes.







MODEL	d	D1	D2	D3
ETS2000	22	114	205	180
ETS2250	22	114	205	180
ETS2500	22	114	205	180
ETS3000	26	141	240	207
ETS3750	26	141	240	207
ETS4500	26	141	240	207

## DIMENSION

MODEL	A	B	C	D	E	F	G	H	K	L	O	P	S	T
ETS2000	1690	1370	1220	660	1080	220	2040	1800	1350	2575	1150	1250	260	396
ETS2250	1690	1370	1220	660	1080	220	2040	1800	1350	2575	1150	1250	260	396
ETS2500	2096	1776	1220	660	1485	220	2040	1800	1350	2950	1150	1660	260	396
ETS3000	2210	1870	1370	870	1581	300	2480	2170	1650	3400	1300	1740	290	470
ETS3750	2210	1870	1370	870	1581	300	2480	2170	1650	3400	1300	1740	290	470
ETS4500	2700	2360	1370	870	2070	300	2480	2170	1650	3890	1300	2210	290	470

## TECHNICAL SPECIFICATION

SPECIFICATION	LOADING	COMPACTED	POWER	SHAFT SPEED	MIXING BLADES	WEIGHT
MODEL	(L)	(L)	(KW)	(r/min)	(pcs)	(T)
ETS2000	1500	1000	2X18.5	24.3	12	5.1
ETS2250	1875	1250	2X22	24.3	12	5.3
ETS2500	2500	1500	2X30	24.3	16	5.8
ETS3000	3000	2000	2X37	27	16	7.6
ETS3750	3750	2500	2X45	27	16	7.9
ETS4500	4500	3000	2X55	27	20	9.7





WORKSHOP



OUR APPLICATION

## THÔNG TIN LIÊN HỆ

### **CÔNG TY TNHH ĐẦU TƯ VÀ PT KT TOÀN NĂNG**

- Vp: 76/6 Đường số 5 P. Linh Xuân Tp. Thủ Đức Tp. HCM

Địa chỉ: - Showroom: 99 Lê Văn Tám Dĩ An Bình Dương

- Xưởng 1: Long Bình Biên Hòa Đồng Nai

- Xưởng 2: Long Phước Long Thành Đồng Nai

Website: [www.toannanggroup.com.vn](http://www.toannanggroup.com.vn)

Hotline: 0933657345 - Email: [Trunghieu@toannanggroup.com](mailto:Trunghieu@toannanggroup.com)

