

## A89 gPV 1500 VDC Fuse 10x57 mm



### FEATURES:

- 1500 VDC, 10x57 mm PV fuse link with glass-fiber
- Rated Current: 1-20 A
- Rated Breaking Capacity: 30 kA at 1500 VDC
- Time Constant: 1-3 ms
- Special design with silver plated caps for high-power PV applications
- Approvals: UL 248-19 (File: E490190)
- Comply to: IEC 60269-6/GBT 13539.6
- Customizable for special applications

### ELECTRICAL SPECIFICATIONS

Part Number		Rated Current	Ampere Code	Breaking Capacity	Nom Cold Resistance (mΩ)	I <sup>2</sup> t (A <sup>2</sup> s)		Dissipation (W) 1.0 In	Certifications UL
10/12 AWG In-terminal	8 AWG In-terminal					Pre-Arcing	Total		
A891100b00	A891100b04	1 A	1100	30 kA@1500 VDC	1046	10	33.3	0.4	●
A891200b00	A891200b04	2 A	1200		255	20	66.7	0.7	●
A891300b00	A891300b04	3 A	1300		166	30	100.0	1.1	●
A891400b00	A891400b04	4 A	1400		97.3	40	133.3	1.4	●
A891500b00	A891500b04	5 A	1500		73.5	50	166.7	1.8	●
A891600b00	A891600b04	6 A	1600		50.3	60	200.0	2.1	●
A891800b00	A891800b04	8 A	1800		38.6	80	266.7	2.8	●
A892100b00	A892100b04	10 A	2100		19.13	100	333.3	3.5	●
A892120b00	A892120b04	12 A	2120		11.66	120	400.0	4.2	●
A892150b00	A892150b04	15 A	2150		9.16	150	500.0	5.3	●
A892160b00	A892160b04	16 A	2160		8.85	160	533.3	5.6	●
A892200b00	A892200b04	20 A	2200		6.62	200	666.7	7.0	●

Part Number		Rated Current	Ampere Code	Breaking Capacity	Nom Cold Resistance (mΩ)	I <sup>2</sup> t (A <sup>2</sup> s)		Dissipation (W) 1.0 In	Certifications UL
Cartridge	PCB Mount					Pre-Arcing	Total		
A891100b01	A891100b02	1 A	1100	30 kA@1500 VDC	1046	10	33.3	0.4	○
A891200b01	A891200b02	2 A	1200		255	20	66.7	0.7	○
A891300b01	A891300b02	3 A	1300		166	30	100.0	1.1	○
A891400b01	A891400b02	4 A	1400		97.3	40	133.3	1.4	○
A891500b01	A891500b02	5 A	1500		73.5	50	166.7	1.8	○
A891600b01	A891600b02	6 A	1600		50.3	60	200.0	2.1	○
A891800b01	A891800b02	8 A	1800		38.6	80	266.7	2.8	○
A892100b01	A892100b02	10 A	2100		19.13	100	333.3	3.5	○
A892120b01	A892120b02	12 A	2120		11.66	120	400.0	4.2	○
A892150b01	A892150b02	15 A	2150		9.16	150	500.0	5.3	○
A892160b01	A892160b02	16 A	2160		8.85	160	533.3	5.6	○
A892200b01	A892200b02	20 A	2200		6.62	200	666.7	7.0	○

**Note:** (1) Typical pre-arcing I<sup>2</sup>t measured at 10\*In current

**TIME VS CURRENT CHARACTERISTIC**

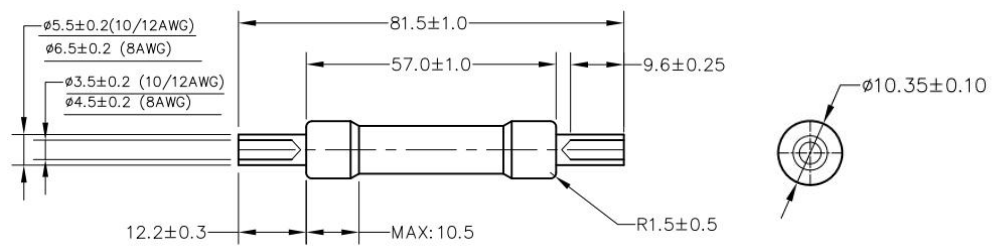
Rated Current	100 %	135 %	200 %
1-20 A	Temperature Stabilization	<1 h	<4 min

**APPLICATIONS:**

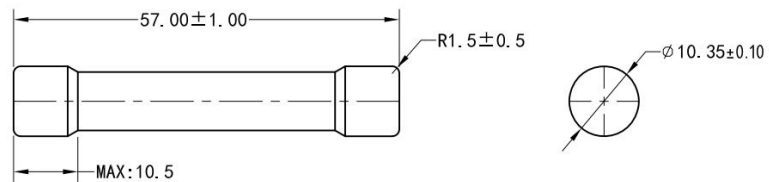
- PV combiner/ junction boxes
- Inverters
- Battery Charge Controllers

**DIMENSIONS (mm)**

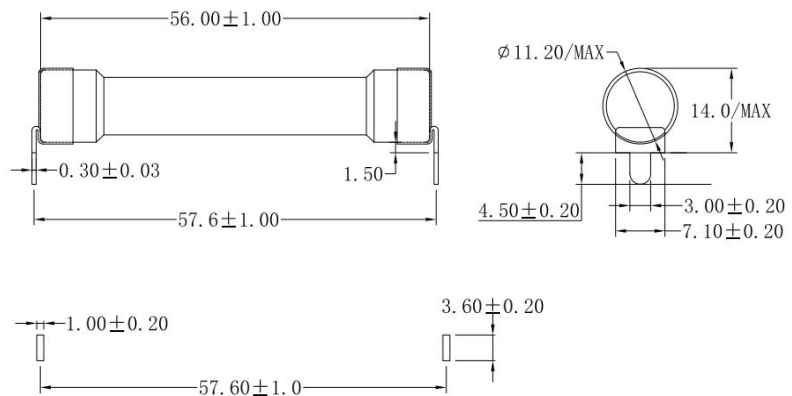
**A89xxxxb00**  
**A89xxxxb04**



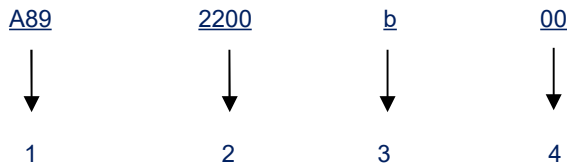
**A89xxxxb01**



**A89xxxxb02**



**PART NUMBER SYSTEM**



- 1 .....Product Series .....A89
- 2 .....Ampere Code .....20 A (see ampere code column of electrical specifications)
- 3 .....Rated Voltage .....b: 1500 V
- 4 .....Supplementary Code .....00:10/12 AWG In-terminal ; 01: Cartridge ; 02: PCB Mount ;  
04: 8 AWG In-terminal

**Time Current Curve (reference)**

**Average Current Curve(I-T Curve)**

