

A75 / A78 gPV 1500 VDC Fuse 10x85 mm



FEATURES:

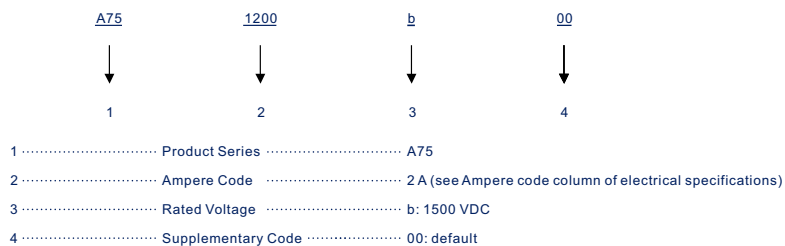
- 1500 VDC, 10x85 mm PV fuse link
- Rated Current: 2-30 A
- Rated Breaking Capacity: 30 kA at 1500 VDC
- Time Constant: ≤ 1 ms
- Special design for high-power PV applications
- Standards: UL 248-19
- Approvals: UL (File: E490190)
- BH300 Holder for DIN rail mounting

ELECTRICAL SPECIFICATIONS

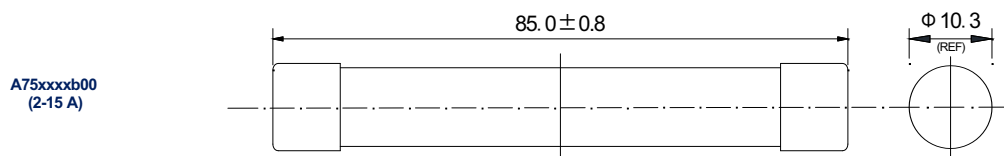
Part Number		Rated Current	Ampere Code	Breaking Capacity	I ² t (A ² s)		Dissipation (W)		Certifications
Cartridge	10/12 AWG In-Line				Pre-Arcing	Total	0.8 I _n	1.0 I _n	UL
A751200b00	A781200b00	2 A	1200	30 kA@1500 VDC	3.5	10	1.45	2.6	•
A751400b00	A781400b00	4 A	1400		15	50	1.55	2.8	•
A752100b00	A782100b00	10 A	2100		300	1100	2.3	4.2	•
A752120b00	A782120b00	12 A	2120		20	60	2.4	4.2	•
A752150b00	A782150b00	15 A	2150		35	95	2.8	5.0	•
A752200b00	A782200b00	20 A	2200		115	820	3.3	6.2	•
A752250b00	A782250b00	25 A	2250		175	1300	4	5.7	•
A752300b00	A782300b00	30 A	2300		241	1950	4.5	7.5	•

Note: (1) Typical pre-arcing I²t measured at 10*I_n current

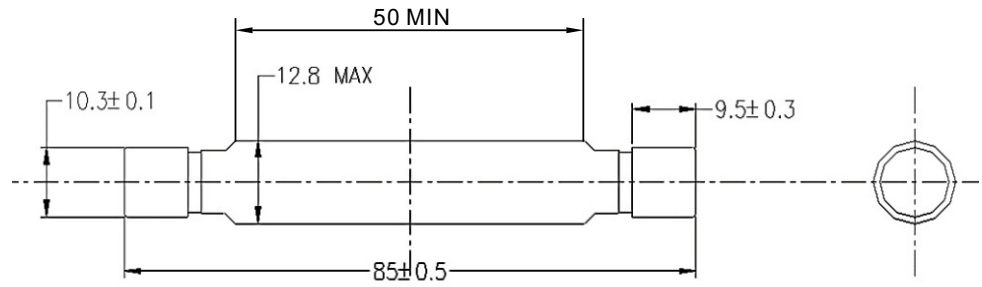
PART NUMBER SYSTEM



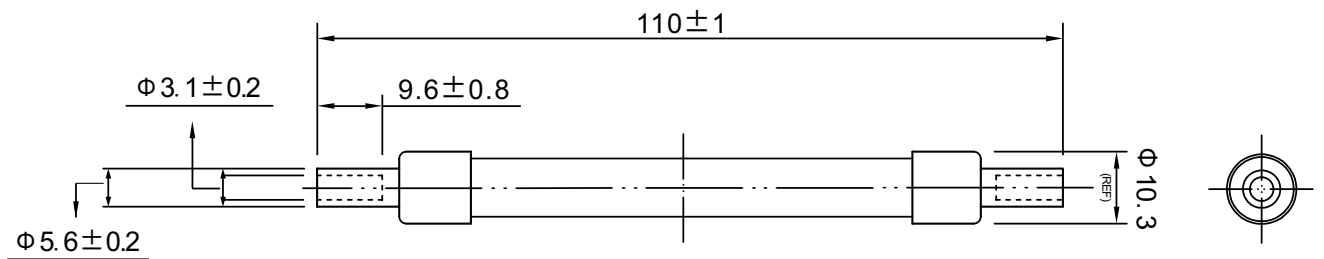
DIMENSIONS (mm)



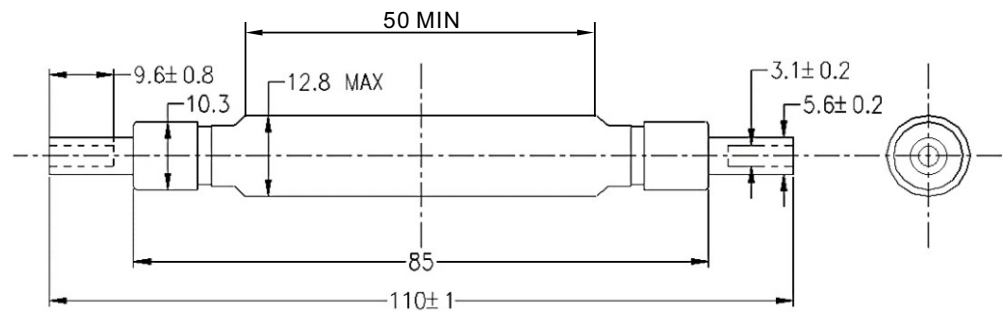
A75xxxxb00
(20/25/30 A)



A78xxxxb00
(2-15 A)



A78xxxxb00
(20/25/30 A)



TIME VS CURRENT CHARACTERISTIC

Rated Current	100 %	135 %	200 %
2-30 A	>4 h	< 1 h	< 4 min

TIME CURRENT CURVE

