



Royal House

2022 QUARTZ STONE

COLLECTIONS

CALACATTA • SAVANA • MARBLE



ROYAL GROUP

www.royalceramic.vn





Royal House

ABOUT US – ROYAL HOUSE

Royal House is the American trading development in the United States of the Royal Group, One of the tops Manufacturing & trading companies in the Ceramic Tiles & quartz stone industry in Vietnam.

Royal Group was established in 2001. We have already celebrated a milestone of 22 years and are proud of this achievement – a lively illustration of Royal Group’s ability to evolve and provide our customers with the quality of products and services they require.

Customer service is at the heart of everything we do. The company operates from the head office & factory facilities in Vietnam. We have created a wide range of quartz stone and tile products, which are readily available for quick delivery at customers’ requests.

We are not only quartz stone specialists but solution specialists providing trade customers with a wide product assortments needed for a successful commercial and domestic projects.

Over the last few years we have established ourselves as one of the efficient distributors in the United States, extending our trade coverage from the four trading US-based companies across all the regions in the country.

We are here to serve to be your long-term partner with commitment.



INDEX

2022 QUARTZ STONE

A SELECTION OF OUR
NEWEST RANGES

COLLECTIONS

CALACATTA

PAGE 08

CALACATTA GOLD

PAGE 40

CALACATTA GOLD SPECIAL

PAGE 48

SAVANA

PAGE 58

MARBLE

PAGE 68

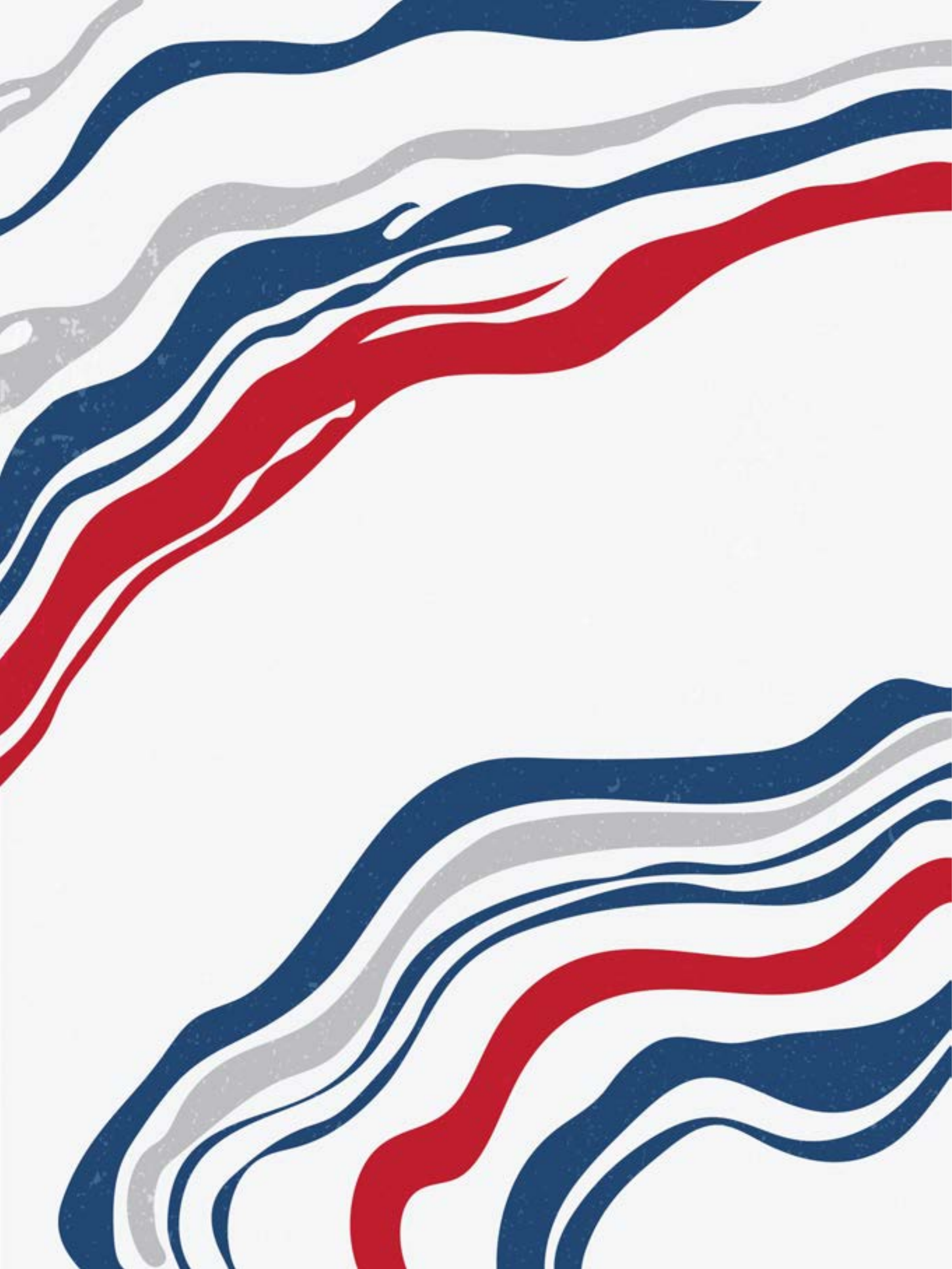
PORTFOLIO

PAGE 76

TECHNICAL CERTIFICATIONS

PAGE 79





**THE QUARTZ
QUALITY FROM
VIETNAM**

“

YOUR PARTNER FROM VIETNAM

CALACATTA

INDULGED IN THE ITALIAN TOUCH OF NATURE

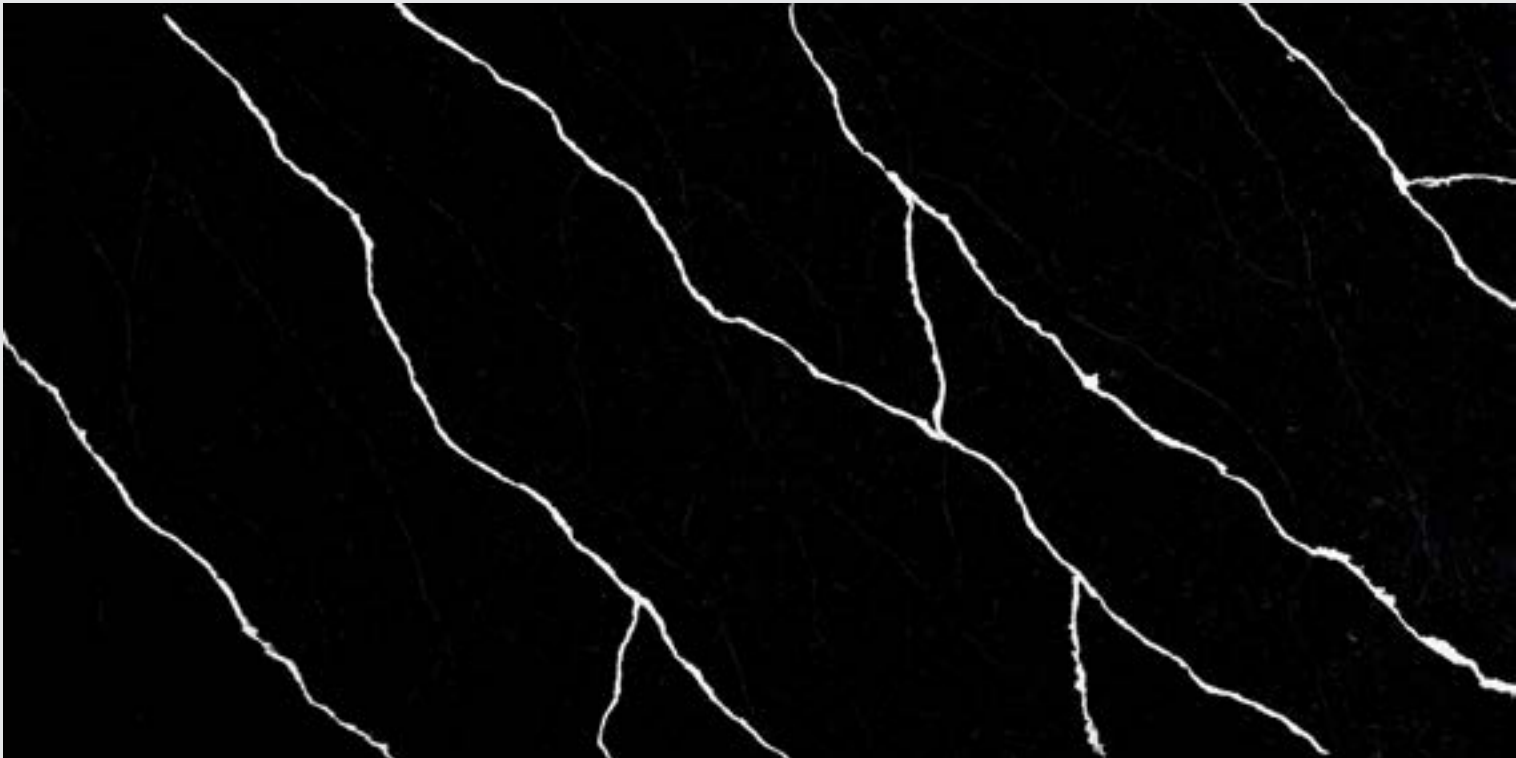


“Inspired by the famous natural stone of the Carrara region in Italy, the Royal Stone Calacatta Collection, characterized by delicate, bright and glossy surface, exposes the beauty to which marble lines cannot compare.

The Calacatta Collection for a sophisticated choice to renovate extravagant hotels, spacious shopping malls, or any other exclusive locations.”

ROYAL HOUSE / CALACATTA





CALACATTA | RSC3036
 Size | 3200x1600mm (126"x36")



SLAB SIZE AVAILABLE					
PREFAB SIZE	108*26	108*36	108*42	108*52	INCHES
SLAB STANDARD THICKNESS	2cm	3cm			
JUMBO SLAB	1600*3200MM	63*126	INCHES	1.6*3.2	METERS
SUPER JUMBO SLAB	2000*3500MM	78*137	INCHES	2.0*3.5	METERS
FINISH	POLISHED				

“

“Dark and dreamy surface offer a boldness that inspires a calm welcoming atmosphere, making it more unique and creating a one-of-a-kind space with this background”





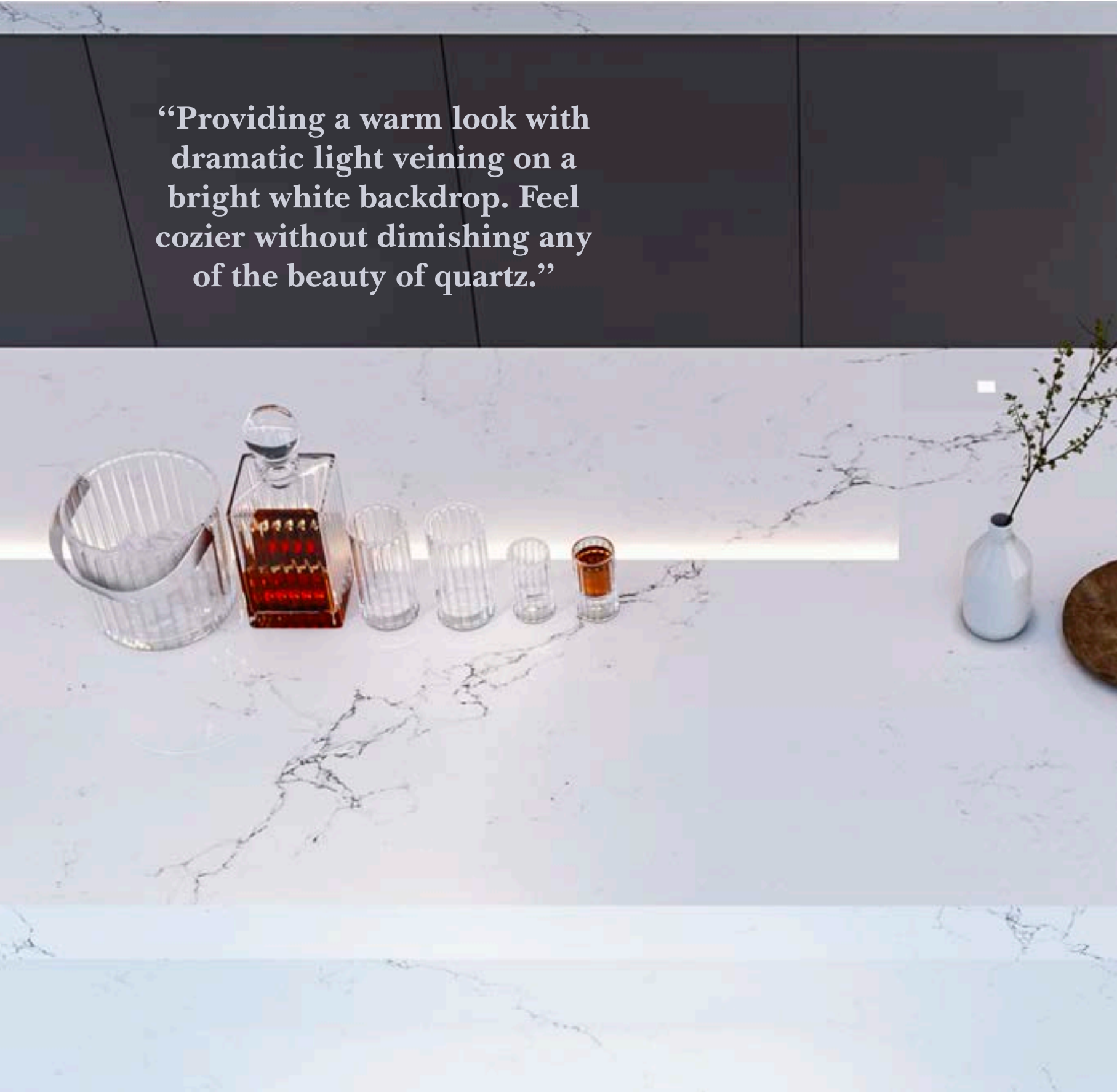
ROYAL HOUSE / CALACATTA



CALACATTA | RSC3040
Size | 3200x1600mm (126"x36")



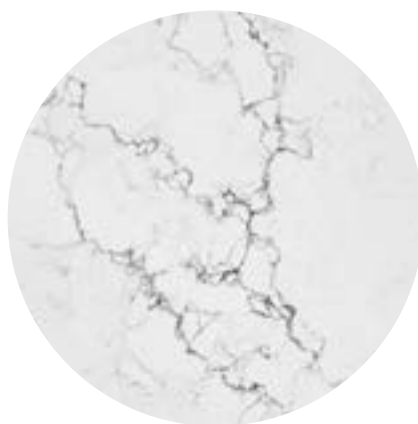
“Providing a warm look with dramatic light veining on a bright white backdrop. Feel cozier without diminishing any of the beauty of quartz.”



ROYAL HOUSE / CALACATTA



SLAB SIZE AVAILABLE					
PREFAB SIZE	108*26	108*36	108*42	108*52	INCHES
SLAB STANDARD THICKNESS	2cm	3cm			
JUMBO SLAB	1600*3200MM	63*126	INCHES	1.6*3.2	METERS
SUPER JUMBO SLAB	2000*3500MM	78*137	INCHES	2.0*3.5	METERS
FINISH	POLISHED				



CALACATTA | RSC3040
 Size | 3200x1600mm (126"x36")



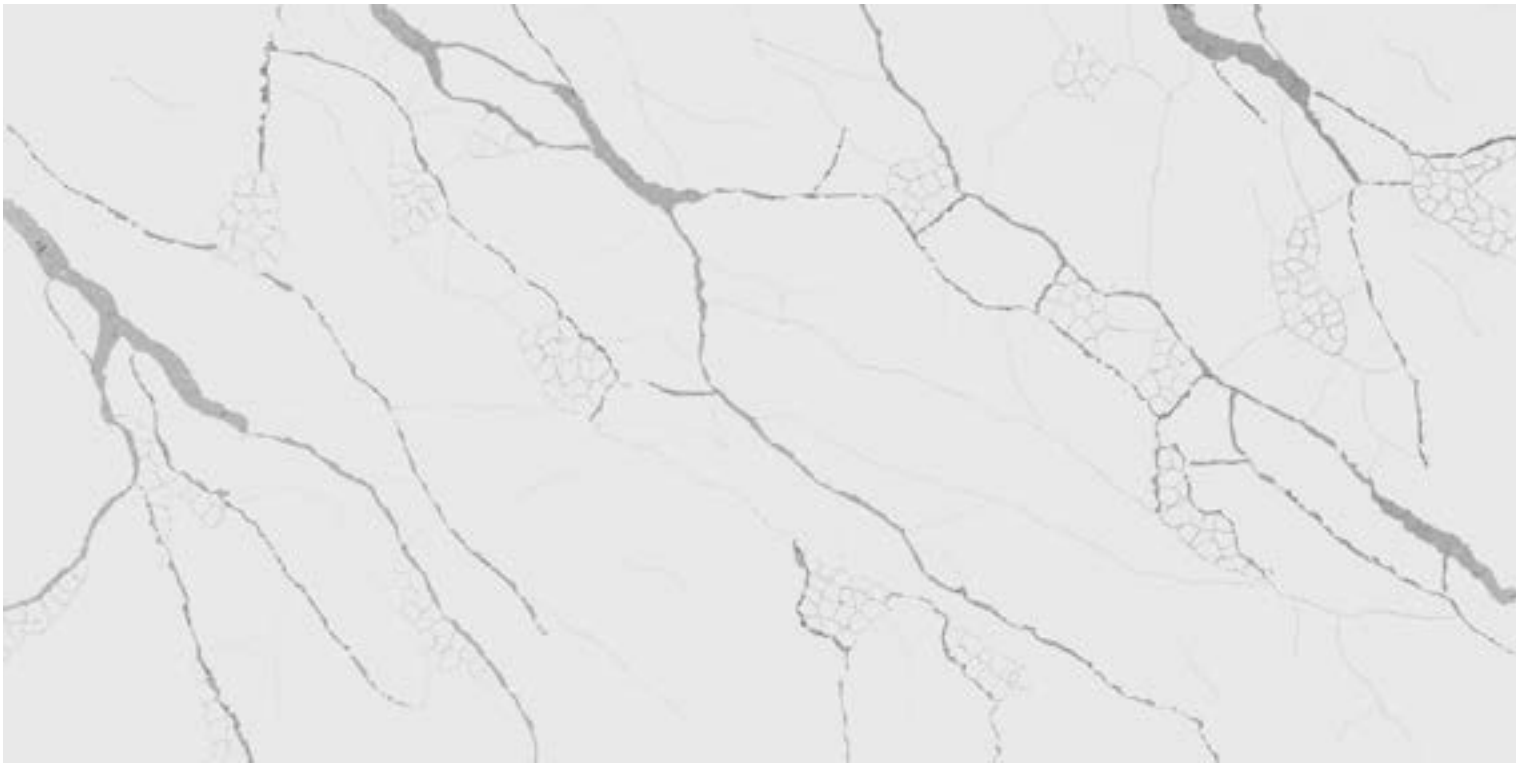
ROYAL HOUSE / CALACATTA



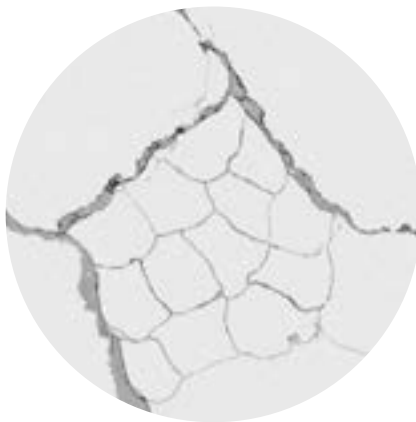
SLAB SIZE AVAILABLE					
PREFAB SIZE	108*26	108*36	108*42	108*52	INCHES
SLAB STANDARD THICKNESS	2cm	3cm			
JUMBO SLAB	1600*3200MM	63*126	INCHES	1.6*3.2	METERS
SUPER JUMBO SLAB	2000*3500MM	78*137	INCHES	2.0*3.5	METERS
FINISH	POLISHED				



CALACATTA | RSC3051
Size | 3200x1600mm (126"x36")



SLAB SIZE AVAILABLE					
PREFAB SIZE	108*26	108*36	108*42	108*52	INCHES
SLAB STANDARD THICKNESS	2cm	3cm			
JUMBO SLAB	1600*3200MM	63*126	INCHES	1.6*3.2	METERS
SUPER JUMBO SLAB	2000*3500MM	78*137	INCHES	2.0*3.5	METERS
FINISH	POLISHED				



CALACATTA | RSC4052
 Size | 3200x1600mm (126"x36")

ROYAL HOUSE / CALACATTA





ROYAL HOUSE / CALACATTA

“Creating the contrasting
vibe but with a more subtle
twist. The added texture
provides a space with
additional depth dimension
on the premium surfaces.”



CALACATTA | RSC2012
Size | 3200x1600mm (126"x36")

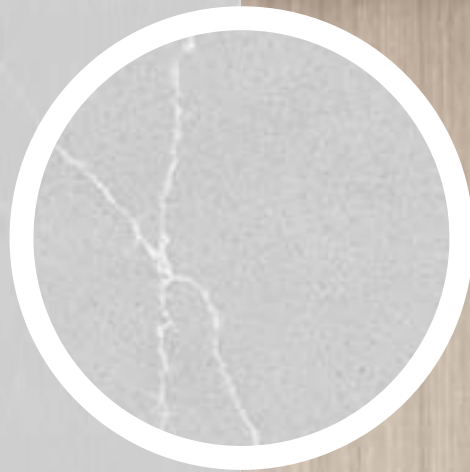




SLAB SIZE AVAILABLE				
PREFAB SIZE	108*26	108*36	108*42	108*52 INCHES
SLAB STANDARD THICKNESS	2cm	3cm		
JUMBO SLAB	1600*3200MM	63*126 INCHES	1.6*3.2 METERS	
SUPER JUMBO SLAB	2000*3500MM	78*137 INCHES	2.0*3.5 METERS	
FINISH	POLISHED			



CALACATTA | RSC2012
 Size | 3200x1600mm (126"x36")



SLAB SIZE AVAILABLE

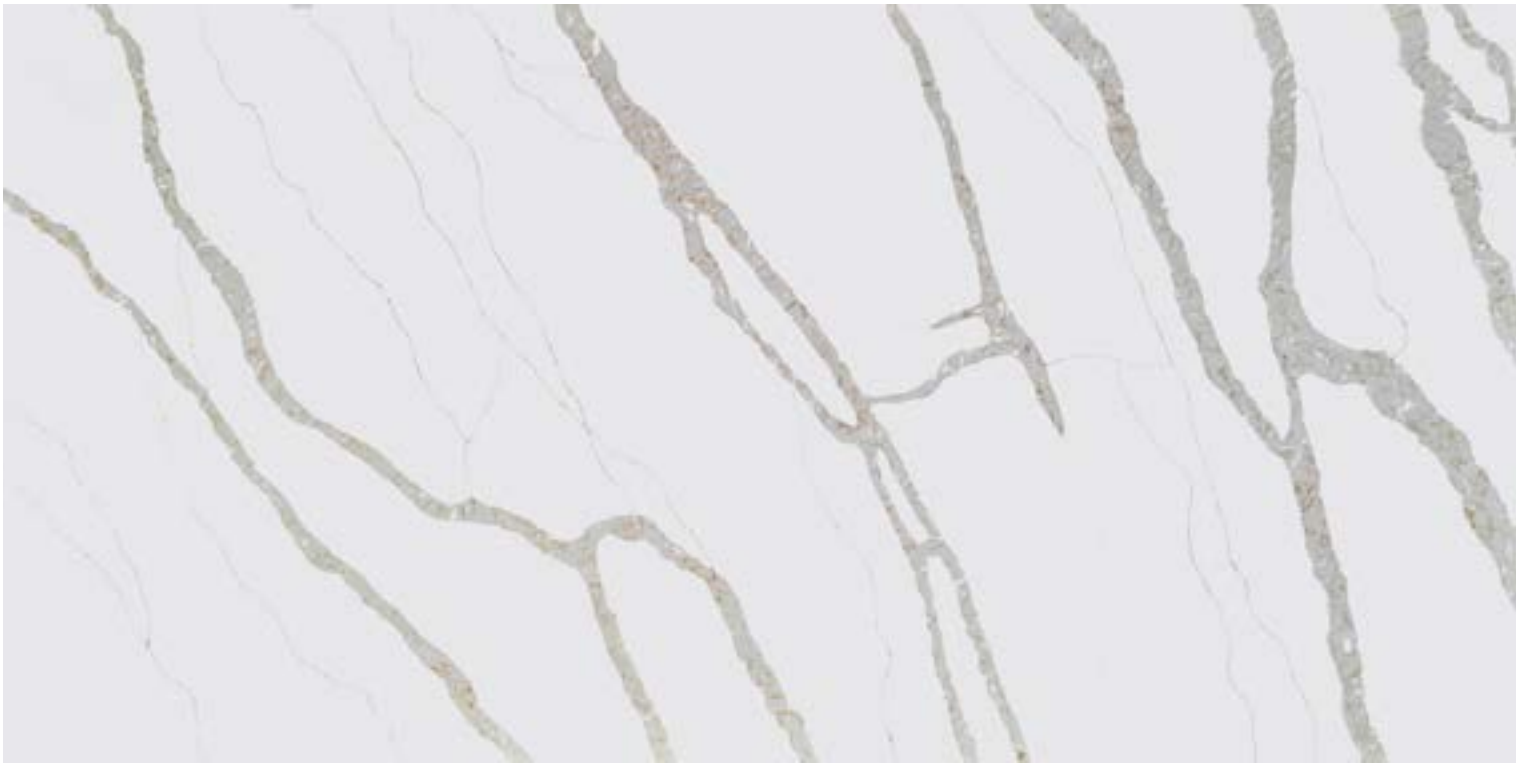
PREFAB SIZE	108*26	108*36	108*42	108*52	INCHES
SLAB STANDARD THICKNESS	2cm	3cm			
JUMBO SLAB	1600*3200MM	63*126	INCHES	1.6*3.2	METERS
SUPER JUMBO SLAB	2000*3500MM	78*137	INCHES	2.0*3.5	METERS
FINISH	POLISHED				



CALACATTA | RSC2008
Size | 3200x1600mm (126"x36")

ROYAL HOUSE / CALACATTA





SLAB SIZE AVAILABLE					
PREFAB SIZE	108*26	108*36	108*42	108*52	INCHES
SLAB STANDARD THICKNESS	2cm	3cm			
JUMBO SLAB	1600*3200MM	63*126	INCHES	1.6*3.2	METERS
SUPER JUMBO SLAB	2000*3500MM	78*137	INCHES	2.0*3.5	METERS
FINISH	POLISHED				



CALACATTA | RSC3062
 Size | 3200x1600mm (126"x36")



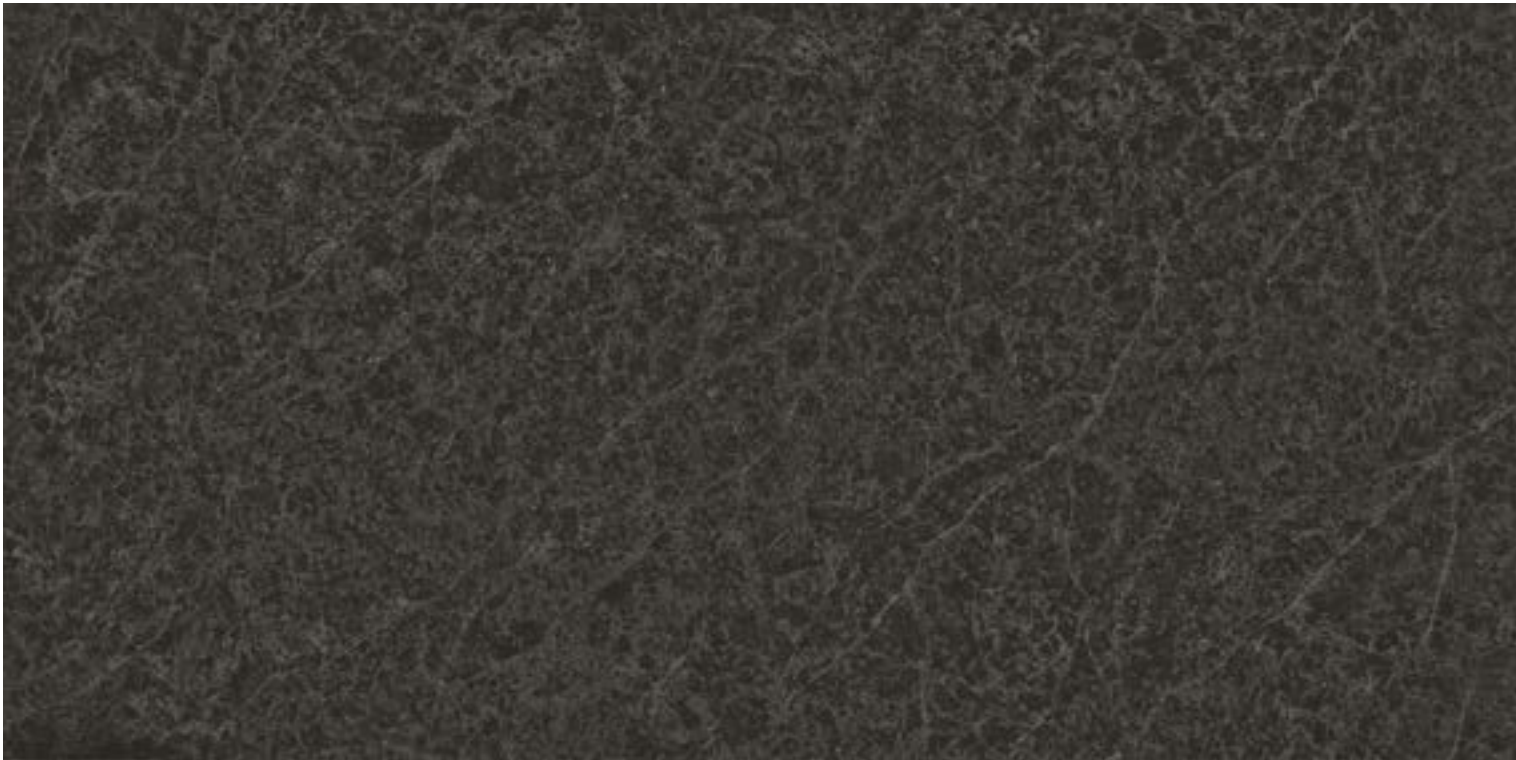


SLAB SIZE AVAILABLE					
PREFAB SIZE	108*26	108*36	108*42	108*52	INCHES
SLAB STANDARD THICKNESS	2cm	3cm			
JUMBO SLAB	1600*3200MM	63*126	INCHES	1.6*3.2	METERS
SUPER JUMBO SLAB	2000*3500MM	78*137	INCHES	2.0*3.5	METERS
FINISH	POLISHED				



CALACATTA | RSC3011
 Size | 3200x1600mm (126"x36")





SLAB SIZE AVAILABLE					
PREFAB SIZE	108*26	108*36	108*42	108*52	INCHES
SLAB STANDARD THICKNESS	2cm	3cm			
JUMBO SLAB	1600*3200MM	63*126	INCHES	1.6*3.2	METERS
SUPER JUMBO SLAB	2000*3500MM	78*137	INCHES	2.0*3.5	METERS
FINISH	POLISHED				



CALACATTA | RSC3025
 Size | 3200x1600mm (126"x36")

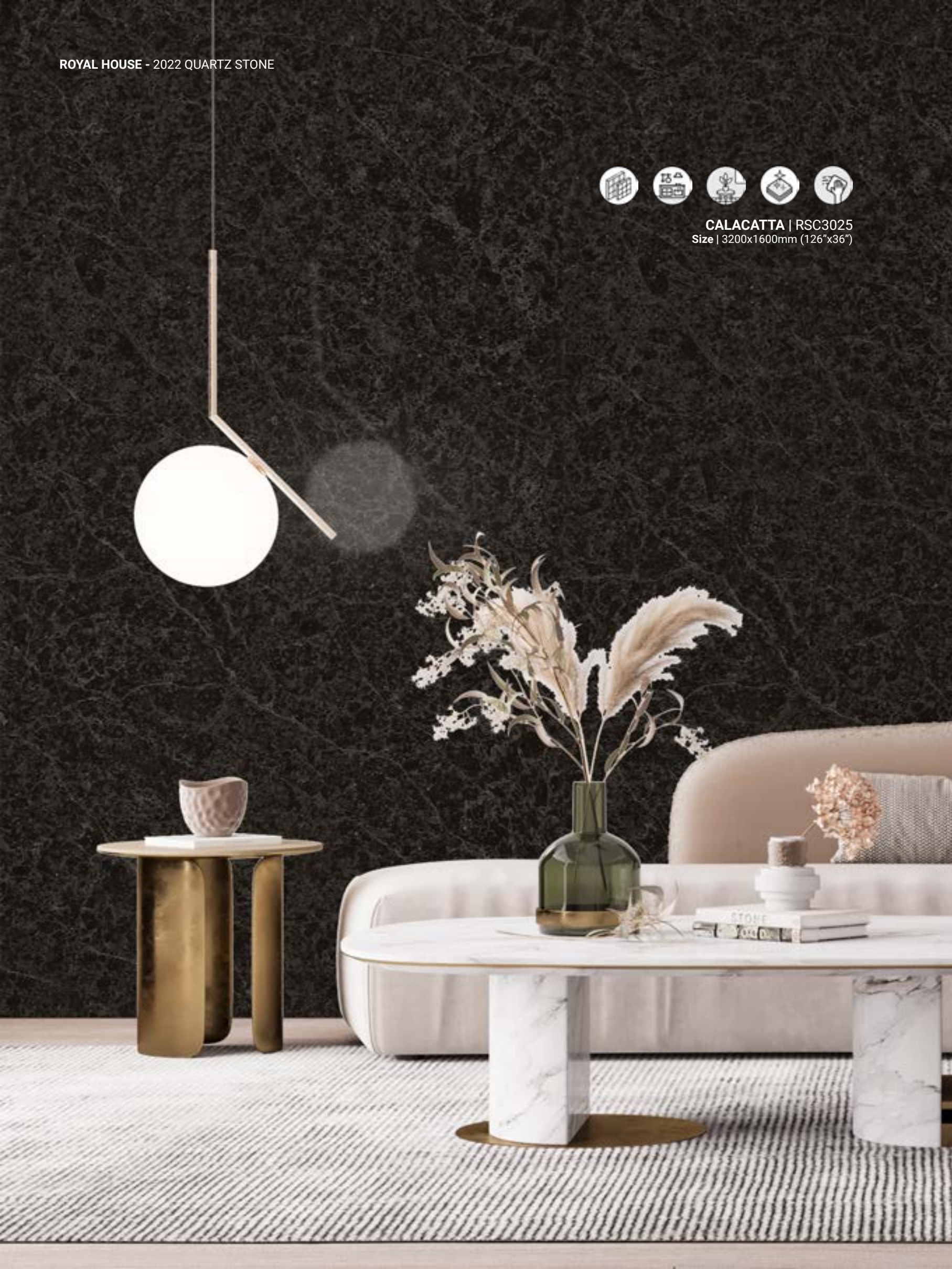
ROYAL HOUSE / CALACATTA



ROYAL HOUSE - 2022 QUARTZ STONE



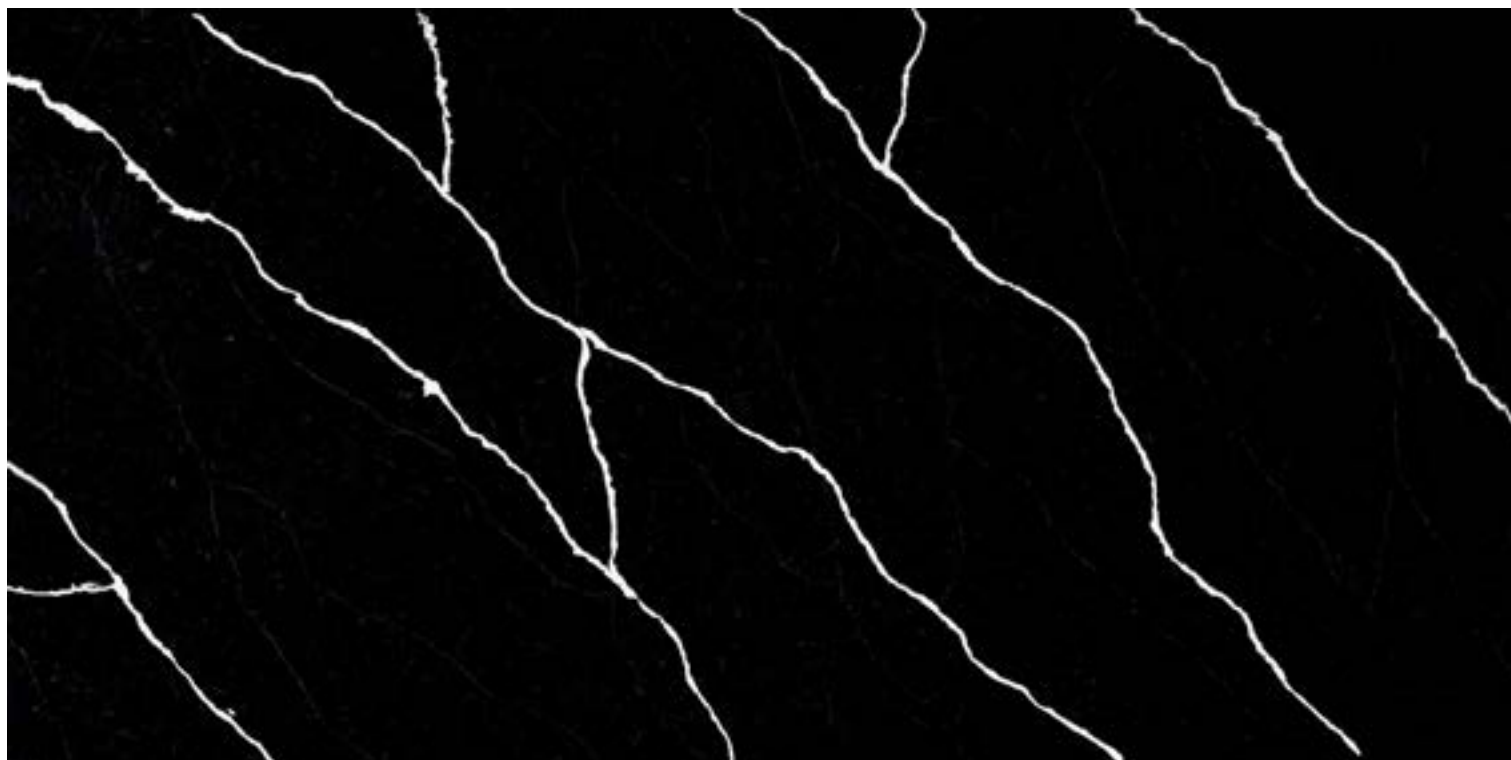
CALACATTA | RSC3025
Size | 3200x1600mm (126"x36")



ROYAL HOUSE / CALACATTA



INDULGED IN THE ITALIAN TOUCH OF NATURE / OVERALL COLLECTION



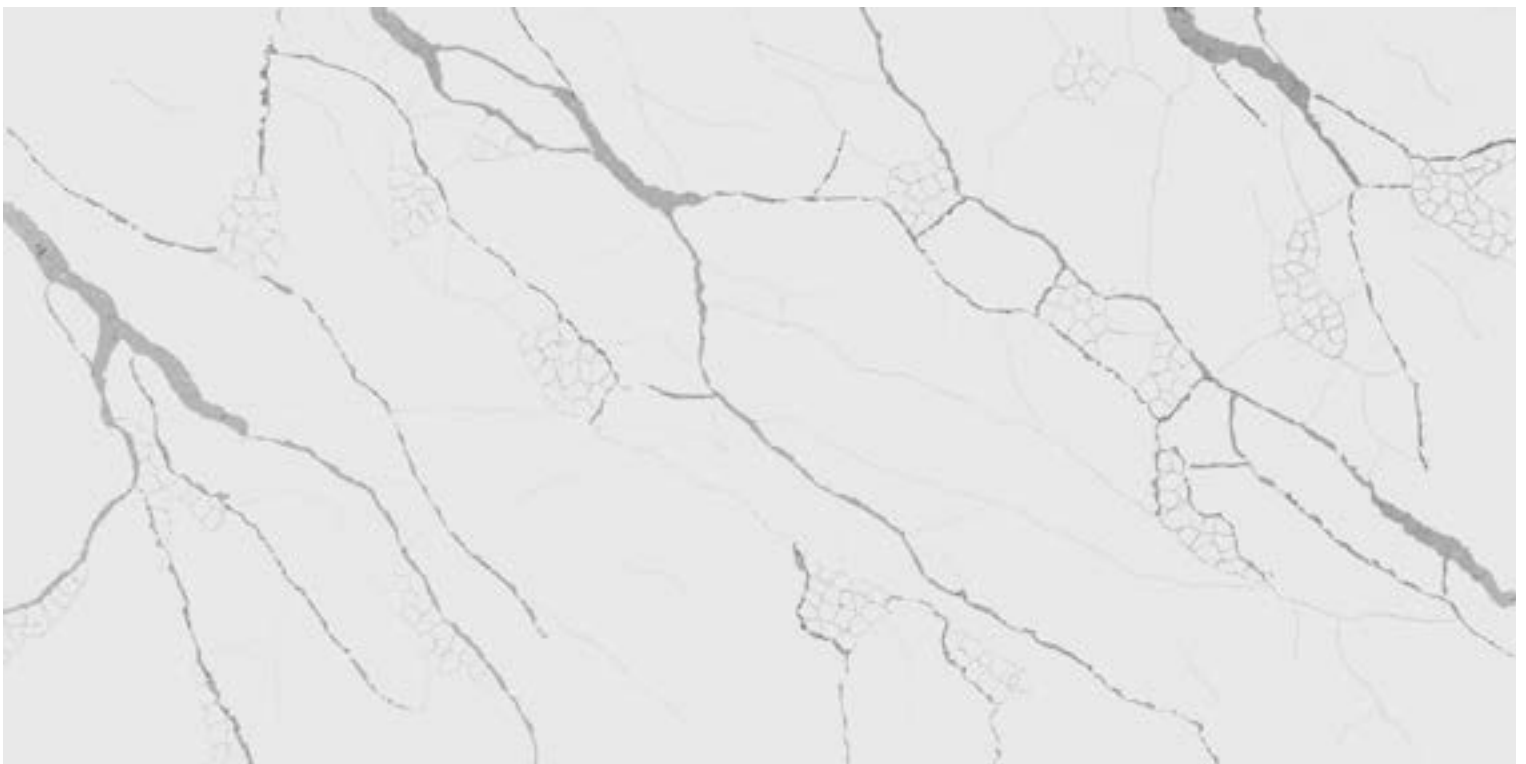
CALACATTA | RSC3036
Size | 3200x1600mm (126"x36")



CALACATTA | RSC3040
Size | 3200x1600mm (126"x36")

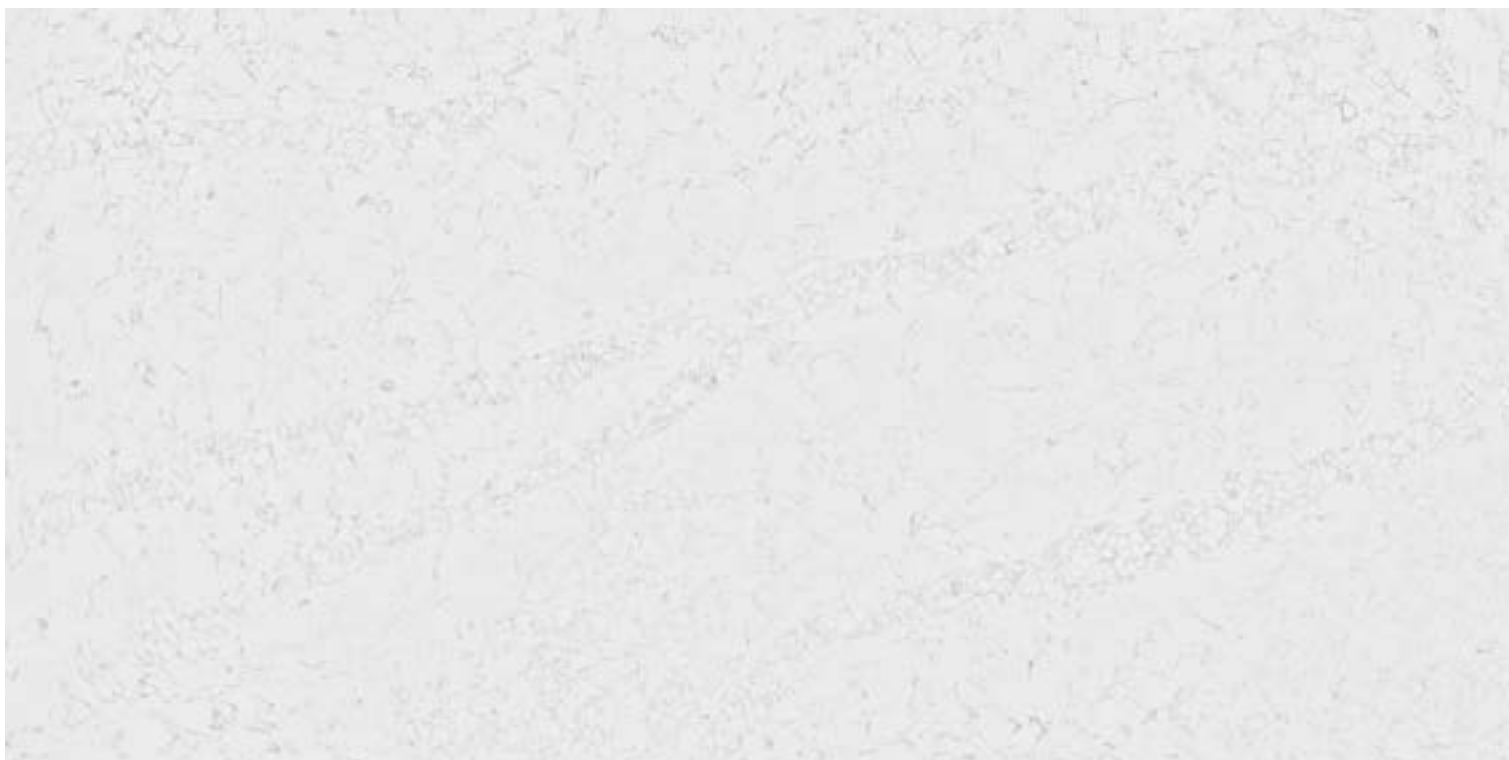


CALACATTA | RSC3051
Size | 3200x1600mm (126"x36")



CALACATTA | RSC4052
Size | 3200x1600mm (126"x36")

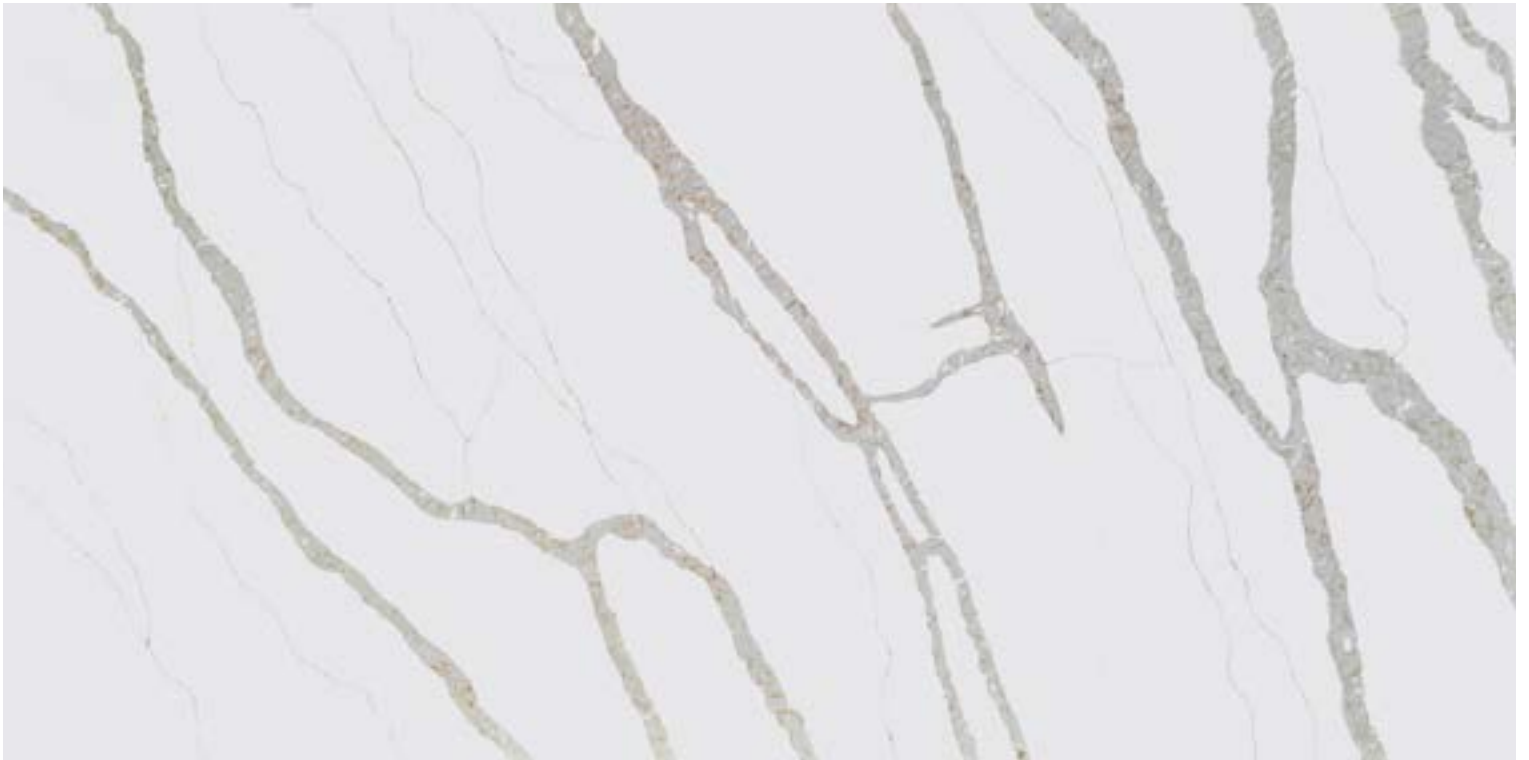
INDULGED IN ITALIAN TOUCH OF NATURE / OVERALL COLLECTION



CALACATTA | RSC2012
Size | 3200x1600mm (126"x36")



CALACATTA | RSC2008
Size | 3200x1600mm (126"x36")

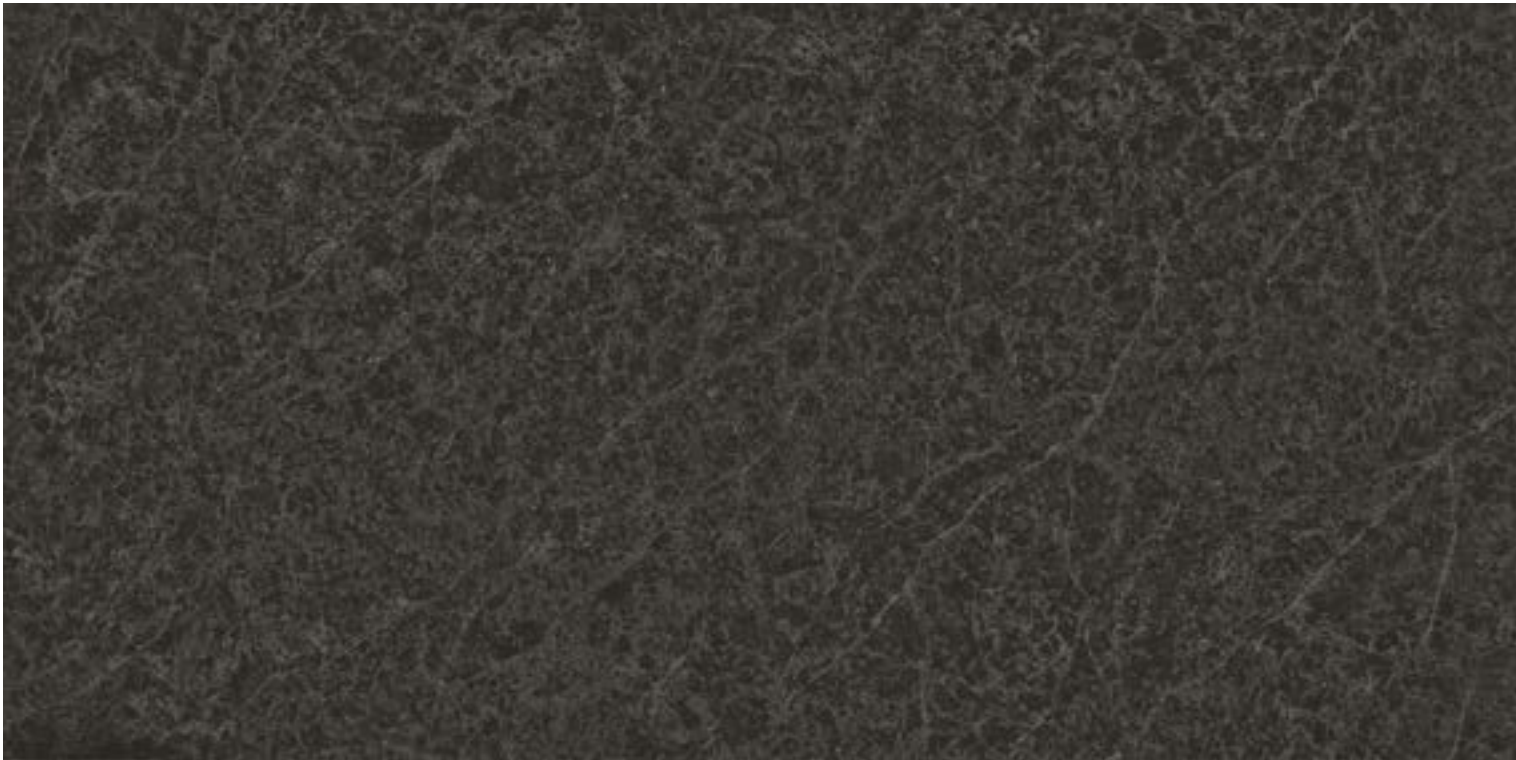


CALACATTA | RSC3062
Size | 3200x1600mm (126"x36")



CALACATTA | RSC3011
Size | 3200x1600mm (126"x36")

INDULGED IN ITALIAN TOUCH OF NATURE / OVERALL COLLECTION

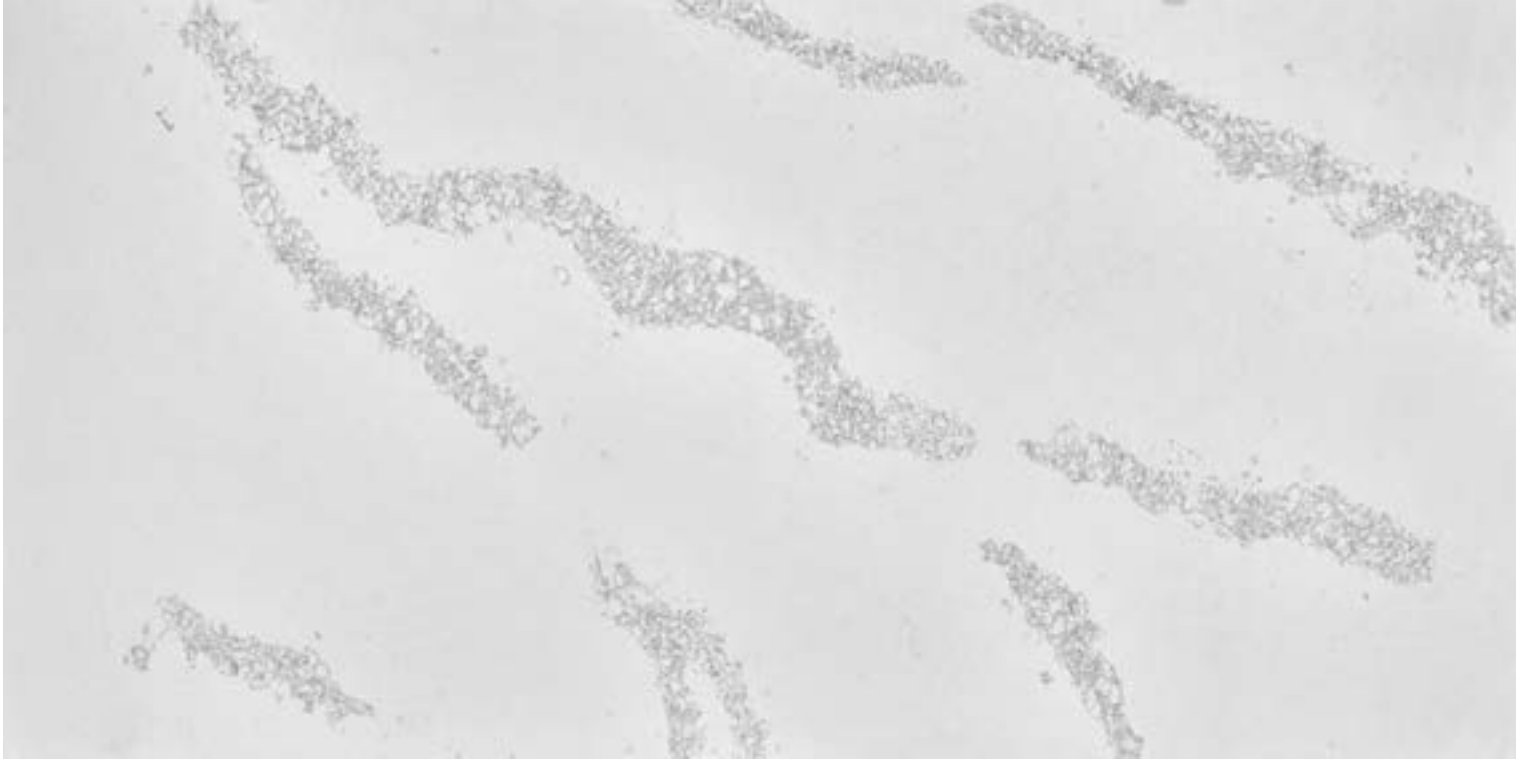


CALACATTA | RSC3025
Size | 3200x1600mm (126"x36")



CALACATTA | RSC2026
Size | 3200x1600mm (126"x36")

ROYAL HOUSE / CALACATTA



CALACATTA | RSC3045
Size | 3200x1600mm (126"x36")

SLAB SIZE AVAILABLE					
PREFAB SIZE	108*26	108*36	108*42	108*52	INCHES
SLAB STANDARD THICKNESS	2cm	3cm			
JUMBO SLAB	1600*3200MM	63*126	INCHES	1.6*3.2	METERS
SUPER JUMBO SLAB	2000*3500MM	78*137	INCHES	2.0*3.5	METERS
FINISH	POLISHED				



**“Calacatta Gold
offers gold veining that interleaves
white veining on the surface,
forming a unique presentation.”**

ROYAL HOUSE / CALACATTA GOLD





CALACATTA | RSC3024
Size | 3200x1600mm (126"x36")

INSPIRATION FROM NATURE

“

ALL ART IS BUT IMITATION
OF NATURE.

Seneca -

ROYAL HOUSE / CALACATTA GOLD



SLAB SIZE AVAILABLE				
PREFAB SIZE	108*26	108*36	108*42	108*52 INCHES
SLAB STANDARD THICKNESS	2cm	3cm		
JUMBO SLAB	1600*3200MM	63*126 INCHES	1.6*3.2 METERS	
SUPER JUMBO SLAB	2000*3500MM	78*137 INCHES	2.0*3.5 METERS	
FINISH	POLISHED			



ROYAL HOUSE / CALACATTA GOLD



SLAB SIZE AVAILABLE					
PREFAB SIZE	108*26	108*36	108*42	108*52	INCHES
SLAB STANDARD THICKNESS	2cm	3cm			
JUMBO SLAB	1600*3200MM	63*126	INCHES	1.6*3.2	METERS
SUPER JUMBO SLAB	2000*3500MM	78*137	INCHES	2.0*3.5	METERS
FINISH	POLISHED				



CALACATTA | RSC3060
Size | 3200x1600mm (126"x36")

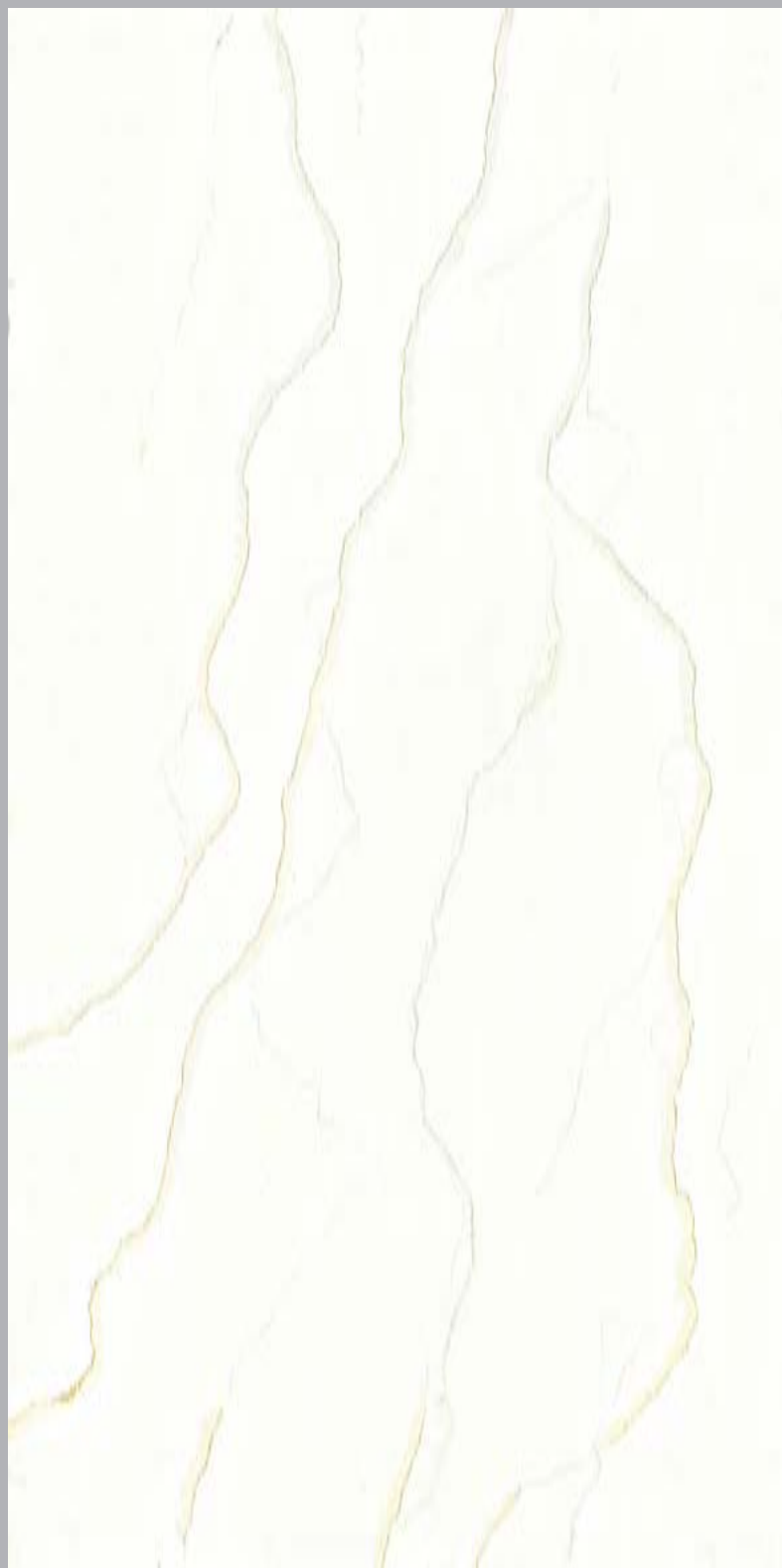
CALACATTA GOLD / OVERALL COLLECTION



NEW 2022


CALACATTA | RSC3024
Size | 3200x1600mm (126"x36")

ROYAL HOUSE / CALACATTA GOLD



NEW 2022

CALACATTA | RSC3060
Size | 3200x1600mm (126"x36")



Classic gold feature and intricate artwork interfaces over a field of snowy white. Calacatta Gold with white gold veins and sparkle patterns combined together.

Elegance with boldness!

ROYAL HOUSE / CALACATTA GOLD SPECIAL



CALACATTA | RSQ5001
Size | 3200x1600mm (126"x36")





CALACATTA | RSQ5001
 Size | 3200x1600mm (126"x36")

SLAB SIZE AVAILABLE				
PREFAB SIZE	108*26	108*36	108*42	108*52 INCHES
SLAB STANDARD THICKNESS	2cm	3cm		
JUMBO SLAB	1600*3200MM	63*126 INCHES	1.6*3.2 METERS	
SUPER JUMBO SLAB	2000*3500MM	78*137 INCHES	2.0*3.5 METERS	
FINISH	POLISHED			

ROYAL HOUSE / CALACATTA GOLD SPECIAL






ROYAL HOUSE / CALACATTA GOLD SPECIAL



CALACATTA | RSQ5002
Size | 3200x1600mm (126"x36")





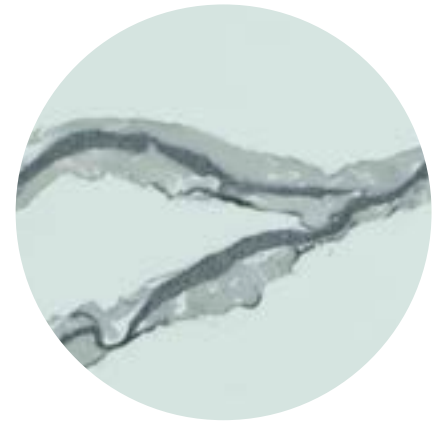
“Rich elegance is displayed in sweeping classical lines with layered veins of gray soft background”

ROYAL HOUSE / CALACATTA GOLD SPECIAL



CALACATTA | RSQ5002
Size | 3200x1600mm (126"x36")

SLAB SIZE AVAILABLE					
PREFAB SIZE	108*26	108*36	108*42	108*52	INCHES
SLAB STANDARD THICKNESS	2cm	3cm			
JUMBO SLAB	1600*3200MM	63*126	INCHES	1.6*3.2	METERS
SUPER JUMBO SLAB	2000*3500MM	78*137	INCHES	2.0*3.5	METERS
FINISH	POLISHED				



CALACATTA GOLD SPECIAL / OVERALL COLLECTION



NEW 2022

CALACATTA | RSQ5001
Size | 3200x1600mm (126"x36")

ROYAL HOUSE / CALACATTA GOLD SPECIAL



NEW 2022

CALACATTA | RSQ5002
Size | 3200x1600mm (126"x36")

SAVANA

PRIMORDIAL BEAUTY



“The primordial beauty of natural quartz originating from Savona, Italy is depicted in the Savana Collection. With dense veining scattered on a glossy silver and flaxen surface, Savana easily catches the eye of the beholders.”



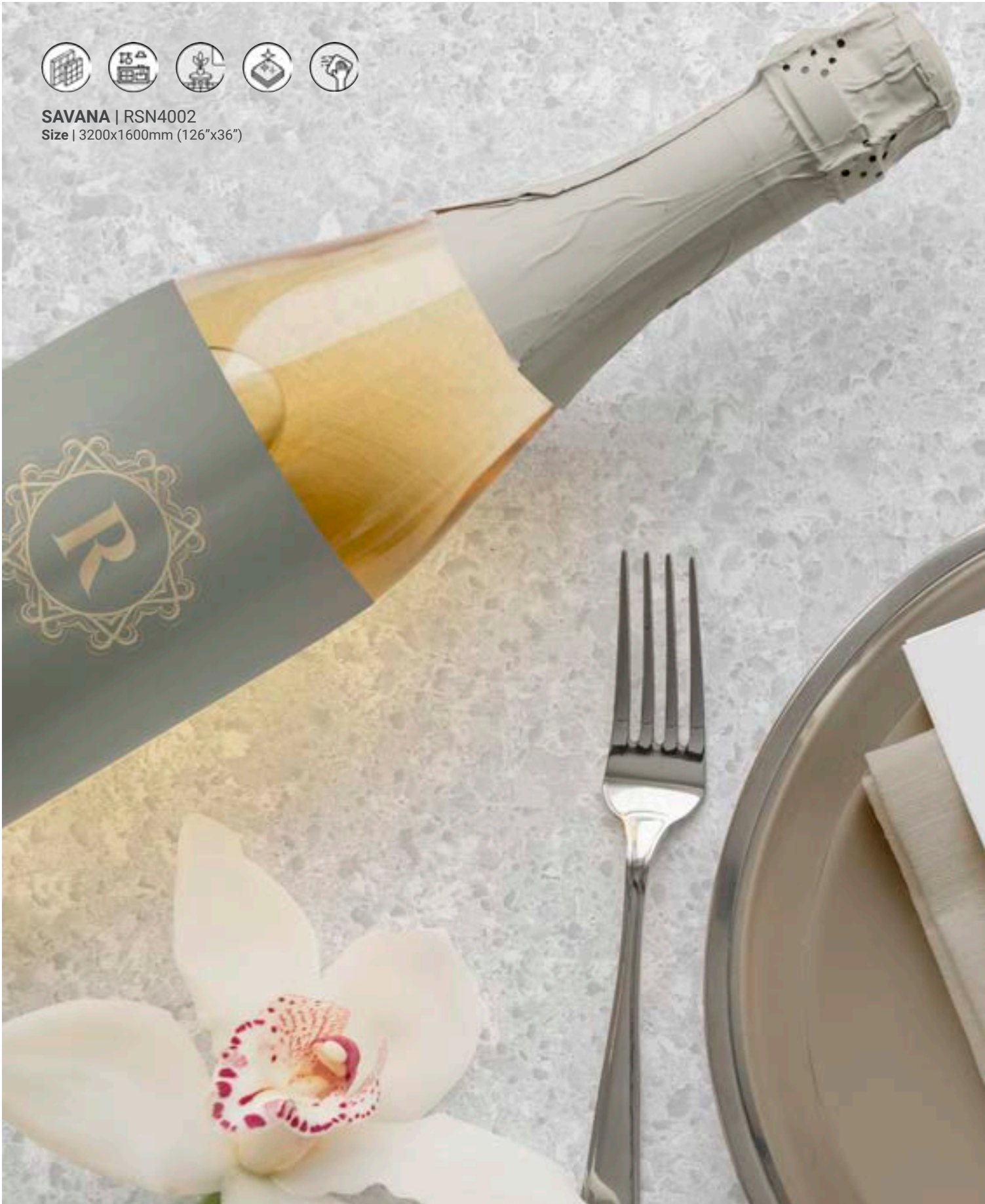


SLAB SIZE AVAILABLE					
PREFAB SIZE	108*26	108*36	108*42	108*52	INCHES
SLAB STANDARD THICKNESS	2cm	3cm			
JUMBO SLAB	1600*3200MM	63*126	INCHES	1.6*3.2	METERS
SUPER JUMBO SLAB	2000*3500MM	78*137	INCHES	2.0*3.5	METERS
FINISH	POLISHED				



SAVANA | RSN4002
 Size | 3200x1600mm (126"x36")







“Captures of the
moving treasure veiled
under warm desert
sands inspire deep
reflection.”





SLAB SIZE AVAILABLE					
PREFAB SIZE	108*26	108*36	108*42	108*52	INCHES
SLAB STANDARD THICKNESS	2cm	3cm			
JUMBO SLAB	1600*3200MM	63*126	INCHES	1.6*3.2	METERS
SUPER JUMBO SLAB	2000*3500MM	78*137	INCHES	2.0*3.5	METERS
FINISH	POLISHED				



SAVANA | RSN4003
 Size | 3200x1600mm (126"x36")

PRIMORDIAL BEAUTY / OVERALL COLLECTION



SAVANA | RSN4002
Size | 3200x1600mm (126"x36")



SAVANA | RSN4003
Size | 3200x1600mm (126"x36")

MARBLE

SIMPLE AND CLASSY



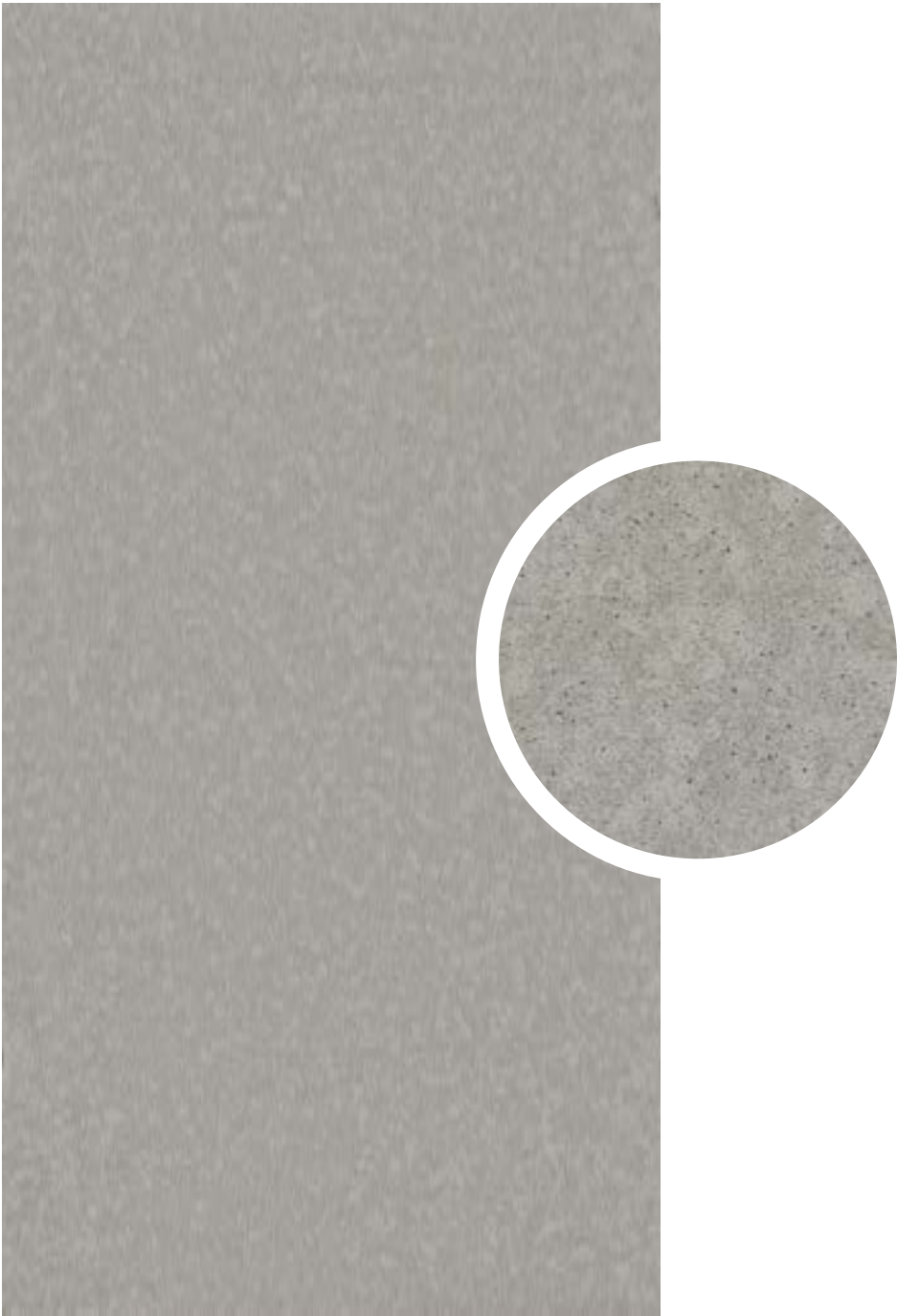
“Simple and classy, dense veining creates lively art on an elegant cold tone base.”

ROYAL HOUSE / MARBLE





ROYAL HOUSE / MARBLE

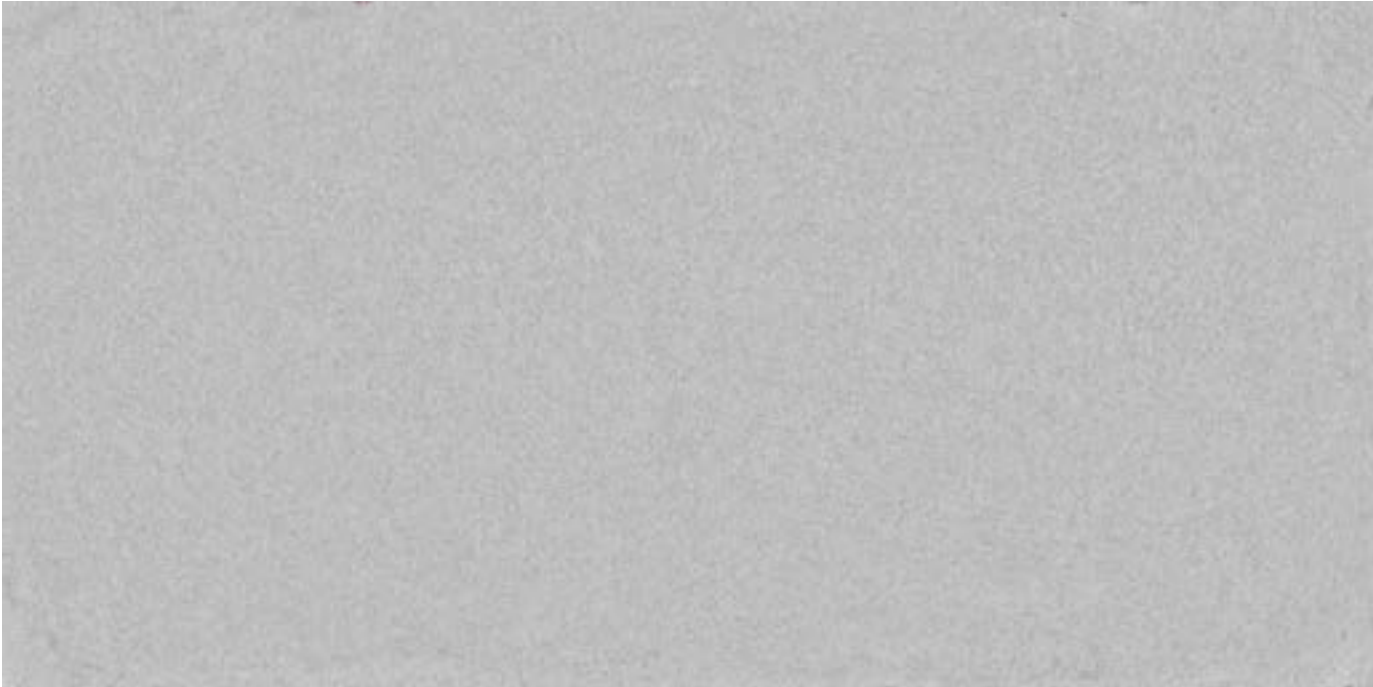


SLAB SIZE AVAILABLE					
PREFAB SIZE	108*26	108*36	108*42	108*52	INCHES
SLAB STANDARD THICKNESS	2cm	3cm			
JUMBO SLAB	1600*3200MM	63*126	INCHES	1.6*3.2	METERS
SUPER JUMBO SLAB	2000*3500MM	78*137	INCHES	2.0*3.5	METERS
FINISH	HONED				



MARBLE | RSV4260
 Size | 3200x1600mm (126"x36")



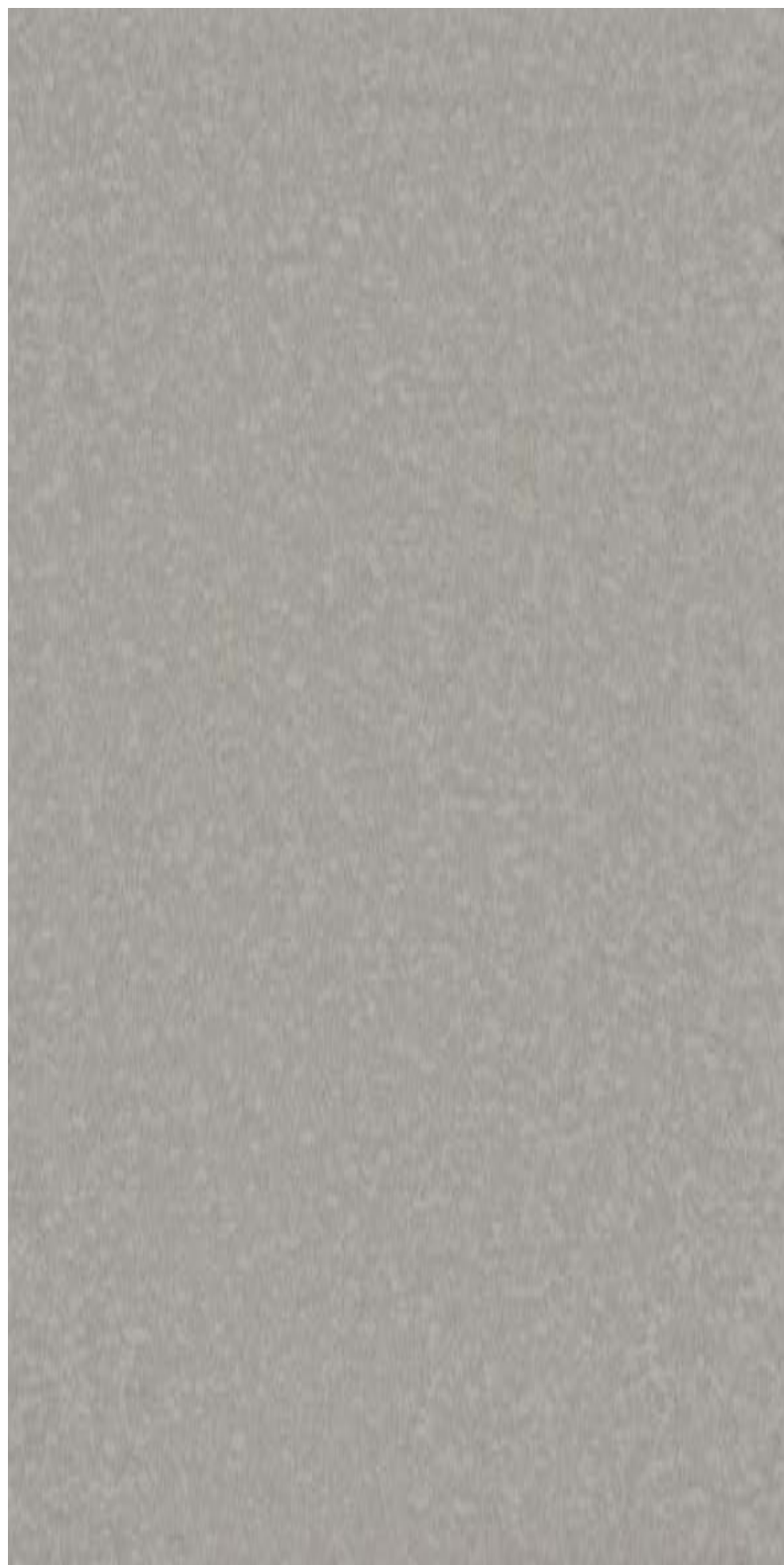


SLAB SIZE AVAILABLE				
PREFAB SIZE	108*26	108*36	108*42	108*52 INCHES
SLAB STANDARD THICKNESS	2cm	3cm		
JUMBO SLAB	1600*3200MM	63*126 INCHES	1.6*3.2 METERS	
SUPER JUMBO SLAB	2000*3500MM	78*137 INCHES	2.0*3.5 METERS	
FINISH	HONED			

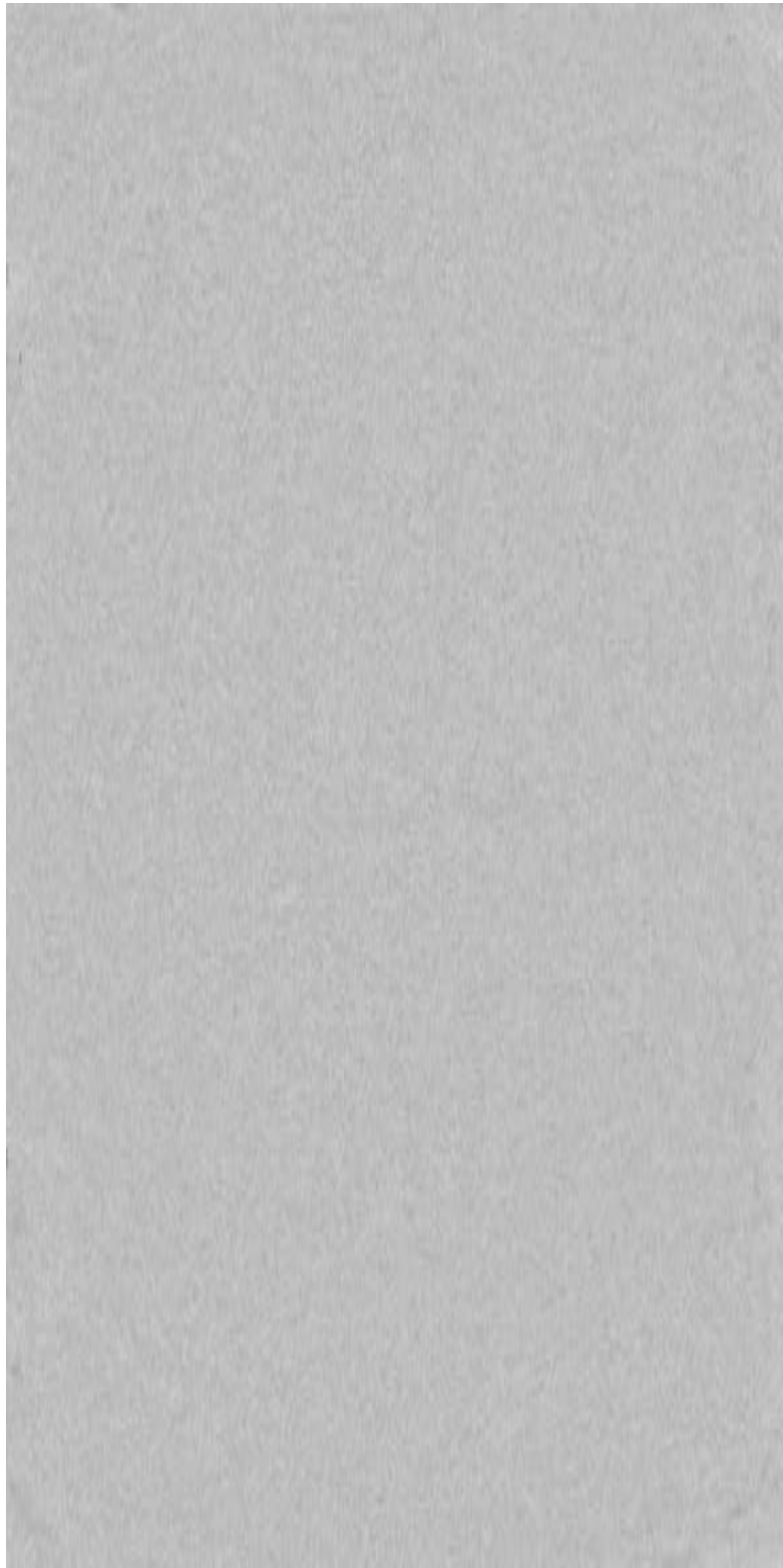


MARBLE | RSV4265
 Size | 3200x1600mm (126"x36")

SIMPLE AND CLASSY / OVERALL COLLECTION

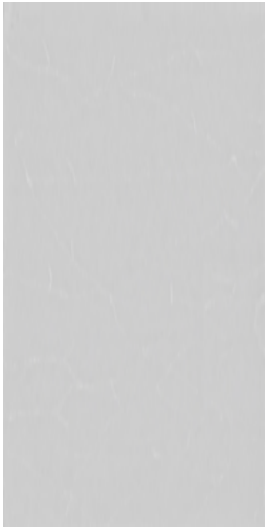


MARBLE | RSV4260
Size | 3200x1600mm (126"x36")

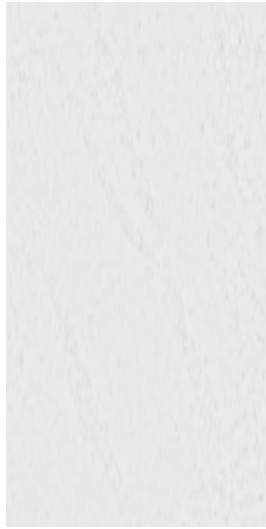


MARBLE | RSV4265
Size | 3200x1600mm (126"x36")

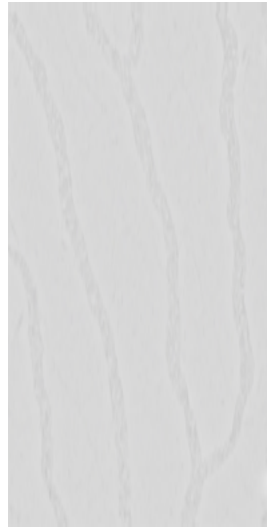
PORFOLIO



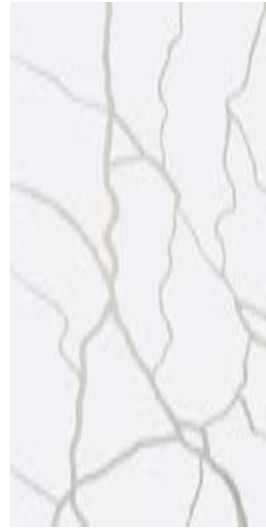
CALACATTA
RSC2008



CALACATTA
RSC2012



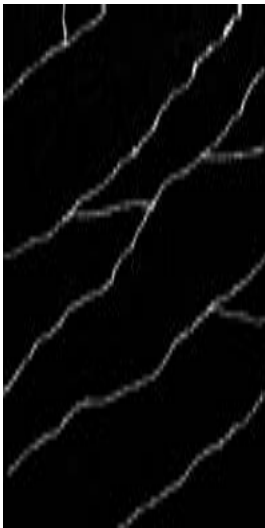
CALACATTA
RSC2026



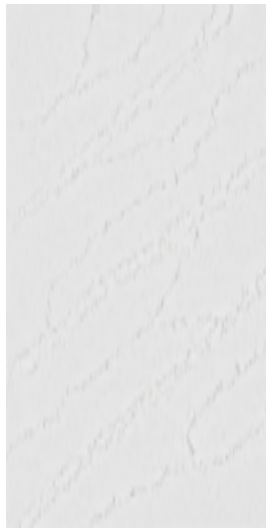
CALACATTA
RSC3011



CALACATTA
RSC3025



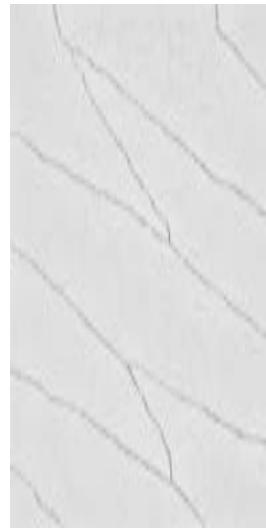
CALACATTA
RSC3036



CALACATTA
RSC3040



CALACATTA
RSC3045



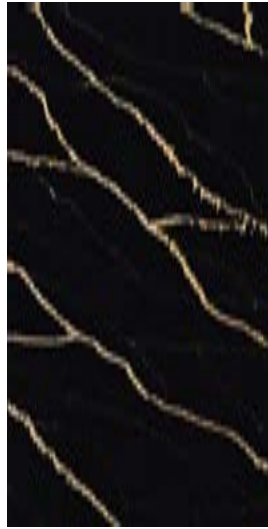
CALACATTA
RSC3051



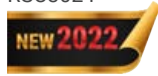
CALACATTA
RSC3062



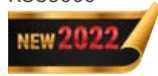
CALACATTA
RSC4052



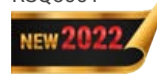
CALACATTA
RSC3024



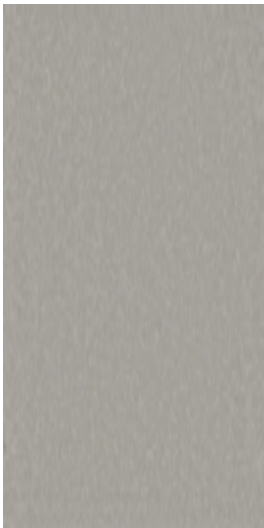
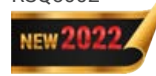
CALACATTA
RSC3060



CALACATTA
RSQ5001



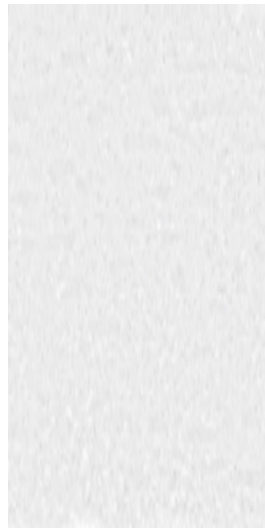
CALACATTA
RSQ5002



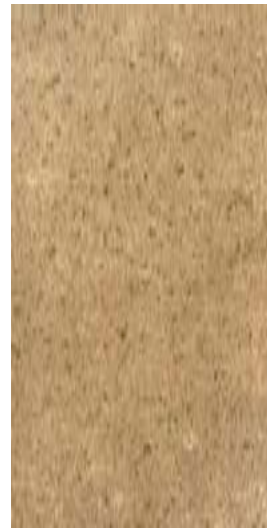
MARBLE
RSV4260



MARBLE
RSV4265



SAVANA
RSN4002



SAVANA
RSN4003

“Amisty gray base that unravels with the softest strokes of fine white veining, swirly slowly into the stone giving a warm glowing feeling.”

- Albert Einstein -

STANDARD SIZE

THICKNESS (mm)	WIDTH (mm)	LENGTH (mm)	NET WEIGHT (kg/m ²)
15	1600	3200	37.5
20	1600	3200	50
30	1600	3200	75

Thickness 12mm can be produced according to customer requirements

COMPARISON TABLE

STANDARD	WATER ABSORPTION (%)	BENDING (MPa)	COMPRESSION (MPa)	STAIN RESISTANCE
ROYALSTONE	★	○	★	★
GRANITE	■	■	★	○
MARBLE	○	■	○	○
ACRYLIC SOLID SURFACE	★	★	○	★

Note ★ Excellent ○ Good ■ Normal

SYMBOL



WALL



KITCHEN



INTERIOR



FLOOR



HONED



EASY CLEAN

DATASHEET

CHARACTERISTIC		TEST METHOD		RESULT
1	Thermal Shock, 20 Cycles		EN 14617 - 6:2012	NO
2	Frost Resistance		TCVN 8057 : 2009	The sample is not destroyed after 100 cycles
3	Density	kg/m ³	EN 14617 - 1:2013	2,310
4	Water Absorption	%	TCVN 8057 : 2009	0.01
5	Bending strength Resistance	Mpa	EN 14617 - 2:2008	74.80
6	Compression Resistance	Mpa	EN 14617 - 15:2005	127.00
7	Coefficient of thermal expansion	OC	EN 14617 - 11:2005	28.40 x 10 ⁶
8	Shock Resistance	J	EN 14617 - 9:2005	5.80
9	Abrasion Resistance	mm	EN 14617 - 4:2012	20.60
10	Resistance to staining	Iodine	TCVN 8057 : 2009	5
		Olive oil	TCVN 8057 : 2009	5
11	Surface hardness		TCVN 8057 : 2009	7
12	Chemistrial Resistance	Reference Value	EN 14617 - 10:2005	C4
Test Method HCl (acid)				
	-1h	99.3%		
	-8h	99.3%		
Test Method NaOH (base)				
	-1h	98.5%		
	-8h	88.2%		

CARE & MAINTENANCE

For periodical maintenance of ROYAL STONE Quartz materials and eliminate any remains or residues (Eg. oil or fat, wine, vinegar, lemon, soft drink, coffee, etc) from the quartz surface, it is only needed a regular cleaning with a neutral pH product soap/detergent, rinse with water and dry with a dry microfiber cloth or absorbent paper towel due to their exceptional physical and chemical characteristics.

As follows we will describe some simple treatment for the most common problems:

- **Fat stains:** dilute a small amount of detergent in some water and rub over the stain using a cloth. Next, rinse it off with water.
- **Water lime marks:** pour some vinegar (or any other dilute weak acid such as hydrochloric acid) directly on the surface to be treated. Rinse it off with plenty of water.
- **Silicone stains:** Scrape off using a blade and use a little solvent for any remains left behind (acetone or ethanol).

BASIC TECHNICAL SPECIFICATION MAINTENANCE TIPS

- Do not fit ROYAL STONE Quartz outside or in places where UV ray lamps are fitted (in places subject to intense solar radiation or UV lamps).
- Do not place objects recently removed from heat on ROYAL STONE Quartz surfaces on a regular basis (frying pans, etc.).
- Do not use water repellents or sealers to enhance the shine.
- Do not use strippers, caustic soda, degreasers or products with pH in excess of 10 or chlorine based products.
- Do not use products that contain hydrofluoric acid or dichloromethane. If you use bleach or solvent, you must rinse it off using water and never leave it long-time in contact with the surface.
- ROYAL STONE Quartz should not be polished, either on flooring or work surfaces.
- Aisle the countertop from external heat sources

bsi.



Certificate of Registration

ENVIRONMENTAL MANAGEMENT SYSTEM - ISO 14001:2015

This is to certify that: **CROWN JOINT STOCK COMPANY**
Nhon Trach II - Nhon Phu Industrial Park,
Hiep Phouc Ward, Nhon Trach District,
Dong Nai Province,
Vietnam

Holds Certificate Number: **EMS 573392**

and operates an Environmental Management System which complies with the requirements of ISO 14001:2015 for the following scope:

The manufacture and sale of quartz stones.

For and on behalf of BSI:

Chris Cheung, Head of Compliance & Risk - Asia Pacific

Original Registration Date: 2011-06-03
Latest Revision Date: 2018-09-11

Effective Date: 2018-09-11
Expiry Date: 2020-06-02

Page: 1 of 1



...making excellence a habit™

This certificate was issued electronically and remains the property of BSI and is bound by the conditions of contract. An electronic certificate can be authenticated using the BSI logo. Printed copies can be obtained at www.bsi.com/Products/Services or telephone +44 (0) 300 900 900. Further information regarding the scope of this certificate and the applicability of ISO 14001:2015 requirements may be obtained by consulting the registration. This certificate is valid only if provided original copies are in complete use.

Information and Contact: BSI, Attention: Client, Davy Avenue, Ipswich, Suffolk IP6 8PP, UK. Tel: +44 (0) 300 900 900. BSI Assurance UK Limited, registered in England under number 3602211 at 389 Chiswick High Road, London W4 4AL, UK. A member of the BSI Group of Companies.

bsi.



Certificate of Registration

QUALITY MANAGEMENT SYSTEM - ISO 9001:2015

This is to certify that: **ROYAL CERAMIC TILES CO., LTD**
My Xuan A Industrial Park,
My Xuan Commune, Tan Thanh District,
Ba Ria Vung Tau Province,
78000
Vietnam

Holds Certificate Number: **FM 559048**

and operates a Quality Management System which complies with the requirements of ISO 9001:2015 for the following scope:

The design, development and manufacture of ceramic, porcelain, polished tiles, artificial quartz stone.

For and on behalf of BSI:

Chris Cheung, Head of Compliance & Risk - Asia Pacific

Original Registration Date: 2010-03-13
Latest Revision Date: 2019-02-26

Effective Date: 2019-03-11
Expiry Date: 2022-03-10

Page: 1 of 2



...making excellence a habit™

This certificate was issued electronically and remains the property of BSI and is bound by the conditions of contract. An electronic certificate can be authenticated using the BSI logo. Printed copies can be obtained at www.bsi.com/Products/Services or telephone +44 (0) 300 900 900. Further information regarding the scope of this certificate and the applicability of ISO 9001:2015 requirements may be obtained by consulting the registration. This certificate is valid only if provided original copies are in complete use.

Information and Contact: BSI, Attention: Client, Davy Avenue, Ipswich, Suffolk IP6 8PP, UK. Tel: +44 (0) 300 900 900. BSI Assurance UK Limited, registered in England under number 3602211 at 389 Chiswick High Road, London W4 4AL, UK. A member of the BSI Group of Companies.

bsi.



Giấy Chứng Nhận

HỆ THỐNG QUẢN LÝ CHẤT LƯỢNG - ISO 9001:2015

Xác nhận rằng: **CÔNG TY TNHH GẠCH MEN HOÀNG GIA**
Khu Công nghiệp Mỹ Xuân A,
Phường Mỹ Xuân,
Thị xã Phú Mỹ,
Tỉnh Bà Rịa Vũng Tàu,
Việt Nam

Gõ giấy chứng nhận số: **FM 559048**

và thực hiện Hệ Thống Quản Lý Chất Lượng phù hợp với các yêu cầu của ISO 9001:2015 cho phạm vi:

Thiết kế, phát triển và sản xuất các loại gạch men, granite, đá thạch anh nhân tạo.

Đại diện cho tập đoàn BSI:

Chris Cheung, Phụ Trách Sự Tuân Thủ & Rủi Ro Châu Á Thái Bình Dương

Ngày đăng ký đầu tiên: **11/03/2010**
Ngày sửa đổi sau cùng: **26/02/2019**

Ngày hiệu lực: **11/03/2019**
Ngày hết hiệu lực: **10/03/2022**

Trang: 1/2



...making excellence a habit™

This certificate was issued electronically and remains the property of BSI and is bound by the conditions of contract. An electronic certificate can be authenticated using the BSI logo. Printed copies can be obtained at www.bsi.com/Products/Services or telephone +44 (0) 300 900 900. Further information regarding the scope of this certificate and the applicability of ISO 9001:2015 requirements may be obtained by consulting the registration. This certificate is valid only if provided original copies are in complete use.

Information and Contact: BSI, Attention: Client, Davy Avenue, Ipswich, Suffolk IP6 8PP, UK. Tel: +44 (0) 300 900 900. BSI Assurance UK Limited, registered in England under number 3602211 at 389 Chiswick High Road, London W4 4AL, UK. A member of the BSI Group of Companies.



GIẤY CHỨNG NHẬN HỢP QUY

Số: 44/2016/DNSX-VLXD

(theo Quyết định số 339/QĐCN-VLXD ngày 24 tháng 05 năm 2016)

Chứng nhận sản phẩm

**ĐÁ ỐP LÁT NHÂN TẠO
TRÊN CƠ SỞ CHẤT KẾT DÍNH HỮU CƠ**

Nhãn hiệu hàng hoá: **ROYAL STONE**

Được sản xuất bởi

CÔNG TY CỔ PHẦN VƯƠNG MIỆN

Địa chỉ CSSX: Khu Công nghiệp Nhon Trạch II, Nhon Phú,
huyện Nhon Trạch, tỉnh Đồng Nai

Phù hợp với Quy chuẩn QCVN 16:2014/BXD

Nhóm sản phẩm gạch, đá ốp lát

Công ty được phép sử dụng dấu hợp quy

Phương thức đánh giá

Phương thức 5 theo Thông tư số 28/2012/TT-BKHHCN ngày 12/12/2012

Giấy Chứng nhận và dấu hợp quy có giá trị sử dụng từ ngày:
24/05/2016 đến 23/05/2019

GIÁM ĐỐC VP

Trần Thị Thu Hà

VIỆN TRƯỞNG

Lương Đức Long

VLXD



ROYAL GROUP

ROYAL HOUSE MANUFACTURE AND INVESTMENT JSC

Road NO.8, Nhon Trach II Industrial Park, Nhon Trach District, Dong Nai
Province, Viet Nam
Tel: (84-251) 3569 818 Fax: (84-251) 3560 952