



**TAICERA®**

— SINCE 1994 —

# Product of Tile Art

TRUST

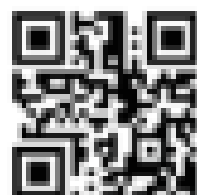
CLASSIC

REVOLUTION

SPEED

SAFETY

ENVIRONMENTAL PROTECTION



[www.taicera.com](http://www.taicera.com)



# INDEX

## 01. Abrasion

### FULL BODY RUSTIC TILES

Bush Hammer series	08
Park Way series	10
Slate series	12
Uni Stone series	14
Ambassador series	16
Lava series	18

### JAPAN ANTI SLIP - R11

Adoria serie	22
Cerifos series	24
Fiumi series	26
Anti slip series	27
Liliya series	28
Lava series	30

## 02.

### SIZE 30x60, 60x60

### GLAZED PORCELAIN TILES (SMOOTH)

#### COLOR BODY

Super White series	34
Super Black series	36
Macael series	38
Cla2lin series	40
Marble Art series	42
Atrium series	44
Onyx Stone series	46

### GLAZED POLISH TILES

#### WHITE BODY

Super White series	50
Mekong series	52

#### COLOR BODY

Macael series	54
Cla2lin series	56
Kimberlite series	58
Dacia series	60
Sidney series	62

## 03. Abrasion

### DOUBLE LOADING NATURAL TILES

Lavie series	66
Moka series	68
Kimberlite series	70
Dacia series	72

### PREMIUM PRODUCT

Transform series	74
Praise series	76
Nature series	78
Mix Stone series	80
Star series	84
Brush series	86
Cerrazzo series	88

## 04. Abrasion

### HOVE TILES

Hove series	90
-------------	----

## 05. Abrasion

### POLISH GRANITE TILES

Multi-Pipe series	96
Crystal Powder series	98
Imperial series	100
Fossil series	102
Jade Diamond series	104

### UNICOLORED SERIES

## 06.

### WOOD DESIGN TILES

Cedar Wood series	108
-------------------	-----

## 07. Abrasion

### 20mm FULL BODY TILES

JDD20mm series	114
DD20mm series	116

## 08.

### SIZE 80 x 80

### GLAZED POLISH TILES

#### WHITE BODY

Super White series	120
Truong Sa series	122
Hoang Sa series	124
Mekong series	126
River series	128

### GLAZED PORCELAIN TILES

#### COLOR BODY

La Sen series	132
Leaf series	134
Cerrazzo series	138
Lavie series	140

## 09.

### SIZE 90 x 90

### GLAZED POLISH TILES

#### WHITE BODY

Super White series	144
Truong Sa series	146
Mekong series	148
River series	150

### GLAZED PORCELAIN TILES

#### COLOR BODY

Truong Sa series	154
Nhay series	156
Sunshine series	158
Transit series	160
Mix Stone series	162

## 10.

### SIZE 60 x 120

### GLAZED POLISH TILES

#### WHITE BODY

Super White series	166
Truong Sa series	168
Mekong series	170
River series	172

#### COLOR BODY

Kimberlite series	174
-------------------	-----

### GLAZED PORCELAIN TILES

#### COLOR BODY

Lighting series	178
Mix Stone series	180
Kimberlite series	182

## 11. CERAMIC TILES

Ceramic series	184
----------------	-----

## 12. TECHNICAL STANDARDS

Technical Specifications & Packing List Of Tiles	186
---	-----





**01.** **ABRASION**  
FULL BODY  
RUSTIC TILES





# BUSH HAMMER SERIES

Full Body Rustic Tiles

“

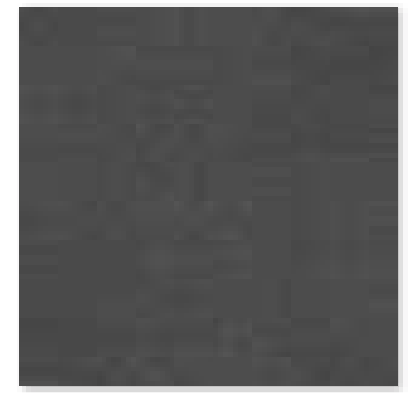
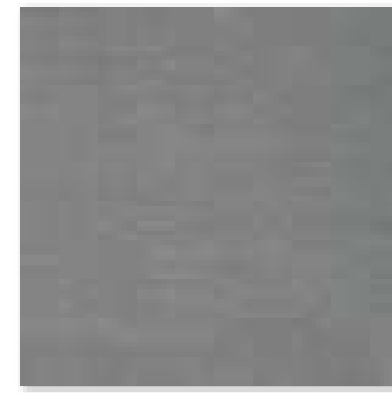
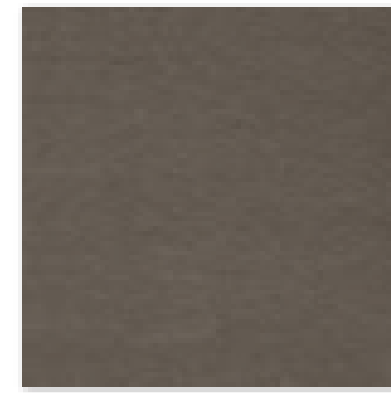
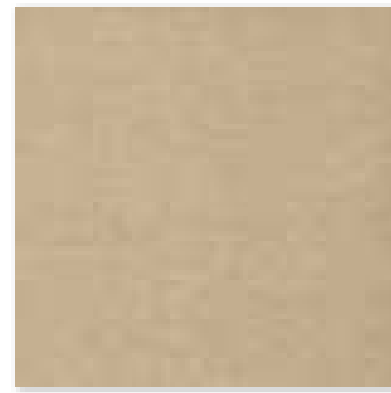
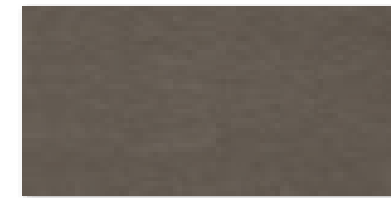
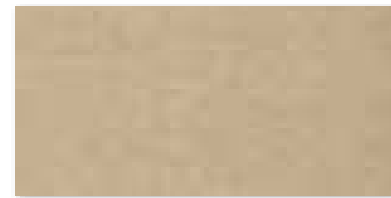
Lấy ý tưởng từ nét đẹp hoang sơ của những viên đá bị bào mòn theo thời gian, chúng tôi cho ra đời dòng sản phẩm Bush Hammer. Mặc dù gọi là đá nhưng sản phẩm không mang sắc lạnh mà ngược lại nó đem đến không gian tươi trẻ, tinh tế cho không gian sống của bạn.

*Inspired by the unspoiled beauty of stones that have worn away over time, we launched the Bush Hammer product line. Although called stone, the product does not bring cold colors, but on the contrary, it brings a fresh and delicate space to your living space..*

”



G38541 300x300mm



G38525 300x300mm  
G63525 600x300mm  
G68525 600x600mm

G38522 300x300mm  
G63522 600x300mm  
G68522 600x600mm

G38548 300x300mm  
G63548 600x300mm  
G68548 600x600mm

G38521 300x300mm  
G63521 600x300mm  
G68521 600x600mm

G38528 300x300mm  
G63528 600x300mm  
G68528 600x600mm

G38529 300x300mm  
G63529 600x300mm  
G68529 600x600mm



# PARK WAY SERIES

Full Body Rustic Tiles

“

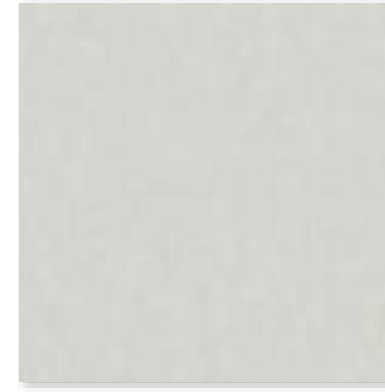
Bắt nguồn cảm hứng từ loại đá trầm tích nằm sâu dưới đáy đại dương, qua hàng ngàn năm được mài mòn bởi nước biển tạo nên những hoa văn đẹp mắt như những dải cát trải dài trên đá, Taicera đã sáng tạo nên dòng sản phẩm Park way với 4 màu sắc: trắng, olive, xám và đen. Dòng sản phẩm này rất được ưa chuộng tại các quốc gia phát triển như châu Âu, Á, Úc ... Sử dụng sản phẩm Park way sẽ đem lại cho chúng ta một không gian rất gần gũi với thiên nhiên nhưng cũng không kém phần sang trọng.

”

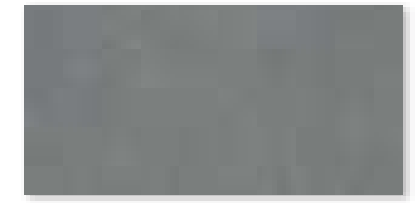
*Inspired by the sedimentary rock deep below the ocean, over thousands of years it has been eroded by sea water to create beautiful patterns like the With a stretch of sand on the rocks, taicera has created a parkway product line with 4 colors: white, olive, gray and black. This product line is very popular in developed countries such as europe, asia, australia... Using parkway products will give us a space very close to nature but equally luxurious.*



G38025 300x300mm  
G63025 600x300mm  
G68025 600x600mm



G38048 300x300mm  
G63048 600x300mm  
G68048 600x600mm



G38028 300x300mm  
G63028 600x300mm  
G68028 600x600mm



G38029 300x300mm  
G63029 600x300mm  
G68029 600x600mm



#### PACKING DETAILS

Size/mm	Thickness/mm	pieces/box	m2/box	kgs/box	boxes/pallet
300x300	7.7	11	0.99	16	66
600x300	8.7	8	1.44	28	40
600x600	8.7	4	1.44	28	40



# SLATE SERIES

Full Body Rustic Tiles

“

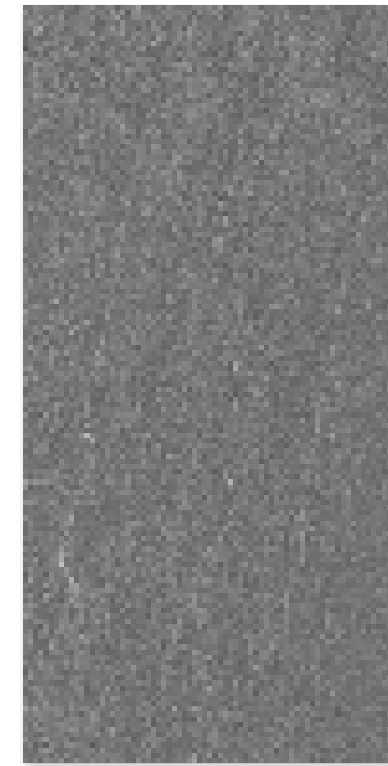
Sự tinh tế trong thiết kế hoa văn, sự hài hòa về màu sắc kết hợp với những tính năng kỹ thuật vượt trội đã cho ra đời dòng sản phẩm đồng chất Slate. Sản phẩm vừa giữ được nét cổ xưa gần gũi với thiên nhiên lại vừa tinh xảo, hiện đại tạo nên sự hài hòa thích hợp cho không gian sống thân thiện với môi trường...

*The sophistication in pattern design, color harmony combined with outstanding technical features gave birth to the homogenous SLATE product line. Product stucco keeps the ancient features close to nature, yet sophisticated and modern, creating a suitable harmony for an environmentally friendly living space...*

”



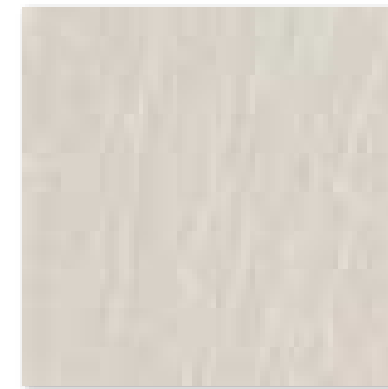
G38625 300x300mm  
G63425 600x300mm



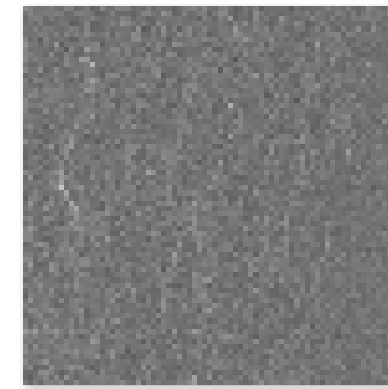
G38628 300x300mm  
G63428 600x300mm



G38629 300x300mm  
G63429 600x300mm



G38622 300x300mm



G38624 300x300mm



G38638 300x300mm

PACKING DETAILS

Size/mm	Thickness/mm	pieces/box	m2/box	kgs/box	boxes/pallet
300x300	7.7	11	0.99	16	66
600x300	8.7	8	1.44	28	40



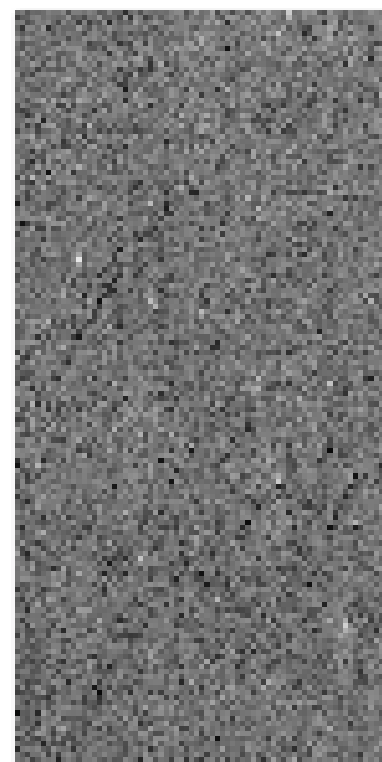
# UNI STONE

Full Body Rustic Tiles

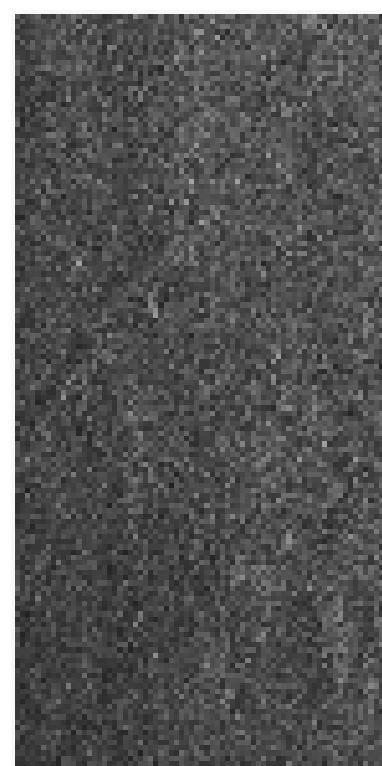


Hòa mình với xu hướng quay về với tự nhiên - sản phẩm UNI STONE với những đường nét hoa văn mạnh mẽ tạo nên một bức tranh phong phú bởi sự tương phản giữa các vân đá và màu sắc tự nhiên của đất trời sẽ dẫn dắt chúng ta đến một khu vườn thiên nhiên thoáng đãng.

*With the tendency to comeback with natural life, uni stone series With strong design to create the wonderful painting with contrast of Tone vein and natural color of land and sun to bring us back the natural and cool garden.*



G63128 600x300mm



G63129 600x300mm



PACKING DETAILS

Size/mm	Thickness/mm	pieces/box	m2/box	kgs/box	boxes/pallet
600x300	8.7	8	1.44	28	40

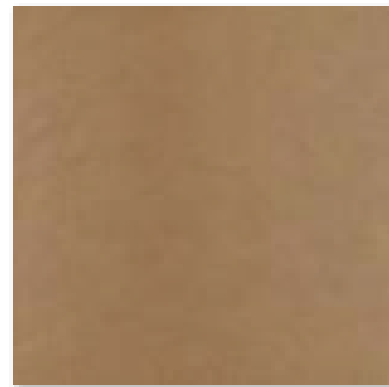


# AMBASSADOR SERIES

Full Body Rustic Tiles



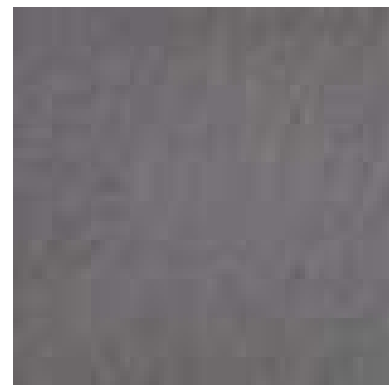
G38A13 300x300mm



G38B14 300x300mm



G38A18 300x300mm



G38A19 300x300mm



PACKING DETAILS

Size/mm	Thickness/mm	pieces/box	m2/box	kgs/box	boxes/pallet
300x300	7.7	11	0.99	16	66

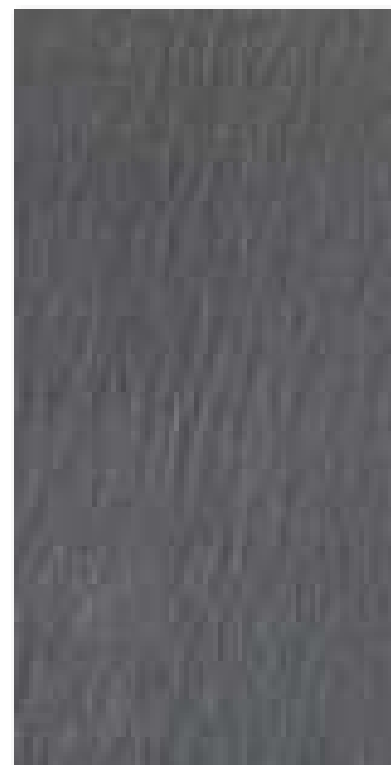


# LAVA SERIES

Full Body Rustic Tiles



G63228 600x300mm



G63229 600x300mm



PACKING DETAILS

Size/mm	Thickness/mm	pieces/box	m2/box	kgs/box	boxes/pallet
600x300	8.7	8	1.44	28	40





**ANTI - SLIP TILES**  
GLAZED PORCELAIN TILES

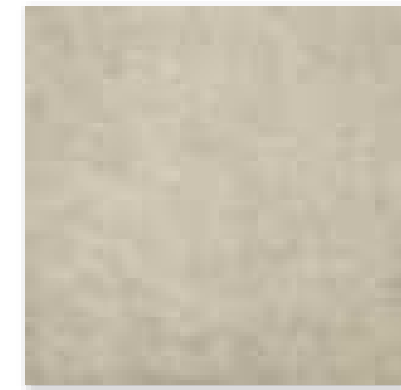


# ADORIA SERIES

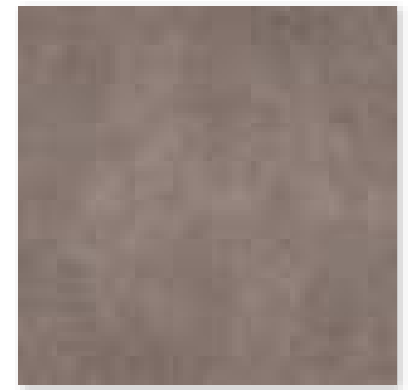
Glazed Porcelain Tiles



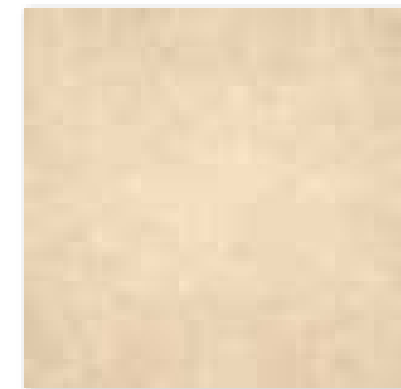
# ADORIA



G38930ND 300x300mm



G38931ND 300x300mm



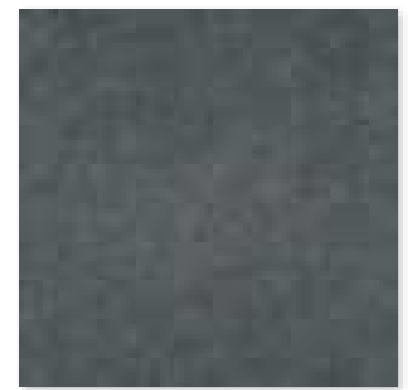
G38932ND 300x300mm



G38933ND 300x300mm



G38934ND 300x300mm



G38939ND 300x300mm

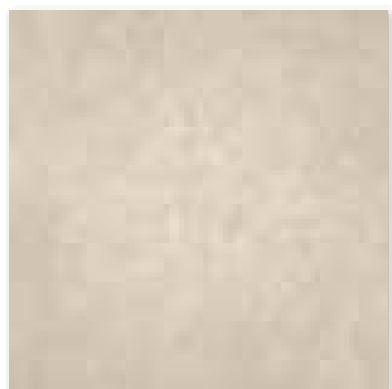
PACKING DETAILS

Size/mm	Thickness/mm	pieces/box	m2/box	kgs/box	boxes/pallet
300x300	7.7	11	0.99	16	66



# CERIFOS SERIES

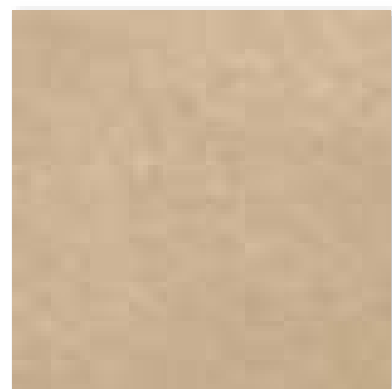
Glazed Porcelain Tiles



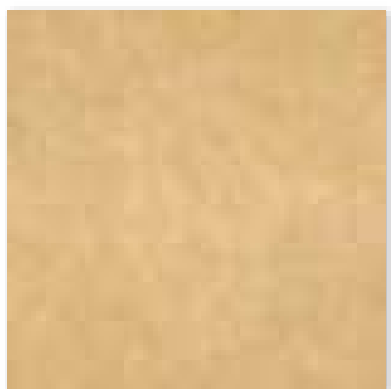
G38910ND 300x300mm



G38912ND 300x300mm



G38913ND 300x300mm



G38916ND 300x300mm



G38918ND 300x300mm



G38919ND 300x300mm



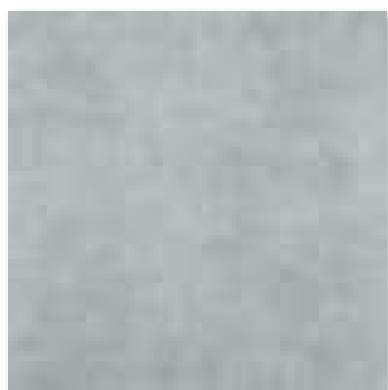
PACKING DETAILS

Size/mm	Thickness/mm	pieces/box	m2/box	kgs/box	boxes/pallet
300x300	7.7	11	0.99	16	66



# FIUMI SERIES

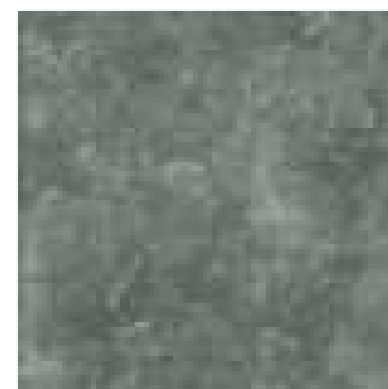
Glazed Porcelain Tiles



G38731ND 300x300mm



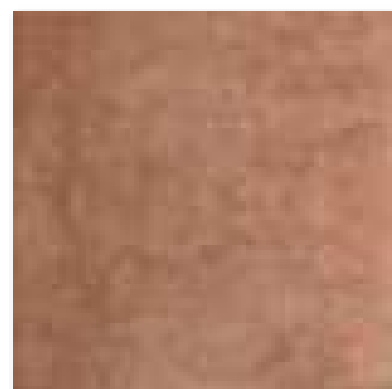
G38732ND 300x300mm



G38733ND 300x300mm



G38734ND 300x300mm



G38735ND 300x300mm

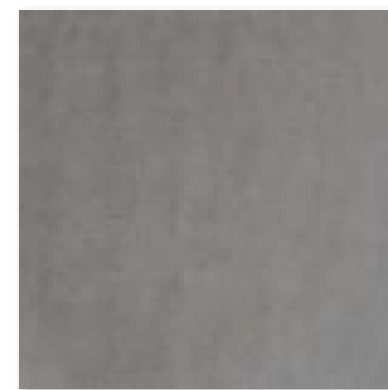


# ANTI SLIP SERIES

Glazed Porcelain Tiles



G38925ND 300x300mm



G38928ND 300x300mm



PACKING DETAILS

Size/mm	Thickness/mm	pieces/box	m2/box	kgs/box	boxes/pallet
300x300	7.7	11	0.99	16	66



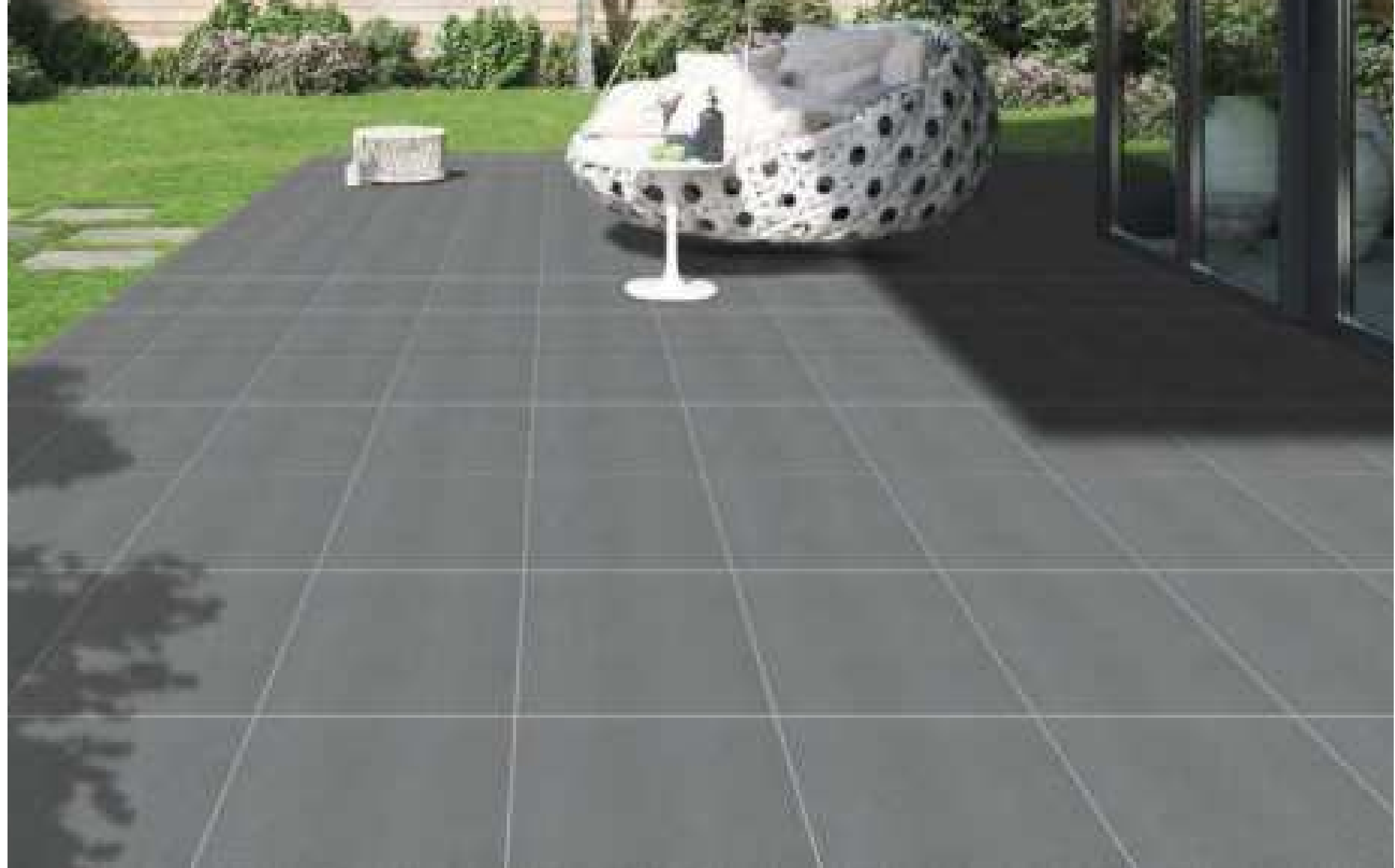
# LILIYA SERIES

Full Body Rustic Tiles & Anti Slip



Với thiết kế bề mặt chập nổi 3 chiều để làm tăng độ chống trượt và chống mài mòn, Taicera giới thiệu dòng sản phẩm mới LILIYA với thiết kế Mould hoa độc đáo đem đến không gian khác lạ, hiện đại nhưng ko xa rời tính cổ điển truyền thống của gạch đồng chất.

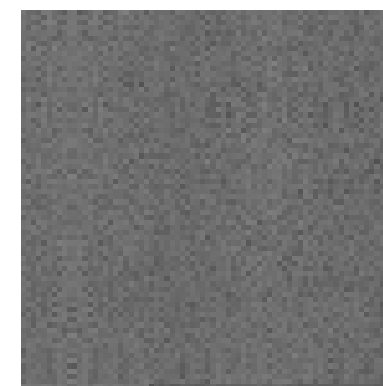
*With a 3-D embossed surface design to increase slip and wear resistance, Taicera introduces the LILIYA series with a unique mould design that brings a different, modern space but does not stay away from the classical and traditional features of rustic tiles*



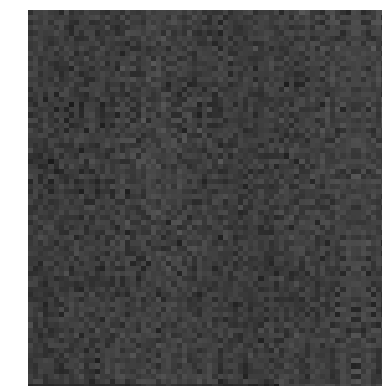
**G38225** Size: 300x300mm



**G38248** Size: 300x300mm



**G38228** Size: 300x300mm



**G38229** Size: 300x300mm

PACKING DETAILS

Size/mm	Thickness/mm	pieces/box	m2/box	kgs/box	boxes/pallet
300x300	7.7	11	0.99	16	66

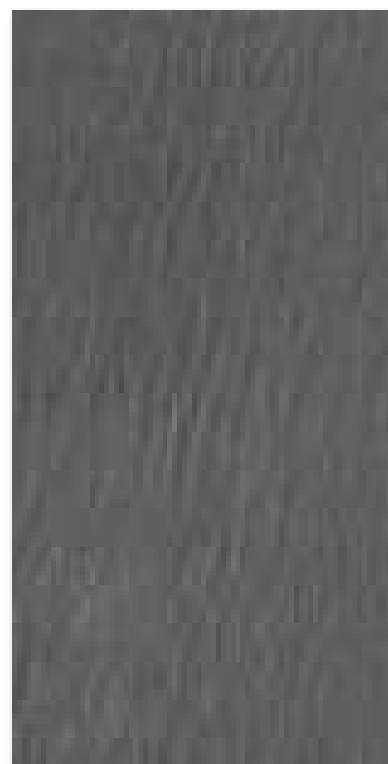


# LAVA SERIES

Full Body Rustic Tiles



G63228ND 600x300mm



G63229ND 600x300mm



PACKING DETAILS

Size/mm	Thickness/mm	pieces/box	m2/box	kgs/box	boxes/pallet
600x300	8.7	8	1.44	28	40



# 02.

SIZE

300x600 mm

600x600 mm

**GLAZED  
PORCELAIN**

*COLOR BODY*





G63035 600x300 mm  
 G68035 600x600 mm



# SUPER WHITE SERIES

GLAZED PORCELAIN - COLOR BODY

PACKING DETAILS

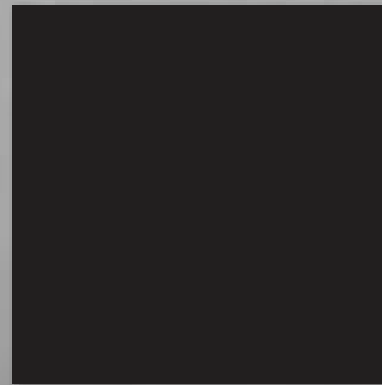
Size/mm	Thickness/mm	pieces/box	m2/box	kgs/box	boxes/pallet
600x300	8.7	8	1.44	28	40
600x600	8.7	4	1.44	28	40





# SUPER BLACK SERIES

GLAZED PORCELAIN - COLOR BODY



G63039      600x300 mm  
G68039      600x600 mm

#### PACKING DETAILS

Size/mm	Thickness/mm	pieces/box	m2/box	kgs/box	boxes/pallet
600x300	8.7	8	1.44	28	40
600x600	8.7	4	1.44	28	40



Many faces

# MACAEL SERIES

GLAZED PORCELAIN - COLOR BODY



G63055

600x300 mm

PACKING DETAILS

Size/mm	Thickness/mm	pieces/box	m2/box	kgs/box	boxes/pallet
600x300	8.7	8	1.44	28	40



Many faces

# CLA2LIN SERIES

GLAZED PORCELAIN - COLOR BODY



G63056

600x300 mm

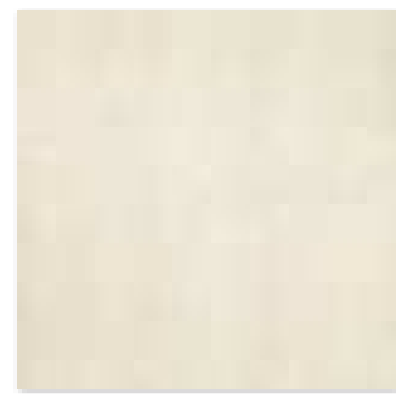
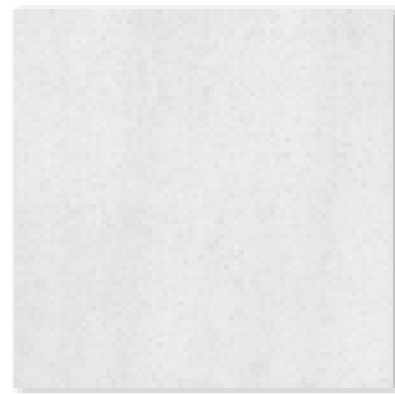
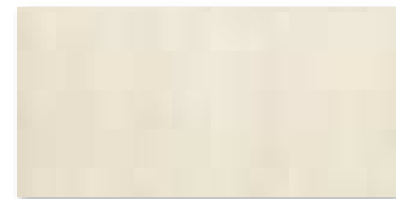
PACKING DETAILS

Size/mm	Thickness/mm	pieces/box	m2/box	kgs/box	boxes/pallet
600x300	8.7	8	1.44	28	40



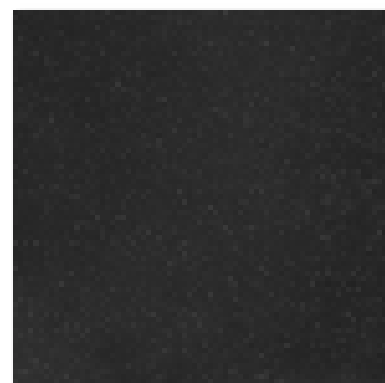
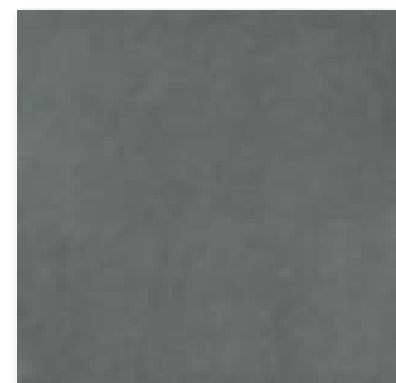
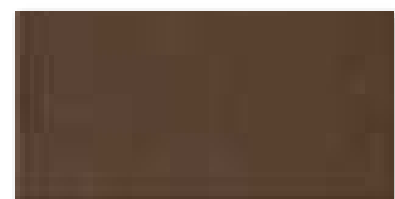
# MARBLE ART SERIES

GLAZED PORCELAIN - COLOR BODY



G63915 600x300mm  
G68915 600x600mm

G63913 600x300mm  
G68913 600x600mm



G63911 600x300mm  
G68911 600x600mm

G63918 600x300mm  
G68918 600x600mm

G63919 600x300mm  
G68919 600x600mm

## GLAZED PORCELAIN TILES SMOOTH

MARBLE ART - Hiện đại và thời thượng với nhiều gam màu trang nhã sẽ mang lại một không gian thư thái, mát dịu ... Với sự sáng tạo và tỉ mỉ của các công nhân lành nghề, sản phẩm có nhiều kích thước và hình dạng khác nhau để tạo nên những họa tiết trang trí phong phú, sang trọng.

*MARBLE ART - Modern and style with nice color for relax and cool environment ... Creative and carefully of the workers, the products has difference sizes and shapes to create many luxury decoration pattern.*

### PACKING DETAILS

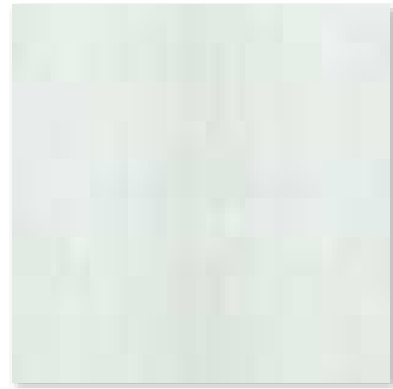
Size/mm	Thickness/mm	pieces/box	m2/box	kgs/box	boxes/pallet
600x300	8.7	8	1.44	28	40
600x600	8.7	4	1.44	28	40



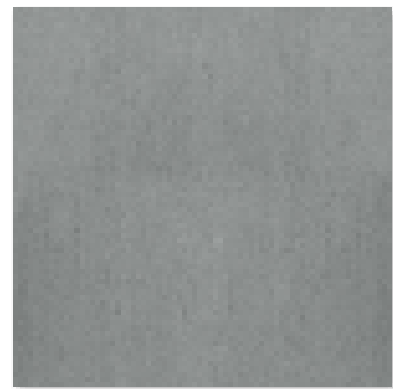


# ATRIUM SERIES

GLAZED PORCELAIN - COLOR BODY



G63935 600x300mm  
G68935 600x600mm

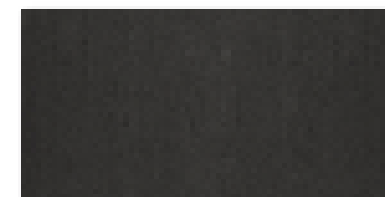


G63937 600x300mm  
G68937 600x600mm



Với xu hướng quay về với tự nhiên, Taicera giới thiệu dòng sản phẩm xi măng tự nhiên, có màu sắc gần gũi với môi trường cho cả không gian nội thất và ngoại thất. Bởi vì có nguồn gốc từ nguyên liệu đá nên màu xi măng nguyên chất sẽ luôn luôn bền vững với thời gian.

*With the coming back natural tendency, taicera presents a natural cement series with the color closing with all of our environment included internal and external areas. The cement color essence is always viable at all times because of his stony material.*



G63939 600x300mm  
G68939 600x600mm



#### PACKING DETAILS

Size/mm	Thickness/mm	pieces/box	m2/box	kgs/box	boxes/pallet
600x300	8.7	8	1.44	28	40
600x600	8.7	4	1.44	28	40



Many faces

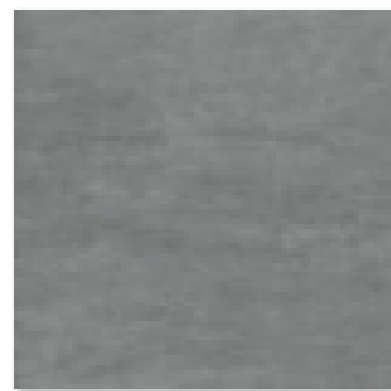
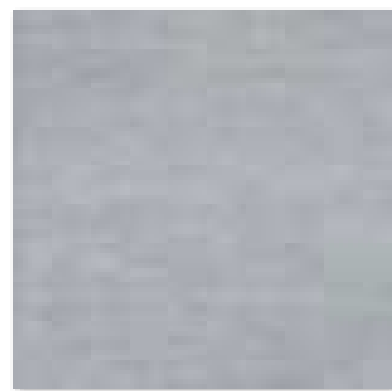
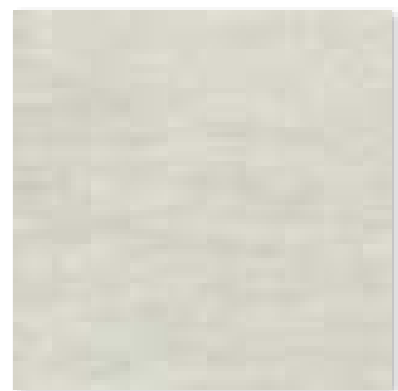
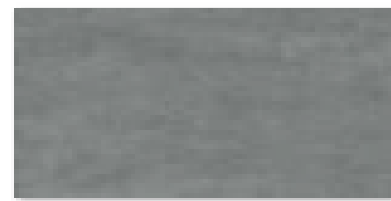
# ONYX STONE SERIES

GLAZED PORCELAIN - COLOR BODY



Dòng sản phẩm ONYX STONE được lấy ý tưởng từ nguồn gỗ hóa thạch, với những đường nét hoa văn đa dạng tự nhiên của những số gỗ, được sản xuất theo công nghệ in phun kỹ thuật số hiện đại

*Onyx stone series was taken inspiration from fossil wood with wood fiber pattern which is created by modern inkjet technology.*



G63985-S 600x300 mm  
G68985-S 600x600 mm

G63987-S 600x300 mm  
G68987-S 600x600 mm

G63988-S 600x300 mm  
G68988-S 600x600 mm



PACKING DETAILS

Size/mm	Thickness/mm	pieces/box	m2/box	kgs/box	boxes/pallet
600x300	8.7	8	1.44	28	40
600x600	8.7	4	1.44	28	40

# 02.

SIZE

300x600 mm

600x600 mm

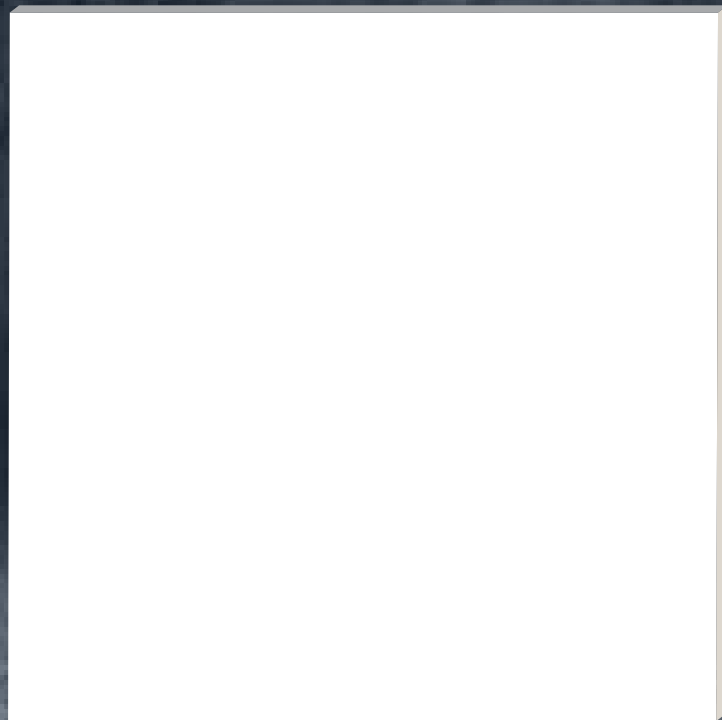
**GLAZED POLISH**





# SUPER WHITE SERIES

GLAZED POLISH - WHITE BODY



GP63035  
GP68035

600x300 mm  
600x600 mm



#### PACKING DETAILS

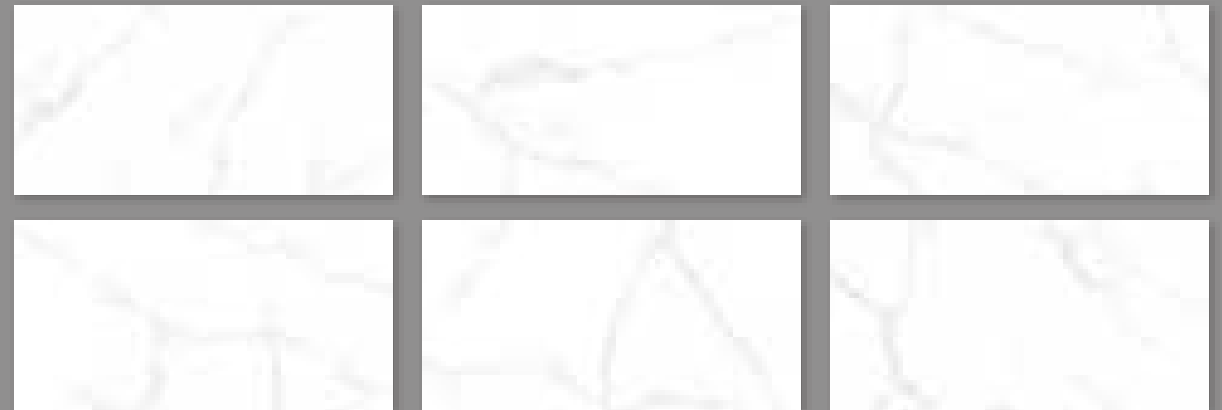
Size/mm	Thickness/mm	pieces/box	m2/box	kgs/box	boxes/pallet
600x300	8.7	8	1.44	28	40
600x600	8.7	4	1.44	28	40



Many faces

# MEKONG SERIES

GLAZED POLISH - WHITE BODY



GP63085

600x300 mm



GP68085

600x600 mm

PACKING DETAILS

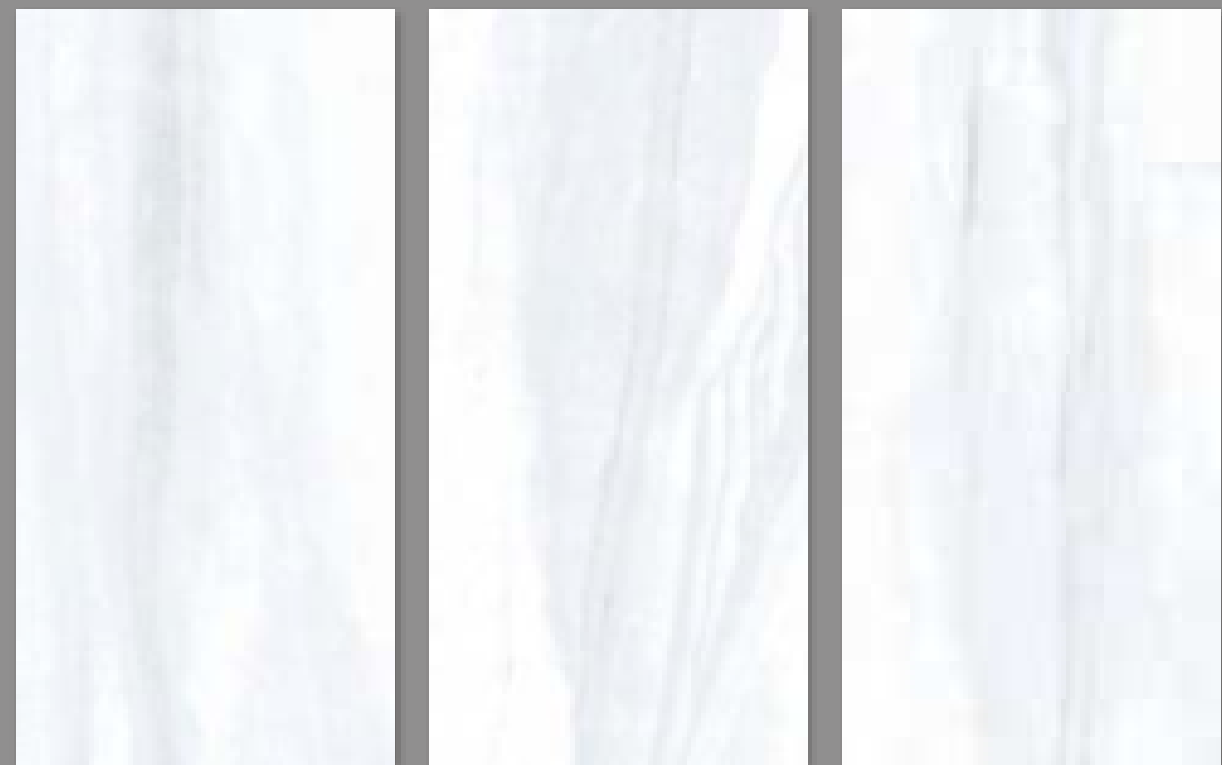
Size/mm	Thickness/mm	pieces/box	m2/box	kgs/box	boxes/pallet
600x300	8.7	8	1.44	28	40
600x600	8.7	4	1.44	28	40



Many faces

# MACAEL SERIES

GLAZED POLISH - COLOR BODY



GP63055

600x300 mm

PACKING DETAILS

Size/mm	Thickness/mm	pieces/box	m2/box	kgs/box	boxes/pallet
600x300	8.7	8	1.44	28	40





Many faces

# CLA2LIN SERIES

GLAZED POLISH - COLOR BODY



GP63056

600x300 mm



PACKING DETAILS

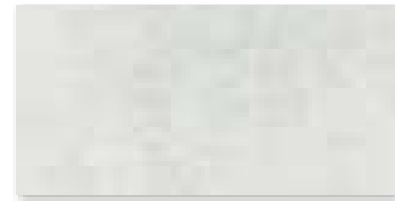
Size/mm	Thickness/mm	pieces/box	m2/box	kgs/box	boxes/pallet
600x300	8.7	8	1.44	28	40



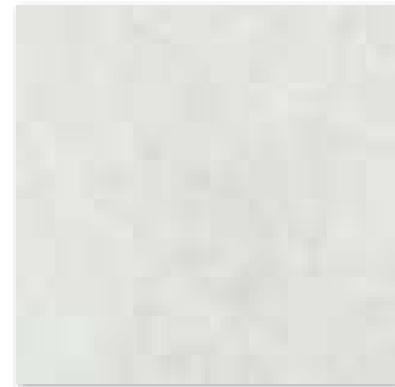
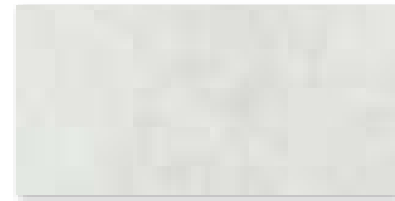
Many faces

# KIMBERLITE SERIES

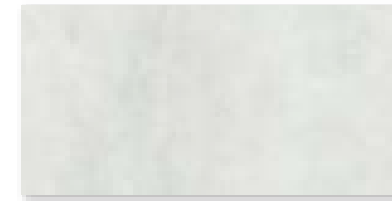
GLAZED POLISH - COLOR BODY



GP63845 600x300mm



GP68845 600x600mm



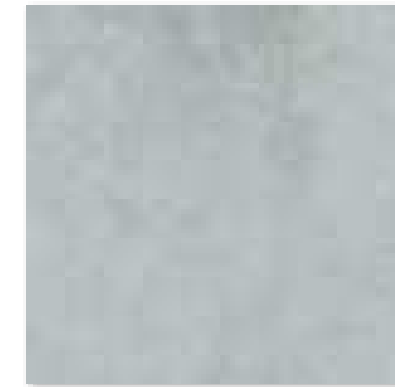
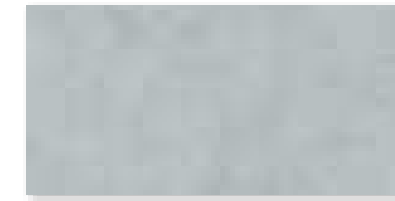
GP63845 600x300mm



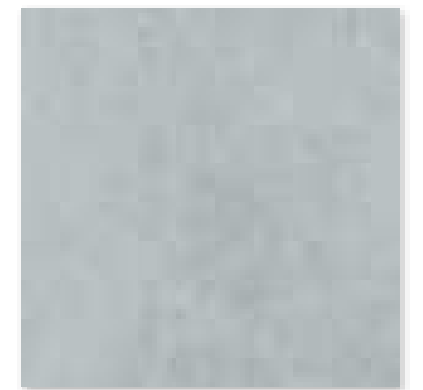
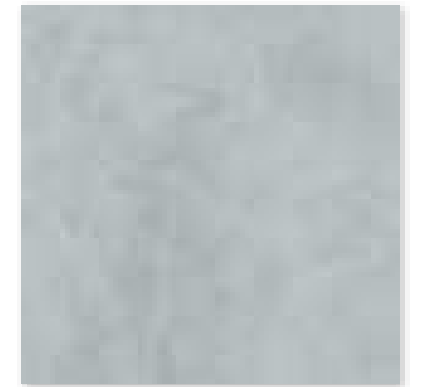
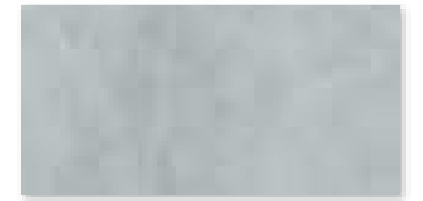
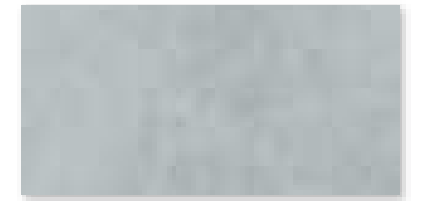
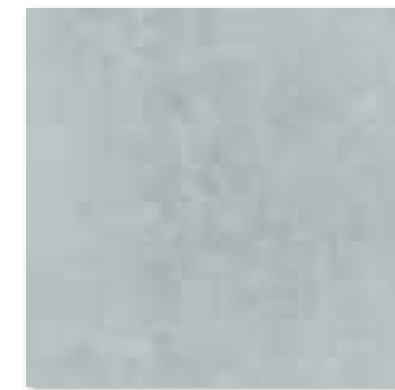
GP68845 600x600mm



GP63848



GP68848



600x300mm

600x300mm

PACKING DETAILS

Size/mm	Thickness/mm	pieces/box	m2/box	kgs/box	boxes/pallet
600x300	8.7	8	1.44	28	40
600x600	8.7	4	1.44	28	40



Many faces

# DACIA SERIES

GLAZED POLISH - COLOR BODY



GP63068 600x300 mm  
GP68068 600x600 mm

GP63065 600x300 mm  
GP68065 600x600 mm

GP63062 600x300 mm  
GP68062 600x600 mm

PACKING DETAILS

Size/mm	Thickness/mm	pieces/box	m2/box	kgs/box	boxes/pallet
600x300	8.7	8	1.44	28	40
600x600	8.7	4	1.44	28	40



Many faces

# SIDNEY SERIES

GLAZED POLISH - COLOR BODY



GP63865 600x300 mm



GP63862 600x300 mm



GP63866 600x300 mm



GP63867 600x300 mm



GP63869 600x300 mm

PACKING DETAILS

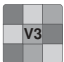





Size/mm	Thickness/mm	pieces/box	m2/box	kgs/box	boxes/pallet
600x300	8.7	8	1.44	28	40

# 03. ABRASION

DOUBLE LOADING  
NATURAL TILES

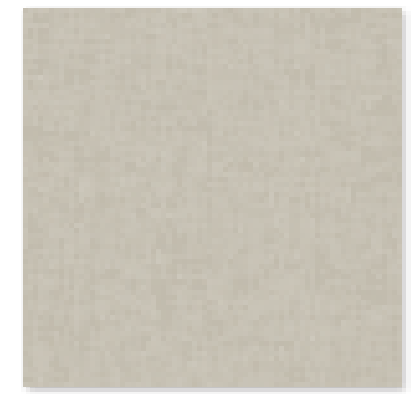










**Many faces**

# LAVIE SERIES

DOUBLE LOADING NATURAL TILES



G68030 600x600mm



G68031 600x600mm



G68037 600x600mm

PACKING DETAILS

Size/mm	Thickness/mm	pieces/box	m2/box	kgs/box	boxes/pallet
600x600	8.7	4	1.44	28	40





Many faces

# MOKA SERIES

DOUBLE LOADING NATURAL TILES



G68043

600x600 mm

G68941

600x600 mm

#### PACKING DETAILS

Size/mm	Thickness/mm	pieces/box	m2/box	kgs/box	boxes/pallet
600x600	8.7	4	1.44	28	40





Many faces

# KIMBERLITE SERIES

DOUBLE LOADING NATURAL TILES



<b>G63845</b>	600x300mm	<b>G63848</b>	600x300mm	<b>G63849</b>	600x300mm
<b>G68845</b>	600x600mm	<b>G68848</b>	600x600mm	<b>G68849</b>	600x600mm
<b>G12845</b>	1200x600mm	<b>G12848</b>	1200x600mm	<b>G12849</b>	1200x600mm

#### PACKING DETAILS

Size/mm	Thickness/mm	pieces/box	m2/box	kgs/box	boxes/pallet
600x300	8.7	8	1.44	28	40
600x600	8.7	4	1.44	28	40
1200x600	10.5	2	1.44	35	38



Many faces

# DACIA SERIES

DOUBLE LOADING NATURAL TILES



G63068 600x300 mm  
G68068 600x600 mm

G63065 600x300 mm  
G68065 600x600 mm

G63062 600x300 mm  
G68062 600x600 mm

PACKING DETAILS

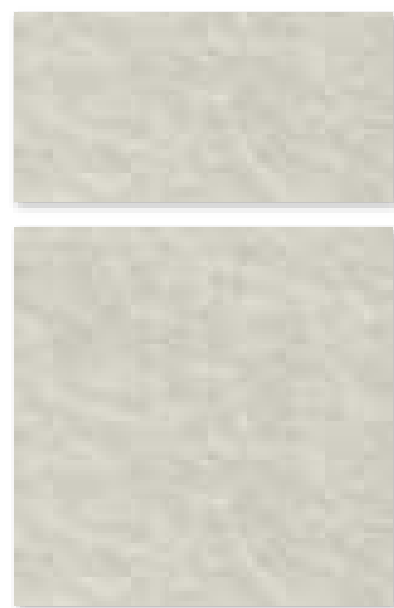
Size/mm	Thickness/mm	pieces/box	m2/box	kgs/box	boxes/pallet
600x300	6.7	8	1.44	28	40
600x600	8.7	4	1.44	28	40



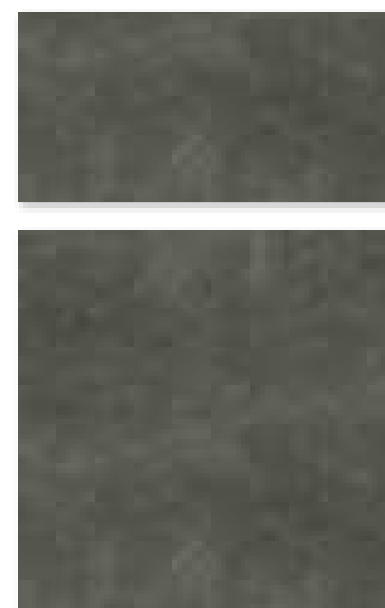
Many faces

# TRANSFORM SERIES

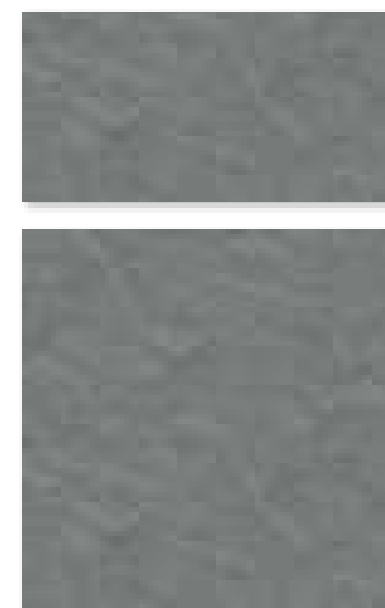
DOUBLE LOADING NATURAL TILES



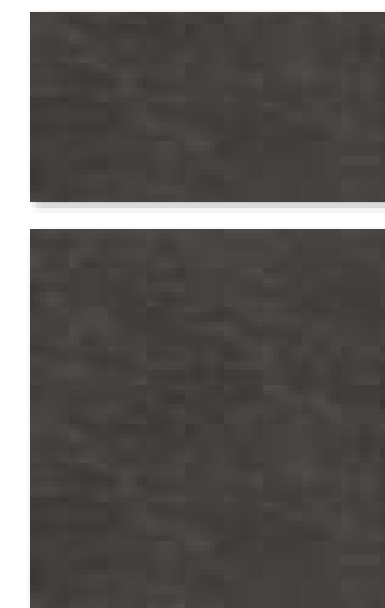
G63763 600x300mm  
G68763 600x600mm



G63764 600x300mm  
G68764 600x600mm



G63768 600x300mm  
G68768 600x600mm



G63769 600x300mm  
G68769 600x600mm

Dòng sản phẩm đồng chất Transform - sự kết hợp hoàn hảo của các tính năng kỹ thuật cao và lựa chọn thiết kế vô cùng hiện đại với công nghệ in kỹ thuật số đã cho ra bộ sưu tập mới với những đường nét hoa văn đa dạng tự nhiên của những viên đá bị bào mòn. Với bề mặt gồ ghề, dòng sản phẩm này thích hợp cho không gian trong nhà lẫn ngoài trời, ngay cả trong điều kiện khí hậu không lý tưởng, làm giảm nguy cơ trơn trượt

*Transform Series, homogeneous Porcelain Tiles with the perfect combination of high-tech features and a choice of modern design with digital printing technology is launched. It is a new collection with the variety of natural patterns of eroded stones. With the structure finish - This series is suitable for the application of both indoors outdoors. The anti-slip rate is good enough for outdoor areas in bad weather days also.*

PACKING DETAILS

Size/mm	Thickness/mm	pieces/box	m2/box	kgs/box	boxes/pallet
600x300	8.7	8	1.44	28	40
600x600	8.7	4	1.44	28	40



Many faces

# PRAISE SERIES

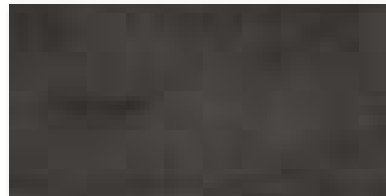
DOUBLE LOADING NATURAL TILES



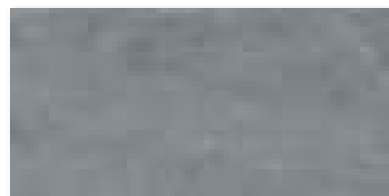
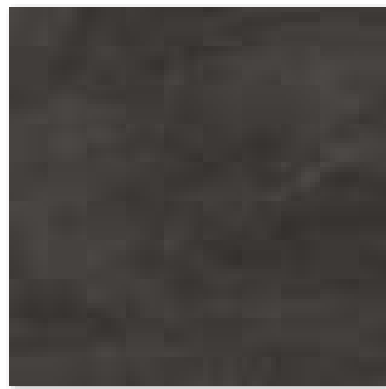
Mỗi dòng sản phẩm có một câu chuyện. Câu chuyện của chúng tôi bắt nguồn từ các hiện tượng tự nhiên. Khoảnh khắc những tia chớp như xé toang bầu trời trước mỗi cơn mưa đã vô tình làm nên điều kỳ diệu. Taicera áp dụng thiết kế tia chớp trên gạch đồng chất như một cách để tận hưởng và quảng bá vẻ đẹp của thiên nhiên.



G6373M2 600x300 mm  
G6873M2 600x600 mm



G6374M2 600x300 mm  
G6874M2 600x600 mm



G6377M2 600x300 mm  
G6877M2 600x600 mm



G6378M2 600x300 mm  
G6878M2 600x600 mm



Each product line has a story. Our stories are rooted in natural phenomena. The moment when lightning seemed to tear the sky apart before each rain, it unintentionally made a miracle. Taicera applies lightning design on homogeneous bricks as a way to enjoy and promote the beauty of nature.

PACKING DETAILS

Size/mm	Thickness/mm	pieces/box	m2/box	kgs/box	boxes/pallet
600x300	8.7	8	1.44	28	40
600x600	8.7	4	1.44	28	40



Many faces

# NATURE SERIES

DOUBLE LOADING NATURAL TILES



<b>G63818</b>	600x300 mm	<b>G63819</b>	600x300 mm
<b>G68818</b>	600x600 mm	<b>G68819</b>	600x600 mm

PACKING DETAILS

Size/mm	Thickness/mm	pieces/box	m2/box	kgs/box	boxes/pallet
600x300	8.7	8	1.44	28	40
600x600	8.7	4	1.44	28	40

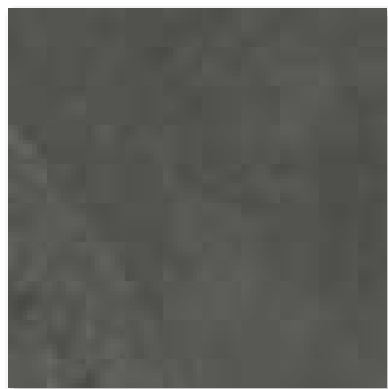


Many faces



# MIX STONE SERIES

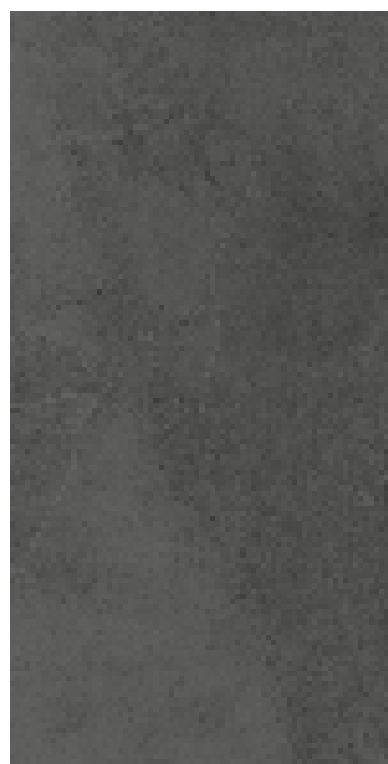
DOUBLE LOADING NATURAL TILES



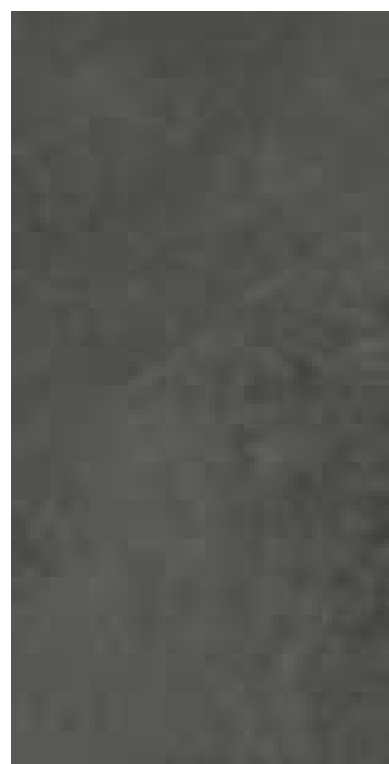
- G63MXGA 600x300 mm
- G68MXGA 600x600 mm
- G98MXGA 900x900 mm

*Bằng việc phối trộn thiết kế xi măng với vân đá nứt, dòng sản phẩm này bắt kịp xu hướng về thiết kế gạch của thế giới, ở thời đại khi mà thiết kế không chỉ đơn thuần là những hoa văn riêng lẻ, mà là sự kết hợp của nhiều loại hoa văn lại với nhau tạo nên tính phong phú, thời thượng nhưng vẫn giữ được bản sắc của thiết kế truyền thống.*

*By blending cement design with cracked stone veins, this product line catches up with the world's trend of brick design, In an era when design is not just individual patterns, but a combination of many types of patterns together to create richness and fashion, but still retain the identity of traditional design. .*



G12MXGA 1200x600 mm



G12MXGA 1200x600 mm



G12MXGA 1200x600 mm



PACKING DETAILS

Size/mm	Thickness/mm	pieces/box	m2/box	kgs/box	boxes/pallet
600x300	8.7	8	1.44	28	40
600x600	8.7	4	1.44	28	40
900x900	10.5	2	1.62	38	40
1200x600	10.5	2	1.44	35	38



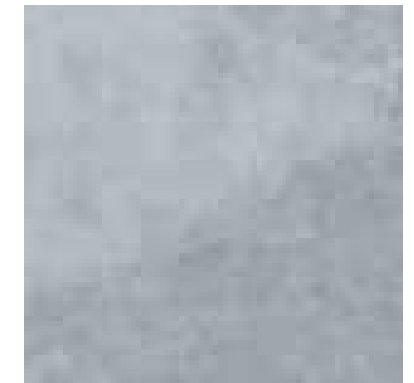
Many faces

# MIX STONE SERIES

DOUBLE LOADING NATURAL TILES



G63MXBL 600x300 mm  
 G68MXBL 600x600 mm  
 G98MXBL 900x900 mm



G63MXGR 600x300 mm  
 G68MXGR 600x600 mm  
 G98MXGR 900x900 mm



G12MXBL 1200x600 mm



G12MXGR 1200x600 mm

PACKING DETAILS

Size/mm	Thickness/mm	pieces/box	m2/box	kgs/box	boxes/pallet
600x300	8.7	8	1.44	28	40
600x600	8.7	4	1.44	28	40
900x900	10.5	2	1.62	38	40
1200x600	10.5	2	1.44	35	38



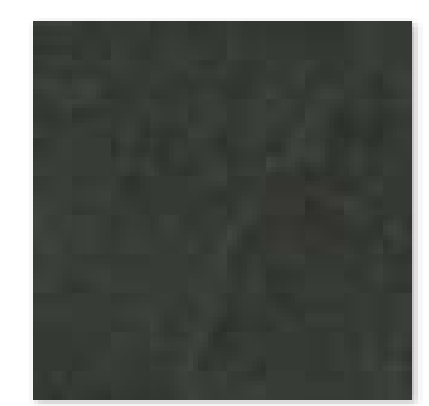


# STAR SERIES

DOUBLE LOADING NATURAL TILES



G68S67 600x600 mm



G68S69 600x600 mm

PACKING DETAILS

Size/mm	Thickness/mm	pieces/box	m2/box	kgs/box	boxes/pallet
600x600	8.7	4	1.44	28	40

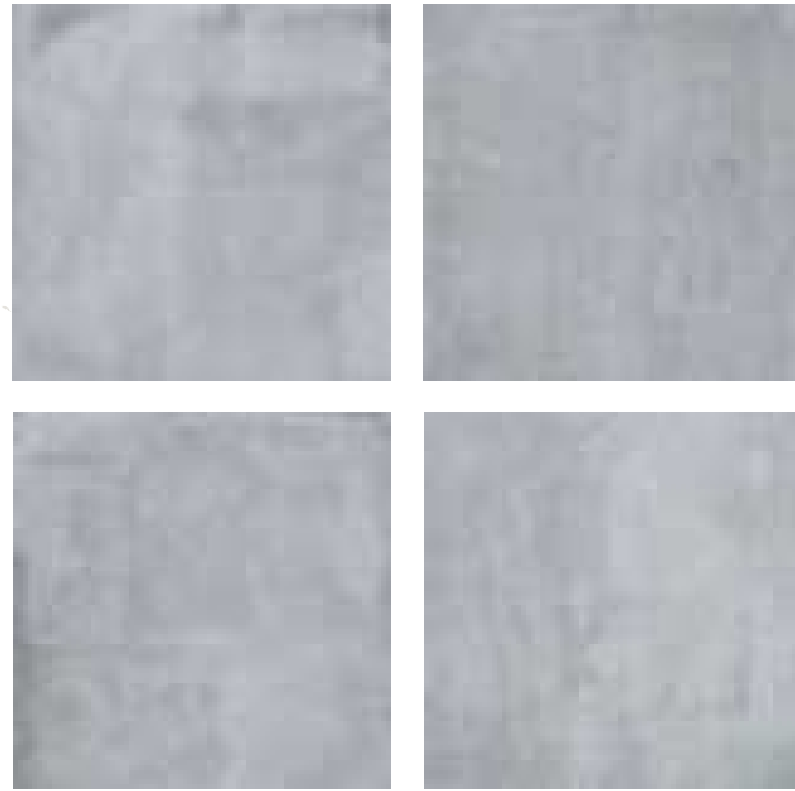


Many faces



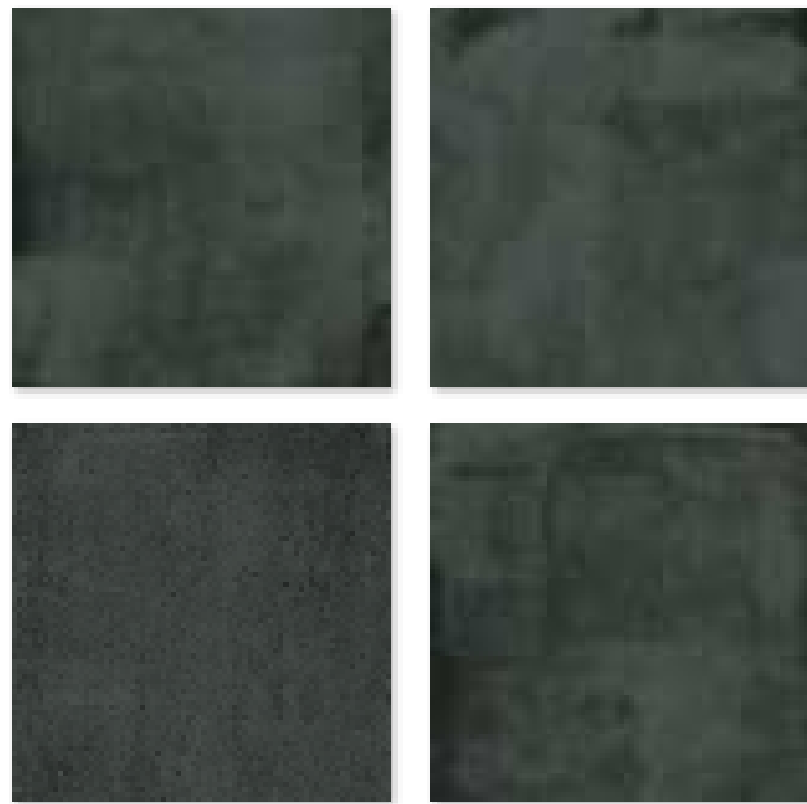
# BRUSH SERIES

DOUBLE LOADING NATURAL TILES



G68828

600x600 mm



G68824

600x600 mm



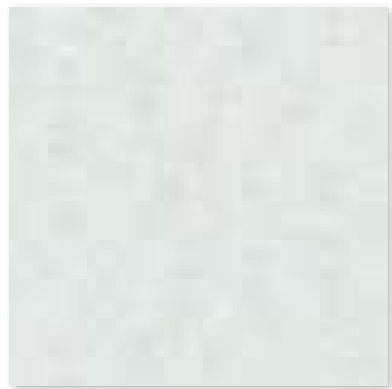
PACKING DETAILS

Size/mm	Thickness/mm	pieces/box	m2/box	kgs/box	boxes/pallet
600x600	8.7	4	1.44	28	40

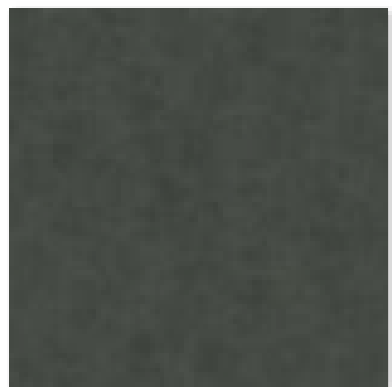


# CERRAZZO SERIES

DOUBLE LOADING NATURAL TILES



G68088 600x600 mm  
G88088 800x800 mm

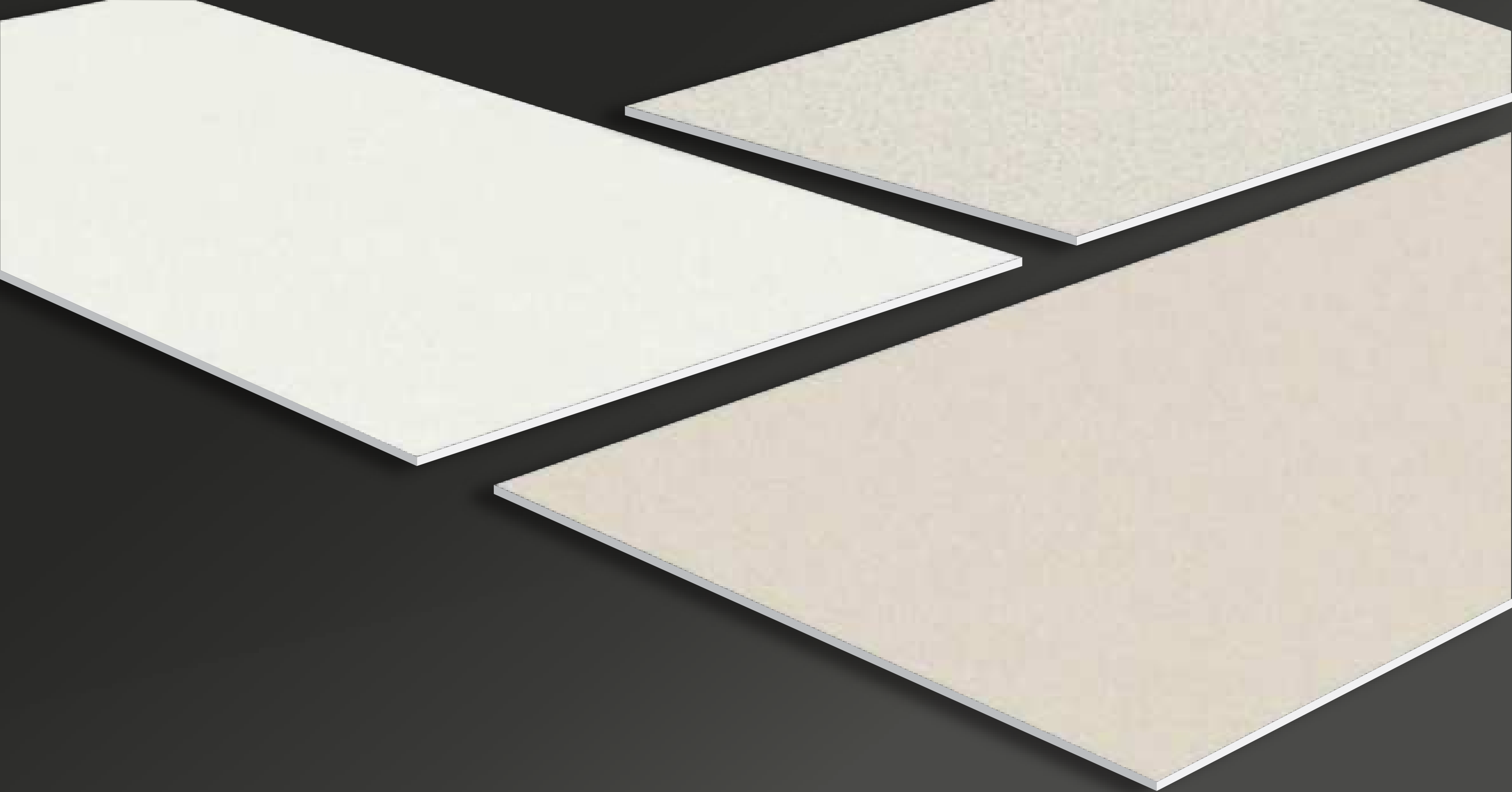


G68089 600x600 mm  
G88089 800x800 mm



PACKING DETAILS

Size/mm	Thickness/mm	pieces/box	m2/box	kgs/box	boxes/pallet
600x600	8.7	4	1.44	28	40
800x800	10.5	3	1.92	45	30

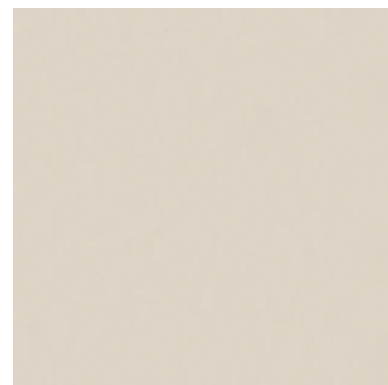


**04.** **ABRASION**  
HOVE SERIES



# HOVE SERIES

DOUBLE LOADING NATURAL TILES & FULL BODY RUSTIC TILES



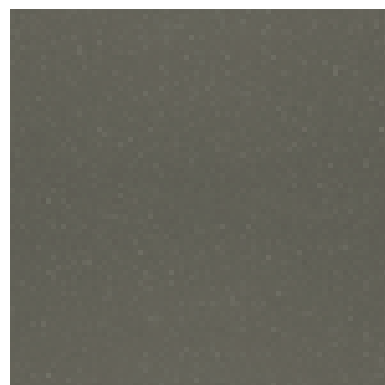
G39034 300x300 mm  
 G49034 400x400 mm  
 G63034 600x300 mm  
 G68034 600x600 mm  
 G88034 800x800 mm



G49001 400x400 mm  
 G68001 600x600 mm



G49005 400x400 mm  
 G68005 600x600 mm  
 G88005 800x800 mm



G68008 600x600 mm



G63015 600x300 mm



G63007 600x300 mm



#### PACKING DETAILS

Size/mm	Thickness/mm	pieces/box	m2/box	kgs/box	boxes/pallet
300x300	7.7	11	0.99	16	66
400x400	7.7	8	1.28	21	64
600x300	8.7	8	1.44	28	40
600x600	8.7	4	1.44	28	40
800x800	10.5	3	1.92	45	30



**05. ABRASION**  
POLISH GRANITE TILES

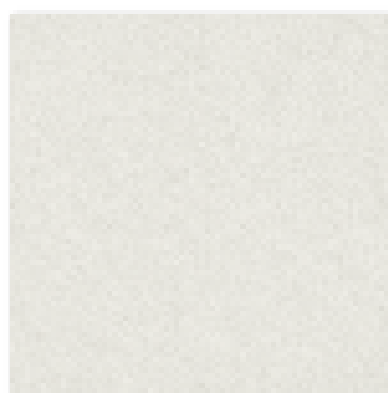


# MULTI-PIPE SERIES

Polished Granite Tiles - NANO Technology

MULTI-PIPE series - sự đơn giản cộng thêm một chút phá cách với những đường nét hoa văn dạng vân mây tạo nên nét hiện đại cho không gian nội thất tao nhã và nhấn mạnh nét tinh tế của người sử dụng.

*MULTI-PIPE series - simplicity with a twist of lines the rattan pattern creates a modern look for an elegant interior space and emphasize the subtlety of the user.*



P67542N 600x600 mm



P67543N 600x600 mm



PACKING DETAILS

Size/mm	Thickness/mm	pieces/box	m2/box	kgs/box	boxes/pallet
600x600	8.7	4	1.44	27	40



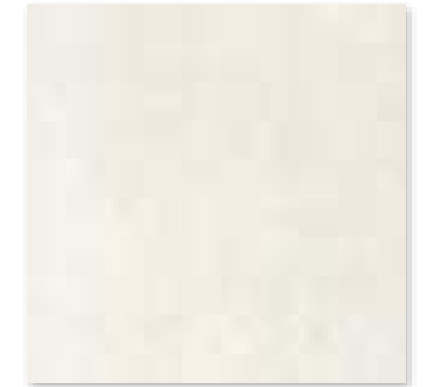


# CRYSTAL POWDER SERIES

Polished Granite Tiles - NANO Technology



Crystal power - dòng sản phẩm được lấy cảm hứng từ đặc tính trong suốt và bắt sáng của pha lê tạo nên những tinh thể lấp lánh kết hợp cùng với màu sắc hài hòa cho một không gian nội thất sang trọng và thanh lịch.



P67702N 600x600mm  
P87702N 800x800mm



P67703N 600x600mm  
P87703N 800x800mm

Crystal power - product line inspired from transparency and light characteristics of crystal creates glistening crystals combined with colors for one space luxury and elegant interior.

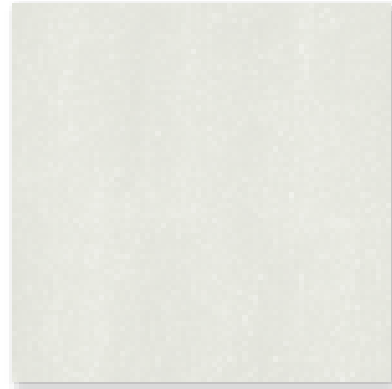
#### PACKING DETAILS

Size/mm	Thickness/mm	pieces/box	m2/box	kgs/box	boxes/pallet
600x600	8.7	4	1.44	27	40
800x800	10.5	3	1.92	45	30



# IMPERIAL SERIES

Polished Granite Tiles - NANO Technology



**P67762N** 600x600mm  
**P87762N** 800x800mm



**P67763N** 600x600mm  
**P87763N** 800x800mm

IMPERIAL - Với những vân mây rất mảnh, thanh thoát được sắp xếp ngẫu nhiên tạo ra dòng sản phẩm có nhiều lớp hoa văn nhẹ nhàng đáp ứng được thị hiếu của trong và ngoài nước về chất lượng cao cũng như các yêu cầu thẩm mỹ. Sản phẩm với 2 màu chủ đạo trắng và vàng kem, kích cỡ lớn 800x800mm và 600x600mm rất thích hợp cho những nơi sang trọng như đại sảnh, sân bay, khách sạn, công trình, nhà ở, ....

*IMPERIAL - With very strong, flexible, randomly ordered cloud ranges create a product with multiple classes of smooth textures that meet the favorites of international and international types. Products with 2 major colors white and cream gold, large size 800x800mm and 600x600mm very suitable for luxury places like load, airport, hotel, construction, house, ....*

PACKING DETAILS

Size/mm	Thickness/mm	pieces/box	m2/box	kgs/box	boxes/pallet
600x600	8.7	4	1.44	27	40
800x800	10.5	3	1.92	45	30





# FOSSIL SERIES

Polished Granite Tiles  
NANO Technology



P67202N 600x600mm  
P87202N 800x800mm



P67208N 600x600mm  
P87208N 800x800mm



Từ 137 ~ 195 triệu năm về trước, cây cối đã trải qua quá trình biến thiên địa chất, sau đó đã bị chôn vùi dưới địa tầng rồi trải qua quá trình trao đổi và bổ sung cho nhau. Dưới tác dụng của nước ngầm hóa học các vật chất này kết tinh lắng tụ trong bộ phận chất gỗ của cây, làm cho lớp kết cấu ban đầu của cây được giữ lại, từ đó đã hình thành nên GỖ HÓA THẠCH ỐP LÁT: Thích hợp để ốp tường, lát nền các khu biệt thự, khách sạn, văn phòng, đại sảnh, khu dân cư cao cấp,...tạo nên sự ấn tượng và sang trọng cho ngôi nhà của bạn.

Millions of years ago, in the Pre-historic Age, trees went through geological changes, and some were buried in the ground. These buried trees experienced some chemical exchange and filling effects. These chemicals crystallized inside the trees and changed the woody parts of trees, but it kept the original structure of the trees, and became wood fossils. Paving Applications: Luxury villas, homes; walls, floors, Star Hotel, High Level Office Space, Stairways, and other high level places.



PACKING DETAILS

Size/mm	Thickness/mm	pieces/box	m2/box	kgs/box	boxes/pallet
600x600	8.7	4	1.44	27	40
800x800	10.5	3	1.92	45	30



# JADE DIAMOND

Polished Granite Tiles - NANO Technology



P67662N 600x600mm  
P87662N 800x800mm



P67663N 600x600mm  
P87663N 800x800mm



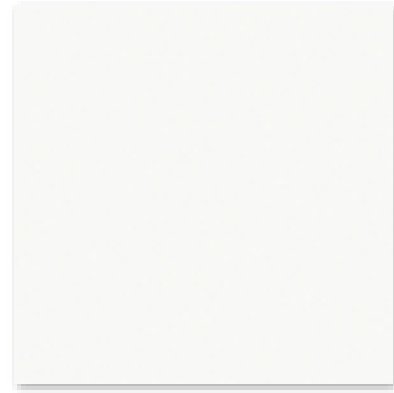
PACKING DETAILS

Size/mm	Thickness/mm	pieces/box	m2/box	kgs/box	boxes/pallet
600x600	8.7	4	1.44	27	40
800x800	10.5	3	1.92	45	30

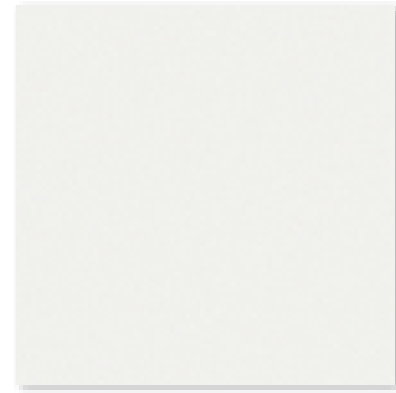


# UNICOLORED SERIES

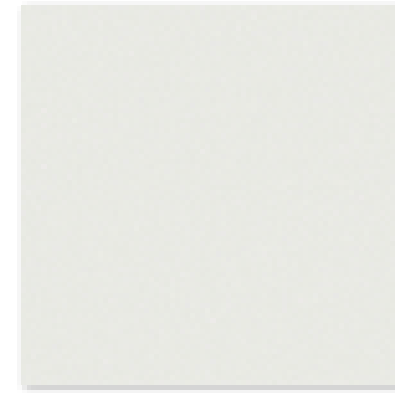
Polished Granite Tiles - NANO Technology



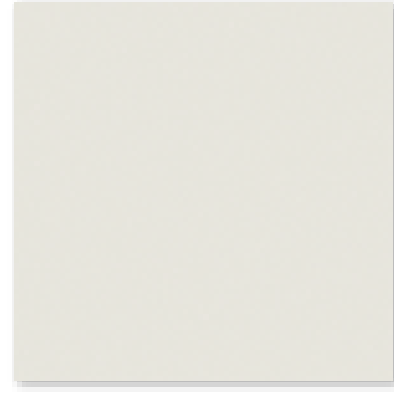
**P67675G** 600x600mm



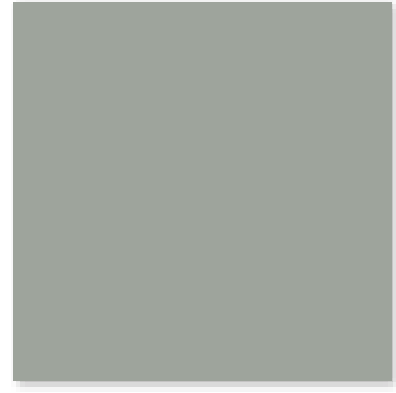
**P67615N** 600x600 mm  
**P87615N** 800x800 mm



**P67665G** 600x600mm



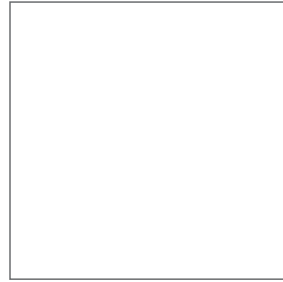
**P67625N** 600x600 mm  
**P87625N** 800x800 mm



**P67668G** 600x600mm



Body Polish, Double Loading  
**P67039G** 600x600mm



800x800 mm



600x600 mm

PACKING DETAILS					
Size/mm	Thickness/mm	pieces/box	m2/box	kgs/box	boxes/pallet
600x600	8.7	4	1.44	27	40
800x800	10.5	3	1.92	45	30

Không hoa văn rườm rà, không màu sắc nổi bật nhưng vẫn đem lại nét thanh lịch, sang trọng cần có cho một không gian kiến trúc cao cấp đó là dòng sản phẩm UNICOLORED

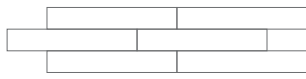
*No cumbersome patterns, no outstanding colors but still bring the elegance and luxury needed for a high-class architectural space that is the UNICOLORED product line.*





06.

WOOD  
DESIGN TILES



## CEDAR WOOD

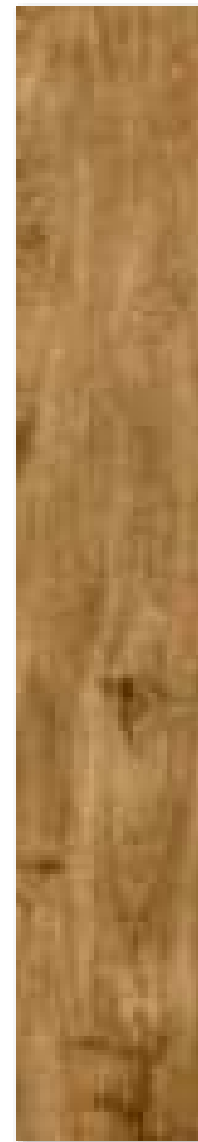
Glazed Porcelain Tiles



GC900\*150-927

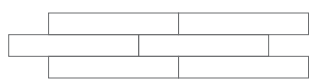


GC900\*150-926



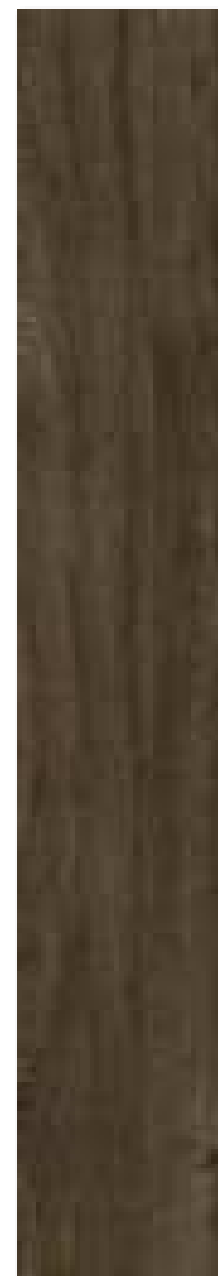


Many faces



# CEDAR WOOD

Glazed Porcelain Tiles



GC200x1200-921

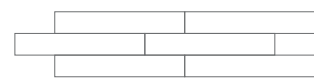


GC200x1200-923

PACKING DETAILS

Size/mm	Thickness/mm	pieces/box	m2/box	kgs/box	boxes/pallet
1200x200	10.5	6	1.44	35	45





# CEDAR WOOD

Glazed Porcelain Tiles



GC600x148-921



GC600x148-923



PACKING DETAILS

Size/mm	Thickness/mm	pieces/box	m2/box	kgs/box	boxes/pallet
600x148	8.7	15	1.35	28	48





07.

# 20mm FULL BODY TILES



Many faces

## JDD20MM SERIES

Full Body Rustic Tiles & Anti Slip



G68528JDD 600x600mm



G63528JDD 600x300mm  
G12528JDD 1200x600mm



G63529JDD 600x300mm  
G12529JDD 1200x600mm



G68529JDD 600x600mm



PACKING DETAILS

Size/mm	Thickness/mm	pieces/box	m2/box	kgs/box	boxes/pallet
600x300	20	4	0.72	32	40
600x600	20	2	0.72	32	40
1200x600	20	1	0.72	32	38



## DD20MM SERIES

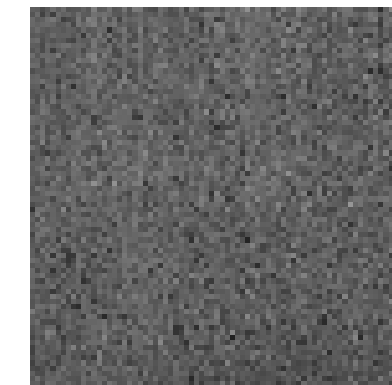
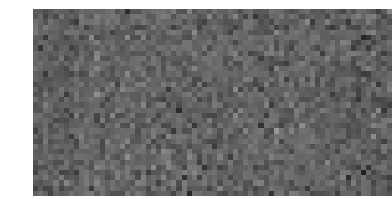
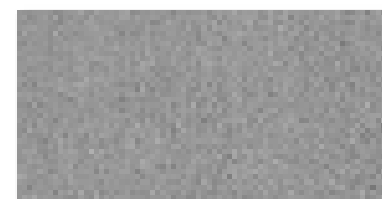
Full Body Rustic Tiles & Anti Slip

**Độ chống trượt và chống mài mòn cao R13** ngang bằng với đá tự nhiên. Trong khi những loại gạch sân vườn hệ số này chỉ có R10.

*The high anti-slip and abrasion resistance R13 is equal to that of natural stone. While normal garden tiles are only R10.*

**Độ cứng** : 10.000N, độ bền uốn: 40N/mm<sup>2</sup>. Trong khi của đá tự nhiên lần lượt là 1.200N và 18N/mm<sup>2</sup>. Tiêu chí này vượt trội so với đá tự nhiên và bỏ xa so với gạch sân vườn thông thường khi độ cứng chỉ có 600N và độ bền uốn chỉ có 20N/mm<sup>2</sup>.

*20mm tiles' Hardness 10.000, flexural strength : 40N/mm<sup>2</sup>. This criterion is superior to natural stone because those of natural stone respectively 1.200 and 18N/ mm<sup>2</sup>. And for ordinary garden tiles, the hardness is only 600N and the flexural strength is only 20N/mm<sup>2</sup>.*



G63528DD 600x300mm  
G68528DD 600x600mm

G63529DD 600x300mm  
G68529DD 600x600mm

G63541DD 600x300mm  
G68541DD 600x600mm

### PACKING DETAILS

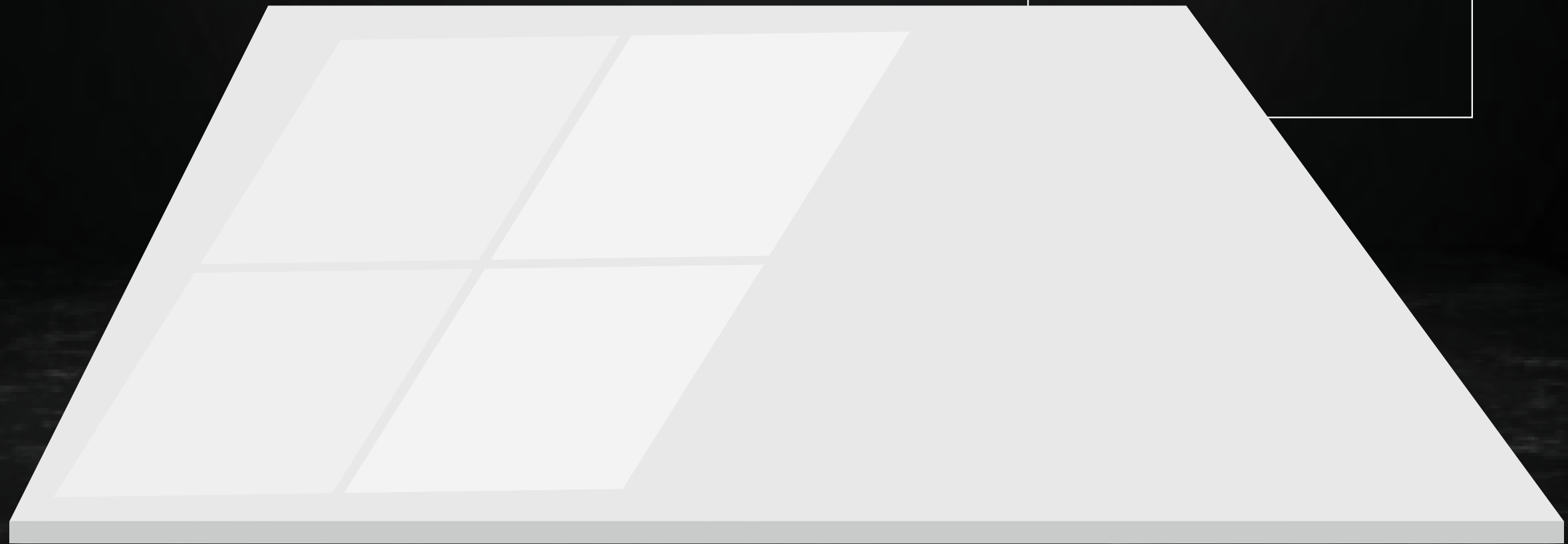
Size/mm	Thickness/mm	pieces/box	m <sup>2</sup> /box	kgs/box	boxes/pallet
600x300	20	4	0.72	32	40
600x600	20	2	0.72	32	40

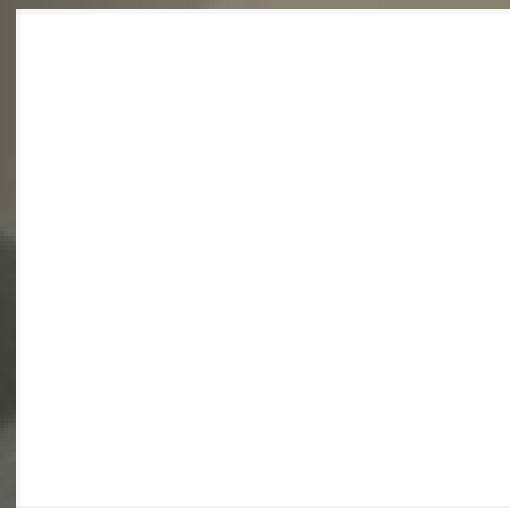
08.

SIZE 800x800 mm

**GLAZED POLISH**

*WHITE BODY*





GP88035

800x800 mm

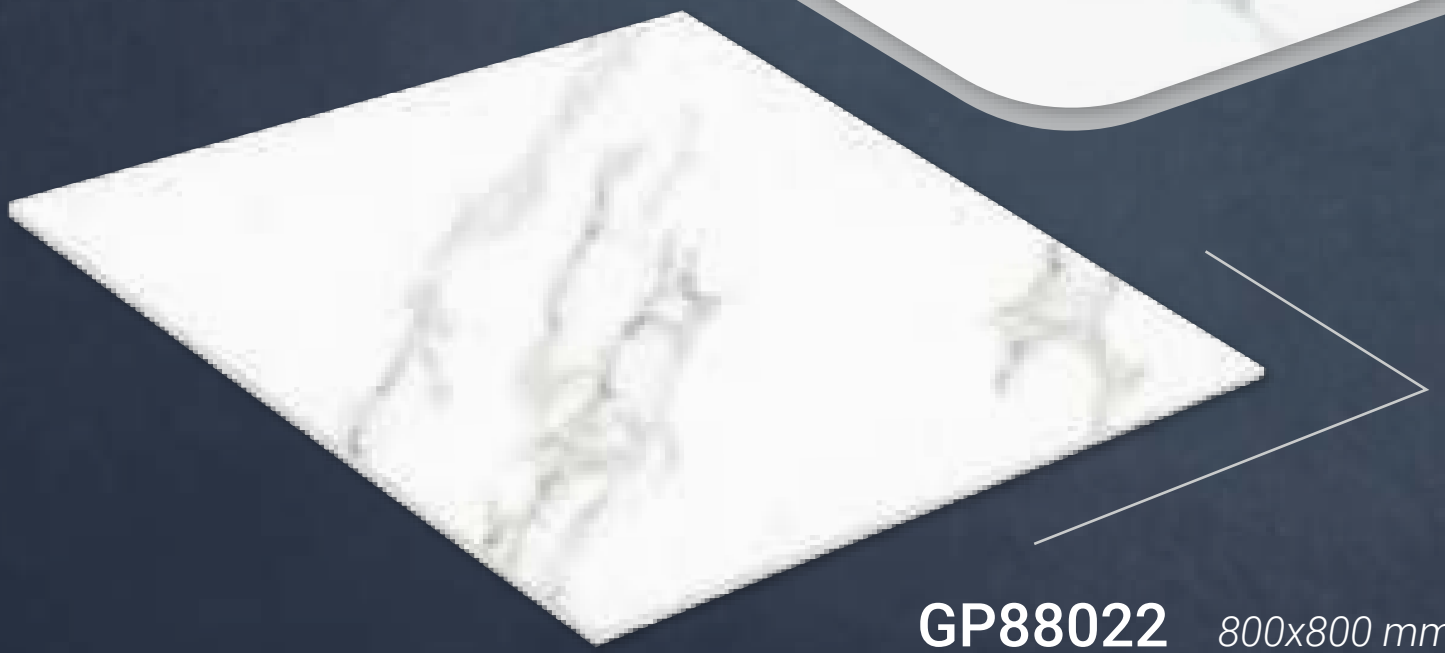


## SUPER WHITE SERIES

GLAZED POLISH TILES - WHITE BODY

### PACKING DETAILS

Size/mm	Thickness/mm	pieces/box	m2/box	kgs/box	boxes/pallet
800x800	10.5	3	1.92	45	30



**GP88022** 800x800 mm



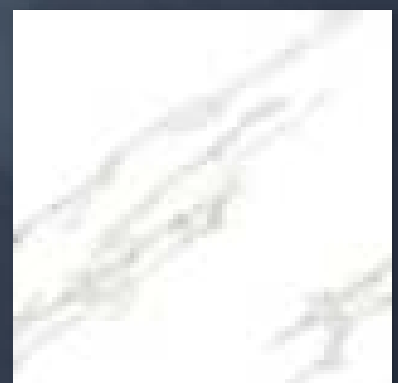
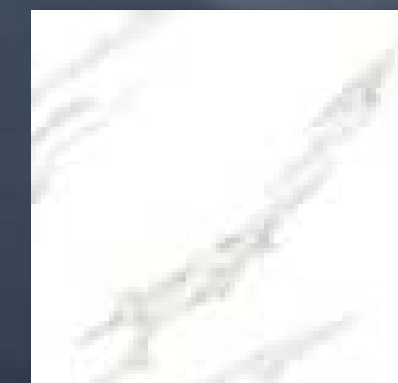
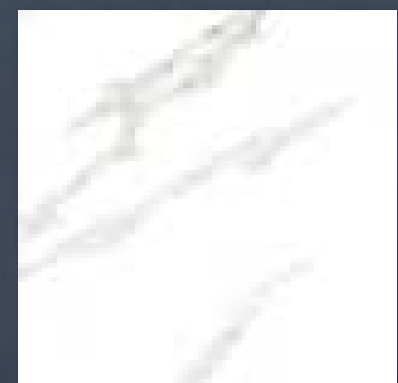
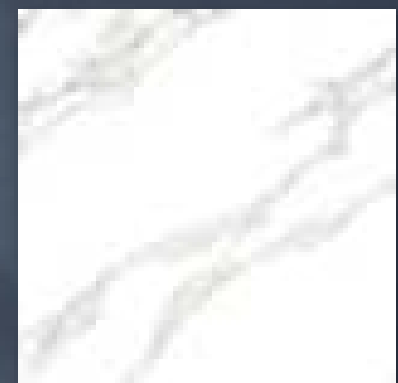




Many faces

# TRƯỜNG SA SERIES

GLAZED POLISH TILES - WHITE BODY



PACKING DETAILS

Size/mm	Thickness/mm	pieces/box	m2/box	kgs/box	boxes/pallet
800x800	10.5	3	1.92	45	30



**GP88865** 800x800 mm







**Many faces**

# HOÀNG SA SERIES

GLAZED POLISH TILES - WHITE BODY



PACKING DETAILS

Size/mm	Thickness/mm	pieces/box	m2/box	kgs/box	boxes/pallet
800x800	10.5	3	1.92	45	30





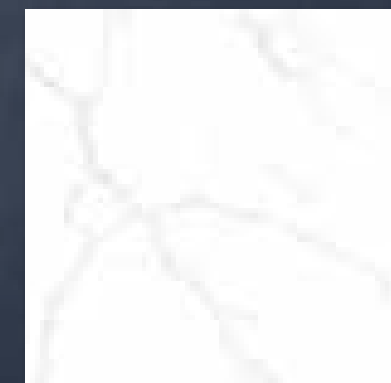
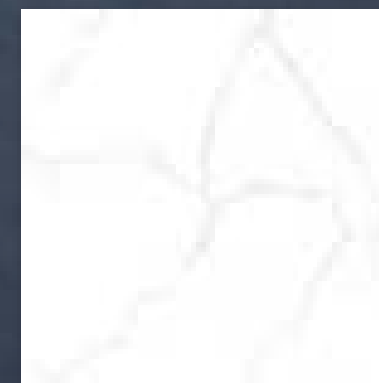
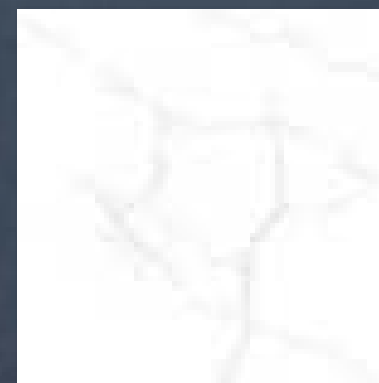
**GP88085** 800x800 mm



Many faces

# MEKONG SERIES

GLAZED POLISH TILES - WHITE BODY



PACKING DETAILS

Size/mm	Thickness/mm	pieces/box	m2/box	kgs/box	boxes/pallet
800x800	10.5	3	1.92	45	30

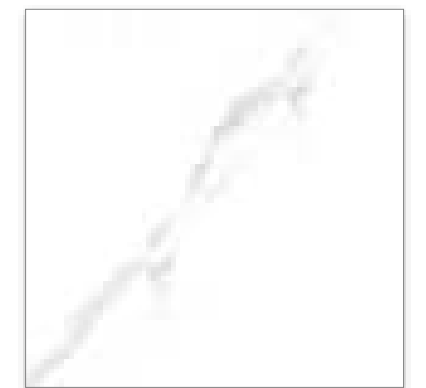
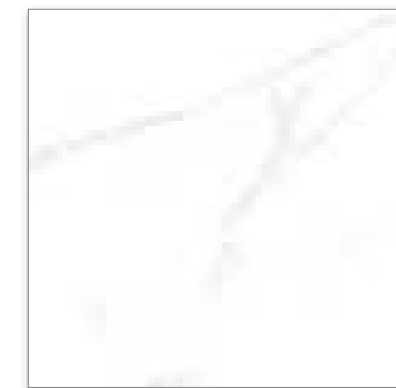
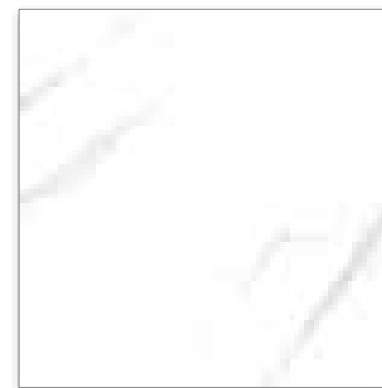


**GP88805** 800x800 mm



## RIVER SERIES

GLAZED POLISH TILES - WHITE BODY



PACKING DETAILS

Size/mm	Thickness/mm	pieces/box	m2/box	kgs/box	boxes/pallet
800x800	10.5	3	1.92	45	30

**08.**

**SIZE 800x800 mm**

**GLAZED PORCELAIN**

*COLOR BODY*



# LÁ SEN SERIES

GLAZED PORCELAIN TILES - COLOR BODY



G88L07

800x800 mm

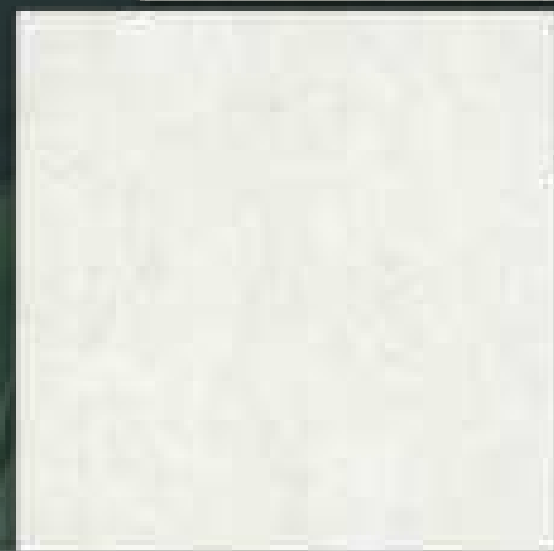
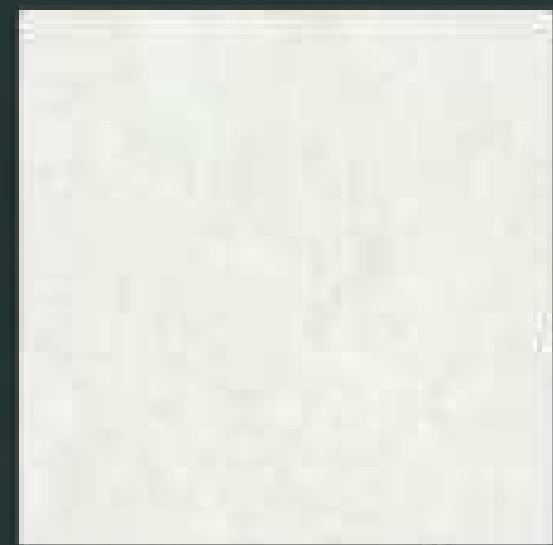


G88L08

800x800 mm

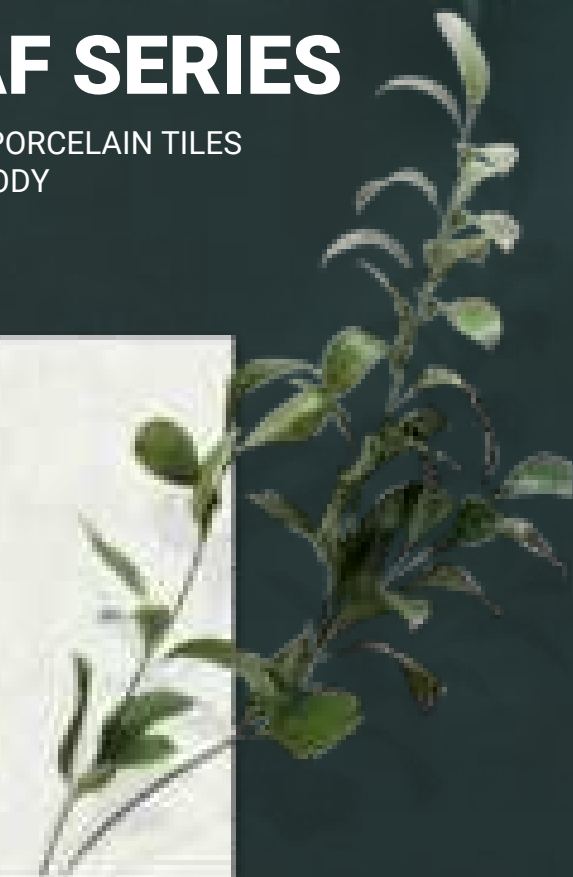
PACKING DETAILS

Size/mm	Thickness/mm	pieces/box	m2/box	kgs/box	boxes/pallet
800x800	10.5	3	1.92	45	30



## LEAF SERIES

GLAZED PORCELAIN TILES  
COLOR BODY



# LEAF SERIES



Many faces

GLAZED PORCELAIN TILES - COLOR BODY



**G88825** 800x800 mm    **G88827** 800x800 mm    **G88829** 800x800 mm



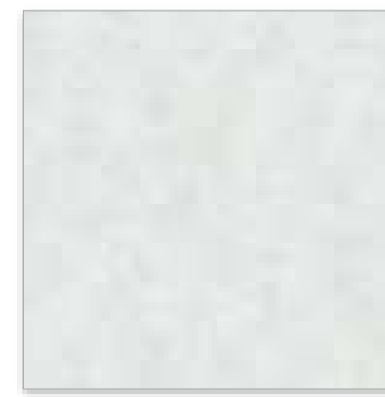
PACKING DETAILS

Size/mm	Thickness/mm	pieces/box	m2/box	kgs/box	boxes/pallet
800x800	10.5	3	1.92	45	30

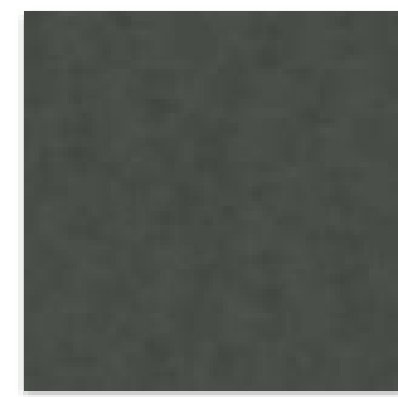


## CERRAZZO SERIES

GLAZED PORCELAIN TILES - COLOR BODY



**G88088** 800x800 mm



**G88089** 800x800 mm

PACKING DETAILS

Size/mm	Thickness/mm	pieces/box	m2/box	kgs/box	boxes/pallet
800x800	10.5	3	1.92	45	30





Many faces

# LAVIE SERIES

GLAZED PORCELAIN TILES - COLOR BODY



G88037 800x800 mm



PACKING DETAILS

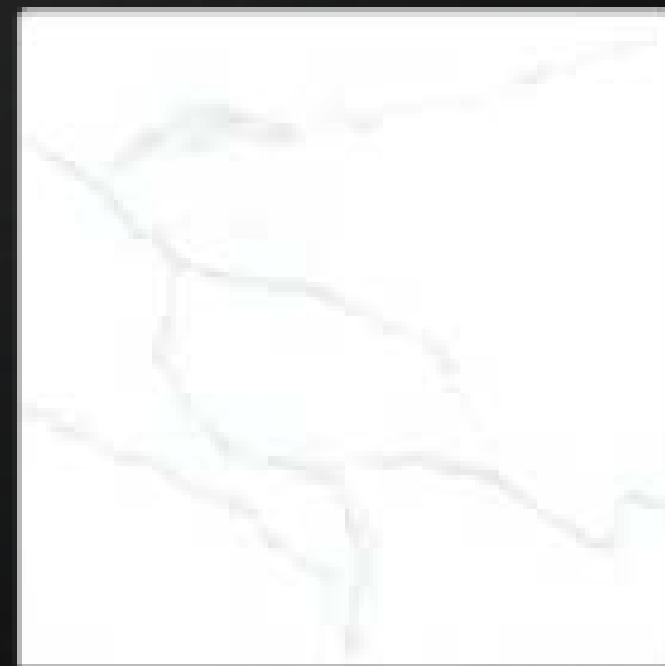
Size/mm	Thickness/mm	pieces/box	m2/box	kgs/box	boxes/pallet
800x800	10.5	3	1.92	45	30

09.

SIZE 900x900 mm

**GLAZED POLISH**

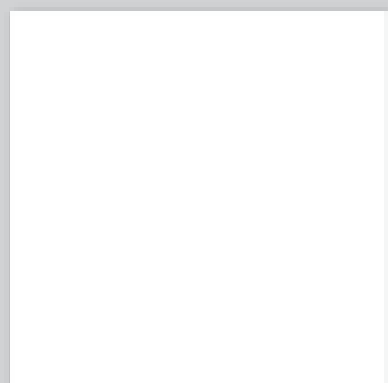
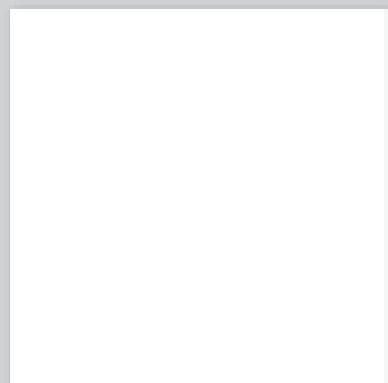
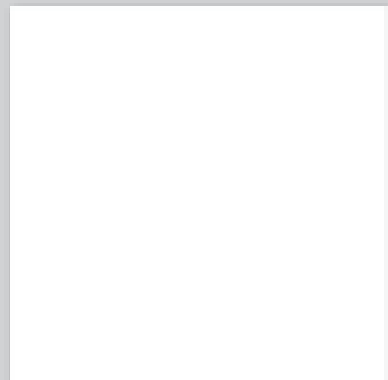
*WHITE BODY*





# SUPER WHITE SERIES

GLAZED POLISH TILES - WHITE BODY



GP98035 900x900 mm



#### PACKING DETAILS

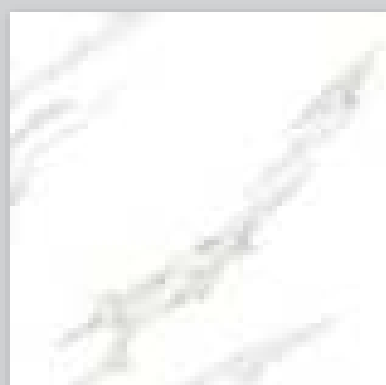
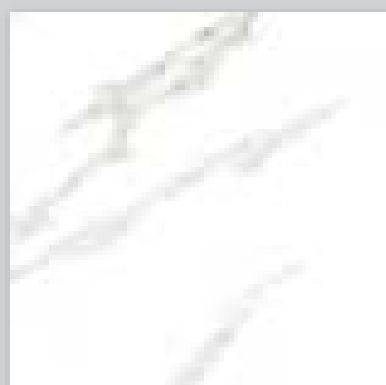
Size/mm	Thickness/mm	pieces/box	m2/box	kgs/box	boxes/pallet
900x900	10.5	2	1.62	38	40



Many faces

# TRƯỜNG SA SERIES

GLAZED POLISH TILES - WHITE BODY



GP98022 900x900 mm



PACKING DETAILS

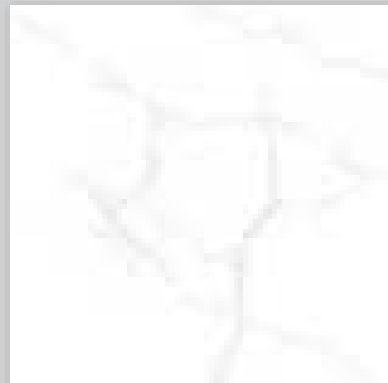
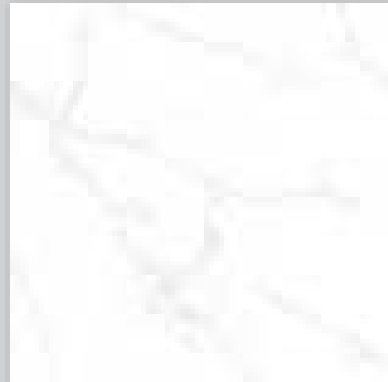
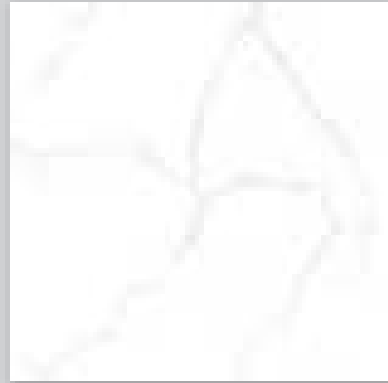
Size/mm	Thickness/mm	pieces/box	m2/box	kgs/box	boxes/pallet
900x900	10.5	2	1.62	38	40



Many faces

# MEKONG SERIES

GLAZED POLISH TILES - WHITE BODY



GP98085 900x900 mm



PACKING DETAILS

Size/mm	Thickness/mm	pieces/box	m2/box	kgs/box	boxes/pallet
900x900	10.5	2	1.62	38	40



Many faces

# RIVER SERIES

GLAZED POLISH TILES - WHITE BODY



GP98805 900x900 mm



PACKING DETAILS

Size/mm	Thickness/mm	pieces/box	m2/box	kgs/box	boxes/pallet
900x900	10.5	2	1.62	38	40

**09.**

SIZE 900x900 mm

**GLAZED PORCELAIN**

*COLOR BODY*



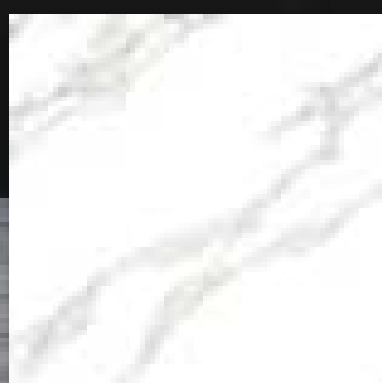
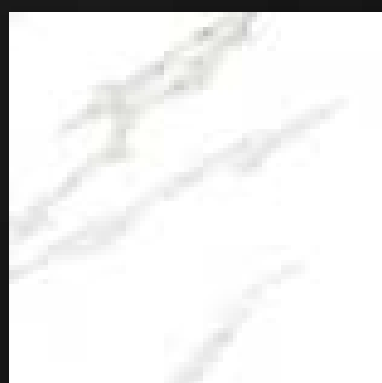
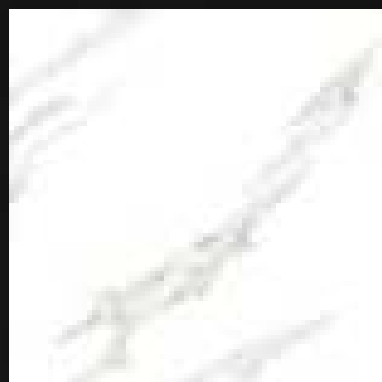




Many faces

# TRƯỜNG SA SERIES

GLAZED PORCELAIN TILES - COLOR BODY



G98022 900x900 mm



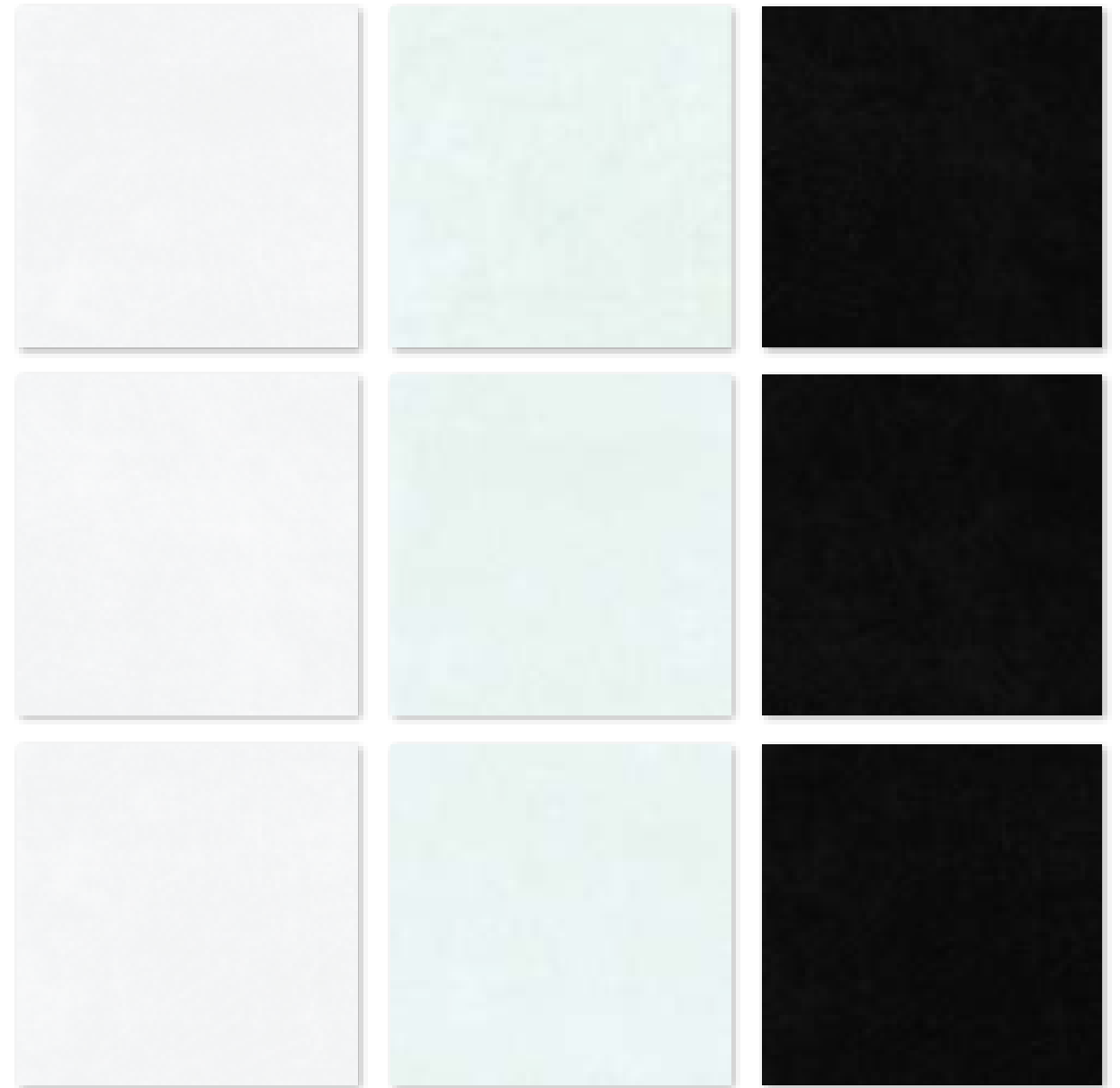
PACKING DETAILS

Size/mm	Thickness/mm	pieces/box	m2/box	kgs/box	boxes/pallet
900x900	10.5	2	1.62	38	40



# NHẢY SERIES

GLAZED PORCELAIN TILES - COLOR BODY



G98305    900x900 mm    G98308    900x900 mm    G98309    900x900 mm

PACKING DETAILS

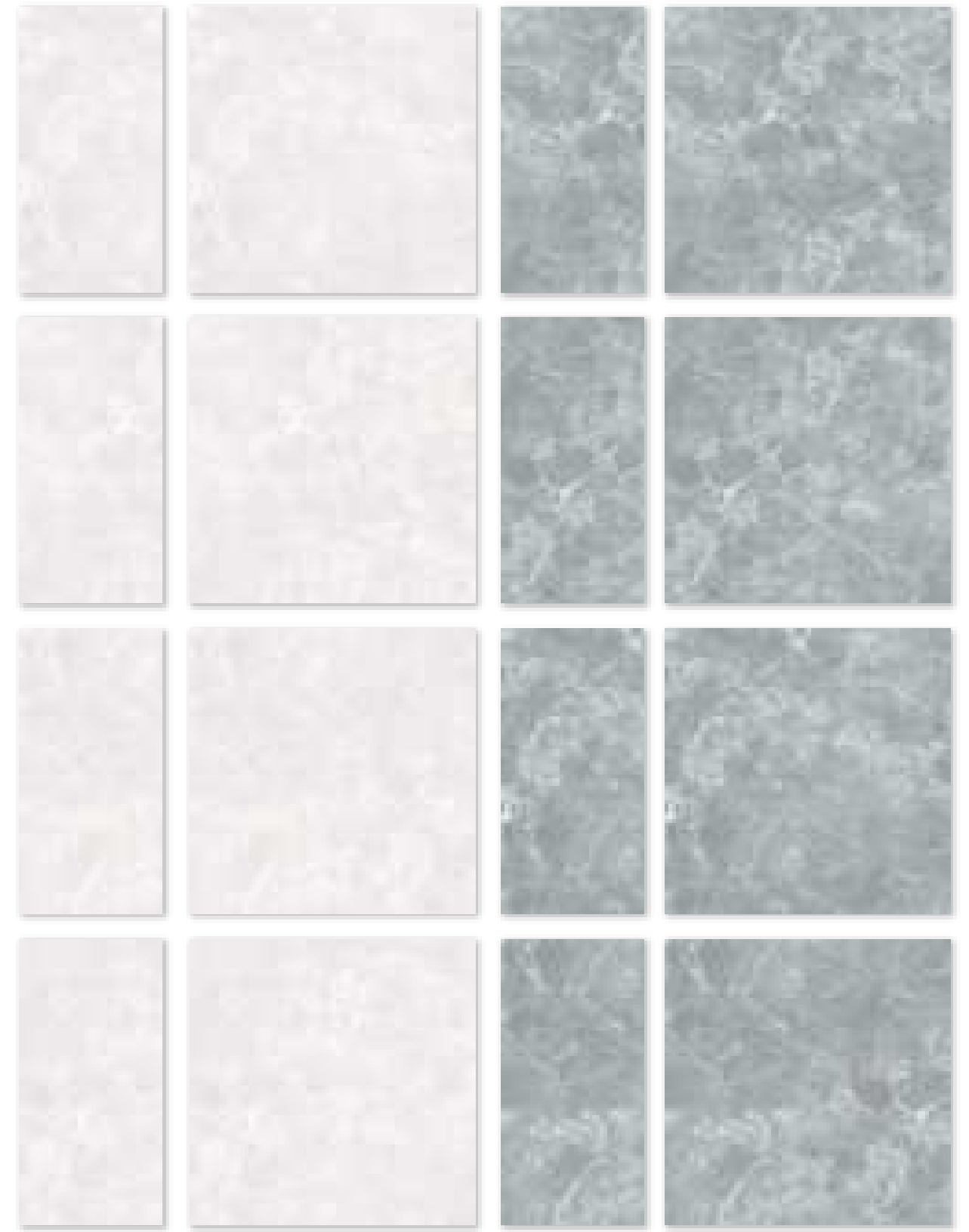
Size/mm	Thickness/mm	pieces/box	m2/box	kgs/box	boxes/pallet
900x900	10.5	2	1.62	38	40



Many faces

# SUNSHINE SERIES

GLAZED PORCELAIN TILES - COLOR BODY



900x300 mm    G98032    900x900 mm    900x300 mm    G98038    900x900 mm

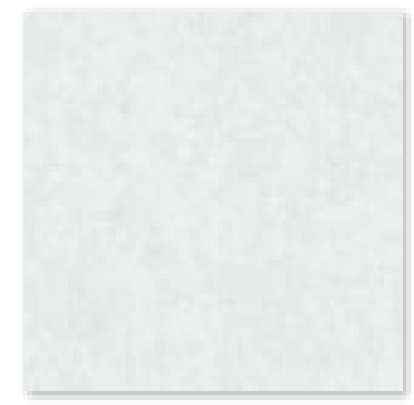
PACKING DETAILS

Size/mm	Thickness/mm	pieces/box	m2/box	kgs/box	boxes/pallet
900x900	10.5	2	1.62	38	40



# TRANSIT SERIES

GLAZED PORCELAIN TILES - COLOR BODY



**G98T15** 900x900 mm



**G98T18** 900x900 mm

PACKING DETAILS

Size/mm	Thickness/mm	pieces/box	m2/box	kgs/box	boxes/pallet
900x900	10.5	2	1.62	38	40



Many faces

# MIX STONE SERIES

GLAZED PORCELAIN TILES - COLOR BODY



G98MXBL 900x900 mm G98MXGR 900x900 m G98MXGA 900x900 mm

PACKING DETAILS

Size/mm	Thickness/mm	pieces/box	m2/box	kgs/box	boxes/pallet
900x900	10.5	2	1.62	38	40

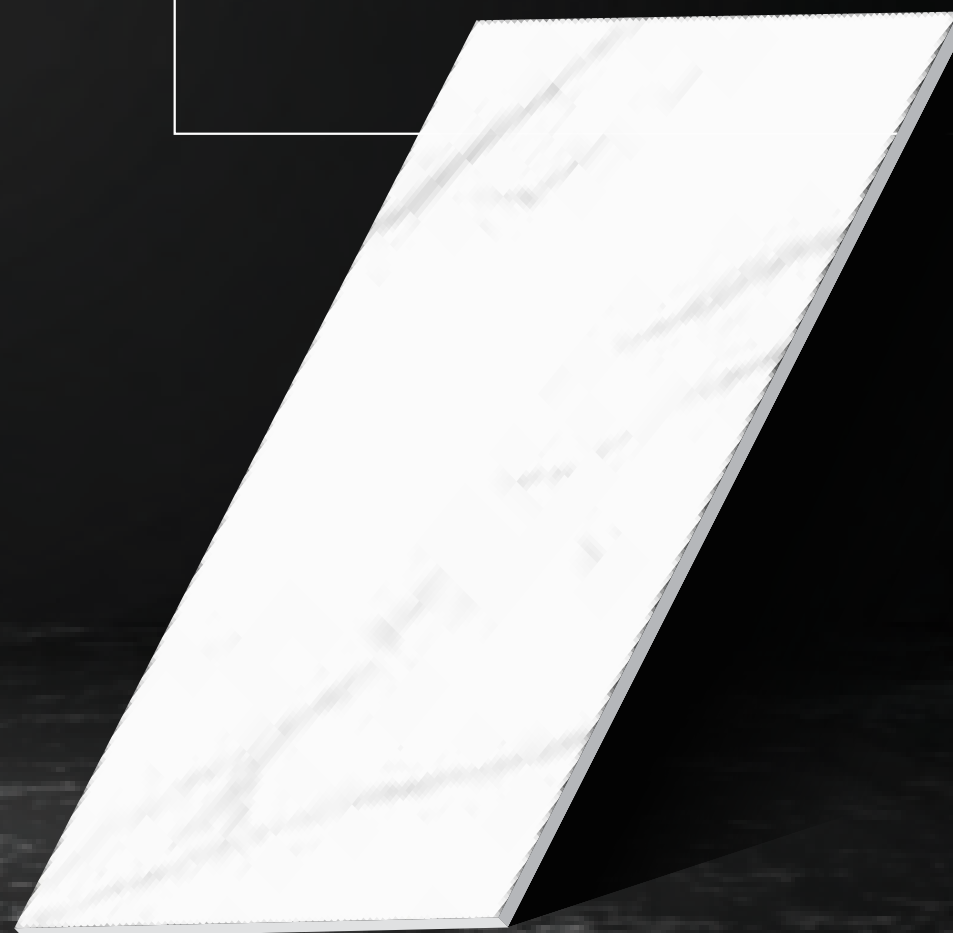


**10.**

**SIZE 600x1200 mm**

**GLAZED POLISH**

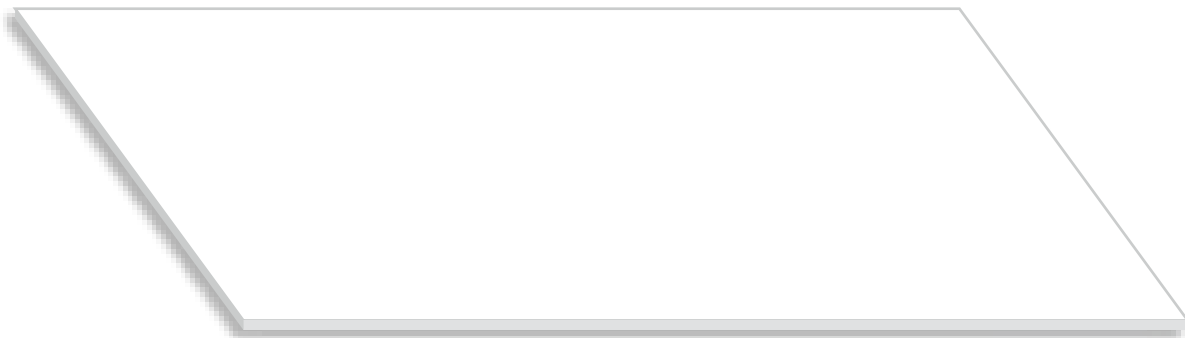
*WHITE BODY*





# SUPER WHITE SERIES

GLAZED POLISH TILES - WHITE BODY



**GP12035** 600x1200 mm



PACKING DETAILS

Size/mm	Thickness/mm	pieces/box	m2/box	kgs/box	boxes/pallet
1200x600	10.5	2	1.44	35	38





Many faces

# TRƯỜNG SA SERIES

GLAZED POLISH TILES - WHITE BODY



**GP12022** 600x1200 mm



PACKING DETAILS

Size/mm	Thickness/mm	pieces/box	m2/box	kgs/box	boxes/pallet
1200x600	10.5	2	1.44	35	38





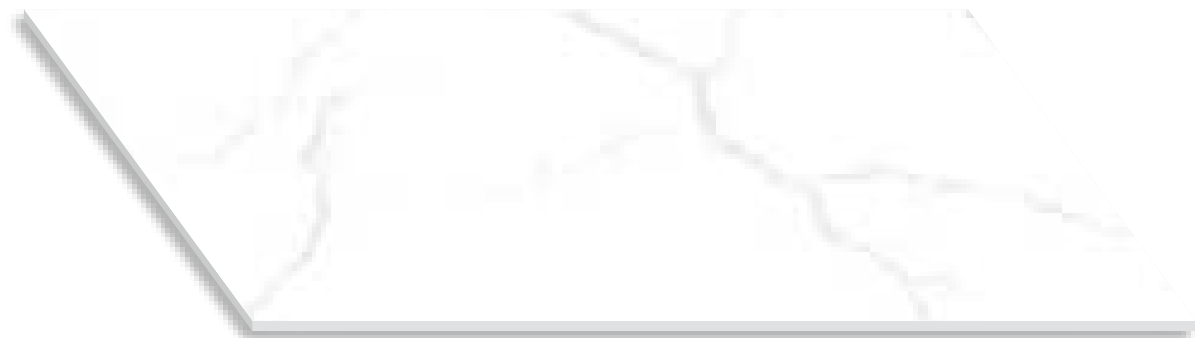




**Many faces**

# MEKONG SERIES

GLAZED POLISH TILES - WHITE BODY



GP12085 1200x600 mm



PACKING DETAILS

Size/mm	Thickness/mm	pieces/box	m2/box	kgs/box	boxes/pallet
1200x600	10.5	2	1.44	35	38





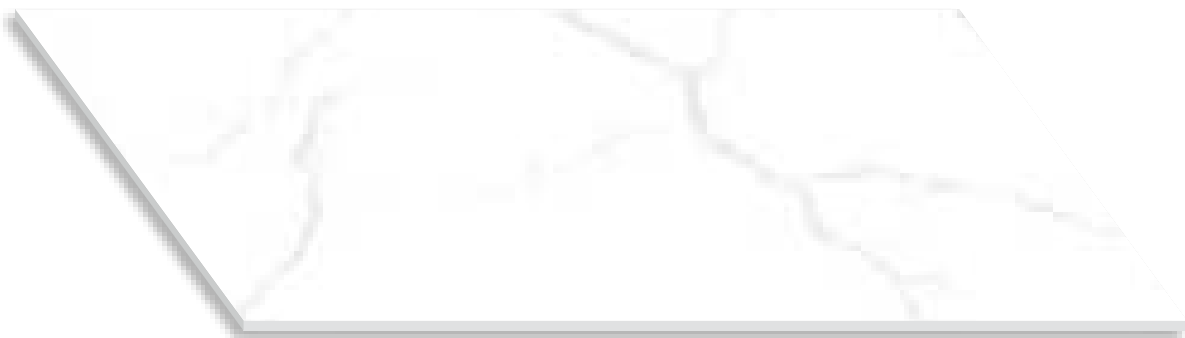




**Many faces**

# RIVER SERIES

GLAZED POLISH TILES - WHITE BODY



GP12805 1200x600mm



PACKING DETAILS

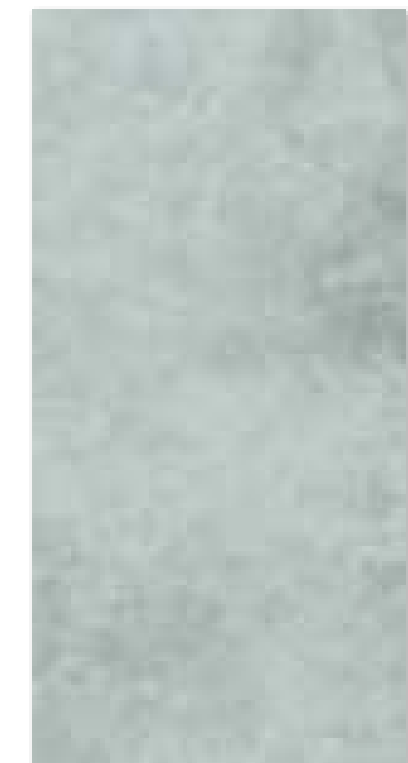
Size/mm	Thickness/mm	pieces/box	m2/box	kgs/box	boxes/pallet
1200x600	10.5	2	1.44	35	38



GP12845 1200x600mm



GP12848 1200x600mm



Many faces

# KIMBERLITE SERIES

GLAZED POLISH TILES - COLOR BODY



PACKING DETAILS

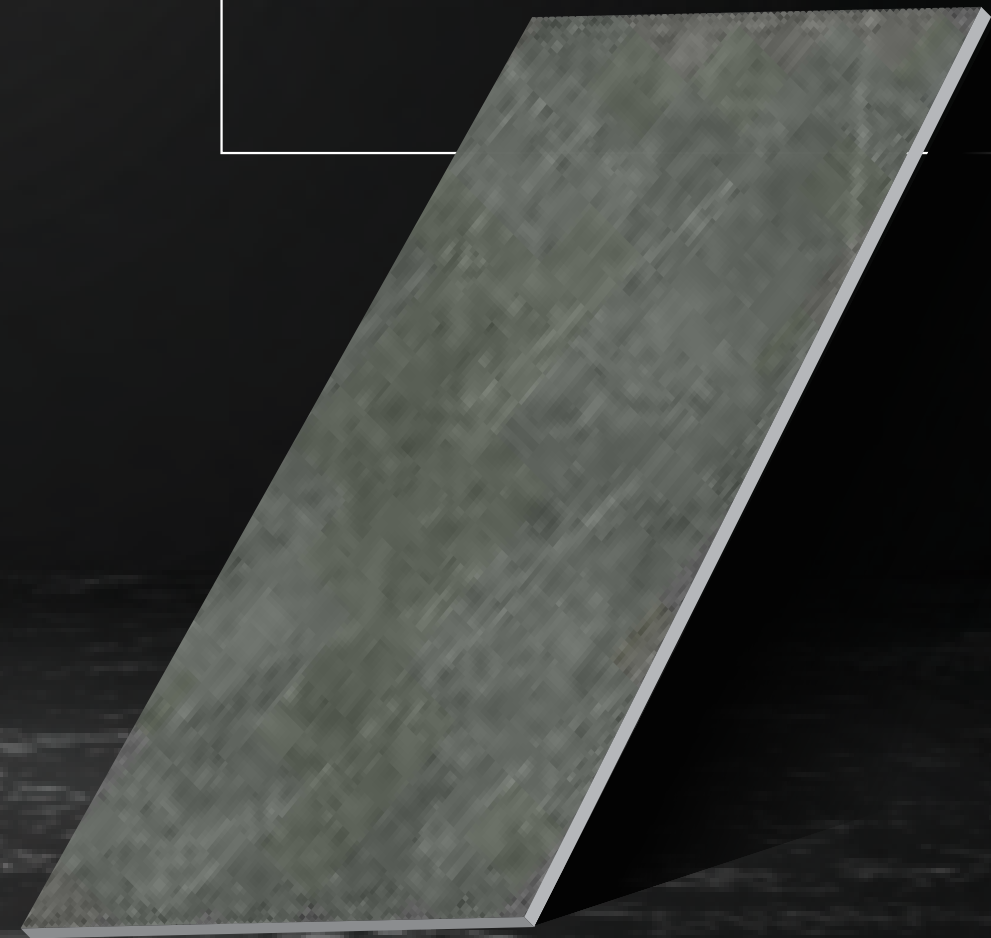
Size/mm	Thickness/mm	pieces/box	m2/box	kgs/box	boxes/pallet
1200x600	10.5	2	1.44	35	38

**10.**

**SIZE 600x1200 mm**

**GLAZED PORCELAIN**

*COLOR BODY*











**Many faces**

# LIGHTING SERIES

GLAZED PORCELAIN TILES - COLOR BODY



G12808 1200x600 mm



G12809 1200x600 mm

PACKING DETAILS

Size/mm	Thickness/mm	pieces/box	m2/box	kgs/box	boxes/pallet
1200x600	10.5	2	1.44	35	38





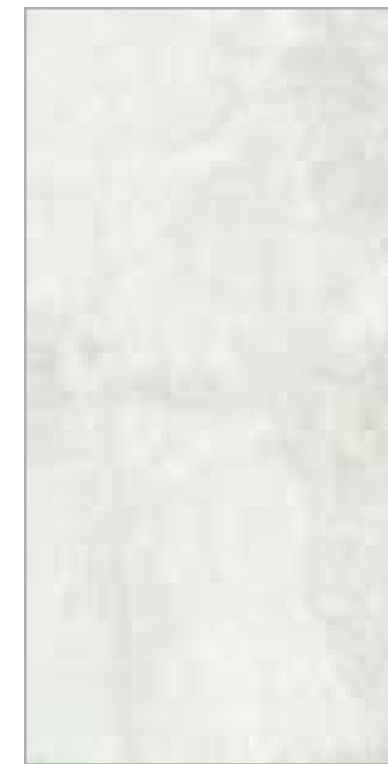




**Many faces**

# MIX STONE SERIES

GLAZED PORCELAIN TILES - COLOR BODY



**G12MXBL** 1200x600 mm



**G12MXGR** 1200x600 mm



**G12MXGA** 1200x600 mm

PACKING DETAILS

Size/mm	Thickness/mm	pieces/box	m2/box	kgs/box	boxes/pallet
1200x600	10.5	2	1.44	35	38





Many faces

# KIMBERLITE SERIES

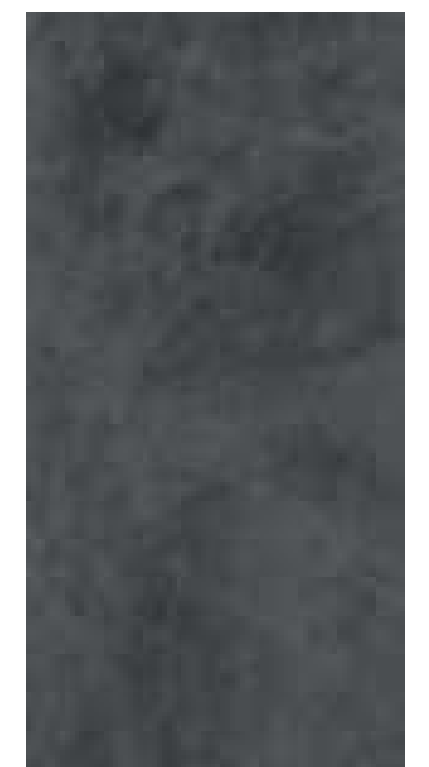
GLAZED PORCELAIN TILES - COLOR BODY



G12848 1200x600mm



G12845 1200x600mm



G12849 1200x600mm

PACKING DETAILS

Size/mm	Thickness/mm	pieces/box	m2/box	kgs/box	boxes/pallet
1200x600	10.5	2	1.44	35	38

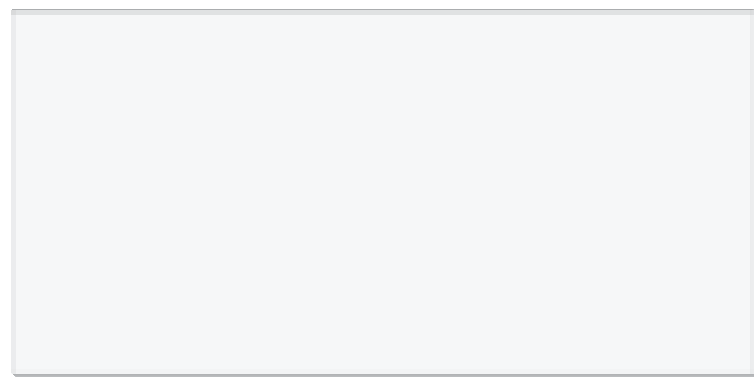


# 11.

## CERAMIC TILES

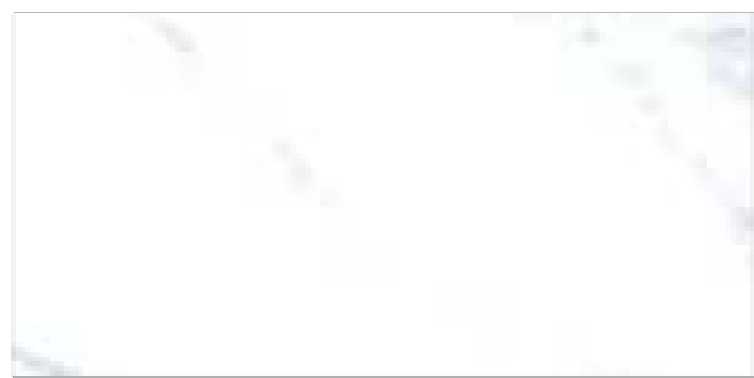


# CERAMIC TILES



W63035

600x300mm



W63032

600x300mm



W63033

600x300mm

Color for reference only



PACKING DETAILS

Size/mm	Thickness/mm	pieces/box	m2/box	kgs/box	boxes/pallet
600x300	9.4	8	1.44	24	40

**12.**

**TECHNICAL  
STANDARDS**

**TECHNICAL SPECIFICATIONS OF CERAMIC TILE (BIII, Ev >10%)**  
**TIÊU CHUẨN KỸ THUẬT GẠCH MEN (Nhóm BIII Ev >10%)**

ITEM(Follow PP ISO10545) Hạng mục	ISO13006:2018		TCVN 13113:2020 (QCVN16:2023/BXD)		TAICERA
DIMENSION Kích thước	±0.6%	±2.0mm	±0.5%	±2.0mm	±0.5%
RECTANGULARITY Độ vuông góc	±0.5%	±2.0mm	±0.5%	±2.0mm	±0.3%↓
THICKNESS Độ dày	±10%	±0.5mm	±10%	±0.5mm	±10%↓
STRAIGHTNESS OF SIDES Thẳng cạnh	± 0.3%	±1.5mm	± 0.3%	±1.5mm	±0.3%↓
CENTER CURVATURE Cong trung tâm	±0.5%	+2.0mm -1.5mm	±0.5%	+2.0mm -1.5mm	+ 0.5%↓ - 0.3%↓
EDGE CURVATURE Cong mép	±0.5%	+2.0mm -1.5mm	±0.5%	+2.0mm -1.5mm	+ 0.5%↓ - 0.3%↓
WARPAGE Vênh góc	±0.5%	±2.0mm	±0.5%	±2.0mm	±0.5%↓
WATER ABSORPTION Hút nước	Ev >10%		Ev >10%		10%<Ev<18%
BREAKING STRENGTH Độ cứng	≥ 600N		NO REQUIRED Không yêu cầu		≥ 600N
MODULUS OF RUPTURE Bền uốn	≥ 12N/mm <sup>2</sup>		≥ 12N/mm <sup>2</sup>		≥ 12N/mm <sup>2</sup>
ABRASION RESISTANCE Chống mòn	I, II, III, IV		I, II, III, IV		II
Household Chemicals and Salts Resistance Chống hóa chất dân dụng và nước muối	Min class GB		Min class GB		Min class GB
Acids and Alkalis Resistance Chống axit và kiềm	NO REQUIRED Không yêu cầu		NO REQUIRED Không yêu cầu		Min class GHB
CRAZING RESISTANCE Độ bền rạn men	NO CRAZING Không rạn		NO CRAZING Không rạn		NO CRAZING Không rạn
MOISTURE EXPANSION mm/m(%) Độ giãn nở ẩm, mm/m(%)	≤ 0.6		≤ 0.6		≤ 0.6
LINEAR THERMAL EXPANSION, 10 <sup>-6</sup> Hệ số giãn dài nhiệt, 10 <sup>-6</sup>	NO REQUIRED Không yêu cầu		≤ 9		≤ 9
RESISTANCE TO STAINING Chống vết bẩn	Min class 3		Min class 3		Min class 3

**TECHNICAL SPECIFICATIONS OF RECTIFIED GLAZED PORCELAIN TILES**  
**(GROUP BIa, Ev ≤ 0.5%)**  
**TIÊU CHUẨN KỸ THUẬT GẠCH THẠCH ANH MÀI CẠNH CỐ MEN (NHÓM BIa Ev ≤ 0.5%)**

ITEM (Follow PP ISO10545) Hạng mục	ISO13006:2018		TCVN 13113:2020 (QCVN16:2023/BXD)		TAICERA
DIMENSION Kích thước	±0.6%	±2.0mm	±0.6%	±2.0mm	±0.6%
RECTANGULARITY Vuông góc (Đường chéo)	±0.5%	±2.0mm	±0.5%	±2.0mm	±0.4%↓
THICKNESS Độ dày	±5%	±0.5mm	±5%	±0.5mm	±5%↓
STRAIGHTNESS OF SIDES thẳng cạnh	±0.5%	±1.5mm	±0.5%	±1.5mm	±0.3%↓
CENTER CURVATURE Cong trung tâm	±0.5%	±2.0mm	±0.5%	±2.0mm	±0.3%↓
EDGE CURVATURE Cong mép	±0.5%	±2.0mm	±0.5%	±2.0mm	±0.3%↓
WARPAGE Vênh góc	±0.5%	±2.0mm	±0.5%	±2.0mm	±0.3%↓
WATER ABSORPTION Hút nước	Ev ≤ 0.5%		Ev ≤ 0.5%		Ev ≤ 0.3%
BREAKING STRENGTH Độ cứng	≥1300N		≥1300N		≥1300N
MODULUS OF RUPTURE Bền uốn	≥ 35N/mm <sup>2</sup>		≥ 35N/mm <sup>2</sup>		≥ 35N/mm <sup>2</sup>
ABRASION RESISTANCE Mài mòn	Báo cáo theo số vòng đạt được Report to the number of cycles passed		Báo cáo theo số vòng đạt được Report to the number of cycles passed		III
GLOSSY Độ bóng	MATT Mờ	NO REQUIRED Không yêu cầu		NO REQUIRED Không yêu cầu	15±5
	Glossy Bóng				25±5
Household Chemicals and Salts Resistance Chống hóa chất dân dụng và nước muối	Min class B		Min class B		Min class GB
Acids and Alkalis Resistance Chống axit và kiềm	NO REQUIRED Không yêu cầu		NO REQUIRED Không yêu cầu		Min class GHB
CRAZING RESISTANCE Độ bền rạn men	NO CRAZING Không rạn		NO CRAZING Không rạn		NO CRAZING Không rạn
MOISTURE EXPANSION mm/m(%) Độ giãn nở ẩm, mm/m(%)	Theo phương pháp thử DEPEND ON TEST METHOD		Theo phương pháp thử DEPEND ON TEST METHOD		≤ 0.6
LINEAR THERMAL EXPANSION 10 <sup>-6</sup> Hệ số giãn dài nhiệt, 10 <sup>-6</sup>	Theo phương pháp thử DEPEND ON TEST METHOD		Theo phương pháp thử DEPEND ON TEST METHOD		≤ 9
RESISTANCE TO STAINING Chống bẩn	Min class 3		Min class 3		Min class 3

**TECHNICAL SPECIFICATIONS OF GLAZED PORCELAIN TILES (GROUP BIa, Ev ≤ 0.5%)**  
**TIÊU CHUẨN KỸ THUẬT GẠCH THẠCH ANH CÓ MEN (NHÓM BIa Ev ≤ 0.5%)**

ITEM (Follow PP ISO10545) Hạng mục	ISO13006:2018		TCVN 13113:2020 (QCVN16:2023/BXD)		TAICERA
DIMENSION Kích thước	±0.6%	±2.0mm	±0.6%	±2.0mm	±0.6%
RECTANGULARITY Vuông góc(Đường chéo)	±0.5%	±2.0mm	±0.5%	±2.0mm	±0.4%↓
THICKNESS Độ dày	±5%	±0.5mm	±5%	±0.5mm	±5%↓
STRAIGHTNESS OF SIDES Thẳng cạnh	±0.5%	±1.5mm	±0.5%	±1.5mm	±0.3%↓
CENTER CURVATURE Cong trung tâm	±0.5%	±2.0mm	±0.5%	±2.0mm	±0.3%↓
EDGE CURVATURE Cong mép	±0.5%	±2.0mm	±0.5%	±2.0mm	±0.3%↓
WARPAGE Vênh góc	±0.5%	±2.0mm	±0.5%	±2.0mm	±0.3%↓
WATER ABSORPTION Hút nước	Ev ≤ 0.5%		Ev ≤ 0.5%		Ev ≤ 0.3%
BREAKING STRENGTH Độ cứng	≥1300N		≥1300N		≥1300N
MODULUS OF RUPTURE Bền uốn	≥ 35N/mm <sup>2</sup>		≥ 35N/mm <sup>2</sup>		≥ 35N/mm <sup>2</sup>
ABRASION RESISTANCE Mài mòn	Báo cáo theo số vòng đạt được Report to the number of cycles passed		Báo cáo theo số vòng đạt được Report to the number of cycles passed		III
GLOSSY Độ bóng	MATT Mờ	NO REQUIRED Không yêu cầu	NO REQUIRED Không yêu cầu	15±5	
	GLOSSY Bóng			25±5	
Household Chemicals and Salts Resistance Chống hóa chất dân dụng và nước muối	Min class B		Min class B		Min class GB
Acids and Alkalis Resistance Chống axit và kiềm	NO REQUIRED Không yêu cầu		NO REQUIRED Không yêu cầu		Min class GHB
CRAZING RESISTANCE Độ bền rạn men	NO CRAZING Không rạn		NO CRAZING Không rạn		NO CRAZING Không rạn
MOISTURE EXPANSION, mm/m(%) Độ giãn nở ẩm, mm/m(%)	Theo phương pháp thử DEPEND ON TEST METHOD		Theo phương pháp thử DEPEND ON TEST METHOD		≤ 0.6
LINEAR THERMAL EXPANSION 10 <sup>-6</sup> Hệ số giãn dài nhiệt, 10 <sup>-6</sup>	Theo phương pháp thử DEPEND ON TEST METHOD		Theo phương pháp thử DEPEND ON TEST METHOD		≤ 9
RESISTANCE TO STAINING Chống bẩn	Min class 3		Min class 3		Min class 3

**TECHNICAL SPECIFICATIONS OF UNGLAZED POLISH PORCELAIN TILES**  
**(GROUP BIa, Ev ≤ 0.5%)**  
**TIÊU CHUẨN KỸ THUẬT GẠCH THẠCH ANH MÀI BÓNG KHÔNG MEN (NHÓM BIa Ev ≤ 0.5%)**

ITEM (Follow PP ISO10545) Hạng mục	ISO13006:2018		TCVN 13113:2020 (QCVN16:2023/BXD)		TAICERA
DIMENSION Kích thước	±0.6%	±2.0mm	±0.6%	±2.0mm	±0.2%↓
RECTANGULARITY Đường chéo	±0.5%	±2.0mm	±0.5%	±2.0mm	±0.3%↓
THICKNESS Độ dày	±5%	±0.5mm	±5%	±0.5mm	±5%↓
STRAIGHTNESS OF SIDES Thẳng cạnh	±0.5%	±1.5mm	±0.5%	±1.5mm	±0.3%↓
CENTER CURVATURE Phẳng mặt (Cong trung tâm)	±0.5%	±2.0mm	±0.5%	±2.0mm	±0.3%↓
EDGE CURVATURE Cong mép	0.5%	±2.0mm	±0.5%	±2.0mm	±0.3%↓
GLOSSY Độ bóng	POLISH Bóng	NO REQUIRED Không yêu cầu	NO REQUIRED Không yêu cầu	>55	
	MATT Mờ			15 ± 5	
	NANO POLISH Bóng Nano			>85	
WATER ABSORPTION Hút nước	Ev ≤ 0.5%		Ev ≤ 0.5%		Ev ≤ 0.2%
BREAKING STRENGTH Độ cứng	≥1300N		≥1300N		≥1300N
MODULUS OF RUPTURE Bền uốn	≥ 35N/mm <sup>2</sup>		≥ 35N/mm <sup>2</sup>		≥ 35N/mm <sup>2</sup>
ABRASION RESISTANCE Mài mòn	Max175mm <sup>3</sup>		Max175mm <sup>3</sup>		Max125mm <sup>3</sup>
Household Chemicals and Salts Resistance Chống hóa chất dân dụng và nước muối	Min class UB		Min class UB		Min UB
Acids and Alkalis Resistance Chống axit và kiềm	NO REQUIRED Không yêu cầu		NO REQUIRED Không yêu cầu		Min UHB
MOISTURE EXPANSION, mm/m(%) Độ giãn nở ẩm, mm/m(%)	Theo phương pháp thử DEPEND ON TEST METHOD		Theo phương pháp thử DEPEND ON TEST METHOD		≤ 0.6
LINEAR THERMAL EXPANSION 10 <sup>-6</sup> Hệ số giãn dài nhiệt, 10 <sup>-6</sup>	Theo phương pháp thử DEPEND ON TEST METHOD		Theo phương pháp thử DEPEND ON TEST METHOD		≤ 9
RESISTANCE TO STAINING Chống bẩn	Theo phương pháp thử DEPEND ON TEST METHOD		Theo phương pháp thử DEPEND ON TEST METHOD		Min class 3

**TECHNICAL SPECIFICATIONS OF FULL GLAZED POLISH TILES (GROUP BIa, Ev ≤ 0.5%)**  
**TIÊU CHUẨN KỸ THUẬT GẠCH THẠCH ANH MÀI BÓNG MEN TOÀN PHẦN**  
**(NHÓM BIa Ev ≤ 0.5%)**

ITEM (Follow PP ISO10545) Hạng mục	ISO13006:2018		TCVN 13113:2020 (QCVN16:2023/BXD)		TAICERA
DIMENSION Kích thước	±0.6%	±2.0mm	±0.6%	±2.0mm	±0.3%
Mohs	±0.5%	±2.0mm	±0.5%	±2.0mm	≥ 5
RECTANGULARITY Đường chéo	±5%	±0.5mm	±5%	±0.5mm	±0.3%↓
THICKNESS Độ dày	±0.5%	±1.5mm	±0.5%	±1.5mm	±5%↓
STRAIGHTNESS OF SIDES Thẳng cạnh	±0.5%	±2.0mm	±0.5%	±2.0mm	±0.3%↓
CENTER CURVATURE Phẳng mặt (Cong trung tâm)	±0.5%	±2.0mm	±0.5%	±2.0mm	±0.3%↓
EDGE CURVATURE Cong mép	±0.5%	±2.0mm	±0.5%	±2.0mm	±0.3%↓
WARPAGE Vênh góc	±0.6%	±2.0mm	±0.6%	±2.0mm	±0.3%↓
GLOSSY Độ bóng	Không yêu cầu NO REQUIRED		Không yêu cầu NO REQUIRED		≥ 90
WATER ABSORPTION Hút nước	Ev ≤ 0.5%		Ev ≤ 0.5%		Ev ≤ 0.3%
BREAKING STRENGTH Độ cứng	≥1300N		≥1300N		≥1300N
MODULUS OF RUPTURE Bền uốn	≥ 35N/mm <sup>2</sup>		≥ 35N/mm <sup>2</sup>		≥ 35N/mm <sup>2</sup>
ABRASION RESISTANCE Mài mòn	I, II, III, IV		I, II, III, IV		III
Household Chemicals and Salts Resistance Chống hóa chất dân dụng và nước muối	Min class GB		Min class GB		Min GB
Acids and Alkalis Resistance Chống axit và kiềm	NO REQUIRED Không yêu cầu		NO REQUIRED Không yêu cầu		Min GHB
MOISTURE EXPANSION mm/m(%) Độ giãn nở ẩm, mm/m(%)	Theo phương pháp thử DEPEND ON TEST METHOD		Theo phương pháp thử DEPEND ON TEST METHOD		≤ 0.6
LINEAR THERMAL EXPANSION 10 <sup>-6</sup> Hệ số giãn dài nhiệt, 10 <sup>-6</sup>	Theo phương pháp thử DEPEND ON TEST METHOD		Theo phương pháp thử DEPEND ON TEST METHOD		≤ 9
RESISTANCE TO STAINING Chống bẩn	Theo phương pháp thử DEPEND ON TEST METHOD		Theo phương pháp thử DEPEND ON TEST METHOD		Min Class 3
CRAZING RESISTANCE Độ bền rạn men	NO CRAZING Không rạn		NO CRAZING Không rạn		NO CRAZING Không rạn

**TECHNICAL SPECIFICATIONS OF RECTIFIED UNGLAZED FULL BODY RUSTIC TILES**  
**(GROUP BIa, Ev ≤ 0.5%)**  
**TIÊU CHUẨN KỸ THUẬT GẠCH THẠCH ANH GIẢ CỖ ĐỒNG CHẤT KHÔNG MEN, MÀI CẠNH**  
**(NHÓM BIa Ev ≤ 0.5%)**

ITEM (Follow PP ISO10545) Hạng mục	ISO13006:2018		TCVN 13113:2020 (QCVN16:2023/BXD)		TAICERA
DIMENSION Kích thước	±0.6%	±2.0mm	±0.6%	±2.0mm	±0.6%↓
RECTANGULARITY Đường chéo	±0.5%	±2.0mm	±0.5%	±2.0mm	±0.4%↓
THICKNESS Độ dày	±5%	±0.5mm	±5%	±0.5mm	±5%↓
STRAIGHTNESS OF SIDES Thẳng cạnh	±0.5%	±1.5mm	±0.5%	±1.5mm	±0.3%↓
CENTER CURVATURE Phẳng mặt (Cong trung tâm)	±0.5%	±2.0mm	±0.5%	±2.0mm	±0.3%↓
EDGE CURVATURE Cong mép	±0.5%	±2.0mm	±0.5%	±2.0mm	±0.3%↓
WARPAGE Vênh góc	±0.5%	±2.0mm	±0.5%	±2.0mm	±0.3%↓
WATER ABSORPTION Hút nước	Ev ≤ 0.5%		Ev ≤ 0.5%		Ev ≤ 0.3%
BREAKING STRENGTH Độ cứng	≥1300N		≥1300N		≥1300N
MODULUS OF RUPTURE Bền uốn	≥ 35N/mm <sup>2</sup>		≥ 35N/mm <sup>2</sup>		≥ 35N/mm <sup>2</sup>
ABRASION RESISTANCE Mài mòn	Max175mm <sup>3</sup>		Max175mm <sup>3</sup>		Max125mm <sup>3</sup>
GLOSSY Độ bóng	NO REQUIRED Không yêu cầu		NO REQUIRED Không yêu cầu		3~5
Household Chemicals and Salts Resistance Chống hóa chất dân dụng và nước muối	Min class UB		Min class UB		Min UB
Acids and Alkalis Resistance Chống axit và kiềm	NO REQUIRED Không yêu cầu		NO REQUIRED Không yêu cầu		Min UHB
MOISTURE EXPANSION mm/m(%) Độ giãn nở ẩm, mm/m(%)	Theo phương pháp thử DEPEND ON TEST METHOD		Theo phương pháp thử DEPEND ON TEST METHOD		≤ 0.6
LINEAR THERMAL EXPANSION 10 <sup>-6</sup> Hệ số giãn dài nhiệt, 10 <sup>-6</sup>	Theo phương pháp thử DEPEND ON TEST METHOD		Theo phương pháp thử DEPEND ON TEST METHOD		≤ 9
RESISTANCE TO STAINING Chống bẩn	Theo phương pháp thử DEPEND ON TEST METHOD		Theo phương pháp thử DEPEND ON TEST METHOD		Min class 3



**TECHNICAL SPECIFICATIONS OF NON-RECTIFIED UNGLAZED FULL BODY RUSTIC TILES  
(GROUP B1a, Ev ≤ 0.5%)  
TIÊU CHUẨN KỸ THUẬT GẠCH THẠCH ANH GIẢ CỔ ĐỒNG CHẤT  
( KHÔNG MEN, KHÔNG MÀI CẠNH ) (NHÓM B1a Ev ≤ 0.5%)**

ITEM (Follow PP ISO10545) Hạng mục	ISO13006:2018		TCVN 13113:2020 (QCVN16:2023/BXD)		TAICERA
DIMENSION Kích thước	±0.6%	±2.0mm	±0.6%	±2.0mm	±0.6%
RECTANGULARITY Vuông góc (Đường chéo)	±0.5%	±2.0mm	±0.5%	±2.0mm	±0.4%↓
THICKNESS Độ dày	±5%	±0.5mm	±5%	±0.5mm	±5%↓
STRAIGHTNESS OF SIDES Thẳng cạnh	±0.5%	±1.5mm	±0.5%	±1.5mm	±0.3%↓
CENTER CURVATURE Cong trung tâm	±0.5%	±2.0mm	±0.5%	±2.0mm	±0.3%↓
EDGE CURVATURE Cong mép	±0.5%	±2.0mm	±0.5%	±2.0mm	±0.3%↓
WARPAGE Vênh góc	±0.5%	±2.0mm	±0.5%	±2.0mm	±0.3%↓
WATER ABSORPTION Hút nước	Ev ≤ 0.5%		Ev ≤ 0.5%		Ev ≤ 0.3%
BREAKING STRENGTH Độ cứng	≥1300N		NO REQUIRED Không yêu cầu		≥1300N
MODULUS OF RUPTURE Bền uốn	≥ 35N/mm <sup>2</sup>		≥ 35N/mm <sup>2</sup>		≥ 35N/mm <sup>2</sup>
ABRASION RESISTANCE Mài mòn sâu	Max175mm <sup>3</sup>		Max175mm <sup>3</sup>		Max125mm <sup>3</sup>
GLOSSY Độ bóng	NO REQUIRED Không yêu cầu		NO REQUIRED Không yêu cầu		3~5
Household Chemicals and Salts Resistance Chống hóa chất dân dụng và nước muối	Min class UB		Min class UB		Min UB
Acids and Alkalis Resistance Chống axit và kiềm	NO REQUIRED Không yêu cầu		NO REQUIRED Không yêu cầu		Min UHB
MOISTURE EXPANSION mm/m(%) Độ giãn nở ẩm, mm/m(%)	Theo phương pháp thử DEPEND ON TEST METHOD		Theo phương pháp thử DEPEND ON TEST METHOD		≤ 0.6
LINEAR THERMAL EXPANSION 10 <sup>-6</sup> Hệ số giãn dài nhiệt, 10 <sup>-6</sup>	Theo phương pháp thử DEPEND ON TEST METHOD		Theo phương pháp thử DEPEND ON TEST METHOD		≤ 9
RESISTANCE TO STAINING Chống bẩn	Theo phương pháp thử DEPEND ON TEST METHOD		Theo phương pháp thử DEPEND ON TEST METHOD		Min class 3

**BẢNG CHI CHI TIẾT ĐÓNG GÓI  
PRODUCT PACKING DETAIL LIST**

PRODUCT	SIZE (mm)	THICKNESS (mm)	BOX			PALLET		
			PCS/BOX	M2/BOX	KG/BOX (±1kg)	Box/pallet	M2/pallet	Kg/pallet (including pallet weight 25 kgs)
Polish Granite Tiles	600*300	8.7 ± 0.2	8	1.44	27	40	57.6	1,105
Polish Granite Tiles	600*600	8.7 ± 0.2	4	1.44	27	40	57.6	1,105
Polish Granite Tiles	600*600	9.0 ± 0.2	4	1.44	28	40	57.6	1,145
Polish Granite Tiles	800*800	10.5 ± 0.3	3	1.92	45	30	57.6	1,375
Glazed Polish Tiles	600*300	8.7 ± 0.2	8	1.44	28	40	57.6	1,145
Glazed Polish Tiles	600*600	8.7 ± 0.2	4	1.44	28	40	57.6	1,145
Glazed Polish Tiles	800*800	10.5 ± 0.3	3	1.92	45	30	57.6	1,375
Glazed Polish Tiles	900*900	10.5 ± 0.3	2	1.62	38	40	64.8	1,545
Glazed Polish Tiles	1200*600	10.5 ± 0.3	2	1.44	35	38	54.72	1,355
Glazed Porcelain Tiles	300*300	7.7 ± 0.3	11	0.99	16	66	65.34	1,081
Glazed Porcelain Tiles	400*400	7.7 ± 0.3	8	1.28	21	64	81.92	1,369
Glazed Porcelain Tiles	600*148	8.7 ± 0.3	15	1.35	28	48	64.8	1,369
Glazed Porcelain Tiles	600*300	8.7 ± 0.3	8	1.44	28	40	57.6	1,145
Glazed Porcelain Tiles	600*600	8.7 ± 0.3	4	1.44	28	40	57.6	1,145
Glazed Porcelain Tiles	800*800	10.5 ± 0.3	3	1.92	45	30	57.6	1,375
Glazed Porcelain Tiles	900*900	10.5 ± 0.3	2	1.62	38	40	64.8	1,545
Glazed Porcelain Tiles	1200*200	10.5 ± 0.3	6	1.44	35	45	64.8	1,600
Glazed Porcelain Tiles	1200*600	10.5 ± 0.3	2	1.44	35	38	54.72	1,355
Double Loading Natural Tiles	600*300	8.7 ± 0.3	8	1.44	28	40	57.6	1,145
Double Loading Natural Tiles	600*600	8.7 ± 0.3	4	1.44	28	40	57.6	1,145
Double Loading Natural Tiles	800*800	10.5 ± 0.3	3	1.92	45	30	57.6	1,375
Double Loading Natural Tiles	900*900	10.5 ± 0.3	2	1.62	38	40	64.8	1,545
Double Loading Natural Tiles	1200*200	10.5 ± 0.3	6	1.44	35	45	64.8	1,600
Double Loading Natural Tiles	1200*600	10.5 ± 0.3	2	1.44	35	38	54.72	1,355
Full Body Tiles	300*300	7.7 ± 0.3	11	0.99	16	66	65.34	1,081
Full Body Tiles	600*300	8.7 ± 0.3	8	1.44	28	40	57.6	1,145
Full Body Tiles	600*600	8.7 ± 0.3	4	1.44	28	40	57.6	1,145
Full Body Tiles 20mm	600*300	20.0 ± 0.3	4	0.72	32	40	28.8	1,305
Full Body Tiles 20mm	600*600	20.0 ± 0.3	2	0.72	32	40	28.8	1,305
Full Body Tiles 20mm	1200*600	20.0 ± 0.3	1	0.72	32	38	27.36	1,241
Ceramic Wall Tiles	600*300	9.4 ± 0.4	8	1.44	24	40	57.6	985



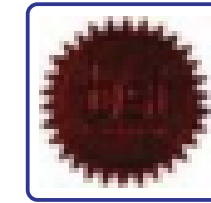
# CERTIFICATE



CE COMPLIANCE CERTIFICATE



VIETNAM QUATEST 3



ENVIRONMENTAL MANAGER SYSTEM - ISO 14001:2015  
QUALITY MANAGER SYSTEM - ISO 9001:2015



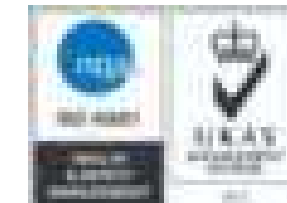
INDONESIA CERTIFICATE



PHILIPPINE STANDARD CERTIFICATE



MALAYSIA SIRIM



# SYMBOL



## V1 - LOW

Trong cùng 1 lô có khác màu và hoa văn biến hóa mức độ nhẹ .

*This number provides a minimal shade and texture variation among pieces from the same production run*



## V2 - MODERATE

Khác màu và hoa văn biến hóa mức độ trung. Mỗi viên mỗi khác, nhưng màu sắc và hoa văn tương tự nhau. Mỗi viên gạch khả năng có thể có màu và hoa văn khác nhau.

*This number provides moderate shade and texture variations. Each piece will vary, yet be similar to each other in color and texture variations. Each piece of tile may have different colors, textures, and shades.*



## V3 - HIGH

Khác màu và hoa văn biến hóa mức độ nặng. Mỗi màu mức độ mỗi khác, giữa viên này với viên kia sẽ có sự khác nhau. Tất cả màu sắc ở một mức độ nhất định cùng thể hiện trong một viên gạch.

*This number provides high shade and texture variations. The intensity of each color will vary from tile to tile and may appear different from another piece. All the colors will be present in a single piece of tile to some degree.*



## V4 - RANDOM

Mỗi viên gạch có màu sắc và hoa văn biến hóa ngẫu nhiên, do vậy có thể màu sắc sẽ hoàn toàn khác với những viên gạch khác. Như thế sau khi lát xong kiểu dáng sẽ rất độc đáo.

*This number provides random shade and texture variations from tile to tile, so that one tile may have totally different colors from that on other tiles. Thus, the final installation will be unique.*



Floor Tile



Wall Tile



Indoor



Outdoor



Digital Technology



**TAICERA ENTERPRISE COMPANY**

Go Dau Industrial Zone, Phuoc Thai Commune, Long Thanh District,  
Dong Nai Province, Vietnam.  
Tel: (0251) 3841596 (4 lines)  
Email: [www@taicera.com](mailto:www@taicera.com) - [export@taicera.com](mailto:export@taicera.com)

**Ha Noi Branch**

266 Truong Chinh Street, Khuong Thuong Ward, Dong Da District, Ha Noi City  
Tel: (024) 6278 0510 - (024) 6686 4953  
Email: [hanoi@taicera.com](mailto:hanoi@taicera.com)

**Hai Phong Branch**

Vinh Niem industrial Cluster, Vinh Niem ward, Le Chan district, Hai Phong City  
Tel: (0225) 3950361 - 3950363  
Email: [haiphong@taicera.com](mailto:haiphong@taicera.com)

**Da Nang Branch**

191 Dien Bien Phu Street, Chinh Gian Ward, Thanh Khe District, Da Nang City  
Tel: (0236) 3561442 - 3582232 - 3582262  
Email: [danang@taicera.com](mailto:danang@taicera.com)

**Nha Trang Branch**

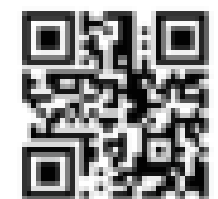
86 Le Hong Phong Street, Phuoc Hai Ward, Nha Trang City  
Tel: (0258) 3876948 - 3876945 - 3876946  
Email: [nhatrang@taicera.com](mailto:nhatrang@taicera.com)

**Ho Chi Minh Branch**

247 Ly Thuong Kiet Street, Ward 15, District 11, Ho Chi Minh City  
Tel: (028) 38661293 (5 lines)  
Email: [hochiminh@taicera.com](mailto:hochiminh@taicera.com)

**Can Tho Branch**

51/1A Street 3/2, Xuan Khanh Ward, Ninh Kieu District, Can Tho City  
Tel: (0292) 3831091 - 3831092  
Email: [cantho@taicera.com](mailto:cantho@taicera.com)



[www.taicera.com](http://www.taicera.com)