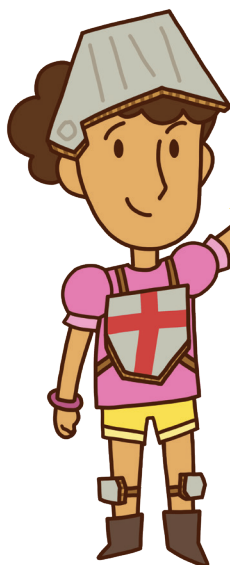


# SUMMER BRAIN QUEST®

Workman Publishing

FOR ADVENTURERS AGES 7-8  
BETWEEN GRADES **1&2**



**GET  
READY  
FOR 2nd  
GRADE!**

Written by Megan Hewes Butler and Claire Piddock  
Consulting Editor: Mindy Yip



# Contents

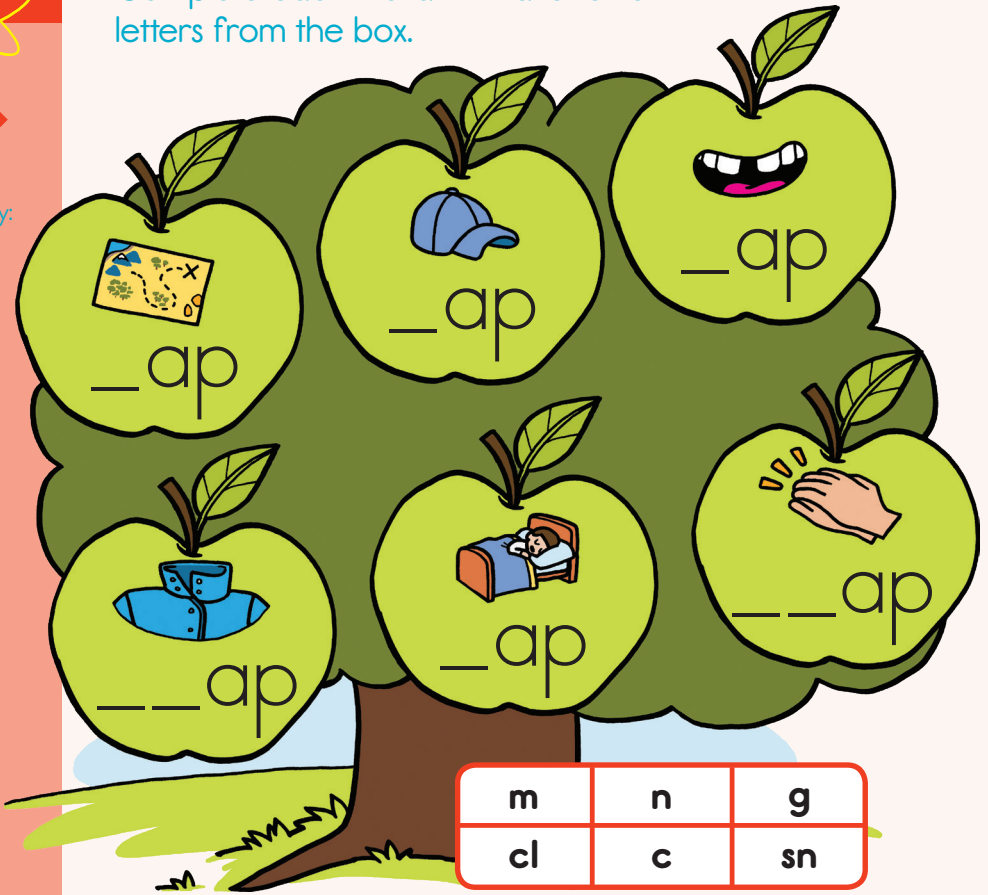
Instructions.....	5
Level 1.....	9
Level 2.....	19
Level 3.....	31
Level 4.....	47
Level 5.....	57
Level 6.....	71
Level 7.....	87
Level 8.....	105
Summer Brainiac Award! .....	128
Outside Quests.....	129
Answer Key.....	134
Summer Brain Quest Reading List.....	145
Summer Brain Quest Mini Deck.....	154

# Apple-y Words

Complete each word with a letter or letters from the box.



Word Family:  
-ap



**BONUS:** Complete this sentence:

The tired bird wants  
to \_\_\_ap.

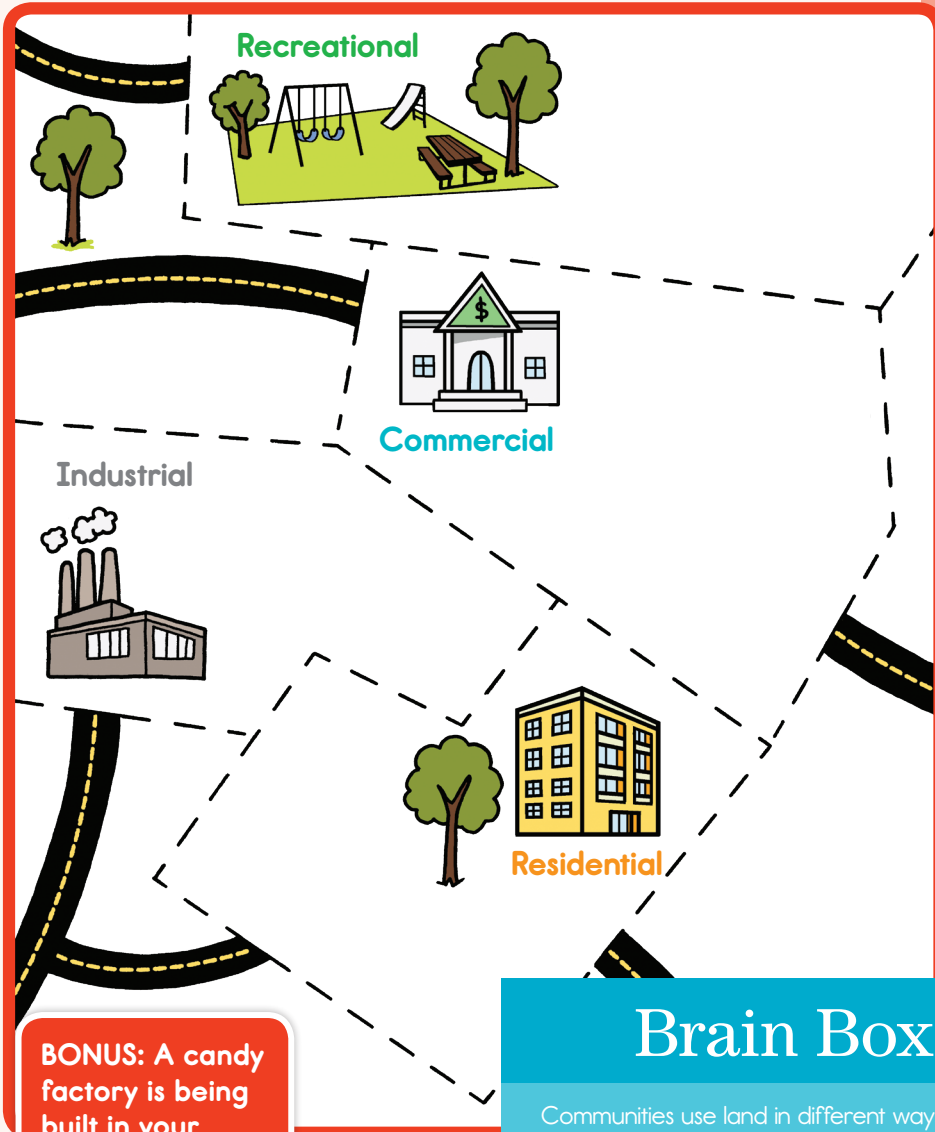
The Golden Bird flaps his wings. Write  
or draw what he might fly toward.





# In the Zone

On the map, draw buildings and places you might find in each zone. (HINT: Think about your own community. What kind of places are in each zone?)



**BONUS:** A candy factory is being built in your neighborhood—yum! Add it to your map in the correct zone.

## Brain Box

Communities use land in different ways to meet people's needs.

An **industrial zone** is where goods are made.

A **commercial zone** is where people can buy goods and services.

A **recreational zone** is where people can play.

A **residential zone** is where people live.

# The Basic Needs of Plants

In each picture, a plant is not getting what it needs to grow. Draw what happens if the plant gets what it needs.



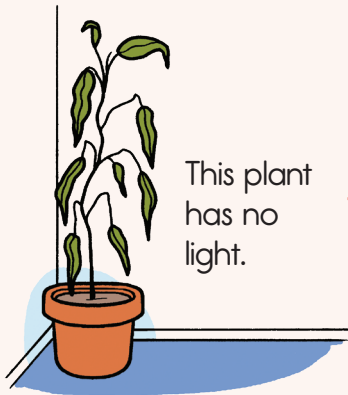
Plant Survival



This fern has no water because of a drought.



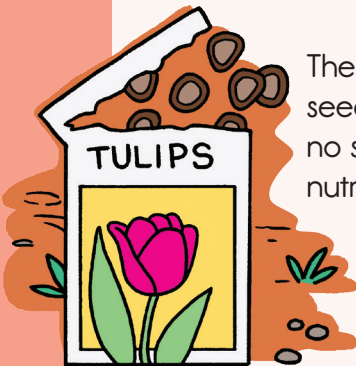
Draw what will happen when it rains.



This plant has no light.



Draw what will happen when it's moved to a window.



These seeds have no soil for nutrients.



Draw what will happen when they are planted.

## Brain Box

Plants get the energy they need from sunlight, and use air, water, and nutrients from the soil to make their food and grow.

# Kitten Kin



Addition and  
Subtraction

Use the three numbers to complete the related math facts. They are a fact family!



$4 + 7 = \square$

$7 + 4 = \square$

$11 - 4 = \square$

$11 - 7 = \square$



$9 + 5 = \square$

$5 + 9 = \square$

$14 - 9 = \square$

$14 - 5 = \square$



$3 + 5 = \square$

$5 + 3 = \square$

$8 - 5 = \square$

$8 - 3 = \square$



$6 + 7 = \square$

$7 + 6 = \square$

$\square - 6 = 7$

$\square - 7 = 6$

# Welcome to Candy Cloud

Follow the directions to read and complete the Candy Cloud map!



Reading a Map

The map is a grid with columns numbered 1 to 5 and rows lettered A to F. At the top, a large white cloud contains the words "CANDY CLOUD" in colorful letters. A yellow gift box is at (1, F), a blue bird is at (4, F), a red and white striped candy is at (5, F), and a blue bird is at (4, E). A gingerbread house is at (2, D). A playset with a slide and a seesaw is at (4, E). A path of colorful dots starts at (3, C) and goes down to (3, A), then right to (5, A), then up to (5, C), then left to (1, C), then up to (1, E), and finally right to (5, E). A compass rose is located at (2, B) with "North" at the top, "South" at the bottom, "West" on the left, and "East" on the right. There are also two small white clouds on the left side of the grid.



Reading a  
Map

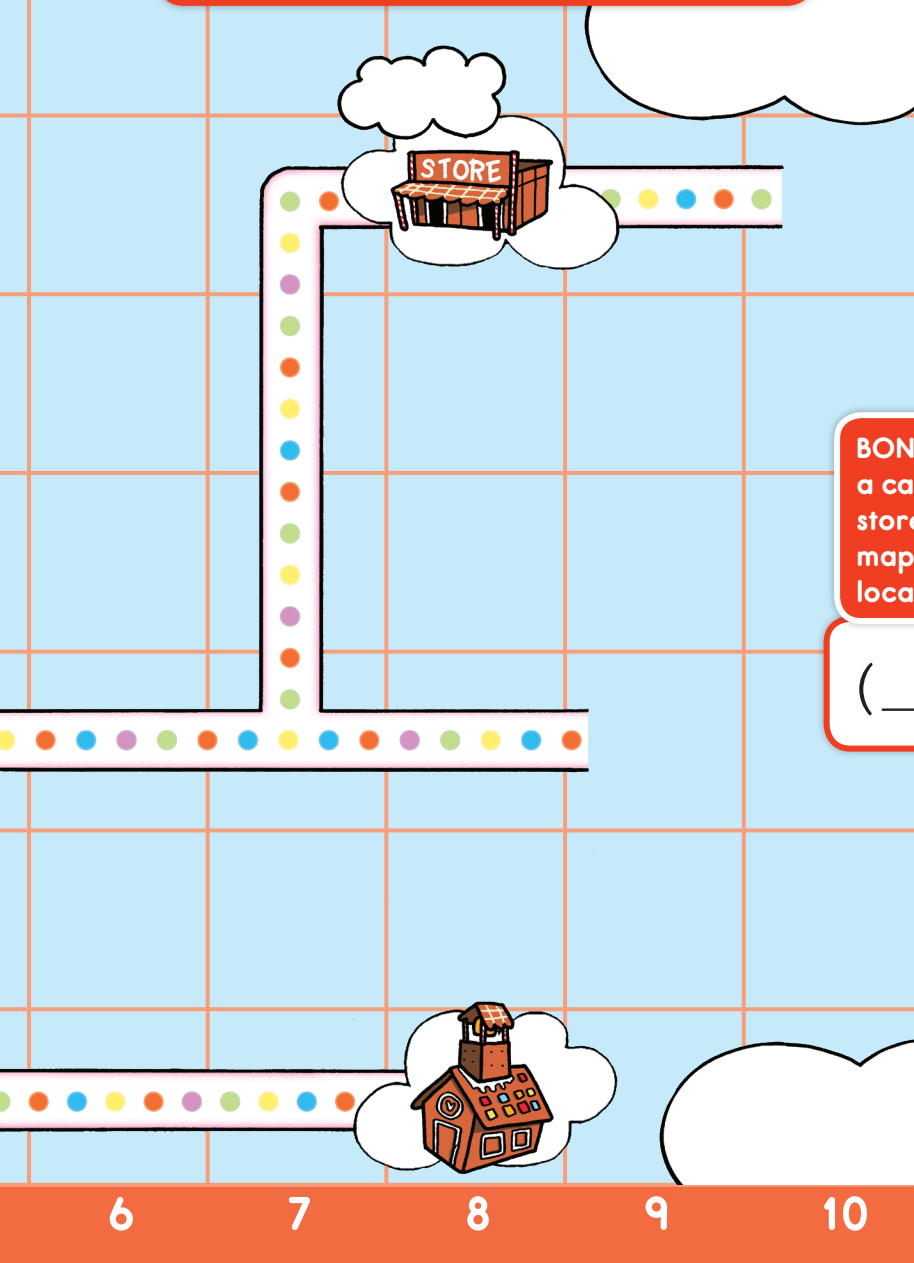
Circle the house that is located at **(2, D)**.

Write an **X** on what is located at **(8, F)**.

Draw a candy factory at **(1, C)**.

Draw an airport at **(9, C)**.

Draw a candy museum at **(7, B)**.



**BONUS:** Add  
a candy cane  
store to the  
map and list its  
location here:

( \_\_, \_\_ ).



## Gingerbread House



Add the decorations to the gingerbread house. Add the groups to make 10. Then add more. Write the sum.



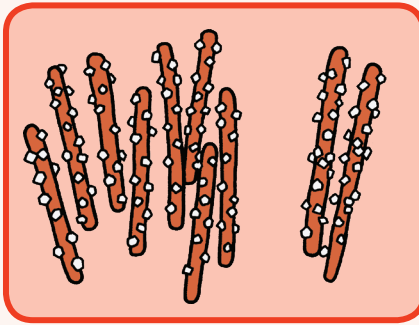
Tens and  
Ones



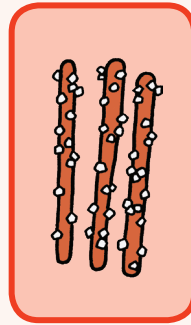

+



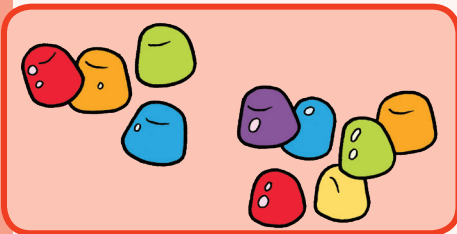

=



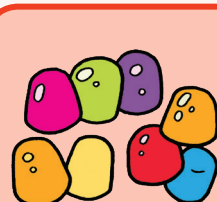

+




=




+

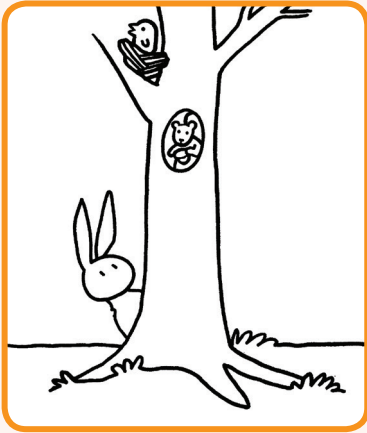



=

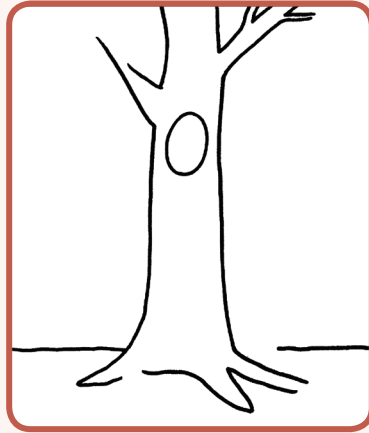
Seasonal  
Patterns

# Changing Weather

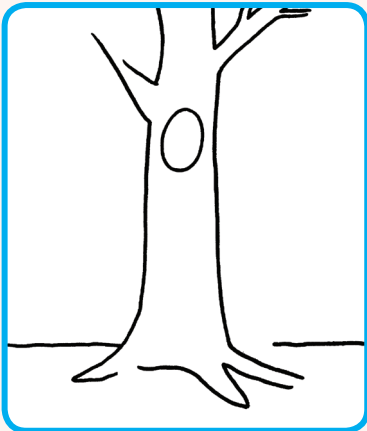
Plants, trees, and other elements in nature change through the four seasons. Draw how each scene changes based on the season.



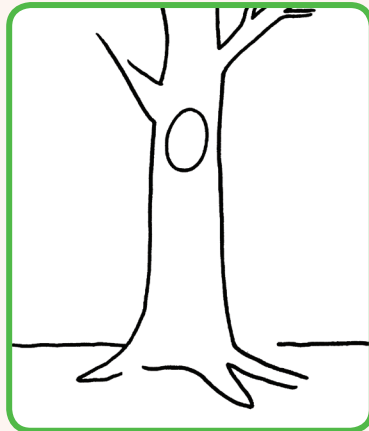
Summer



Fall



Winter



Spring