

REMOTE CONTROLLER
GEN-RC



1 BEFORE INSTALLATION

<p>⚠ Warning</p> <p>Failure to follow the instructions provided and improper handling may cause death or serious injury.</p>	<p>Do not touch the unit base or power terminals of the product with a wet hand. (Also, if the product is wet after rain, do not touch it.) It may cause electric shock. </p>
	<p>Never attempt to disassemble or repair the product. It may cause fire or damage to the devices. </p> <p>[Handling of Batteries] Fire, explosion and severe burn hazard. Do not recharge, short circuit, crush, disassemble, heat above 100°C, Incinerate, or expose contents to water. Do not solder directly to the cell. </p>
<p>⚠ Caution</p> <p>Failure to follow the instructions provided and improper handling may cause injury and/or property damage.</p>	<p>Do not pour water over the product. The water may enter and may cause damage to the devices. </p>
	<p>Clean and check the product periodically for safe use. If any problem is found, do not attempt to use the product as it is and inform your installer. </p>
	<p>If you do not use the product for a long period of time, remove the battery. Keep it in a cool, dark area. </p>
	<p>Dispose batteries according to local regulations. </p>

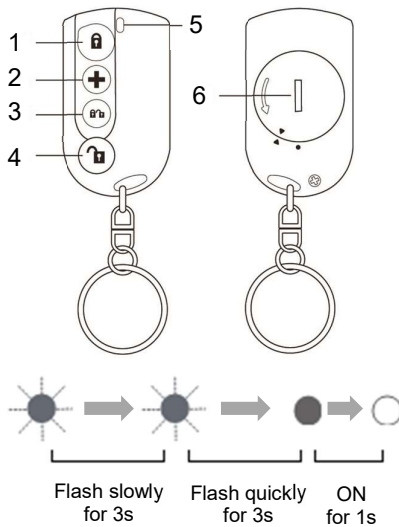
This symbol indicates prohibition. The specific prohibited action is provided in and/or around the figure.

This symbol requires an action or gives an instruction.

The Remote Controller is used to arm the system in home or away mode, disarm the system and send a panic signal.

2 PARTS IDENTIFICATION

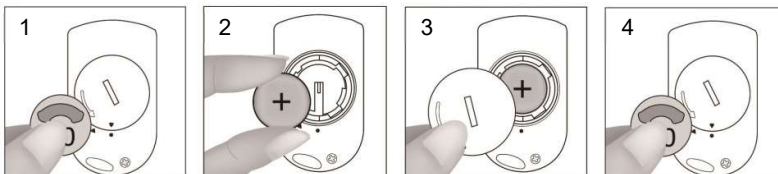
Press and hold each key for 1.5 sec to activate its key functions described in below.



Flash pattern when press Panic button

- 1. FULL ARM BUTTON**
 Press this button will arm the system in full arm mode.
- 2. PANIC BUTTON**
 Press and hold this button for three seconds will send a panic signal, regardless of system status (armed or disarmed). If the holding time is less than 3 seconds, panic signal will not be sent.
- 3. PARTIAL ARM BUTTON**
 Press this button will arm the system in partial arm mode.
- 4. DISARM BUTTON**
 Press this button will disarm the system. If the alarm is sounding, press this button will stop the alarm (except when the alarm was raised by pressing the Key Fob's Panic button).
- 5. LED INDICATOR**
 The LED will flash quickly when the Full Arm, Partial Arm and Disarm buttons are pressed. When the Panic button is pressed, at first the LED will flash slowly for 3 seconds, then flashed quickly for 3 seconds and turn on for 1 second as left.
- 6. BATTERY COVER**

3 BATTERY INSTALLATION



- Step1. Remove the battery cover by using a coin to turn it counter-clockwise.
- Step2. Insert the battery as shown in the diagram, with the marked side (positive) of the battery facing up.
- Step3. Replace the battery cover.
- Step4. Secure the cover by using a coin to turn clockwise.

4 LEARNING DEVICES

- Connect PC to the Control Panel and open Webpage of Device Management and then press "Start Learning".
- Press any buttons on the Key Fob.
- Please refer to the operation manual of your control panel under the section of "Learning" to complete learn-in process.

5 REPLACE BATTERY

- The LFP-KF uses one "CR2032" 3V Lithium battery as its power source.
- The low battery status will be reported to the Control Panel and the Control Panel will display the status accordingly.
- After removing the old battery, press any button twice to fully discharge before inserting new battery.
- When an inserted battery voltage is low, the LED will flash 3 times to indicate low battery status.

6 SPECIFICATIONS

Model	GEN-RC
Frequency	433.82 MHz
Power source	CR2032 Lithium battery
Battery life	Approx. 7 years (4 activations per day, 25°C)
Operating conditions	-10°C to +45°C (up to 85% non-condensing)
Weight	28 g (including battery and keychain)

7 DIMENSIONS

