

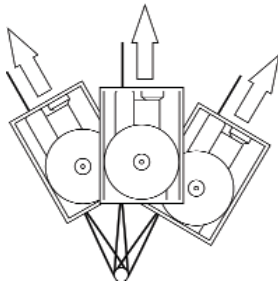
The Gripwinch is a **motorized traction hoist built for lifting and pulling in a wide variety of applications.** The mechanism is engineered in such a way that the wire rope runs through the Gripwinch without being stored, allowing unlimited wire rope length capability. For easier manipulation and storage, the Gripwinch® is available in several models, with or without winder, free standing or mounted on a frame, electric, hydraulic or air operated.

**RUGGED, VERSATILE AND SAFE**

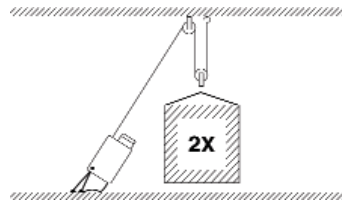
- ◆ Extremely compact
- ◆ Works in any direction
- ◆ Single line capacity 700 to 6,600 lbs.
- ◆ Power Supply - 110, 220V/1ph, 220V/3ph, 480V, air, hydraulic
- ◆ Unlimited length of wire rope
- ◆ Operating speed
  - 17 - 35 - 70 fpm
  - 17/35, 17/70, 35/70 fpm dual speeds available for 3 phase versions
- ◆ Control type - 10 ft. hardwired pendant control, detachable control, direct control, or central control



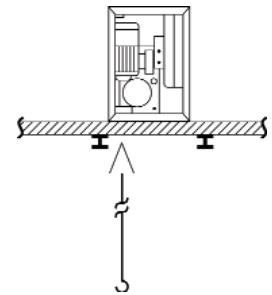
**MULTIPLE USES**



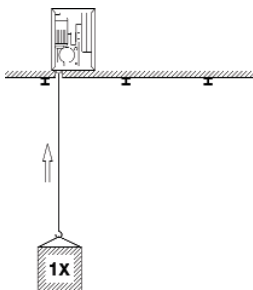
The mobile Gripwinch automatically turns in the direction of the pull. Furthermore, with the mobile Gripwinch, the capacity and speed remain constant at all times.



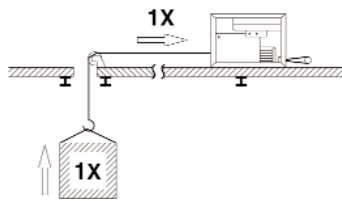
It is possible for lifting and pulling applications, to increase the capacity of the Gripwinch by using multiple sheave blocks.



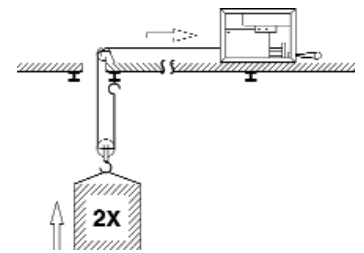
If the hole is not big enough for the rope hook to pass through, position the mobile Gripwinch and pass the wire rope through the hole and then into the Gripwinch.



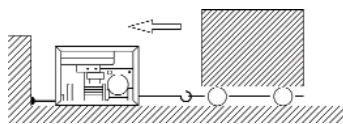
If the pull is through an opening in the wall or ceiling capable of taking the load simply locate the Gripwinch near or above the hole.



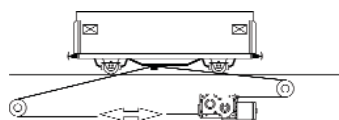
To lift anchor the mobile Gripwinch to a suitable point and pass the wire rope around one or more return pulley.



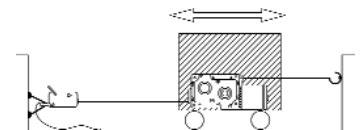
If the effective power is not enough, increase the capacity using a set of multiple sheave blocks.



To anchor the frame, simply attach the mobile Gripwinch to a suitable anchored point using a wire rope sling, chain or similar attachment.



The Gripwinch can move the load to-and-fro.



The Gripwinch can move with the load.

- ◆ Portable and powerful for unlimited heights of lift
- ◆ A complete range of electric hoists for a wide range of applications
- ◆ Rated loads of 220 lbs, 660 lbs, and 1,000 lbs which can be doubled by a sheave kit
- ◆ Unlimited height of lift
- ◆ Unloaded wire rope freely suspended or optional rope reeler
- ◆ Pendant control
- ◆ Direct lift or sheaving kit for increased capacity
- ◆ Single phase or 3 phase power
- ◆ TR 10 & TR 30 come with blue steel box  
TR 30S & TR 50 come in cardboard box

**Quality & Power**

- ◆ High power to weight ratio
- ◆ Body in aluminum alloy
- ◆ Unlimited length of lifting wire rope
- ◆ Wire rope, dia. 0.25 in. (6.5 mm)
- ◆ 110V standard, 220V available

**Safety**

- ◆ Upper and lower adjustable end limit stops
- ◆ Motor integrated brake



TR50



TR30



Minifor® fitted with wire rope reeler (optional)



Minifor® TR10 - TR30 kit



Minifor® TR10-TR30 fitted with sheave block kit (optional)

Model	Dimensions L x W x D in.	Weight with- out wire rope lbs (kg)	WLL lbs. (kg)		Speed fpm (mpm)		Power Supply			Optional WR Reeler	
			Direct	Sheaved	Direct	Sheaved	single phase 115 V	single phase 220 V	three phase 220 V	66 ft. 20 m	100 ft. 35 m
TR10	14 x 9 x 17	46 (20)	220 (100)	441 (200)	50 (15)	25 (7.5)	◆	◆		◆	◆
TR30	14 x 9 x 17	46 (20)	660 (300)	1,320 (600)	17 (5)	8.5 (2.5)	◆	◆		◆	◆
TR30S	19 x 9 x 17	71 (32)	660 (300)	1,320 (600)	43 (13)	21 (6.5)	◆	◆	◆		
TR50	19 x 9 x 17	71 (32)	1,000 (453)	2,000 (906)	23 (7)	11.5 (3.5)	◆	◆	◆		