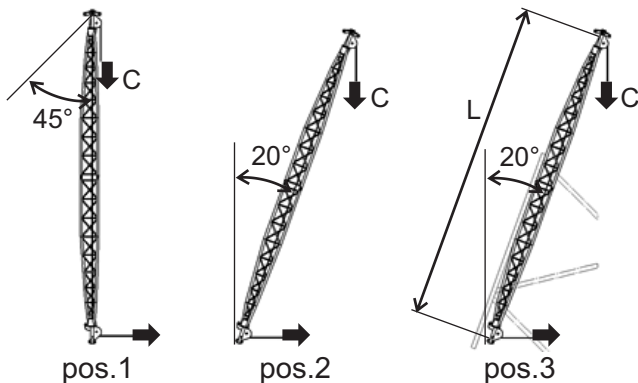


Ginpoles

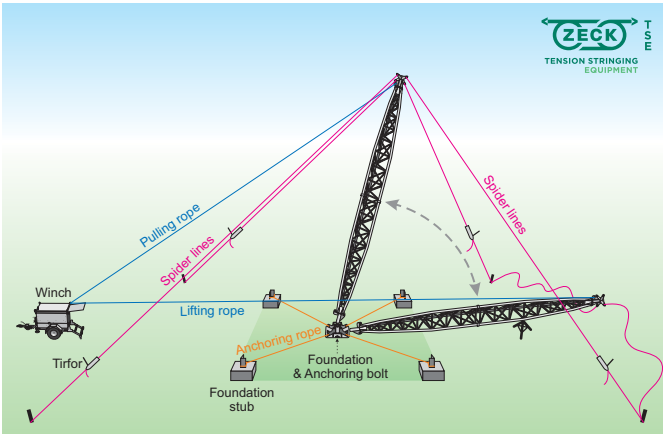
Ginpoles are used for the erection of transmission line or telecom towers. Together with lifting winches they function similar to crane arms. Once the tower has been erected up to a certain height, the Ginpole is lifted and anchored within the tower structure for further erection until the complete tower is mounted.

We fabricate Ginpoles made of high tensile aluminium with safe lifting loads from 10KN up to 50KN. The standard lengths of our Ginpoles range between 8 and 20 meters. Standard wise we produce Ginpoles with Internal Rope Guidance System, which has integrated pulleys for the guidance of the rope. Upon request we also produce Ginpoles with external rope guidance system. We also produce longer Ginpoles length upon request. Different length are available upon request.

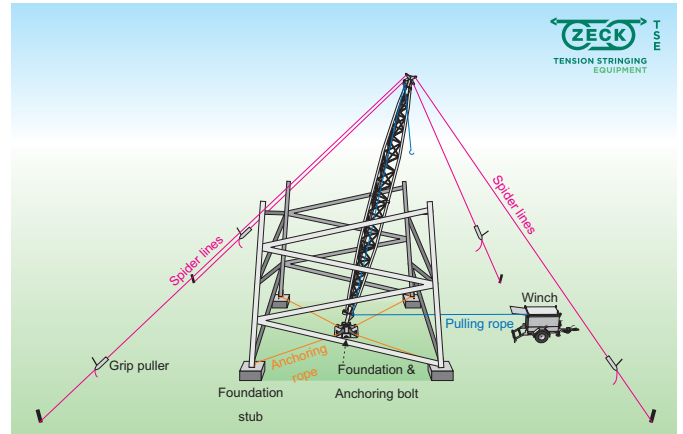


Lifting load is indicated in 3 positions: pos.1 vertical, pos. 2 with 20 degree inclination installed in the tower center, pos. 3 with 20 degree attached to a towerleg. Please note that Ginpoles usually are used in included position.

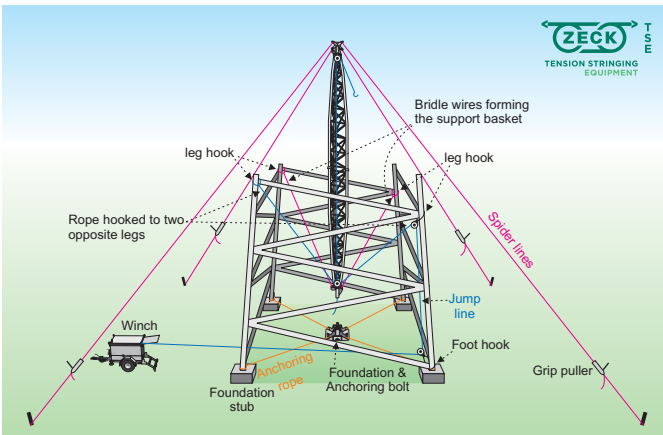
part #	part # Zeck GmbH	L Total length m	C - safe lifting load (LL) (KN)			sections m	weight kg
			P1 Pos.1 a = 0°	P2 Pos.2 a = 20°	P3 Pos.3 a = 20°		
GPI-01-0800	77-2220	8	10	6	2.4	4+4	75
GPI-01-1000	77-2222	10	10	6	2.4	4+4+2	88
GPI-01-1200	77-2224	12	10	6	2.4	4+4+4	99
GPI-02-1200	77-2250	12	25	15	6	4+4+4	152
GPI-02-1600	77-2252	16	25	15	6	4+4+4+4	221
GPI-02-2000	77-2254	20	25	15	6	5+5+5+5	278
GPI-03-1200	77-2270	12	35	21	8	4+4+4	198
GPI-03-1600	77-2272	16	35	21	8	4+4+4+4	245
GPI-03-2000	77-2274	20	35	21	8	5+5+5+5	283
GPI-03-2500		25	35	21	8	5+5+5+5+5	343
GPI-05-1600	77-2280	16	50	30	12	4+4+4+4	278
GPI-05-2000	77-2282	20	50	30	12	5+5+5+5	325
GPI-05-2500		25	50	30	12	5+5+5+5+5	395



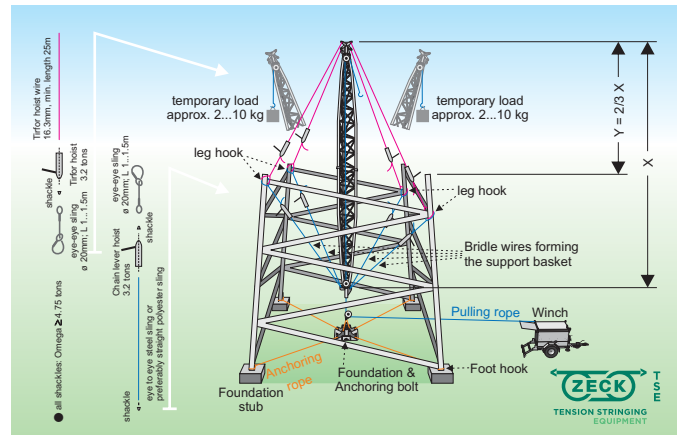
1. Assembly and Positioning of the Ginpole.



2. Using the Ginpole on the ground.



3. Lifting the Ginpole.



4. Using the Ginpole as a centrally placed floating Ginpole.

