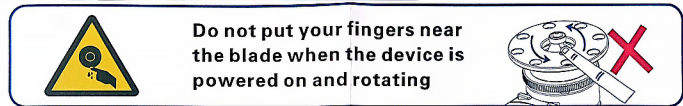
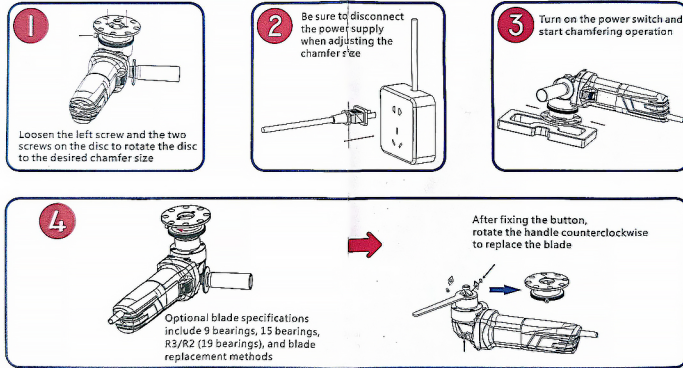
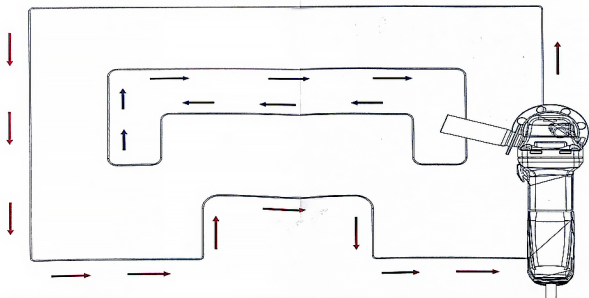


# UNIFAST<sup>®</sup> JT-100

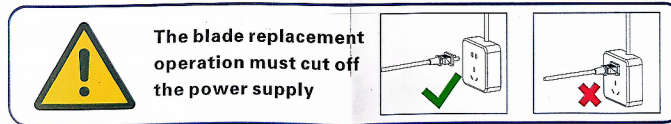
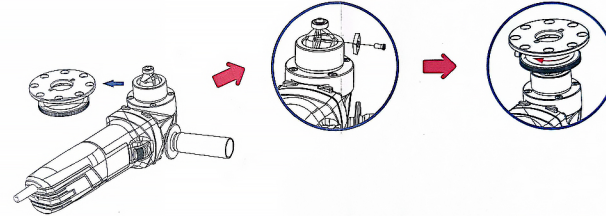
## Quick Guide to Product Use



Cutting direction: the outer chamfer of the workpiece advances counterclockwise, and the inner chamfer of the workpiece advances clockwise (note taking: **outer counterclockwise, inner clockwise**)

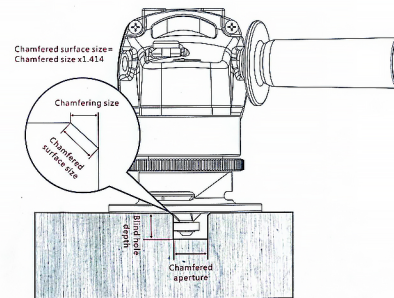


## Blade replacement steps

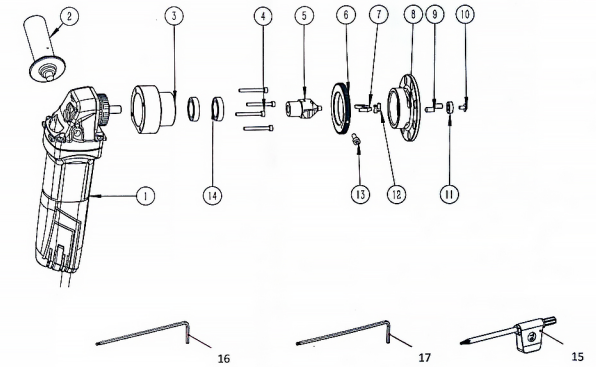


## Product Technical Parameters

Product Name	JT-100	
chamfer type	C-angle/R-angle	
Chamfering size	0-3mm (C-angle)/R2, R3 (R angle)	
Maximum speed	12000r/min	
power	710W	
Voltage	220V-50Hz	
Chamfered aperture	(9 bearings) ≥ 10mm	<input type="checkbox"/>
	(15 bearings) ≥ 16mm	<input type="checkbox"/>
	(19 bearings) ≥ 20mm	<input type="checkbox"/>
Chamfered plate thickness	(9 bearings) ≥ 2mm	<input type="checkbox"/>
	(15 bearings) ≥ 5mm	<input type="checkbox"/>
	(19 bearings) ≥ 5mm	<input type="checkbox"/>
Blind hole depth	(9 bearings) ≥ 8mm	<input type="checkbox"/>
	(15 bearings) ≥ 10mm	<input type="checkbox"/>
	(19 bearings) ≥ 12mm	<input type="checkbox"/>
Net weight	2.5 kilograms	
Gross weight	2.7 kilograms	



## Index diagram of chamfering machine components



Part number	Part name	quantity
1	Bosch host	1
2	chamfering machine handle	1
3	bearing seat	1
4	Cylindrical screw M4 * 35	4
5	- Knife disc	1
6	adjustment and cap	1
7	Blade SDM09T304	2
8	disc	1
9	Tightening screw M4 * 8	2
10	Round cup screw M5 * 8	1
11	Deep groove bearing 698ZZ	1
12	Plum blossom screw M4 * 10	2
13	Cylindrical screw M4 * 8	1
14	Deep groove bearing 6804ZZ	2
15	Plum wrench T16	1
16	Internal hexagonal wrench 2.5mm	1
17	Internal hexagonal wrench 3mm	1
18	instructions	1