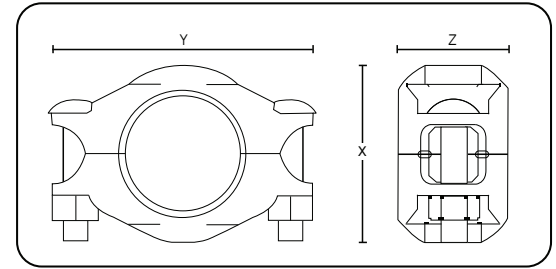


**Pressure Rating:
300 psi (20 bar).**

- Housing - Painted ductile iron conform to ASTM A536, Gr. 65-45-12.
Color: RAL3000.



- Gaskets - EPDM rubber suitable for hot and cold water service.
**EPDM peroxide cured gaskets available upon request (for special applications such as chloramines, etc...)*

- Bolts / nuts - Heat-treated carbon manganese steel track bolts to ASTM A449-83a and A183 Gr. 2. Minimum tensile strength of 110,000 psi (758 MPa), zinc electroplated. Heavy hex nuts to ASTM A563.

NOTE
For the use of Piedmont's couplings on cyclic axial displacement systems, please consult with Piedmont for design and installation guidance.



Style L Specifications					
Nominal size* (inch)	Dimensions inch (mm)			Approx. weight lb (kg)	Working pressure psi (bar)
	X	Y	Z		
1	2.28 (58.0)	3.86 (98.0)	1.77 (45.0)	0.93 (0.42)	300 (20)
1-1/4	2.68 (68.0)	4.17 (106.0)	1.77 (45.0)	1.17 (0.53)	300 (20)
1-1/2	2.87 (73.0)	4.41 (112.0)	1.77 (45.0)	1.21 (0.55)	300 (20)
2	3.39 (86.0)	5.04 (128.0)	1.77 (45.0)	1.50 (0.68)	300 (20)
2-1/2	3.78 (96.0)	5.43 (138.0)	1.77 (45.0)	1.85 (0.84)	300 (20)
3	4.41 (112.0)	6.22 (158.0)	1.77 (45.0)	2.09 (0.95)	300 (20)
4	5.63 (143.0)	7.56 (192.0)	1.97 (50.0)	3.17 (1.44)	300 (20)
5	6.65 (169.0)	8.78 (223.0)	1.97 (50.0)	4.39 (1.99)	300 (20)
6	7.87 (200.0)	9.92 (252.0)	1.97 (50.0)	5.07 (2.30)	300 (20)
8	10.00 (254.0)	12.68 (322.0)	2.28 (58.0)	8.38 (3.80)	300 (20)
10	12.36 (314.0)	15.28 (388.0)	2.44 (62.0)	14.6 (6.60)	300 (20)
12	14.37 (365.0)	17.44 (443.0)	2.44 (62.0)	18.85 (8.55)	300 (20)

*14.0" to 24.0" also available upon request.