

AQUALINE 80AQ

CARTRIDGE FILTER HOUSING FOR HIGH FLOW APPLICATIONS

CARTRIDGE FILTER HOUSING DATASHEET

ARTICLE CODE : 80AQ15-60 (Non coded)

GENERAL INFORMATION

Aqualine 80AQ15 is a cartridge filter housing of standard 8" diameter designed to meet the demands of cost effective, continuous long term use as a housing for cartridge filtration. Manufactured by Codeline using corrosion resistant epoxy / glass composite & designed to operate at 150 psi pressure. Aqualine housing can accommodate single Aqualine cartridge of 60" long. Aqualine housings meet the demanding needs of sea water applications.

CERTIFICATION

- CE Certified

UNIQUE BENEFITS

- Quick opening / closing mechanism: The user friendly Quick opening / closing mechanism eliminates the requirement of special tools allowing access to elements in seconds. Change-outs are very quick, saving labor time & downtime
- Corrosion resistant FRP: Manufactured using FRP technology, Aqualine housings are hassle free & cost effective alternative to metallic housings
- Stackable design: Aqualine housings can be mounted horizontally on a skid or a RO rack and also offer the flexibility for vertical installations to save valuable floor space
- Modular & scalable: Aqualine housings are modular in design and can be scaled

UNIQUE FEATURES

- up to higher capacities as per demand
- Super duplex F / C ports for sea water compatibility
- 3" IPS grooved multi-porting option for connecting vessels to each other
- Drain port for flushing out residual water
- Air vent port for purging out air
- Provision for installing feed sample valve directly on the vessel head
- Mirror finish internal surface for easy & quick loading & unloading of elements
- Housing exterior coated with high gloss polyurethane UV resistant paint

SPECIFICATION*

MODEL NUMBER	DRAWING NO.	DESIGN / OPERATING PRESSURE	MAX. OPERATING TEMPERATURE	QUALIFICATION PRESSURE	ELEMENT LENGTH
AQUALINE 80AQ15-60(NC)	200268	150 PSI/10.3 Bar	113°F/45°C	900 PSI/62 Bar	60"

* Specifications subject to change without notice (for more details refer to model specific engineering drawings)

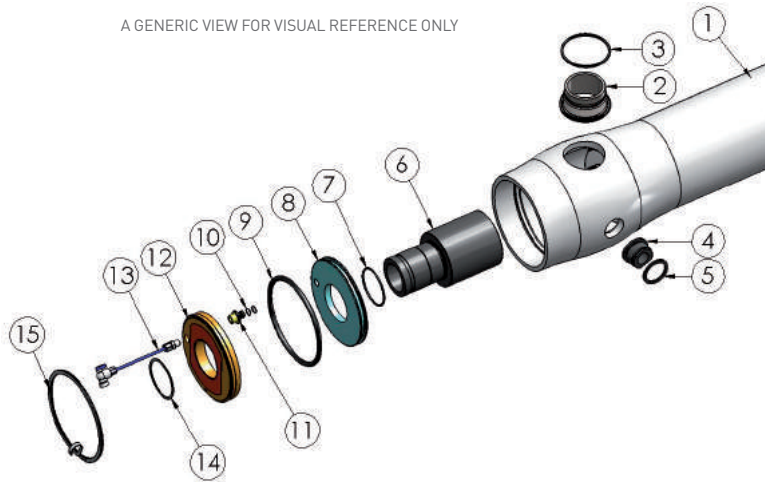
AQUALINE 80AQ

CARTRIDGE FILTER HOUSING FOR HIGH FLOW APPLICATIONS

CARTRIDGE FILTER HOUSING DATASHEET

EXPLODED VIEW & DETAILS - FEED / PRODUCT END

A GENERIC VIEW FOR VISUAL REFERENCE ONLY



DRG REF	QTY	DESCRIPTION	MATERIAL	80AQ15-60 NON CODED
				PART NUMBER
1	1	Shell	Filament wound epoxy / glass composites. Head locking grooves integrally wound in place	200068
2	AR	3" F / C port	CD3MWCuN (super duplex)	96327
3	AR	3" F / C port seal	Ethylene propylene	96119
4	1	1" FNPT drain port	Engineering thermoplastic	97988
4	1	1" FNPT drain port (optional)	CD3MWCuN (super duplex)	17180
5	1	1" seal (for engineering thermoplastic drain port)	Ethylene propylene – square seal	97989
5	1	1" seal (for super duplex drain port)	Ethylene propylene – square seal	45340
6	1	3" product port	Engineering thermoplastic	17187
7	1	Product port seal	Ethylene propylene – O ring	17128
8	1	Sealing plate – product side	Engineering thermoplastic	17175
9	1	Head seal	Ethylene propylene – O ring	96000
10	2	¼" air vent port seal	Ethylene propylene – O ring	45286
11	1	¼" air vent port	Engineering thermoplastic	17174
12	1	Bearing plate – product side	6061-T6 Aluminum alloy – hard anodized	17176
13	1	Air vent assembly	Engineering thermoplastic - assembly	17185
14	1	3" port retaining ring	316 Stainless steel	17127
15	1	Quick release spiral ring	316 Stainless steel	47336
16*	2	Saddle	Engineering thermoplastic	52169
17*	2	Strap assembly	304 Stainless steel – PVC cushion	45042
18*	4	Strap screw	5/16-18 UNC X 2.5" long - 18-8 stainless steel	46265

* Not shown in the above exploded view

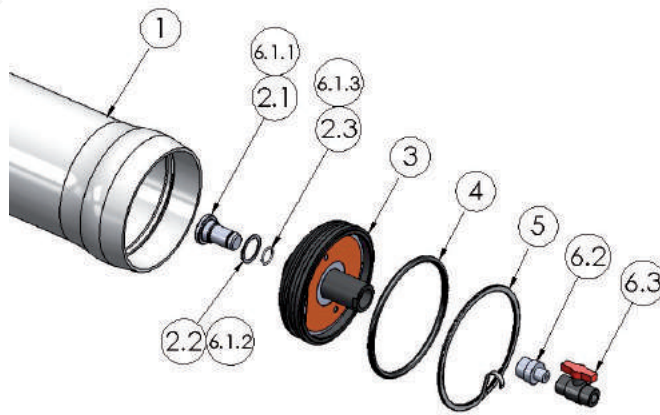
AQUALINE 80AQ

CARTRIDGE FILTER HOUSING FOR HIGH FLOW APPLICATIONS

CARTRIDGE FILTER HOUSING DATASHEET

EXPLODED VIEW & DETAILS - DEAD END

A GENERIC VIEW FOR VISUAL REFERENCE ONLY



DRG REF	QTY	DESCRIPTION	MATERIAL	80AQ15-60 NON CODED
				PART NUMBER
1	1	Shell	Filament wound epoxy / glass composites. Head locking grooves integrally wound in place	200068
2	1	Blind plug kit assembly		17286
2.1	1	Blind plug – elliptical head	Engineering thermoplastic	98732
2.2	4	Spacers	Engineering thermoplastic	AR
2.3	1	Blind plug seal	Ethylene propylene – O ring	45298
3	1	Elliptical head	Engineering thermoplastic	98731
4	1	Head seal	Ethylene propylene – O ring	96000
5	1	Quick release spiral ring	316 stainless steel	47336
6	1	Sample valve kit (optional)		17467
6.1	1	Sample valve plug kit		17468
6.1.1	1	Sample valve plug	Engineering thermoplastic	98761
6.1.2	4	Spacers	Engineering thermoplastic	AR
6.1.3	1	Plug seal	Ethylene propylene – O ring	45298
6.2	1	Adapter threaded	Engineering thermoplastic	96526
6.3	1	½" Ball valve	Engineering thermoplastic	96524



54/18 Bui Quang La Str, Ward 12,
Go Vap Dist, HCMC, Vietnam.
T: 028 35 888 961/963
E: info@ats-water.com
www.atswatertechnology.com

PROCESS TECHNOLOGIES

PENTAIR ADVANCED FILTRATION, L/52-55, VERNA INDUSTRIAL ESTATE ,VERNA ,GOA, INDIA-403 722 ADVANCEDFILTRATION.PENTAIR.COM

Note: The information and data contained in this document are based on our general experience and are believed to be correct. They are given in good faith and are intended to provide a guideline for the selection and use of our products. Since the conditions under which our products may be used are beyond our control, this information does not imply any guarantee of final product performance and we cannot accept any liability with respect to the use of our products. The quality of our products is guaranteed under our conditions of sale. Existing industrial property rights must be observed.
DS AQUALINE 80AQ15 NC EN 1417 © 2017 Pentair. All Rights Reserved.

