

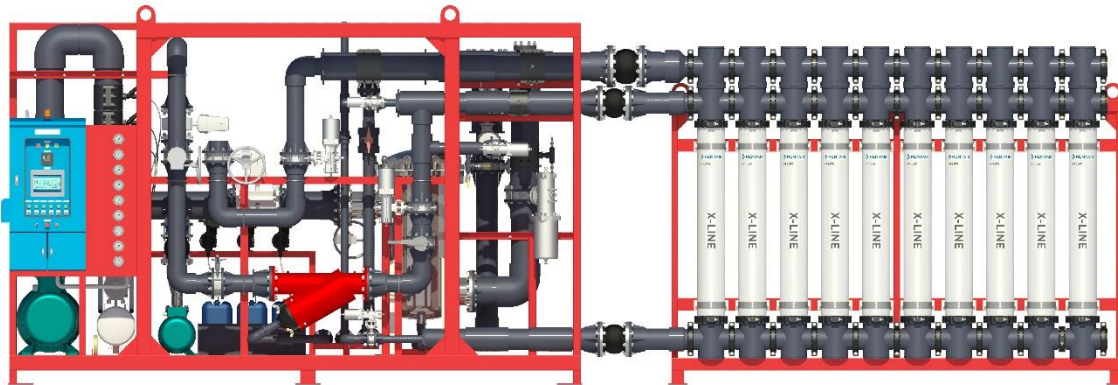
**ULTRAFILTRATION SYSTEM
ADES X-LINE
Series**

**Model
ADES-UFX-206-00**

GENERAL INFORMATION

ADES X-line is the dead-end ultrafiltration product line and process where the individual XF75 membrane modules is positioned vertically in a newly developed system called X-line.

X-line is unique in the market for its serviceability, scalability and flexibility. With the X-line concept one can construct a plant with minimum design efforts and constraints



*The above photo of ADES-UFX-206-00 is for illustration purpose only.

ADES-UFX-206-00 system includes:

- ✓ Feed & Backwash pump with IE3, IP55 motor.
- ✓ UF modules (XF75 - Pentair).
- ✓ 200µm Amiad manual strainer.
- ✓ uPVC Sch80 piping with NSF / ANSI certificate.
- ✓ PLC & HMI 9" control panel.
- ✓ Liquid filled pressure gauges (panel mount).
- ✓ Flow indicators.
- ✓ Automatic control with pneumatic butterfly valves.
- ✓ Air compressor.
- ✓ SS400 with 3 layers epoxy coated steel skid frame.
- ✓ Connection with JIS10K Flange.
- ✓ 380 - 415V / 3Phase / 50Hz power supply.

Performance & Quality

- Turbidity ≤ 0.1 NTU.
- SDI ≤ 3 .
- Membrane filtration provides 99.9999% (LOG6) reduction of bacteria (*Pseudomonas diminuta*) and 99.99% (LOG 4) reduction of virus (MS2 colifages) by mechanical means. EPA Est. No. 090374-NLD-001.

System Features / Benefits

- Pre-engineered, easy to operate, plug and play systems.
- Fully automated system.
- Optimized footprint and low cost.
- Designed to fit in a high cube container.

Feed Water Quality¹

Parameter	Unit	Value
Turbidity	NTU	0 - 5
TSS	mg/L	0 - 10
TOC	mg/L	0 - 2
Color	Hazen	0 - 10
Alkalinity	mg CaCO ₃ /L	50 - 300
pH	-	6.5 - 8.5
Temperature	°C	0 - 40

¹Please contact us if the feed water source is worse than the above standard.

UF Membrane Specifications

Model	XF75
Effective Membrane area (m ²)	75
Membrane Material	PES / PVP
Housing Material	PVC white
Potting Material	PU Resin
Filtration Flux (LMH)	Up to 90
Cleaning Chemical Resistance	Chlorine 200 ppm
	Acid pH = 2
	Base pH = 12

Operating Process Parameter

Flow Type	Inside - Out
Filtration Type	Dead End Mode
Operating Temperature	Max 40°C (non-freezing)
Filtration TMP	0.2 - 0.8 bar
Backwash TMP	1.0 - 2.5 bar

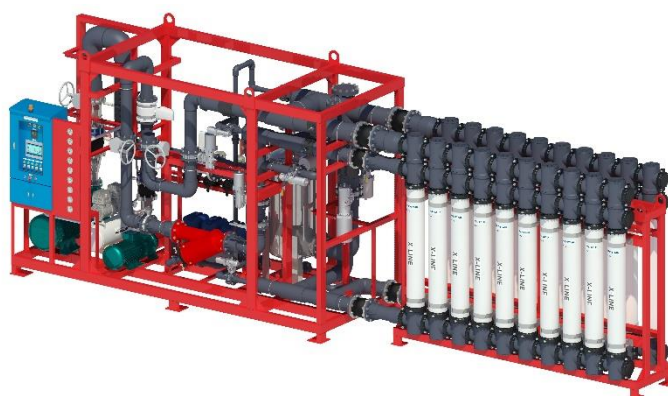
System and Operating Configuration

Model	ADES-UFX-206-00
No. of Membranes	12
Dimension ² L x W x H (mm)	7800 x 2000 x 3000
Approx. Weight (kg)	3430
Net Production Flow (m ³ /h)	60 - 72

²The dimensions of the system may vary and subject to change without prior notice.

Mechanical Connections (Flange)²

Feed Port	DN150 (6")
Backwash Port	DN250 (10")
Permeate Port	DN125 (5")
Concentrate Port	DN200 (8")
Membrane Connection	X-LINE



ATS WATER TECHNOLOGY CO., LTD.

Headquarters: 54/18 Bui Quang La, Ward 12, Go Vap District, HCMC, Viet Nam

Office: 12 DHT10B, Dong Hung Thuan Ward, District 12, HCMC, Viet Nam

[T] (028) 6258 5368 - (028) 6291 9568 [E] info@atswatertechnology.com

[W] www.atswatertechnology.com

