

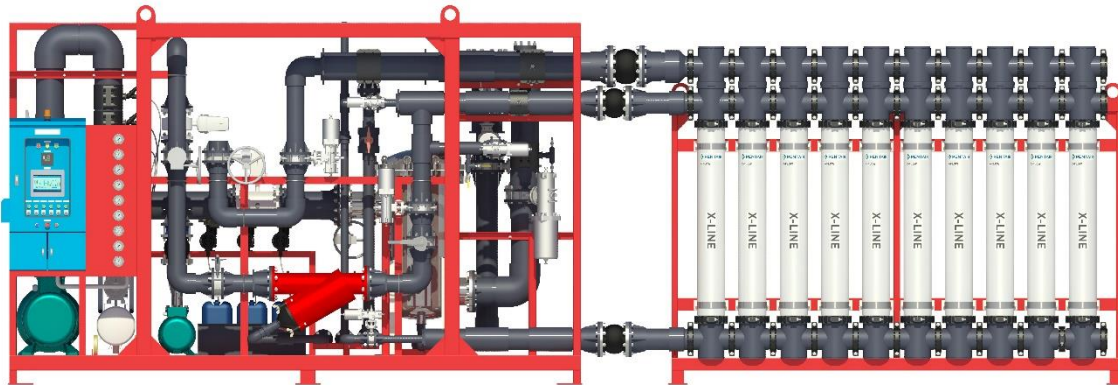
**ULTRAFILTRATION SYSTEM
ADES X-LINE
Series**

**Model
ADES-UFX-205-00**

GENERAL INFORMATION

ADES X-line is the dead-end ultrafiltration product line and process where the individual XF75 membrane modules is positioned vertically in a newly developed system called X-line.

X-line is unique in the market for its serviceability, scalability and flexibility. With the X-line concept one can construct a plant with minimum design efforts and constraints



*The above photo of ADES-UFX-205-00 is for illustration purpose only.

ADES-UFX-205-00 system includes:

- ✓ Feed & Backwash pump with IE3, IP55 motor.
- ✓ UF modules (XF75 - Pentair).
- ✓ 200µm Amiad manual strainer.
- ✓ uPVC Sch80 piping with NSF / ANSI certificate.
- ✓ PLC & HMI 9" control panel.
- ✓ Liquid filled pressure gauges (panel mount).
- ✓ Flow indicators.
- ✓ Automatic control with pneumatic butterfly valves.
- ✓ Air compressor.
- ✓ SS400 with 3 layers epoxy coated steel skid frame.
- ✓ Connection with JIS10K Flange.
- ✓ 380 - 415V / 3Phase / 50Hz power supply.

Performance & Quality

- Turbidity ≤ 0.1 NTU.
- SDI ≤ 3 .
- Membrane filtration provides 99.9999% (LOG6) reduction of bacteria (*Pseudomonas diminuta*) and 99.99% (LOG 4) reduction of virus (MS2 colifages) by mechanical means. EPA Est. No. 090374-NLD-001.

System Features / Benefits

- Pre-engineered, easy to operate, plug and play systems.
- Fully automated system.
- Optimized footprint and low cost.
- Designed to fit in a high cube container.

Feed Water Quality¹

| Parameter | Unit | Value |
|-------------|-------------------------|-----------|
| Turbidity | NTU | 0 - 5 |
| TSS | mg/L | 0 - 10 |
| TOC | mg/L | 0 - 2 |
| Color | Hazen | 0 - 10 |
| Alkalinity | mg CaCO ₃ /L | 50 - 300 |
| pH | - | 6.5 - 8.5 |
| Temperature | °C | 0 - 40 |

¹Please contact us if the feed water source is worse than the above standard.

UF Membrane Specifications

| | |
|---|------------------|
| Model | XF75 |
| Effective Membrane area (m ²) | 75 |
| Membrane Material | PES / PVP |
| Housing Material | PVC white |
| Potting Material | PU Resin |
| Filtration Flux (LMH) | Up to 90 |
| Cleaning Chemical Resistance | Chlorine 200 ppm |
| | Acid pH = 2 |
| | Base pH = 12 |

Operating Process Parameter

| | |
|-----------------------|-------------------------|
| Flow Type | Inside - Out |
| Filtration Type | Dead End Mode |
| Operating Temperature | Max 40°C (non-freezing) |
| Filtration TMP | 0.2 - 0.8 bar |
| Backwash TMP | 1.0 - 2.5 bar |

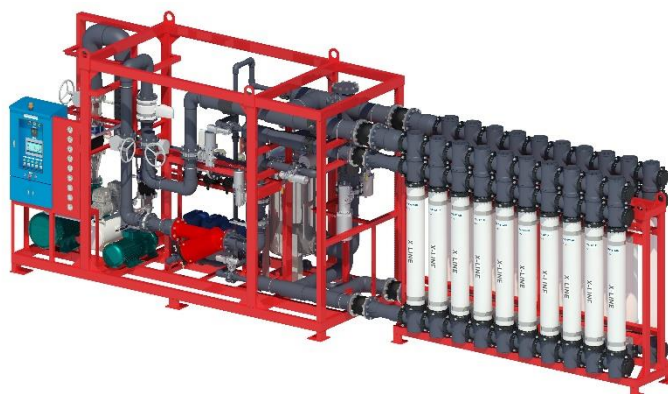
System and Operating Configuration

| | |
|--|--------------------|
| Model | ADES-UFX-205-00 |
| No. of Membranes | 10 |
| Dimension ² L x W x H (mm) | 5600 x 1600 x 2800 |
| Approx. Weight (kg) | 3060 |
| Net Production Flow (m ³ /h) | 48 - 60 |

²The dimensions of the system may vary and subject to change without prior notice.

Mechanical Connections (Flange)²

| | |
|---------------------|-------------|
| Feed Port | DN125 (5") |
| Backwash Port | DN250 (10") |
| Permeate Port | DN100 (4") |
| Concentrate Port | DN150 (6") |
| Membrane Connection | X-LINE |



ATS WATER TECHNOLOGY CO., LTD.

Headquarters: 54/18 Bui Quang La, Ward 12, Go Vap District, HCMC, Viet Nam

Office: 12 DHT10B, Dong Hung Thuan Ward, District 12, HCMC, Viet Nam

[T] (028) 6258 5368 - (028) 6291 9568 [E] info@atswatertechnology.com

[W] www.atswatertechnology.com

