

CODELINE® - ECOLINE 40L30N

4 INCH END ENTRY MEMBRANE HOUSING FOR COMMERCIAL APPLICATIONS

MEMBRANE HOUSING DATASHEET

ARTICLE CODE: ECOLINE 40L30N

GENERAL INFORMATION

Codeline Ecoline 40L30N is membrane housing of 4" diameter with end entry design. This is used for commercial RO applications upto a maximum operating pressure of 300 PSI. These are made up of epoxy / glass composite to meet the demands of long term and continuous use. Codeline Ecoline 40L30N can accommodate any standard make of 4" nominal diameter spiral-wound membrane element.

UNIQUE FEATURES

- Single piece head assembly manufactured by engineering thermoplastics provides high strength and superior chemical resistance
- Improved head seal captured in the head gives better sealing, minimizing leakage probability
- Integrally formed locking grooves provide better locking strength
- Mirror Finish ID for easy & quick loading and unloading of membranes
- Exteriors coated with high gloss polyurethane paint for UV resistance
- Head seal Area is formed by mandrel surface; hence more accurate
- Compact design for use in compact and low energy water treatment units
- Quick lock head retention system for quick onsite maintenance

CERTIFICATIONS

- Ecoline 40L30N - 2: CE certified
- Ecoline 40L30N - 3: CE certified

CODELINE ECOLINE 40L30N SPECIFICATION*

| MODEL NUMBER | DRAWING NUMBER | MAX. OPERATING PRESSURE | MAX. OPERATING TEMPERATURE | QUALIFICATION PRESSURE | ELEMENT LENGTH |
|-------------------------|----------------|-------------------------|----------------------------|------------------------|--|
| CODELINE ECOLINE 40L30N | 99373 | 300 PSI / 20 Bar | 120 °F / 49 °C | 1200 PSI / 82 Bar | -B1 (14") -C1 (21") -1**; -2; -3 |

Any make of 4" nominal diameter spiral-wound element with a 3/4" diameter male product water tube is easily accommodated.

* Specifications are subjected to change without prior notice (for more details refer to model specific engineering drawings)

** -1 is for 40" long housing

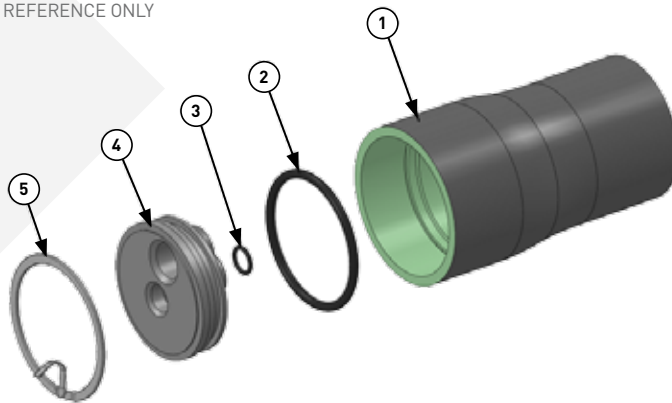
CODELINE® - ECOLINE 40L30N

4 INCH END ENTRY MEMBRANE HOUSING FOR COMMERCIAL APPLICATIONS

MEMBRANE HOUSING DATASHEET

EXPLODED VIEW & DETAILS

A GENERIC VIEW FOR VISUAL REFERENCE ONLY



PARTS TABLE

| DRG REG | QTY | DESCRIPTION | MATERIAL | 40L30N |
|------------|-----|---------------------------|--|---------------|
| | | | | PART NUMBER |
| 1 | 1 | Shell | Filament Wound Epoxy / Glass composite - Head Locking grooves integrally wound in place. | Order section |
| 2 | 2 | Head Seal | Ethylene Propylene - O Ring | 45317 |
| 3 | 2 | PWT Seal | Ethylene Propylene - O Ring | 45296 |
| 4 | 2 | End Plug Sub Assembly | Engineering Thermoplastic | 95929 |
| 5 | 2 | Retaining Ring | 316 Stainless Steel | 46414 |
| 6* | 2 | Saddle - optional | Engineering Thermoplastic | 45058 |
| 7* | 2 | Strap Assembly - optional | 304 Stainless Steel - PVC Cushion | 47459 |

* Not shown in the exploded view and are optional



CODELINE®

PENTAIR WATER INDIA PVT. LTD. L / 52 - 55, VERNA INDUSTRIAL ESTATE, VERNA, GOA, INDIA - 403 722 WWW.CODELINE.COM



Headquarters: 54/18 Bui Quang La, Ward 12, Go Vap District, HCMC, Viet Nam
 Office: 12 DHT10B, Dong Hung Thuan Ward, District 12, HCMC, Viet Nam
 Phone: (028) 6258 5368 - (028) 6291 9568
 Email: info@atswatertechnology.com
 Website: www.atswatertechnology.com

Note: The information and data contained in this document are based on our general experience and are believed to be correct. They are given in good faith and are intended to provide a guideline for the selection and use of our products. Since the conditions under which our products may be used are beyond our control, this information does not imply any guarantee of final product performance and we cannot accept any liability with respect to the use of our products. The quality of our products is guaranteed under our conditions of sale. Existing industrial property rights must be observed.

DS CODELINE ECOLINE 8 INCH SERIES EN 3915 © 2015 Pentair. All Rights Reserved.