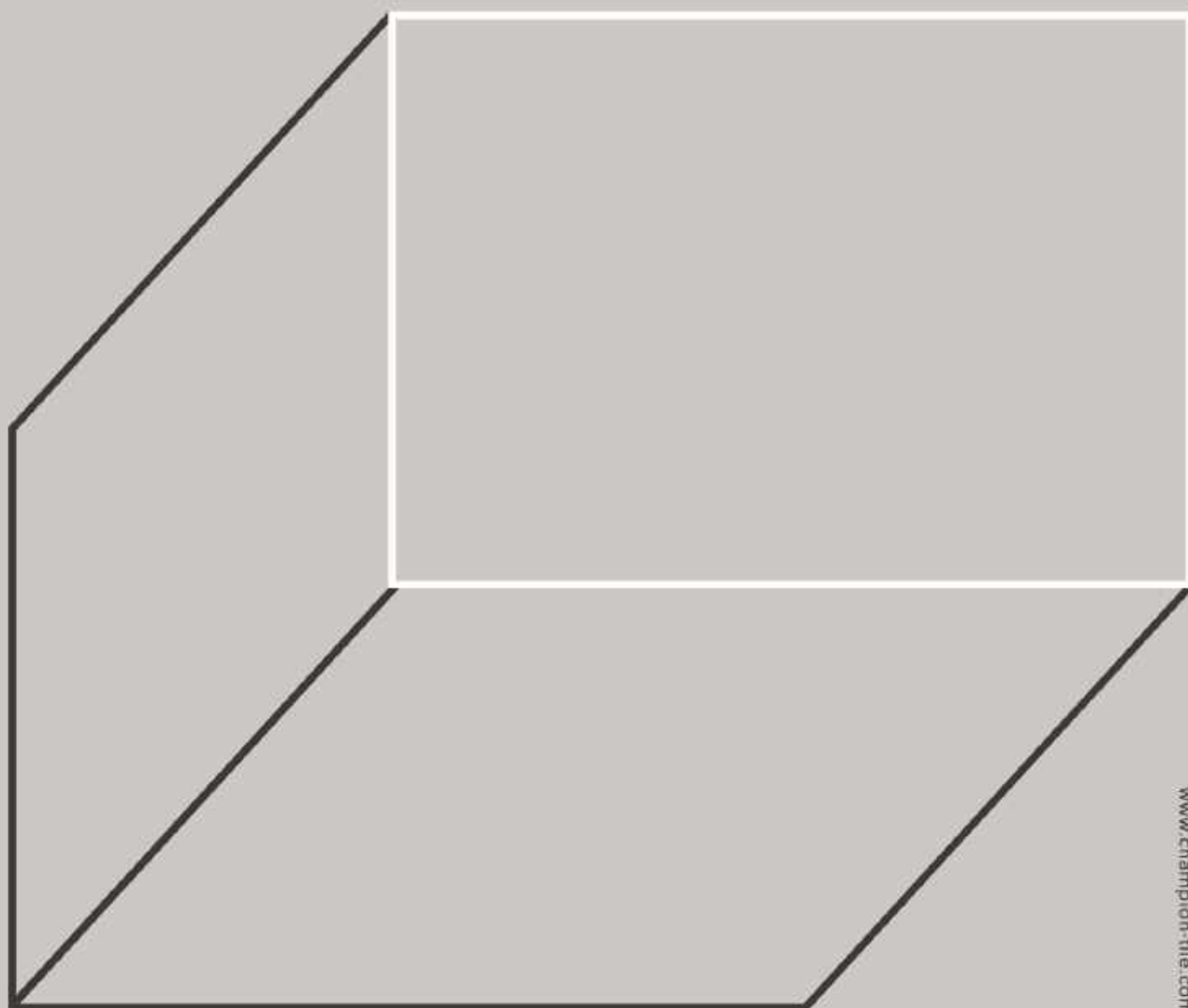


2020 CATALOGUE

T R A N S P I R E *by Champion*





---

INDEX

---

DESIGN

06	COLOR BOARD
12	MINERVA

---

MARBLE

20	BUILD
----	-------

---

STONE

30	BASALT
36	BASALTINA
44	DIANO REALE
52	EROS
60	FOLIATION
66	FONTANA ROSA
76	GRANULES-FINE
82	JUNO GRANITE
90	LAVAGRIGIA
106	LIME STONE
114	LIPICA
124	MIXED STONE
134	NEUTRAL
140	PIASENTINA
146	RIB
152	SURFACE

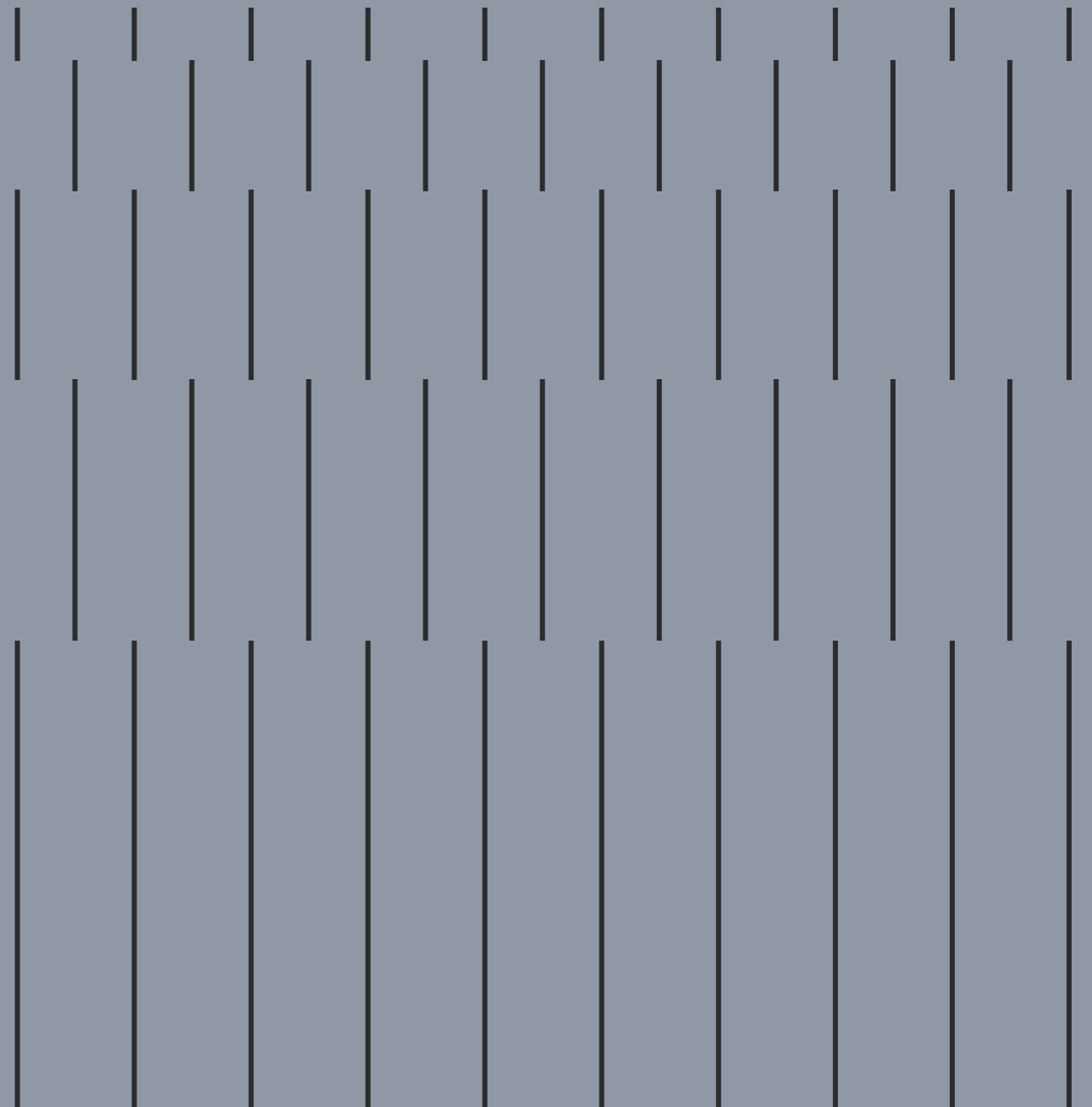
---

TIMBER

160	ABERDEEN
166	CHERRY
172	EVERGLADE
178	LEGNO
184	MALTA
190	SANTIAGO

---

DESIGN DISTINCTION  
CHAMPION'S  
DISTINCTIVE SOLUTION  
WITH METAL, RESIN,  
AND CONCRETE DESIGN  
LOOK





## COLOR BOARD

SEACLIFF BLUE / FOSSIL GREY  
VC73006A / VC73003A

Matt  
7.5x30 cm / 3x11.8"



## COLOR BOARD

### COLOR



WINTER WHITE  
**VC73001A**  
7.5X30 CM  
3X11.8"



720° VR



FOSSIL GREY  
**VC73003A**  
7.5X30 CM  
3X11.8"



PEWTER GREY  
**VC73002A**  
7.5X30 CM  
3X11.8"



SILVER GREY  
**VC73005A**  
7.5X30 CM  
3X11.8"



SEACLIFF BLUE  
**VC73006A**  
7.5X30 CM  
3X11.8"



NAVY BLUE  
**VC73007A**  
7.5X30 CM  
3X11.8"

WINTER WHITE / SEACLIFF BLUE  
**VC73001A / VC73006A**  
Matt  
7.5x30 cm / 3x11.8"

# COLOR BOARD

## SIZE / FINISH



7.5X30 cm  
3x11.8"

Matt



Shade Variation



## PRODUCT SPECIFICATIONS

COLOR   SIZE FINISH		7.5x30 cm 3x11.8"	Regular
WINTER WHITE	Matt	VC73001A	•
FOSSIL GREY	Matt	VC73003A	•
PEWTER GREY	Matt	VC73002A	•
SILVER GREY	Matt	VC73005A	•
SEACLIFF BLUE	Matt	VC73006A	•
NAVY BLUE	Matt	VC73007A	•

	Water Absorption (%)	Dimension (mm)		Thickness	Straightness of Sides	Central Warpage	Edge Curvature	Warpage	Rectangularity
		Length	Width						
EN14411 (ISO 13006)	+0.5~+3.0	± 1.8	± 0.9	± 0.5	± 1.5	± 1.5	± 1.5	± 1.5	± 1.5
7.5X30 CM 3X11.8"	≤ 2.0	± 1.2	± 0.8	± 0.4	± 0.8	+0.8~-0.4	+0.8~-0.4	± 0.8	± 0.8

	Breaking Strength Modulus of Rupture	Thermal Shock Resistance	Resistance to Chemical	Glazed Crack Resistance	Frost Resistance	Stain Resistance
EN14411 (ISO 13006)	S≥1100N / R≥30N/mm <sup>2</sup>	Test method available	Minimum GB	Resistant	Resistant	Minimum class 3
7.5X30 CM 3X11.8"	S≥1200N / R≥30N/mm <sup>2</sup>	Resistant	Minimum GLA	Resistant	Resistant	Minimum class 4

PACKING LIST	Pcs Per M <sup>2</sup>	Pcs Per Box	Weight Per Box	Boxes Per PLT
7.5X30 CM 3X11.8"	44.4	40	20.1	91

## MINERVA

STEEL  
G60809  
Natural  
60x60 / 23.6x23.6"





# MINERVA

## COLOR



SAND  
**G60810**  
60X60 CM  
23.6X23.6"



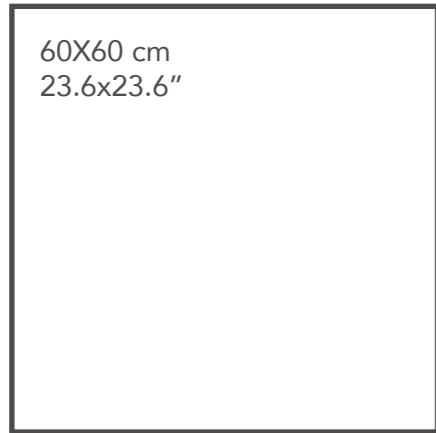
GREY  
**G60813**  
60X60 CM  
23.6X23.6"



STEEL  
**G60809**  
60X60 CM  
23.6X23.6"

STEEL  
**G60809**  
Natural  
60x60 / 23.6x23.6"

## SIZE / FINISH



Natural



Natural



Shade Variation



## PRODUCT SPECIFICATIONS

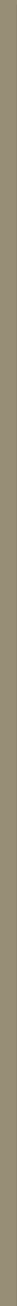
COLOR   SIZE FINISH	60x60 cm 23.6x23.6"	Regular
SAND Natural	G60810	•
GREY Natural	G60813	•
STEEL Natural	G60809	•

	Water Absorption (%)	Dimension (mm)		Thickness	Straightness of Sides	Central Warpage	Edge Curvature	Warpage	Rectangularity
		Length	Width						
EN14411 (ISO 13006)	≤ 0.5	± 2.0	± 2.0	± 0.5	± 1.5	± 2.0	± 2.0	± 2.0	± 2.0
60X60 CM 23.6X23.6"	≤ 0.5	± 0.4	± 0.4	± 0.4	± 0.4	+0.8~-0.4	+0.8~-0.4	± 1.0	± 0.6

	Breaking Strength Modulus of Rupture	Thermal Shock Resistance	Resistance to Chemical	Glazed Crack Resistance	Frost Resistance	Stain Resistance
60X60 CM 23.6X23.6"	S≥2200N / R≥38N/mm <sup>2</sup>	Resistant	Minimum GLA	Resistant	Resistant	Minimum class 4

PACKING LIST	Pcs Per M <sup>2</sup>	Pcs Per Box	Weight Per Box	Boxes Per PLT
60X60 CM 23.6X23.6"	2.78	4	32	64

MARBLE MARVELOUS  
CHAMPION'S  
MARVELOUS SOLUTION  
IN MARBLE LOOK





## BUILD

SAND  
GD612110  
Natural  
60x120 / 23.6x47.2"

GREY  
GD60112  
Natural  
60x60 / 23.6x23.6"



## COLOR



SAND  
**GD612110**  
60X120 CM  
23.6X47.2"



CHARCOAL  
**GD612113**  
60X120 CM  
23.6X47.2"

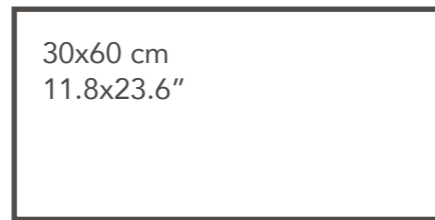
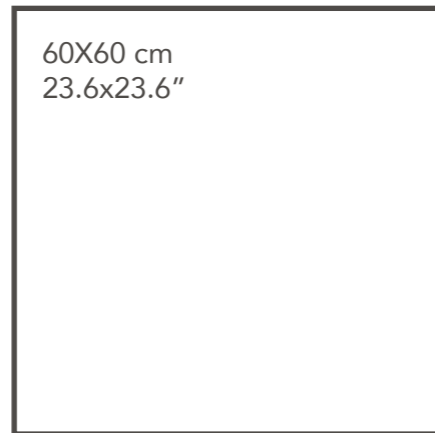
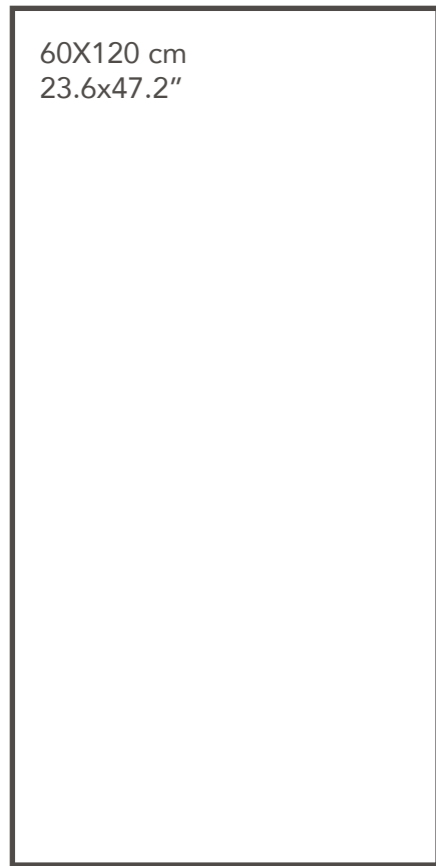


TAUPE  
**GD612111**  
60X120 CM  
23.6X47.2"



GREY  
**GD612112**  
60X120 CM  
23.6X47.2"

## SIZE / FINISH



Grip



Natural



Grip



Natural



Shade Variation



## PRODUCT SPECIFICATIONS

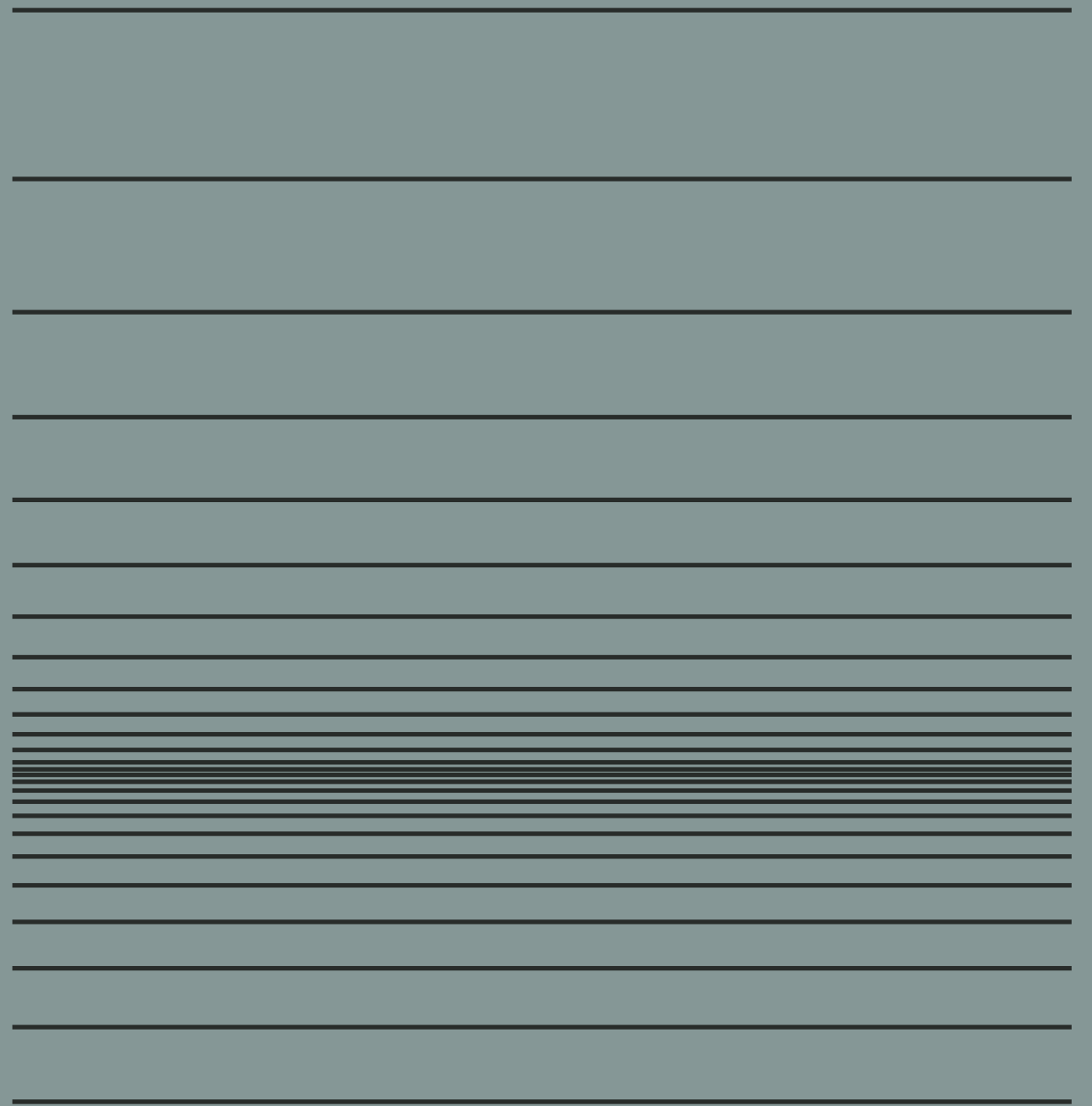
COLOR   SIZE FINISH	30x60 cm 11.8x23.6"	60x60 cm 23.6x23.6"	Regular	By Request	60x120 cm 23.6x47.2"	
SAND	Grip	GD63110R	GD60110R	-	•	-
	Natural	GD63110	GD60110	•	-	GD612110
TAUPE	Grip	GD63111R	GD60111R	-	•	-
	Natural	GD63111	GD60111	•	-	GD612111
GREY	Grip	GD63112R	GD60112R	-	•	-
	Natural	GD63112	GD60112	•	-	GD612112
CHARCOAL	Grip	GD63113R	GD60113R	-	•	-
	Natural	GD63113	GD60113	•	-	GD612113

	Water Absorption (%)	Dimension (mm)		Thickness	Straightness of Sides	Central Warpage	Edge Curvature	Warpage	Rectangularity
		Length	Width						
EN14411 (ISO 13006)	≤ 0.5	± 2.0	± 1.8	± 0.5	± 1.5	± 2.0	± 2.0	± 2.0	± 2.0
30X60 CM 11.8X23.6"	≤ 0.5	± 0.4	± 0.4	± 0.4	± 0.4	+0.8~-0.4	+0.8~-0.4	± 1.0	± 0.6
60X60 CM 23.6X23.6"	≤ 0.5	± 0.4	± 0.4	± 0.4	± 0.4	+0.8~-0.4	+0.8~-0.4	± 1.0	± 0.6
60X120 CM 23.6X47.2"	± 0.5	± 0.5	± 0.5	± 0.5	± 0.5	+0.8~-0.4	+0.8~-0.4	± 1.0	± 0.6

	Breaking Strength Modulus of Rupture	Thermal Shock Resistance	Resistance to Chemical	Glazed Crack Resistance	Frost Resistance	Stain Resistance
EN14411 (ISO 13006)	S≥1300N / R≥35N/mm <sup>2</sup>	Test method available	Minimum GB	Resistant	Resistant	Minimum class 3
30X60 CM 11.8X23.6"	S≥2200N / R≥38N/mm <sup>2</sup>	Resistant	Minimum GLA	Resistant	Resistant	Minimum class 4
60X60 CM 23.6X23.6"	S≥2200N / R≥38N/mm <sup>2</sup>	Resistant	Minimum GLA	Resistant	Resistant	Minimum class 4
60X120 CM 23.6X47.2"	S≥2200N / R≥38N/mm <sup>2</sup>	Resistant	Minimum GLA	Resistant	Resistant	Minimum class 4

PACKING LIST	Pcs Per M <sup>2</sup>	Pcs Per Box	Weight Per Box	Boxes Per PLT
30X60 CM 11.8X23.6"	5.56	8	31.84	48
60X60 CM 23.6X23.6"	2.78	4	32	64
60X120 CM 23.6X47.2"	1.39	2	36.08	48

STONE SELECT  
CHAMPION'S SELECTED  
TIMELESS SOLUTION IN  
STONE LOOK







## BASALT

GREY / DARK GREY  
GD49119 / GD49120  
Natural  
45x90 / 17.7x35.4"



## BASALT

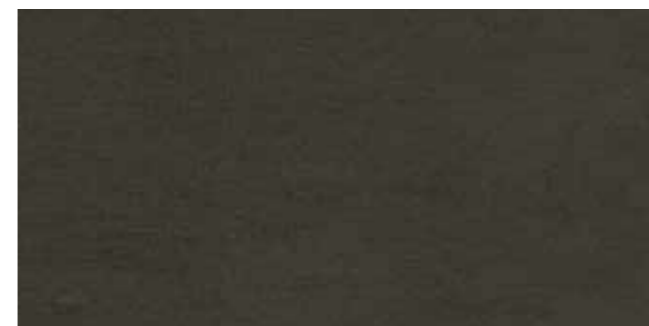
### COLOR



GREY  
**GD49119**  
45X90 CM  
17.7X35.4"



DARK GREY  
**GD49120**  
45X90 CM  
17.7X35.4"

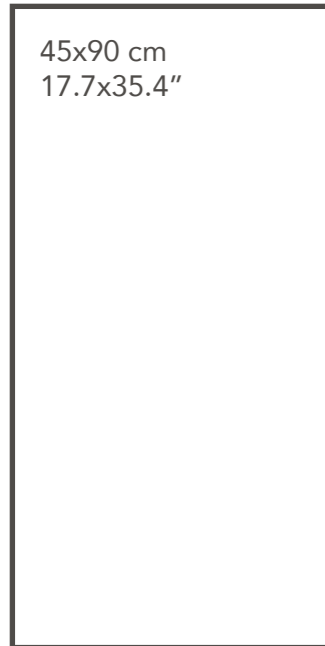


BLACK  
**GD49121**  
45X90 CM  
17.7X35.4"

GREY  
**GD49119**  
Natural  
45x90 / 17.7x35.4"

# BASALT

## SIZE / FINISH



Natural



Natural



Shade Variation



## PRODUCT SPECIFICATIONS

COLOR   SIZE FINISH		45x90 cm 17.7x35.4"	Regular
GREY	Natural	GD49119	•
DARK GREY	Natural	GD49120	•
BLACK	Natural	GD49121	•

	Water Absorption (%)	Dimension (mm)		Thickness	Straightness of Sides	Central Warpage	Edge Curvature	Warpage	Rectangularity
		Length	Width						
EN14411 (ISO 13006)	≤ 0.5	± 2.0	± 2.0	± 0.5	± 1.5	± 2.0	± 2.0	± 2.0	± 2.0
45X90 CM 17.7X35.4"	≤ 0.5	± 0.6	± 0.6	± 0.5	± 0.6	+0.8~-0.4	+0.8~-0.4	± 1.0	± 0.8

	Breaking Strength Modulus of Rupture	Thermal Shock Resistance	Resistance to Chemical	Glazed Crack Resistance	Frost Resistance	Stain Resistance
45X90 CM 17.7X35.4"	S≥2200N / R≥38N/mm <sup>2</sup>	Resistant	Minimum GLA	Resistant	Resistant	Minimum class 4

PACKING LIST	Pcs Per M <sup>2</sup>	Pcs Per Box	Weight Per Box	Boxes Per PLT
45X90 CM 17.7X35.4"	2.47	2	18.5	60



**BASALTINA**

WHITE / BLACK  
GD6365 / GD6368  
Natural  
30x60 / 11.8x23.6"

WHITE / BLACK  
GD6365 / GD6368  
Natural  
30x60 / 11.8x23.6"



# BASALTINA

## COLOR



WHITE  
**GD6365**  
30X60 CM  
11.8X23.6"



SAND  
**GD6367**  
30X60 CM  
11.8X23.6"



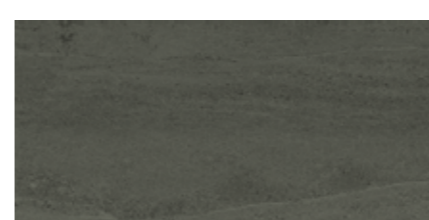
LIGHT GREY  
**GD6360**  
30X60 CM  
11.8X23.6"



DARK GREY  
**GD6363**  
30X60 CM  
11.8X23.6"



GREY  
**GD6366**  
30X60 CM  
11.8X23.6"

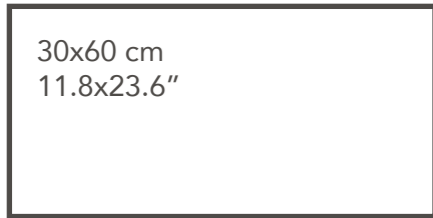


BLACK  
**GD6368**  
30X60 CM  
11.8X23.6"



IVORY  
**GD6361**  
30X60 CM  
11.8X23.6"

## SIZE / FINISH



Natural



Natural



Shade Variation



## PRODUCT SPECIFICATIONS

COLOR   SIZE FINISH		30x60 cm 11.8x23.6"	Regular
WHITE	Natural	GD6365	•
LIGHT GREY	Natural	GD6360	•
GREY	Natural	GD6366	•
IVORY	Natural	GD6361	•
SAND	Natural	GD6367	•
DARK GREY	Natural	GD6363	•
BLACK	Natural	GD6368	•

	Water Absorption (%)	Dimension (mm)		Thickness	Straightness of Sides	Central Warpage	Edge Curvature	Warpage	Rectangularity
		Length	Width						
EN14411 (ISO 13006)	≤ 0.5	± 2.0	± 1.8	± 0.5	± 1.5	± 2.0	± 2.0	± 2.0	± 2.0
30X60 CM 11.8X23.6"	≤ 0.5	± 0.4	± 0.4	± 0.4	± 0.4	+0.8~-0.4	+0.8~-0.4	± 1.0	± 0.6

	Breaking Strength Modulus of Rupture	Thermal Shock Resistance	Resistance to Chemical	Glazed Crack Resistance	Frost Resistance	Stain Resistance
	EN14411 (ISO 13006)	S≥1300N / R≥35N/mm <sup>2</sup>	Test method available	Minimum GB	Resistant	Resistant
30X60 CM 11.8X23.6"	S≥2200N / R≥38N/mm <sup>2</sup>	Resistant	Minimum GLA	Resistant	Resistant	Minimum class 4

PACKING LIST	Pcs Per M <sup>2</sup>	Pcs Per Box	Weight Per Box	Boxes Per PLT
30X60 CM 11.8X23.6"	5.56	8	31.84	48



## DIANO REALE

IVORY  
GD61208  
Natural  
60x120 / 23.6x47.2"





IVORY  
GD61208  
Natural  
60x120 / 23.6x47.2"

## COLOR



IVORY  
**GD61208**  
60X120 CM  
23.6X47.2"



GREY  
**GD61212**  
60X120 CM  
23.6X47.2"

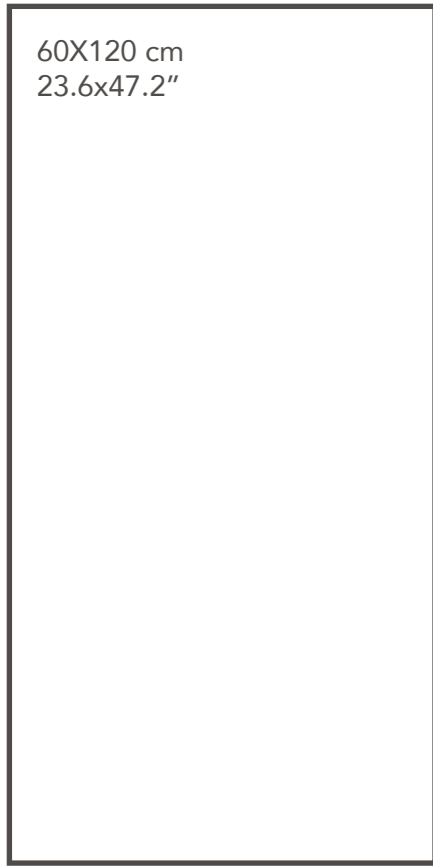


GOLD  
**GD61209**  
60X120 CM  
23.6X47.2"



SILVER  
**GD61211**  
60X120 CM  
23.6X47.2"

## SIZE / FINISH



60X120 cm  
23.6x47.2"

Natural



Natural



Shade Variation



## PRODUCT SPECIFICATIONS

COLOR   SIZE FINISH		60x120 cm 23.6x47.2"	Regular
IVORY	Natural	GD61208	•
GOLD	Natural	GD61209	•
SILVER	Natural	GD61211	•
GREY	Natural	GD61212	•

	Water Absorption (%)	Dimension (mm)		Thickness	Straightness of Sides	Central Warpage	Edge Curvature	Warpage	Rectangularity
		Length	Width						
EN14411 (ISO 13006)	≤ 0.5	± 2.0	± 2.0	± 0.5	± 1.5	± 2.0	± 2.0	± 2.0	± 2.0
60X120 CM 23.6X47.2"	≤ 0.5	± 0.5	± 0.5	± 0.5	± 0.5	+0.8~-0.4	+0.8~-0.4	± 1.0	± 0.6

	Breaking Strength Modulus of Rupture	Thermal Shock Resistance	Resistance to Chemical	Glazed Crack Resistance	Frost Resistance	Stain Resistance
60X120 CM 23.6X47.2"	S≥2200N / R≥38N/mm <sup>2</sup>	Resistant	Minimum GLA	Resistant	Resistant	Minimum class 4

PACKING LIST	Pcs Per M <sup>2</sup>	Pcs Per Box	Weight Per Box	Boxes Per PLT
60X120 CM 23.6X47.2"	1.39	2	36.09	48



**EROS**

BLACK / GREY  
HD6F118 / HD6F119  
Natural  
60x60 / 23.6x23.6"



BLACK  
HD6F118  
Natural  
60x60 / 23.6x23.6"



# EROS

## COLOR



BEIGE  
**HD6F120**  
60X60 CM  
23.6X23.6"



GREY  
**HD6F119**  
60X60 CM  
23.6X23.6"



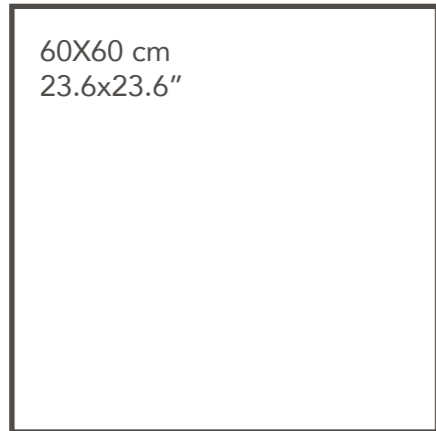
BLACK  
**HD6F118**  
60X60 CM  
23.6X23.6"



720° VR

GREY  
**HD6F119**  
Natural  
60x60 / 23.6x23.6"

## SIZE / FINISH



Bush Hammered



Natural



Bush Hammered



Natural



Shade Variation



## PRODUCT SPECIFICATIONS

COLOR   SIZE FINISH	60x60 cm 23.6x23.6"	Regular
BEIGE	Bush Hammered	HD6F120G •
	Natural	HD6F120 •
GREY	Bush Hammered	HD6F119G •
	Natural	HD6F119 •
BLACK	Bush Hammered	HD6F118G •
	Natural	HD6F118 •

	Water Absorption (%)	Dimension (mm)		Thickness	Straightness of Sides	Central Warpage	Edge Curvature	Warpage	Rectangularity
		Length	Width						
EN14411 (ISO 13006)	≤ 0.5	± 2.0	± 2.0	± 0.5	± 1.5	± 2.0	± 2.0	± 2.0	± 2.0
60X60 CM 23.6X23.6"	≤ 0.5	± 0.4	± 0.4	± 0.4	± 0.4	+0.8~-0.4	+0.8~-0.4	± 1.0	± 0.6

	Breaking Strength Modulus of Rupture	Thermal Shock Resistance	Resistance to Chemical	Glazed Crack Resistance	Frost Resistance	Stain Resistance
EN14411 (ISO 13006)	S≥1300N / R≥35N/mm <sup>2</sup>	Test method available	Minimum GB	Resistant	Resistant	Minimum class 3
60X60 CM 23.6X23.6"	S≥2200N / R≥38N/mm <sup>2</sup>	Resistant	Minimum GLA	Resistant	Resistant	Minimum class 4

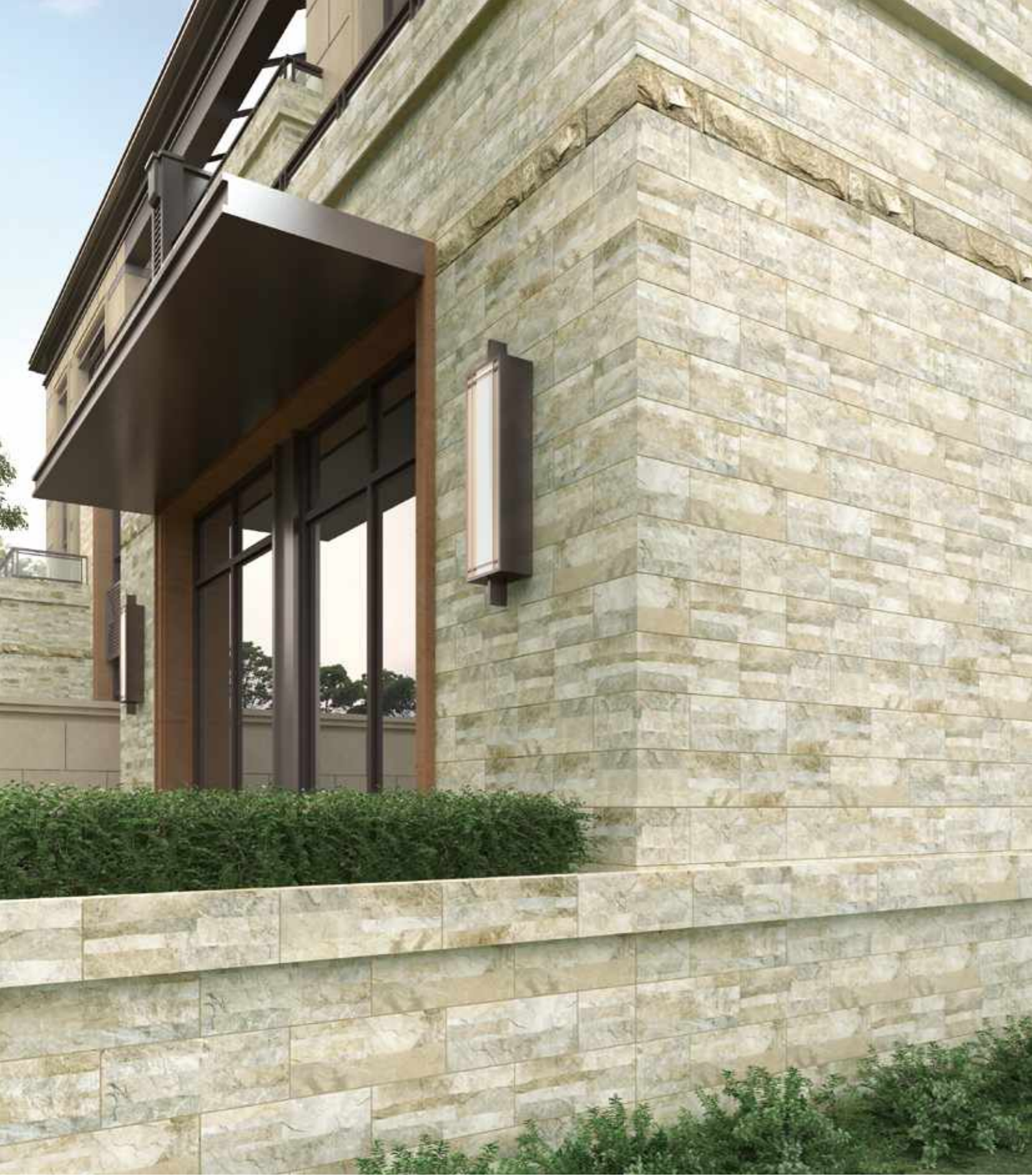
PACKING LIST	Pcs Per M <sup>2</sup>	Pcs Per Box	Weight Per Box	Boxes Per PLT
60X60 CM 23.6X23.6"	2.78	4	32	64

## FOLIATION

SILVER  
G8501  
Grip  
18x45 / 7.1x17.7"







## FOLIATION

### COLOR



SILVER  
**G8501**  
18X45 CM  
7.1X17.7"



BEIGE  
**G8503**  
18X45 CM  
7.1X17.7"



TAN  
**G8505**  
18X45 CM  
7.1X17.7"



GREY  
**G8502**  
18X45 CM  
7.1X17.7"

SILVER  
**G8501**  
Grip  
18x45 / 7.1x17.7"

# FOLIATION

## SIZE / FINISH

18X45 cm  
7.1x17.7"

Grip

**GR**

Grip

**R12**  
**P5**

Shade Variation

**V3**  
HIGH

## PRODUCT SPECIFICATIONS

COLOR   SIZE FINISH		18x45 cm 7.1x17.7"	Regular
SILVER	Grip	G8501	•
BEIGE	Grip	G8503	•
TAN	Grip	G8505	•
GREY	Grip	G8502	•

	Water Absorption (%)	Dimension (mm)		Thickness	Straightness of Sides	Central Warpage	Edge Curvature	Warpage	Rectangularity
		Length	Width						
EN14411 (ISO 13006)	≤ 0.5	± 2.0	± 0.9	± 0.5	± 1.5	± 2.0	± 2.0	± 2.0	± 2.0
18X45 CM 7.1X17.7"	≤ 0.5	± 1.4	± 0.8	± 0.5	± 1.0	+0.8~-0.4	+0.8~-0.4	± 1.0	± 1.0

	Breaking Strength Modulus of Rupture	Thermal Shock Resistance	Resistance to Chemical	Glazed Crack Resistance	Frost Resistance	Stain Resistance
18X45 CM 7.1X17.7"	S≥2200N / R≥38N/mm <sup>2</sup>	Resistant	Minimum GLA	Resistant	Resistant	Minimum class 4

PACKING LIST	Pcs Per M <sup>2</sup>	Pcs Per Box	Weight Per Box	Boxes Per PLT
18X45 CM 7.1X17.7"	12.35	10	16.9	100



## FONTANA ROSA

MILK  
HD6F10  
Natural  
60x60 / 23.6x23.6"

TAUPE  
HD12F12  
Natural  
60x120 / 23.6x47.2"



BEIGE  
HD12F11  
Natural  
60x120 / 23.6x47.2"



## COLOR



MILK  
**HD12F10**  
60X120 CM  
23.6X47.2"



720° VR



BEIGE  
**HD12F11**  
60X120 CM  
23.6X47.2"



TAUPE  
**HD12F12**  
60X120 CM  
23.6X47.2"

## DECOR



CHEVRON MILK  
**HD12F10T**  
60X120 CM  
23.6X47.2"

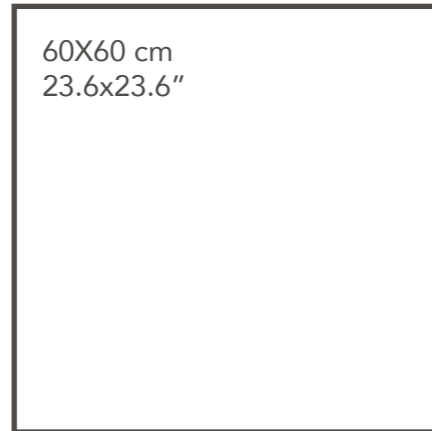
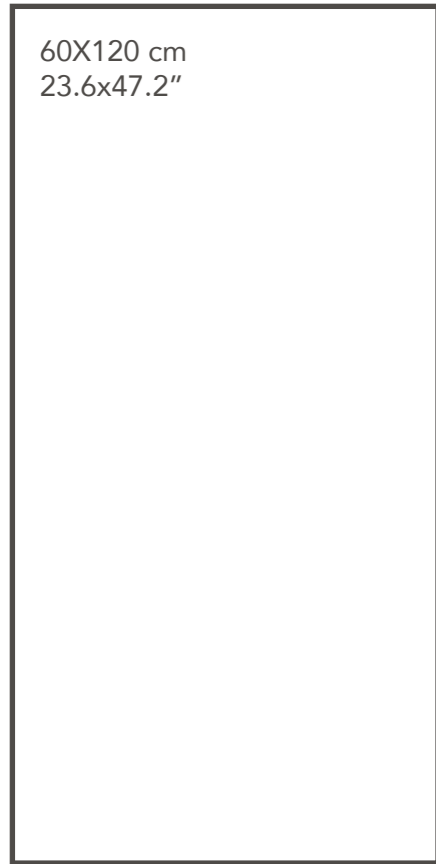


CHEVRON BEIGE  
**HD12F11T**  
60X120 CM  
23.6X47.2"



CHEVRON TAUPE  
**HD12F12T**  
60X120 CM  
23.6X47.2"

## SIZE / FINISH



Grip



Natural



Grip



Natural



Shade Variation



## PRODUCT SPECIFICATIONS

COLOR   SIZE FINISH	30x60 cm 11.8x23.6"	Regular	60x60 cm 23.6x23.6"	Regular	60x120 cm 23.6x47.2"	Regular
MILK	Grip	-	-	HD6F10G	•	-
	Natural	HD3F10	•	HD6F10	•	HD12F10
BEIGE	Grip	-	-	HD6F11G	•	-
	Natural	HD3F11	•	HD6F11	•	HD12F11
TAUPE	Grip	-	-	HD6F12G	•	-
	Natural	HD3F12	•	HD6F12	•	HD12F12
CHEVRON MILK	Natural	-	-	-	-	HD12F10T
CHEVRON BEIGE	Natural	-	-	-	-	HD12F11T
CHEVRON TAUPE	Natural	-	-	-	-	HD12F12T

	Water Absorption (%)	Dimension (mm)		Thickness	Straightness of Sides	Central Warpage	Edge Curvature	Warpage	Rectangularity
		Length	Width						
EN14411 (ISO 13006)	≤ 0.5	± 2.0	± 2.0	± 0.5	± 1.5	± 2.0	± 2.0	± 2.0	± 2.0
30X60 CM 11.8X23.6"	≤ 0.5	± 0.4	± 0.4	± 0.4	± 0.4	+0.8~-0.4	+0.8~-0.4	± 1.0	± 0.6
60X60 CM 23.6X23.6"	≤ 0.5	± 0.4	± 0.4	± 0.4	± 0.4	+0.8~-0.4	+0.8~-0.4	± 1.0	± 0.6
60X120 CM 23.6X47.2"	≤ 0.5	± 0.5	± 0.5	± 0.5	± 0.5	+0.8~-0.4	+0.8~-0.4	± 1.0	± 0.6

	Breaking Strength Modulus of Rupture	Thermal Shock Resistance	Resistance to Chemical	Glazed Crack Resistance	Frost Resistance	Stain Resistance
EN14411 (ISO 13006)	S≥1300N / R≥35N/mm <sup>2</sup>	Test method available	Minimum GB	Resistant	Resistant	Minimum class 3
30X60 CM 11.8X23.6"	S≥2200N / R≥38N/mm <sup>2</sup>	Resistant	Minimum GLA	Resistant	Resistant	Minimum class 4
60X60 CM 23.6X23.6"	S≥2200N / R≥38N/mm <sup>2</sup>	Resistant	Minimum GLA	Resistant	Resistant	Minimum class 4
60X120 CM 23.6X47.2"	S≥2200N / R≥38N/mm <sup>2</sup>	Resistant	Minimum GLA	Resistant	Resistant	Minimum class 4

PACKING LIST	Pcs Per M <sup>2</sup>	Pcs Per Box	Weight Per Box	Boxes Per PLT
30X60 CM 11.8X23.6"	5.56	8	31.84	48
60X60 CM 23.6X23.6"	2.78	4	32	64
60X120 CM 23.6X47.2"	1.39	2	36.09	48

## GRANULES-FINE

SILVER  
Y6J01  
Structured  
6x22.7 / 2.4x8.9"







## GRANULES-FINE

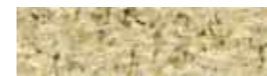
### COLOR



SILVER  
**Y6J01**  
6X22.7CM  
2.4X8.9"



ASH  
**Y6J06**  
6X22.7CM  
2.4X8.9"



GOLD  
**Y6J07**  
6X22.7CM  
2.4X8.9"



SAND  
**Y6J05**  
6X22.7CM  
2.4X8.9"



GREY  
**Y6J03**  
6X22.7CM  
2.4X8.9"



RIVER  
**Y6J10**  
6X22.7CM  
2.4X8.9"

ASH  
**Y6J06**  
Structured  
6x22.7 / 2.4x8.9"

# GRANULES-FINE

## SIZE / FINISH



6X22.7 cm  
2.4x8.9"

Structured



## PRODUCT SPECIFICATIONS

COLOR   SIZE FINISH		6x22.7 cm 2.4x8.9"	Regular
SILVER	Structured	Y6J01	•
ASH	Structured	Y6J06	•
GOLD	Structured	Y6J07	•
SAND	Structured	Y6J05	•
GREY	Structured	Y6J03	•
RIVER	Structured	Y6J10	•

	Water Absorption (%)	Dimension (mm)		Thickness	Straightness of Sides	Central Warpage	Edge Curvature	Warpage	Rectangularity
		Length	Width						
EN14411 (ISO 13006)	+3.0~+6.0	± 1.4	± 0.9	± 0.4	± 1.1	± 1.1	± 1.1	± 1.1	± 1.1
6X22.7 CM <b>2.4X8.9"</b>	≤ 5.0	± 1.2	± 0.8	± 0.4	± 0.6	+0.8~-0.4	+0.8~-0.4	± 0.8	± 0.8

	Breaking Strength Modulus of Rupture	Thermal Shock Resistance	Resistance to Chemical	Glazed Crack Resistance	Frost Resistance	Stain Resistance
	EN14411 (ISO 13006)	S≥1000N / R≥22N/mm <sup>2</sup>	Test method available	Minimum GB	Resistant	Resistant
6X22.7 CM <b>2.4X8.9"</b>	S≥1000N / R≥22N/mm <sup>2</sup>	Resistant	Minimum GLA	Resistant	Resistant	Minimum class 4

PACKING LIST	Pcs Per M <sup>2</sup>	Pcs Per Box	Weight Per Box	Boxes Per PLT
6X22.7 CM <b>2.4X8.9"</b>	73.42	80	16.5	117

## JUNO GRANITE

WHITE

**GH61201**

Grip

60x120x2 / 23.6x47.2x0.8"





BLACK  
GH61205  
Grip  
60x120x2 / 23.6x47.2x0.8"

# JUNO GRANITE

## COLOR



WHITE  
**GH61201**  
60X120X2CM  
23.6X47.2X0.8"



BLACK  
**GH61205**  
60X120X2CM  
23.6X47.2X0.8"



GREY  
**GH61202**  
60X120X2CM  
23.6X47.2X0.8"



DARK BLACK  
**GH61206**  
60X120X2CM  
23.6X47.2X0.8"



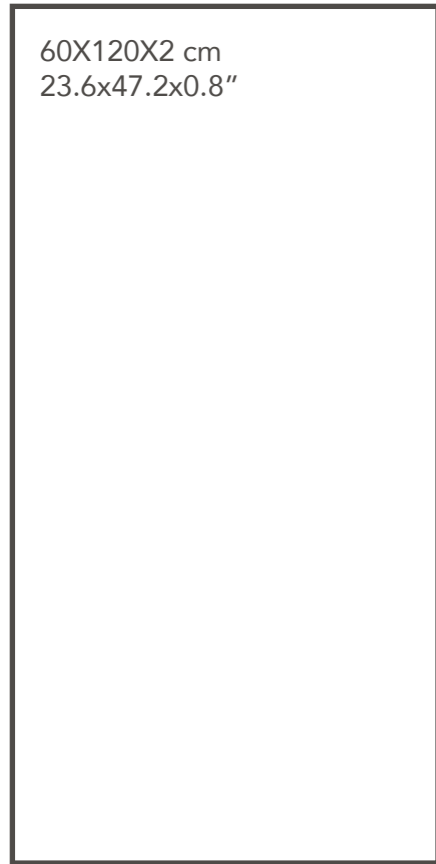
SAGE  
**GH61203**  
60X120X2CM  
23.6X47.2X0.8"



720° VR

# JUNO GRANITE

## SIZE / FINISH



60X120X2 cm  
23.6x47.2x0.8"

Grip



Grip



Shade Variation



## PRODUCT SPECIFICATIONS

COLOR   SIZE FINISH		60x120x2 cm 23.6x47.2x0.8"	Regular
WHITE	Grip	GH61201	•
GREY	Grip	GH61202	•
SAGE	Grip	GH61203	•
BLACK	Grip	GH61205	•
DARK BLACK	Grip	GH61206	•

2.0 Outdoor	Over 1000kg (2200lb)	Skid Resistance R11	Stain Resistance Class 5	Chemical Resistance Class A	Thermal Shock Resistance -110 C ~ +110 C
V	V	V	V	V	V

	Water Absorption (%)	Dimension (mm) Length	Width	Thickness	Straightness of Sides	Central Warpage	Edge Curvature	Warpage	Rectangularity
EN14411 (ISO 13006)	≤ 0.5	± 2.0	± 2.0	± 0.5	± 1.5	± 2.0	± 2.0	± 2.0	± 2.0
60X120X2 CM 23.6X47.2X0.8"	≤ 0.5	± 0.8	± 0.8	± 0.5	± 0.8	+0.8~-0.4	+0.8~-0.4	± 1.2	± 0.8

	Breaking Strength Modulus of Rupture	Thermal Shock Resistance	Resistance to Chemical	Glazed Crack Resistance	Frost Resistance	Stain Resistance
EN14411 (ISO 13006)	S≥1300N / R≥35N/mm <sup>2</sup>	Test method available	Minimum GB	Resistant	Resistant	Minimum class 3
60X120X2 CM 23.6X47.2X0.8"	S≥10000N / R≥38N/mm <sup>2</sup>	Resistant	Minimum GLA	Resistant	Resistant	Minimum class 4

PACKING LIST	Pcs Per M <sup>2</sup>	Pcs Per Box	Weight Per Box	Boxes Per PLT
60X120X2 CM 23.6X47.2X0.8"	1.39	1	33	48

## LAVAGRIGIA

GREY  
HD6F07  
Natural  
60x60 / 23.6x23.6"





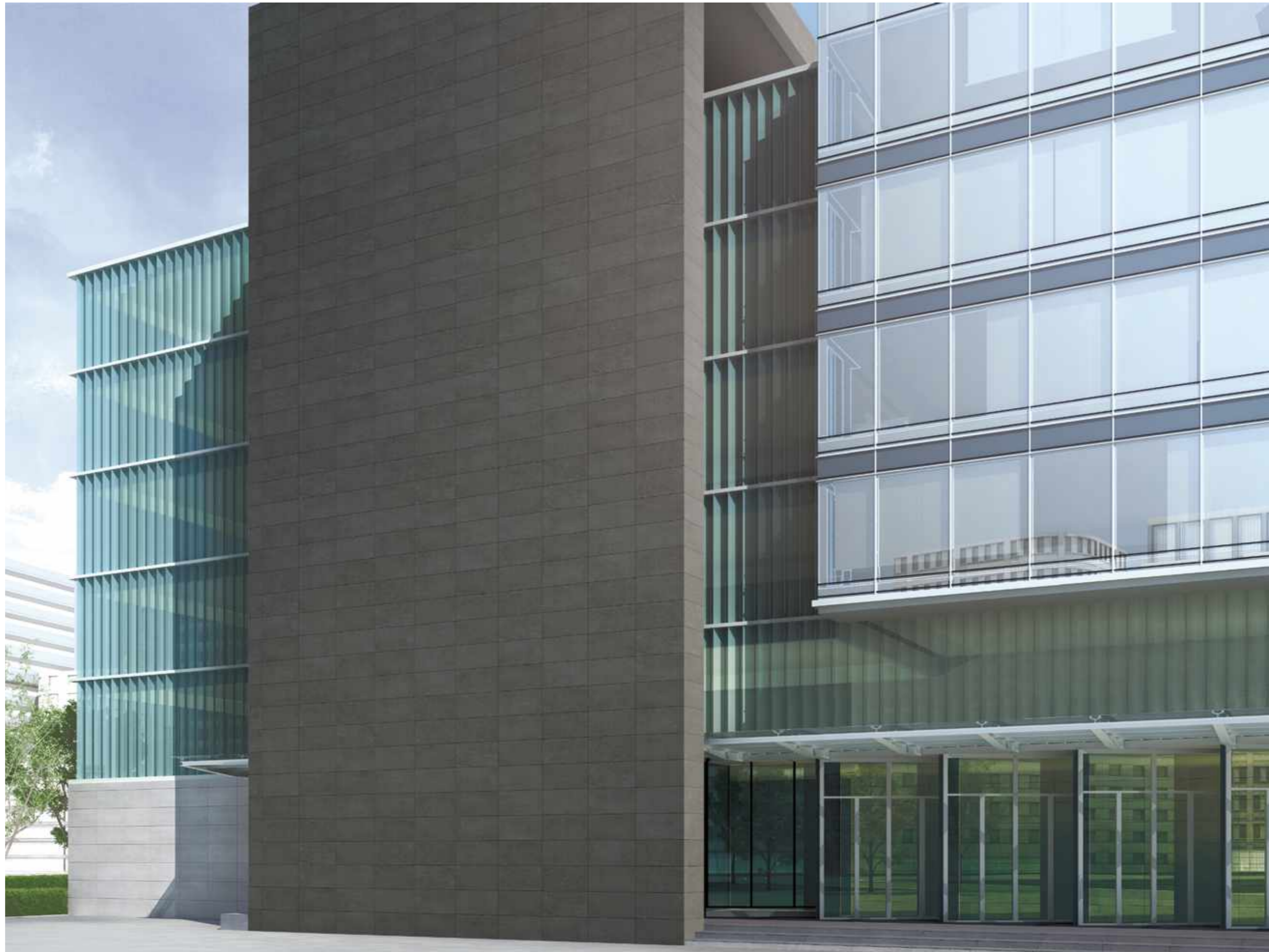
LIGHT GREY  
**HD12F06**  
Natural  
60x120 / 23.6x47.2"





ANTRACITE  
HD12F08  
Natural  
60x120 / 23.6x47.2"

ANTHRACITE  
HT12F08  
Grip  
60x120x2 / 23.6x47.2x0.8"



LIGHT GREY  
HD6F06 / HD6F06TA  
Natural / Grip  
60x60 / 23.6x23.6"

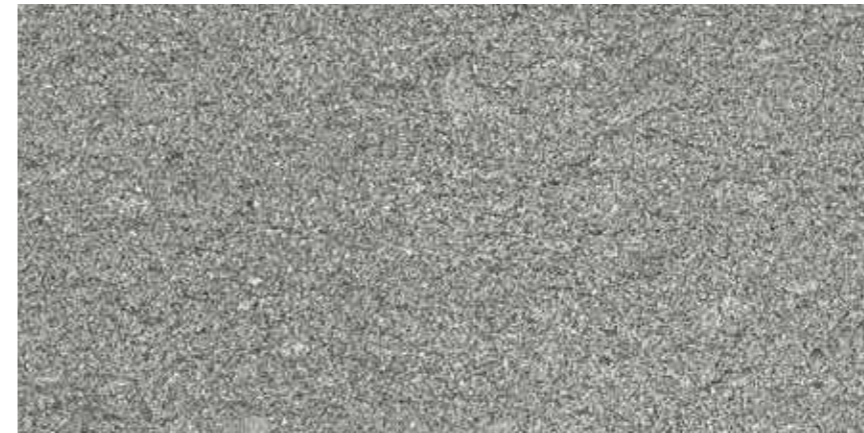


# LAVAGRIGIA

## COLOR



LIGHT GREY  
**HD12F06**  
60X120  
23.6X47.2"



GREY  
**HD12F07**  
60X120  
23.6X47.2"



ANTHRACITE  
**HD12F08**  
60X120  
23.6X47.2"

LIGHT GREY  
**HD6F06 / HD6F06TA**  
Natural / Grip  
60x60 / 23.6x23.6"

## DECOR



SPLINE LIGHT GREY  
**HD12F06T**  
60X120CM  
23.6X47.2"



SPLINE GREY  
**HD12F07T**  
60X120CM  
23.6X47.2"

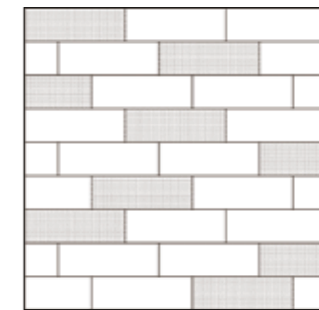


SPLINE ANTHRACITE  
**HD12F08T**  
60X120CM  
23.6X47.2"

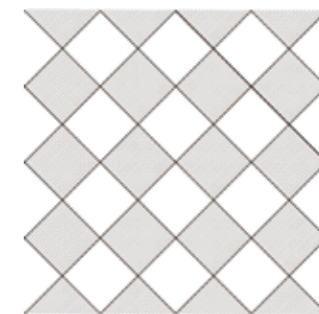


**HD6F06TA**  
60X60CM  
23.6X23.6"

## LAYING SUGGESTIONS



20X60CM  
7.9X23.6"



30X30CM  
11.8X11.8"

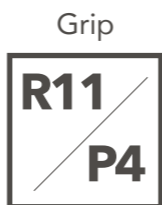
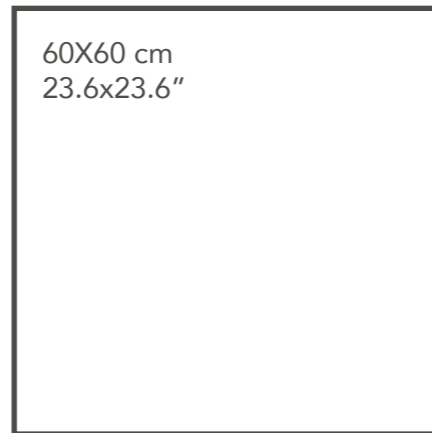
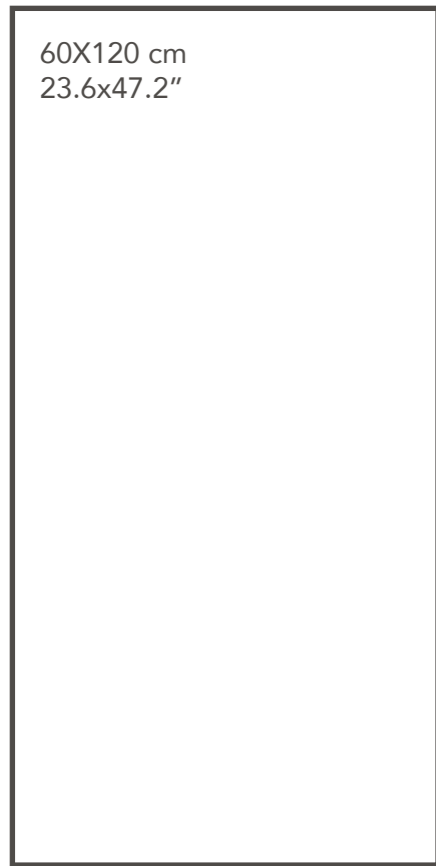


720° VR



720° VR

## SIZE / FINISH



## PRODUCT SPECIFICATIONS

COLOR   SIZE FINISH		60x60 cm 23.6x23.6"	Regular	60x120 cm 23.6x47.2"	Regular	60x120x2 cm 23.6x47.2x0.8"	Regular
LIGHT GREY	Grip	HD6F06G	•	-	-	HT12F06	•
	Natural	HD6F06	•	HD12F06	•	-	-
GREY	Grip	HD6F07G	•	-	-	HT12F07	•
	Natural	HD6F07	•	HD12F07	•	-	-
ANTHRACITE	Grip	HD6F08G	•	-	-	HT12F08	•
	Natural	HD6F08	•	HD12F08	•	-	-
SPLINE LIGHT GREY	Natural	-	-	HD12F06T	•	-	-
SPLINE GREY	Natural	-	-	HD12F07T	•	-	-
SPLINE ANTHRACITE	Natural	-	-	HD12F08T	•	-	-
DECOR	Grip	HD6F06TA	-	-	-	-	-

	Water Absorption (%)	Dimension (mm)		Thickness	Straightness of Sides	Central Warpage	Edge Curvature	Warpage	Rectangularity
		Length	Width						
EN14411 (ISO 13006)	≤ 0.5	± 2.0	± 2.0	± 0.5	± 1.5	± 2.0	± 2.0	± 2.0	± 2.0
60X60 CM 23.6X23.6"	≤ 0.5	± 0.4	± 0.4	± 0.4	± 0.4	+0.8~-0.4	+0.8~-0.4	± 1.0	± 0.6
60X120 CM 23.6X47.2"	≤ 0.5	± 0.5	± 0.5	± 0.5	± 0.5	+0.8~-0.4	+0.8~-0.4	± 1.0	± 0.6
60X120X2 CM 23.6X47.2X0.8"	≤ 0.5	± 0.8	± 0.8	± 0.5	± 0.8	+0.8~-0.4	+0.8~-0.4	± 1.2	± 0.8

	Breaking Strength Modulus of Rupture	Thermal Shock Resistance	Resistance to Chemical	Glazed Crack Resistance	Frost Resistance	Stain Resistance
60X60 CM 23.6X23.6"	S≥2200N / R≥38N/mm <sup>2</sup>	Resistant	Minimum GLA	Resistant	Resistant	Minimum class 4
60X120 CM 23.6X47.2"	S≥2200N / R≥38N/mm <sup>2</sup>	Resistant	Minimum GLA	Resistant	Resistant	Minimum class 4
60X120X2 CM 23.6X47.2X0.8"	S≥10000N / R≥38N/mm <sup>2</sup>	Resistant	Minimum GLA	Resistant	Resistant	Minimum class 4

PACKING LIST	Pcs Per M <sup>2</sup>	Pcs Per Box	Weight Per Box	Boxes Per PLT
60X60 CM 23.6X23.6"	2.78	4	32	64
60X120 CM 23.6X47.2"	1.39	2	36.09	48
60X120X2 CM 23.6X47.2X0.8"	1.39	1	33	48



## LIME STONE

DARK GREY  
HD3F83  
Natural  
30X60 / 11.8X23.6"



BEIGE  
HD3F82  
Natural  
30X60 / 11.8X23.6"



# LIME STONE

## COLOR



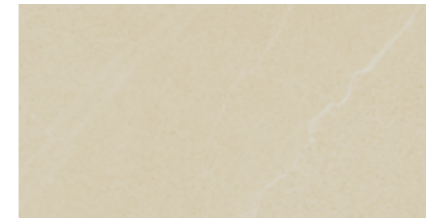
IVORY  
**HD12F80**  
60X120CM  
23.6X47.2"



ANTHRACITE  
**HD12F85**  
60X120CM  
23.6X47.2"



BEIGE  
**HD12F82**  
60X120CM  
23.6X47.2"



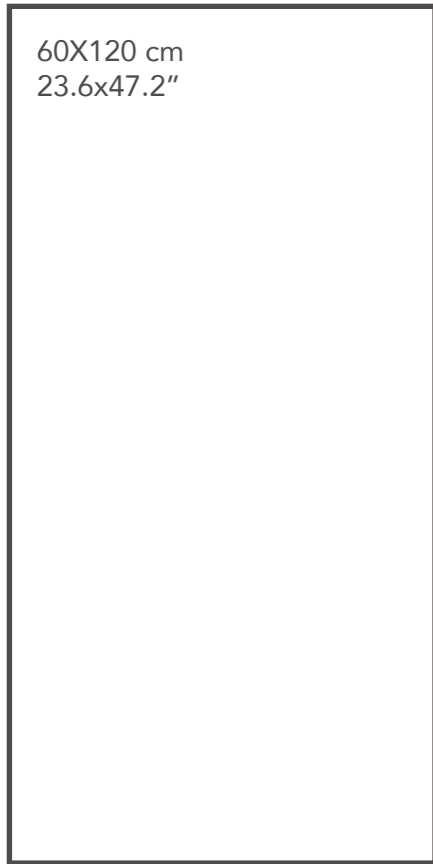
SAND  
**HD3F81**  
30X60CM  
11.8X23.6"



DARK GREY  
**HD12F83**  
60X120CM  
23.6X47.2"

# LIME STONE

## SIZE / FINISH



Natural



Natural



Shade Variation



## PRODUCT SPECIFICATIONS

COLOR   SIZE FINISH		30x60 cm 11.8x23.6"	Regular	60x120 cm 23.6x47.2"	Regular
IVORY	Natural	HD3F80	•	HD12F80	•
BEIGE	Natural	HD3F82	•	HD12F82	•
DARK GREY	Natural	HD3F83	•	HD12F83	•
ANTHRACITE	Natural	HD3F85	•	HD12F85	•
SAND	Natural	HD3F81	•	-	-

	Water Absorption (%)	Dimension (mm)		Thickness	Straightness of Sides	Central Warpage	Edge Curvature	Warpage	Rectangularity
		Length	Width						
EN14411 (ISO 13006)	≤ 0.5	± 2.0	± 1.8	± 0.5	± 1.5	± 2.0	± 2.0	± 2.0	± 2.0
30X60 CM 11.8X23.6"	≤ 0.5	± 0.4	± 0.4	± 0.4	± 0.4	+0.8~-0.4	-0.8~-0.4	± 1.0	± 0.6
60X120 CM 23.6X47.2"	≤ 0.5	± 0.5	± 0.5	± 0.5	± 0.5	+0.8~-0.4	-0.8~-0.4	± 1.0	± 0.6

	Breaking Strength Modulus of Rupture	Thermal Shock Resistance	Resistance to Chemical	Glazed Crack Resistance	Frost Resistance	Stain Resistance
EN14411 (ISO 13006)	S≥1300N / R≥35N/mm <sup>2</sup>	Test method available	Minimum GB	Resistant	Resistant	Minimum class 3
30X60 CM 11.8X23.6"	S≥2200N / R≥38N/mm <sup>2</sup>	Resistant	Minimum GLA	Resistant	Resistant	Minimum class 4
60X120 CM 23.6X47.2"	S≥2200N / R≥38N/mm <sup>2</sup>	Resistant	Minimum GLA	Resistant	Resistant	Minimum class 4

PACKING LIST	Pcs Per M <sup>2</sup>	Pcs Per Box	Weight Per Box	Boxes Per PLT
30X60 CM 11.8X23.6"	5.56	8	31.84	60
60X120 CM 23.6X47.2"	1.39	2	36.09	48



## LIPICA

IVORY  
HD6F104  
Natural  
60X60 / 23.6X23.6"

SAND  
HD6F105  
Natural  
60X60 / 23.6X23.6"





IVORY  
HD6F104 / HD6F104G  
Natural / Bush Hammered  
60X60 / 23.6X23.6"

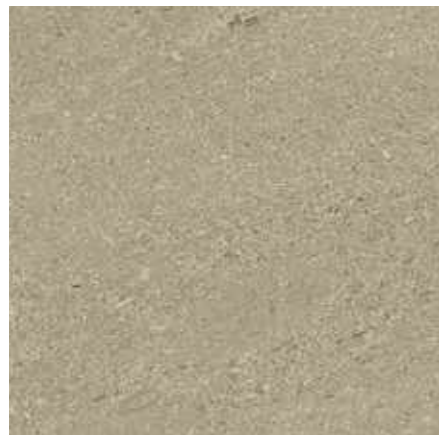
## COLOR



IVORY  
**HD6F104**  
60X60CM  
23.6X23.6"



SAND  
**HD6F105**  
60X60CM  
23.6X23.6"

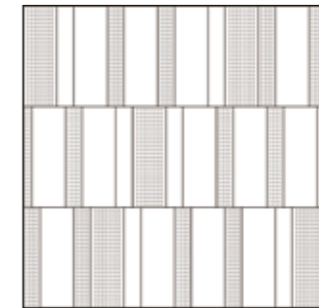


GOLD  
**HD6F106**  
60X60CM  
23.6X23.6"



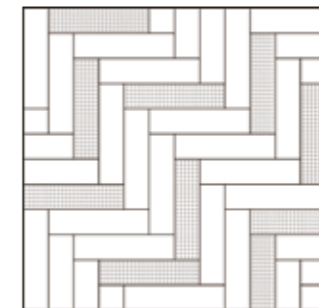
TAUPE  
**HD6F107**  
60X60CM  
23.6X23.6"

## LAYING SUGGESTIONS

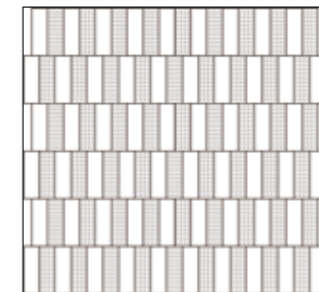


10X60CM  
3.9X23.6"

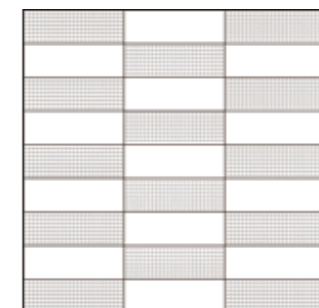
20X60CM  
7.9X23.6"



15X60CM  
5.9X23.6"

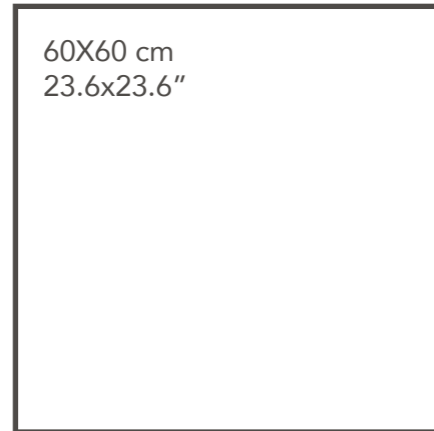
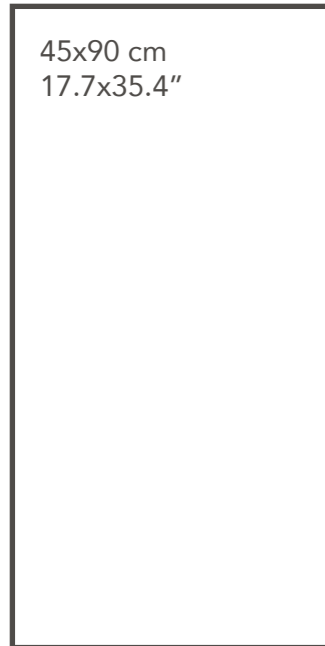


10X30CM  
3.9X11.8"



20X60CM  
7.9X23.6"

## SIZE / FINISH



Bush Hammered



Natural



Bush Hammered



Natural



Shade Variation



## PRODUCT SPECIFICATIONS

COLOR   SIZE FINISH	45x90 cm 17.7x35.4"	Regular	60x60 cm 23.6x23.6"	Regular
IVORY	Bush Hammered	-	HD6F104G	•
	Natural	H49F104	HD6F104	•
SAND	Bush Hammered	-	HD6F105G	•
	Natural	H49F105	HD6F105	•
GOLD	Bush Hammered	-	HD6F106G	•
	Natural	H49F106	HD6F106	•
TAUPE	Bush Hammered	-	HD6F107G	•
	Natural	H49F107	HD6F107	•

	Water Absorption (%)	Dimension (mm)		Thickness	Straightness of Sides	Central Warpage	Edge Curvature	Warpage	Rectangularity
		Length	Width						
EN14411 (ISO 13006)	≤ 0.5	± 2.0	± 2.0	± 0.5	± 1.5	± 2.0	± 2.0	± 2.0	± 2.0
45X90 CM 17.7X35.4"	≤ 0.5	± 0.6	± 0.6	± 0.5	± 0.6	+0.8~-0.4	+0.8~-0.4	± 1.0	± 0.8
60X60 CM 23.6X23.6"	≤ 0.5	± 0.4	± 0.4	± 0.4	± 0.4	+0.8~-0.4	+0.8~-0.4	± 1.0	± 0.6

	Breaking Strength Modulus of Rupture	Thermal Shock Resistance	Resistance to Chemical	Glazed Crack Resistance	Frost Resistance	Stain Resistance
45X90 CM 17.7X35.4"	S≥2200N / R≥38N/mm <sup>2</sup>	Resistant	Minimum GLA	Resistant	Resistant	Minimum class 4
60X60 CM 23.6X23.6"	S≥2200N / R≥38N/mm <sup>2</sup>	Resistant	Minimum GLA	Resistant	Resistant	Minimum class 4

PACKING LIST	Pcs Per M <sup>2</sup>	Pcs Per Box	Weight Per Box	Boxes Per PLT
45X90 CM 17.7X35.4"	2.47	2	18.5	60
60X60 CM 23.6X23.6"	2.78	4	32	64



## MIXED STONE

DARK GREY  
HD6F116  
Natural  
60X60 / 23.6X23.6"





DARK GREY  
**HD6F116**  
Natural  
60X60 / 23.6X23.6"



6F115T / 6F115TA1 / 6F115TA2  
6F115TA3 / 6F115TA4  
Natural / Structured  
7.5X30 / 3X11.8"

# MIXED STONE

## COLOR



LIGHT GREY  
**H12F115**  
60X120CM  
23.6X47.2"



DARK GREY  
**H12F116**  
60X120CM  
23.6X47.2"



BLACK  
**H12F117**  
60X120CM  
23.6X47.2"

## DECOR



**6F115T**  
7.5X30CM  
3X11.8"



**6F115TA1**  
7.5X30CM  
3X11.8"



**6F115TA2**  
7.5X30CM  
3X11.8"

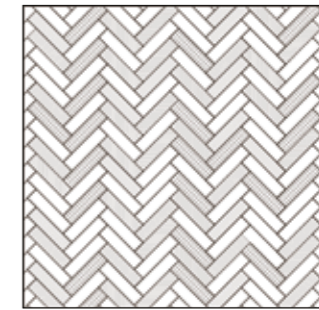


**6F115TA3**  
7.5X30CM  
3X11.8"

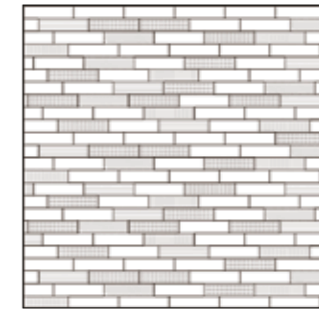


**6F115TA4**  
7.5X30CM  
3X11.8"

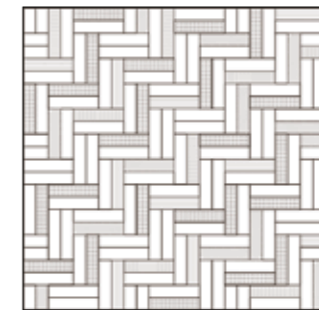
## LAYING SUGGESTIONS



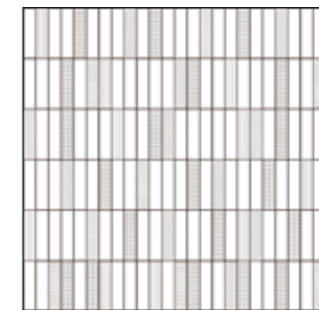
7.5X30CM  
3X11.8"



7.5X30CM  
3X11.8"



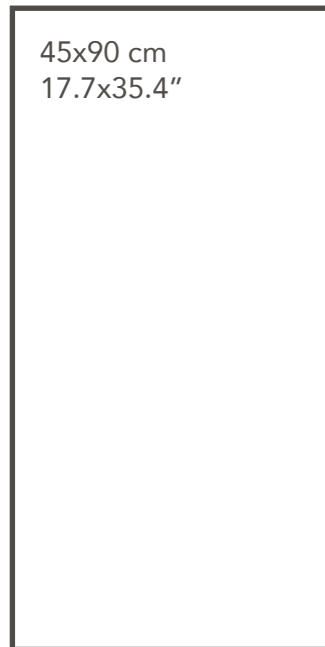
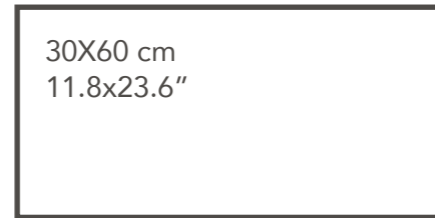
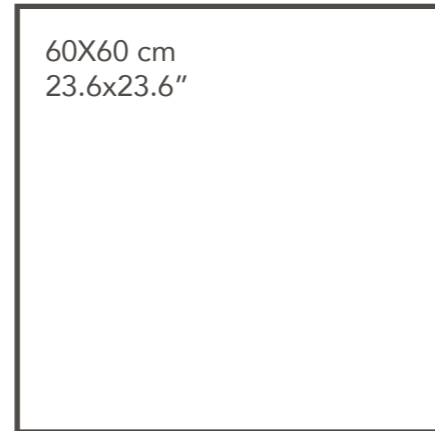
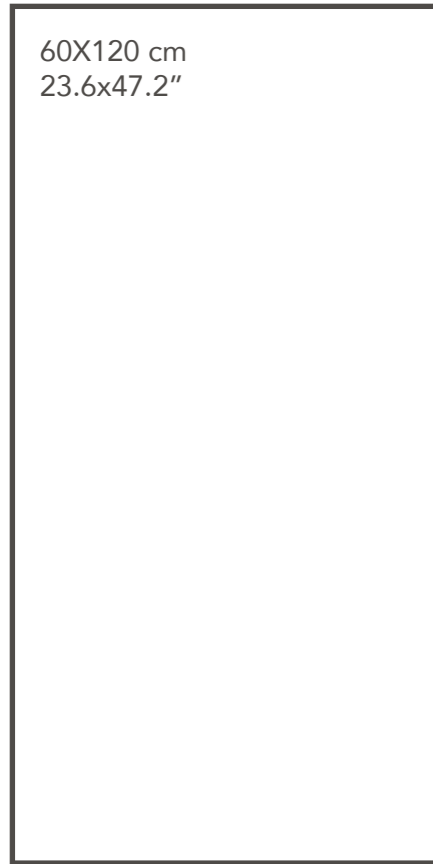
7.5X30CM  
3X11.8"



7.5X30CM  
3X11.8"

# MIXED STONE

## SIZE / FINISH



Grip



Natural



Structured



Grip



Natural



Shade Variation



## PRODUCT SPECIFICATIONS

COLOR   SIZE FINISH	7.5x30 cm 3x11.8"	30x60 cm 11.8x23.6"	45x90 cm 17.7x35.4"	Regular	60x60 cm 23.6x23.6"	Regular	60x120 cm 23.6x47.2"
LIGHT GREY	Grip	-	HD3F115R	-	HD6F115R	-	-
	Natural	-	HD3F115	H49F115	•	HD6F115	• H12F115
DARK GREY	Grip	-	HD3F116R	-	HD6F116R	-	-
	Natural	-	HD3F116	H49F116	•	HD6F116	• H12F116
BLACK	Grip	-	HD3F117R	-	HD6F117R	-	-
	Natural	-	HD3F117	H49F117	•	HD6F117	• H12F117
DECOR	Natural	6F115T	-	-	-	-	-
	Structured	6F115TA1	-	-	-	-	-
		6F115TA2	-	-	-	-	-
		6F115TA3	-	-	-	-	-
		6F115TA4	-	-	-	-	-

	Water Absorption (%)	Dimension (mm)		Thickness	Straightness of Sides	Central Warpage	Edge Curvature	Warpage	Rectangularity
		Length	Width						
EN14411 (ISO 13006)	≤ 0.5	± 2.0	± 2.0	± 0.5	± 1.5	± 2.0	± 2.0	± 2.0	± 2.0
7.5X30 CM 3X11.8"	≤ 2.0	± 1.2	± 0.8	± 0.4	± 0.8	+0.8~-0.4	+0.8~-0.4	± 0.8	± 0.8
30X60 CM 11.8X23.6"	≤ 0.5	± 0.4	± 0.4	± 0.4	± 0.4	+0.8~-0.4	+0.8~-0.4	± 1.0	± 0.6
45X90 CM 17.7X35.4"	≤ 0.5	± 0.6	± 0.6	± 0.5	± 0.6	+0.8~-0.4	+0.8~-0.4	± 1.0	± 0.8
60X60 CM 23.6X23.6"	≤ 0.5	± 0.4	± 0.4	± 0.4	± 0.4	+0.8~-0.4	+0.8~-0.4	± 1.0	± 0.6
60X120 CM 23.6X47.2"	≤ 0.5	± 0.5	± 0.5	± 0.5	± 0.5	+0.8~-0.4	+0.8~-0.4	± 1.0	± 0.6

	Breaking Strength Modulus of Rupture	Thermal Shock Resistance	Resistance to Chemical	Glazed Crack Resistance	Frost Resistance	Stain Resistance
EN14411 (ISO 13006)	S≥1300N / R≥35N/mm <sup>2</sup>	Test method available	Minimum GB	Resistant	Resistant	Minimum class 3
7.5X30 CM 3X11.8"	S≥1200N / R≥30N/mm <sup>2</sup>	Resistant	Minimum GLA	Resistant	Resistant	Minimum class 4
30X60 CM 11.8X23.6"	S≥2200N / R≥38N/mm <sup>2</sup>	Resistant	Minimum GLA	Resistant	Resistant	Minimum class 4
45X90 CM 17.7X35.4"	S≥2200N / R≥38N/mm <sup>2</sup>	Resistant	Minimum GLA	Resistant	Resistant	Minimum class 4
60X60 CM 23.6X23.6"	S≥2200N / R≥38N/mm <sup>2</sup>	Resistant	Minimum GLA	Resistant	Resistant	Minimum class 4
60X120 CM 23.6X47.2"	S≥2200N / R≥38N/mm <sup>2</sup>	Resistant	Minimum GLA	Resistant	Resistant	Minimum class 4

PACKING LIST	Pcs Per M <sup>2</sup>	Pcs Per Box	Weight Per Box	Boxes Per PLT
7.5X30 CM 3X11.8"	44.4	40	20.1	91
30X60 CM 11.8X23.6"	5.56	8	31.84	48
45X90 CM 17.7X35.4"	2.47	2	18.5	60
60X60 CM 23.6X23.6"	2.78	4	32	64
60X120 CM 23.6X47.2"	1.39	2	36.09	48

**NEUTRAL**

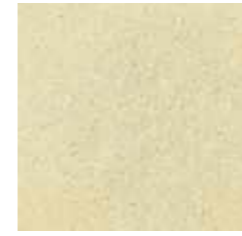
GREY  
G30922  
Grip  
30X30 / 11.8X11.8"





## NEUTRAL

### COLOR



BEIGE  
**G30920**  
30X30CM  
11.8X11.8"



MOCHA  
**G30921**  
30X30CM  
11.8X11.8"



GREY  
**G30922**  
30X30CM  
11.8X11.8"

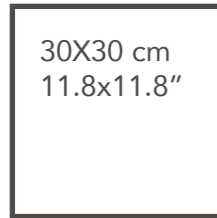


CHARCOAL  
**G30923**  
30X30CM  
11.8X11.8"

GREY  
**G30922**  
Grip  
30X30 / 11.8X11.8"

# NEUTRAL

## SIZE / FINISH



Grip



Grip



## PRODUCT SPECIFICATIONS

COLOR   SIZE FINISH		30x30 cm 11.8x11.8"	Regular
BEIGE	Grip	G30920	•
MOCHA	Grip	G30921	•
GREY	Grip	G30922	•
CHARCOAL	Grip	G30923	•

	Water Absorption (%)	Dimension (mm)		Thickness	Straightness of Sides	Central Warpage	Edge Curvature	Warpage	Rectangularity
		Length	Width						
EN14411 (ISO 13006)	≤ 0.5	± 1.8	± 1.8	± 0.4	± 1.5	± 1.5	± 1.5	± 1.5	± 1.5
30X30 CM 11.8X11.8"	≤ 0.5	± 1.2	± 1.2	± 0.4	± 1.0	+0.8~-0.4	+0.8~-0.4	± 1.0	± 1.0

	Breaking Strength Modulus of Rupture	Thermal Shock Resistance	Resistance to Chemical	Glazed Crack Resistance	Frost Resistance	Stain Resistance
	EN14411 (ISO 13006)	S≥1300N / R≥35N/mm <sup>2</sup>	Test method available	Minimum GB	Resistant	Resistant
30X30 CM 11.8X11.8"	S≥1800N / R≥38N/mm <sup>2</sup>	Resistant	Minimum GLA	Resistant	Resistant	Minimum class 4

PACKING LIST	Pcs Per M <sup>2</sup>	Pcs Per Box	Weight Per Box	Boxes Per PLT
30X30 CM 11.8X11.8"	11.11	16	25	72

## PIASENTINA

LIGHT GREY / GREY  
GD49115 / GD49118  
Natural  
45X90 / 17.7X35.4"







## PIASENTINA

### COLOR



LIGHT GREY  
**GD49115**  
45X90CM  
17.7X35.4"



GREY  
**GD49118**  
45X90CM  
17.7X35.4"



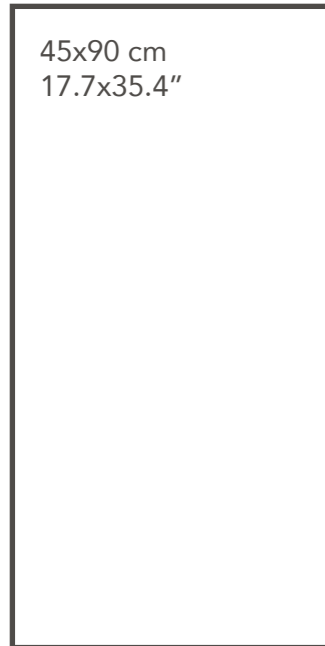
SAND  
**GD49117**  
45X90CM  
17.7X35.4"



WALNUT  
**GD49116**  
45X90CM  
17.7X35.4"

SAND  
**GD49117**  
Natural  
45X90 / 17.7X35.4"

## SIZE / FINISH



45x90 cm  
17.7x35.4"

Natural



Natural











Shade Variation



## PRODUCT SPECIFICATIONS

COLOR   SIZE FINISH		45x90 cm 17.7x35.4"	Regular
LIGHT GREY	Natural	GD49115	•
GREY	Natural	GD49118	•
SAND	Natural	GD49117	•
WALNUT	Natural	GD49116	•

	 Water Absorption (%)	 Dimension (mm)		Thickness	Straightness of Sides	Central Warpage	Edge Curvature	Warpage	Rectangularity
	Length	Width							
EN14411 (ISO 13006)	≤ 0.5	± 2.0	± 2.0	± 0.5	± 1.5	± 2.0	± 2.0	± 2.0	± 2.0
45X90 CM 17.7X35.4"	≤ 0.5	± 0.6	± 0.6	± 0.5	± 0.6	+0.8~-0.4	+0.8~-0.4	± 1.0	± 0.8

	 Breaking Strength Modulus of Rupture	 Thermal Shock Resistance	 Resistance to Chemical	 Glazed Crack Resistance	 Frost Resistance	 Stain Resistance
	EN14411 (ISO 13006)	S≥1300N / R≥35N/mm <sup>2</sup>	Test method available	Minimum GB	Resistant	Resistant
45X90 CM 17.7X35.4"	S≥2200N / R≥38N/mm <sup>2</sup>	Resistant	Minimum GLA	Resistant	Resistant	Minimum class 4

PACKING LIST	Pcs Per M <sup>2</sup>	Pcs Per Box	Weight Per Box	Boxes Per PLT
45X90 CM 17.7X35.4"	2.47	2	18.5	60



**RIB**

LINEN / CLOUD / BONE / PEWTER  
5451L / 5452L / 5453L / 5455L  
Natural  
4X25 / 1.6X9.8"



# RIB

## COLOR



LINEN  
**5451L**  
4X25 CM  
1.6X9.8"



PEWTER  
**5455L**  
4X25 CM  
1.6X9.8"



CLOUD  
**5452L**  
4X25 CM  
1.6X9.8"



CEMENT  
**5459L**  
4X25 CM  
1.6X9.8"



BONE  
**5453L**  
4X25 CM  
1.6X9.8"



CREEK  
**5457L**  
4X25 CM  
1.6X9.8"



WHEAT  
**5456L**  
4X25 CM  
1.6X9.8"



TAN  
**5458L**  
4X25 CM  
1.6X9.8"

PEWTER  
**5455L**  
Natural  
4X25 / 1.6X9.8"

SIZE / FINISH



4X25 cm  
1.6x9.8"

Natural



PRODUCT SPECIFICATIONS

COLOR   SIZE FINISH		4x25 cm 1.6x9.8"	Regular
LINEN	Natural	5451L	•
CLOUD	Natural	5452L	•
BONE	Natural	5453L	•
WHEAT	Natural	5456L	•
PEWTER	Natural	5455L	•
CEMENT	Natural	5459L	•
CREEK	Natural	5457L	•
TAN	Natural	5458L	•

	Water Absorption (%)	Dimension (mm)		Thickness	Straightness of Sides	Central Warpage	Edge Curvature	Warpage	Rectangularity
		Length	Width						
EN14411 (ISO 13006)	+0.5~+3.0	± 1.5	± 0.9	± 0.5	± 1.3	± 1.3	± 1.3	± 1.3	± 1.3
4X25 CM 1.6X9.8"	≤ 2.0	± 1.2	± 0.8	± 0.4	± 0.6	+0.8~-0.4	+0.8~-0.4	± 0.8	± 0.8

	Breaking Strength Modulus of Rupture	Thermal Shock Resistance	Resistance to Chemical	Glazed Crack Resistance	Frost Resistance	Stain Resistance
	EN14411 (ISO 13006)	S≥1100N / R≥30N/mm <sup>2</sup>	Test method available	Minimum GB	Resistant	Resistant
4X25 CM 1.6X9.8"	S≥1200N / R≥30N/mm <sup>2</sup>	Resistant	Minimum GLA	Resistant	Resistant	Minimum class 4

PACKING LIST	Pcs Per M <sup>2</sup>	Pcs Per Box	Weight Per Box	Boxes Per PLT
4X25 CM 1.6X9.8"	100	80	16.0	100

## SURFACE

SURFACE-PLATEAU  
DOVE GREY  
42707F  
Natural  
4x22.7 / 1.6x8.9"



# SURFACE

## SURFACE-PLATEAU COLOR



MOON GREY  
**42701A**  
4X22.7 CM  
1.6X8.9"



EARTH GREY  
**42706A**  
4X22.7 CM  
1.6X8.9"



HORIZON GREY  
**42702A**  
4X22.7 CM  
1.6X8.9"



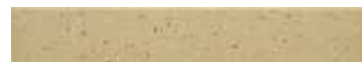
DOVE GREY  
**42707A**  
4X22.7 CM  
1.6X8.9"



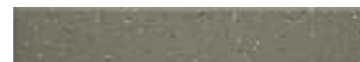
BALTIC GREY  
**42703A**  
4X22.7 CM  
1.6X8.9"



STONE GREY  
**42708A**  
4X22.7 CM  
1.6X8.9"



DESERT GREY  
**42705A**  
4X22.7 CM  
1.6X8.9"



SABRE GREY  
**42709A**  
4X22.7 CM  
1.6X8.9"

## SURFACE-RIDGE COLOR



MOON GREY  
**42701F**  
4X22.7 CM  
1.6X8.9"



EARTH GREY  
**42706F**  
4X22.7 CM  
1.6X8.9"



HORIZON GREY  
**42702F**  
4X22.7 CM  
1.6X8.9"



DOVE GREY  
**42707F**  
4X22.7 CM  
1.6X8.9"



BALTIC GREY  
**42703F**  
4X22.7 CM  
1.6X8.9"



STONE GREY  
**42708F**  
4X22.7 CM  
1.6X8.9"



DESERT GREY  
**42705F**  
4X22.7 CM  
1.6X8.9"



SABRE GREY  
**42709F**  
4X22.7 CM  
1.6X8.9"

# SURFACE

## SIZE / FINISH

4X22.7 cm  
1.6x8.9"

Natural



## PRODUCT SPECIFICATIONS

COLOR   SIZE FINISH			4x22.7 cm 1.6x8.9"	Regular
MOON GREY	SURFACE-PLATEAU	Natural	42701A	•
	SURFACE-RIDGE	Natural	42701F	•
HORIZON GREY	SURFACE-PLATEAU	Natural	42702A	•
	SURFACE-RIDGE	Natural	42702F	•
BALTIC GREY	SURFACE-PLATEAU	Natural	42703A	•
	SURFACE-RIDGE	Natural	42703F	•
DESERT GREY	SURFACE-PLATEAU	Natural	42705A	•
	SURFACE-RIDGE	Natural	42705F	•
EARTH GREY	SURFACE-PLATEAU	Natural	42706A	•
	SURFACE-RIDGE	Natural	42706F	•
DOVE GREY	SURFACE-PLATEAU	Natural	42707A	•
	SURFACE-RIDGE	Natural	42707F	•
STONE GREY	SURFACE-PLATEAU	Natural	42708A	•
	SURFACE-RIDGE	Natural	42708F	•
SABRE GREY	SURFACE-PLATEAU	Natural	42709A	•
	SURFACE-RIDGE	Natural	42709F	•

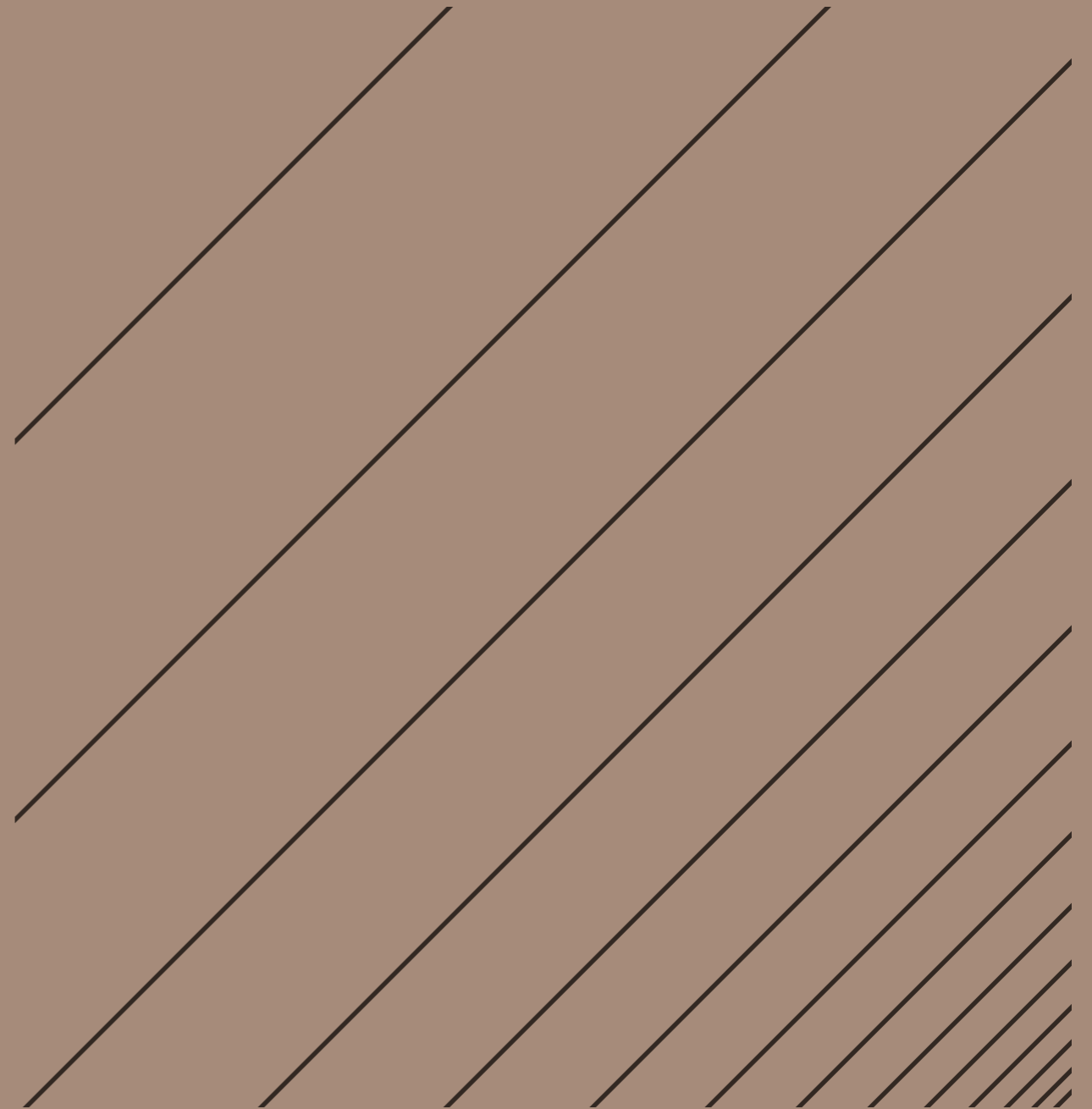
	Water Absorption (%)	Dimension (mm) Length	Width	Thickness	Straightness of Sides	Central Warpage	Edge Curvature	Warpage	Rectangularity
EN14411 (ISO 13006)	+0.5~+3.0	± 1.4	± 0.9	± 0.4	± 1.1	± 1.1	± 1.1	± 1.1	± 1.1
4X22.7 CM 1.6X8.9"	≤ 2.0	± 1.2	± 0.8	± 0.4	± 0.6	+0.8~-0.4	+0.8~-0.4	± 0.8	± 0.8

	Breaking Strength Modulus of Rupture	Thermal Shock Resistance	Resistance to Chemical	Glazed Crack Resistance	Frost Resistance	Stain Resistance
EN14411 (ISO 13006)	S≥1100N / R≥30N/mm <sup>2</sup>	Test method available	Minimum GB	Resistant	Resistant	Minimum class 3
4X22.7 CM 1.6X8.9"	S≥1100N / R≥30N/mm <sup>2</sup>	Resistant	Minimum GLA	Resistant	Resistant	Minimum class 4

PACKING LIST	Pcs Per M <sup>2</sup>	Pcs Per Box	Weight Per Box	Boxes Per PLT
SURFACE-PLATEAU   4X22.7 CM 1.6X8.9"	110.13	80	14.8	130
SURFACE-RIDGE   4X22.7 CM 1.6X8.9"	110.13	60	13.7	100



TIMBER TEXTURE  
CHAMPION'S TEXTURED  
FLOOR SOLUTION IN  
TIMBER LOOK





## ABERDEEN

ANTIQUÉ / BROWN  
C5F25 / C5F23  
Natural  
15X75 / 5.9X29.5"



## ABERDEEN

### COLOR



IVORY  
**C5F21**  
15X75 CM  
5.9X29.5"



GREY  
**C5F22**  
15X75 CM  
5.9X29.5"



BROWN  
**C5F23**  
15X75 CM  
5.9X29.5"



ANTIQUÉ  
**C5F25**  
15X75 CM  
5.9X29.5"

BROWN  
**C5F23**  
Natural  
15X75 / 5.9X29.5"

## SIZE / FINISH



15X75 cm  
5.9x29.5"

Natural



Natural











Shade Variation



## PRODUCT SPECIFICATIONS

COLOR   SIZE FINISH		15x75 cm 5.9x29.5"	Regular
IVORY	Natural	C5F21	•
GREY	Natural	C5F22	•
BROWN	Natural	C5F23	•
ANTIQUE	Natural	C5F25	•

	 Water Absorption (%)	 Dimension (mm)		Thickness	Straightness of Sides	Central Warpage	Edge Curvature	Warpage	Rectangularity
		Length	Width						
EN14411 (ISO 13006)	+0.5~+3.0	± 2.0	± 0.9	± 0.5	± 1.5	± 2.0	± 2.0	± 2.0	± 2.0
15X75 CM 5.9X29.5"	≤ 3.0	± 1.2	± 0.8	± 0.4	± 1.0	+0.8~-0.4	+0.8~-0.4	± 1.0	± 1.0

	 Breaking Strength Modulus of Rupture	 Thermal Shock Resistance	 Resistance to Chemical	 Glazed Crack Resistance	 Frost Resistance	 Stain Resistance
	EN14411 (ISO 13006)	S≥1100N / R≥30N/mm <sup>2</sup>	Test method available	Minimum GB	Resistant	Resistant
15X75 CM 5.9X29.5"	S≥1200N / R≥30N/mm <sup>2</sup>	Resistant	Minimum GLA	Resistant	Resistant	Minimum class 4

PACKING LIST	Pcs Per M <sup>2</sup>	Pcs Per Box	Weight Per Box	Boxes Per PLT
15X75 CM 5.9X29.5"	8.89	8	20	72



## CHERRY

LIGHT CHERRY  
C5708A  
Natural  
15X75 / 5.9X29.5"



## CHERRY

### COLOR



LIGHT CHERRY  
**C5708A**  
15X75 CM  
5.9X29.5"



CHAMPAGNE CHERRY  
**C5709A**  
15X75 CM  
5.9X29.5"



SEPIA CHERRY  
**C5710A**  
15X75 CM  
5.9X29.5"



DARK CHERRY  
**C5711A**  
15X75 CM  
5.9X29.5"



720° VR

CHAMPAGNE CHERRY  
**C5709A**  
Natural  
15X75 / 5.9X29.5"

# CHERRY

## SIZE / FINISH



15X75 cm  
5.9x29.5"

Natural



Natural











Shade Variation



## PRODUCT SPECIFICATIONS

COLOR   SIZE FINISH		15x75 cm 5.9x29.5"	Regular
LIGHT CHERRY	Natural	C5708A	•
CHAMPAGNE CHERRY	Natural	C5709A	•
SEPIA CHERRY	Natural	C5710A	•
DARK CHERRY	Natural	C5711A	•

	 Water Absorption (%)	 Dimension (mm)		Thickness	Straightness of Sides	Central Warpage	Edge Curvature	Warpage	Rectangularity
		Length	Width						
EN14411 (ISO 13006)	+0.5~+3.0	± 2.0	± 0.9	± 0.5	± 1.5	± 2.0	± 2.0	± 2.0	± 2.0
15X75 CM 5.9X29.5"	≤ 3.0	± 1.2	± 0.8	± 0.4	± 1.0	+0.8~-0.4	+0.8~-0.4	± 1.0	± 1.0

	 Breaking Strength Modulus of Rupture	 Thermal Shock Resistance	 Resistance to Chemical	 Glazed Crack Resistance	 Frost Resistance	 Stain Resistance
	EN14411 (ISO 13006)	S≥1100N / R≥30N/mm <sup>2</sup>	Test method available	Minimum GB	Resistant	Resistant
15X75 CM 5.9X29.5"	S≥1200N / R≥30N/mm <sup>2</sup>	Resistant	Minimum GLA	Resistant	Resistant	Minimum class 4

PACKING LIST	Pcs Per M <sup>2</sup>	Pcs Per Box	Weight Per Box	Boxes Per PLT
15X75 CM 5.9X29.5"	8.89	8	20	72

**EVERGLADE**

SILVER / PEWTER  
C5726 / C5728  
Natural  
15X75 / 5.9X29.5"





# EVERGLADE

## COLOR



WHITE  
**C5721**  
15X75 CM  
5.9X29.5"



CREAM  
**C5722**  
15X75 CM  
5.9X29.5"



SILVER  
**C5726**  
15X75 CM  
5.9X29.5"



PEWTER  
**C5728**  
15X75 CM  
5.9X29.5"



SEPIA  
**C5723**  
15X75 CM  
5.9X29.5"



TAUPE  
**C5725**  
15X75 CM  
5.9X29.5"

## DECOR



WHITE  
**C5721T**  
15X75 CM  
5.9X29.5"



CREAM  
**C5722T**  
15X75 CM  
5.9X29.5"



SEPIA  
**C5723T**  
15X75 CM  
5.9X29.5"



TAUPE  
**C5725T**  
15X75 CM  
5.9X29.5"

## SIZE / FINISH



15X75 cm  
5.9x29.5"

Natural



Natural



Shade Variation



## PRODUCT SPECIFICATIONS

COLOR   SIZE FINISH		15x75 cm 5.9x29.5"	Regular	Decor 15x75 cm 5.9x29.5"	Regular
WHITE	Natural	C5721	•	C5721T	•
CREAM	Natural	C5722	•	C5722T	•
SILVER	Natural	C5726	•	-	-
PEWTER	Natural	C5728	•	-	-
SEPIA	Natural	C5723	•	C5723T	•
TAUPE	Natural	C5725	•	C5725T	•

	Water Absorption (%)	Dimension (mm)		Thickness	Straightness of Sides	Central Warpage	Edge Curvature	Warpage	Rectangularity
		Length	Width						
EN14411 (ISO 13006)	+0.5~+3.0	± 2.0	± 0.9	± 0.5	± 1.5	± 2.0	± 2.0	± 2.0	± 2.0
15X75 CM 5.9X29.5"	≤ 3.0	± 1.2	± 0.8	± 0.4	± 1.0	+0.8~-0.4	+0.8~-0.4	± 1.0	± 1.0

	Breaking Strength Modulus of Rupture	Thermal Shock Resistance	Resistance to Chemical	Glazed Crack Resistance	Frost Resistance	Stain Resistance
15X75 CM 5.9X29.5"	S≥1200N / R≥30N/mm <sup>2</sup>	Resistant	Minimum GLA	Resistant	Resistant	Minimum class 4

PACKING LIST	Pcs Per M <sup>2</sup>	Pcs Per Box	Weight Per Box	Boxes Per PLT
15X75 CM 5.9X29.5"	8.89	8	20	72

## LEGNO

LEGNO ASH

C5F07A

Natural

15X75 / 5.9X29.5"



# LEGNO

## COLOR



LEGNO CREME  
**C5F06A**  
15X75 CM  
5.9X29.5"



LEGNO ASH  
**C5F07A**  
15X75 CM  
5.9X29.5"



LEGNO TRUFFLE  
**C5F08A**  
15X75 CM  
5.9X29.5"



LEGNO NOIR  
**C5F09A**  
15X75 CM  
5.9X29.5"



720° VR

LEGNO ASH  
**C5F07A**  
Natural  
15x75 / 5.9x29.5"

## SIZE / FINISH



15X75 cm  
5.9x29.5"

Natural



Natural



Shade Variation



## PRODUCT SPECIFICATIONS

COLOR   SIZE FINISH		15x75 cm 5.9x29.5"	Regular
LEGNO CREME	Natural	C5F06A	•
LEGNO ASH	Natural	C5F07A	•
LEGNO TRUFFLE	Natural	C5F08A	•
LEGNO NOIR	Natural	C5F09A	•

	Water Absorption (%)	Dimension (mm)		Thickness	Straightness of Sides	Central Warpage	Edge Curvature	Warpage	Rectangularity
		Length	Width						
EN14411 (ISO 13006)	+0.5~+3.0	± 2.0	± 0.9	± 0.5	± 1.5	± 2.0	± 2.0	± 2.0	± 2.0
15X75 CM 5.9X29.5"	≤ 3.0	± 1.2	± 0.8	± 0.4	± 1.0	+0.8~-0.4	+0.8~-0.4	± 1.0	± 1.0

	Breaking Strength Modulus of Rupture	Thermal Shock Resistance	Resistance to Chemical	Glazed Crack Resistance	Frost Resistance	Stain Resistance
15X75 CM 5.9X29.5"	S≥1200N / R≥30N/mm <sup>2</sup>	Resistant	Minimum GLA	Resistant	Resistant	Minimum class 4

PACKING LIST	Pcs Per M <sup>2</sup>	Pcs Per Box	Weight Per Box	Boxes Per PLT
15X75 CM 5.9X29.5"	8.89	8	20	72

**MALTA**

TAN ANTIQUE  
C9F13  
Natural  
15X90 / 5.9X35.4"





## MALTA

### COLOR



LIGHT ANTIQUE  
**C9F11**  
15X90 CM  
5.9X35.4"



GREY ANTIQUE  
**C9F12**  
15X90 CM  
5.9X35.4"



TAN ANTIQUE  
**C9F13**  
15X90 CM  
5.9X35.4"



DARK ANTIQUE  
**C9F15**  
15X90 CM  
5.9X35.4"

GREY ANTIQUE  
**C9F12**  
Natural  
15X90 / 5.9X35.4"

## SIZE / FINISH



15X90 cm  
5.9x35.4"

Natural



Natural



Shade Variation



## PRODUCT SPECIFICATIONS

COLOR   SIZE FINISH		15x90 cm 5.9x35.4"	Regular
LIGHT ANTIQUE	Natural	C9F11	•
GREY ANTIQUE	Natural	C9F12	•
TAN ANTIQUE	Natural	C9F13	•
DARK ANTIQUE	Natural	C9F15	•

	Water Absorption (%)	Dimension (mm)		Thickness	Straightness of Sides	Central Warpage	Edge Curvature	Warpage	Rectangularity
		Length	Width						
EN14411 (ISO 13006)	+0.5~+3.0	± 2.0	± 0.9	± 0.5	± 1.5	± 2.0	± 2.0	± 2.0	± 2.0
15X90 CM 5.9X35.4"	≤ 3.0	±1.4	±0.8	± 0.4	± 1.0	+0.8~-0.4	+0.8~-0.4	± 1.0	± 1.0

	Breaking Strength Modulus of Rupture	Thermal Shock Resistance	Resistance to Chemical	Glazed Crack Resistance	Frost Resistance	Stain Resistance
15X90 CM 5.9X35.4"	S≥1200N / R≥30N/mm <sup>2</sup>	Resistant	Minimum GLA	Resistant	Resistant	Minimum class 4

PACKING LIST	Pcs Per M <sup>2</sup>	Pcs Per Box	Weight Per Box	Boxes Per PLT
15X90 CM 5.9X35.4"	7.41	8	25	72





## SANTIAGO

TAWNY  
C5703  
Structured  
15X75 / 5.9X29.5"



## SANTIAGO

### COLOR



IVORY  
**C5701**  
15X75 CM  
5.9X29.5"



BEIGE  
**C5702**  
15X75 CM  
5.9X29.5"



TAWNY  
**C5703**  
15X75 CM  
5.9X29.5"



BROWN  
**C5705**  
15X75 CM  
5.9X29.5"

TAWNY  
**C5703**  
Structured  
15X75 / 5.9X29.5"

## SIZE / FINISH



15X75 cm  
5.9x29.5"

Structured



Structured











Shade Variation



## PRODUCT SPECIFICATIONS

COLOR   SIZE FINISH		15x75 cm 5.9x29.5"	Regular
IVORY	Structured	C5701	•
BEIGE	Structured	C5702	•
TAWNY	Structured	C5703	•
BROWN	Structured	C5705	•

	 Water Absorption (%)	 Dimension (mm)		Thickness	Straightness of Sides	Central Warpage	Edge Curvature	Warpage	Rectangularity
		Length	Width						
EN14411 (ISO 13006)	+0.5~+3.0	± 2.0	± 0.9	± 0.5	± 1.5	± 2.0	± 2.0	± 2.0	± 2.0
15X75 CM 5.9X29.5"	≤ 3.0	± 1.2	± 0.8	± 0.4	± 1.0	+0.8~-0.4	+0.8~-0.4	± 1.0	± 1.0

	 Breaking Strength Modulus of Rupture	 Thermal Shock Resistance	 Resistance to Chemical	 Glazed Crack Resistance	 Frost Resistance	 Stain Resistance
15X75 CM 5.9X29.5"	S≥1200N / R≥30N/mm <sup>2</sup>	Resistant	Minimum GLA	Resistant	Resistant	Minimum class 4

PACKING LIST	Pcs Per M <sup>2</sup>	Pcs Per Box	Weight Per Box	Boxes Per PLT
15X75 CM 5.9X29.5"	8.89	8	20	72

 CHAMPION



**CHAMPION BUILDING MATERIALS CO., LTD.**

No. 200-7, Zhugaocuo, Dapu Li 13 Lin, Zhunan Town, Miaoli Hsien, Taiwan, R.O.C.  
+886 - 37- 583810      [export@mail.champion.com.tw](mailto:export@mail.champion.com.tw)      [www.champion-tile.com](http://www.champion-tile.com)