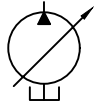
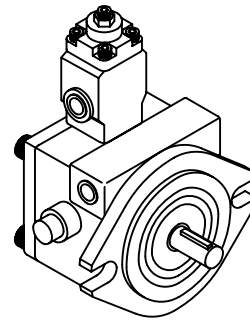


VPKCF8  
VPKCF12  
VPKCF15  
VPKCF20



SYMBOL



### FEATURES 特點

Model	Operating Pressure ( Kgf / cm <sup>2</sup> )		Rated Speed (rpm)		Net Weight
			MAX	MIN	
VPKCF8	A1: 5-18 A3:30-55	A2:15-35 A4:50-70	1800	800	4.8Kg
VPKCF12	A1: 5-18 A3:30-55	A2:15-35 A4:50-70	1800	800	4.8Kg
VPKCF15	A1: 5-18 A3:30-55	A2:15-35 A4:50-70	1800	800	5.2Kg
VPKCF20	A1: 5-18 A3:30-55	A2:15-35 A4:50-70	1800	800	5.2Kg

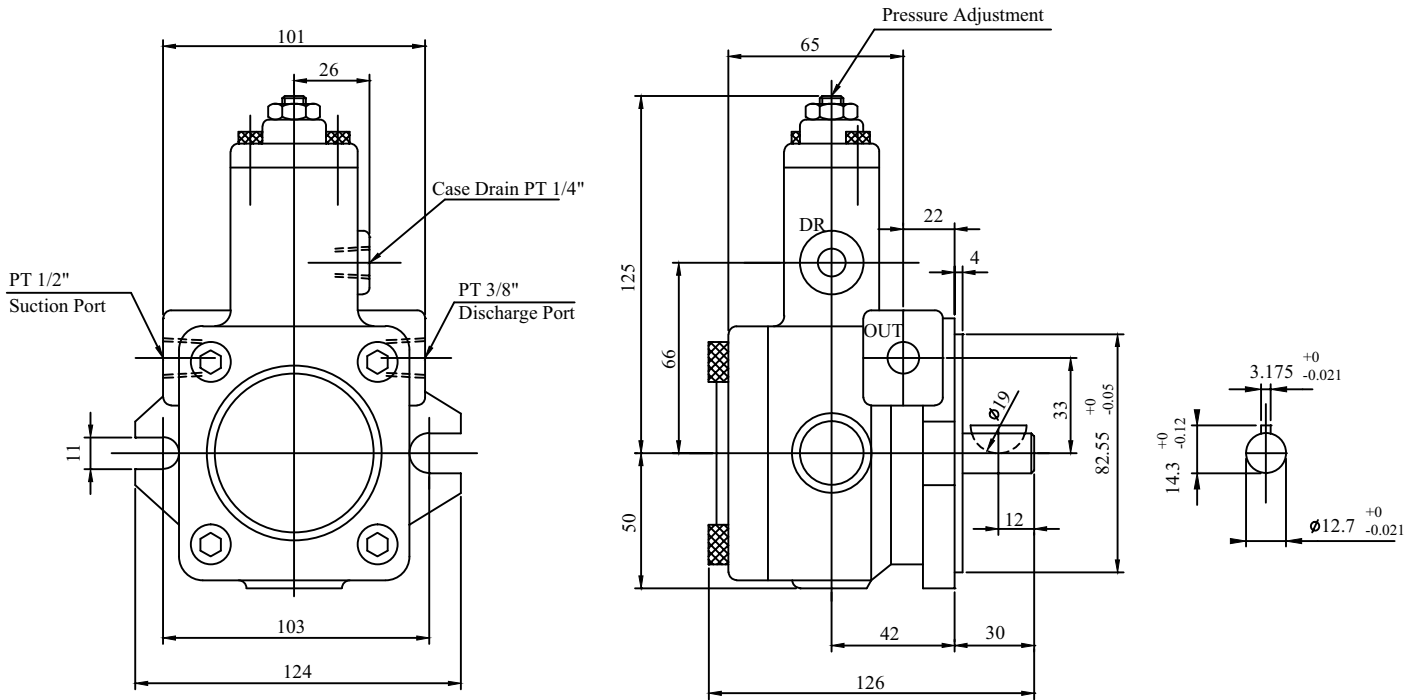
### ORDERING CODE 訂購指引

**VPKC-F\*A\*-01-A**

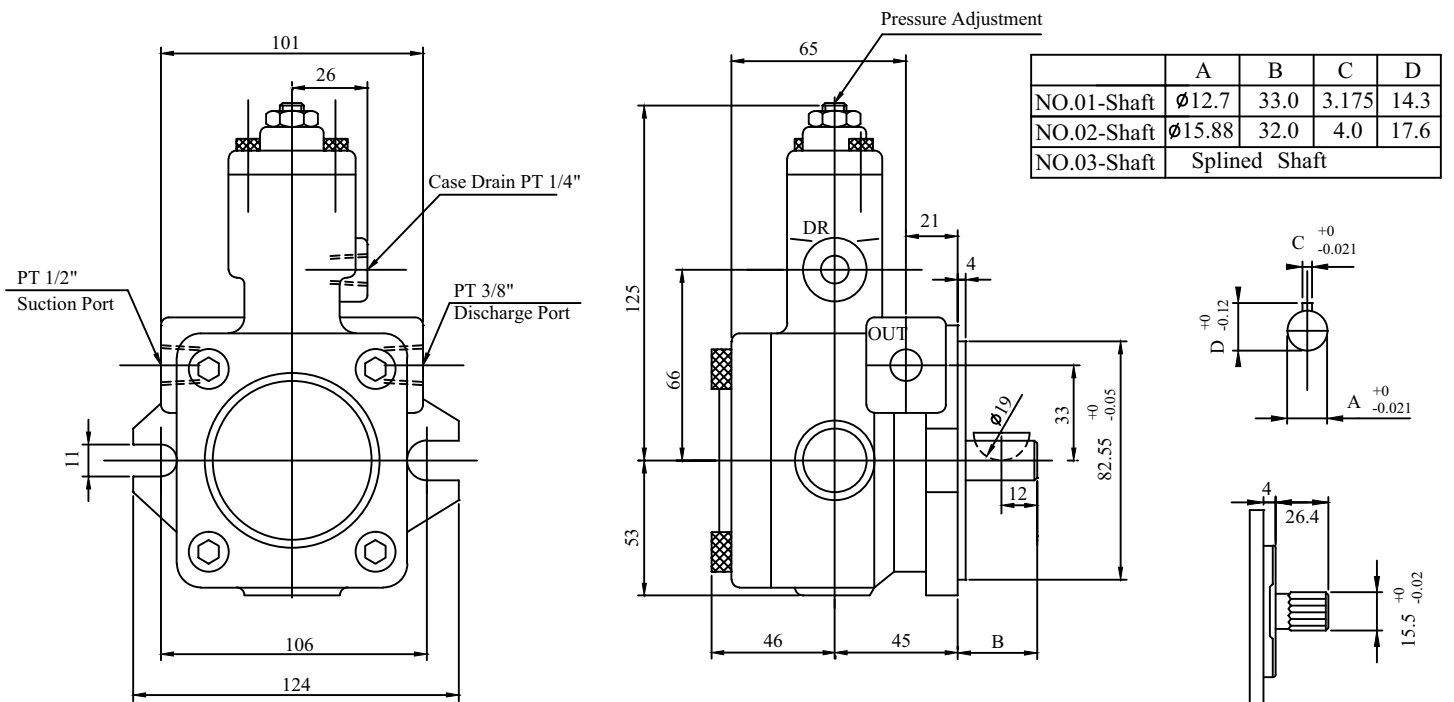
①      ②③      ④      ⑤      ⑥

- ①—— Series Number
- ②—— Flange Type
- ③—— Output Flow at 1800rpm  
8,12,15,20 ( ℓ /min )
- ④—— Pressure Adjusting Range  
1:5-18    2:15-35  
3:30-55    4:50-70 ( Kgf/cm<sup>2</sup> )
- ⑤—— Shaft Type  
01:No.01 Shaft  
02:No.02 Shaft
- ⑥—— Type of Suction Port & Discharge Port  
A or No Marking: PT  
B: NPT  
C: SAE  
D: BSP

### VPKC F8 & 12

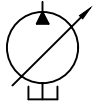
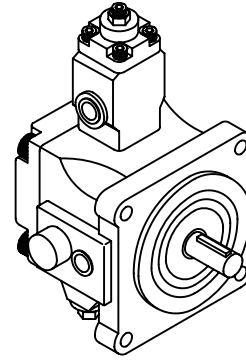


### VPKC F15 & 20



**NO: 03 Shaft**  
9-Teeth splined  
30° pressure angle

VPKCF23  
VPKCF26  
VPKCF30  
VPKCF40



SYMBOL

### FEATURES 特點

Model	Operating Pressure ( Kgf / cm <sup>2</sup> )		Rated Speed (rpm)		Net Weight
			MAX	MIN	
VPKCF23	A1: 5-18 A3:30-55	A2:15-35 A4:50-70	1800	800	9.0Kg
VPKCF26	A1: 5-18 A3:30-55	A2:15-35 A4:50-70	1800	800	9.0Kg
VPKCF30	A1: 5-18 A3:30-55	A2:15-35 A4:50-70	1800	800	9.0Kg
VPKCF40	A1: 5-18 A3:30-55	A2:15-35 A4:50-70	1800	800	9.0Kg

### ORDERING CODE 訂購指引

VPKC-F\*A\*-01-A

①    ②③    ④    ⑤    ⑥

- ① — Series Number
- ② — Flange Type
- ③ — Output Flow at 1800rpm  
23,26,30,40 ( ℓ /min )
- ④ — Pressure Adjusting Range  
1:5-18    2:15-35  
3:30-55    4:50-70 ( Kgf/cm<sup>2</sup> )
- ⑤ — Shaft Type
- ⑥ — Type of Suction Port & Discharge Port Type  
A or No Marking: PT  
B: NPT  
C: SAE  
D: BSP

### VPKCF30

