

DVQ20

Weight : Flange Type 12.5 Kg
Foot Type 15 Kg

DVQ25

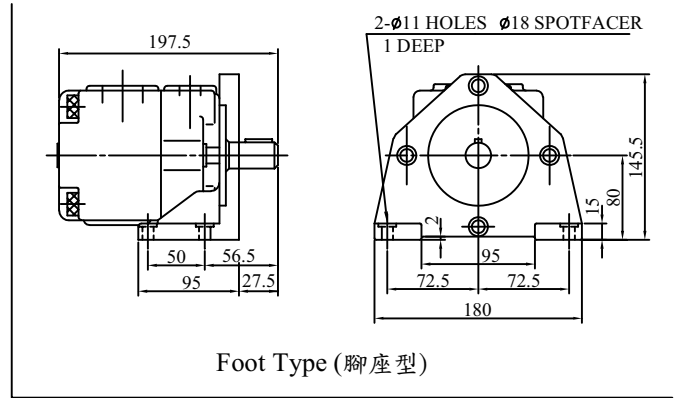
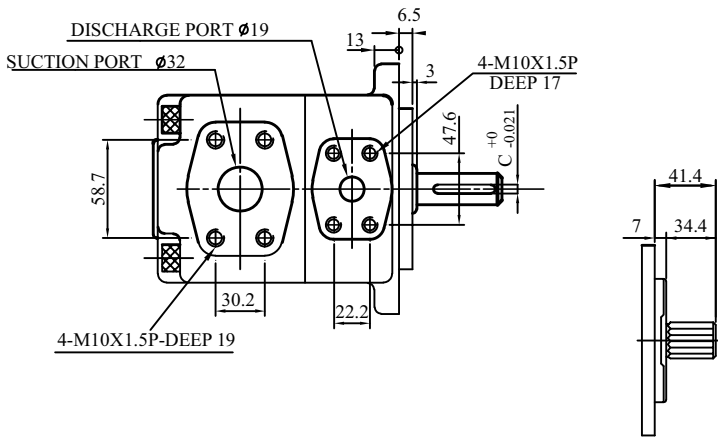
Weight : Flange Type 18 Kg
Foot Type 23 Kg

	-26	-F	-R	A	A	01
Model number 型號	Displacement c.c/rev 吐油量	Mounting Type 安裝方式	Rotation 轉向	Discharge Position 出口位置	Suction Position 進口位置	Shaft Type 心軸種類
DVQ20	6,8,11,14 17,19,23 26,32,34 38,44	F: Flange Type 法蘭型 L: Foot Type 腳座型	View from Shaft End 從心軸方向看 R: Clockwise 順時針 L: Anti- Clockwise 反時針	A: Upward (Normal) 向上 B: Downward 向下 R: On Right Hand 右邊 L: On Left Hand 左邊	A: Upward (Normal) 向上 B: Downward 向下 R: On Right Hand 右邊 L: On Left Hand 左邊	01: Normal
DVQ25	18,22,26 32,38,43 47,52,60 65,75					

Model 型號		Deliver Flow (ℓ /min) at no-load pressure 無負壓的傳輸流量				Running Speed (rpm) 轉速		Max Pressure (Kg/cm ²) 最高壓力	
		Running Speed (rpm) 轉速				Max 最大	Min 最小		
		1000	1200	1500	1800			Cont.	Peak.
DVQ20	06	6.2	7.4	9.3	11.2	1800	800	210	260
	08	8.1	9.7	12.1	14.6	1800	800	210	260
	11	11.2	13.4	13.4	20.1	1800	800	210	260
	14	14.3	17.1	21.5	25.7	1800	800	210	260
	17	17.1	20.5	25.6	30.7	1800	800	210	260
	19	19.2	23.0	28.8	34.5	1800	800	210	260
	23	23.3	27.9	34.9	41.9	1800	800	210	260
	26	26.1	31.3	39.1	46.9	1800	800	210	260
	32	32.1	38.3	47.6	—	1500	800	175	240
	34	34.1	40.8	50.4	—	1500	800	175	240
	38	38.1	45.9	—	—	1200	800	175	240
44	44.1	52.9	—	—	1200	800	175	210	
DVQ25	18	18.1	21.7	27.2	32.6	1800	800	210	260
	22	22.1	26.5	33.3	39.8	1800	800	210	260
	26	26.2	31.4	39.3	47.1	1800	800	210	260
	32	32.1	38.5	48.1	57.7	1800	800	210	260
	38	38.2	45.8	57.3	68.7	1800	800	210	260
	43	43.2	51.8	64.8	77.7	1800	800	210	260
	47	47.1	56.5	70.0	85.0	1800	800	210	260
	52	52.3	62.7	78.4	94.1	1800	800	210	260
	60	60.2	72.7	90.3	108.3	1800	800	210	260
	65	65.3	78.3	97.9	117.5	1800	800	210	230
	75	75.0	90.0	112.5	—	1500	800	210	230

DVQ20

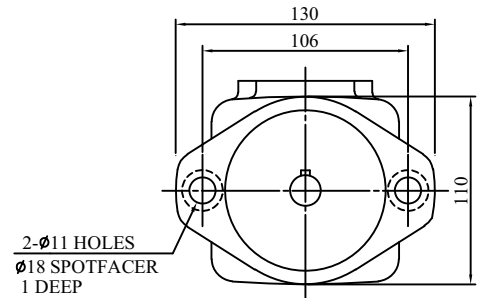
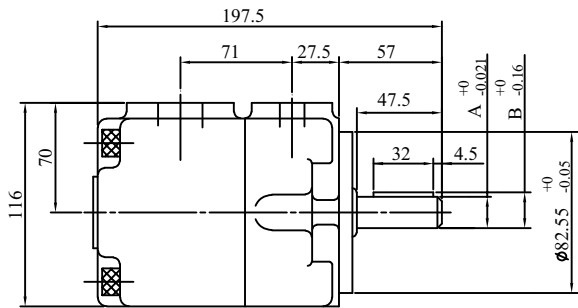
Max. Pressure: 260 Kg/cm² (Peak)
Max. Speed: 1800 rpm



NO.04-Shaft

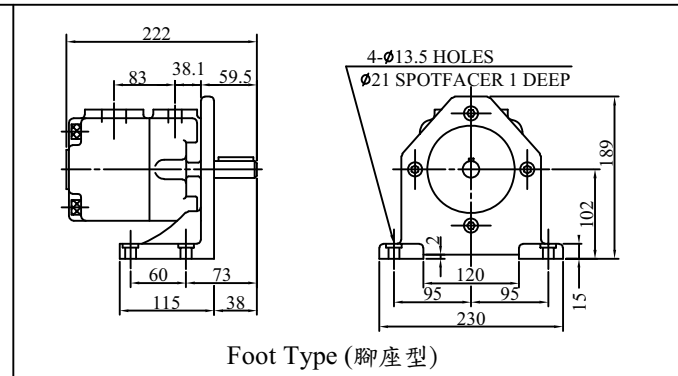
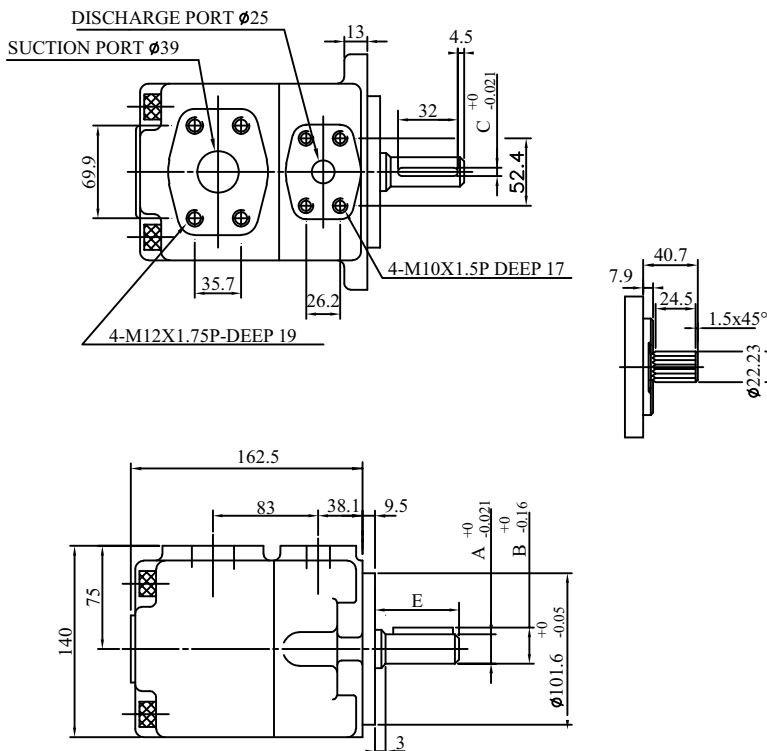
13-Teeth Spline
7/8" (22.225) DIA
30° pressure angle
Flat root side fit

	A	B	C
NO.01-Shaft	$\phi 19.05$	21.24	4.76
NO.02-Shaft	$\phi 22.23$	24.5	4.76
NO.03-Shaft	$\phi 22.23$	25.01	6.35
NO.04-Shaft	Spline shaft		



DVQ25

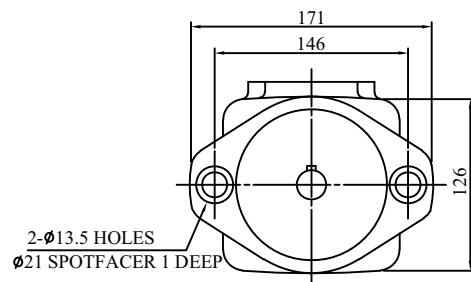
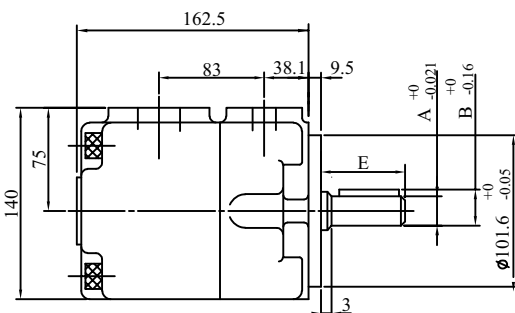
Max. Pressure: 260 Kg/cm² (Peak)
Max. Speed: 1800 rpm



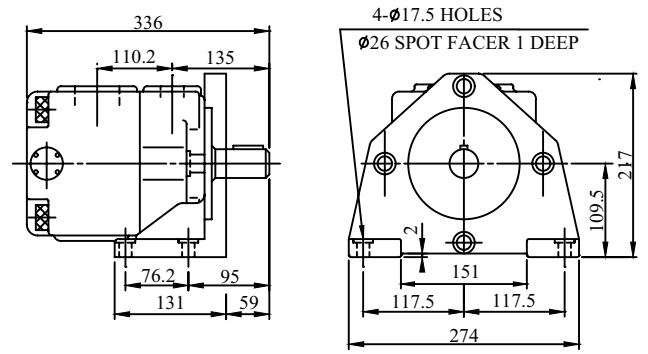
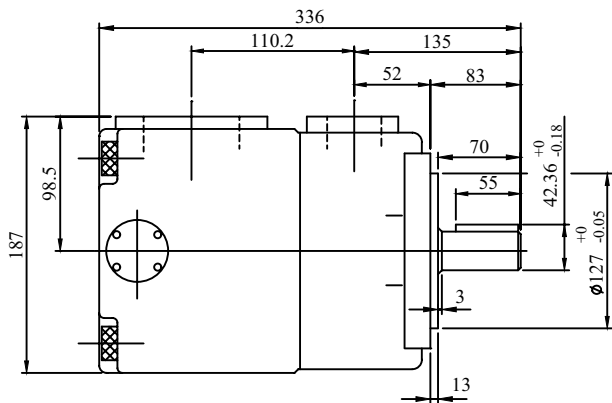
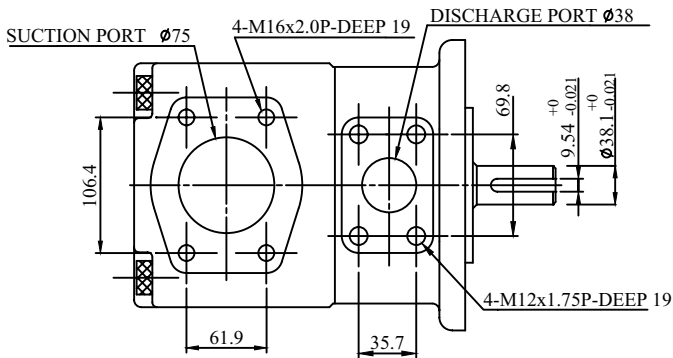
NO.04-Shaft

16/32 d.p.
-13 teeth
30° pressure angle
Flat root side fit.

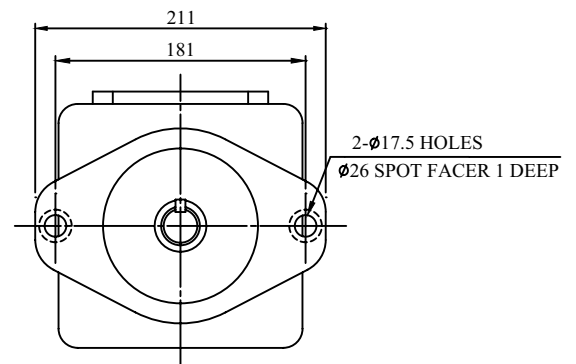
	A	B	C	E
NO.01-Shaft	$\phi 22.23$	24.5	6.35	50.5
NO.02-Shaft	$\phi 25.4$	28.18	6.35	50.5
NO.03-Shaft	$\phi 30$	33	7	59
NO.04-Shaft	Spline shaft			



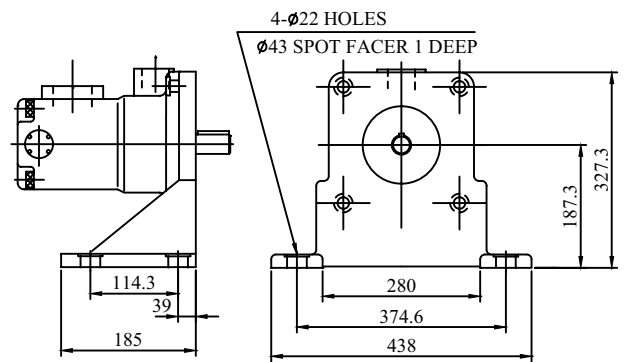
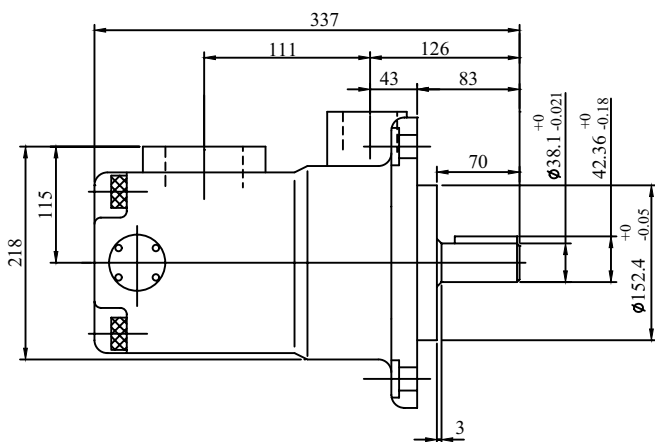
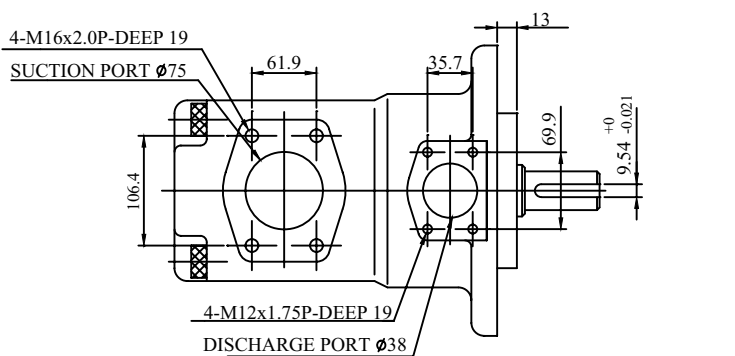
VQ45 Max. Pressure: 175 Kg/cm² (Peak)
Max. Speed: 1800 rpm



Foot Type (腳座型)



DVQ45 Max. Pressure: 175 Kg/cm² (Peak)
Max. Speed: 1800 rpm



Foot Type (腳座型)

