



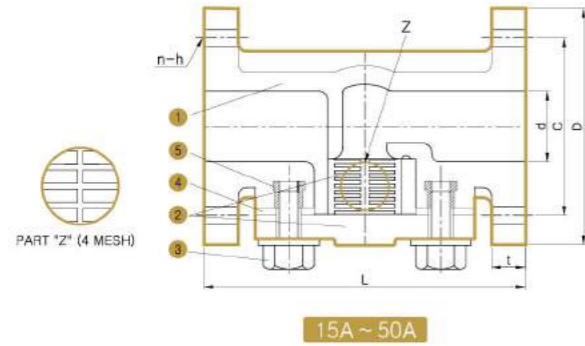
T-Strainer

Flange Type

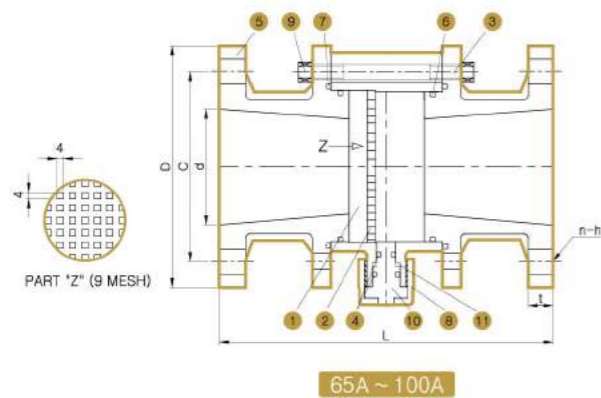
- Material : PVC, PP, CPVC, PVDF
- Size : 15mm - 300mm, 1/2" - 12"
- Pressure Rating : JIS 10kgf/cm², 150 PSI
- Packing : EPDM or FPM
- Connections : ANSI 150 PSI Flanged
JIS 10kgf/cm² Flanged

Special Features

- T-Type
- 여과 역할에 최적화 된 밸브
- 수평 수직 배관 적용 가능
- Plastic Filter로 인해 내식성 우수
- 유체 방향에 유의하여 설치



NO	PARTS	MATERIALS
1	BODY	PP/PVDF/PVC/CPVC
2	BONNET & FILTER	PP/PVDF/PVC/CPVC
3	BOLT	SS41 (PP COATED) SUS 304
4	PACKING	EPDM FPM
5	INSERTED NUT	BC



NO	PARTS	MATERIALS
1	BODY	PP/PVDF/PVC/CPVC
2	FILTER	PP/PVDF/PVC/CPVC
3	STUD BOLT	SS41 (PLATING : Zn)
4	O-RING	EPDM FPM
5	FLANGE	PP/PVDF/PVC/CPVC
6	SIDE O-RING	EPDM FPM
7	FACE O-RING	EPDM FPM
8	GLAND CAP	PP/PVDF/PVC/CPVC
9	NUT	SS41 (PP COATED)
10	STED	PP/PVDF/PVC/CPVC
11	STEM RING	PE PTFE

PVC&CPVC

JIS

Parts Size	d	L	t	JIS 10K			MAX Working Pressure (kg/cm ²)
				D	C	n-h	
15A	15	115	13	95	70	4-15	10
20A	20	122	14	100	75	4-15	10
25A	25	140	15	125	90	4-19	10
30A	30	175	16	135	100	4-19	10
40A	40	169	16	140	105	4-19	10
50A	50	191	16	155	120	4-19	10
65A	65	265	20.5	175	140	4-19	7.5
80A	75	266	22.0	185	150	8-19	7.5
100A	100	301	23.0	210	175	8-19	7.5
125A	125	362	25.0	250	210	8-25	5
150A	150	364	25.0	280	240	8-25	5

unit : mm

ANSI

Parts Size	d	L	t	ANSI CLASS 150			MAX Working Pressure (kg/cm ²)
				D	C	n-h	
1/2"	0.59	4.53	0.51	3.50	2.38	4-0.63	10
3/4"	0.79	4.80	0.55	3.88	2.75	4-0.63	10
1"	0.98	5.51	0.59	4.25	3.12	4-0.63	10
1-1/4"	1.18	6.89	0.63	4.62	3.50	4-0.63	10
1-1/2"	1.57	6.65	0.63	5.00	3.88	4-0.63	10
2"	1.97	7.52	0.63	6.00	4.75	4-0.63	10
2-1/2"	2.64	10.43	0.81	7.00	5.50	4-0.75	7.5
3"	2.95	10.47	0.87	7.50	6.00	4-0.75	7.5
4"	3.94	11.85	0.91	9.00	7.50	8-0.75	7.5
5"	4.92	14.25	0.98	10.00	8.50	8-0.87	5
6"	5.91	14.33	0.98	11.00	9.50	8-0.87	5

unit : inch



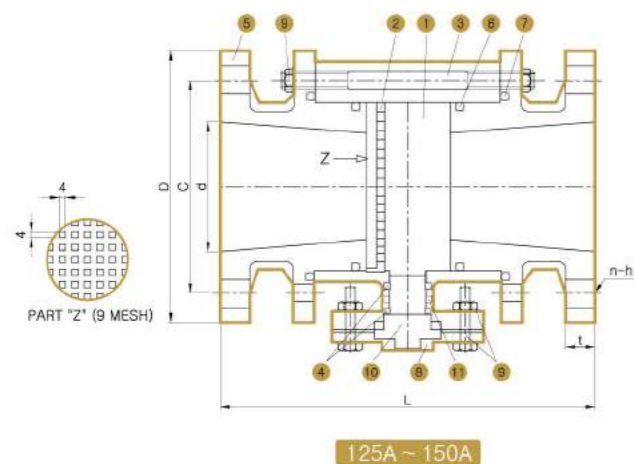
T-Strainer

Flange Type

- Material : PVC, PP, CPVC, PVDF
- Size : 15mm - 300mm, 1/2" - 12"
- Pressure Rating : JIS 10kgf/cm², 150 PSI
- Packing : EPDM or FPM
- Connections : ANSI 150 PSI Flanged
JIS 10kgf/cm² Flanged

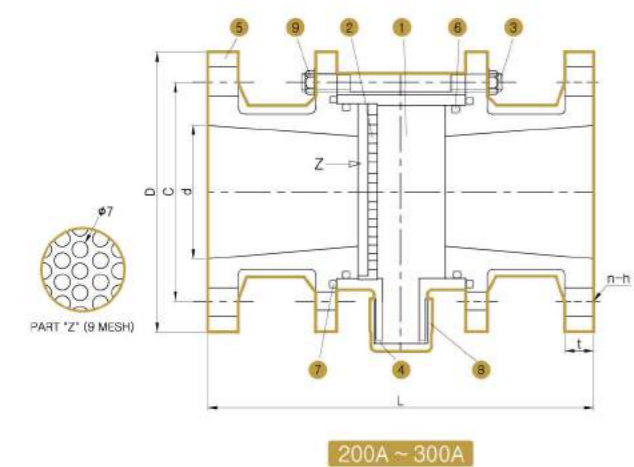
Special Features

- T-Type
- 여과 역할에 최적화 된 밸브
- 수평 수직 배관 적용 가능
- Plastic Filter로 인해 내식성 우수
- 유체 방향에 유의하여 설치



125A ~ 150A

NO	PARTS	MATERIALS
1	BODY	PP / PVDF / PVC / CPVC
2	FILTER	PP / PVDF / PVC / CPVC
3	STUD BOLT	SS41 (PLATING : Zn)
4	O-RING	EPDM FPM
5	FLANGE	PP / PVDF / PVC / CPVC
6	SIDE O-RING	EPDM FPM
7	FACE O-RING	EPDM FPM
8	GLAND CAP	PP / PVDF / PVC / CPVC
9	BOLT & NUT	SS41 (PP COATED)
10	STEM	PP / PVDF / PVC / CPVC
11	STEM RING	PE PTFE



200A ~ 300A

NO	PARTS	MATERIALS
1	BODY	PP
2	FILTER	PP
3	STUD BOLT	SS41 (PLATING : Zn)
4	O-RING	EPDM FPM
5	FLANGE	PP
6	SIDE O-RING	EPDM FPM
7	FACE O-RING	EPDM FPM
8	DRAIN CAP	PP
9	NUT	SUS 304

PP&PVDF

JIS

Parts Size	d	L	t	JIS 10K			MAX Working Pressure (kg/cm ²)
				D	C	n-h	
15A	15	114	13.0	95	70	4-15	10
20A	20	120	14.0	100	75	4-15	10
25A	25	137	14.5	125	90	4-19	10
30A	30	166	16.0	135	100	4-19	10
40A	40	166	16.0	140	105	4-19	10
50A	50	186	16.0	155	120	4-19	10
65A	65	261	20.5	175	140	4-19	7.5
80A	75	266	22.0	185	150	8-19	7.5
100A	100	300	23.0	210	175	8-19	7.5
125A	125	360	25.0	250	210	8-25	5
150A	150	363	25.5	280	240	8-25	5
200A	202	404	27.0	330	290	12-23	5
250A	250	463	30.0	403	355	12-25	5
300A	230	540	30.0	445	400	16-25	5

unit : mm

ANSI

Parts Size	d	L	t	ANSI CLASS 150			MAX Working Pressure (kg/cm ²)
				D	C	n-h	
1/2"	0.59	4.49	0.51	3.50	2.38	4-0.63	10
3/4"	0.79	4.72	0.55	3.88	2.75	4-0.63	10
1"	0.98	5.39	0.57	4.25	3.12	4-0.63	10
1-1/4"	1.18	6.54	0.63	4.62	3.50	4-0.63	10
1-1/2"	1.57	6.54	0.63	5.00	3.88	4-0.63	10
2"	1.97	7.32	0.63	6.00	4.75	4-0.75	10
2-1/2"	2.64	10.28	0.81	7.00	5.50	4-0.75	7.5
3"	2.95	10.47	0.87	7.50	6.00	4-0.75	7.5
4"	3.94	11.81	0.91	9.00	7.50	8-0.75	7.5
5"	4.92	14.17	0.98	10.00	8.50	8-0.87	5
6"	5.91	14.29	1.00	11.00	9.50	8-0.87	5
8"	7.95	15.91	1.06	13.05	11.75	8-0.87	5
10"	9.84	18.23	1.18	16.00	14.25	12-0.98	5
12"	9.06	21.26	1.08	19.00	17.00	12-0.98	5

unit : inch

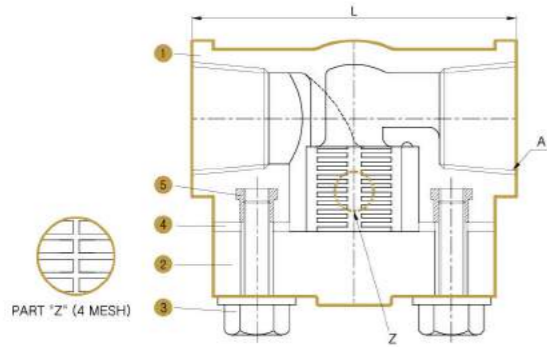
T-Strainer

Thread Type

- Material : PVC, CPVC, PP, PVDF
- Filter : PVC, CPVC, PP, PVDF
- Size : 15mm - 50mm, 1/2" - 2"
- Pressure Rating : JIS 10kgf/cm², 150 PSI
- Packing : EPDM or FPM
- Connections : PT Thread

Special Features

- T-Type
- 여과 역할에 최적화 된 밸브
- 수평 수직 배관 적용 가능
- Plastic Filter로 인해 내식성 우수
- 유체 방향에 유의하여 설치



NO	PARTS	MATERIALS
1	BODY	PP / PVDF / PVC / CPVC
2	BONNET & FILTER	PP / PVDF / PVC / CPVC
3	BOLT	SS41 (PP COATED) SUS 304
4	PACKING	EPDM FPM
5	INSERTED NUT	BC



PP&PVDF

JIS

Size	Parts	L	H	JIS B 0203 A	MAX Working Pressure (kg/cm ²)
15A		75	42	PT 1/2"	10
20A		91	52	PT 3/4"	10
25A		105	52	PT 1"	10
30A		128	73	PT 1 1/4"	10
40A		127	73	PT 1 1/2"	10
50A		151	82	PT 2"	10

PVC&CPVC

JIS

Size	Parts	L	H	JIS B 0203 A	MAX Working Pressure (kg/cm ²)
15A		77	42	PT 1/2"	10
20A		92	52	PT 3/4"	10
25A		107	52	PT 1"	10
30A		130	73	PT 1 1/4"	10
40A		128	73	PT 1 1/2"	10
50A		153	82	PT 2"	10