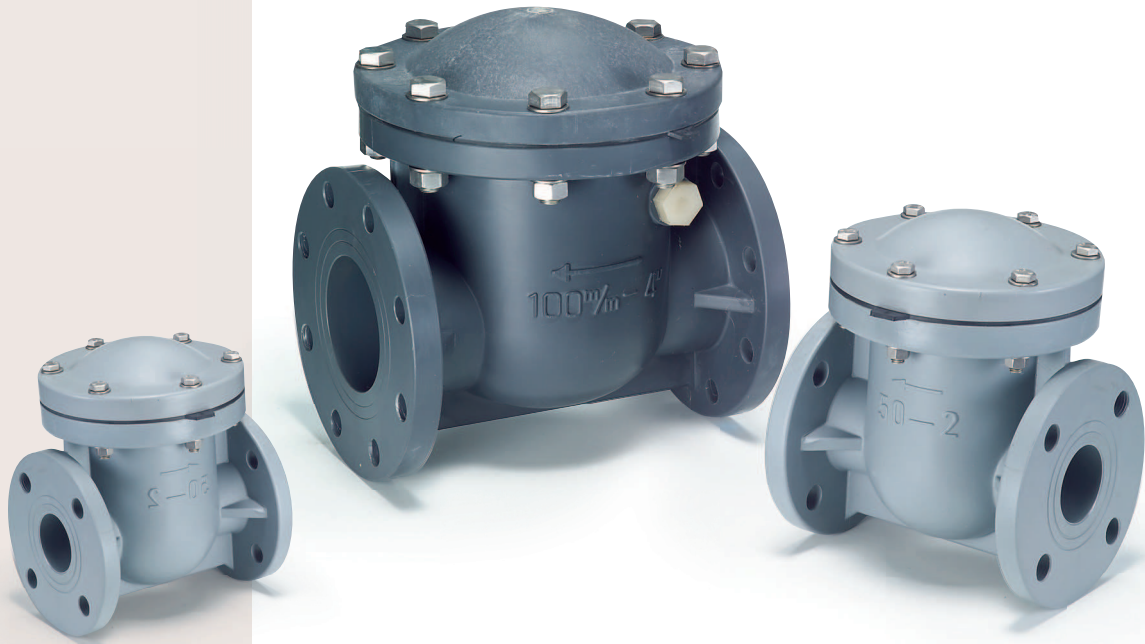




CHECK VALVE / HORIZONTAL TYPE



JW Series

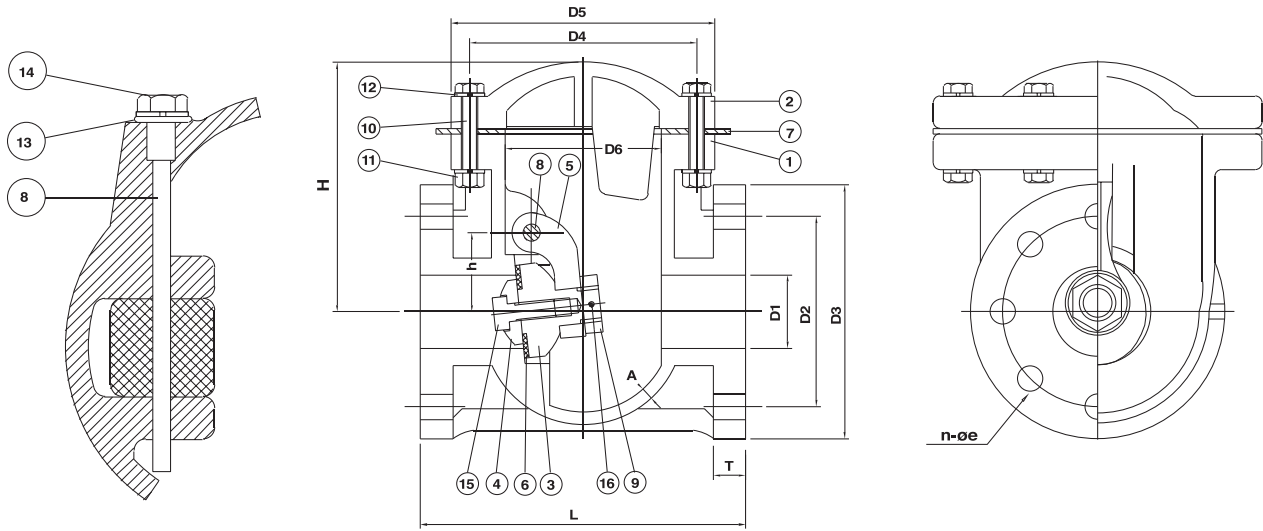
JW300 SIZE: 1"-8"

MATERIALS OF CONSTRUCTION

No.	Parts	Pcs.	Materials	No.	Parts	Pcs.	Materials
1	Body	1	UPVC, PP, CPVC, PPG, PVDF	9	Disc Holder	1	PP,PVDF
2	Bonnet	1	UPVC, CPVC, PPG, PVDF	10	Bolts	6...DN15-50 8...DN65-125 10...DN150 12...DN200	SUS304
3	Disc	1	UPVC, PP, CPVC, PPG, PVDF	11	Nuts		SUS304
4	Sheet Gasket Holder	1	UPVC, PP, CPVC, PPG, PVDF	12	Washers		SUS304
5	Swing Arms	1	UPVC, PP, CPVC, PPG, PVDF	13	O'ring	1	EPDM,VITON
6	Disc Gasket	1	EPDM, VITON , TEFLON	14	Shaft Holder	1	PVDF
7	Bonnet Gasket	1	EPDM, VITON , TEFLON	15	Set Bolts	1...DN15-80 3...DN100-125 4...DN150-200	PVDF
8	Shaft	1	PP, PVDF	16	Set Pin	1	SUS304 1/2"~1-1/2" PVDF 2" ~ 8"

DIMENSIONS TABLE

Nom. Size DN (inch)	JIS														Unit: mm		
	D1	D2	D3	e	n No. of holes	D4	D5	D6	L	T	A	h	H	D	Test Press (kgf/cm ²)	Working Press (kgf/cm ²)	Mini Back Pressure Rates (kgf/cm ²)
25(1")	25	90	126	19	4	110	130	75	160	15	6	40	129	8	15	10	0.34
40(1-1/2")	41	105	151	19	4	125	145	85	180	18	8	45	141	8	15	10	0.50
50(2")	52	120	166	19	4	155	180	105	200	18	8	55	165	10	15	10	0.50
65(2-1/2")	80	140	187	19	4	181	205	130	260	20	9	70	180	12	15	10	0.6
80(3")	80	150	201	19	8	181	205	130	260	20	9	70	180	12	15	10	0.6
100(4")	100	175	232	19	8	235	265	170	300	24	10	90	216	16	10	7	0.68
125(5")	125	210	254	23	8	285	330	210	350	24	14	110	239.5	18	10	7	0.68
150(6")	150	240	288	23	8	330	370	250	400	30	16	135	273	20	10	7	0.84
200(8")	200	290	348	23	12	390	425	300	500	30	18	170	310	20	10	7	0.84



DN25~DN200

DIMENSIONS TABLE

ANSI															Unit: inch		
Nom. Size DN (inch)	D1	D2	D3	e	n No. of holes	D4	D5	D6	L	T	A	h	H	D	Test Press (lb/in ²)	Working Press (lb/in ²)	Mini Back Pressure Rates (PSI)
25(1")	1.00	3.13	4.96	0.63	4	4.34	5.13	2.97	6.31	0.59	0.24	1.56	5.07	0.31	222	150	5
40(1-1/2")	1.63	3.88	5.94	0.63	4	4.94	5.72	3.34	7.09	0.70	0.31	1.78	5.55	0.31	222	150	7.5
50(2")	2.06	4.75	6.54	0.75	4	6.09	7.09	4.13	7.88	0.70	0.31	2.16	6.50	0.41	222	150	7.5
65(2-1/2")	3.15	5.50	7.36	0.75	4	7.13	8.06	5.13	10.25	0.79	0.35	2.75	7.09	0.47	222	150	8.5
80(3")	3.15	6.00	7.91	0.75	4	7.13	8.06	5.13	10.25	0.79	0.35	2.75	7.09	0.47	222	150	8.5
100(4")	3.94	7.50	9.13	0.75	8	9.25	10.44	6.69	11.82	0.94	0.39	3.53	8.50	0.63	222	150	10
125(5")	4.94	8.50	10.0	0.88	8	11.22	13.00	8.28	13.78	0.94	0.55	4.34	9.43	0.72	150	100	10
150(6")	5.90	9.50	11.33	0.88	8	13.00	14.56	9.84	15.75	1.18	0.63	5.31	10.75	0.78	150	100	12.5
200(8")	7.88	11.75	13.70	0.88	8	15.31	16.71	11.81	19.69	1.18	0.71	6.69	12.21	0.78	150	100	12.5

DIN															Unit: mm		
Nom. Size DN (inch)	D1	D2	D3	e	n No. of holes	D4	D5	D6	L	T	A	h	H	D	Test Press (bar)	Working Press (bar)	Mini Back Pressure Rates (bar)
25(1")	25	85	126	14	4	110	130	75	160	15	6	40	129	8	15	10	0.34
40(1-1/2")	41	110	151	18	4	125	145	85	180	18	8	45	141	8	15	10	0.5
50(2")	52	125	166	18	4	155	180	105	200	18	8	55	165	10	15	10	0.5
65(2-1/2")	80	145	187	18	4	181	205	130	260	20	9	70	180	12	15	10	0.6
80(3")	80	160	201	18	8	181	205	130	260	20	9	70	180	12	15	10	0.6
100(4")	100	180	232	18	8	235	265	170	300	24	10	90	216	16	15	10	0.68
125(5")	125	210	254	18	8	285	330	210	350	24	14	110	239.5	18	10	7	0.68
150(6")	150	240	288	23	8	330	370	250	400	30	16	135	273	20	10	7	0.84
200(8")	200	295	348	23	8	390	425	300	500	30	18	170	310	20	10	7	0.84

The dimension table is calculated based on PVC material.
 ✘ The valve of test pressure is calculated based on PVC PVDF materials.
 The valve of test pressure for PP material is 70% based on the table.
 The flanged length tolerance is according to EN558-1:1995.