

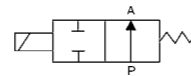
2W/2S常开系列电磁阀
2W/2S Normal Open Series Solenoid Valve



2W040-10NO 2W160-15NO 2W250-25NO-E



2S160-15NO 2S250-25NO-E



2W - 160 - 10 - NO - AC110V - D

规格代码 Specification Code

2W : 二位二通电磁阀 (直动式)
2W: Two position two way solenoid valve(direct drive type)

2S : 不锈钢二位二通电磁阀 (直动式)
2S: Stainless steel two position two way solenoid valve(direct drive type)

流量孔径 Aperture of Flow Rate

040:4.0mm 160:16mm

200:20mm 250:25mm

接管口径 Joint Pipe Bore

10: 3/8" 15:1/2"

20:3/4" 25:1"

初始状态 Initial Estate

NO : 常开型 Normal Open

标准电压 Standard Voltage

DC12V
DC24V
AC24V 50/60Hz
AC36V 50/60Hz
AC110V 50/60Hz
AC220V 50/60Hz
AC380V 50/60Hz

接线形式 Wiring Form

空白 : 表示引线式铁壳线圈 Blank:Lead Wire Type

D : 接线盒式封塑线圈 Join Connector

E : 防爆线圈 Blast-proof Coil

G : 防水线圈 Water-proof Coil

2W/2S常开系列电磁阀
2W/2S Normal Open Series Solenoid Valve

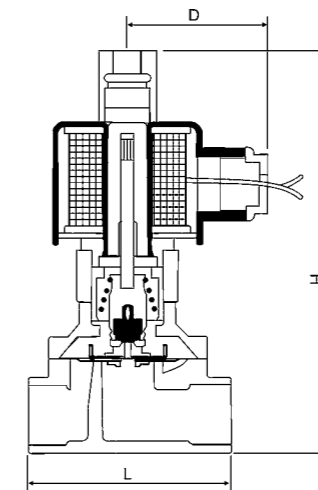


技术参数 Specification

型号 Model	2W040-10NO	2W160-10NO	2W160-15NO	2W200-20NO	2W250-25NO
工作介质 Working Medium	空气、水、油、瓦斯/Air, Water, Oil, Gas				
动作方式 Motion Pattern	直动式 Direct Drive Type				
型式 Type	常开型/Normal Open Type				
流量孔径 (mm) Aperture of Flow Rate	4	16	16	20	25
CV值 CV Value	0.6	4.8	4.8	7.6	12
接管口径 Joint Pipe Bore	3/8"	3/8"	1/2"	3/4"	1"
使用流体粘滞度 Operation Fluid Viscosity	20 CST以下(below)				
使用压力 (kgf/cm ²) Working-pressure	水/Water: 0~5, 空气/Air: 0~7, 油/oil: 0~5, 瓦斯/Gas: 0~7				
最大耐压力 (kgf/cm ²) Max. Pressure Resistance	10.5				
工作温度范围 (°C) Operating Temperature Range	-5~80				
使用电压范围 Voltage Range	±10%				
本体材质 Material of Body	2W:黄铜/Brass; 2S:不锈钢/Stainless steel				
油封材质 Material of Oil Seal	NBR , EPDM或VITON				

*特殊电压及特殊规格请与厂方接洽。 Please contact factory for special voltage and sepcification.

外形尺寸/Oevrral Dimension



型号 Model	L	H	D
2W040-10NO	53	105	62
2W160-10NO	66	126	62
2W160-15NO	66	126	62
2W200-20NO	70	130	62
2W250-25NO	92	139	62