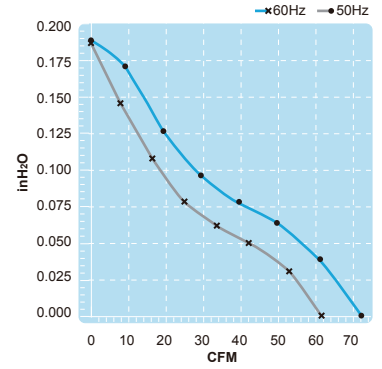
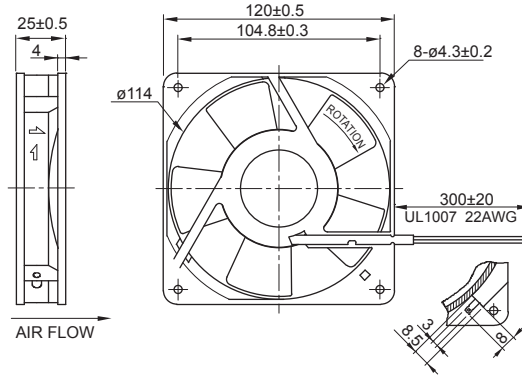
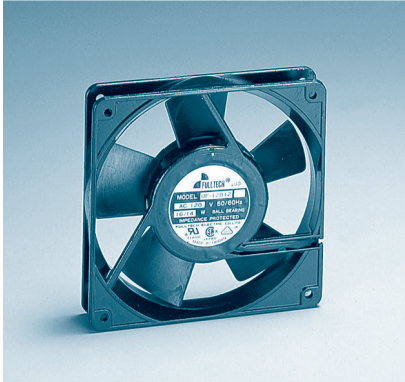


UF12B Series

Size : 120 x 120 x 25
Unit : mm



Impedance-Protected

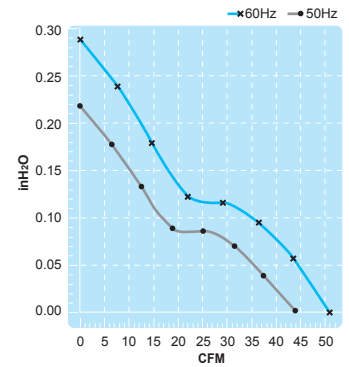
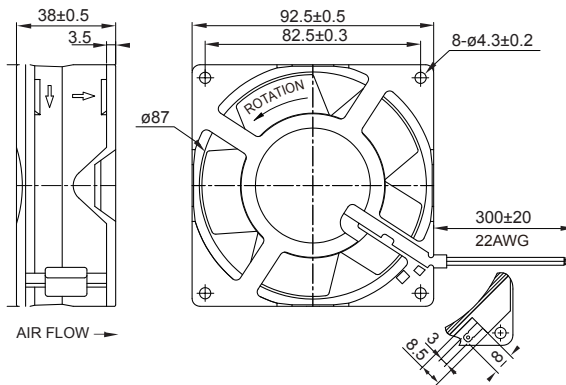
Terminal or Lead Wire Type



| Spec. | Rated Voltage | Frequency | Input Power | Rated Current | Locked Current | Speed | Maximum Air Flow | Maximum Air Flow | Maximum Pressure | Maximum Pressure | Noise | Weight |
|-----------|---------------|-----------|-------------|---------------|----------------|-------|----------------------|------------------|--------------------|----------------------|-------|--------|
| Model | V | Hz | W | A | A | RPM | m ³ /min. | CFM | mmH ₂ O | InchH ₂ O | dB | kg |
| UF12B10-H | 100 | 50 | 16 | 0.19 | 0.20 | 2400 | 1.8 | 62 | 4.7 | 0.19 | 38 | 0.33 |
| | | 60 | 14 | 0.18 | 0.19 | 2900 | 2.1 | 75 | 4.7 | 0.19 | 42 | |
| UF12B11-H | 115 | 50 | 14 | 0.15 | 0.16 | 2400 | 1.8 | 62 | 4.7 | 0.19 | 38 | 0.33 |
| | | 60 | 11 | 0.12 | 0.15 | 2900 | 2.1 | 75 | 4.7 | 0.19 | 42 | |
| UF12B20-H | 200 | 50 | 15 | 0.09 | 1.00 | 2400 | 1.8 | 62 | 4.7 | 0.19 | 38 | 0.33 |
| | | 60 | 12 | 0.07 | 0.08 | 2900 | 2.1 | 75 | 4.7 | 0.19 | 42 | |
| UF12B23-H | 230 | 50 | 16 | 0.08 | 0.09 | 2400 | 1.8 | 62 | 4.7 | 0.19 | 38 | 0.33 |
| | | 60 | 14 | 0.07 | 0.08 | 2900 | 2.1 | 75 | 4.7 | 0.19 | 42 | |
| UF12B11-L | 115 | 50 | 14 | 0.14 | 0.15 | 1600 | 1.3 | 42 | 1.8 | 0.07 | 31 | 0.33 |
| | | 60 | 11 | 0.11 | 0.12 | 2000 | 1.5 | 53 | 2.7 | 0.11 | 33 | |
| UF12B23-L | 230 | 50 | 16 | 0.07 | 0.08 | 1600 | 1.3 | 42 | 1.8 | 0.07 | 31 | 0.33 |
| | | 60 | 14 | 0.06 | 0.07 | 2000 | 1.5 | 53 | 2.7 | 0.11 | 33 | |

UF92A(M) Series

Size : 92.5 x 92.5 x 38
Unit : mm * Metal Impeller



Impedance-Protected

Terminal or Lead Wire Type



| Spec. | Rated Voltage | Frequency | Input Power | Rated Current | Locked Current | Speed | Maximum Air Flow | Maximum Air Flow | Maximum Pressure | Maximum Pressure | Noise | Weight |
|------------|---------------|-----------|-------------|---------------|----------------|-------|----------------------|------------------|--------------------|----------------------|-------|--------|
| Model | V | Hz | W | A | A | RPM | m ³ /min. | CFM | mmH ₂ O | InchH ₂ O | dB | kg |
| UF92AM10-H | 100 | 50 | 12 | 0.16 | 0.20 | 2700 | 1.25 | 44 | 6.0 | 0.24 | 37 | 0.43 |
| | | 60 | 11 | 0.15 | 0.19 | 3200 | 1.45 | 51 | 7.5 | 0.30 | 42 | |
| UF92AM11-H | 115 | 50 | 12 | 0.13 | 0.19 | 2700 | 1.25 | 44 | 6.0 | 0.24 | 37 | 0.43 |
| | | 60 | 11 | 0.11 | 0.17 | 3200 | 1.45 | 51 | 7.5 | 0.30 | 42 | |
| UF92AM20-H | 200 | 50 | 12 | 0.08 | 0.10 | 2700 | 1.25 | 44 | 6.0 | 0.24 | 37 | 0.43 |
| | | 60 | 11 | 0.07 | 0.09 | 3200 | 1.45 | 51 | 7.5 | 0.30 | 42 | |
| UF92AM23-H | 230 | 50 | 12 | 0.06 | 0.09 | 2700 | 1.25 | 44 | 6.0 | 0.24 | 37 | 0.43 |
| | | 60 | 11 | 0.05 | 0.08 | 3200 | 1.45 | 51 | 7.5 | 0.30 | 42 | |