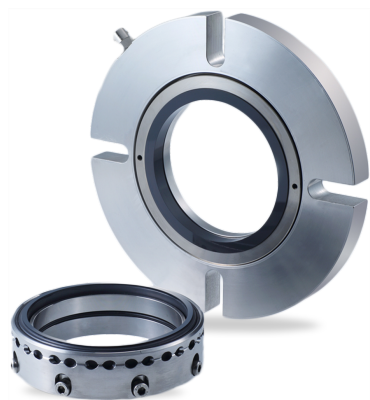


RELY ON EXCELLENCE

## SeccoMix 1

Mechanical seals | Agitator seals | Dry running seals



### Features

- For top entry drives, on request side drive possible
- Dry-running
- Single seal
- Balanced
- Outboard mounted
- Multiple springs rotating
- Independent of direction of rotation

### Advantages

- Available as semi-cartridge with or without basic flange
- Suitable for vacuum operation
- Friction-locked connection to the shaft
- ATEX certification available on request
- Inherently safe, even without temperature monitoring

### Operating range

Shaft diameter:  
 $d_1 = 25 \dots 220 \text{ mm}$  (0,98" ... 8,66")  
 Pressure:  $p_1 = \text{vacuum} \dots 6 \text{ bar}$  (87 PSI)  
 Temperature:  
 $t_1 = -20 \text{ }^{\circ}\text{C} \dots +200 \text{ (250*) }^{\circ}\text{C}$   
 $(-4 \text{ }^{\circ}\text{F} \dots 392 \text{ (482*) }^{\circ}\text{F})$   
 Sliding velocity:  $v_g = 0 \dots 2 \text{ m/s}$  (0 ... 6 ft/s)  
 Axial movement:  $\pm 1.5 \text{ mm}$   
 Radial movement:  $\pm 1.5 \text{ mm}$

For applications beyond this range, please inquire.

\* with cooling flange

! It should be noted that the extremal values of each operating parameter cannot be applied at the same time because of their interaction.

### Materials

Seal face: Carbon graphite, FDA conform  
 Seat: Silicon carbide  
 Secondary seals and metal parts according to application and customer's specifications.

### Standards and approvals

- FDA
- ATEX

### Notes

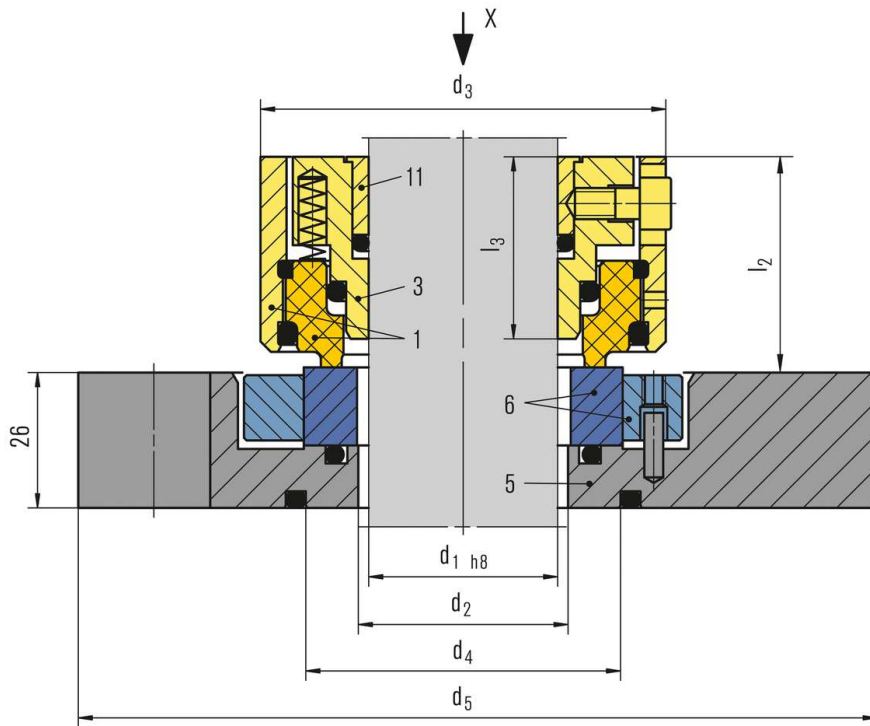
Options:

- Without flange
- Cooling resp. heating flange
- Wear trap with flush
- Wear trap with flush and cooling / heating flange

### Recommended applications

- Chemical industry
- Petrochemical industry
- Pharmaceutical industry
- Food and beverage industry
- Non-toxic media
- Agitators
- Mixers
- Reactors

## RELY ON EXCELLENCE

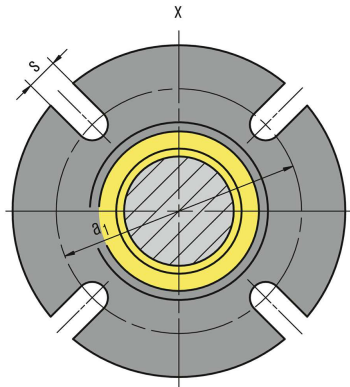


### Item Description

- |    |                                  |
|----|----------------------------------|
| 1  | Seal face with seal face housing |
| 3  | Drive collar                     |
| 5  | Flange                           |
| 6  | Seat with seat housing           |
| 11 | Clamping ring                    |

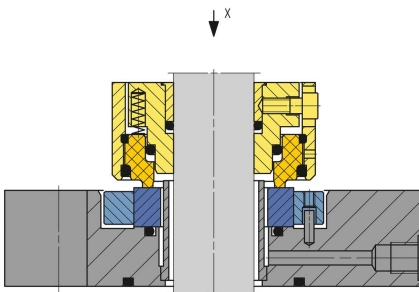
## RELY ON EXCELLENCE

### Installation, details, options



Seal flange

### Product variants



#### Seccomix 1-11

The SeccoMix 1-11 is equipped in addition with a sleeve for trapping any abraded particles from the seal face. Contamination of the medium in the container is thus ruled out. The sleeve can be cleaned through a flushing bore. Please note: diameters (d2 to d5) increase to the next possible design size.

## RELY ON EXCELLENCE

### Dimensions

| d <sub>1</sub> (mm) | d <sub>1</sub> (inch) | d <sub>2</sub> | d <sub>3</sub> | d <sub>4</sub> | d <sub>5</sub> | l <sub>2</sub> | l <sub>3</sub> | a <sub>1</sub> (min) | a <sub>1</sub> (max) | s  |
|---------------------|-----------------------|----------------|----------------|----------------|----------------|----------------|----------------|----------------------|----------------------|----|
| 25                  | 1.000                 | 34             | 68             | –              | 148            | 41.5           | 35             | 100                  | 132                  | 11 |
| 28                  | 1.125                 | 34             | 68             | 55             | 148            | 41.5           | 35             | 100                  | 132                  | 11 |
| 30                  | –                     | 34             | 68             | 55             | 148            | 41.5           | 35             | 100                  | 132                  | 11 |
| 32                  | 1.250                 | 39             | 73             | 60             | 153            | 41.5           | 35             | 105                  | 137                  | 11 |
| 35                  | 1.375                 | 39             | 73             | 60             | 153            | 41.5           | 35             | 105                  | 137                  | 11 |
| 38                  | 1.500                 | 44             | 78             | 65             | 158            | 41.5           | 35             | 110                  | 142                  | 11 |
| 40                  | –                     | 44             | 78             | 65             | 158            | 41.5           | 35             | 110                  | 142                  | 11 |
| 45                  | 1.625                 | 49             | 83             | 68             | 163            | 41.5           | 35             | 115                  | 152                  | 11 |
| –                   | 1.750                 | 49             | 83             | 68             | 163            | 41.5           | 35             | 115                  | 152                  | 11 |
| 48                  | 1.875                 | 54             | 88             | 73             | 178            | 41.5           | 35             | 125                  | 160                  | 14 |
| 50                  | –                     | 54             | 88             | 73             | 178            | 41.5           | 35             | 125                  | 160                  | 14 |
| 55                  | 2.000                 | 59             | 93             | 78             | 183            | 41.5           | 35             | 130                  | 165                  | 14 |
| –                   | 2.125                 | 59             | 93             | 78             | 183            | 41.5           | 35             | 130                  | 165                  | 14 |
| 60                  | 2.250                 | 64             | 98             | 85             | 188            | 41.5           | 35             | 135                  | 170                  | 14 |
| 65                  | 2.375                 | 69             | 103            | 90             | 193            | 44.5           | 35             | 140                  | 175                  | 14 |
| –                   | 2.500                 | 69             | 103            | 90             | 193            | 44.5           | 35             | 140                  | 175                  | 14 |
| 70                  | 2.625                 | 74             | 108            | 95             | 198            | 44.5           | 38             | 145                  | 180                  | 14 |
| –                   | 2.750                 | 74             | 108            | 95             | 198            | 44.5           | 38             | 145                  | 180                  | 14 |
| 75                  | 2.875                 | 79             | 113            | 100            | 203            | 44.5           | 38             | 150                  | 185                  | 14 |
| 80                  | 3.000                 | 84             | 118            | 105            | 208            | 44.5           | 38             | 155                  | 190                  | 14 |
| 85                  | 3.250                 | 89             | 123            | 110            | 213            | 44.5           | 38             | 160                  | 195                  | 14 |
| 90                  | 3.500                 | 94             | 128            | 115            | 218            | 44.5           | 38             | 165                  | 200                  | 14 |
| 95                  | 3.750                 | 99             | 133            | 120            | 223            | 44.5           | 38             | 170                  | 205                  | 14 |
| 100                 | –                     | 104            | 138            | 125            | 228            | 44.5           | 38             | 175                  | 210                  | 14 |
| 105                 | 4.000                 | 109            | 143            | 130            | 233            | 44.5           | 38             | 180                  | 215                  | 14 |
| 110                 | 4.250                 | 114            | 148            | 135            | 238            | 44.5           | 38             | 185                  | 220                  | 14 |
| 115                 | 4.500                 | 119            | 153            | 140            | 267            | 44.5           | 38             | 196                  | 243                  | 18 |
| 125                 | 4.750                 | 129            | 163            | 150            | 277            | 44.5           | 38             | 206                  | 253                  | 18 |
| 140                 | 5.000                 | 144            | 178            | 165            | 297            | 44.5           | 38             | 221                  | 273                  | 18 |
| –                   | 5.250                 | 144            | 178            | 165            | 297            | 44.5           | 38             | 221                  | 273                  | 18 |
| –                   | 5.500                 | 144            | 178            | 165            | 297            | 44.5           | 38             | 221                  | 273                  | 18 |
| 150                 | 5.750                 | 154            | 188            | 175            | 307            | 44.5           | 38             | 231                  | 283                  | 18 |
| 160                 | 6.000                 | 164            | 198            | 185            | 317            | 44.5           | 38             | 241                  | 293                  | 18 |
| –                   | 6.250                 | 164            | 198            | 185            | 317            | 44.5           | 38             | 241                  | 293                  | 18 |

SeccoMix 1 - Dimensions in millimeter