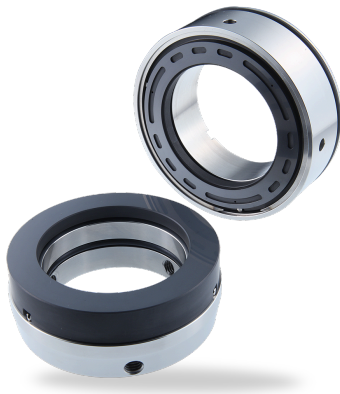


RELY ON EXCELLENCE

## EM300

Mechanical seals | Mechanical seals for pumps | Gas-lubricated seals



### Advantages

- Dry contact secondary seal
- Prevention of hazardous emissions
- Can be used as a secondary seal of tandem seal in liquid applications

### Operating range

Pressure:  $p = 2$  bar (29 PSI) normal operation, max. 60 bar (870 PSI)

Temperature:

$t = -20$  °C ...  $+200$  °C ( $-4$  °F ...  $+392$  °F)

Sliding velocity:  $v_g = 25$  m/s (82 ft/s)

### Materials

Seal face: Special carbon

Seat: Silicon carbide (Q1, Q2)

Secondary seals: FKM (V)

Metal parts: CrNiMo steel (G)

### Standards and approvals

- API 682 / ISO 21049

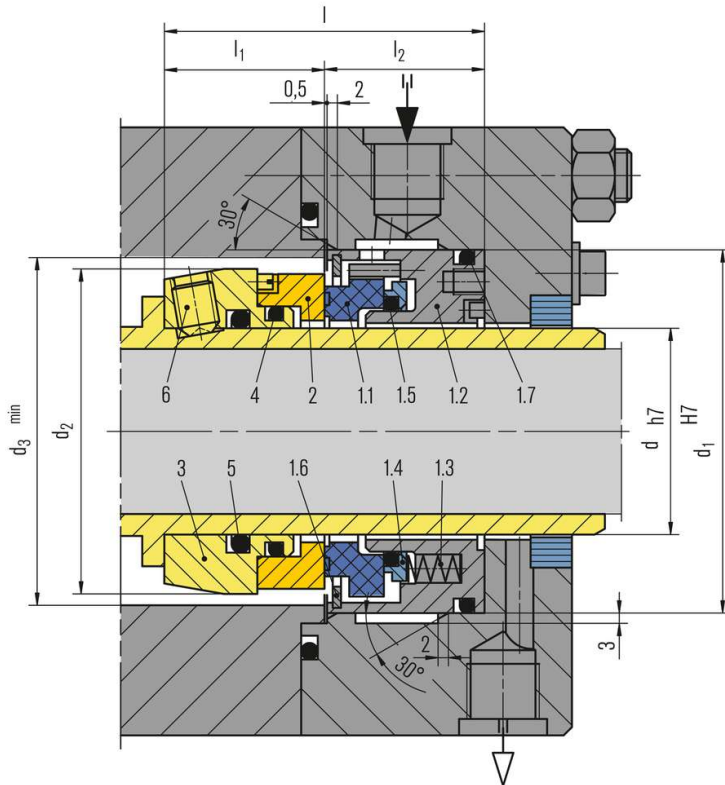
### Recommended applications

- Chemical industry
- Refining technology

### Features

- Balanced
- Independent of direction of rotation
- Stationary multiple springs
- API682 arrangement 2 containment seal

RELY ON EXCELLENCE



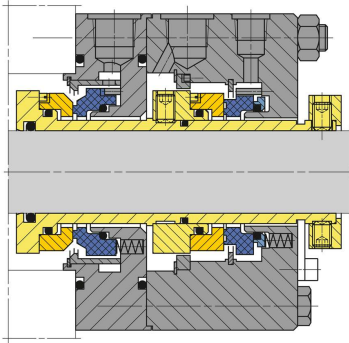
**Item Description**

- 1.1 Seal face
- 1.2 Adapter
- 1.3 Spring
- 1.4 Thrust ring
- 1.5 O-Ring
- 1.6 Retaining ring
- 1.7 O-Ring
- 2 Seat
- 3 Drive collar
- 4 O-Ring
- 5 O-Ring
- 6 Set screw

## RELY ON EXCELLENCE

### Product variants

**Configuration example**  
acc. to API 682 (2CW-CS)



### Dimensions

d <sub>max.</sub>	d <sub>1</sub>	d <sub>2</sub>	d <sub>3</sub>	l	l <sub>1</sub>	l <sub>2</sub>
20	50	40	46	56	27	29
25	54	46	52	56	27	29
30	60	51	57	56	27	29
35	64	56	62	56	27	29
40	72	63	69	62	31	31
45	76	68	74	62	31	31
50	85	76	82	66	33	33
55	90	82	88	66	33	33
60	100	90	96	66	33	33
65	105	93	99	66	33	33
70	110	99	105	66	33	33
75	115	104	110	66	33	33
80	120	111	117	68	35	33
85	127	117	123	68	35	33
90	132	120	126	68	35	33
95	140	129	135	68	35	33
100	145	132	138	68	35	33

Dimensions in millimeter