

迷你型隔膜阀-非常灵活的各种组合

Mini-type diaphragm valve-Flexible various combinations

DONJOY创新设计 专利保护

执行机构 Actuator



不锈钢手动 Stainless steel hand wheel



塑料手动 Plastic hand wheel



手动阀盖 Manual valve cover



多功能双工位气动执行器
Multifunctional double-station
pneumatic actuator



不锈钢执行器
Stainless steel actuator



塑料执行器
Plastic actuator



不锈钢执行器
Stainless steel actuator

膜片 Gasket



PTFE+EPDM



EPDM / FPM

阀体 Body



适用规格: DN6-DN20, 1/4"-3/4"
Applicable specifications: DN6-DN20, 1/4"-3/4"

迷你型隔膜阀

Mini-type diaphragm valve



不锈钢气动隔膜阀
Stainless steel pneumatic

2015款不锈钢气动隔膜阀
2015 TYPE Stainless steel pneumatic



不锈钢气动隔膜阀
Stainless steel pneumatic diaphragm valve

迷你型气动隔膜阀

- ◆ SIZE: 1/4" - 3/4", DN6 - DN15
- ◆ 最高温度: -30到150℃ (双层膜片 EPDM+PTFE)
- ◆ 最高温度: -30到130℃ (单层橡胶膜片EPDM)
(其他材质, 满足更高温)
- ◆ 最高压力: 单向 (DELTA P=100%)
常闭橡胶8bar, PTFE 6bar (选项)
常闭橡胶6bar, PTFE 4.5bar (标准)
常开和双作用橡胶8bar, PTFE 6bar
- ◆ 换装不同的执行器可以满足更高压力等级
- ◆ 锻造阀体: 1.4404/316L ASME BPE/1.4435 Nb2 Fe<0.5%
- ◆ 铸造阀体: 1.4404/316L
- ◆ 连接方式: 焊接、卡箍、法兰、螺纹
- ◆ 气动执行器适用于阀体: 直通、三通、多通道阀体、焊接组合阀体、罐底阀

Mini-type pneumatic diaphragm valve

- ◆ SIZE: 1/4" - 3/4", DN6 - DN15
- ◆ Max temperature: - 30 to 150 °C (depending on diaphragm)
(stainless steel actuator)
- ◆ Max temperature: - 30 to 130 °C (depending on diaphragm)
(plastic actuator)
- ◆ Max pressure: one way (DELTA P = 100%)
Normally close EPDM 8 bar, PTFE 6 bar (option)
Normally close EPDM 6 bar, PTFE 4.5 bar (standard)
Normally open and double action EPDM 8 bar, PTFE 6 bar
- ◆ Assemble different actuators can meet the higher pressure rating
- ◆ Forging body: 1.4404/316 L ASME BPE/1.4435 Nb2 Fe<0.5%
- ◆ Casting body: 1.4404/316 L
- ◆ Connection: welding, clamp, flange, thread
- ◆ Pneumatic actuator suitable for body: straight, tee, multichannel body, welding combination valve, tank bottom valve



塑料气动隔膜阀
Plastic pneumatic

铝合金气动隔膜阀
Aluminum pneumatic



不锈钢/塑料手轮隔膜阀
Diaphragm Valve with Stainless Steel/Plastic Hand Wheel

迷你多功能罐装隔膜阀

Mini multi-function canned diaphragm valve

技术特点 Technical characteristics

具有高效率、高精度罐装，物料零溢出，超长寿命(压力2bar高达800万次)，流量可调节，双工位气缸设计。

Zero overflow with high efficiency and high precision canning, materials, long life (2 bar pressure up to 8 million times), flow adjustable, double cylinder design.

SIZE: DN6-DN15, 1/4"-3/4"

材质: ASME BPE 316L, 1.4404

1.4435 NB2 Fe < 0.5%

阀体: 直通、三通、多通、U型三通、卡箍、焊接、螺纹、法兰等
执行标准: DIN11866 DIN11850, ASME BPE ASME A269

SIZE: DN6 - DN15, 1/4" - 3/4"

Material: 316 I ASME BPE, 1.4404

1.4435 NB2 Fe < 0.5%

The body straight, tee, communication, u-shaped tee, clamp, welding, thread, flange, etc

Execution standard: DIN11866 DIN11850, ASME BPE ASME A269



工作原理 Working principle

该隔膜阀具有双工位气缸，流量可调式的灌装阀门。

对于要求快速灌装且杜绝物料外溢或溅出灌装瓶。

1#气缸工作时流量为最大；

2#气缸工作时流量为最小，也可通过流量调节装置，调节2#气缸工作时的流量。

The diaphragm valve has a double location cylinder, flow adjustable filling valve. For rapid filling and prevent spillover or spatter material filling bottles.

1 # cylinder work flow as the largest;

2 # cylinder work flow to a minimum, also can through flow control device, regulating the flow of 2 # cylinder at work.

建议设置 Suggest setting

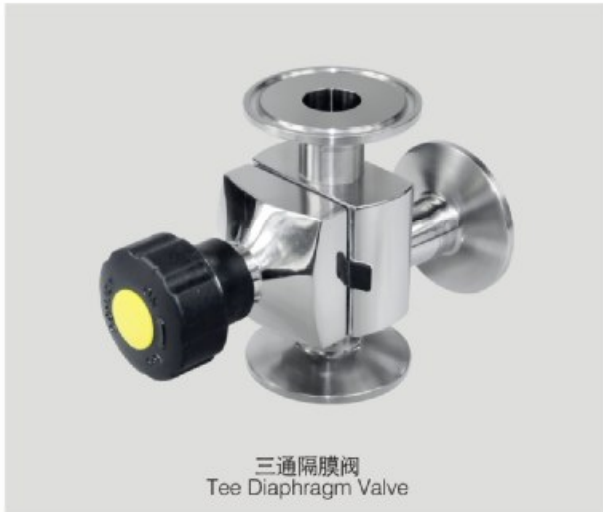
1#气缸开启液体灌装至70%—80%液位时关闭，2#气缸开启灌装至合理的液位。

1 # open cylinder filling liquid level to 70% - 80% when closed, open 2 # cylinder filling to a reasonable level.



迷你型隔膜阀

Mini-type diaphragm valve



三通隔膜阀
Tee Diaphragm Valve

迷你型隔膜阀

Mini-type diaphragm valve

- ◆ SIZE: 1/4"-3/4"
- ◆ 最高温度: -30到150°C(取决于膜片)
- ◆ 最高压力: 10bar/146PSI
- ◆ 手动适用于阀体: T型三通/L型三通/直通/多通道
- ◆ SIZE: 1/4" - 3/4"
- ◆ Max temperature: - 30 to 150 °C (depending on diaphragm)
- ◆ Max pressure: 10 bar / 146 psi
- ◆ Manual applies to body: T port/L port/direct-way/multiport



多通隔膜阀
4个通道, 3个控制阀
Multiport Diaphragm Valve
Four ports, three control valves



三通隔膜阀
Tee Diaphragm Valve



三通隔膜阀
3个通道, 2个控制阀
Tee Diaphragm Valve
Three ports, two control valves

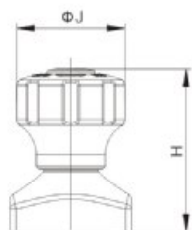


U型三通隔膜阀
U Type Tee
Diaphragm Valve

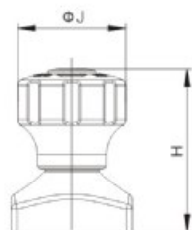
迷你型隔膜阀 Mini-type diaphragm valve



微型执行机构Micro actuators



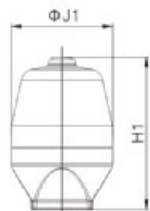
塑料手动
Plastic Hand Wheel
NO.MINI-VGM0S2



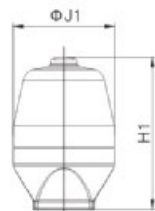
不锈钢手动
Stainless Steel Hand Wheel
NO.MINI-VGM0S1



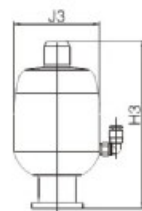
气动双工位气动(灌装阀)
Pneumatic double location (filling valve)
NO.MINI-VGM0Q3



塑料气动
Plastic Actuator
NO.MINI-VGM0Q2



不锈钢气动
Stainless Steel Actuator
NO.MINI-VGM0Q1



不锈钢气动-2015款
Stainless Steel Actuator
NO.MINI-VGM0Q4

DIN32676/DIN11850-1/2

SIZE	J	J1	J2	J3	H	H1	H2	H3
DN6	38	60	54	60	57	104	116	118
DN8	38	60	54	60	57	104	116	118
DN10	38	60	54	60	57	104	116	118
DN15	38	60	54	60	57	104	116	118

ASME BPE/ASTM 269

SIZE	J	J1	J2	J3
1/4"	38	60	54	60
3/8"	38	60	54	60
1/2"	38	60	54	60
3/4"	38	60	54	60

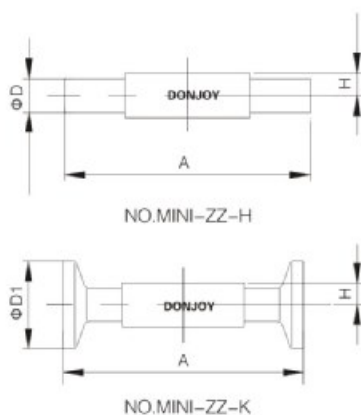
SIZE	H	H1	H2	H3
1/4"	57	104	116	118
3/8"	57	104	116	118
1/2"	57	104	116	118
3/4"	57	104	116	118

迷你型隔膜阀

Mini-type diaphragm valve

微型阀体 Tiny body

直通阀体 腔体比值 $\leq 3D$



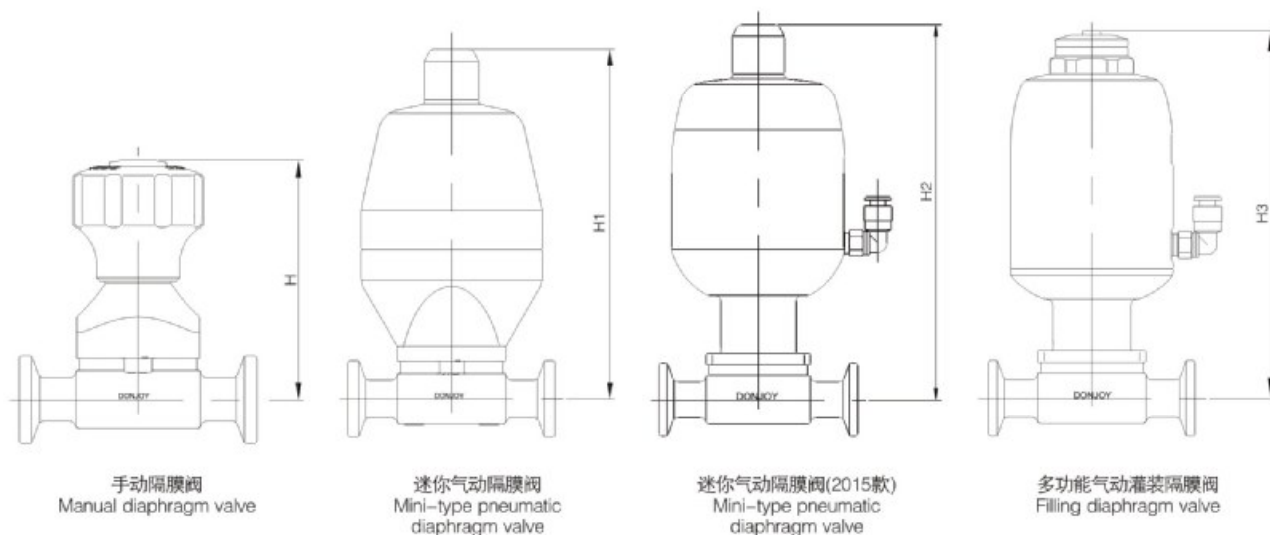
DIN32676/DIN11850-1/2

SIZE	D	D1	A	H
DN6	8	25.4/34	68.6	5.5
DN8	10	25.4/34	68.6	7
DN10	12/13	25.4/34	68.6	8.5
DN15	18/19	25.4/34	85	12

ASME BPE/ASTM 269

SIZE	D	D1	A	H
1/4"	6.35	25.4	68.6	5.5
3/8"	9.5	25.4	68.6	7
1/2"	12.7	25.4	68.6	8.5
3/4"	19	25.4/50.5	85	12

迷你隔膜阀 Mini diaphragm valve



手动隔膜阀
Manual diaphragm valve

迷你气动隔膜阀
Mini-type pneumatic diaphragm valve

迷你气动隔膜阀(2015款)
Mini-type pneumatic diaphragm valve

多功能气动灌装隔膜阀
Filling diaphragm valve

SIZE		H	H1	H2	H3
1/4"	DN6	69	116	130	128
3/8"	DN8	69	116	130	130
1/2"	DN10	69	116	130	128
3/4"	DN15	72	119	133	130