

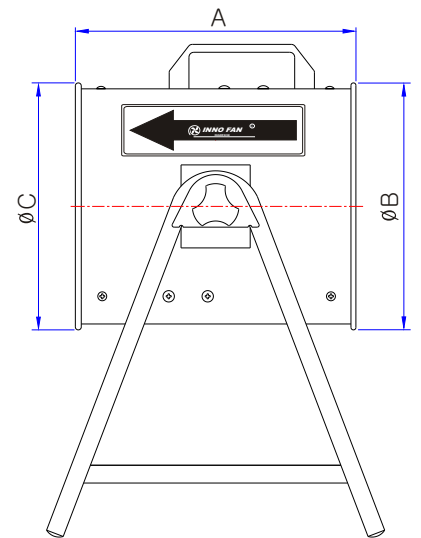
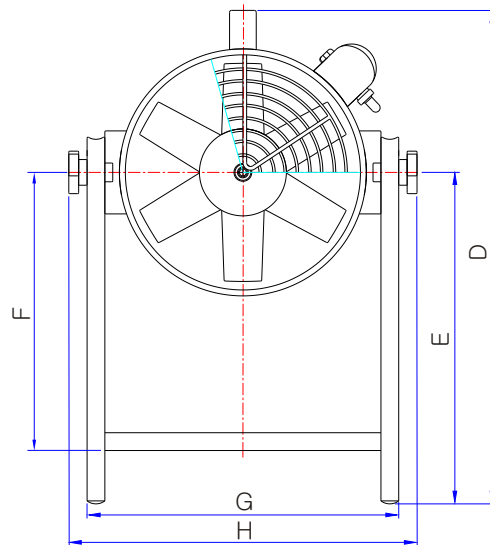
배풍기

Portable Fans



TIP-250S-1
TIP-300S-1

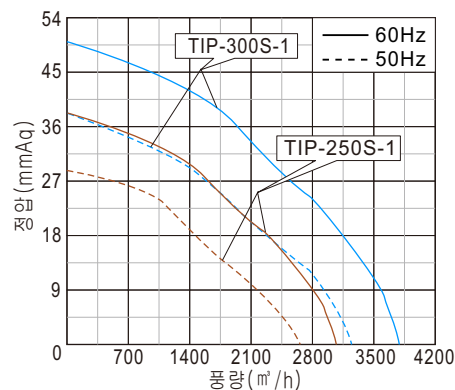
도면(Unit: mm)



(Unit: mm)

Model	A	B	C	D	E	F	G	H
TIP-250S-1	284	250	250	499	336	282	315	352
TIP-300S-1	312	298	298	551	350	273	371	406

성능곡선



모델 Model	전원 Source (ϕ / V/Hz)	날개크기 Impeller Size (mm)	전류 Current (A)	극수 Pole (P)	소비전력 Input (W)	최대풍량 Air Volume (m³/h)	최대정압 Air Pressure (mmAq)	회전수 Rated Speed (rpm)	중량 Weight (Kg)
TIP-250S-1	1/220/60	ø220	1.6	2	320	3,060	38	3,410	8.4
	1/220/50		1.2		230	2,660	29	2,950	
TIP-300S-1	1/220/60	ø270	2.2	2	450	3,780	50	3,300	11.1
	1/220/50		1.4		295	3,280	38	2,850	

※본 제품의 사양은 품질개선을 위하여 예고없이 변경되는 경우가 있습니다.