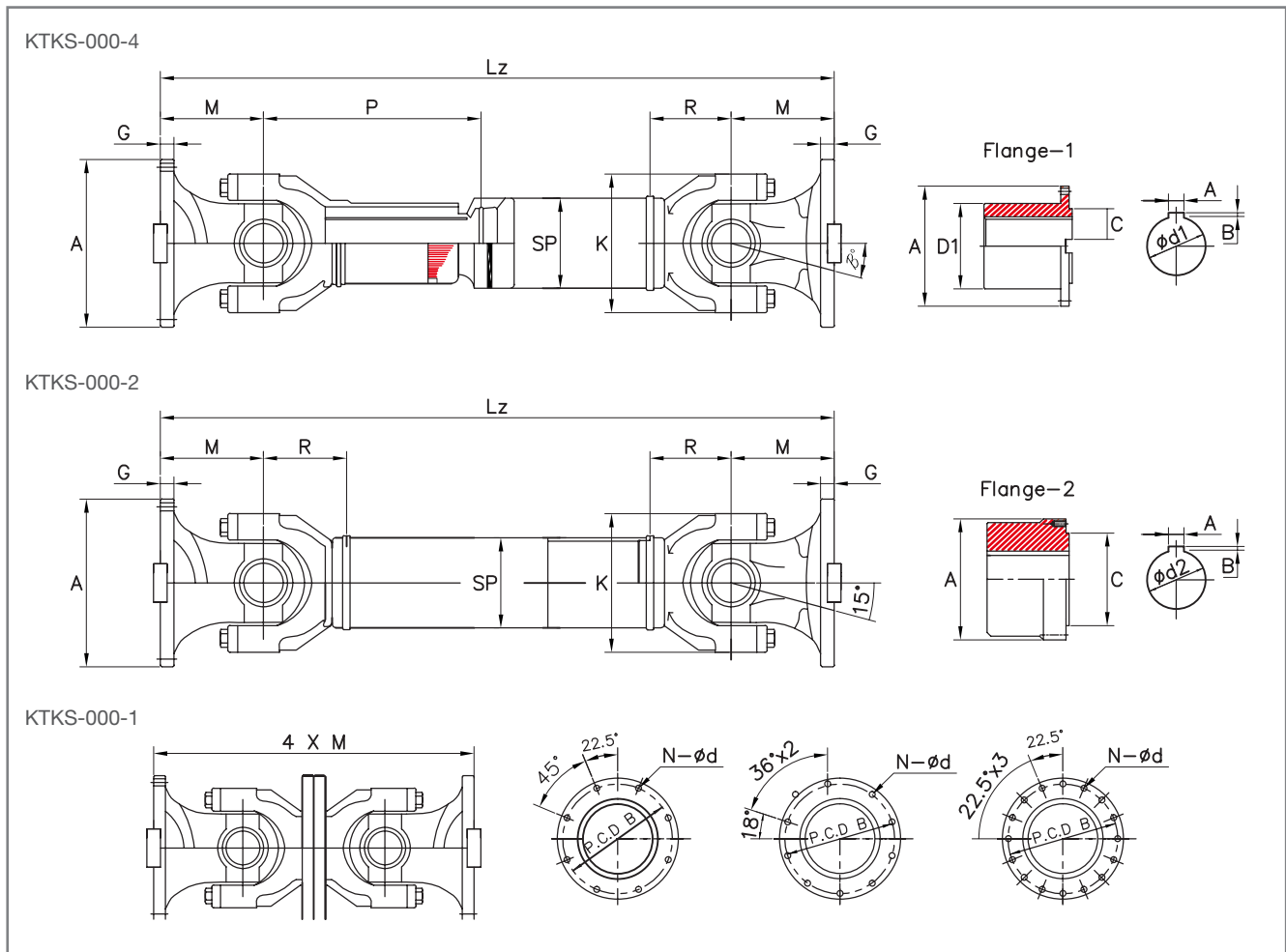


KTKS Type



Size	Din	Torque		Angle	Dimensions (Millimeters)																Length	Spline Stroke	Flange			Bolt Size
		TDW (Kgf.m)	TK (Kgf.m)	B°	A	B PCD	øC H7	F	G	M	P	R	SP	ØS	ØK	N	Ød	X	Y	LZ Min			+	ød1	øD	
200	-	1,850	2,405	10°	200	172	95	5	20	135	420	160	100	140.0	200	8	15.5	40	10.0	850	80	70	130	105	M16 x 60L	
225	192.50	1,850	4,400	10°	215	196	105	5	20	135	475	175	100	152.0	225	8	17.5	32	9.0	965	85	90	160	135	M16 x 60L	
250	192.55	2,600	3,380	10°	250	218	105	6	25	135	590	190	100	170.0	250	8	19.5	40	12.5	1,035	90	100	180	150	M18 x 75L	
285	192.60	3,800	4,940	10°	285	245	125	7	27	150	610	210	130	200.0	285	8	20.0	40	15.0	1,180	120	110	200	165	M20 x 80L	
315	192.65	5,500	7,150	10°	315	280	130	7	32	170	740	240	150	230.0	315	10	22.0	40	15.0	1,375	135	120	215	180	M22 x 90L	
350	192.70	8,000	10,400	10°	350	310	155	8	35	185	760	260	170	245.0	350	10	22.0	50	16.0	1,485	150	130	240	195	M22 x 100L	
390	192.75	11,000	14,300	10°	390	345	170	8	40	205	880	280	170	273.0	390	10	24.0	70	18.0	1,620	150	140	270	210	M24 x 110L	
435	192.80	15,000	19,500	10°	435	385	190	10	42	235	930	330	209	318.0	435	10	27.0	80	20.0	1,795	170	150	300	225	M27 x 120L	
480	192.85	20,000	26,000	10°	480	425	205	12	47	265	1,035	305	209	355.6	480	16	31.5	90	22.5	1,950	190	165	365	250	M30 x 130L	
550	192.90	28,000	36,400	10°	550	492	250	12	50	290	1,110	350	240	406.4	550	16	31.5	100	22.5	2,120	210	220	430	330	M30 x 135L	

* Coupling Weight is without Bore Machining