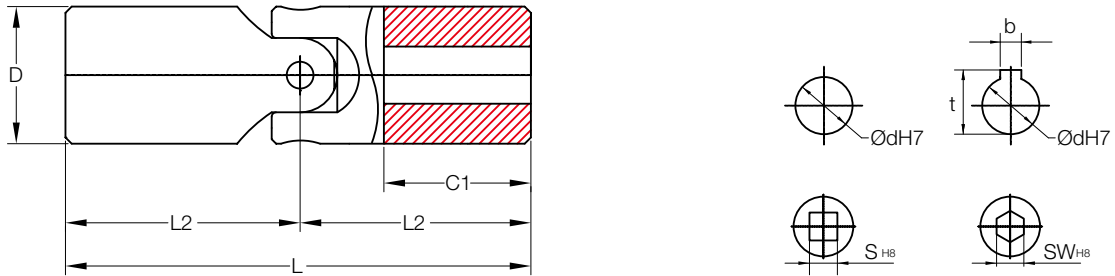
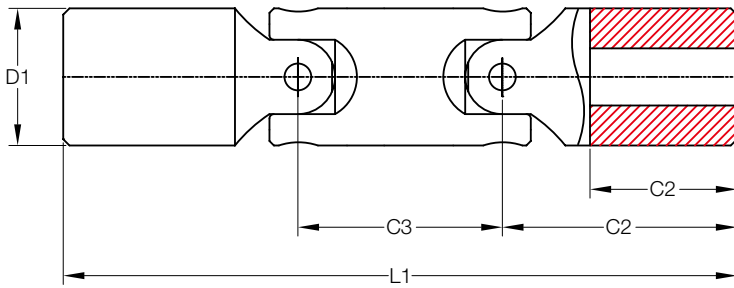


KL & KLD Type

KL Type (Single)



KLD Type (Double)



KL Type Single Size	KLD Type Double Size	Dimensions (Millimeters)										
		dH7	D	D1	L	L1	C1	C2	C3	S	SW	BXT
100	-	5	10	-	40	-	13	-	-	-	-	-
101	-	6	13	-	40	-	13	-	-	6	-	-
102	-	8	16	-	40	-	10	-	-	8	-	2 x 9
103	-	10	20	-	62	-	19	-	-	10	10	3 x 11.4
104	104	12	25	25	74	86	23	19	33	12	12	4 x 13.8
105	105	14	29	25	74	95	23	21	33	14	14	5 x 16.3
106	106	16	32	32	86	104	26	21	35	16	16	5 x 18.3
107	107	18	37	37	120	180	41	54	39	18	18	6 x 20.8
108	108	20	40	40	108	128	32	21	46	20	20	6 x 22.8
109	109	22	47	47	130	200	41	54	46	22	-	6 x 24.8
110	110	25	50	50	132	163	41	25	59	25	25	8 x 28.3
111	111	30	58	58	166	182	52	30	66	30	30	8 x 33.8
112	112	35	70	70	140/200	212/310	35/65	30/79	78			
113	113	40	80	80	160/228	245/350	42/76	38/90	95			
114	114	50	95	95	190/270	290/426	54/94	50/118	120			

* Coupling Weight is without Bore Machining