

由任视镜+照明 Union-type-sight-galss+ lighting

技术特点 Technical features

- ◆压力：真空-10bar
- ◆温度：-10°C至150°C，由任+照明-10°C至80°C
- ◆材质：304(1.4301) 316L(1.4404)

- ◆Pressure: Vacuum 10bar
- ◆Temperature: -10°C to 150°C, Union+lighting-10°C to 80°C
- ◆Materials: 304(1.4301) 316L(1.4404)



由任视镜+照明+刮尘
Union sight glass + lighting + scraper

- ◆DN80-DN150, 4"-6"
- ◆一次充电使用2-3个月
(根据使用频率而定)
- ◆AC220V/110V
- ◆防水、防爆、卫生设计
- ◆DN80-DN150, 4"-6"
- ◆One charge can be used for 2-3 months
(depending on frequency of use)
- ◆AC220V/110V
- ◆Waterproof, explosion-proof,
hygienic design



由任视镜+照明
Union sight glass+ Lighting

- ◆DN65-DN150, 3"-6"
- ◆一次充电使用2-3个月
(根据使用频率而定)
- ◆AC220V/110V
- ◆防水、防爆、卫生设计
- ◆DN65-DN150, 3"-6"
- ◆One charge can be used for 2-3 months
(depending on frequency of use)
- ◆AC220V/110V
- ◆Waterproof, explosion-proof,
hygienic design



由任视镜+照明+刮尘
Union sight glass + Stainless
steel lighting +The wiper

- ◆DN80-DN150, 4"-6"
- ◆供电DC24V
- ◆防水、卫生设计
- ◆预制电缆2M
- ◆预制针孔插头
- ◆DN80-DN150, 4"-6"
- ◆Powered DC24V
- ◆Waterproof hygienic design
- ◆Precast cable 2M
- ◆Precast pinhole plugs



由任视镜+不锈钢照明
union sight glass + stainless
steel lighting

- ◆DN65-DN150, 3"-6"
- ◆供电DC24V
- ◆防水、卫生设计
- ◆预制电缆2M
- ◆预制针孔插头
- ◆DN65-DN150, 3"-6"
- ◆Powered DC24V
- ◆Waterproof hygienic design
- ◆Precast cable 2M
- ◆Precast pinhole plugs



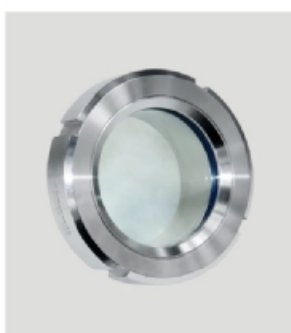
由任视镜+无电缆照明+刮尘
Union sight glass illumination +
without cable lighting+The wiper

- ◆DN80-DN150, 4"-6"
- ◆5号干电池A/A/1.5V
- ◆DN80-DN150, 4"-6"
- ◆No.5 battery A / A / 1.5V



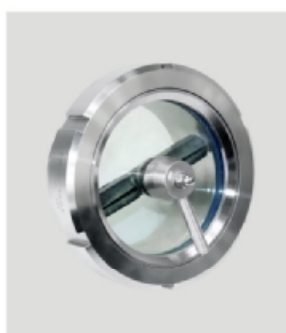
由任视镜+无电缆照明
union sight glass + without
cable lighting

- ◆DN65-DN150, 3"-6"
- ◆5号干电池A/A/1.5V
- ◆DN65-DN150, 3"-6"
- ◆No.5 battery A / A / 1.5V



基本由任视镜
Basic union sight glass

- ◆DN25-DN150, 1"-6"
- ◆材质：304/316L
- ◆DN25-DN150, 1"-6"
- ◆Material: 304 / 316L



由任视镜+刮尘
Sight glass + The wiper

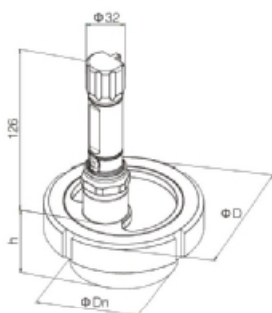
- ◆DN50-DN150, 2"-6"

由任视镜 Union-type-sight-galss

由任视镜+充电照明
sight glass Rechargeable Lighting

供电: AC220V/110V
一次充电可使用2-3个月
(使用频率而定)

Powered: AC220V/110V
On a single charge be used for
2-3 months (depending on
frequency of use)

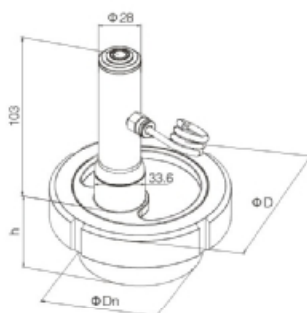


NO.VSJ302N1

由任视镜+不锈钢照明
sight glass + stainless steel lighting

DC24V
预制电缆2M
预制针孔插头 (选项)

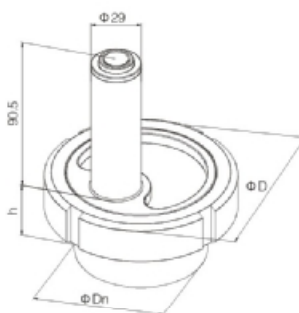
DC24V
Precast cable 2M
Precast pinhole plugs (option)



NO.VSJ303N1
由任视镜+照明

由任视镜+不锈钢照明
sight glass + stainless steel lighting

5号干电池
5 battery

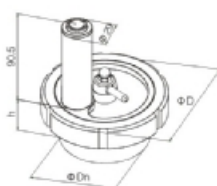


NO.VSJ301N1
由任视镜+照明

由任视镜+充电照明+刮尘
sight glass Rechargeable
Lighting+The wiper

供电: AC220V/110V
一次充电可使用2-3个月
(使用频率而定)

Powered: AC220V/110V
On a single charge be
used for 2-3 months
(depending on frequency
of use)

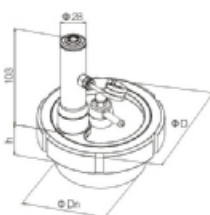


NO.VSJ301Y1

由任视镜+不锈钢照明+刮尘
sight glass + stainless steel
lighting+The wiper

DC24V
预制电缆2M
预制针孔插头 (选项)

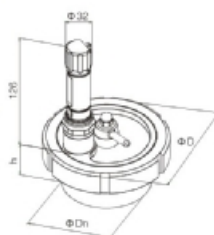
DC24V
Precast cable 2M
Precast pinhole plugs (option)



NO.VSJ303Y1

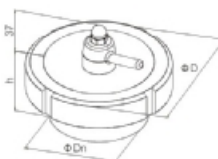
由任视镜+不锈钢照明+刮尘
sight glass + stainless steel
lighting+The wiper

5号干电池
5 battery

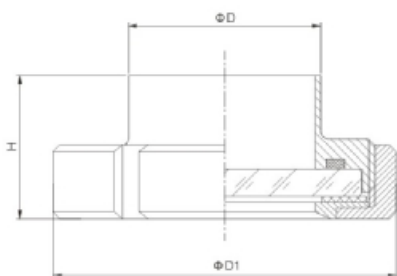


NO.VSJ302Y1

由任视镜+刮尘
sight glass + The wiper



NO.VSJ300Y1



NO.VSJ300N1

DIN

SIZE	D	D1	H
DN25	28	63	26.5
DN32	34	70	26
DN40	40	78	26
DN50	52	92	28
DN65	70	110	29
DN80	85	125	32
DN100	104	146	36
DN125	129	178	40
DN150	154	210	46

INCH

SIZE	D	D1	H
1"	25.4	50	24.5
1 1/4"	31.8	60	26
1 1/2"	38.1	72	28
2"	50.8	82	28
2 1/2"	63.5	97	32
3"	76.2	111	32
3 1/2"	89.0	118	33
4"	101.6	138	36
6"	152.4	210	45

DIN

SIZE	D	Dn	h
DN50*	92	55	38
DN65	110	72	44
DN80	125	87	49
DN100	146	106	57
DN125	178	132	52
DN150	210	157	53

INCH

SIZE	D	Dn	h
2"	92	50.8	30
2.5"	110	63.5	30
3"	125	76.2	33
4"	146	101.6	34
-	-	-	-
6"	210	152.4	53

注意: 带 "*" 只适用于由任视镜+不锈钢外壳
照明, 使5号干电池
Note: Above size with "*" only suitable for
union-type sight glass with SS lighting(NO.5 battery)

DIN

SIZE	D	Dn	h
DN50*	92	55	45
DN65*	110	72	48
DN80	125	87	53
DN100	146	106	63
DN125	178	132	57
DN150	210	157	62

INCH

SIZE	D	Dn	h
2"	92	50.8	33
2.5"	110	63.5	37
3"	125	76.2	37
4"	146	101.6	40
-	-	-	-
6"	210	152.4	62

注意: 带 "*" 只适用于由任视镜+刮尘
Note: Above size with "*" only
suitable for union-type sight glass with wi per