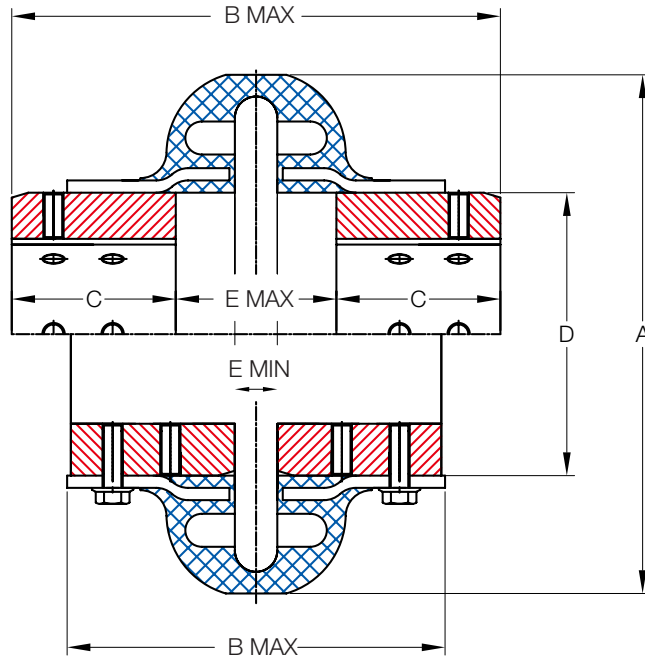


## KF Type

### Standard Type



Size	Torque Rating (Nm)	Allow Speed RPM	Cplg Weight (Kg)	Max Bore (mm)	Min Bore (mm)	Dimensions (Millimeters)						
						A	B		C	D	E	
							Max	Min			Max	Min
110	64	5,400	0.474	38	10	110	128	96	38	60	52	8
125	106	5,400	0.550	48	10	120	130	97	38	70	52	8
130	170	5,100	0.700	55	11	131	131	95	41	80	49	7
150	256	4,800	1.020	65	11	150	159	111	51	95	57	9
170	312	4,800	1.196	65	11	168	159	111	51	95	57	9
190	420	4,600	1.526	75	19	190	161	113	52	117	57	7
215	670	4,300	2.506	80	19	216	192	132	64	140	64	11
245	970	4,100	3.080	95	19	245	203	136	65	171	73	8
290	1,450	3,900	4.500	110	27	290	240	154	73	215	94	8
365	3,300	3,600	11.800	127	35	365	311	200	90	235	131	20
425	5,700	2,000	14.800	155	35	425	361	247	114	286	133	19
460	6,400	2,000	17.200	165	48	460	380	267	124	302	132	19

\* Coupling Weight is without Bore Machining