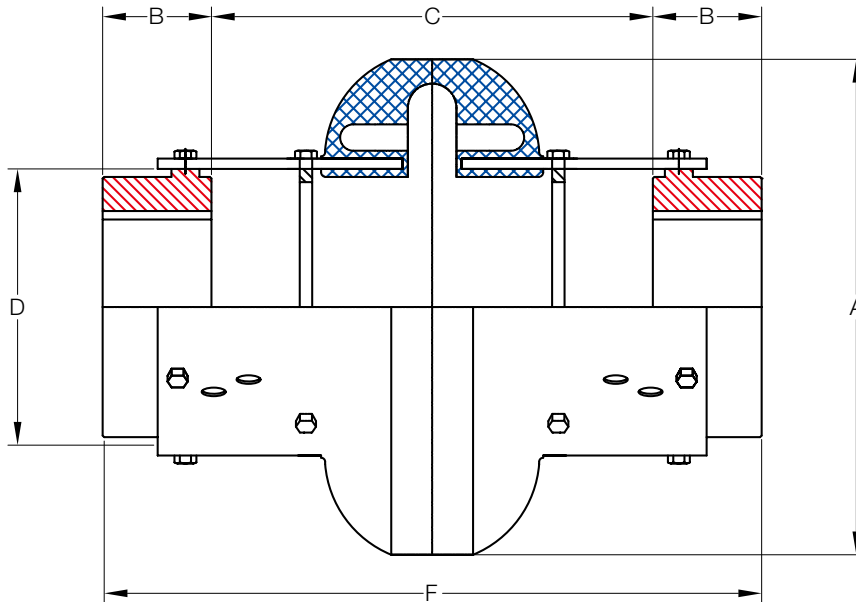


## KDS Type

### Spacer Type



Size	Torque Rating (Nm)	Allow Speed RPM	Power Rating (kW)	Cplg Weight (Kg)	Max Bore (mm)	Min Bore (mm)	Dimensions (Millimeters)						
							A	B	C (Gap)		D	F	
									In	Out		In	Out
2	21.5	7,500	0.0023	1.0	28	13	89	24	91	100	47	146	149
3	41.2	7,500	0.0043	1.8	34	13	102	37	85	140	59	184	216
4	62.0	7,500	0.0066	2.3	42	13	116	37	85	140	66	184	216
5	104.5	7,500	0.0110	3.4	48	13	137	45	89	140	80	184	228
10	163.8	7,500	0.0170	4.7	55	13	162	45	89	140	93	184	228
20	260.0	4,800	0.0270	7.1	60	21	184	50	67	180	114	238	280
30	412.0	4,200	0.0430	11.4	75	21	210	56	54	180	138	238	293
40	622.0	3,600	0.0660	18.2	85	26	241	61	41	180	168	238	307
50	864.0	3,100	0.0900	27.3	90	26	279	69	28	180	207	238	319
60	1,412.0	2,800	0.1480	38.2	105	31	318	80	66	250	222	318	415
70	2,486.0	2,600	0.2620	46.4	120	31	356	85	59	250	235	318	421
80	4,463.0	1,800	0.4670	81.8	155	31	406	114	37	250	286	318	478

\* Coupling Weight is without Bore Machining