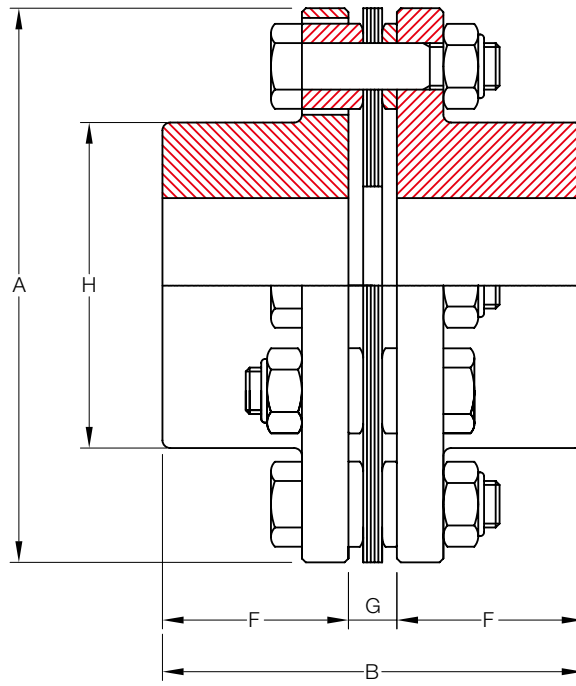


KE3 Type

Single Disc Flex with Eight Bolts



Angular Misalignment = 0.5°
8 Bolt Holes

Size	Torque Rating (Nm)	Allow Speed RPM	Max Bore (mm)	Shaft Line Displacement (mm)	Bolt Torque (Kg.m)	GD ² (Kg.m ²)	Dimensions (Millimeters)				
							A	B	F	G	H
01	3,842	15,000	95	2.1	7.3	0.65	214	228.2	108	12.2	137
03	7,115	13,000	115	2.1	15.9	1.24	246	255.7	121	13.7	165
05	8,967	11,600	125	2.1	22.1	1.80	276	285.5	134	17.5	180
10	10,780	11,600	125	2.1	22.1	1.80	276	287.0	134	19.0	180
15	15,386	10,300	140	2.4	45.0	3.70	308	339.0	160	19.0	200
20	25,578	9,200	158	2.9	58.0	6.80	346	388.5	183	22.5	228
25	37,730	8,500	165	3.1	110.0	10.80	375	424.0	198	28.0	240
30	47,138	7,800	178	3.3	150.0	16.70	410	459.0	214	31.0	258
35	57,036	7,200	187	3.6	170.0	25.0	445	481.0	225	31.0	272
40	64,386	6,800	205	4.0	170.0	31.10	470	528.0	247	34.0	297
45	83,594	6,200	231	4.5	170.0	48.00	511	591.5	278	35.5	334
50	103,194	5,700	254	5.0	310.0	74.40	556	647.0	305	37.0	364
55	128,086	5,400	263	5.2	360.0	101.60	587	671.5	317	37.5	382

* Coupling Weight is without Bore Machining