

JC – CS Type

Jaw Couplings

Clamping Screw & Set Screw Hybrid Type

The JC-CS Type is designed for easy installation, featuring a clamping screw on one side and a set screw on the other. The hubs are made from high-strength aluminum (AL7075-T6), while the spacer is crafted from high-elasticity polyurethane (SH98A). The anodized surface ensures excellent corrosion resistance.



Ordering Instructions

- Please specify the series, outer diameter, and bore size when placing your order.
- If keyway machining (on the bore) is required, ensure to indicate this separately.
- For assistance in selecting the right couplings, please contact our customer service center.

JC

series

32

Specifications
(Outer diameter)

CS

Type
(Fastening method)

10

Bore diameter
(d1)

15

Bore diameter
(d2)

LK3 – RK5

Keyway
(Side d1)

Keyway
(Side d2)

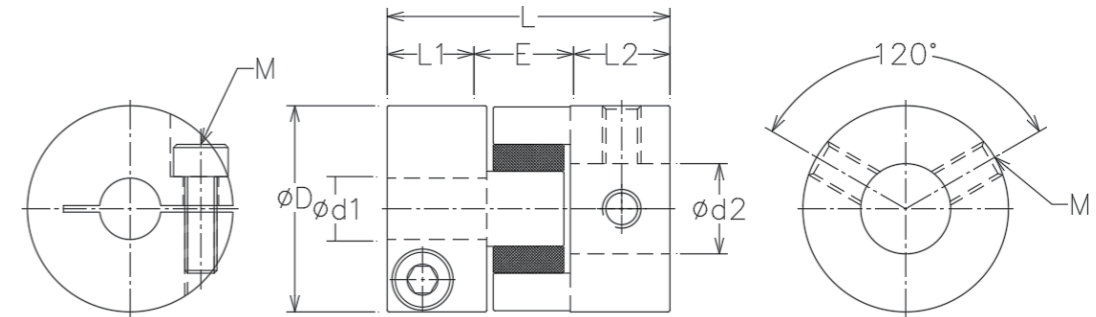
For keyway machining

Standard Bore Diameter

※ Bore machining is available within the product's minimum to maximum bore range beyond the standard bore sizes. (Refer to the figures on the right)

Standard bore diameter (d1/d2, mm)	3	4	5	6	6.35	8	10	12	14	15	16	18	19	20	22	24	25	26	28	30	32	35		
JC 16 CS	•	•	•	•	•	•																		
JC 20 CS		•	•	•	•	•	•																	
JC 25 CS			•	•	•	•	•	•																
JC 32 CS				•	•	•	•	•	•	•														
JC 42 CS						•	•	•	•	•	•	•	•	•	•									
JC 48 CS							•	•	•	•	•	•	•	•	•	•	•							
JC 54 CS								•	•	•	•	•	•	•	•	•	•	•	•	•	•	•	•	•
JC 65 CS									•	•	•	•	•	•	•	•	•	•	•	•	•	•	•	•

Download detailed product information, including 2D (dwg) and 3D (step) files, from our website: www.jitcoupling.co.kr.



Dimension

Product Name	External Diameter	Length	Bore diameter range (d1/d2)		Shaft depth		Shaft Insert Distance	Bolt Size
			Min. Bore Diameter	Max. Bore Diameter	Shaft Insert Length	Shaft Insert Length		
JC 16 CS	Ø16	23.6	3	8	8	8	7.6	M2.5/M3
JC 20 CS	Ø20	30	4	10	10	10	10	M3/M4
JC 25 CS	Ø25	35	5	13	12	12	11	M4/M5
JC 32 CS	Ø32	44	6	18	16	16	12	M5/M6
JC 42 CS	Ø42	55	8	22	21	21	13	M5/M6
JC 48 CS	Ø48	66	10	25	25	25	16	M6/M8
JC 54 CS	Ø54	78	12	30	30	30	18	M6/M8
JC 65 CS	Ø65	90	14	35	35	35	20	M8/M10

Specification

Product Name	Rated Torque (Nm)	Max Torque (Nm)	Max. Rotational Frequency (min ⁻¹)	Moment of Inertia (kg ² m ²)	Static Torsional Stiffness (Nm/rad)	Max. Lateral Misalignment (mm)	Max. Angular Misalignment (°)	Max. Axial Misalignment (mm)	Mass (g)
JC 16 CS	4	5.2	14,000	4.01x10 ⁻⁷	15	0.1	1	0.1	12.8
JC 20 CS	8.6	12	13,500	1.24x10 ⁻⁶	28	0.13	1	0.1	25.4
JC 25 CS	18.2	23.6	12,500	3.54x10 ⁻⁶	43	0.15	1	0.15	46.3
JC 32 CS	26.4	33	11,500	1.19x10 ⁻⁵	72	0.2	1	0.2	85.5
JC 42 CS	36.8	44.2	9,000	4.44x10 ⁻⁵	600	0.2	1	0.2	205.6
JC 48 CS	66	82	7,700	1.12x10 ⁻⁴	1000	0.2	1	0.2	280
JC 54 CS	120	154	6,900	1.65x10 ⁻⁴	1,400	0.2	1	0.2	320
JC 65 CS	300	348	5,750	4.1x10 ⁻⁴	2,900	0.2	1	0.5	565