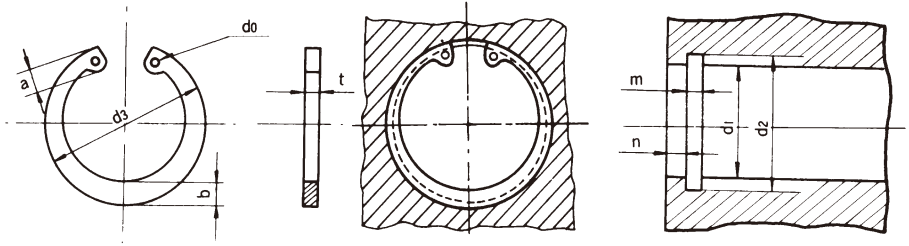


# Small Diameter C-Type Retaining Rings for Holes



Unit: mm

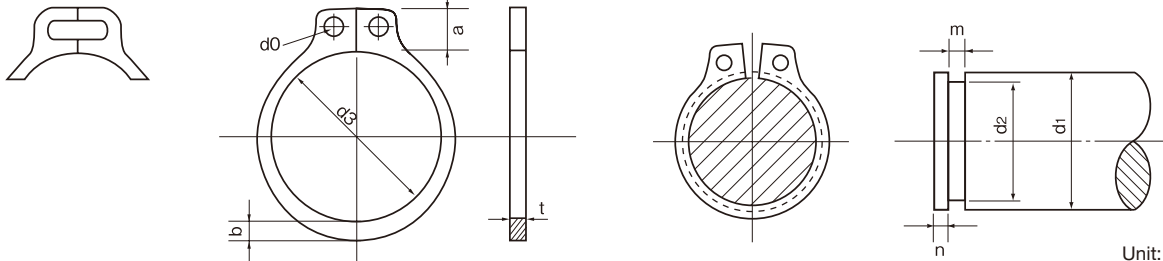
Dimensions Codes	Nominals d <sub>1</sub>	Dimensions of Retaining Rings							Thrust Loading Allowance (Ref.) kN	Groove Dimensions (Ref.)				
		d <sub>3</sub>		t		b	a	d <sub>0</sub>		d <sub>2</sub>		m		n
		Basic	Tolerance	Basic	Tolerance					Approx.	Approx.	Basic	Tolerance	
50025	6.4	6.9	±0.15	0.4	±0.04	0.65	1.6	0.8	1,255	6.7	±0.03	0.45	+0.10 0	1.0
50031	8.0	8.6		0.84		1.7	1,569		8.4	0.7				
50037	9.5	10.3		1.0		2.1	3,138		10.0	±0.05		0.7		

<b>Product code</b>	<b>150</b>	<b>Material code</b>	<b>02...SUS304-CSP</b>	<b>Part Number Structure (Standardized Product Code)</b>			
<b>Surface code</b>	<b>01...Burnished</b>	<b>Hardness</b>	<b>HRC 37 - 46</b>	Product: ①⑤①①①①①①①① Surface: ②①①①①①①①①① Material: ①⑤①①①①①①①① Dimensions code: ①①①①①①①①①①			

# Small Diameter C-Type Retaining Rings for Shafts

Nominals 3.2 - 8

Nominals 9.0



Unit: mm

Dimensions Codes	Nominals d <sub>1</sub>	Dimensions of Retaining Rings							Thrust Loading Allowance (Ref.) kN	Groove Dimensions (Ref.)				
		d <sub>3</sub>		t		b	a	d <sub>0</sub>		d <sub>2</sub>		m		n
		Basic	Tolerance	Basic	Tolerance					Approx.	Approx.	Basic	Tolerance	
51012	3.2	2.8	±0.1	0.25	±0.03	0.5	1.2	Oval	392	3.0	±0.04	0.3	+0.10 0	1.5
51015	4.0	3.6		0.7		1.4	471		3.8	0.45				
51018	4.8	4.2		1.1		1.4	785		4.5	0.7				
51019	5.0	4.5		0.7		1.4	863		4.7	0.7				
51023	6.0	5.5		0.8		2.0	1,098		5.7	±0.06		0.7		
51027	7.0	6.3		0.9		2.0	2,275		6.5					
51031	8.0	7.1		1.0		2.2	2,589		7.4					
51035	9.0	8.1		1.0		2.2	2,903		8.4	0.7				

<b>Product code</b>	<b>151</b>	<b>Material code</b>	<b>02...SUS304-CSP</b>	<b>Part Number Structure (Standardized Product Code)</b>			
<b>Surface code</b>	<b>01...Burnished</b>	<b>Hardness</b>	<b>HRC 37 - 46</b>	Product: ①⑤①①①①①①①① Surface: ②①①①①①①①①① Material: ①⑤①①①①①①①① Dimensions code: ①①①①①①①①①①			

Remarks: Thrust load is calculated with safe factor 4.