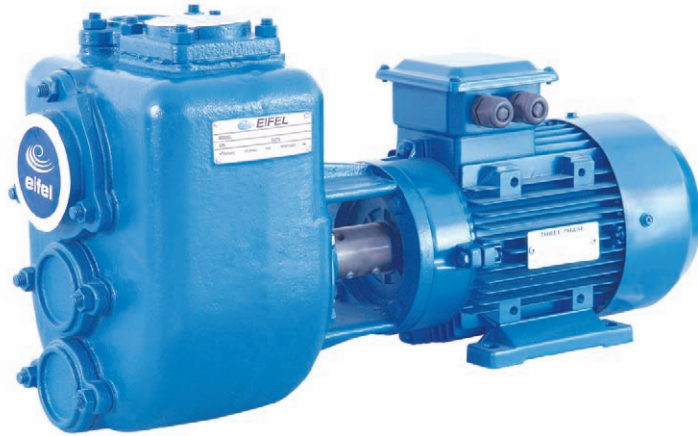


EJZ Series



Model Form

For example,

EJZ 80 - 140-0550 2 - CI - BR - SS - MS

Seal Type
MS = Mechanical Seal

Shaft Material
SS = Stainless Steel ASTM420
S304 = Stainless Steel ASTM304
S316 = Stainless Steel ASTM316
45 = Carbon Steel ASTM1045

Impeller and Wear Plate Material
DI = Ductile Iron Impeller and Cast Iron Wear Plate
BR = Bronze Impeller and Wear Plate
S304 = Stainless Steel ASTM304 Impeller and Wear Plate
S316 = Stainless Steel ASTM316 Impeller and Wear Plate

Casing Material
CI = Cast Iron
DI = Ductile Iron
BR = Bronze

Motor Pole Number (2, 4)

Motor Power 1/100KW

Impeller Nominal Size (mm)

Discharge Size (mm)

Close-coupled Self-priming Centrifugal Sewage Pump

Description

EJZ pump is derived from EJ pump, with its own feature in close-coupled structure according to the European Standard. Pumpshaft and motor shaft are close-coupled design. In this way, pump length and installation space are much reduced. Close-coupling ensures the alignment between pump and motor; meanwhile, pump impeller runs in good balance both dynamically and statically, therefore pump would be kept very well in operation. As self-priming sewage pump, EJZ is advanced in structure for its maintenance covers and wear plate. Maintenance covers enable convenient maintenance and cleaning; and wear plate would greatly prolong the whole service life.

EJZ pumps are also used for pumping mixtures containing abrasive solids up to a viscosity of 50mm²/s. They are applied in many fields, such as industry, civil engineering, marine, waste treatment and so on. Different neutral, alkali liquids clean or dirty can be handled by EJZ: liquids mixed with sand, mud or other solids in suspension; low viscosity petroleum products; lime milk, caustic soda and waste water resulted from washing, cooling, circulation, purification or emergency.

Design: Performance referring to the European standard

Structure: Semi-open Impeller, Horizontal, Axial End-Suction, Single-Stage, Single-Suction, Close-coupled, Self-priming Centrifugal Pump

Flange: All EJZ pumps are equipped with flange.
Screw Flange for Size < 100 mm
Nonstandard Flange for Size ≥ 100 mm

Rotation: Clockwise viewing from the drive side

Material

Casing –Cast Iron standard, Ductile Iron, Bronze optional
Impeller –Ductile Iron standard, Bronze, ASTM304, ASTM316 optional
Shaft –ASTM 1045 standard, ASTM304, ASTM316, ATSM420 optional
Shaft Seal –Mechanical Seal (Sic-Sic/Viton)

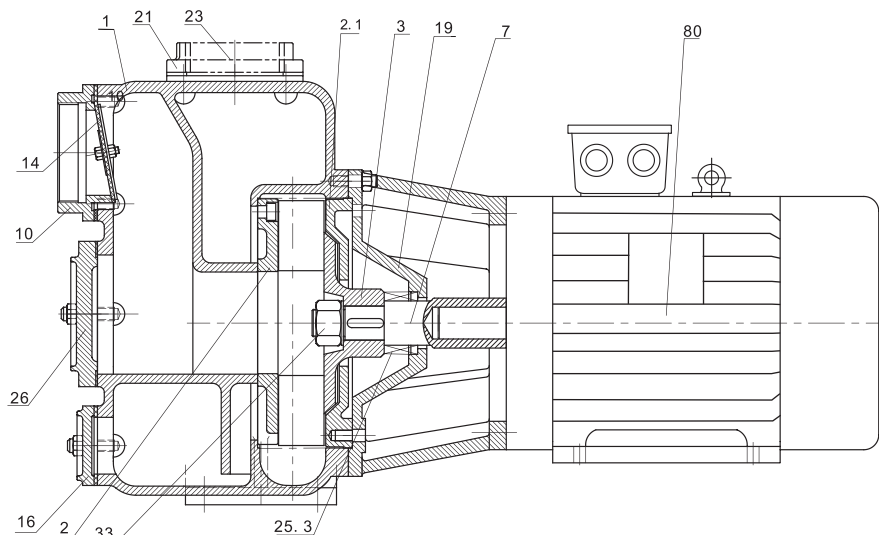
Operating Data

Flow Rate (Q): 4-160m³/h
Head (H): 4-25m
Speed: 1450 or 2900 rpm (50Hz)
Temperature: -10℃ to 80℃
Working Pressure: 6Bar
Max Solids: 50mm

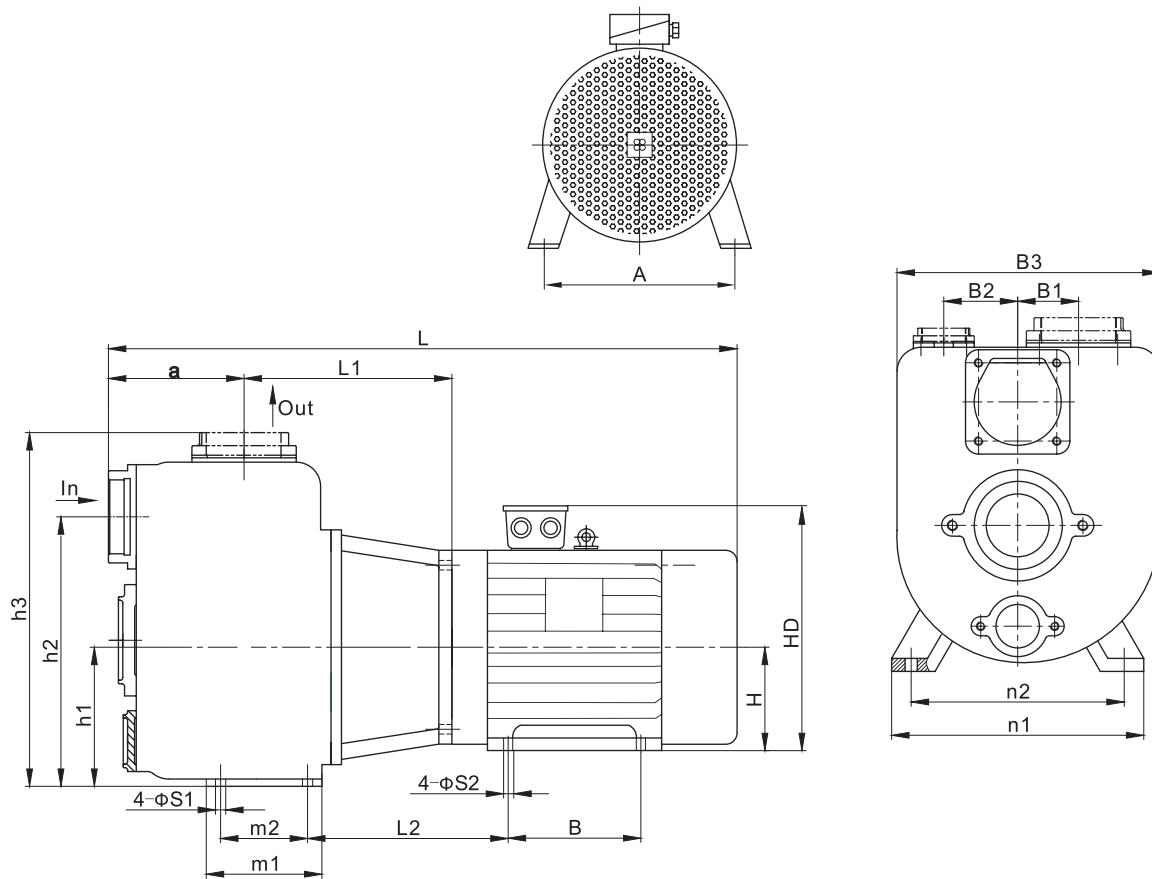
Structure Drawing

No. Spare Part

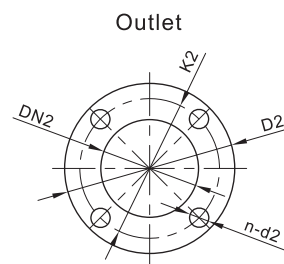
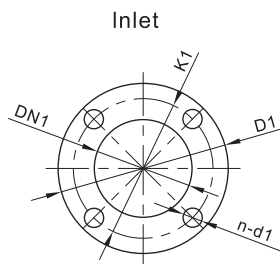
- 1 Casing
- 2 Front Wear Plate
- 2.1 Back Wear Plate
- 3 Impeller
- 7 Shaft
- 10 Suction Flange
- 14 Check Valve
- 16 Maintenance Cover
- 19 Casing Cover
- 21 Discharge Flange
- 23 Maintenance Cover
- 25.3 Mechanical Seal
- 26 Maintenance Cover
- 33 Impeller Nut
- 80 MS Motor



EJZ Outline Drawing & Installing Dimensions



Model	B1	B2	B3	h1	h2	h3	H	HD	m1	m2	n1	n2	A	B	a	L1	L2	L	s1	s2
EJZ40-110-01102	30	74.5	165	95	167.5	242	80	210	—	—	—	—	125	100	75	153.5	—	473.5	10	10
EJZ50-120-02202	36	94	210	105	201	321	90	235	—	—	—	—	140	125	114	185	—	609	12	10
EJZ80-140-04002	43	110	240	135	290	383	112	285	115	80	243	200	190	140	148	202.5	201	690.5	14	12
EJZ80-215-04004	70	164	302	160	310	410	112	285	133	100	290	245	190	140	156	239	226	735	14	12
EJZ100-250-07504	160	179	420	200	355	485	132	325	145	95	340	295	216	178	275	226.5	322	936.5	14	12



Model	Suction/Inlet Flange(mm)				Discharge/Outlet Flange(mm)			
	DN1	K1	D1	N-d1	DN2	K2	D2	n-d2
EJZ40-110-01102	RP1 1/2	—	—	—	RP1 1/2	—	—	—
EJZ50-120-02202	RP2	—	—	—	RP2	—	—	—
EJZ80-140-05502	RP3	—	—	—	RP3	—	—	—
EJZ80-215-04004	RP3	—	—	—	RP3	—	—	—
EJZ100-250-07504	Rp4	—	—	—	Rp4	—	—	—