

**bourdon tube pressure gauges
all stainless steel construction,
with microswitch,
DS 4" (100mm)**



CE Compliance to requirements of
LVD 2014/35/EU - PED 2014/68/EU

EAC

These instruments are designed for applications in the chemical, petrochemical industries, conventional power stations. They guarantee fully safe conditions while operating to adjust automatically the hydraulic and pneumatic systems as well as any other system working with fluids in general.

1.74.1 - Standard Model

Design: EN837-1.

Safety designation: S1 as per EN 837-2.

Ranges: from 0...15 to 0...10000 psi (from 0...1 to 0...600 bar or equivalent units).

Accuracy: class 2,5 as per EN 837-1.

Ambient temperature: -13...+149 °F (-25...+65 °C).

Process fluid temperature: -40...+302 °F (-40...+150 °C).

Working pressure: max 75% of the FSV.

Overpressure: not suitable.

Protection degree: IP 44 as per EN 60529/IEC 529.

Electrical specifications: N. 1 SPDT microswitch.

Contact setting: between 10% and 75% of FSV.

Differential: fixed, between 2% and 4% of FSV.

Socket material: AISI 316L st.st.

Elastic element: AISI 316L st.st.

Case: stainless steel.

Ring: stainless steel, bayonet lock.

Window: plastic.

Movement: stainless steel.

Dial: aluminium, white with black markings.

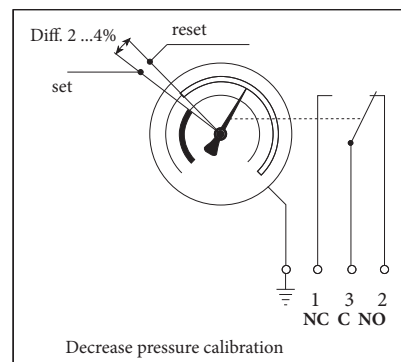
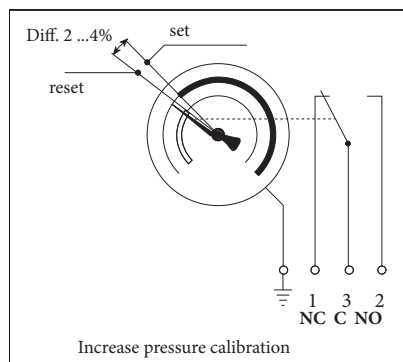
Pressure pointer: aluminium, black.

Set pointer: aluminium, red.

Adjusting key: plastic, removable.

Junction box: glass fibre reinforced poliammid with cable exit \varnothing 0.23...0.35" (6...9 mm) as per EN 175301-803 (Ex DIN 43650).

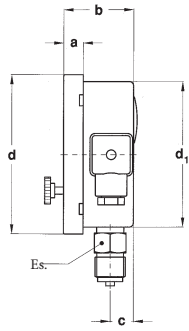
MICROSWITCH: SETTING



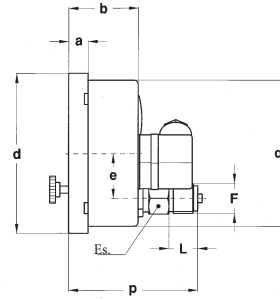
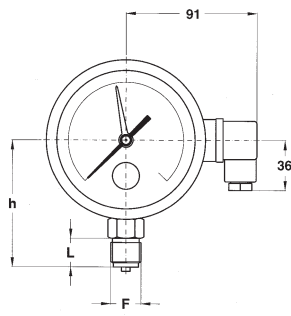
**bourdon tube pressure gauges, all stainless steel construction
with microswitch, DS 4" (100mm)**

MG574

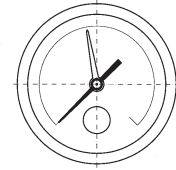
RC3 - 05/14



A - LOWER CONNECTION



D - BACK CONNECTION



| Mounting | F | a | b | c | d | d ₁ | e | h | p | L | Es. | Weight |
|----------|---------------|---------------|-----------------|---------------|------------------|----------------|---------------|-----------------|---------------|---------------|---------------|----------------------|
| Lower | 41M - G 1/2 A | 0.51" (13) | 1.90" (48,5) | 0.62" (16) | 4.35" (110,6) | 3.97" (101) | 1.22" (31) | 3.48" (88,5) | 3.65" (90) | 0.78" (20) | 0.86" (22) | 1.32 lbs (0,6 kg) |
| Back | | | | | | | | | | | | |

dimensions : inches (mm)

RATING LOAD

| Volt | DC | AC | Inductive load |
|------|-------|-----|----------------|
| 220 | 0,3 A | 4 A | 4 A |
| 110 | 0,4 A | 4 A | 4 A |
| 48 | 4 A | 4 A | 4 A |
| 24 | 4 A | 4 A | 4 A |

WIRING

| Wiring | Junction box | Cable |
|--------|--------------|--------------|
| NC | Contact N.°1 | Brown |
| NO | Contact N.°2 | Black |
| C | Contact N.°3 | Blue |
| Ground | Ground | Yellow-Green |

OPTIONS

| |
|---|
| RSV - Under-glass adjusting (IP 55 protection degree) |
| D30 - Differential between 6% and 10% of FSV (for ranges ≥ 60 psi - 2,5 bar) |
| S06 - Brass restrictor ø 0.015" (0,4 mm) for ranges ≤ 600 psi (40 bar) |
| T40 - Calibration for pressure decrease |

"HOW TO ORDER" SEQUENCE

Section / Model / Case / Mounting / Diameter / Range / Process connection / Options
1 74 1 A E 41M RSV...T40
D

