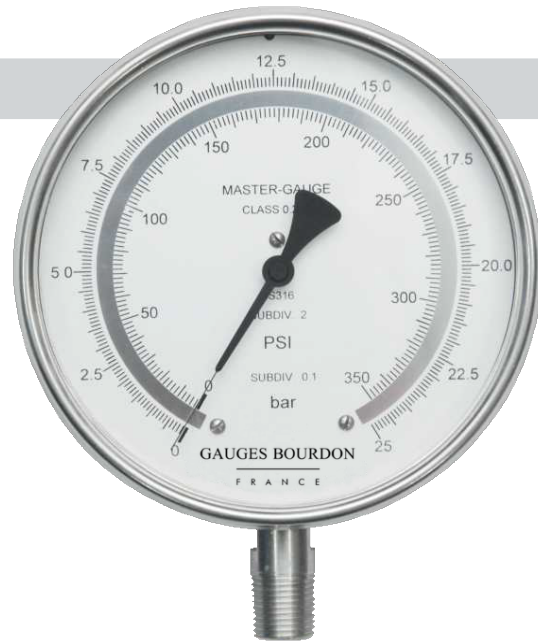


# Master Pressure Gauges

## MODEL : MAPG

### Features

- Accuracy class  $\pm 0.25\%$  FSD
- Rugged construction
- 1.2 fold over range capability for short duration
- Traceability to National / International Standard / Laboratory
- Special carrying case (Wooden Box) with each Gauge



### Specifications

<b>Ref. Standard</b>	EN 837
<b>Normal size</b>	150 mm / 250 mm
<b>Case &amp; Bezel</b>	SS304 / SS316, Weather proof to IP-68
<b>Dial</b>	Anti parallax mirror type, white, with black markings.
<b>Window</b>	Instrument glass
<b>Pointer</b>	Balanced knife edge
<b>Measuring element</b>	Bourdon in SS316 Ti
<b>Movement</b>	Precision brass, jewel bearings
<b>Connection</b>	1/2" NPT (M), bottom or back eccentric in SS316
<b>Range</b>	Refer table
<b>Scale</b>	bar(g), kg/cm <sup>2</sup> (g), psi(g)
<b>Accuracy</b>	$\pm 0.25\%$ FSD
<b>Over range</b>	1.2 times maximum rating for short duration
<b>Temperature suitability</b>	Ambient (-)20°C to 60°C, Media 60°C
<b>Temperature Effect</b>	Within $\pm 0.25\%$ FSD/10°C, when temperature changes from reference temperature of 20°C

#### Option

CE  
Atex

#### Pressure Comparator

Pressure Comparator consists of a hand operated Screw Pump, Reservoir for filling the System, Shut- off / Relieve Valves. Fluid Pressure is generated by operating the Screw Pump; and the pressure is made available at two test ports - one for Master Gauge and the other for the Gauge under Test. After testing the pressure is released using Relief Valve. It is easy to operate and provides maintenance free operation.

#### Pointer Puller Fixer kit

### Ranges

Range	least Count	
	bar, kg/cm <sup>2</sup>	150 mm 250 mm
(-)1 to 0	0.005	0.005
(-)760 to 0mmHg	5	5
(-)1 to 0.6	0.01	0.005
(-)1 to 1.5	0.02	0.01
(-)1 to 3	0.02	0.02
(-) 1 to 5	0.05	0.02
(-)1 to 9	0.05	0.05
(-)1 to 15	0.1	0.05
(-)1 to 24	0.2	0.1
(-)1 to 39	0.2	0.2
0 to 1	0.005	0.005
0 to 1.6	0.01	0.005
0 to 2.5	0.02	0.01
0 to 4	0.02	0.02
0 to 6	0.05	0.02
0 to 10	0.05	0.05
0 to 16	0.1	0.05
0 to 25	0.2	0.1
0 to 40	0.2	0.2
0 to 60	0.5	0.2
0 to 100	0.5	0.5
0 to 160	1.0	0.5
0 to 250	2.0	1.0
0 to 400	2.0	2.0
0 to 600	5.0	2.0

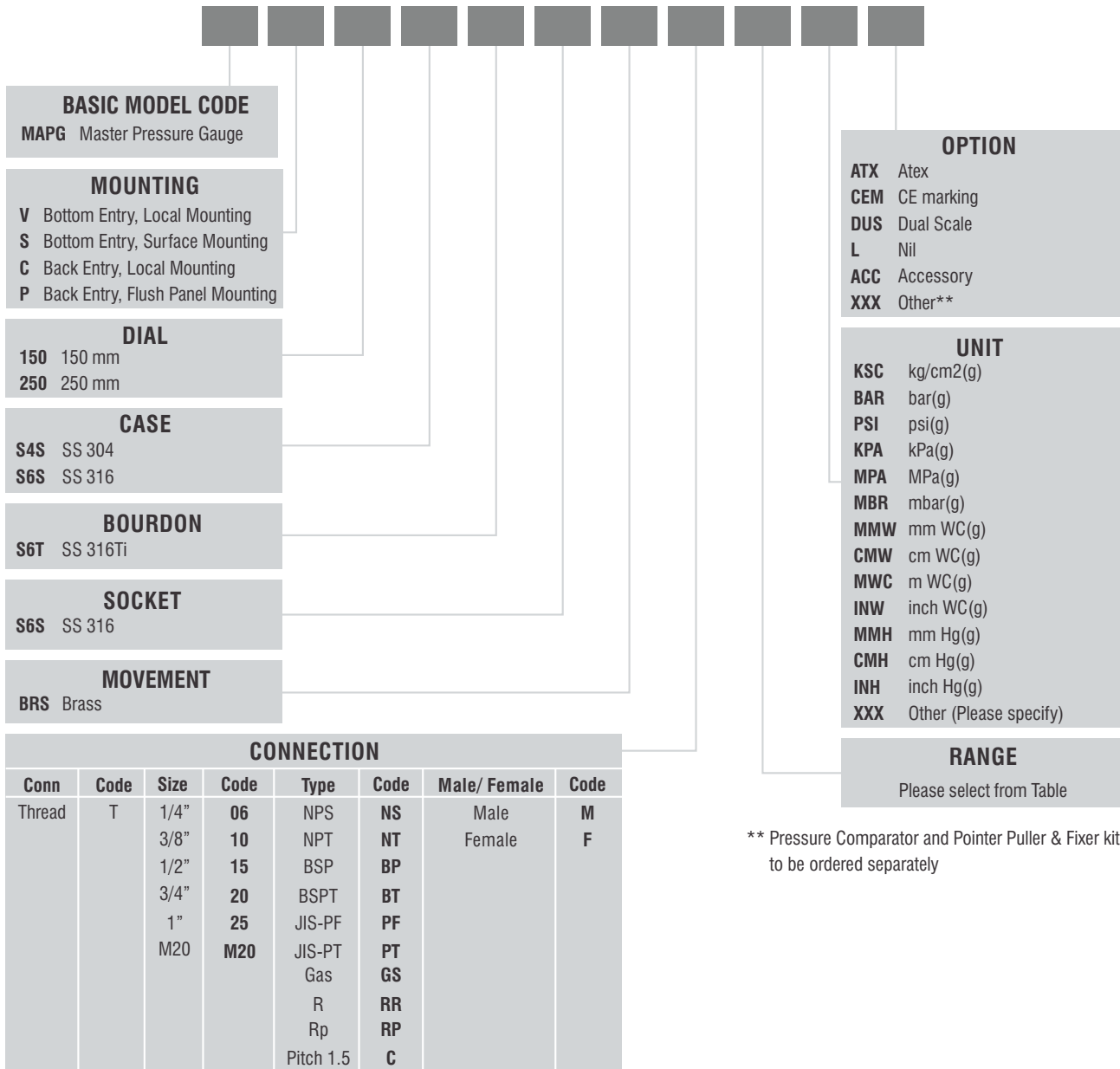
For range other than above please contact our design dept.

The parameters mentioned here are the standard specifications / values generally used for most of the Calibration Lab requirements. Any other specification not appearing here also can be provided as per customer requirement.

Under Technical Collaboration with M/s. Gauges Bourdon, France

# Ordering Information

## MODEL



e.g. For 1/2"NPT(M), Code: **T15NTM**  
For M20x1.5 (F), Code: **TM20CF**

\*\* Pressure Comparator and Pointer Puller & Fixer kit to be ordered separately

Sample Model Code: **MAPG-V-150-S4S-S6T-S6S-BRS-T15BPM-(0-25)-BAR-L**