

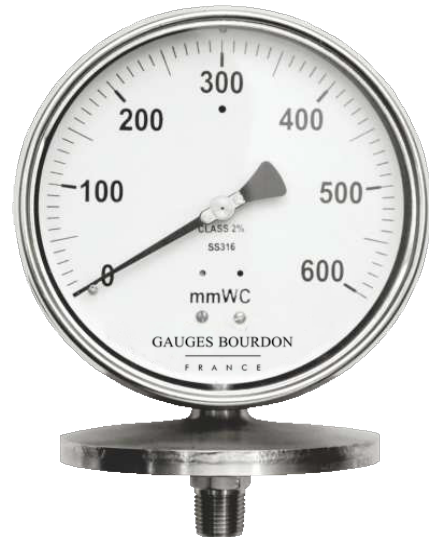
# Heavy Duty Capsule Sensing Pr. Gauges

**MODEL : HCPG (Normal Case)**

**SFHCPG (Solid Front Case)**

## Features

- Compliance to latest EN-837 standard
- Range : As show in the table
- All SS internals
- Special design with built in Gauges saver also available



## Specifications

<b>Ref. Standard</b>	EN-837
<b>Dial</b>	100 mm / 150 mm in Aluminium, white background, black markings
<b>Case</b>	SS304 / SS316 with bayonet bezel
<b>Protection</b>	IP-68 (IS:13947 part I / IEC:60529)
<b>Window</b>	Safety glass (Shatter proof / Toughened glass)
<b>Movement</b>	SS304 / SS316
<b>Capsule</b>	SS316 / SS316L
<b>Pressure Chamber</b>	SS316 / SS316L
<b>Connection</b>	½" NPT (M) as standard (other on request)
<b>Range</b>	Refer table
<b>Accuracy</b>	± 1.6% FSD
<b>Over range</b>	As per EN 837
<b>Zero adjustment</b>	Micrometer pointer
<b>Blow out disc</b>	Provided
<b>Temperature suitability</b>	Ambient (-) 20°C to 60°C, Media 100°C
<b>Temperature Effect</b>	Within ±0.6% FSD/10°C, when temperature changes from reference temperature of 20°C (as per EN-837 standard)
<b>Optional</b>	<ul style="list-style-type: none"> <li>• Solid Front Case</li> <li>• Special Construction to withstand high design pressure (Built in Gauge Saver)</li> <li>• Built in Snubber</li> <li>• External Knob for zero setting</li> <li>• NACE compliance</li> <li>• CE</li> <li>• Atex</li> </ul>

## Ranges

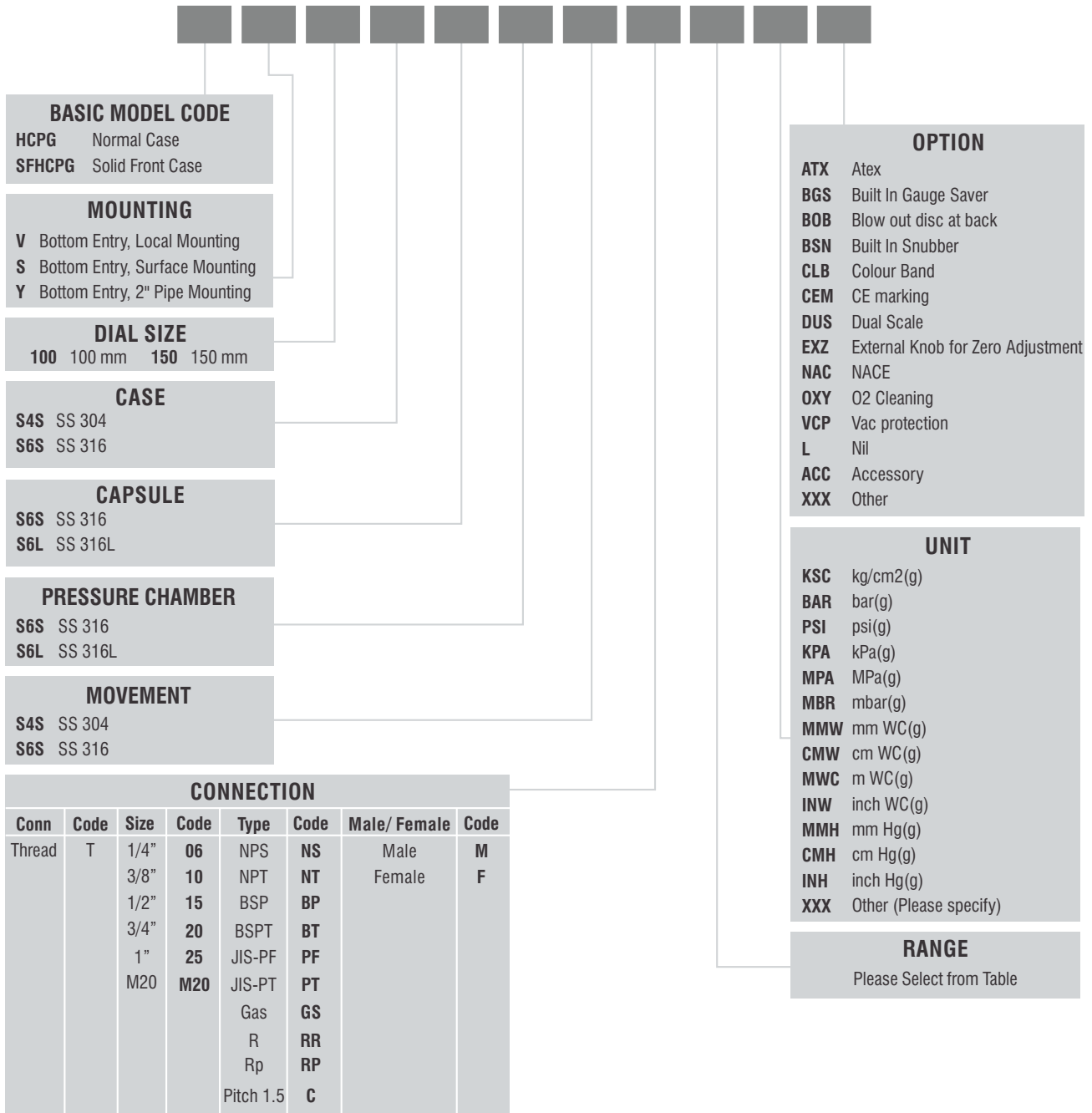
0-250 mm WC	(-)250 to 0 mm WC
0-400 mm WC	(-)400 to 0 mm WC
0-600 mm WC	(-)600 to 0 mm WC
0-1000 mm WC	(-)1000 to 0 mm WC
0-1600 mm WC	(-)1600 to 0 mm WC
0-2500 mm WC	(-)2500 to 0 mm WC
0-4000 mm WC	(-)4000 to 0 mm WC
0-6000 mm WC	(-)6000 to 0 mm WC

Special combination for compound ranges available, within the above span

The parameters mentioned here are the standard specifications / values generally used for most of the process applications. Any other specification not appearing here also can be provided as per customer requirement. For higher temperature services above 100°C, we recommend to provide suitable cooling arrangement (Syphon, Cooling Tower, Impulse Tubing etc.)

# Ordering Information

## MODEL



e.g. For 1/2"NPT(M), Code: **T15NTM**  
For M20x1.5 (F), Code: **TM20CF**

Sample Model Code: **HCPG-V-150-S4S-S6L-S6L-S4S-T15NTM-(0-400)-MBR-BGS**