

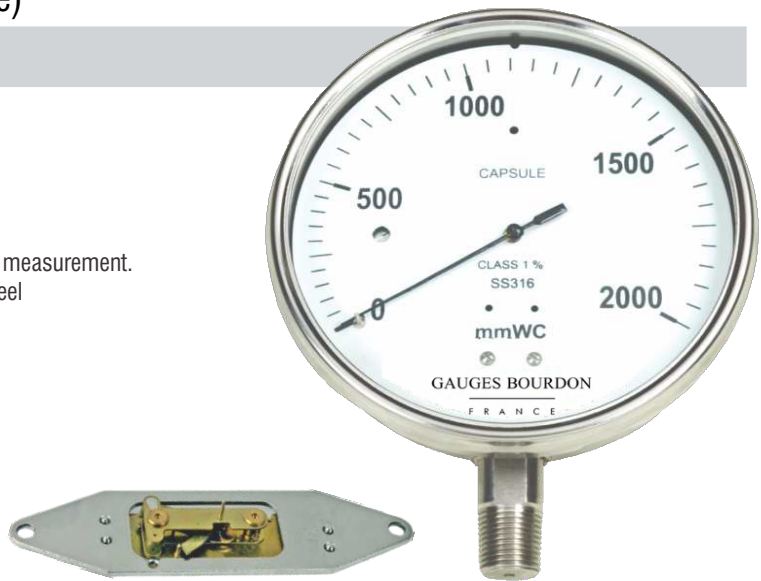
## Compact Capsule Sensing Pr. Gauges

**MODEL : CCPG** (Normal Case)

**SFCCPG** (Solid Front Case)

### Features

- Low range with high accuracy
- All SS internals
- Accuracy  $\pm 1\%$  FSD
- Compact design avoids use of bulky manometers
- Ingress protection class IP-68
- These Pressure Gauges are well suited for low pressure measurement.
- The sensing Element Capsule, is made of 2 Stainless Steel Laser-welded Diaphragms.



### Specifications

<b>Ref. standard</b>	EN 837
<b>Dial</b>	100 mm /150 mm, Aluminium, white background, black markings
<b>Case</b>	SS304 / SS316 with bayonet bezel
<b>Protection</b>	IP-68 (IS:13947 part I / IEC:60529)
<b>Window</b>	Safety glass (Shatter proof / Toughened glass)
<b>Pointer</b>	Light weight, balanced, aluminium
<b>Capsule</b>	SS316 / SS316L (made of two diaphragms laser-welded )
<b>Socket</b>	SS316 / SS316L
<b>Movement</b>	SS304 / SS316
<b>Connection</b>	1/2" NPT (M) as standard (other optional )
<b>Range</b>	Refer table
<b>Accuracy</b>	$\pm 1\%$ FSD
<b>Over range</b>	110% FSD Standard, Other on request
<b>Zero reset</b>	Provided
<b>Blow out disc</b>	Provided (on top)
<b>Temperature suitability</b>	Ambient (-) 20°C to 60°C, Media 100°C
<b>Temperature Effect</b>	Within $\pm 0.6\%$ FSD/10°C, when temperature changes from reference temperature of 20°C (as per EN-837 standard)
<b>Optional</b>	NACE Compliance CE Atex

### Ranges

#### Range in mm WC

0-50	(-)50-0
0-60	(-)60-0
0-100	(-)100-0
0-160	(-)160-0
0-250	(-)250-0
0-400	(-)400-0
0-500	(-)500-0
0-600	(-)600-0
0-750	(-)750-0
0-1000	(-)1000-0
0-1600	(-)1600-0
0-2000	(-)2000-0
0-2500	(-)2500-0
0-4000	(-)4000-0
0-6000	(-)6000-0

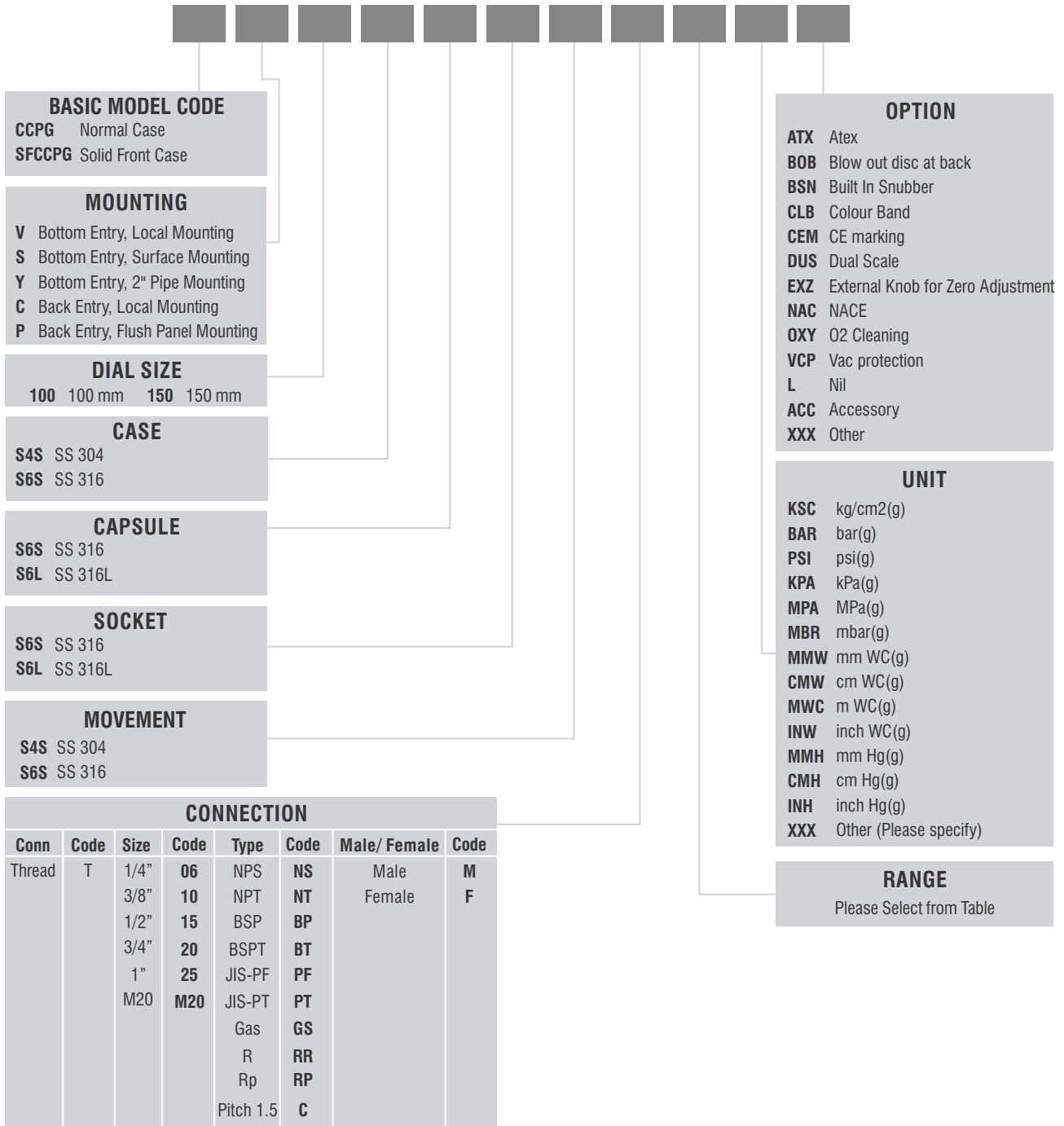
Special combination for compound ranges available, within the above span

The parameters mentioned here are the standard specifications / values generally used for most of the process applications. Any other specification not appearing here also can be provided as per customer requirement. For higher temperature services above 100°C, we recommend to provide suitable cooling arrangement (Syphon, Cooling Tower, Impulse Tubing etc.)

Under Technical Collaboration with M/s. Gauges Bourdon, France

# Ordering Information

## MODEL



e.g. For 1/2"NPT(M), Code: **T15NTM**  
 For M20x1.5 (F), Code: **TM20CF**

Sample Model Code: **CCPG-V-150-S4S-S6S-S6S-S4S-T15NTM-(0-1000)-MMW-L**